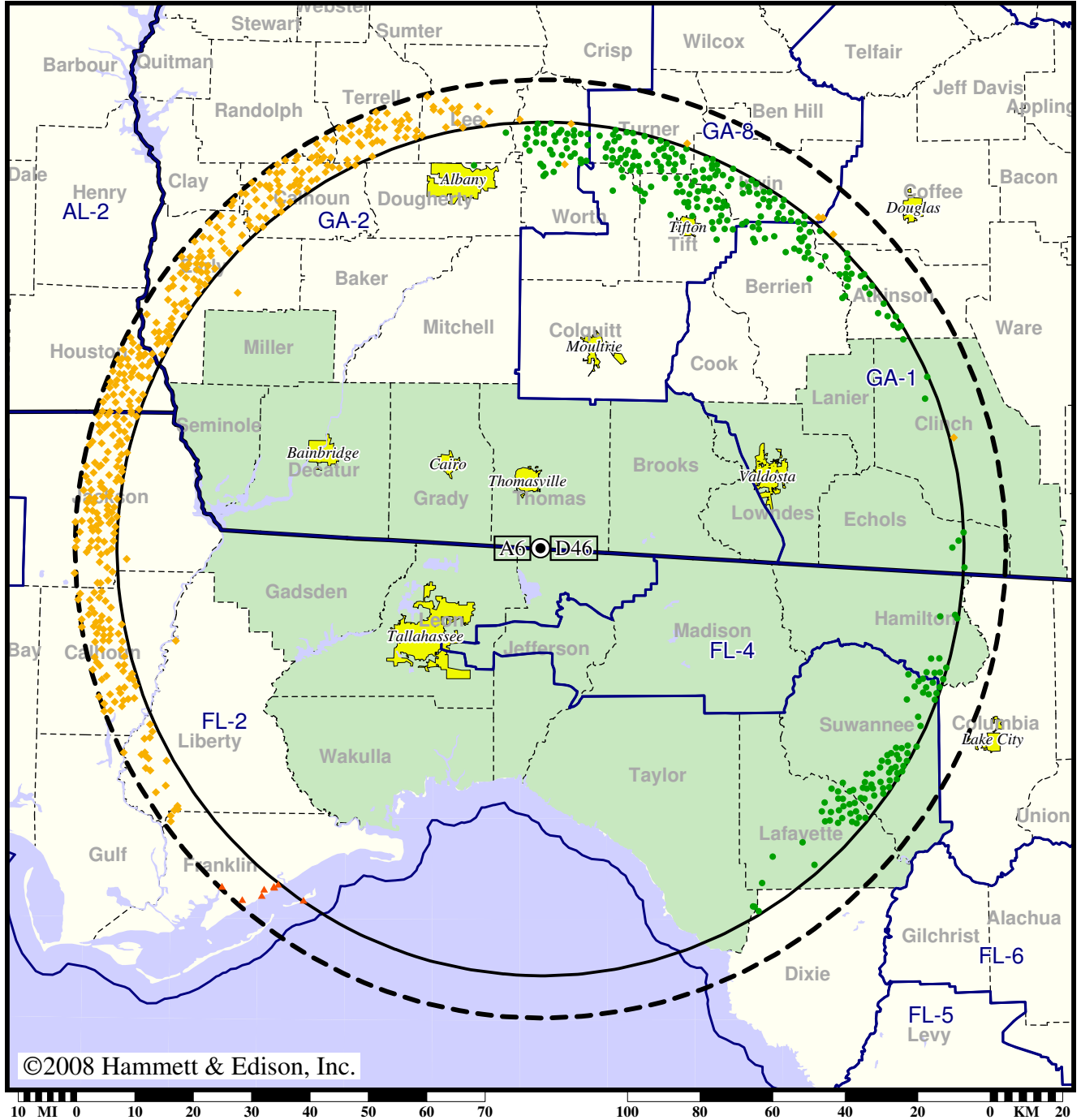


TV Station WCTV • Analog Channel 6, DTV Channel 46 • Thomasville, GA

Expected Change In Coverage: Licensed Operation

Licensed (solid): 1000 kW ERP at 566 m HAAT, Network: CBS  
vs. Analog (dashed): 97.7 kW ERP at 619 m HAAT, Network: CBS

Market: Tallahassee, FL-Thomasville, GA



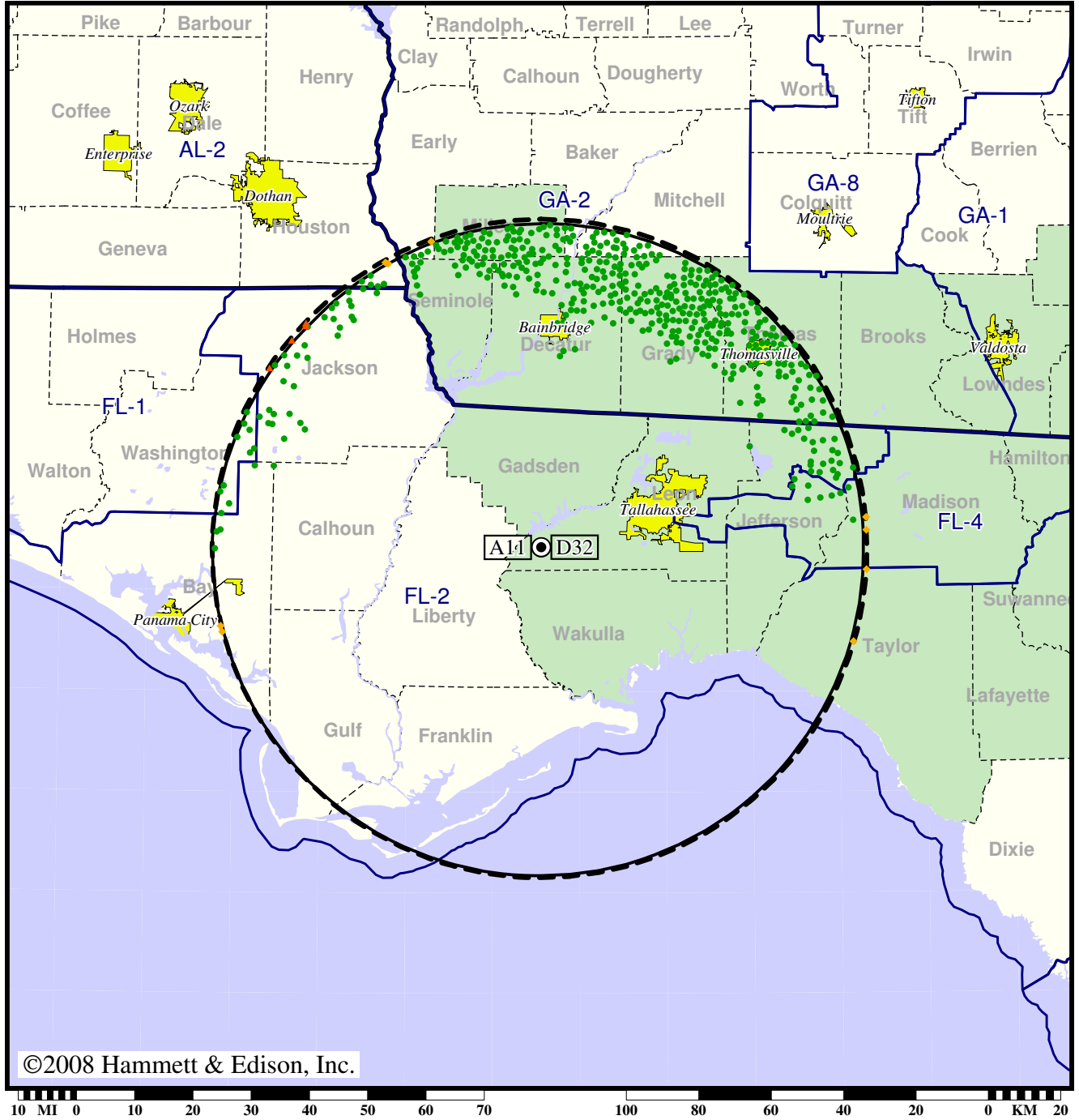
- Coverage gained after DTV transition
- (no symbol) No change in coverage
- ◆ Coverage lost but still served by same network
- ▲ Coverage lost and no other service by same network

Station WFSU-TV • Analog Channel 11, DTV Channel 32 • Tallahassee, FL

Expected Change In Coverage: Licensed Operation

Licensed (solid): 938 kW ERP at 237 m HAAT, Network: PBS  
 vs. Analog (dashed): 316 kW ERP at 232 m HAAT, Network: PBS

Market: Tallahassee, FL-Thomasville, GA



- Coverage gained after DTV transition
- (no symbol) No change in coverage
- ◆ Coverage lost but still served by same network
- ▲ Coverage lost and no other service by same network

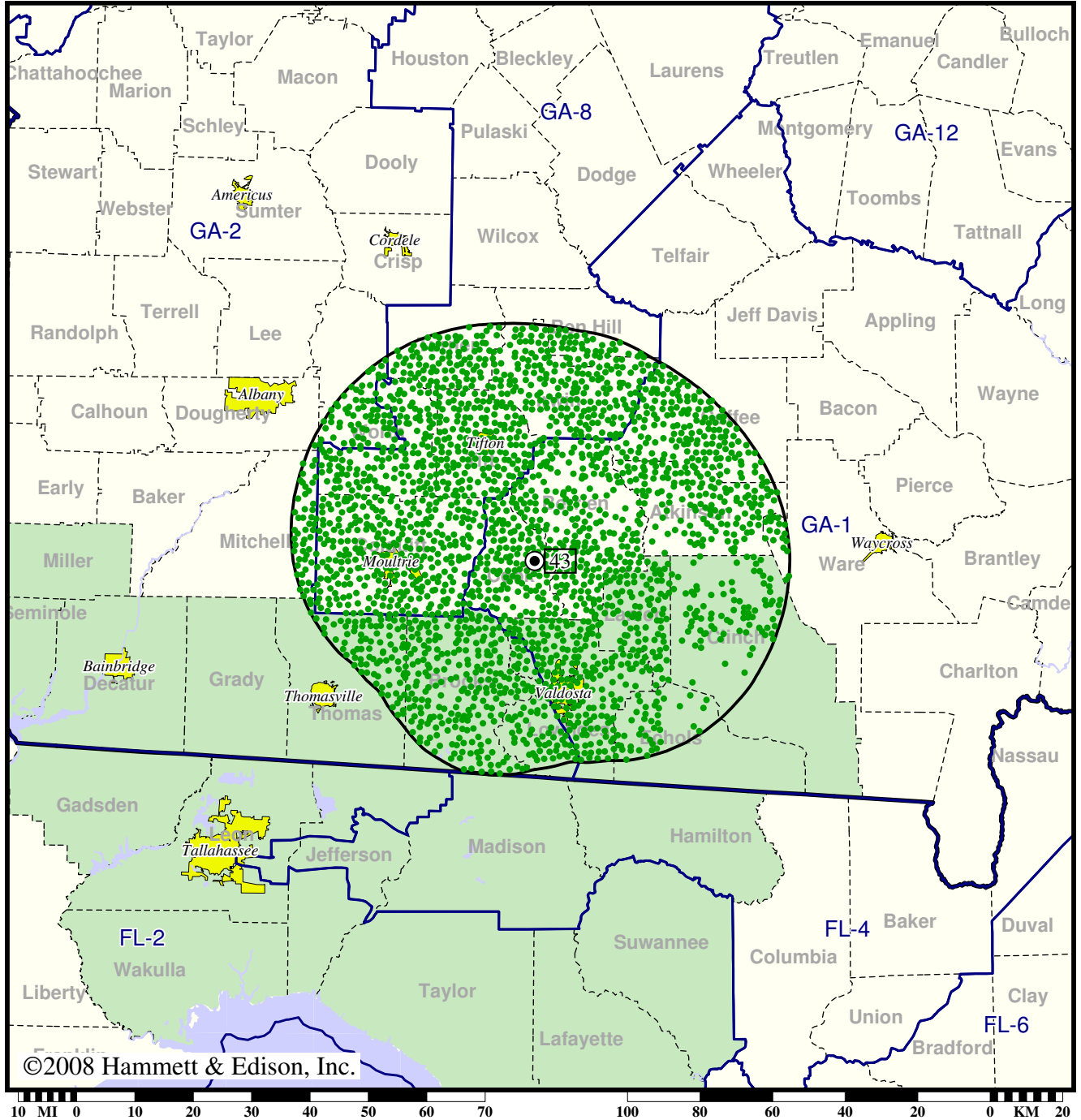


DTV Station WSWG • Channel 43 • Valdosta, GA

Expected Change In Coverage: Licensed Operation

Licensed (solid): 50.0 kW ERP at 253 m HAAT, Network: CBS

Market: Tallahassee, FL-Thomasville, GA



©2008 Hammett & Edison, Inc.

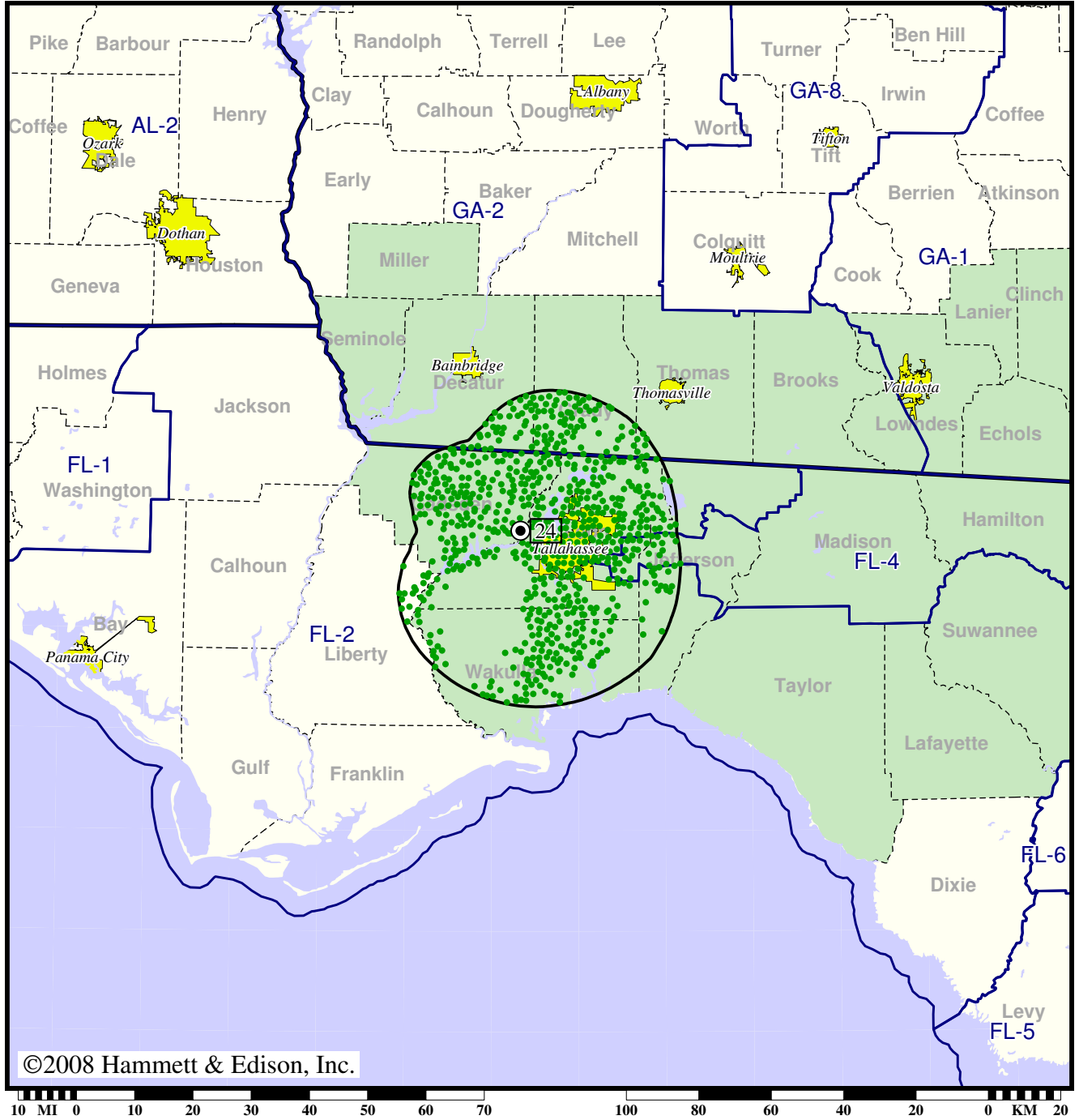
- Coverage gained after DTV transition
- (no symbol) No change in coverage

DTV Station WTLF • Channel 24 • Tallahassee, FL

Expected Change In Coverage: Licensed Operation

Licensed (solid): 24.0 kW ERP at 39 m HAAT

Market: Tallahassee, FL-Thomasville, GA



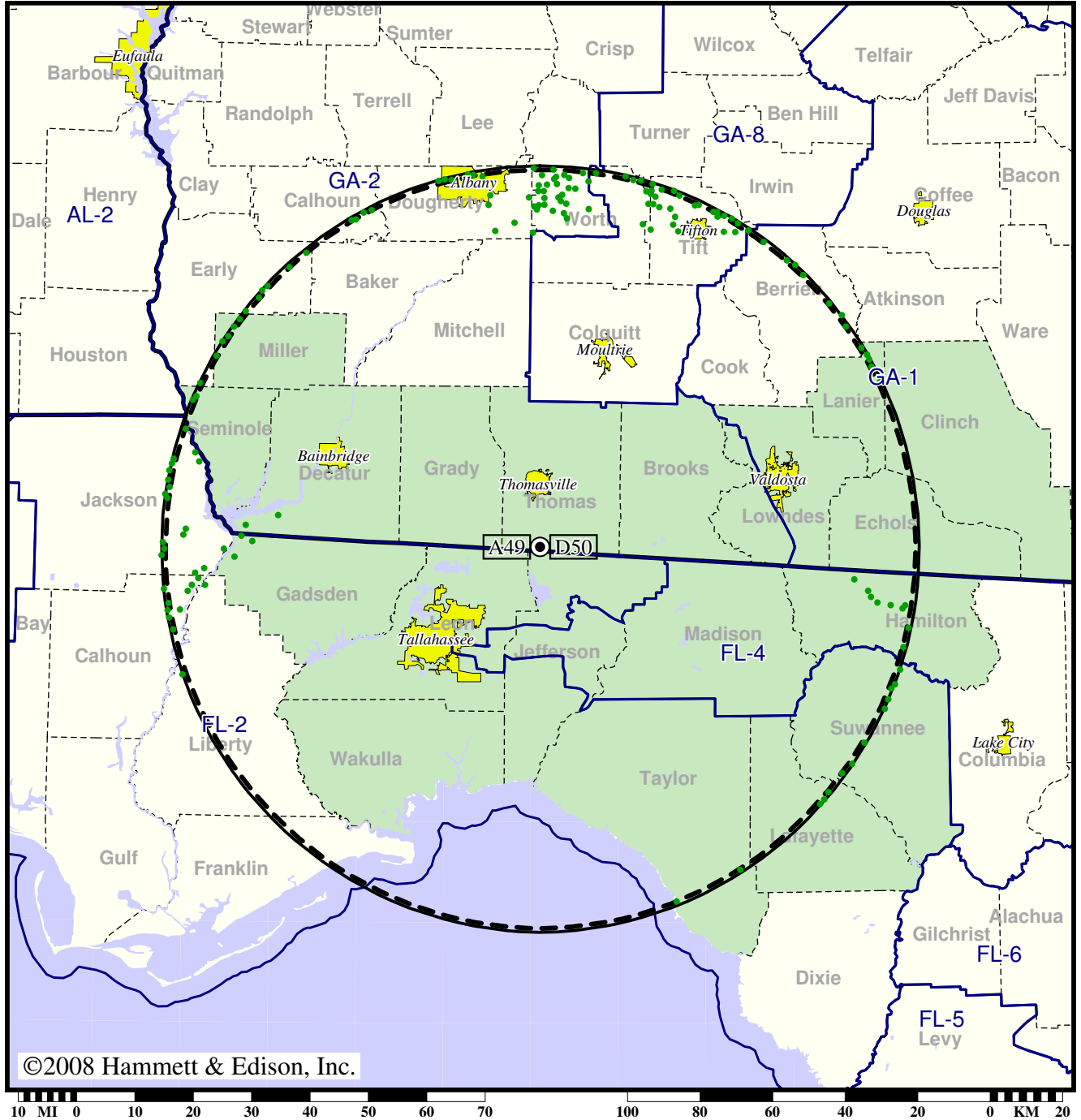
- Coverage gained after DTV transition
- (no symbol) No change in coverage

TV Station WTLH • Analog Channel 49, DTV Channel 50 • Bainbridge, GA

Expected Change In Coverage: Granted Rulemaking Petition

Granted Rulemaking (solid): 230 kW ERP at 597 m HAAT, Network: Fox  
vs. Analog (dashed): 5000 kW ERP at 597 m HAAT, Network: Fox

Market: Tallahassee, FL-Thomasville, GA



- Coverage gained after DTV transition
- (no symbol) No change in coverage

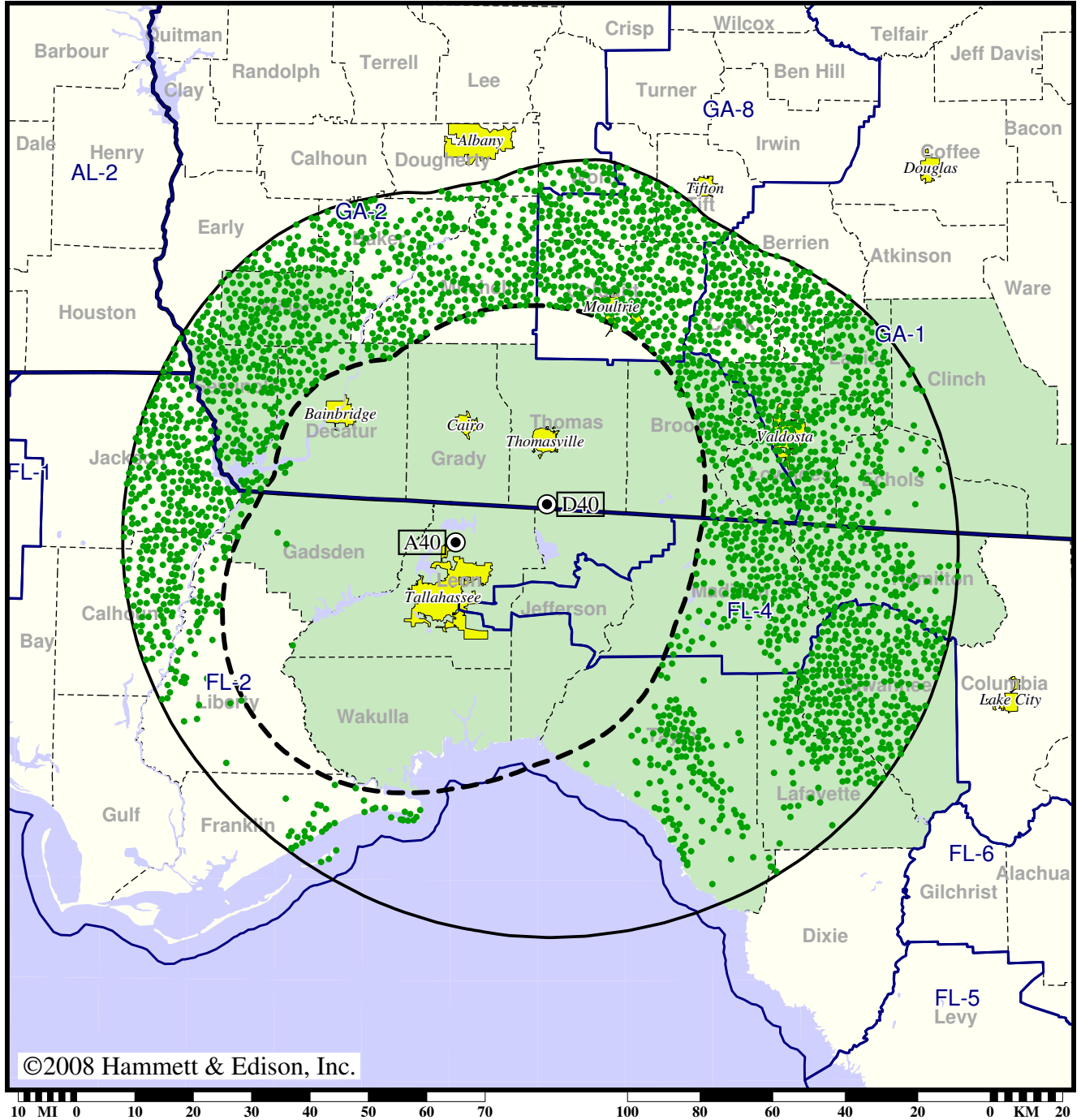


Station WTWC-TV • Analog Channel 40, DTV Channel 40 • Tallahassee, FL

Expected Change In Coverage: Granted Construction Permit

CP (solid): 1000 kW ERP at 600 m HAAT, Network: NBC  
vs. Analog (dashed): 3160 kW ERP at 269 m HAAT, Network: NBC

Market: Tallahassee, FL-Thomasville, GA



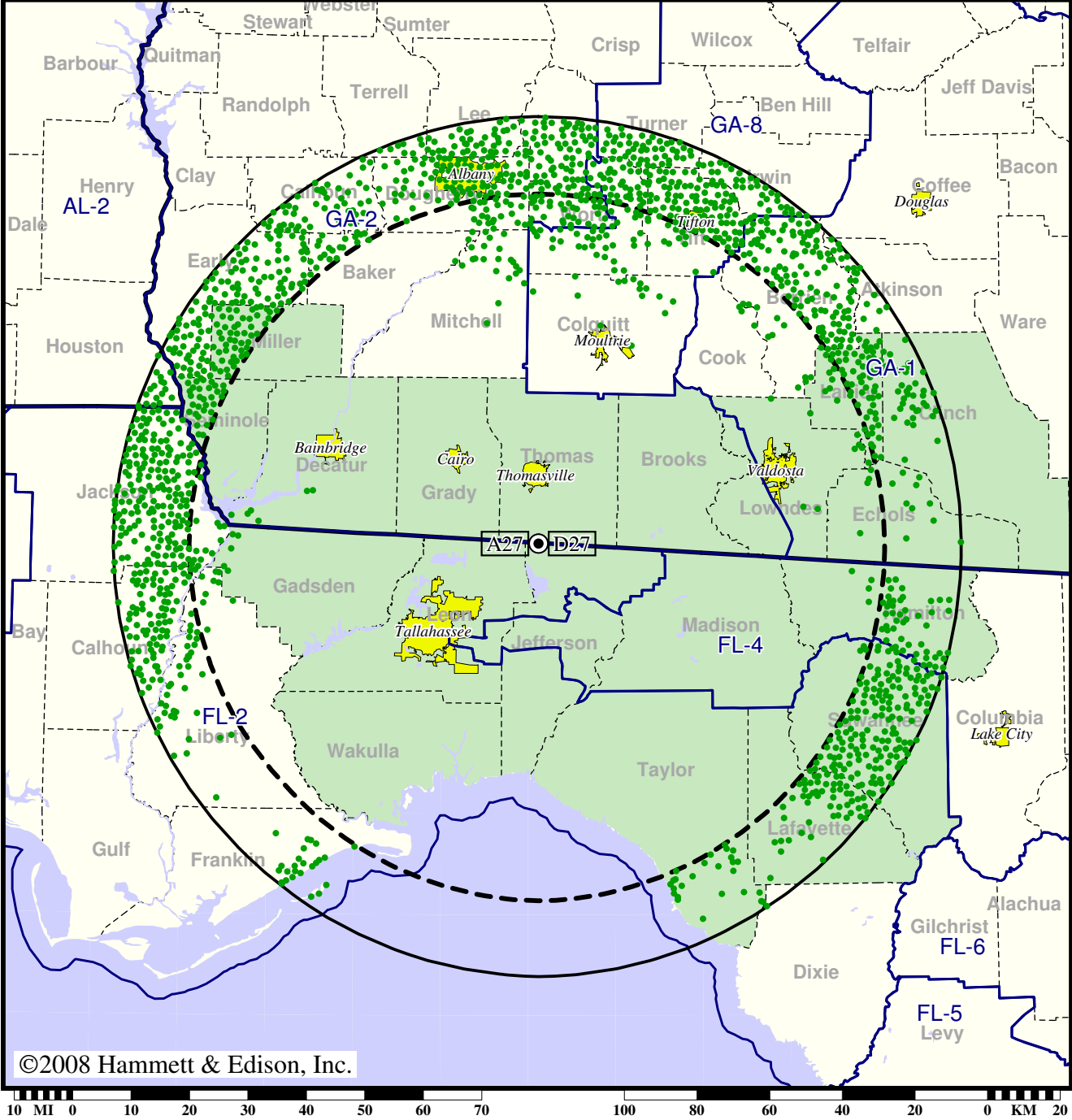
- Coverage gained after DTV transition
- (no symbol) No change in coverage

Station WTXL-TV • Analog Channel 27, DTV Channel 27 • Tallahassee, FL

Expected Change In Coverage: Granted Construction Permit

CP (solid): 1000 kW ERP at 518 m HAAT, Network: ABC  
vs. Analog (dashed): 2690 kW ERP at 518 m HAAT, Network: ABC

Market: Tallahassee, FL-Thomasville, GA



- Coverage gained after DTV transition
- (no symbol) No change in coverage