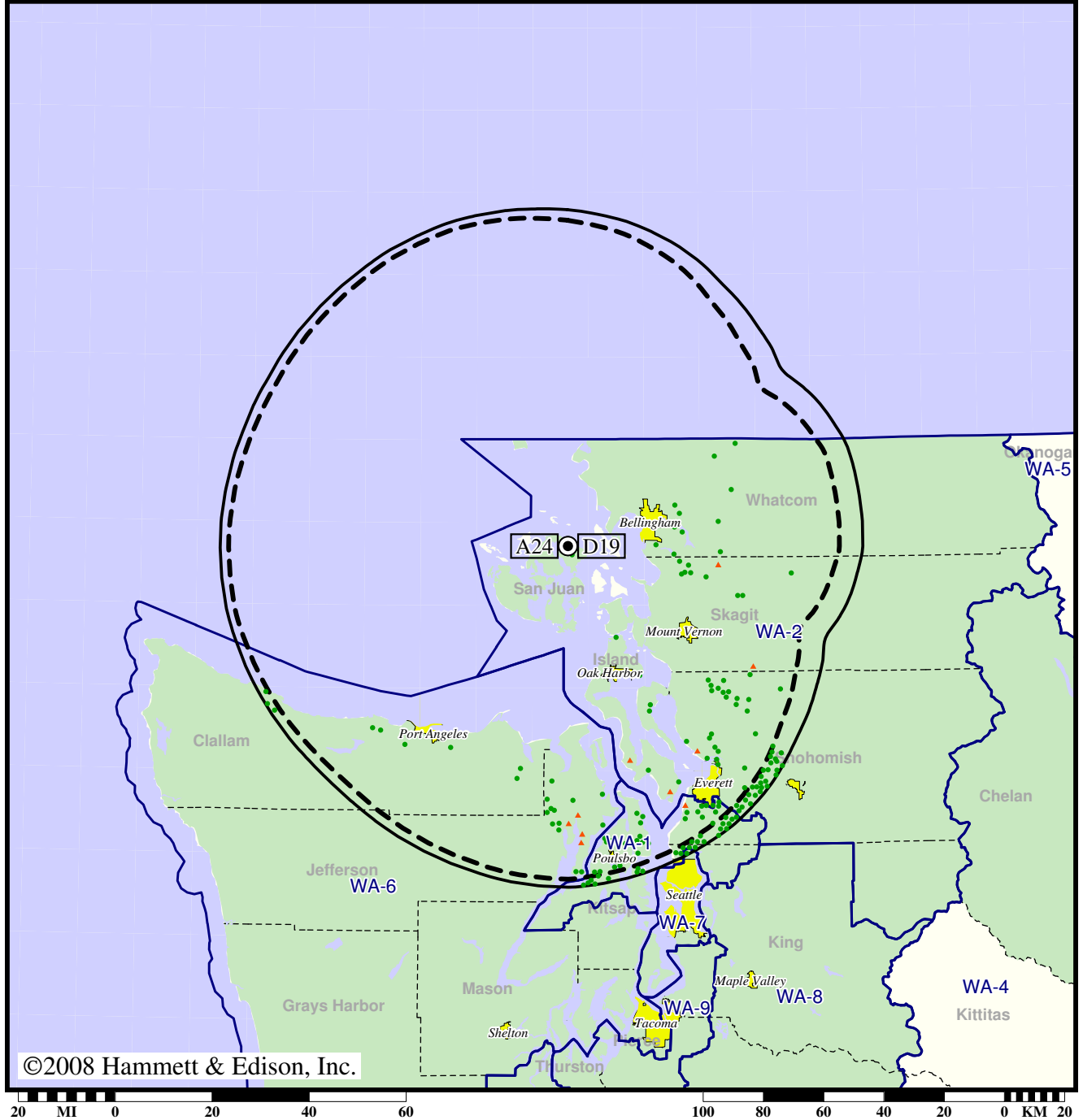


TV Station KBCB • Analog Channel 24, DTV Channel 19 • Bellingham, WA

Expected Change In Coverage: Licensed Operation

Licensed (solid): 165 kW ERP at 757 m HAAT
vs. Analog (dashed): 3090 kW ERP at 757 m HAAT

Market: Seattle-Tacoma, WA



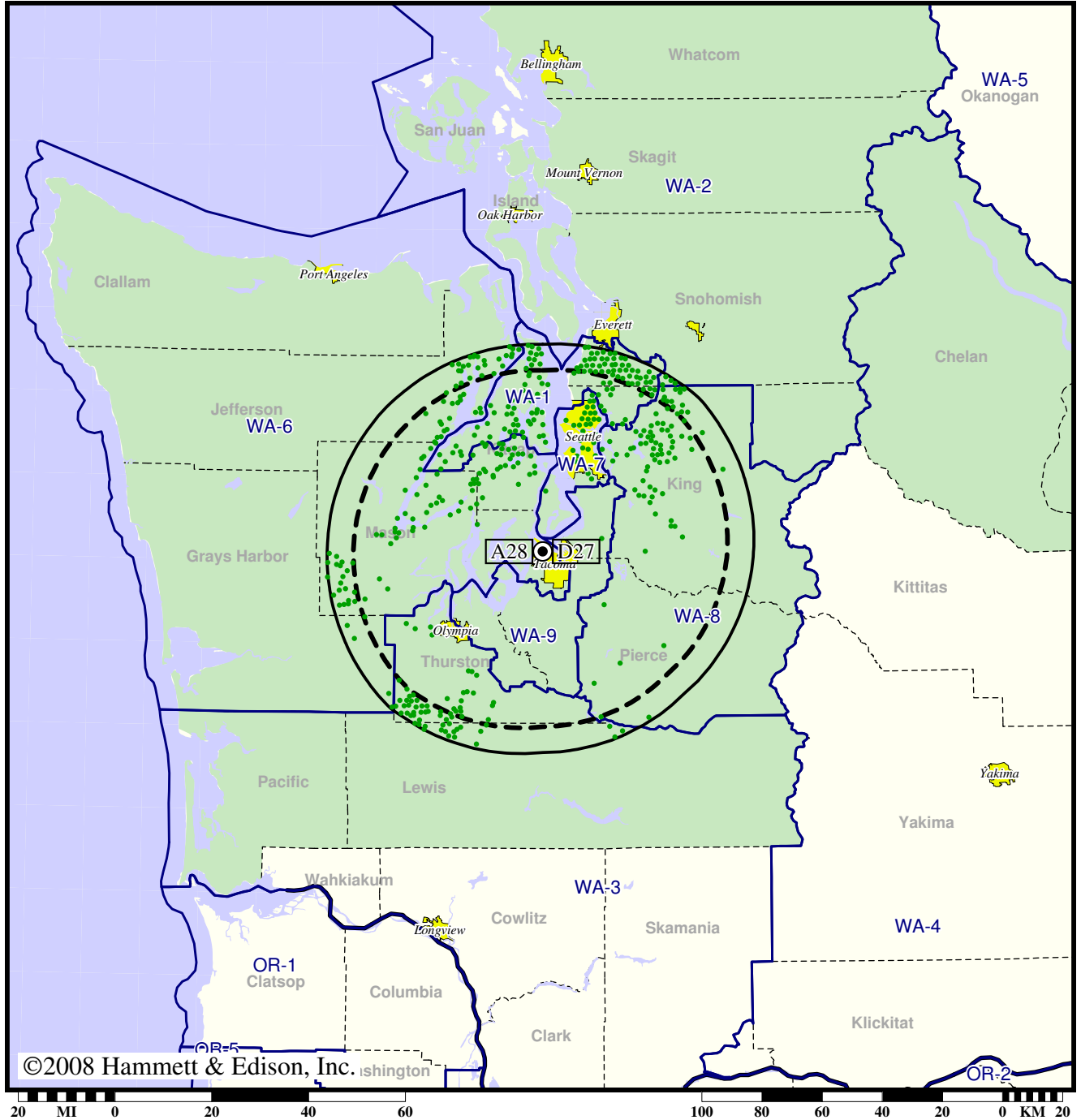
- Coverage gained after DTV transition
- (no symbol) No change in coverage
- ▲ Coverage lost after DTV transition

Station KBTC-TV • Analog Channel 28, DTV Channel 27 • Tacoma, WA

Expected Change In Coverage: Licensed Operation

Licensed (solid): 45.0 kW ERP at 235 m HAAT, Network: PBS
vs. Analog (dashed): 604 kW ERP at 219 m HAAT, Network: PBS

Market: Seattle-Tacoma, WA



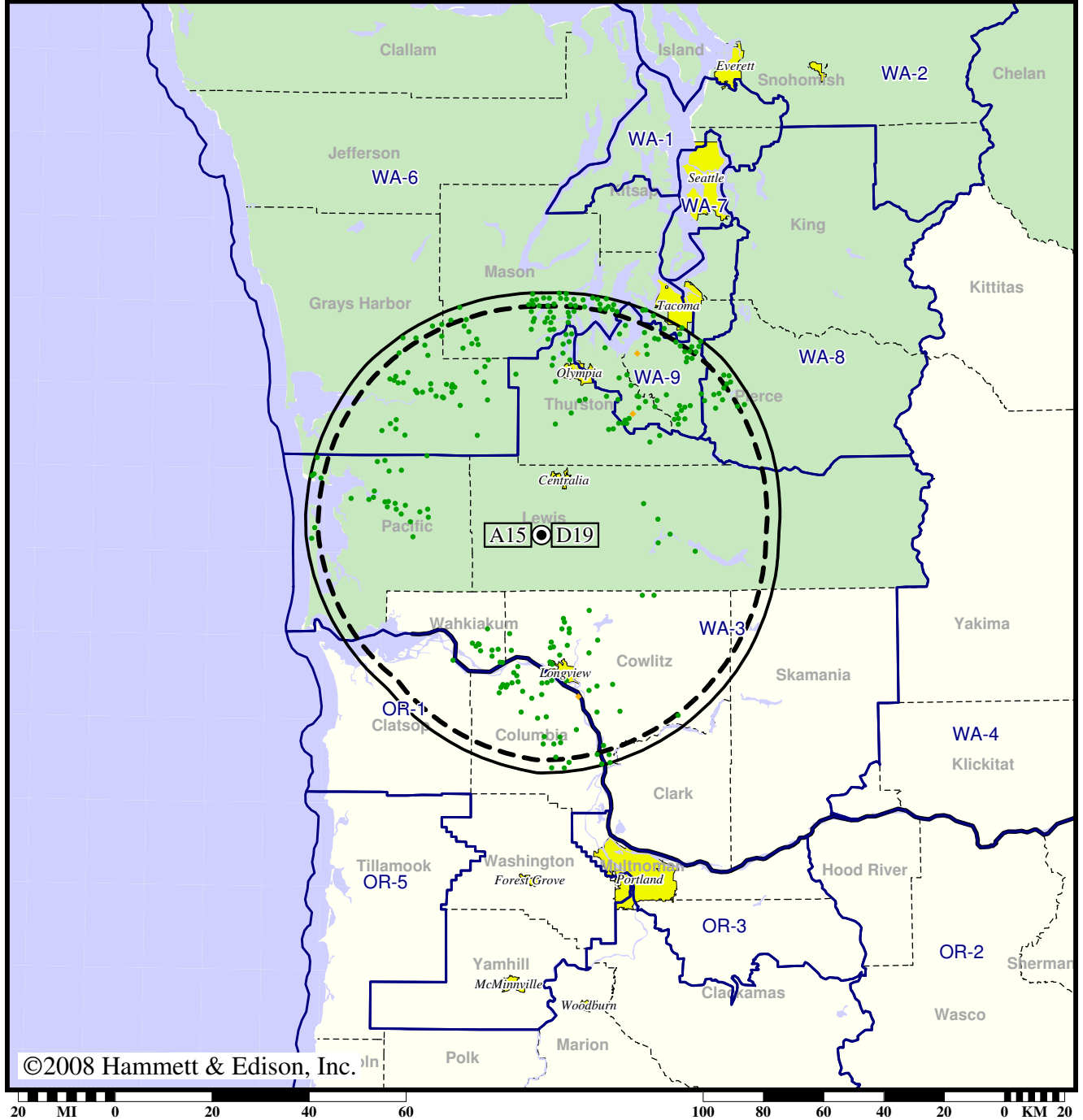
- Coverage gained after DTV transition
- (no symbol) No change in coverage

TV Station KCKA • Analog Channel 15, DTV Channel 19 • Centralia, WA

Expected Change In Coverage: Licensed Operation

Licensed (solid): 43.7 kW ERP at 334 m HAAT, Network: PBS
vs. Analog (dashed): 661 kW ERP at 347 m HAAT, Network: PBS

Market: Seattle-Tacoma, WA



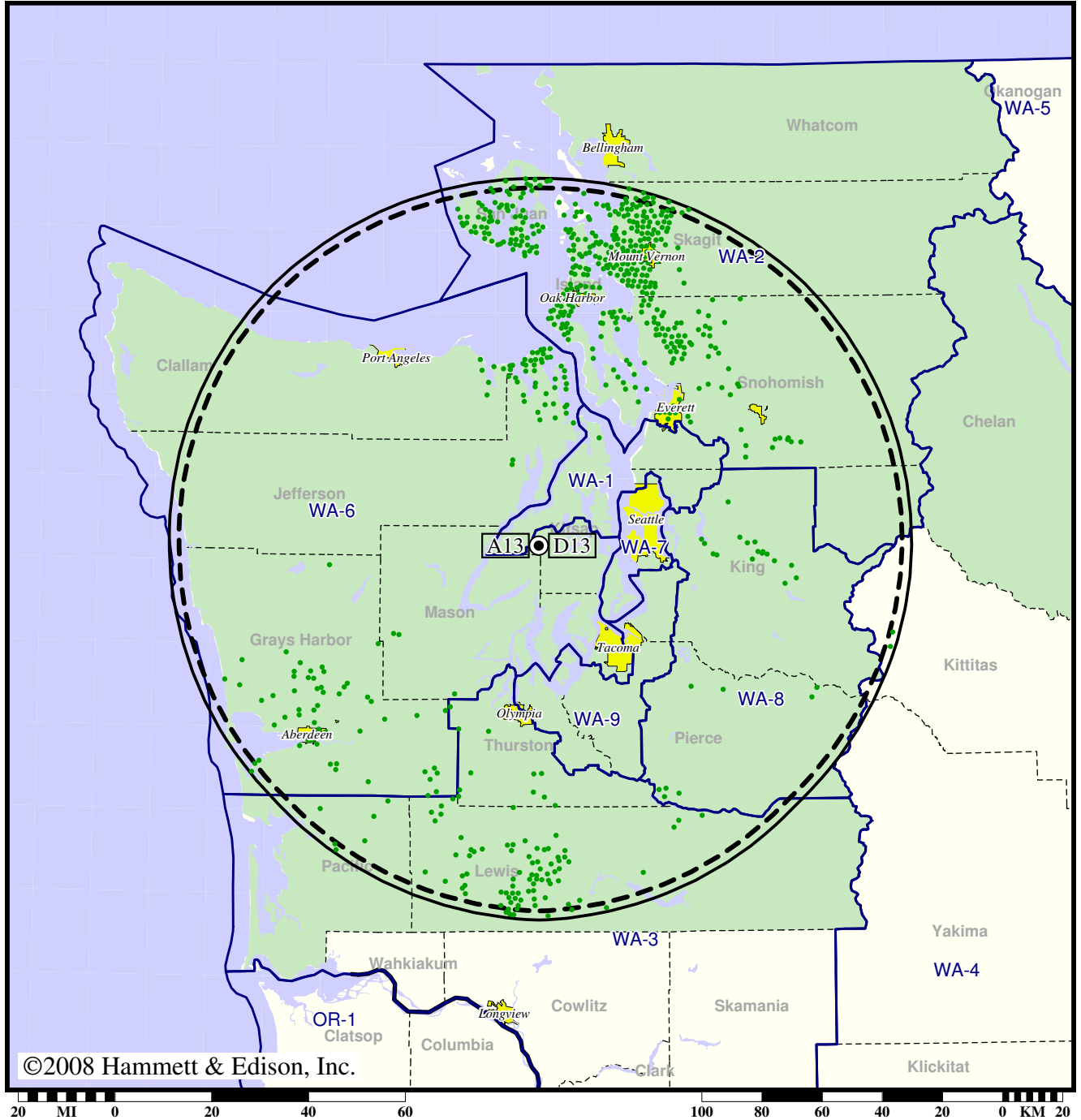
- Coverage gained after DTV transition
- (no symbol) No change in coverage
- ◆ Coverage lost but still served by same network

TV Station KCPQ • Analog Channel 13, DTV Channel 13 • Tacoma, WA

Expected Change In Coverage: Granted Construction Permit

CP (solid): 30.0 kW ERP at 610 m HAAT, Network: Fox
vs. Analog (dashed): 316 kW ERP at 610 m HAAT, Network: Fox

Market: Seattle-Tacoma, WA



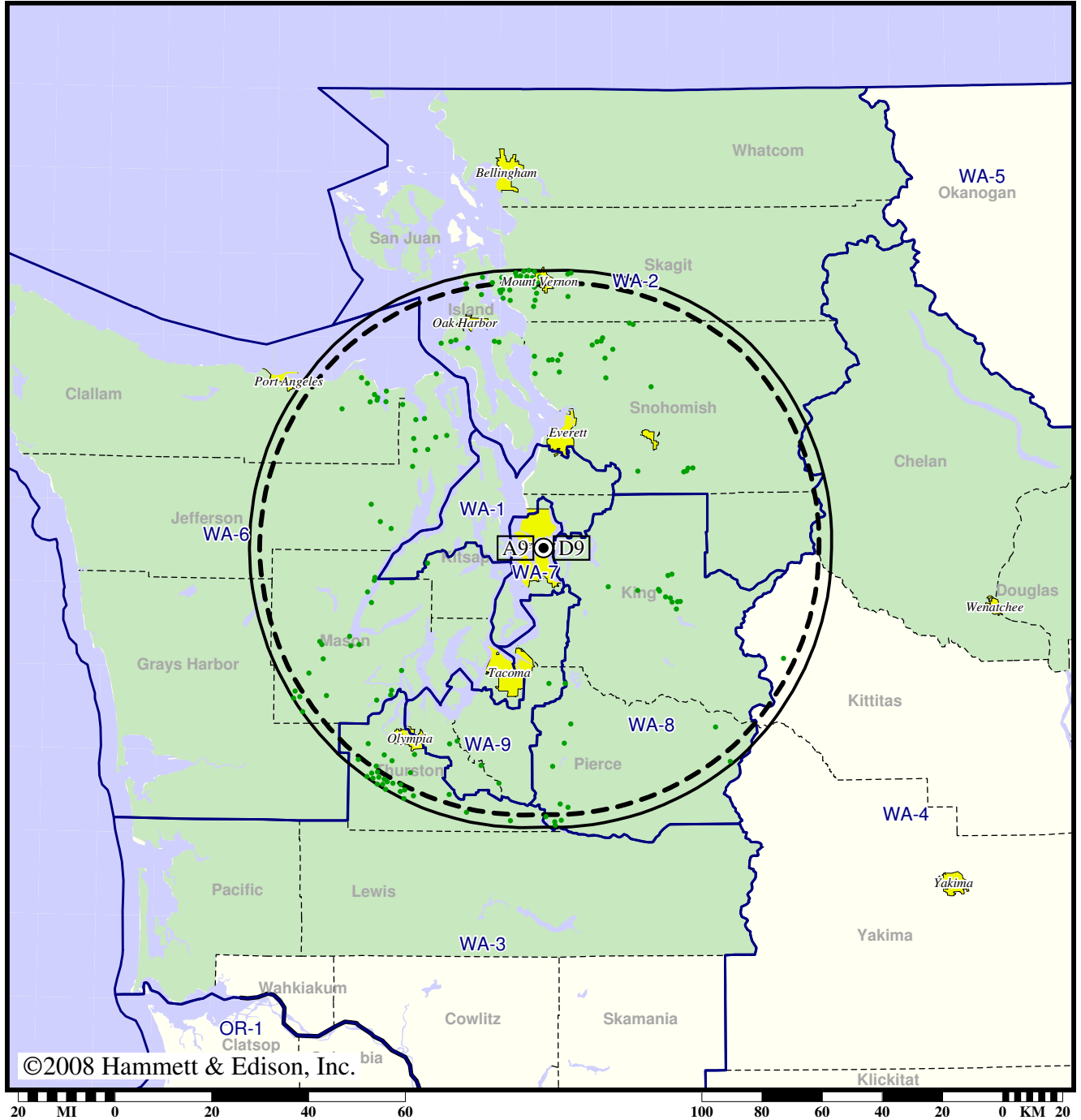
● Coverage gained after DTV transition
(no symbol) No change in coverage

Station KCTS-TV • Analog Channel 9, DTV Channel 9 • Seattle, WA

Expected Change In Coverage: Granted Construction Permit

CP (solid): 21.7 kW ERP at 249 m HAAT, Network: PBS
vs. Analog (dashed): 316 kW ERP at 249 m HAAT, Network: PBS

Market: Seattle-Tacoma, WA



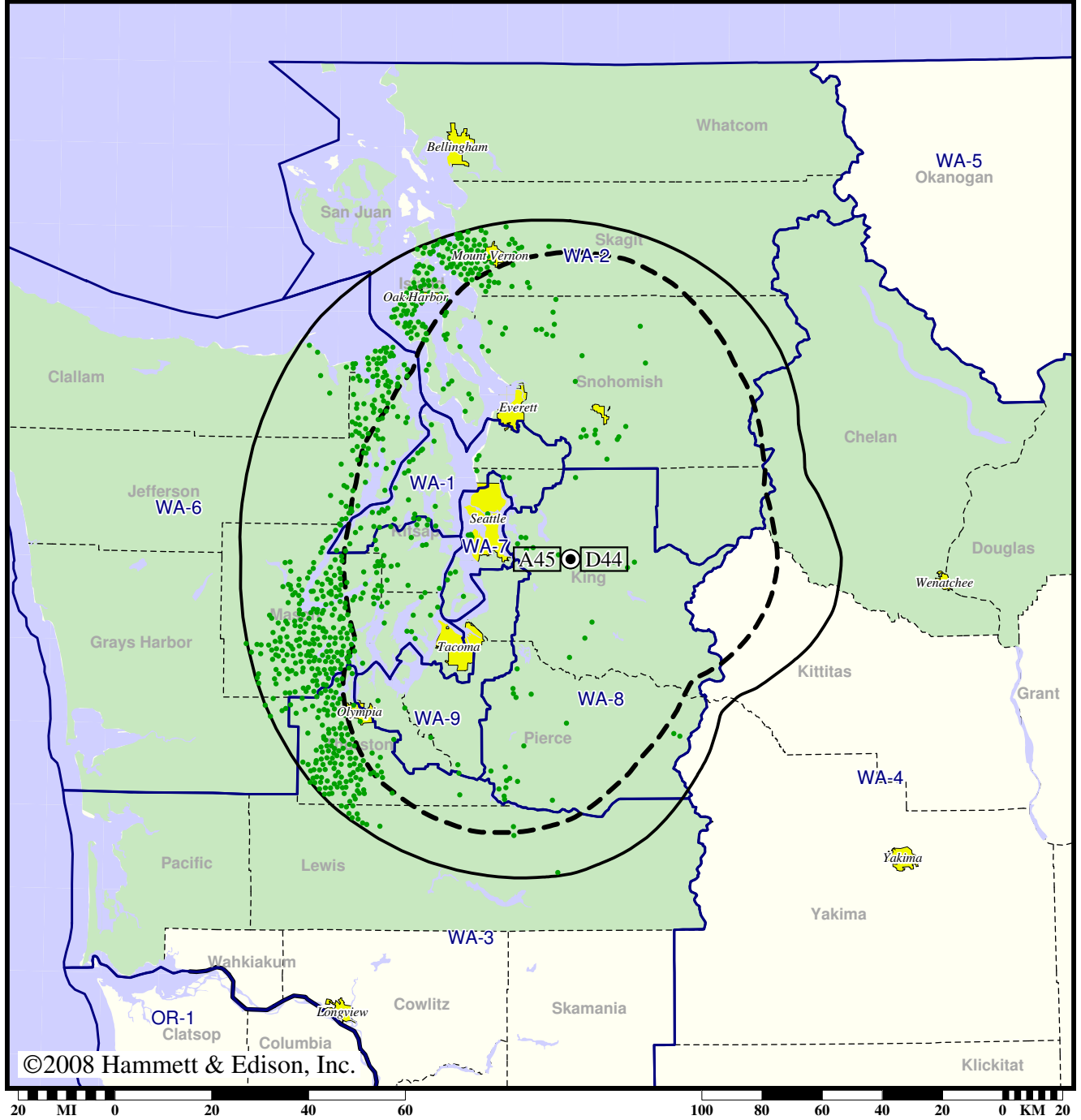
● Coverage gained after DTV transition
(no symbol) No change in coverage

TV Station KHCV • Analog Channel 45, DTV Channel 44 • Seattle, WA

Expected Change In Coverage: Granted Construction Permit

CP (solid): 240 kW ERP at 710 m HAAT
vs. Analog (dashed): 2000 kW ERP at 714 m HAAT

Market: Seattle-Tacoma, WA



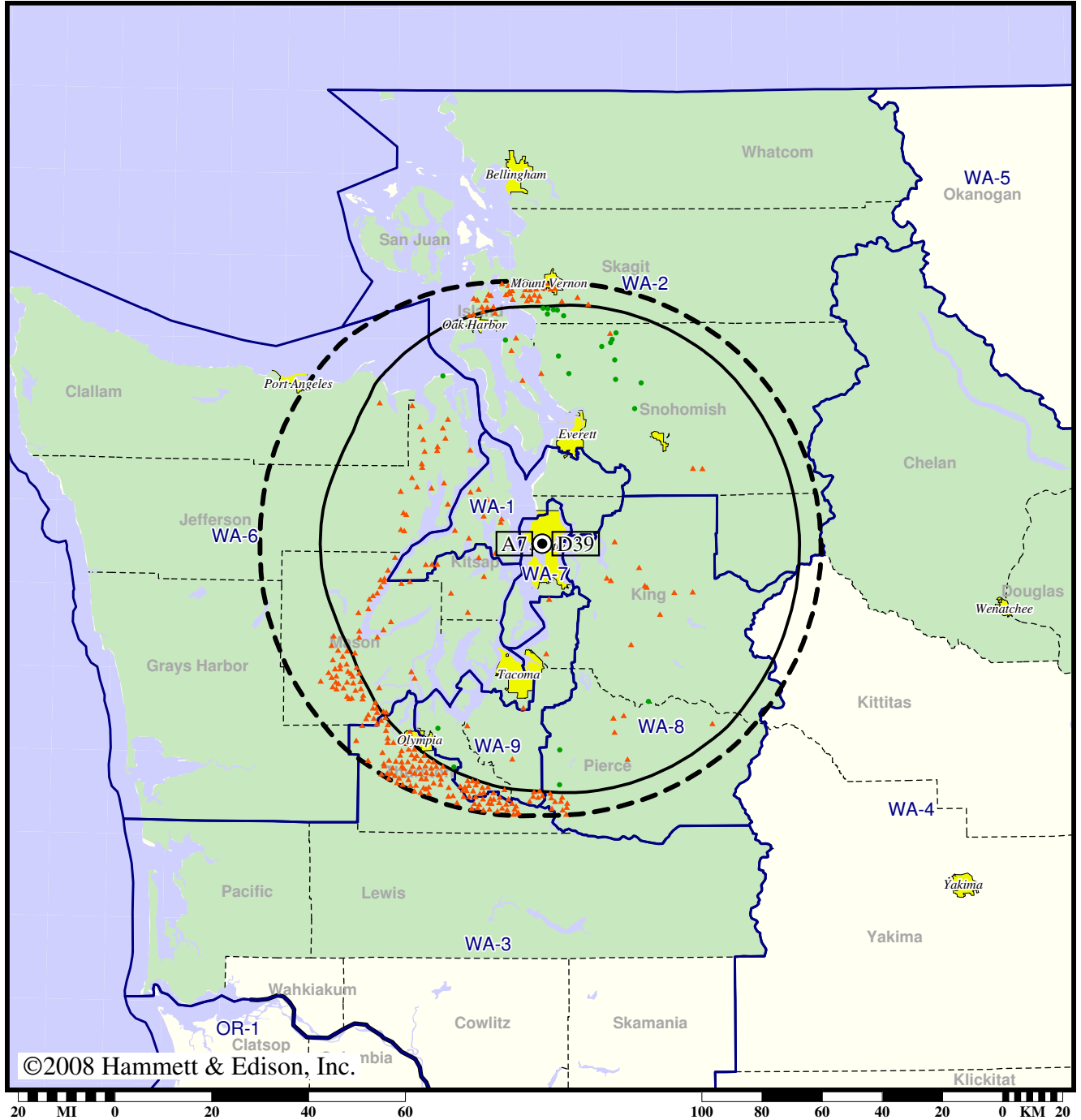
- Coverage gained after DTV transition
- (no symbol) No change in coverage

Station KIRO-TV • Analog Channel 7, DTV Channel 39 • Seattle, WA

Expected Change In Coverage: Licensed Operation

Licensed (solid): 1000 kW ERP at 230 m HAAT, Network: CBS
vs. Analog (dashed): 316 kW ERP at 250 m HAAT, Network: CBS

Market: Seattle-Tacoma, WA



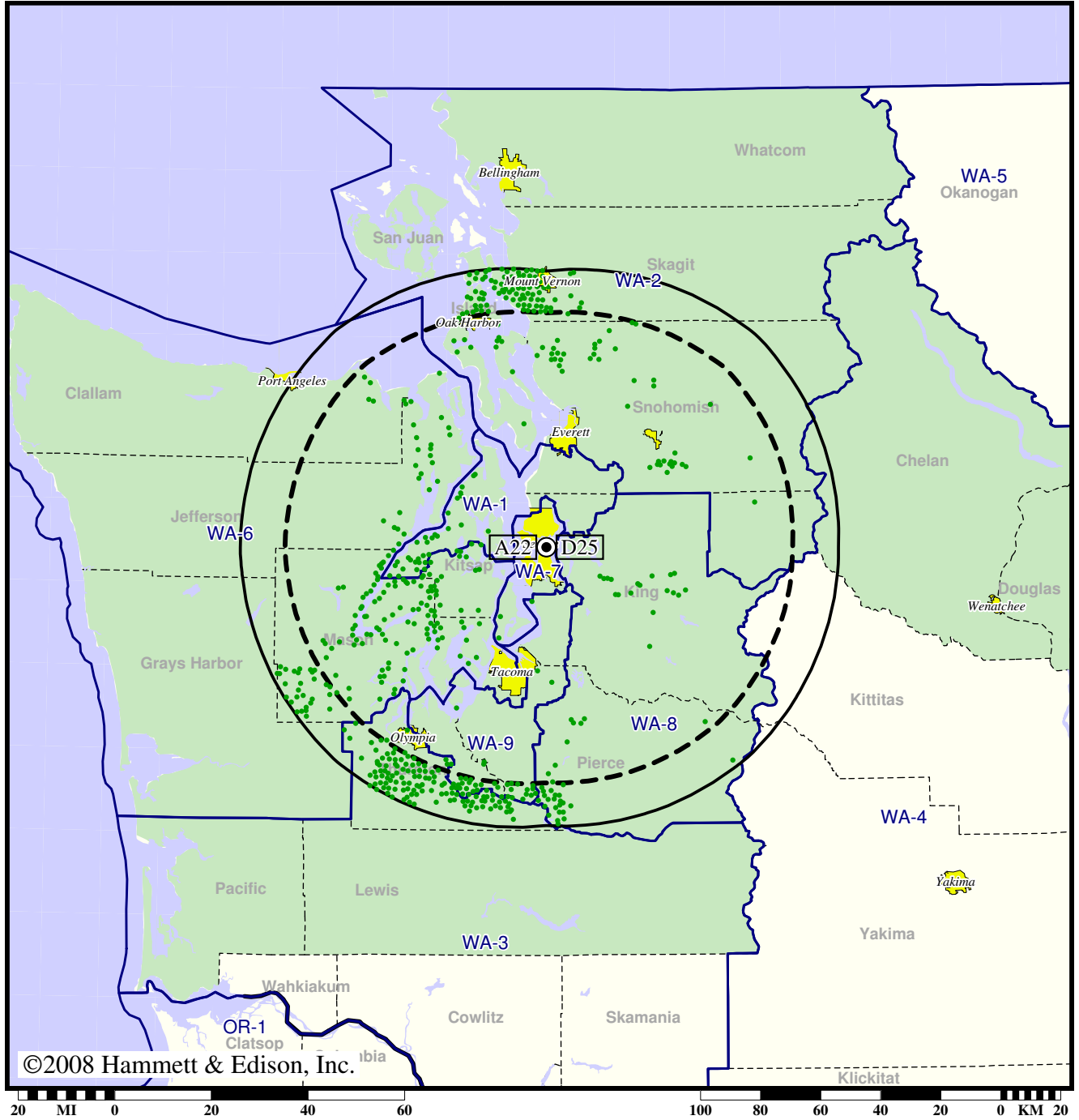
- Coverage gained after DTV transition
- (no symbol) No change in coverage
- ▲ Coverage lost after DTV transition

TV Station KMYQ • Analog Channel 22, DTV Channel 25 • Seattle, WA

Expected Change In Coverage: Granted Construction Permit

CP (solid): 1000 kW ERP at 290 m HAAT
vs. Analog (dashed): 5000 kW ERP at 271 m HAAT

Market: Seattle-Tacoma, WA



©2008 Hammett & Edison, Inc.

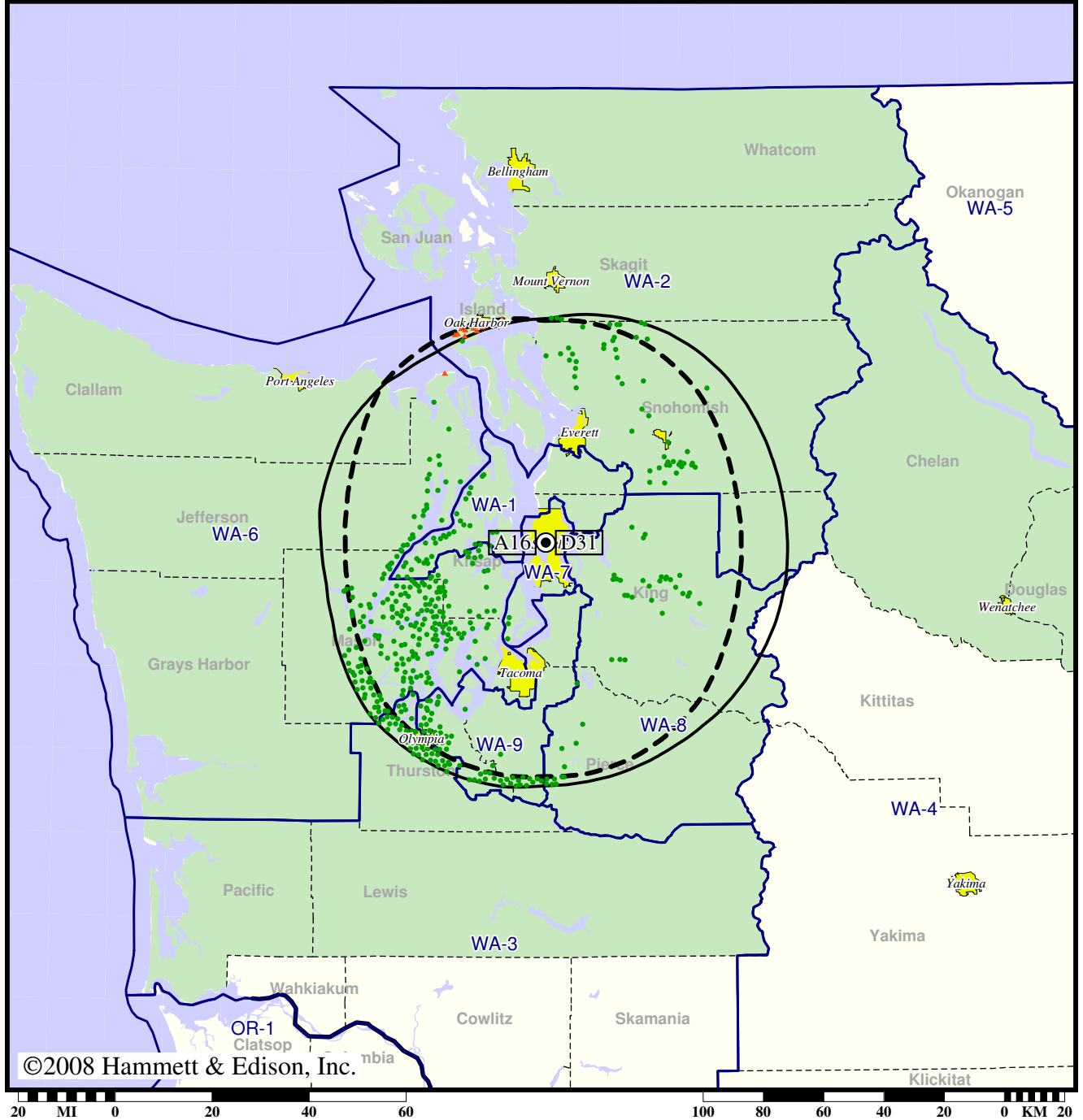
● Coverage gained after DTV transition
(no symbol) No change in coverage

Station KONG-TV • Analog Channel 16, DTV Channel 31 • Everett, WA

Expected Change In Coverage: Licensed Operation

Licensed (solid): 700 kW ERP at 218 m HAAT
vs. Analog (dashed): 5000 kW ERP at 239 m HAAT

Market: Seattle-Tacoma, WA



©2008 Hammett & Edison, Inc.

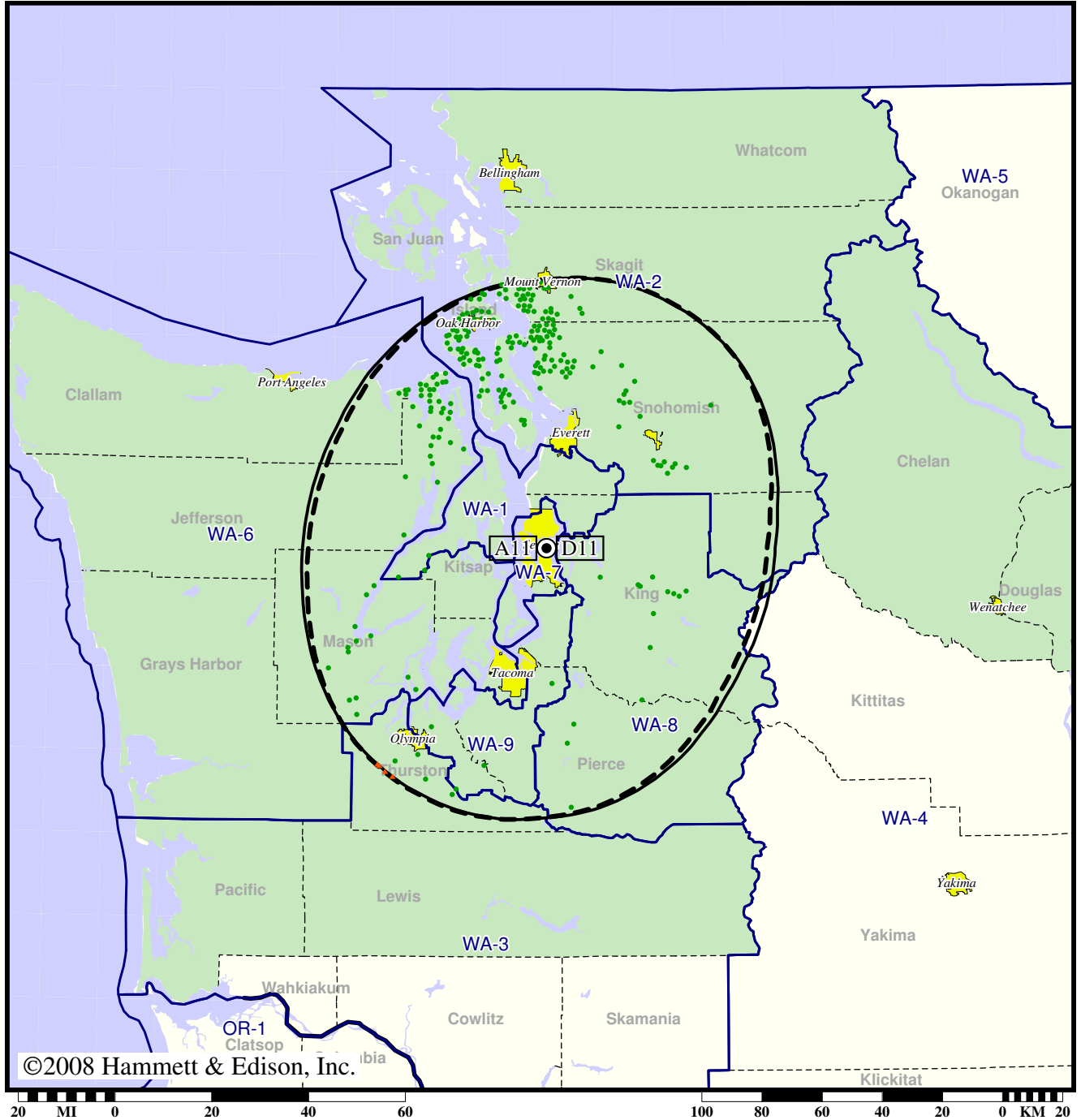
- Coverage gained after DTV transition
- (no symbol) No change in coverage
- ▲ Coverage lost after DTV transition

TV Station KSTW • Analog Channel 11, DTV Channel 11 • Tacoma, WA

Expected Change In Coverage: Granted Construction Permit

CP (solid): 12.5 kW ERP at 276 m HAAT
vs. Analog (dashed): 316 kW ERP at 276 m HAAT

Market: Seattle-Tacoma, WA



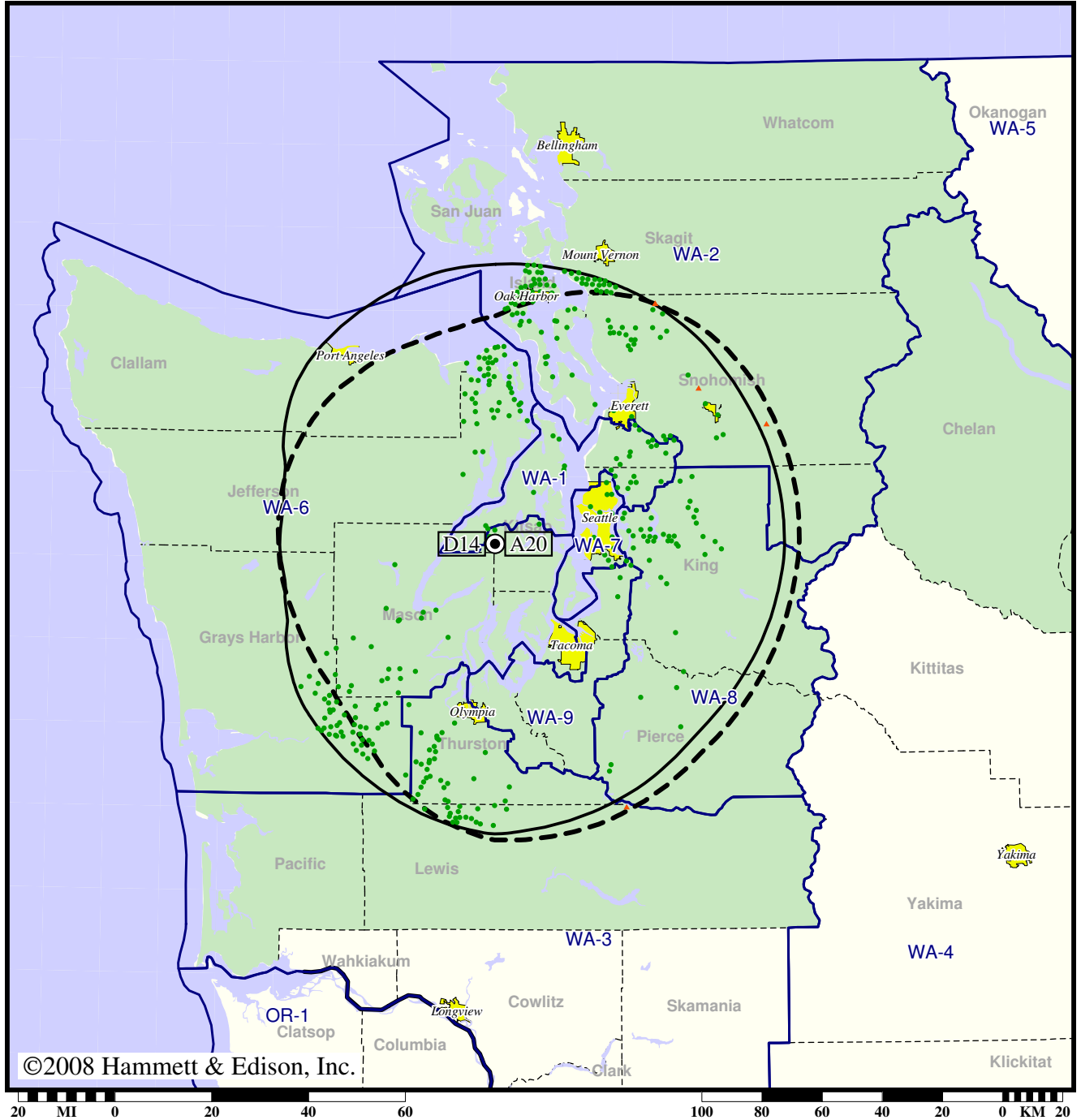
- Coverage gained after DTV transition
- (no symbol) No change in coverage
- ▲ Coverage lost after DTV transition

Station KTBW-TV • Analog Channel 20, DTV Channel 14 • Tacoma, WA

Expected Change In Coverage: Licensed Operation

Licensed (solid): 90.0 kW ERP at 473 m HAAT
vs. Analog (dashed): 3550 kW ERP at 491 m HAAT

Market: Seattle-Tacoma, WA



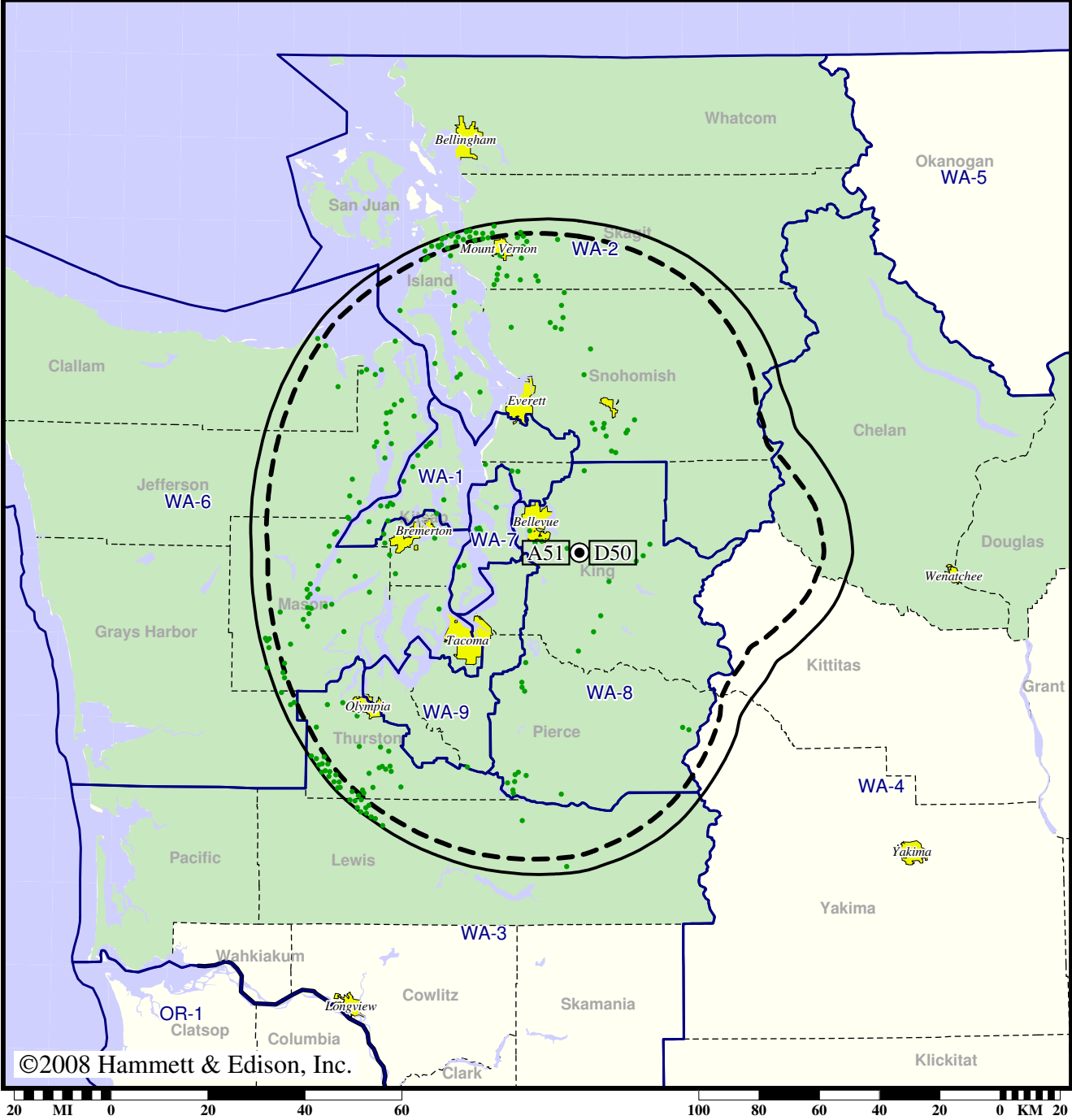
- Coverage gained after DTV transition
- (no symbol) No change in coverage
- ▲ Coverage lost after DTV transition

Station KUNS-TV • Analog Channel 51, DTV Channel 50 • Bellevue, WA

Expected Change In Coverage: Licensed Operation

Licensed (solid): 240 kW ERP at 719 m HAAT
vs. Analog (dashed): 3800 kW ERP at 719 m HAAT

Market: Seattle-Tacoma, WA



©2008 Hammett & Edison, Inc.

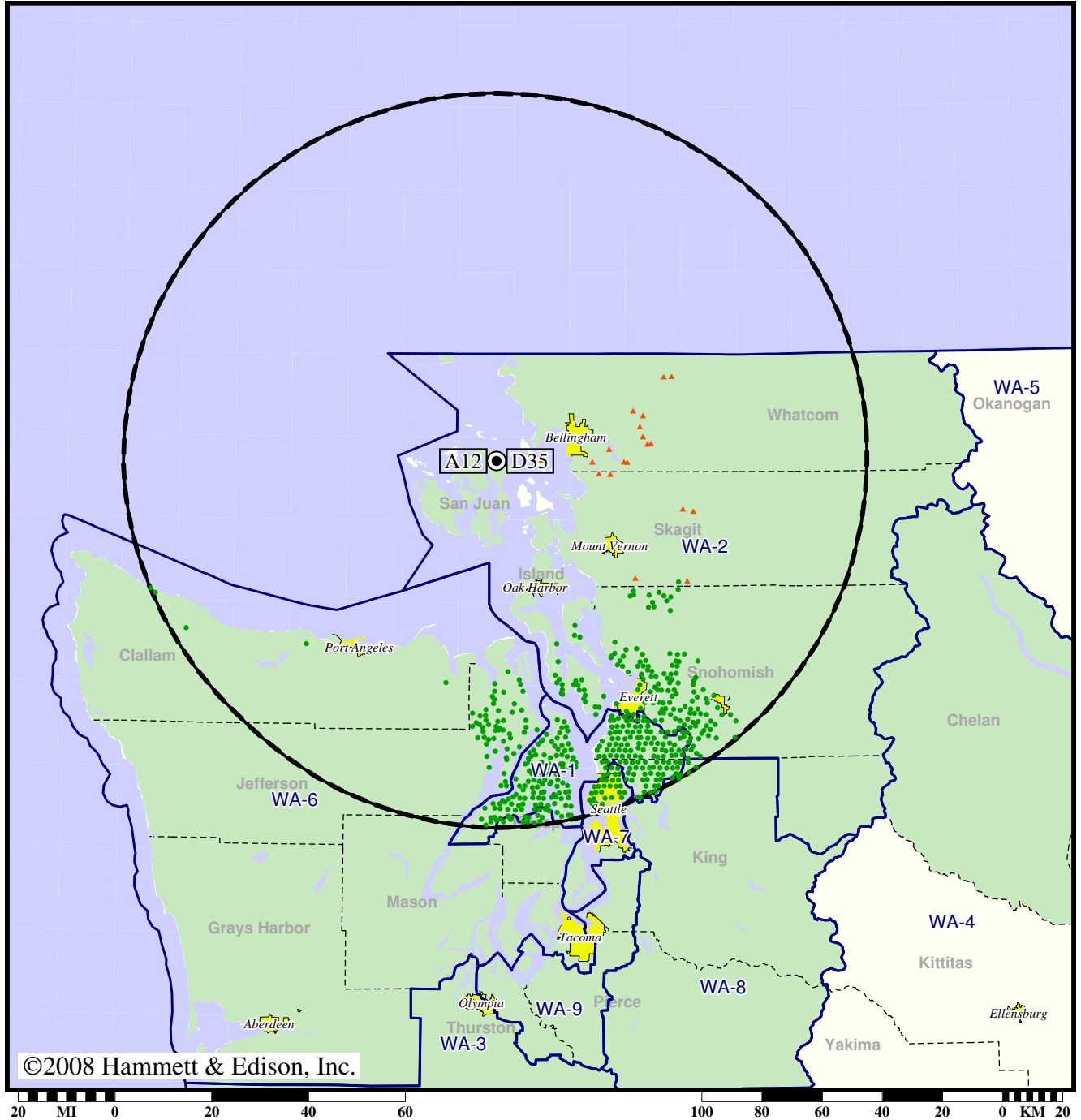
- Coverage gained after DTV transition
- (no symbol) No change in coverage

Station KVOS-TV • Analog Channel 12, DTV Channel 35 • Bellingham, WA

Expected Change In Coverage: Post-Transition Appendix B Facility

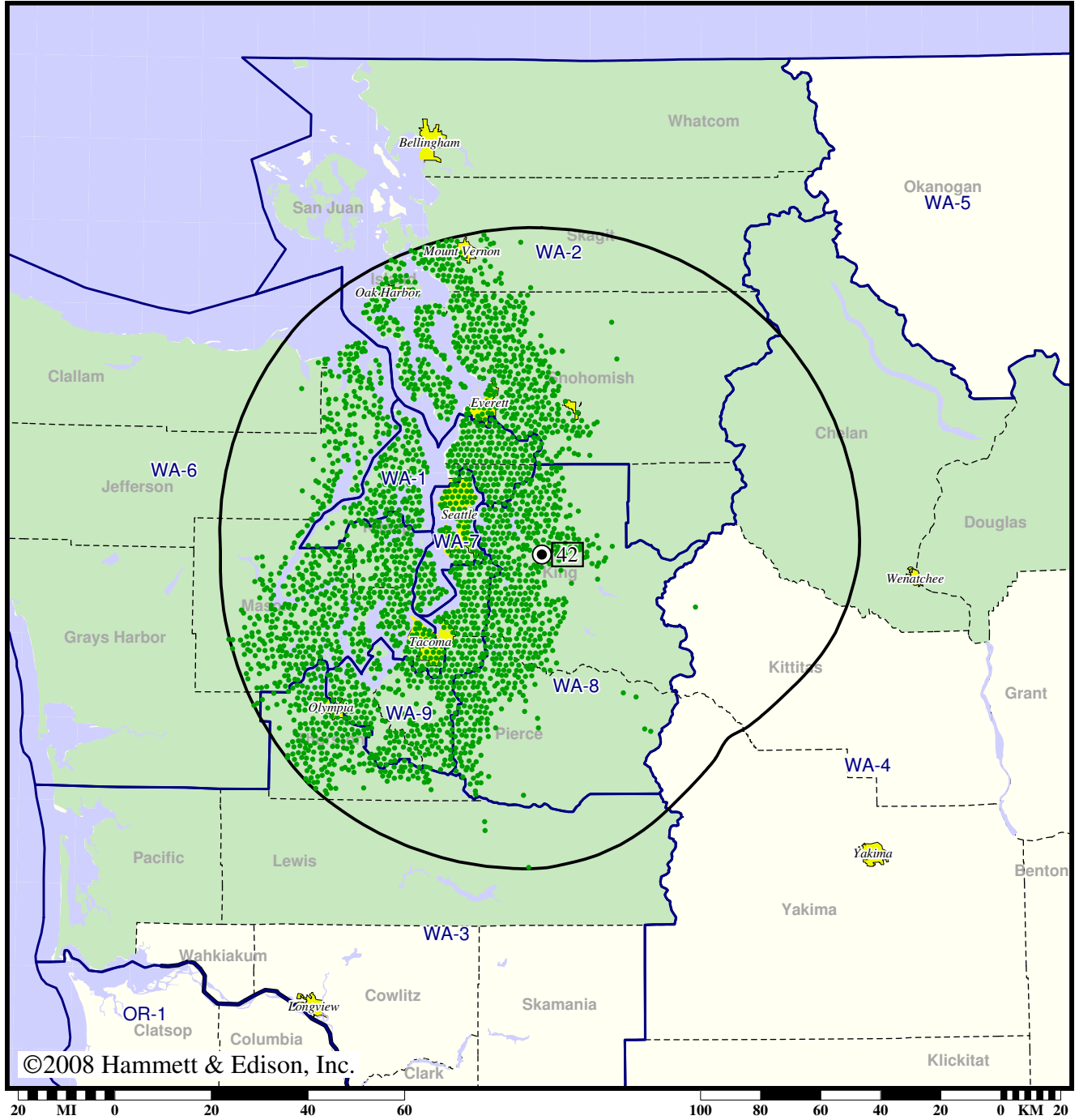
Appendix B (solid): 612 kW ERP at 722 m HAAT
vs. Analog (dashed): 234 kW ERP at 722 m HAAT

Market: Seattle-Tacoma, WA



- Coverage gained after DTV transition
- (no symbol) No change in coverage
- ▲ Coverage lost after DTV transition

DTV Station KWDK • Channel 42 • Tacoma, WA
Expected Change In Coverage: Licensed Operation
Licensed (solid): 144 kW ERP at 695 m HAAT
Market: Seattle-Tacoma, WA



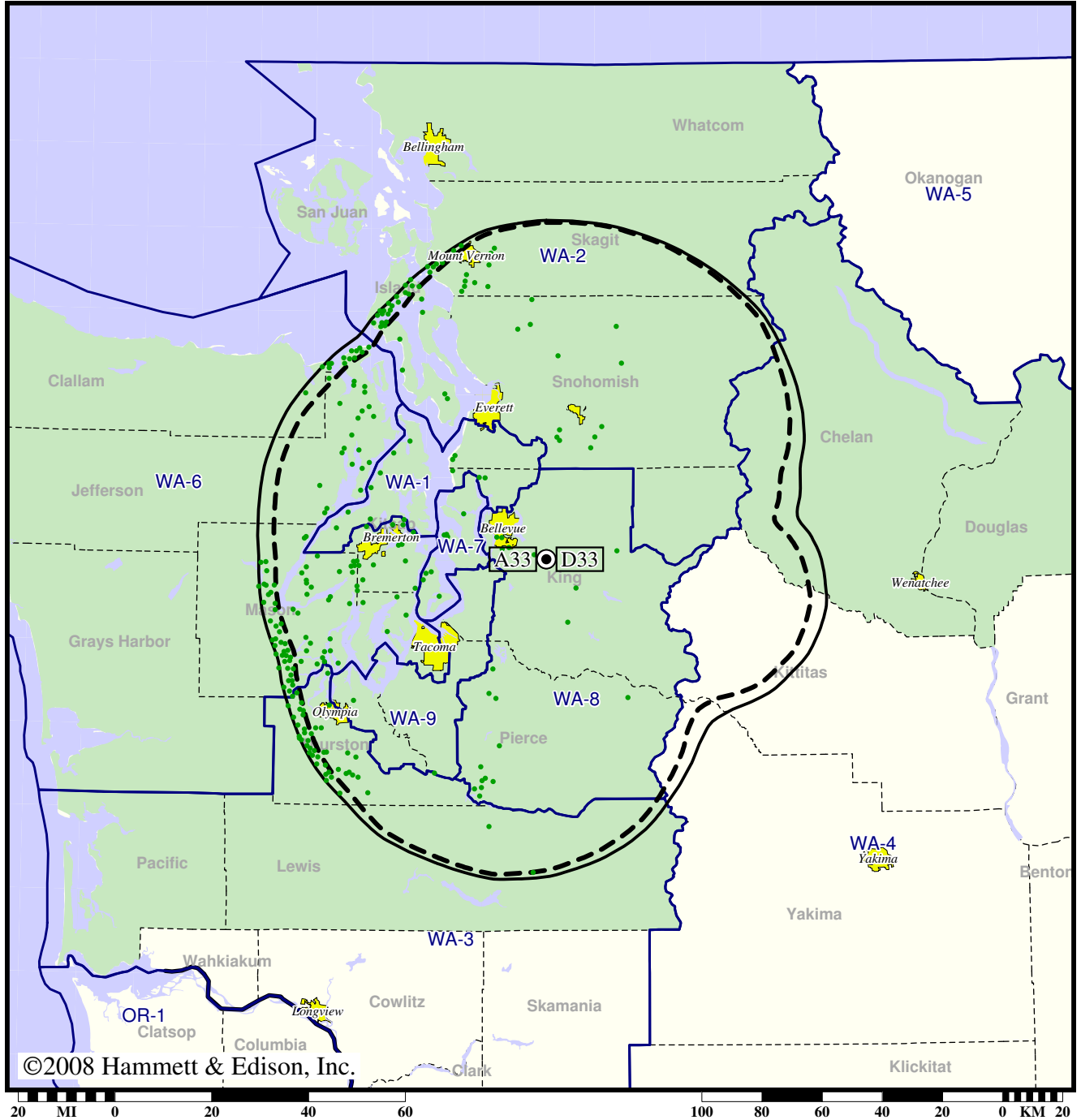
● Coverage gained after DTV transition
(no symbol) No change in coverage

TV Station KWPX • Analog Channel 33, DTV Channel 33 • Bellevue, WA

Expected Change In Coverage: Granted Construction Permit

CP (solid): 179 kW ERP at 716 m HAAT
vs. Analog (dashed): 3720 kW ERP at 717 m HAAT

Market: Seattle-Tacoma, WA



©2008 Hammett & Edison, Inc.

- Coverage gained after DTV transition
- (no symbol) No change in coverage