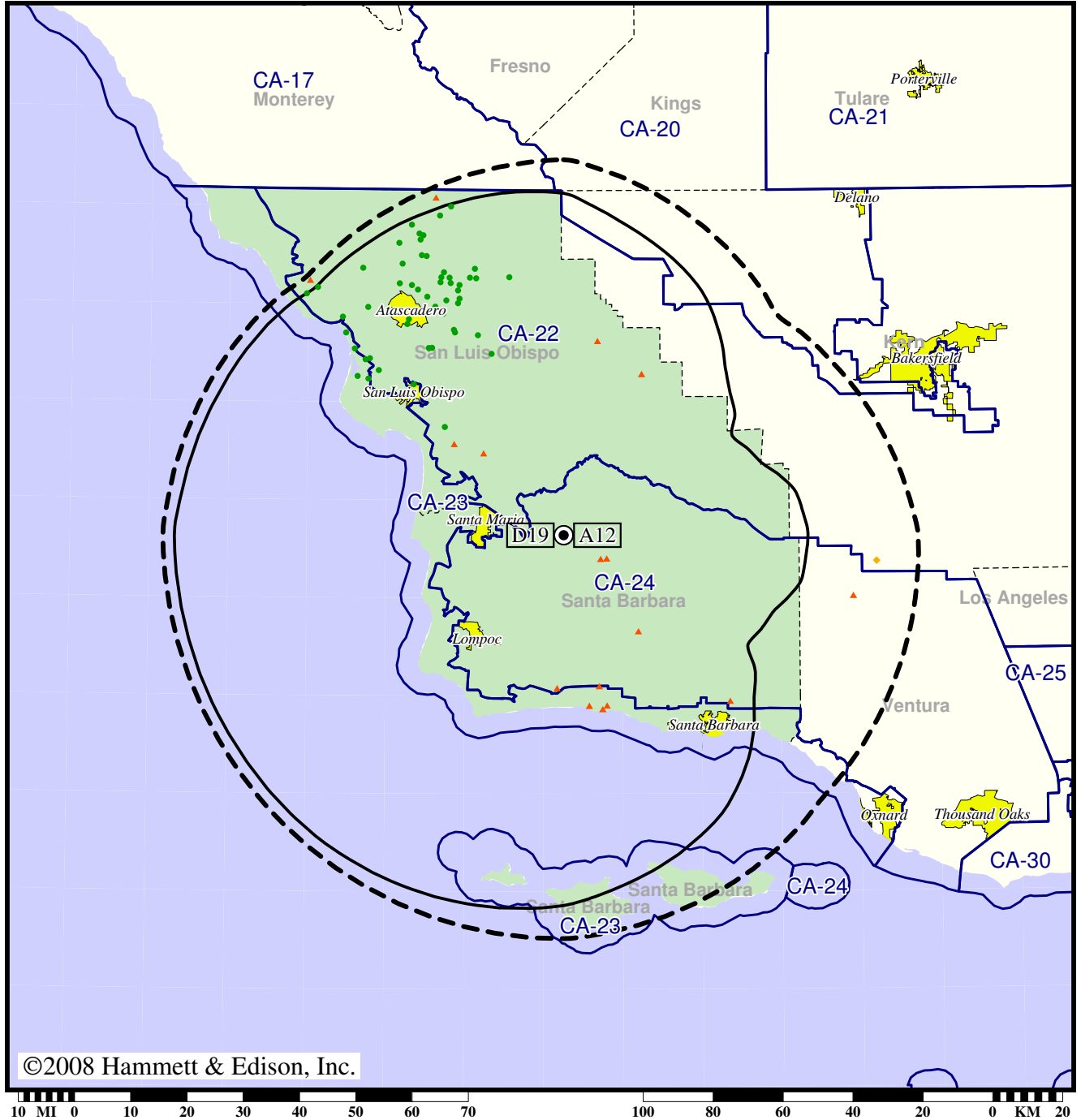


Station KCOY-TV • Analog Channel 12, DTV Channel 19 • Santa Maria, CA

Expected Change In Coverage: Licensed Operation

Licensed (solid): 130 kW ERP at 579 m HAAT, Network: CBS
 vs. Analog (dashed): 115 kW ERP at 591 m HAAT, Network: CBS

Market: Santa Barbara-Santa Maria-San Luis Obispo, CA



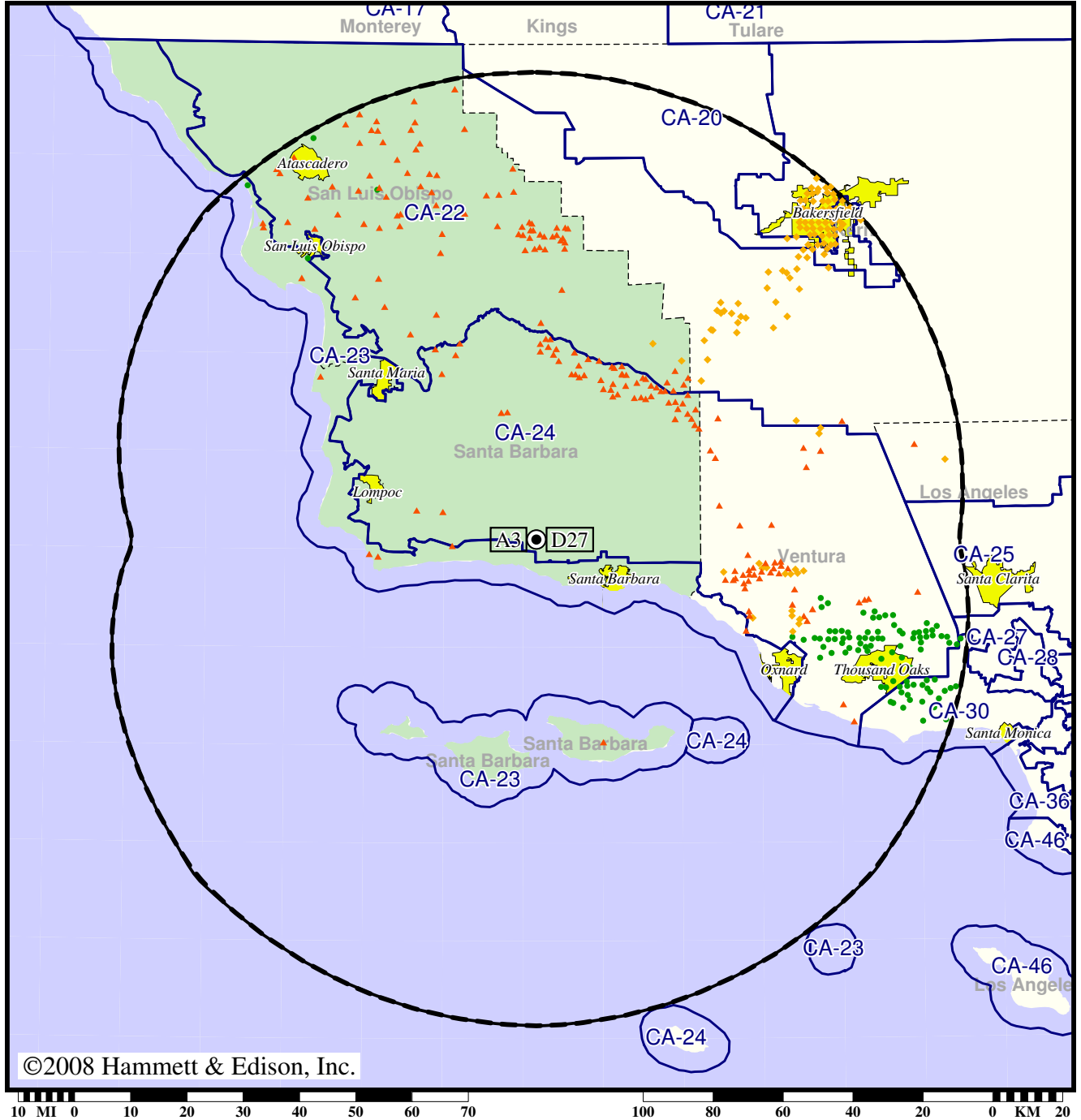
- Coverage gained after DTV transition
- (no symbol) No change in coverage
- ◆ Coverage lost but still served by same network
- ▲ Coverage lost and no other service by same network

Station KEYT-TV • Analog Channel 3, DTV Channel 27 • Santa Barbara, CA

Expected Change In Coverage: Post-Transition Appendix B Facility

Appendix B (solid): 699 kW ERP at 917 m HAAT, Network: ABC
vs. Analog (dashed): 50.1 kW ERP at 917 m HAAT, Network: ABC

Market: Santa Barbara-Santa Maria-San Luis Obispo, CA



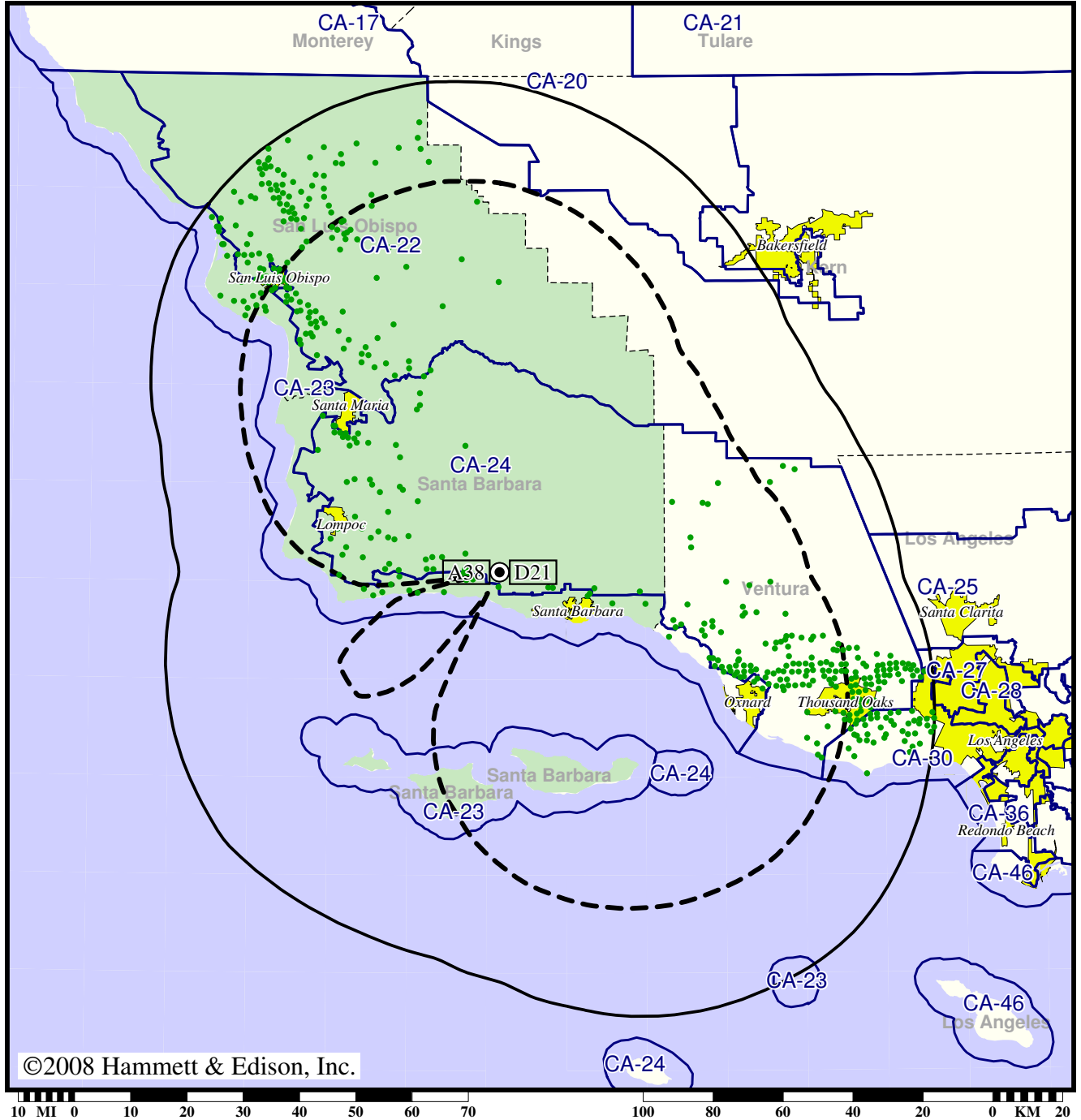
- Coverage gained after DTV transition
- (no symbol) No change in coverage
- ◆ Coverage lost but still served by same network
- ▲ Coverage lost and no other service by same network

TV Station KPMR • Analog Channel 38, DTV Channel 21 • Santa Barbara, CA

Expected Change In Coverage: Post-Transition Appendix B Facility

Appendix B (solid): 1000 kW ERP at 923 m HAAT
vs. Analog (dashed): 2450 kW ERP at 924 m HAAT

Market: Santa Barbara-Santa Maria-San Luis Obispo, CA



©2008 Hammett & Edison, Inc.

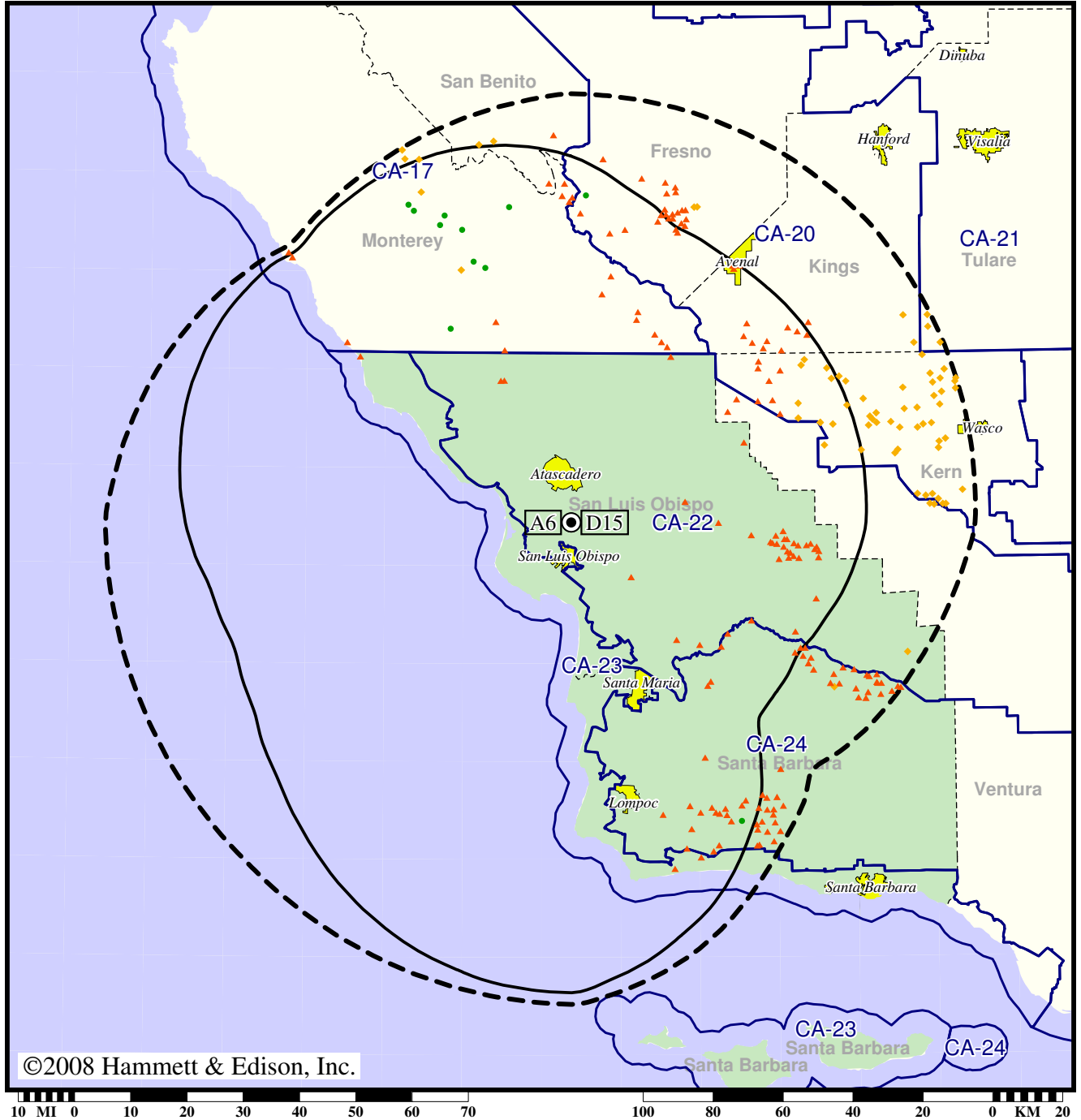
- Coverage gained after DTV transition
- (no symbol) No change in coverage

TV Station KSBY • Analog Channel 6, DTV Channel 15 • San Luis Obispo, CA

Expected Change In Coverage: Post-Transition Appendix B Facility

Appendix B (solid): 1000 kW ERP at 515 m HAAT, Network: NBC
vs. Analog (dashed): 100 kW ERP at 543 m HAAT, Network: NBC

Market: Santa Barbara-Santa Maria-San Luis Obispo, CA



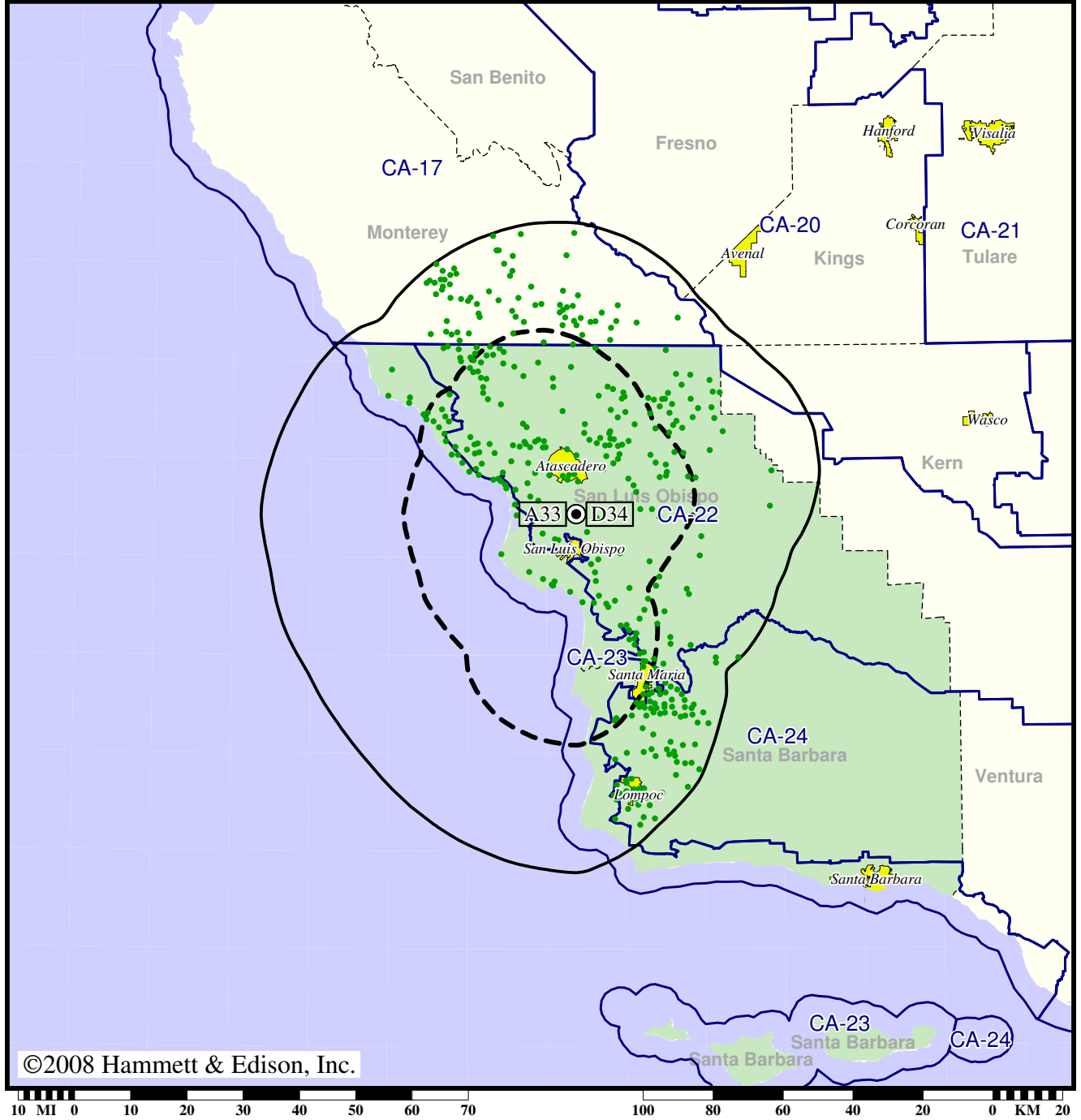
- Coverage gained after DTV transition
- (no symbol) No change in coverage
- ◆ Coverage lost but still served by same network
- ▲ Coverage lost and no other service by same network

TV Station KTAS • Analog Channel 33, DTV Channel 34 • San Luis Obispo, CA

Expected Change In Coverage: Licensed Operation

Licensed (solid): 80.4 kW ERP at 453 m HAAT
vs. Analog (dashed): 60.3 kW ERP at 440 m HAAT

Market: Santa Barbara-Santa Maria-San Luis Obispo, CA



- Coverage gained after DTV transition
- (no symbol) No change in coverage