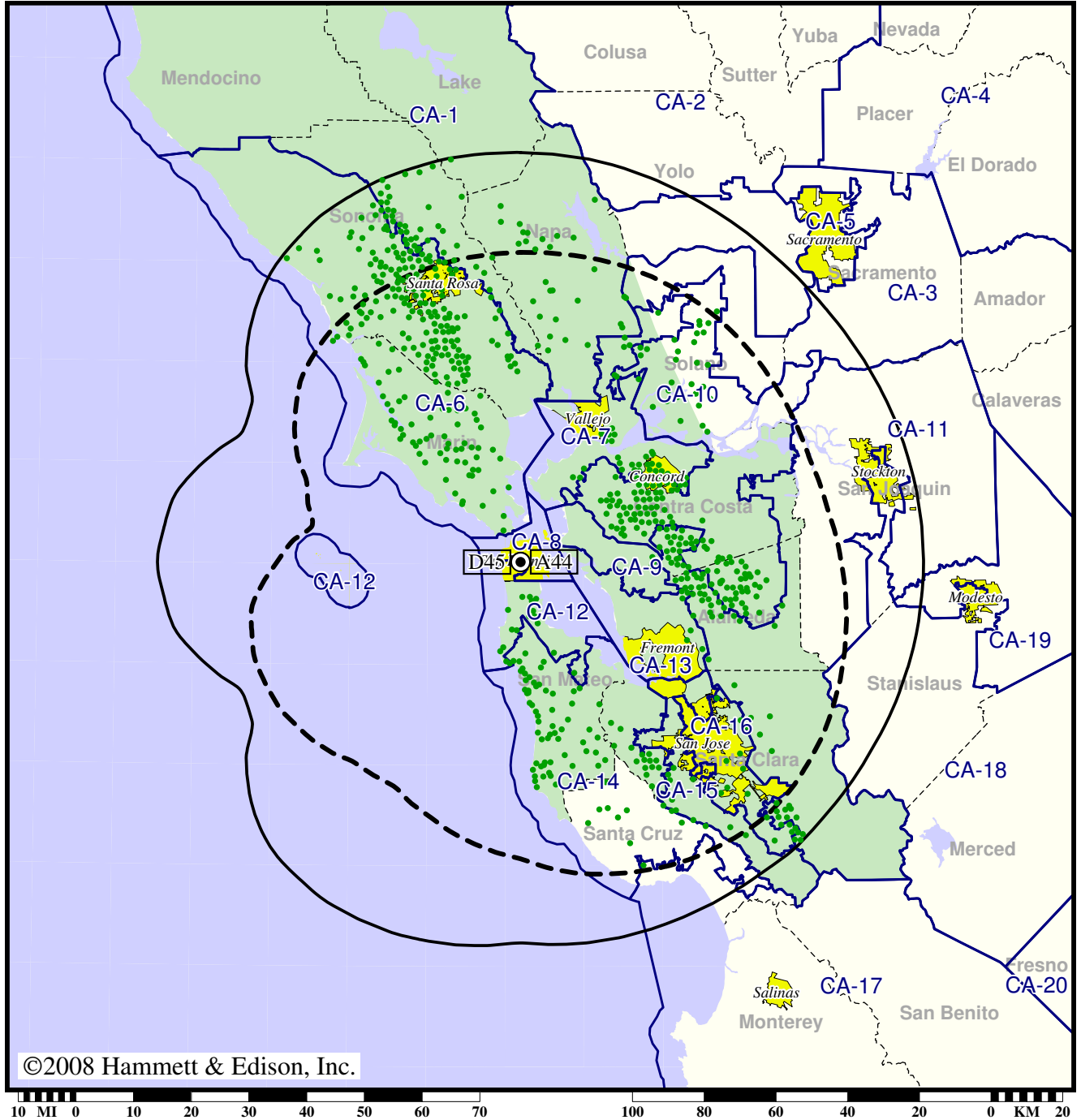


TV Station KBCW • Analog Channel 44, DTV Channel 45 • San Francisco, CA

Expected Change In Coverage: Granted Construction Permit

CP (solid): 1000 kW ERP at 490 m HAAT  
vs. Analog (dashed): 5000 kW ERP at 491 m HAAT

Market: San Francisco-Oakland-San Jose, CA



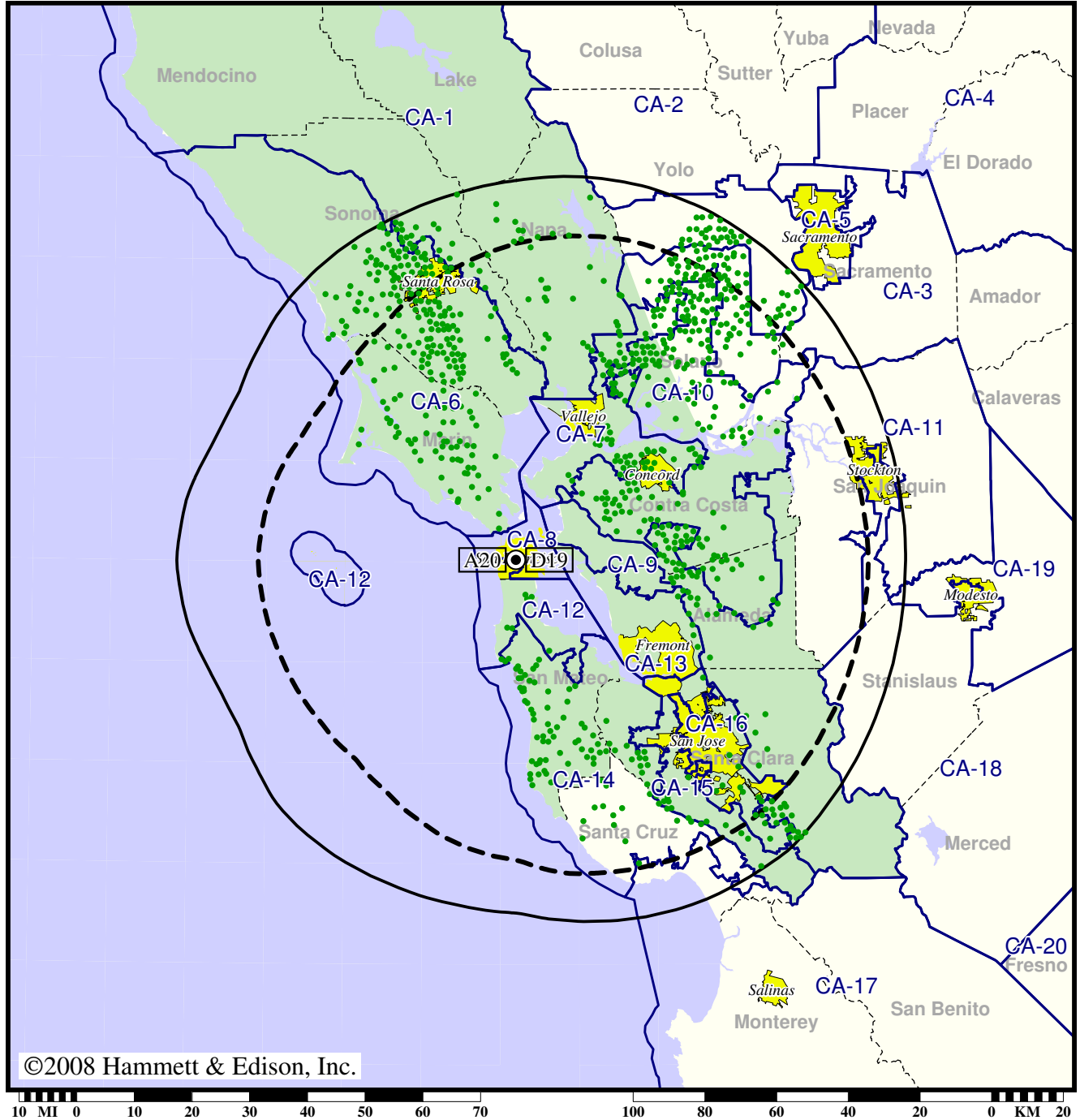
- Coverage gained after DTV transition
- (no symbol) No change in coverage

TV Station KBWB • Analog Channel 20, DTV Channel 19 • San Francisco, CA

Expected Change In Coverage: Granted Construction Permit

CP (solid): 463 kW ERP at 488 m HAAT  
vs. Analog (dashed): 3470 kW ERP at 472 m HAAT

Market: San Francisco-Oakland-San Jose, CA



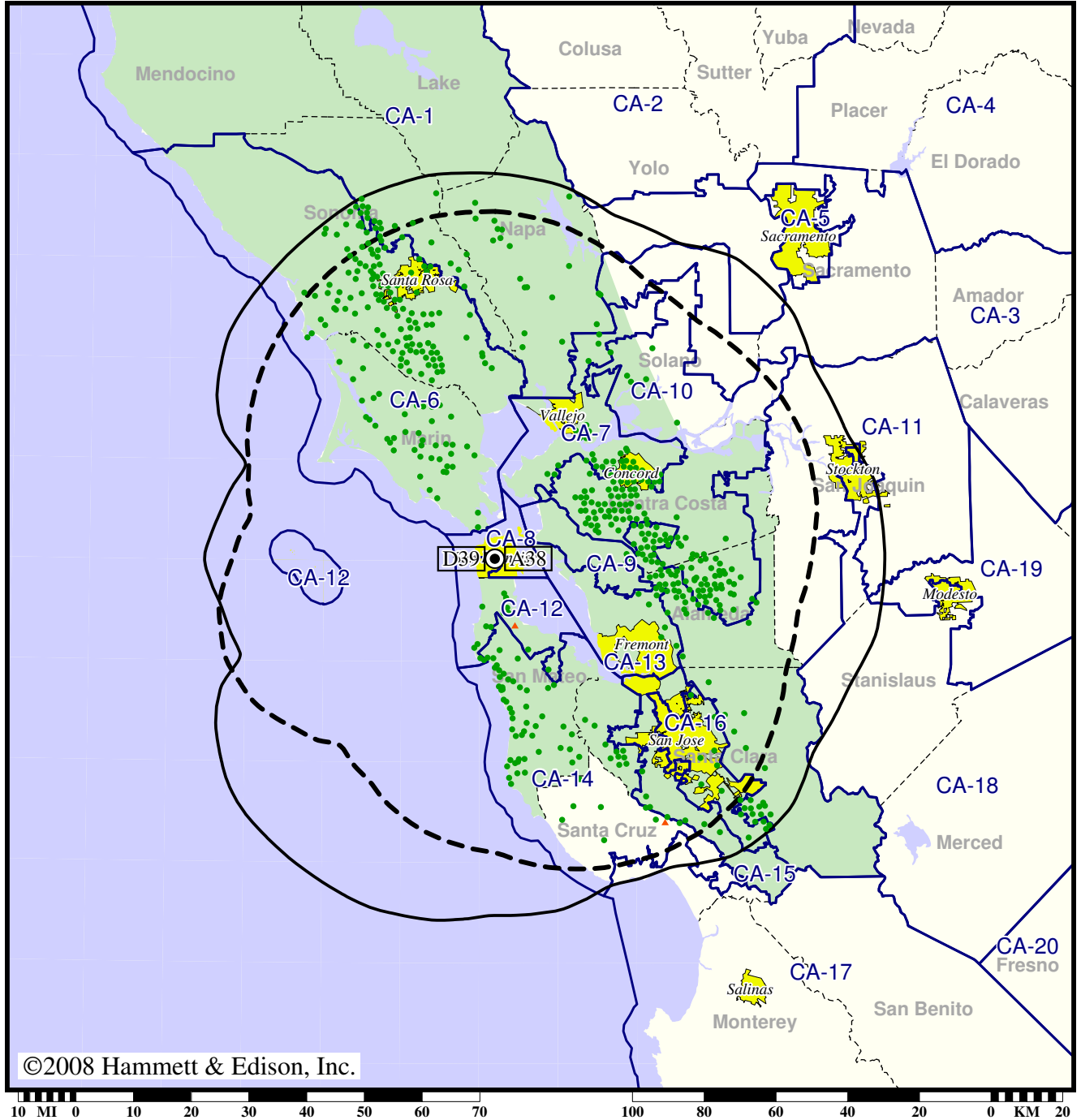
● Coverage gained after DTV transition  
(no symbol) No change in coverage

TV Station KCNS • Analog Channel 38, DTV Channel 39 • San Francisco, CA

Expected Change In Coverage: Licensed Operation

Licensed (solid): 1000 kW ERP at 428 m HAAT  
vs. Analog (dashed): 5000 kW ERP at 440 m HAAT

Market: San Francisco-Oakland-San Jose, CA



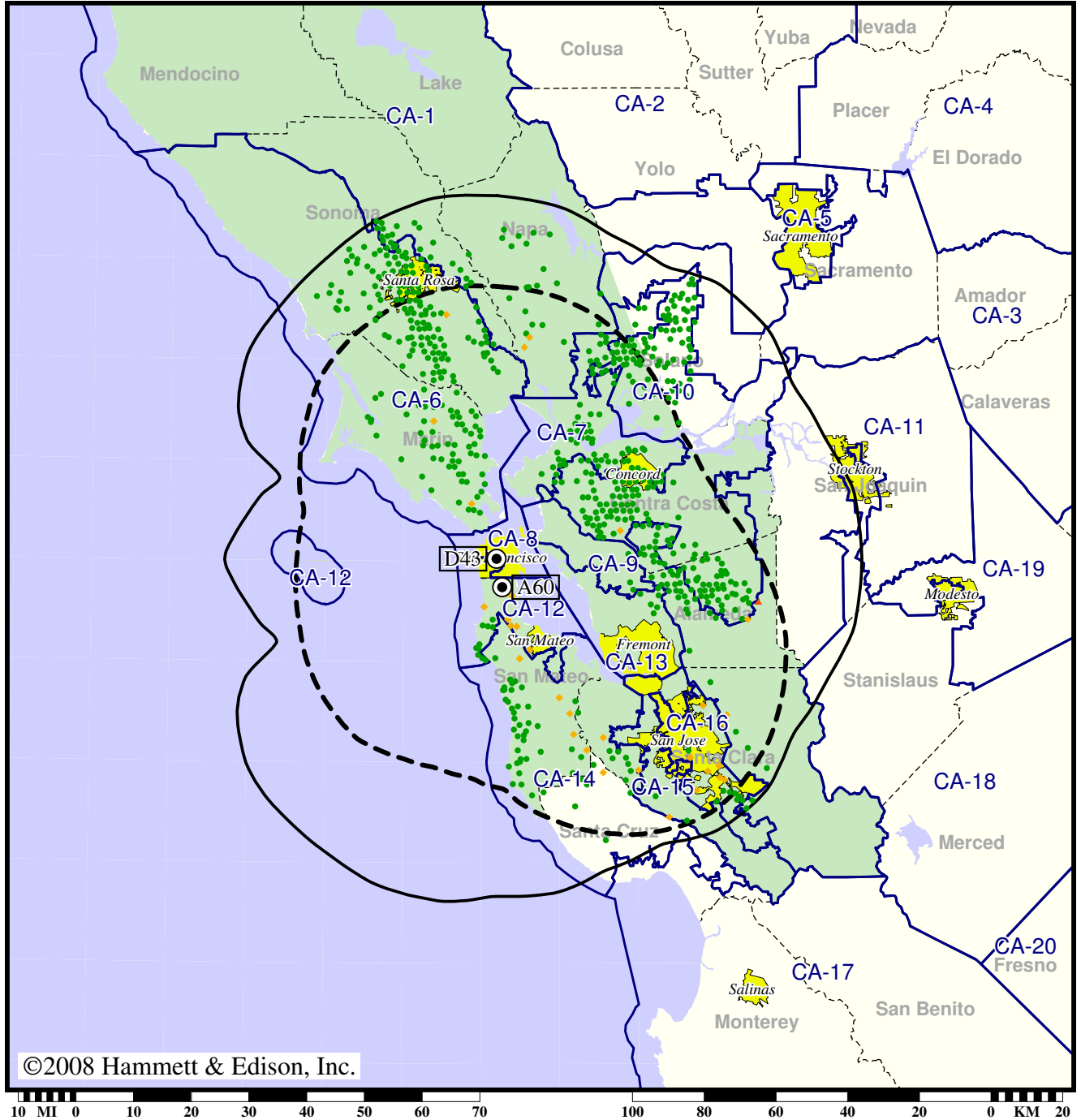
- Coverage gained after DTV transition
- (no symbol) No change in coverage
- ▲ Coverage lost after DTV transition

Station KCSM-TV • Analog Channel 60, DTV Channel 43 • San Mateo, CA

Expected Change In Coverage: Licensed Operation

Licensed (solid): 536 kW ERP at 428 m HAAT, Network: PBS  
vs. Analog (dashed): 3550 kW ERP at 370 m HAAT, Network: PBS

Market: San Francisco-Oakland-San Jose, CA



©2008 Hammett & Edison, Inc.

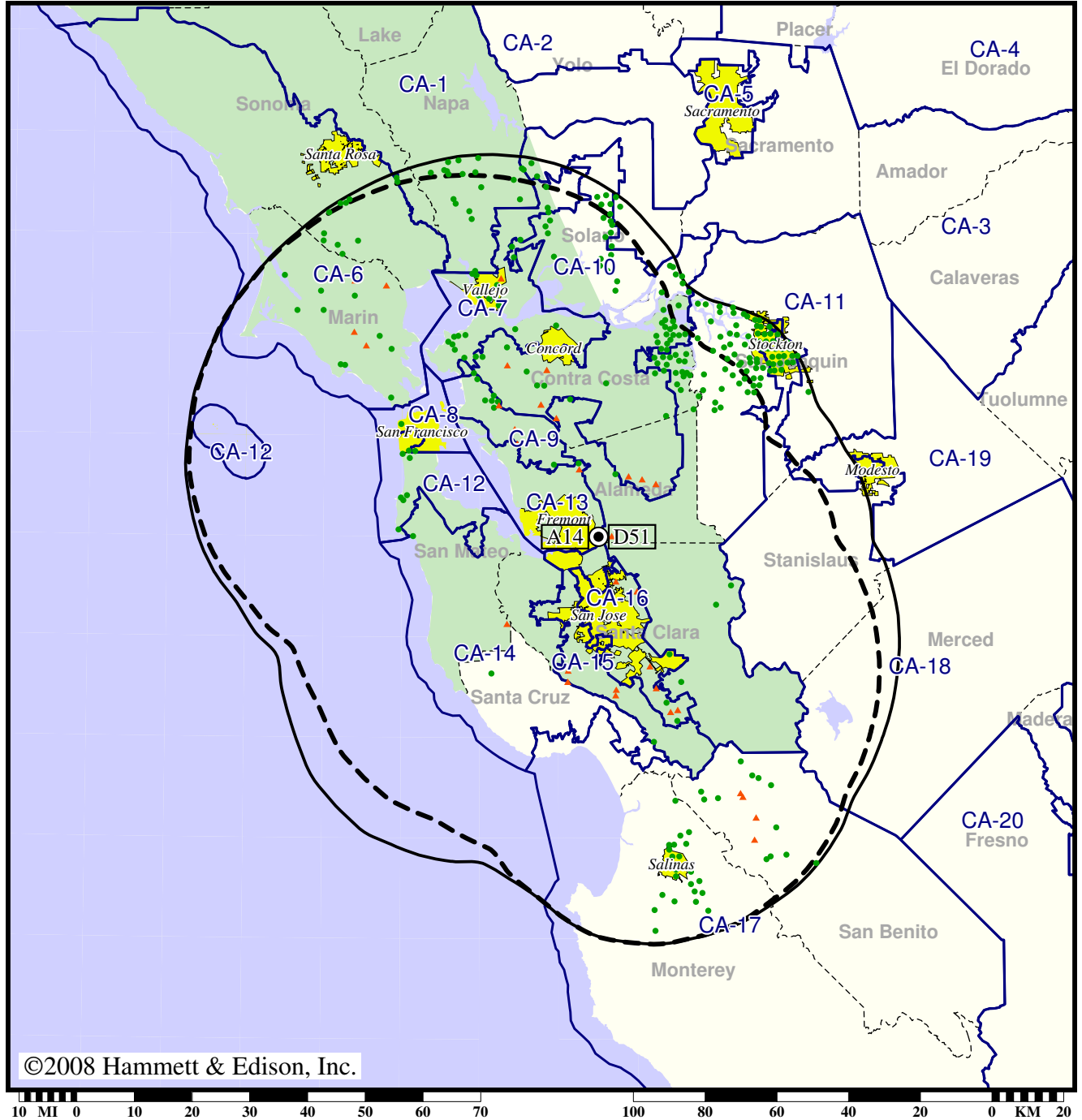
- Coverage gained after DTV transition
- (no symbol) No change in coverage
- ◆ Coverage lost but still served by same network
- ▲ Coverage lost and no other service by same network

TV Station KDTV • Analog Channel 14, DTV Channel 51 • San Francisco, CA

Expected Change In Coverage: Licensed Operation

Licensed (solid): 476 kW ERP at 701 m HAAT  
vs. Analog (dashed): 3980 kW ERP at 701 m HAAT

Market: San Francisco-Oakland-San Jose, CA



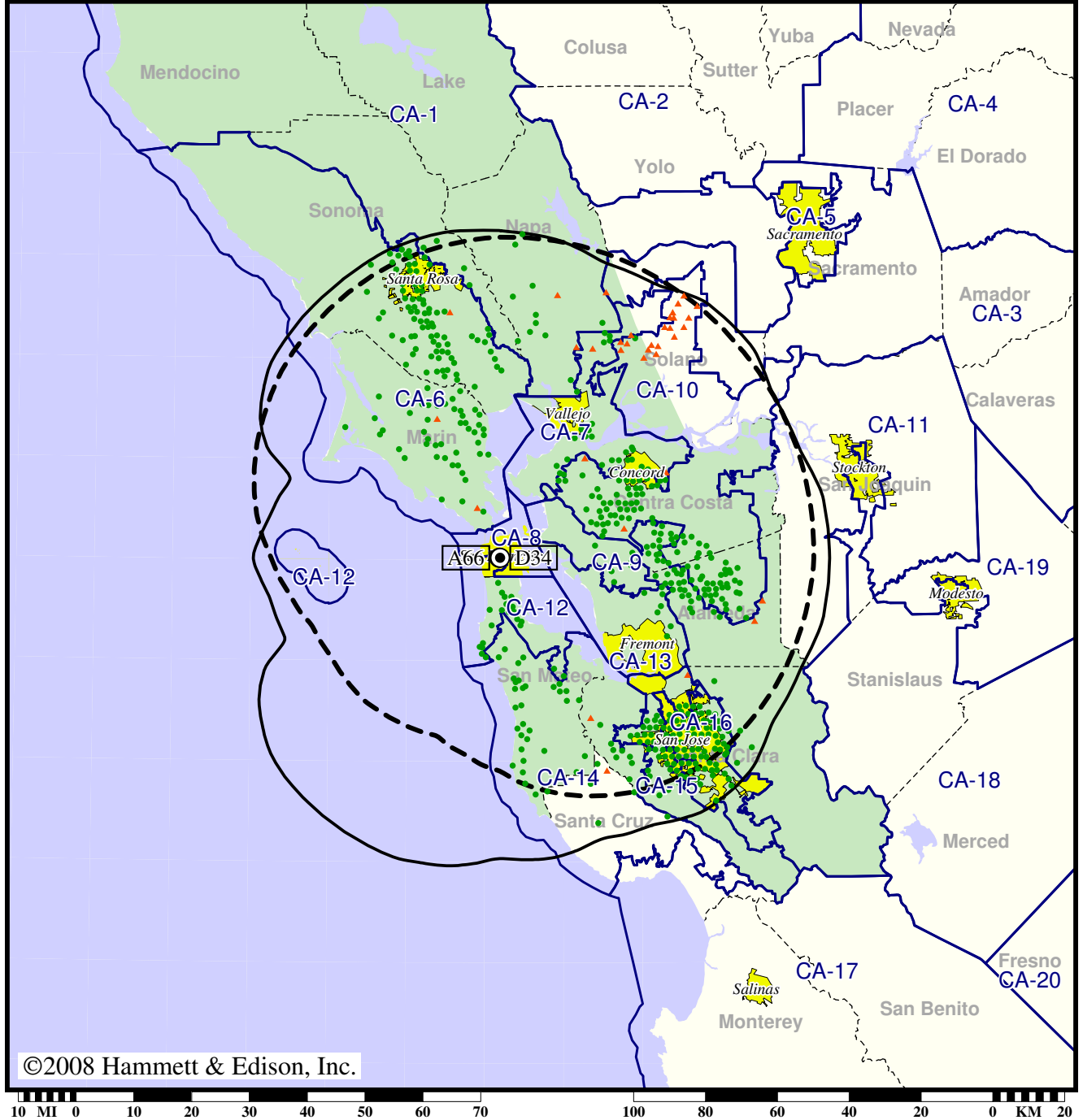
- Coverage gained after DTV transition
- (no symbol) No change in coverage
- ▲ Coverage lost after DTV transition

Station KFSF-TV • Analog Channel 66, DTV Channel 34 • Vallejo, CA

Expected Change In Coverage: Licensed Operation

Licensed (solid): 150 kW ERP at 419 m HAAT  
vs. Analog (dashed): 3470 kW ERP at 466 m HAAT

Market: San Francisco-Oakland-San Jose, CA



©2008 Hammett & Edison, Inc.

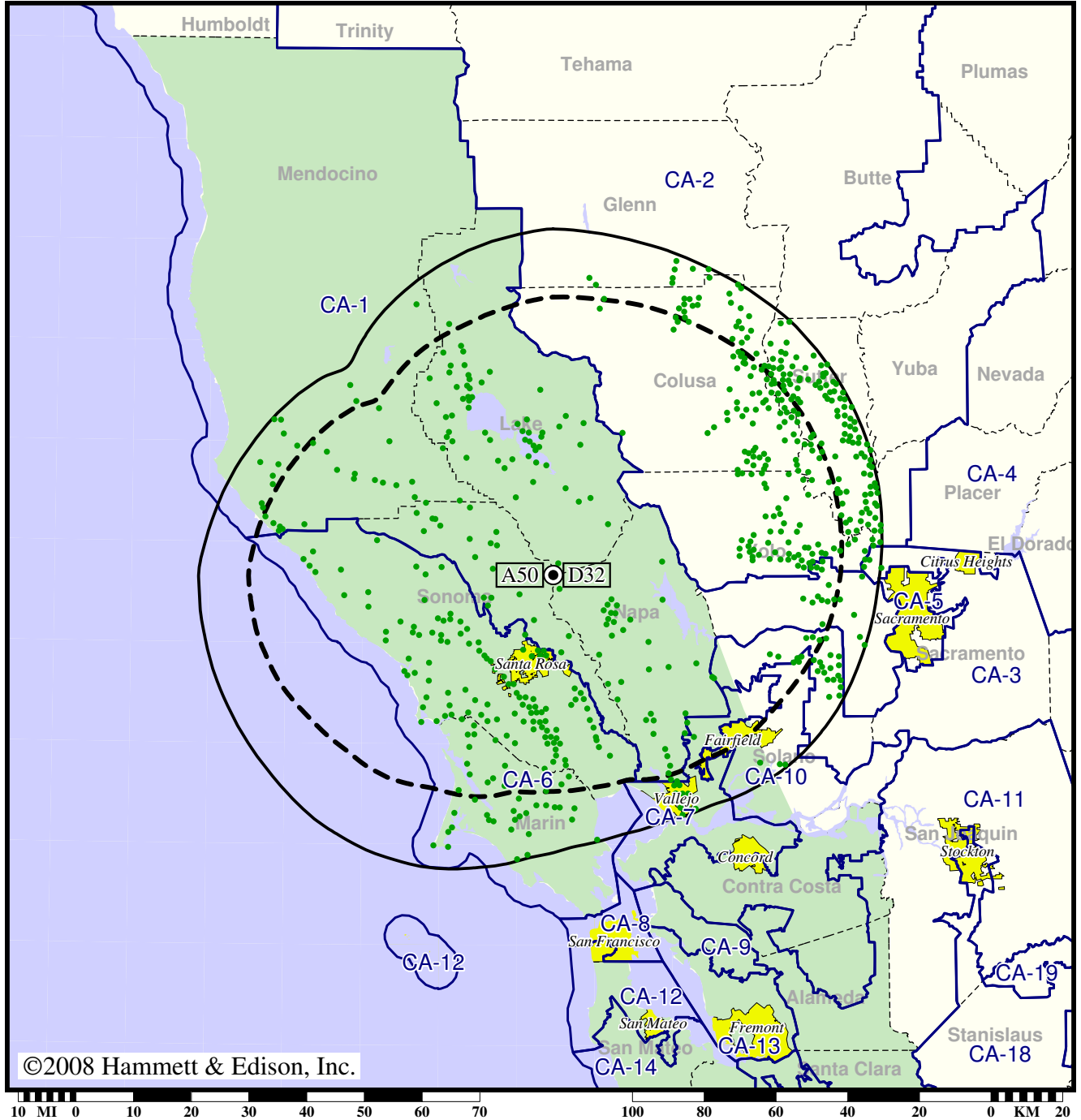
- Coverage gained after DTV transition
- (no symbol) No change in coverage
- ▲ Coverage lost after DTV transition

TV Station KFTY • Analog Channel 50, DTV Channel 32 • Santa Rosa, CA

Expected Change In Coverage: Granted Construction Permit

CP (solid): 19.9 kW ERP at 928 m HAAT  
vs. Analog (dashed): 302 kW ERP at 939 m HAAT

Market: San Francisco-Oakland-San Jose, CA



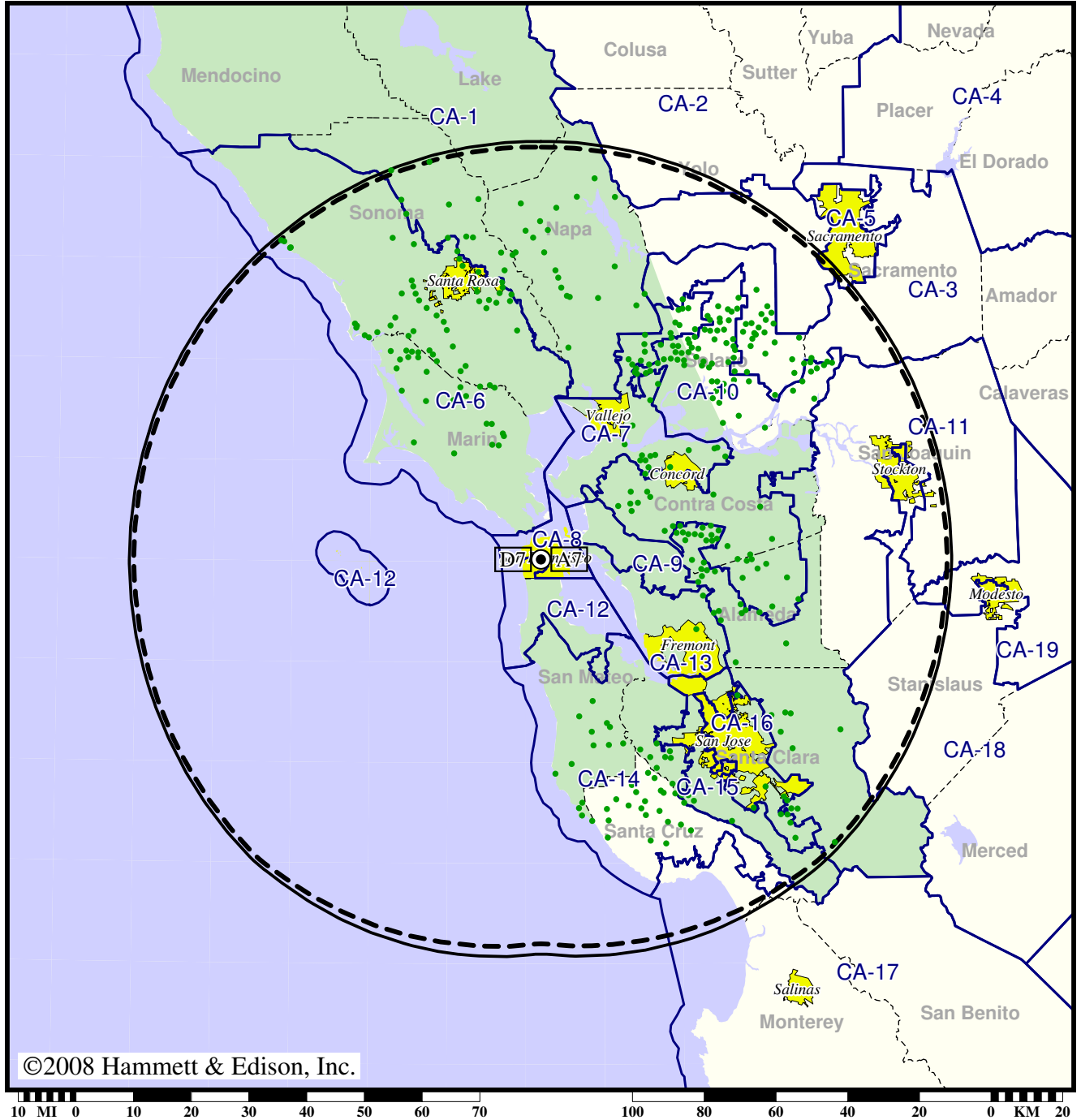
● Coverage gained after DTV transition  
(no symbol) No change in coverage

Station KGO-TV • Analog Channel 7, DTV Channel 7 • San Francisco, CA

Expected Change In Coverage: Granted Construction Permit

CP (solid): 24.0 kW ERP at 514 m HAAT, Network: ABC  
vs. Analog (dashed): 316 kW ERP at 509 m HAAT, Network: ABC

Market: San Francisco-Oakland-San Jose, CA



- Coverage gained after DTV transition
- (no symbol) No change in coverage

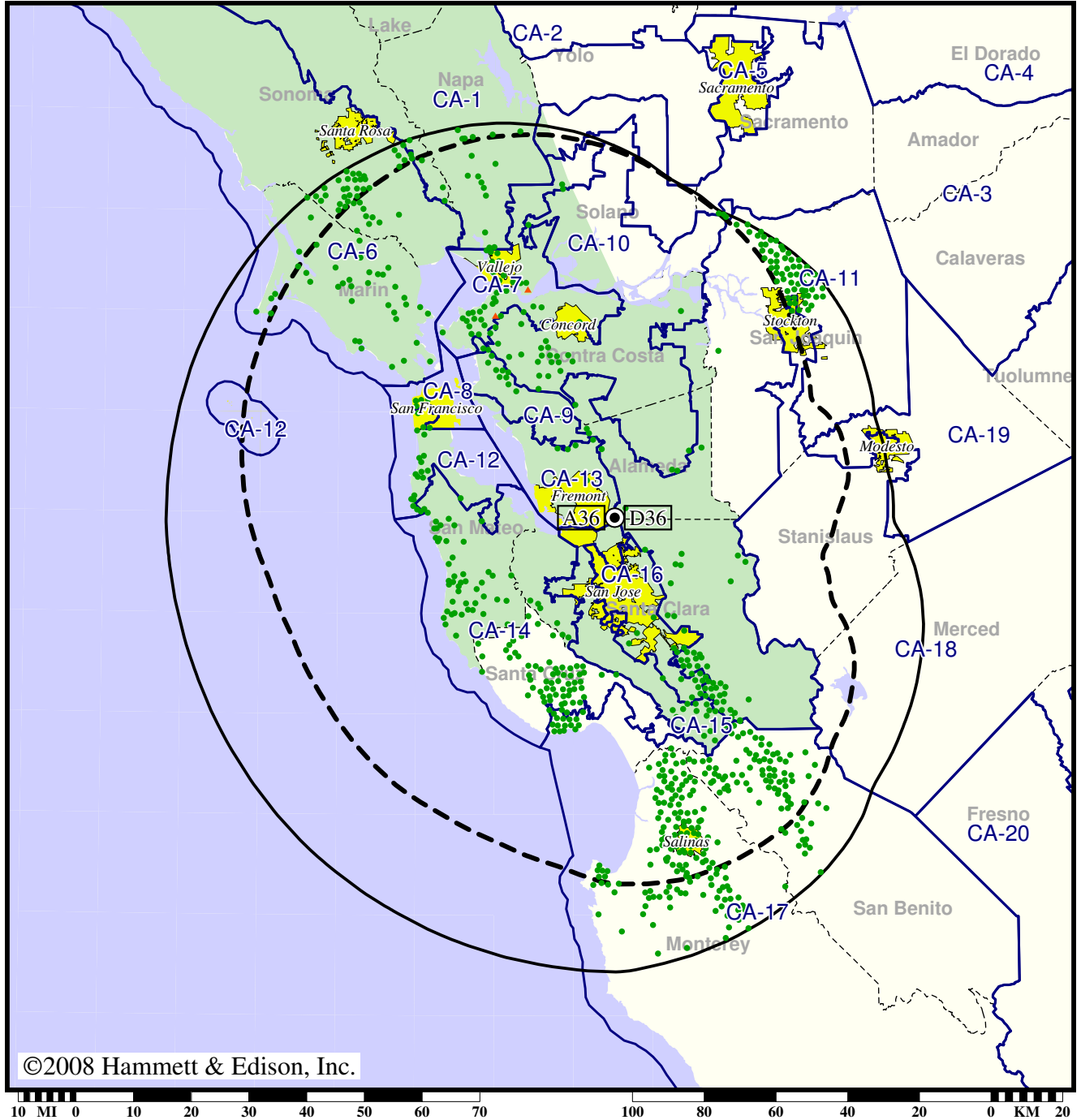


Station KICU-TV • Analog Channel 36, DTV Channel 36 • San Jose, CA

Expected Change In Coverage: Granted Construction Permit

CP (solid): 550 kW ERP at 686 m HAAT  
vs. Analog (dashed): 4070 kW ERP at 686 m HAAT

Market: San Francisco-Oakland-San Jose, CA



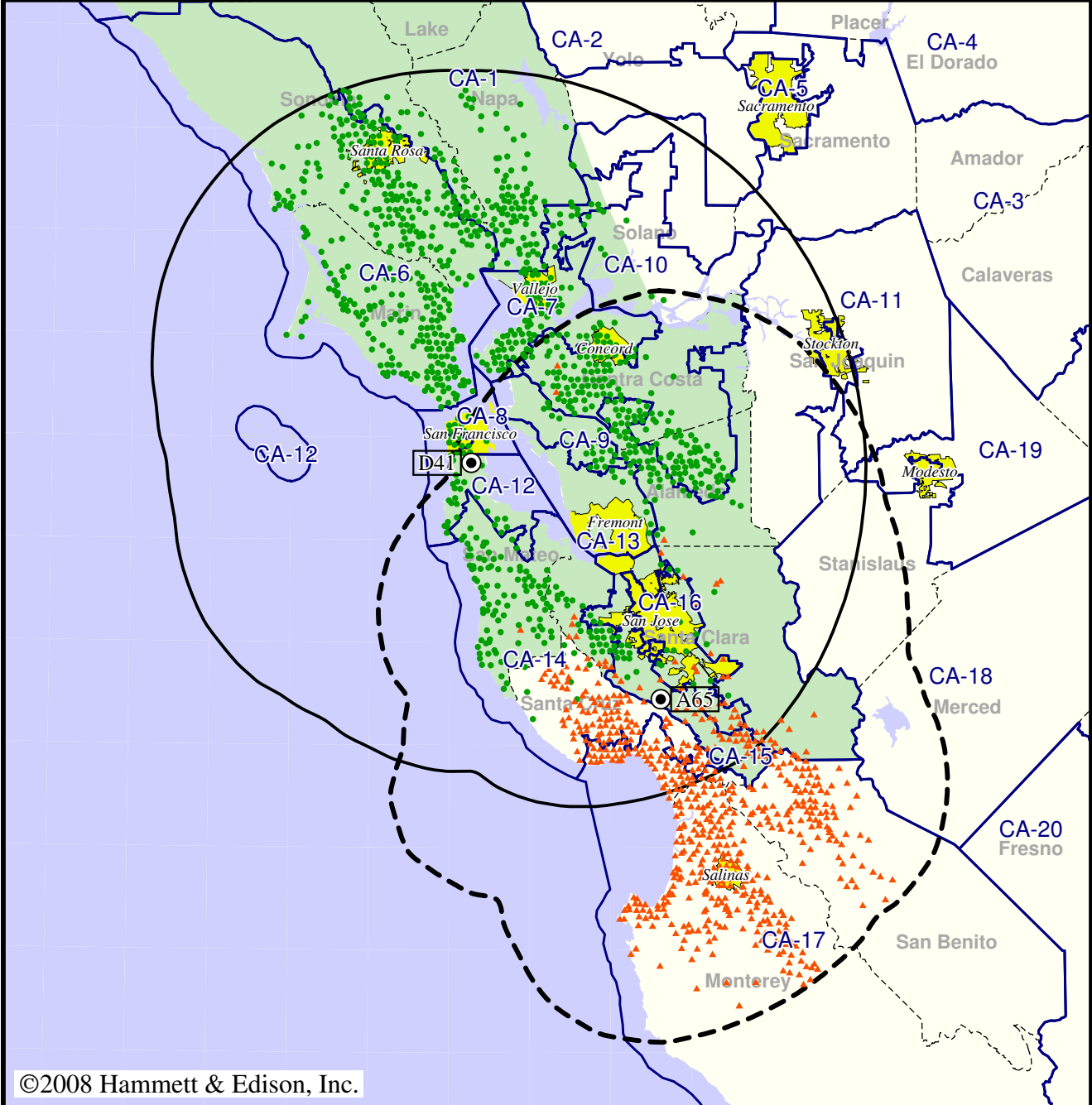
- Coverage gained after DTV transition
- (no symbol) No change in coverage
- ▲ Coverage lost after DTV transition

TV Station KKPX • Analog Channel 65, DTV Channel 41 • San Jose, CA

Expected Change In Coverage: Licensed Operation

Licensed (solid): 1000 kW ERP at 418 m HAAT  
vs. Analog (dashed): 3090 kW ERP at 812 m HAAT

Market: San Francisco-Oakland-San Jose, CA



©2008 Hammett & Edison, Inc.

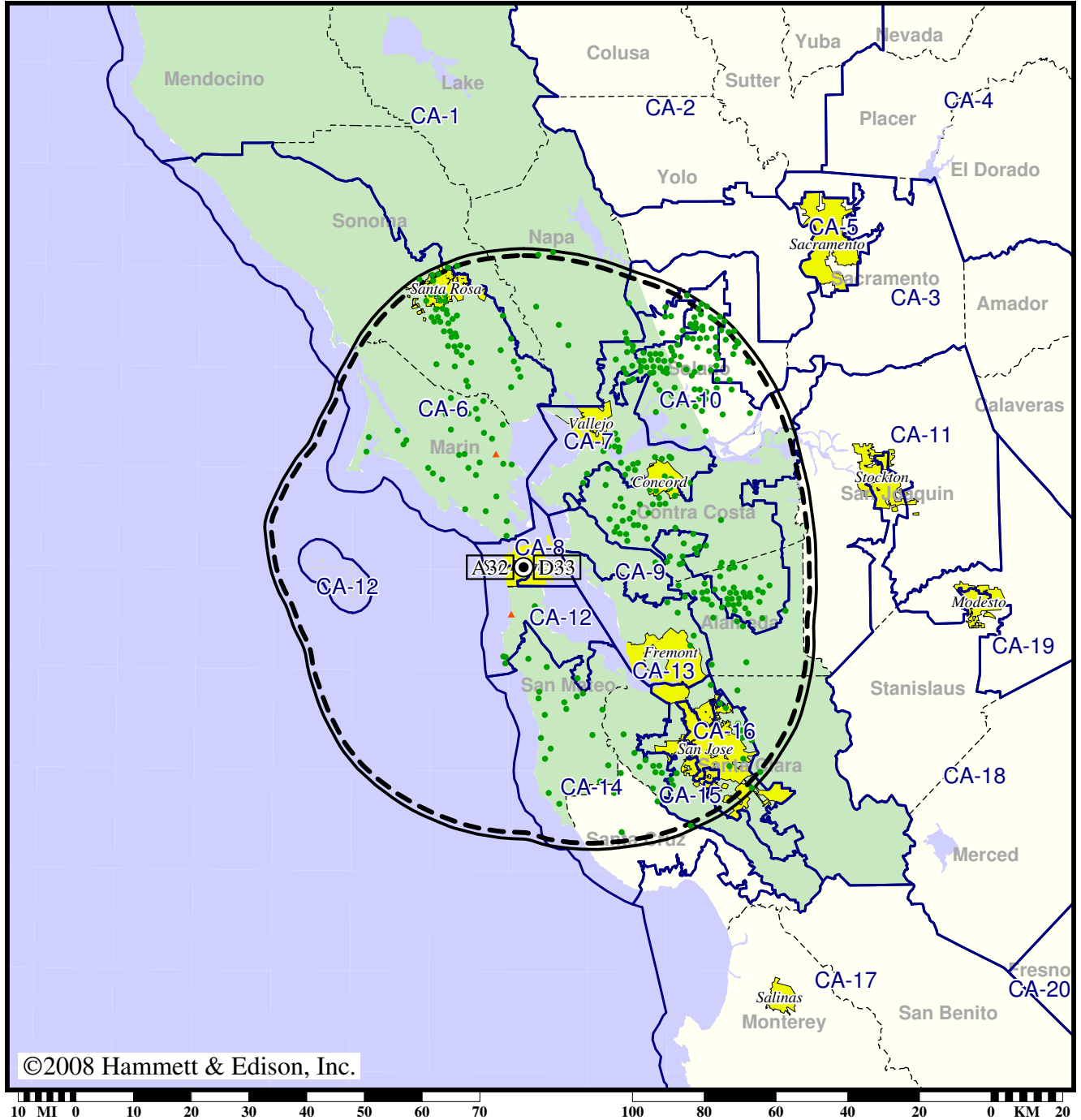
- Coverage gained after DTV transition
- (no symbol) No change in coverage
- ▲ Coverage lost after DTV transition

Station KMTP-TV • Analog Channel 32, DTV Channel 33 • San Francisco, CA

Expected Change In Coverage: Post-Transition Appendix B Facility

Appendix B (solid): 50.0 kW ERP at 491 m HAAT  
vs. Analog (dashed): 1320 kW ERP at 491 m HAAT

Market: San Francisco-Oakland-San Jose, CA



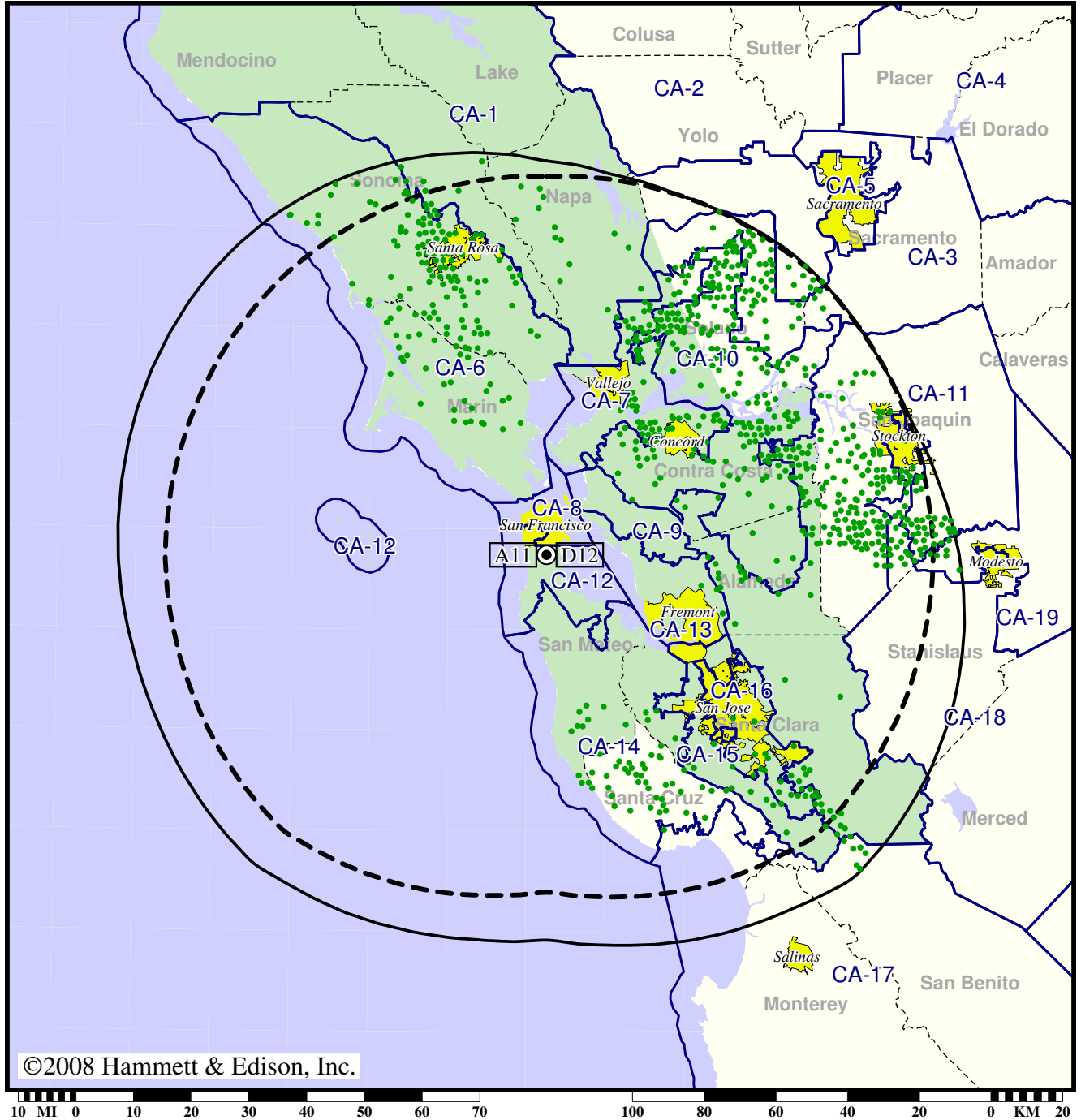
- Coverage gained after DTV transition
- (no symbol) No change in coverage
- ▲ Coverage lost after DTV transition

TV Station KNTV • Analog Channel 11, DTV Channel 12 • San Jose, CA

Expected Change In Coverage: Licensed Operation

Licensed (solid): 103 kW ERP at 377 m HAAT, Network: NBC  
vs. Analog (dashed): 316 kW ERP at 392 m HAAT, Network: NBC

Market: San Francisco-Oakland-San Jose, CA



©2008 Hammett & Edison, Inc.

- Coverage gained after DTV transition
- (no symbol) No change in coverage

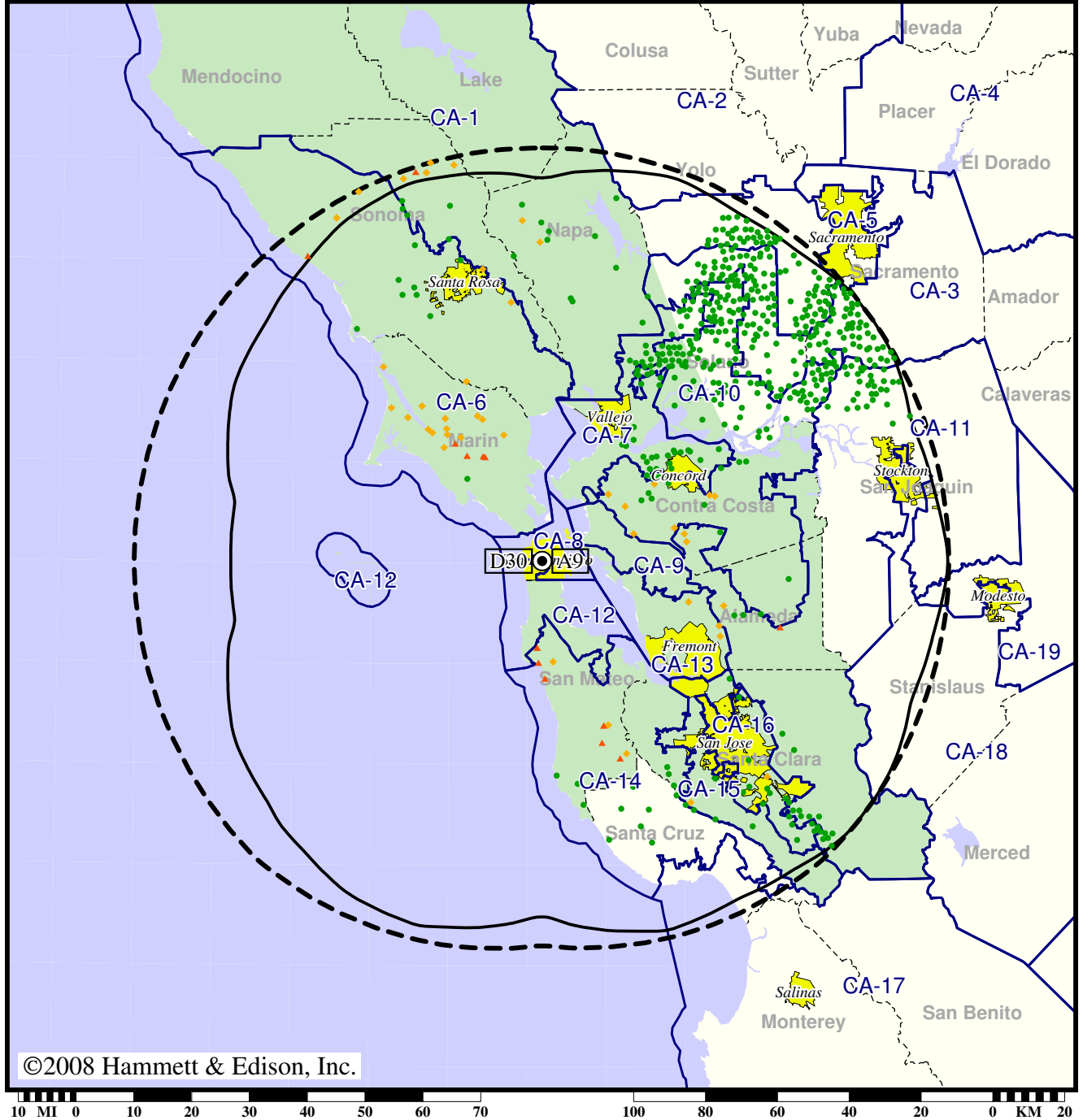


TV Station KQED • Analog Channel 9, DTV Channel 30 • San Francisco, CA

Expected Change In Coverage: Granted Construction Permit

CP (solid): 710 kW ERP at 512 m HAAT, Network: PBS  
vs. Analog (dashed): 316 kW ERP at 509 m HAAT, Network: PBS

Market: San Francisco-Oakland-San Jose, CA



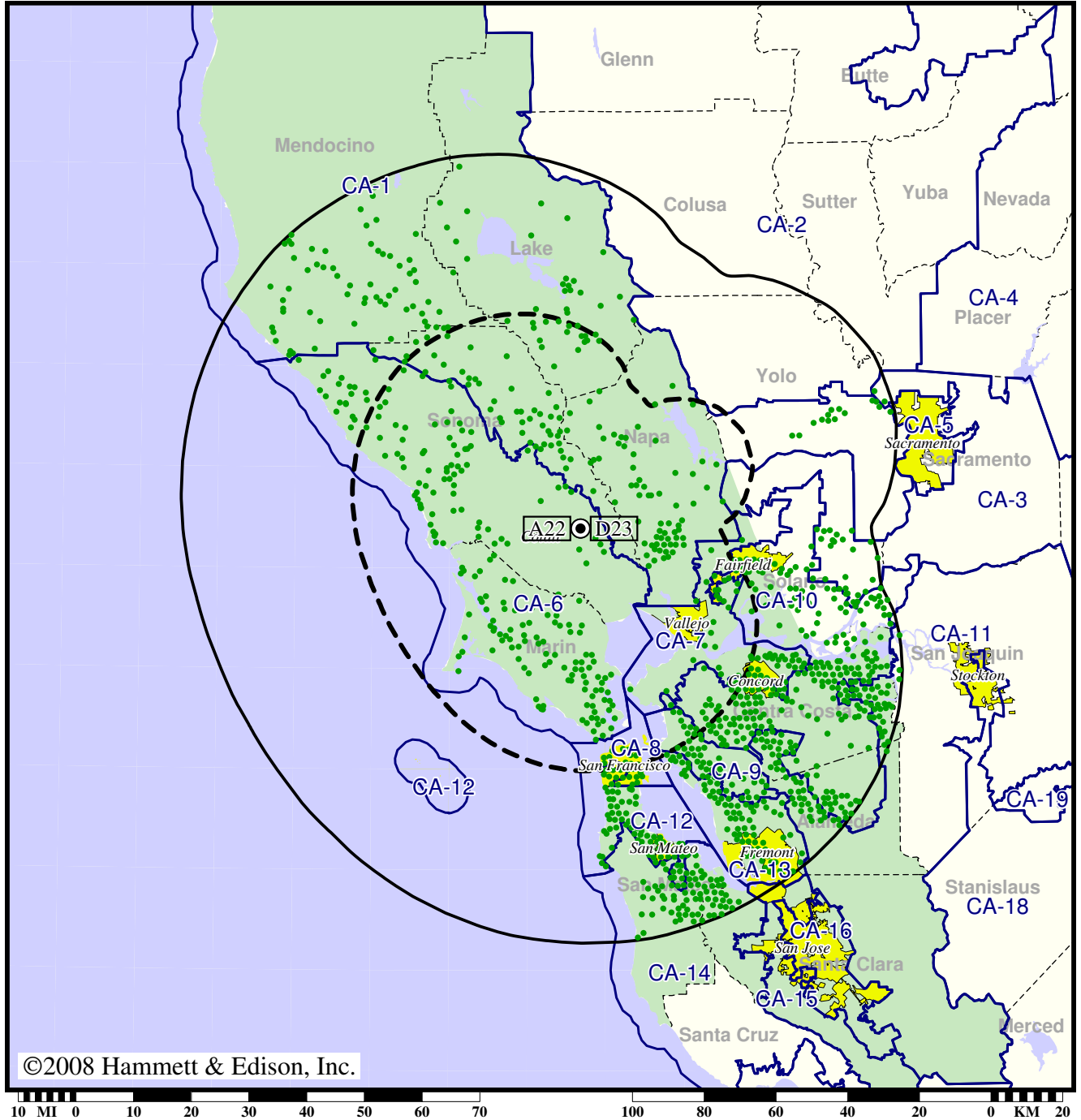
- Coverage gained after DTV transition
- (no symbol) No change in coverage
- ◆ Coverage lost but still served by same network
- ▲ Coverage lost and no other service by same network

TV Station KRCB • Analog Channel 22, DTV Channel 23 • Cotati, CA

Expected Change In Coverage: Granted Construction Permit

CP (solid): 299 kW ERP at 630 m HAAT, Network: PBS  
vs. Analog (dashed): 60.0 kW ERP at 630 m HAAT, Network: PBS

Market: San Francisco-Oakland-San Jose, CA



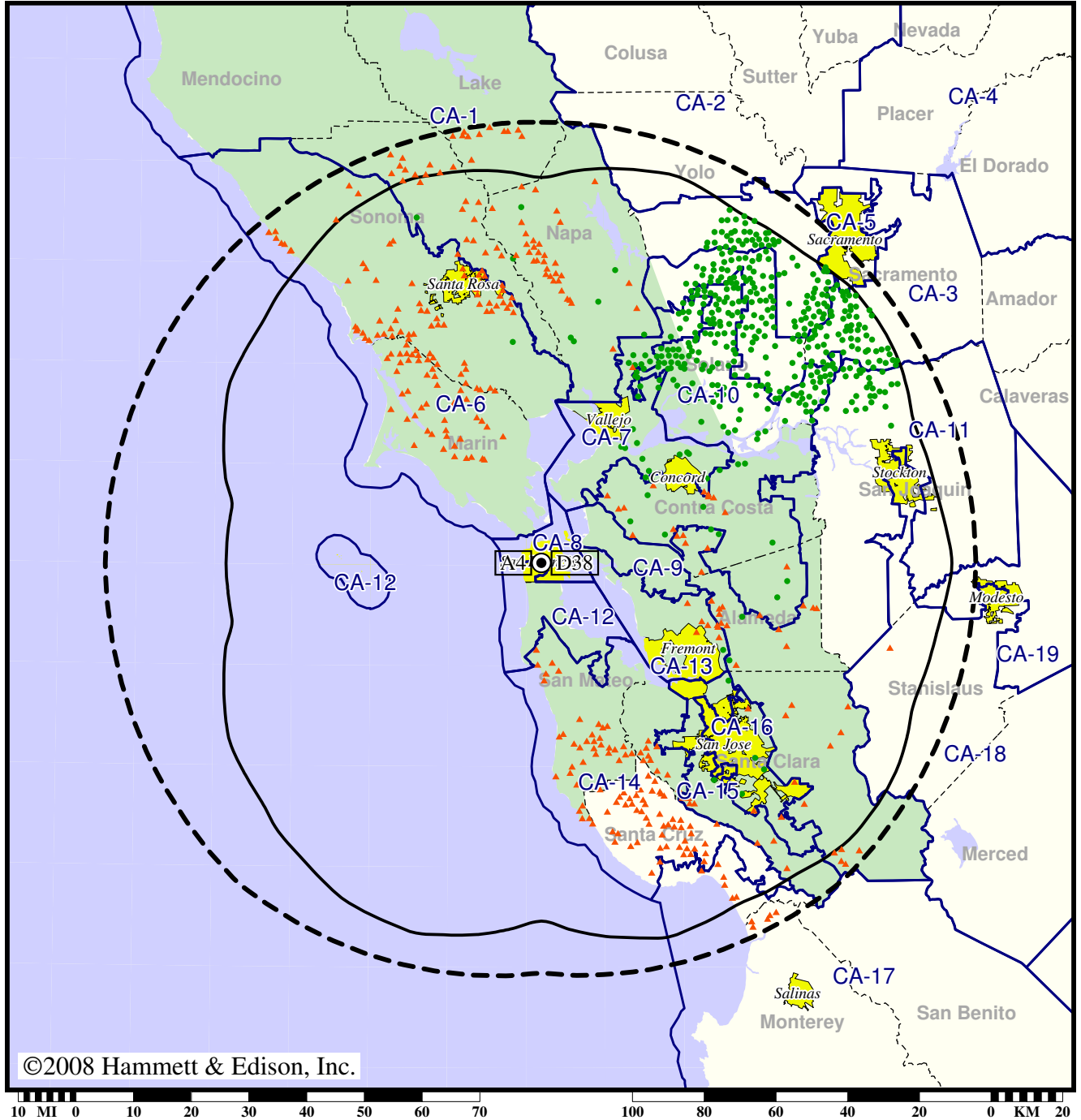
- Coverage gained after DTV transition
- (no symbol) No change in coverage

Station KRON-TV • Analog Channel 4, DTV Channel 38 • San Francisco, CA

Expected Change In Coverage: Granted Construction Permit

CP (solid): 1000 kW ERP at 512 m HAAT  
vs. Analog (dashed): 100 kW ERP at 506 m HAAT

Market: San Francisco-Oakland-San Jose, CA



©2008 Hammett & Edison, Inc.

- Coverage gained after DTV transition
- (no symbol) No change in coverage
- ▲ Coverage lost after DTV transition

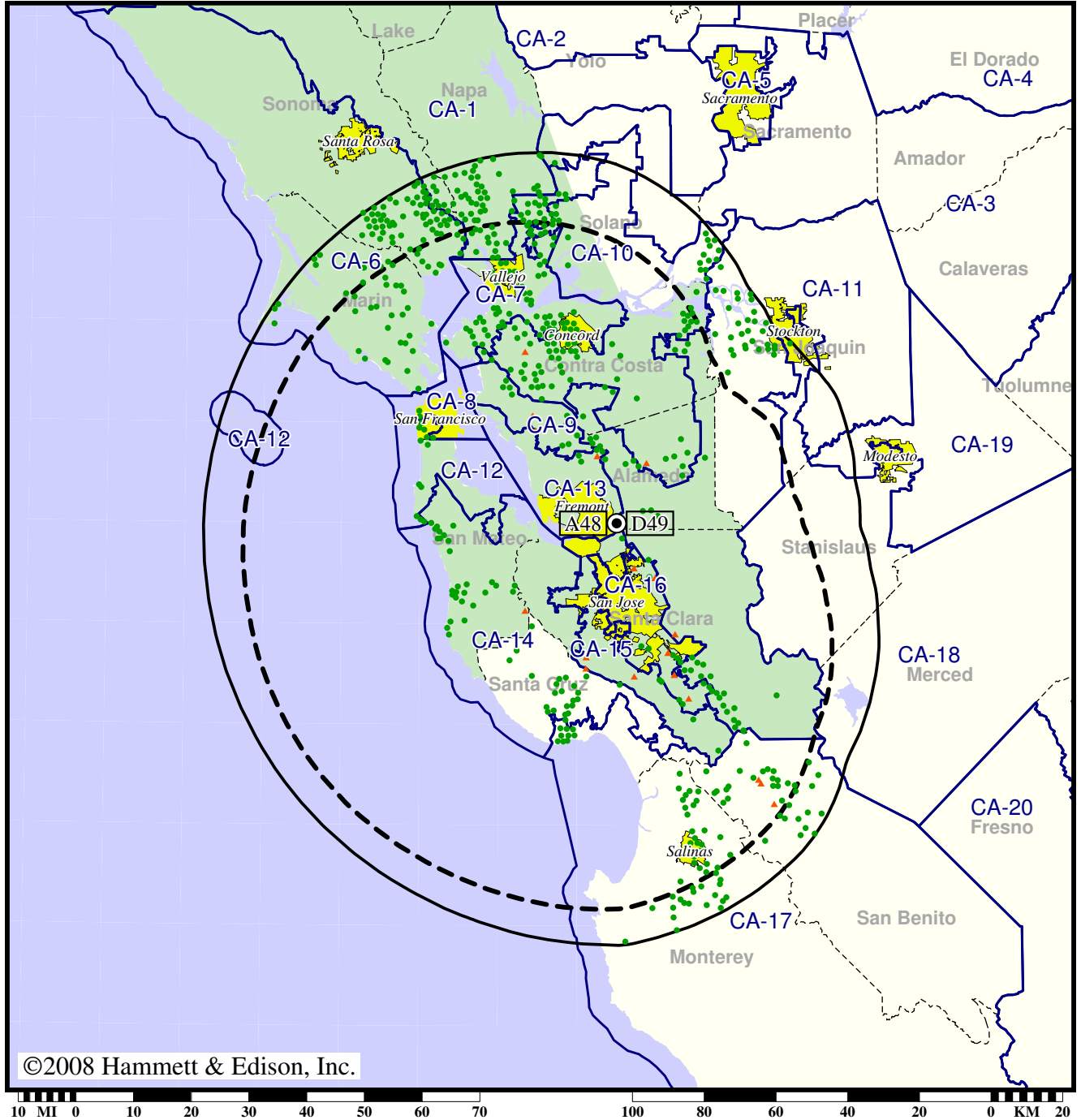


TV Station KSTS • Analog Channel 48, DTV Channel 49 • San Jose, CA

Expected Change In Coverage: Licensed Operation

Licensed (solid): 257 kW ERP at 688 m HAAT  
vs. Analog (dashed): 2510 kW ERP at 688 m HAAT

Market: San Francisco-Oakland-San Jose, CA



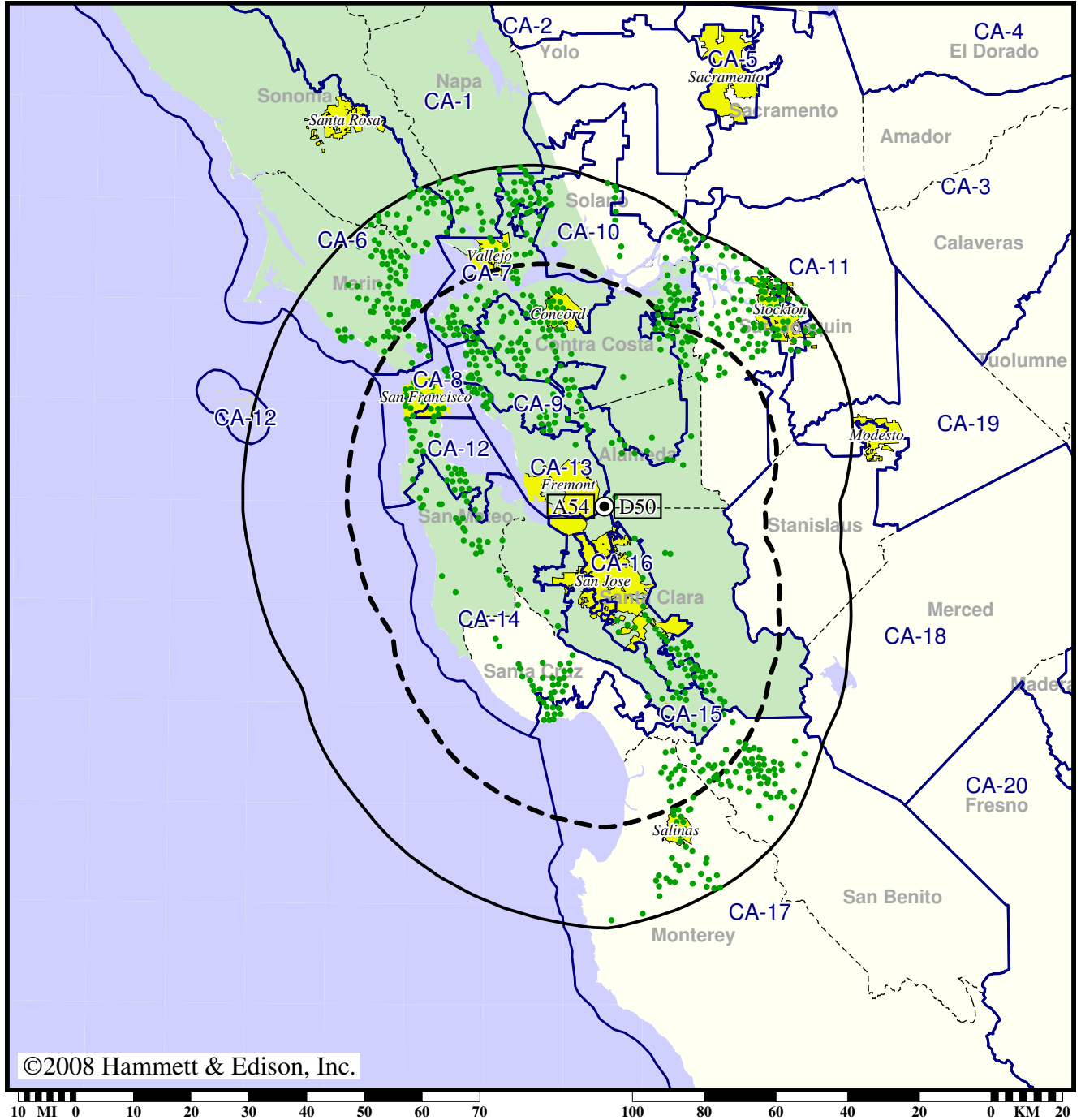
- Coverage gained after DTV transition
- (no symbol) No change in coverage
- ▲ Coverage lost after DTV transition

TV Station KTEH • Analog Channel 54, DTV Channel 50 • San Jose, CA

Expected Change In Coverage: Licensed Operation

Licensed (solid): 290 kW ERP at 662 m HAAT, Network: PBS  
vs. Analog (dashed): 661 kW ERP at 662 m HAAT, Network: PBS

Market: San Francisco-Oakland-San Jose, CA



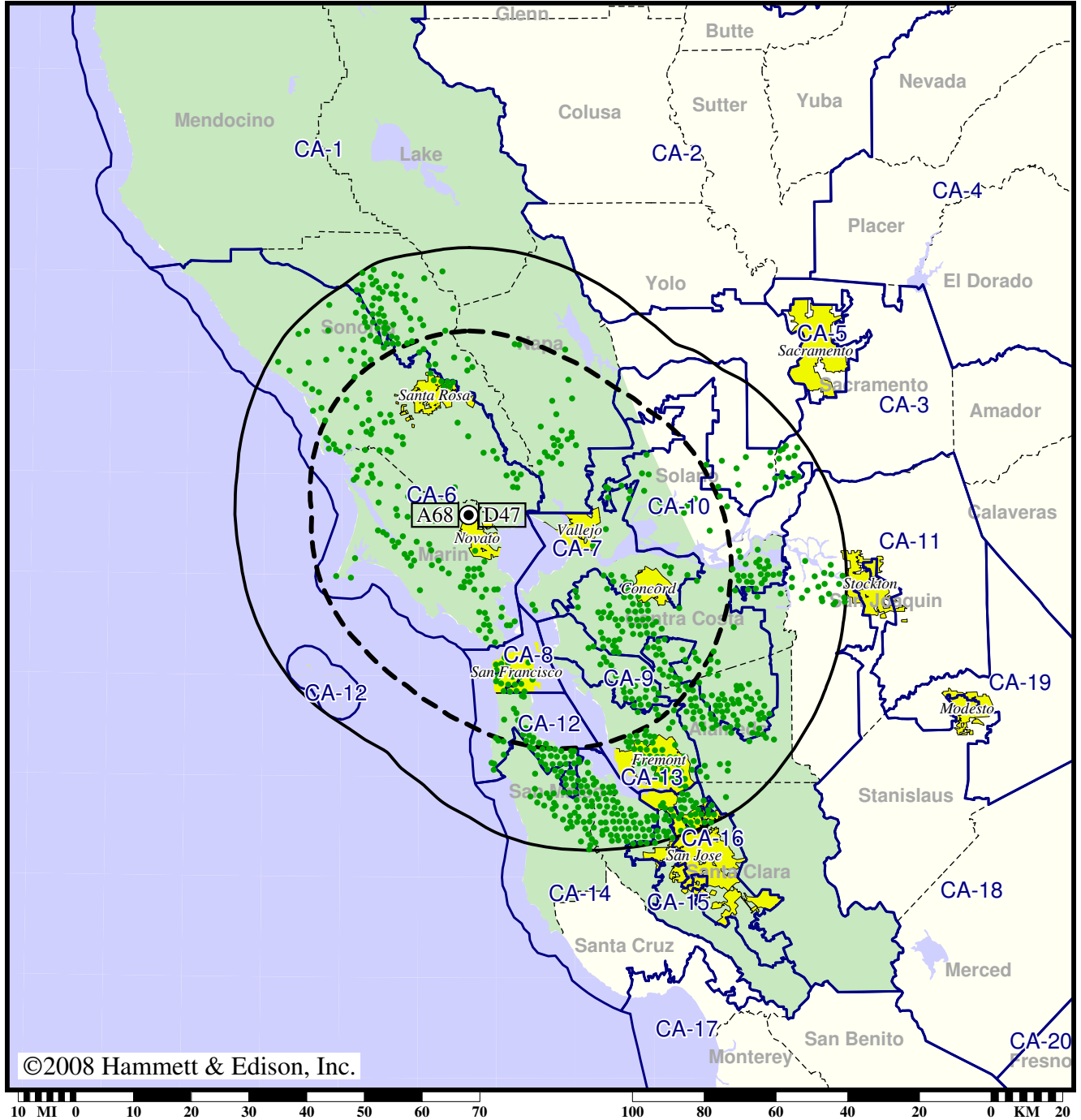
- Coverage gained after DTV transition
- (no symbol) No change in coverage
- ◆ Coverage lost but still served by same network

Station KTLN-TV • Analog Channel 68, DTV Channel 47 • Novato, CA

Expected Change In Coverage: Post-Transition Appendix B Facility

Appendix B (solid): 1000 kW ERP at 402 m HAAT  
vs. Analog (dashed): 1100 kW ERP at 402 m HAAT

Market: San Francisco-Oakland-San Jose, CA



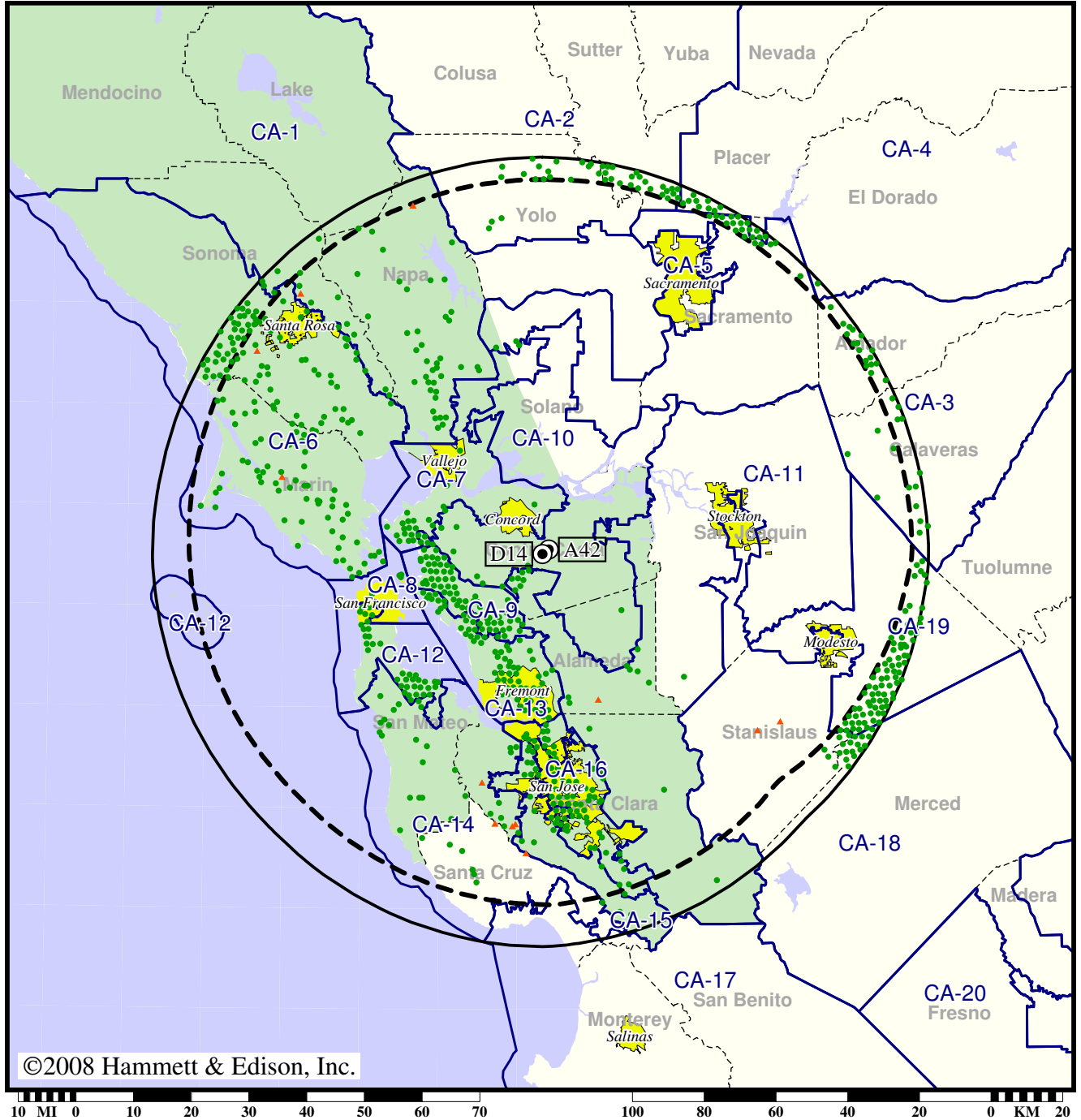
● Coverage gained after DTV transition  
(no symbol) No change in coverage

Station KTNC-TV • Analog Channel 42, DTV Channel 14 • Concord, CA

Expected Change In Coverage: Granted Construction Permit

CP (solid): 40.0 kW ERP at 962 m HAAT  
vs. Analog (dashed): 1290 kW ERP at 856 m HAAT

Market: San Francisco-Oakland-San Jose, CA



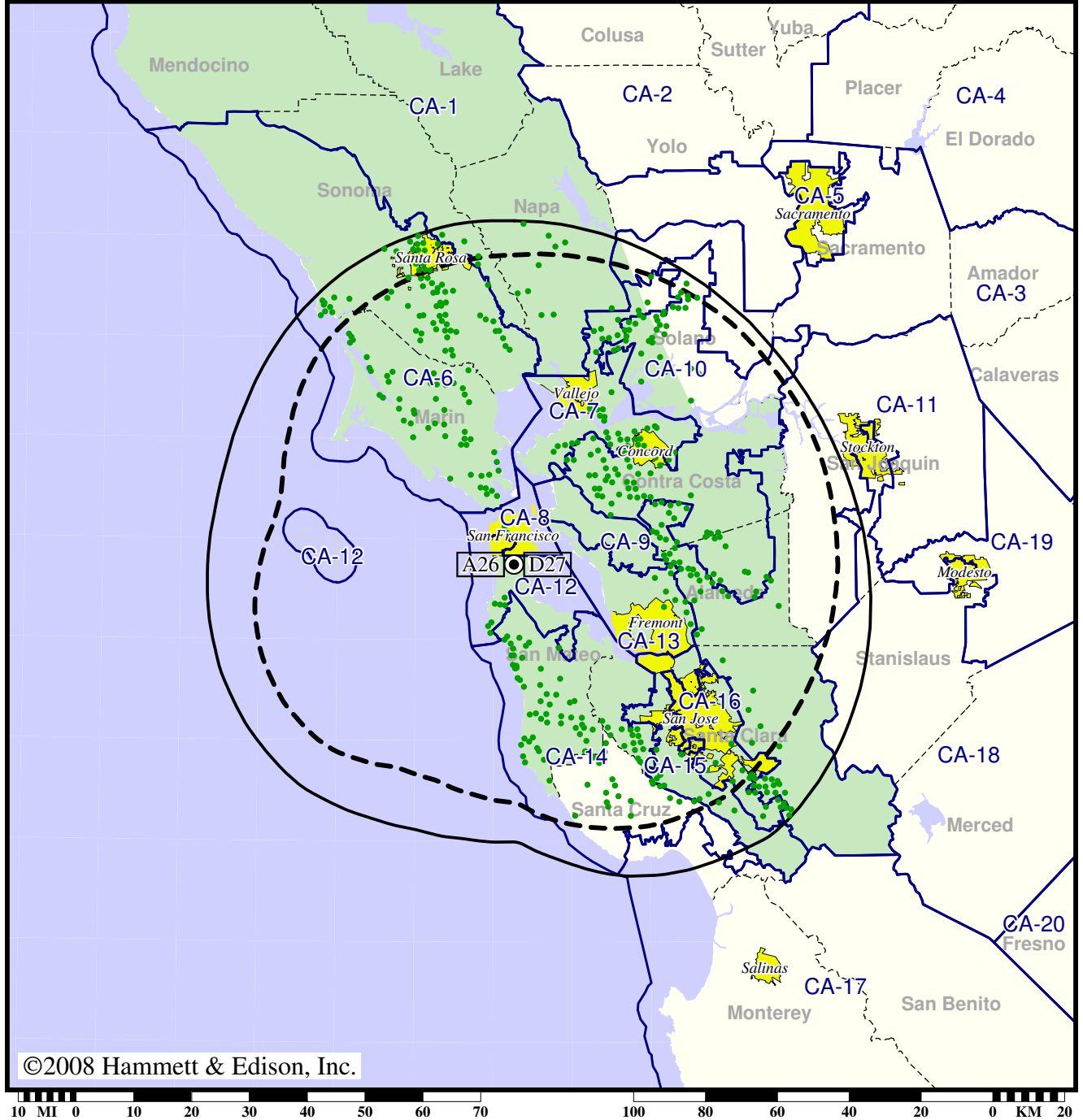
- Coverage gained after DTV transition
- (no symbol) No change in coverage
- ▲ Coverage lost after DTV transition

TV Station KTSF • Analog Channel 26, DTV Channel 27 • San Francisco, CA

Expected Change In Coverage: Licensed Operation

Licensed (solid): 500 kW ERP at 403 m HAAT  
vs. Analog (dashed): 2510 kW ERP at 421 m HAAT

Market: San Francisco-Oakland-San Jose, CA



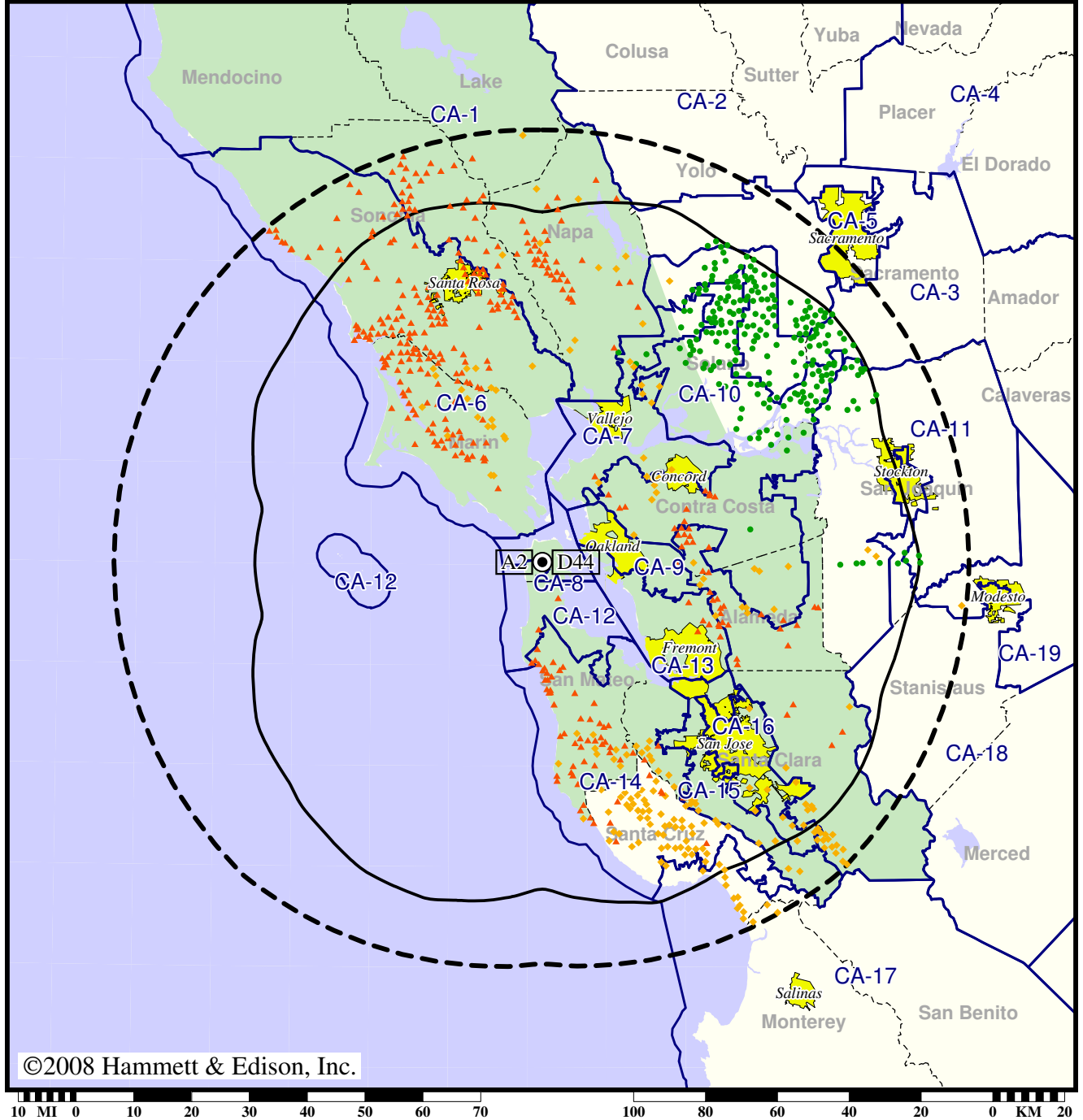
- Coverage gained after DTV transition
- (no symbol) No change in coverage

TV Station KTVU • Analog Channel 2, DTV Channel 44 • Oakland, CA

Expected Change In Coverage: Granted Construction Permit

CP (solid): 400 kW ERP at 512 m HAAT, Network: Fox  
vs. Analog (dashed): 100 kW ERP at 479 m HAAT, Network: Fox

Market: San Francisco-Oakland-San Jose, CA



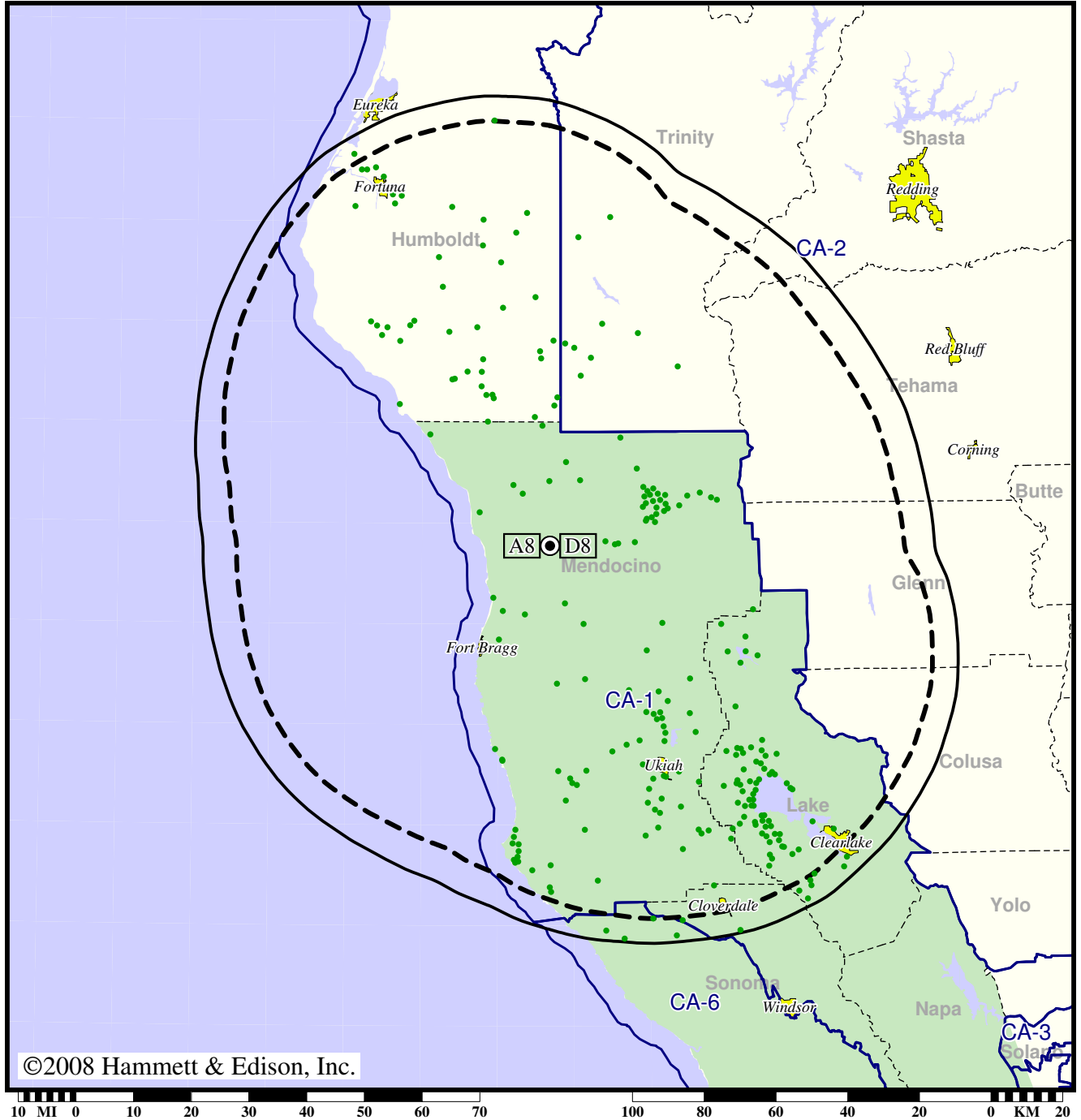
- Coverage gained after DTV transition
- (no symbol) No change in coverage
- ◆ Coverage lost but still served by same network
- ▲ Coverage lost and no other service by same network

Station KUNO-TV • Analog Channel 8, DTV Channel 8 • Fort Bragg, CA

Expected Change In Coverage: Granted Construction Permit

CP (solid): 26.0 kW ERP at 744 m HAAT  
vs. Analog (dashed): 224 kW ERP at 744 m HAAT

Market: San Francisco-Oakland-San Jose, CA



- Coverage gained after DTV transition
- (no symbol) No change in coverage