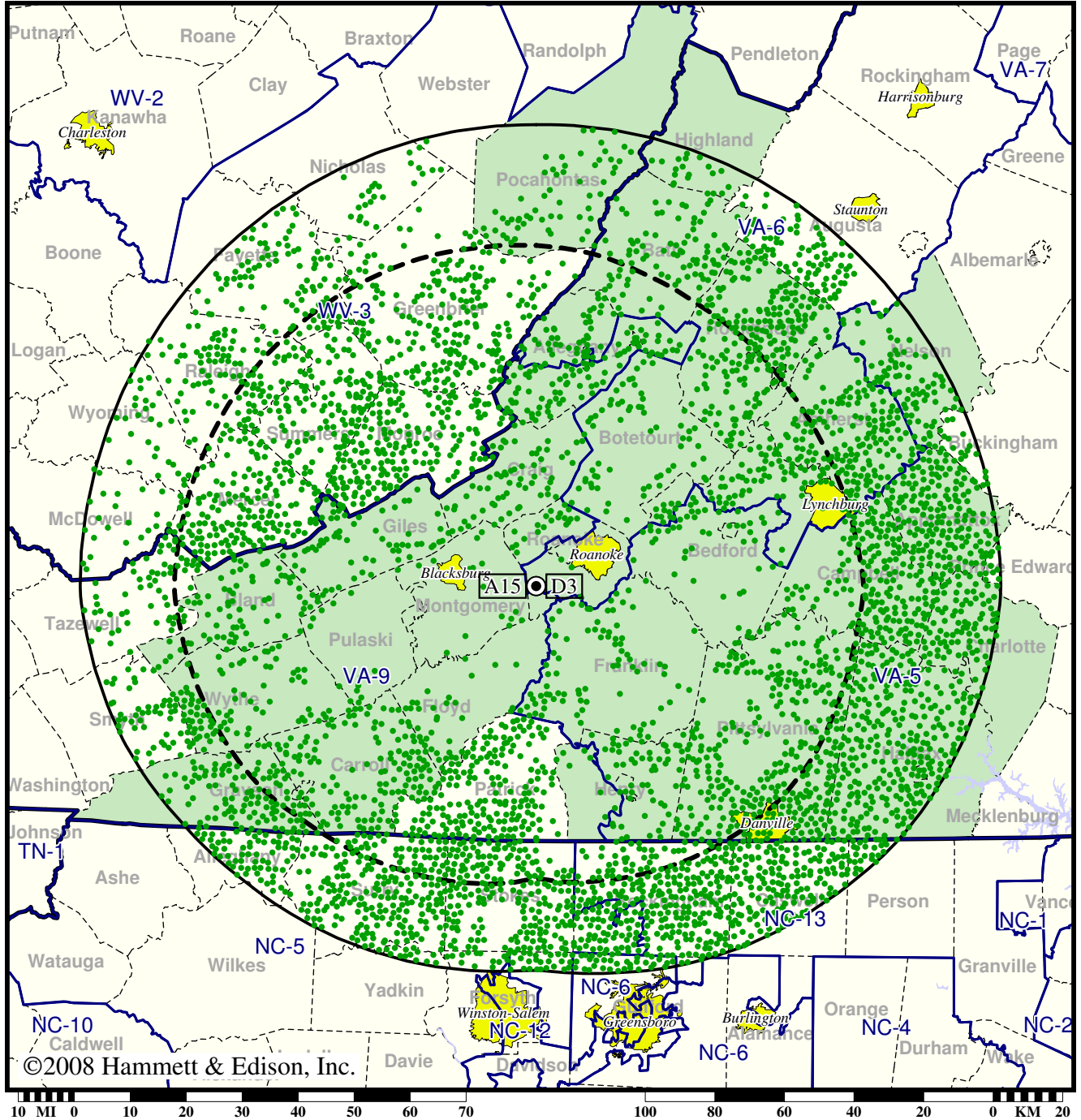


Station WBRA-TV • Analog Channel 15, DTV Channel 3 • Roanoke, VA

Expected Change In Coverage: Granted Construction Permit

CP (solid): 9.80 kW ERP at 614 m HAAT, Network: PBS
vs. Analog (dashed): 1820 kW ERP at 634 m HAAT, Network: PBS

Market: Roanoke-Lynchburg, VA



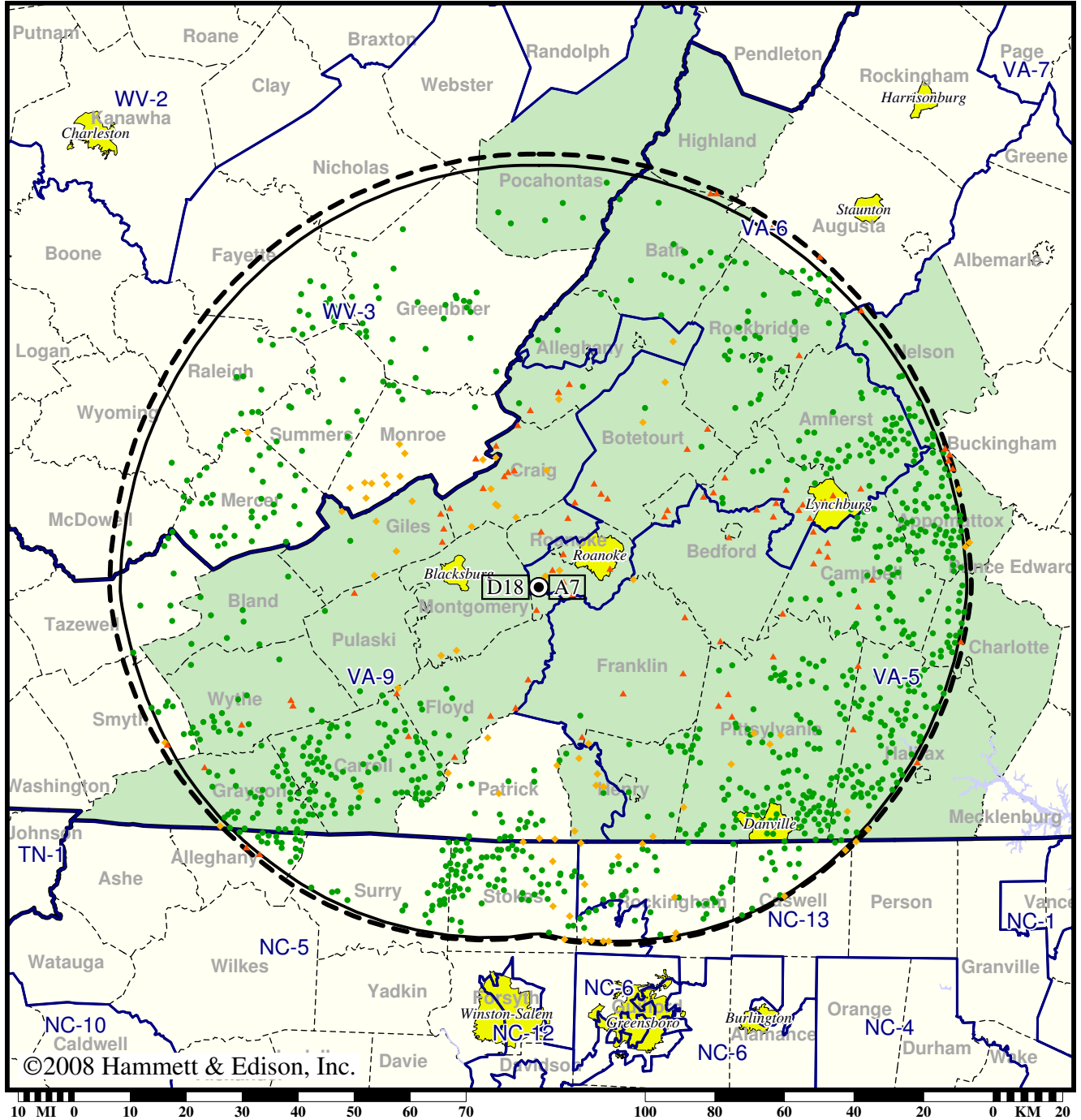
- Coverage gained after DTV transition
- (no symbol) No change in coverage

TV Station WDBJ • Analog Channel 7, DTV Channel 18 • Roanoke, VA

Expected Change In Coverage: Licensed Operation

Licensed (solid): 460 kW ERP at 606 m HAAT, Network: CBS
 vs. Analog (dashed): 316 kW ERP at 610 m HAAT, Network: CBS

Market: Roanoke-Lynchburg, VA



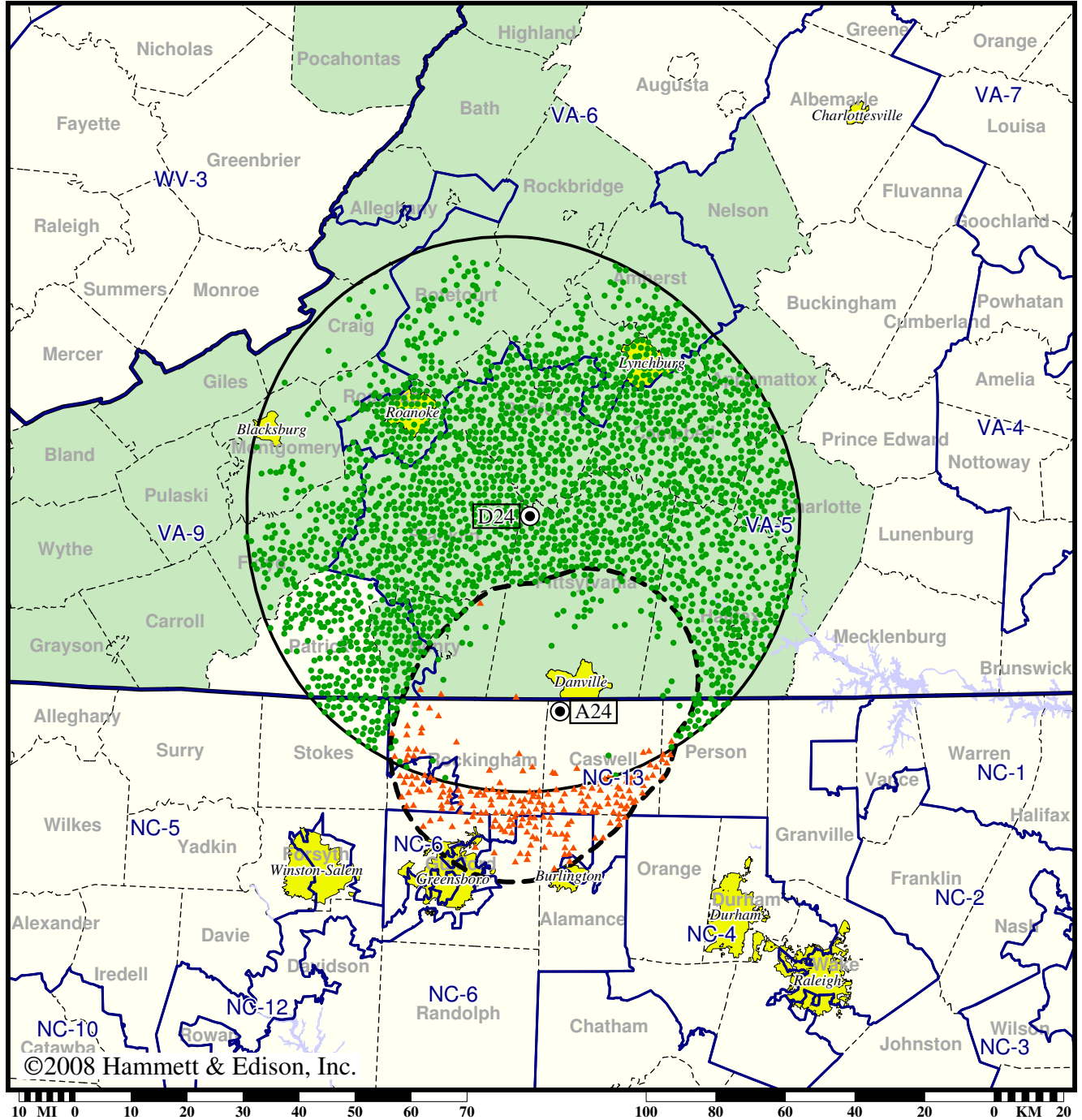
- Coverage gained after DTV transition
- (no symbol) No change in coverage
- ◆ Coverage lost but still served by same network
- ▲ Coverage lost and no other service by same network

Station WDRL-TV • Analog Channel 24, DTV Channel 24 • Danville, VA

Expected Change In Coverage: Granted Construction Permit

CP (solid): 63.0 kW ERP at 378 m HAAT
vs. Analog (dashed): 1150 kW ERP at 107 m HAAT

Market: Roanoke-Lynchburg, VA



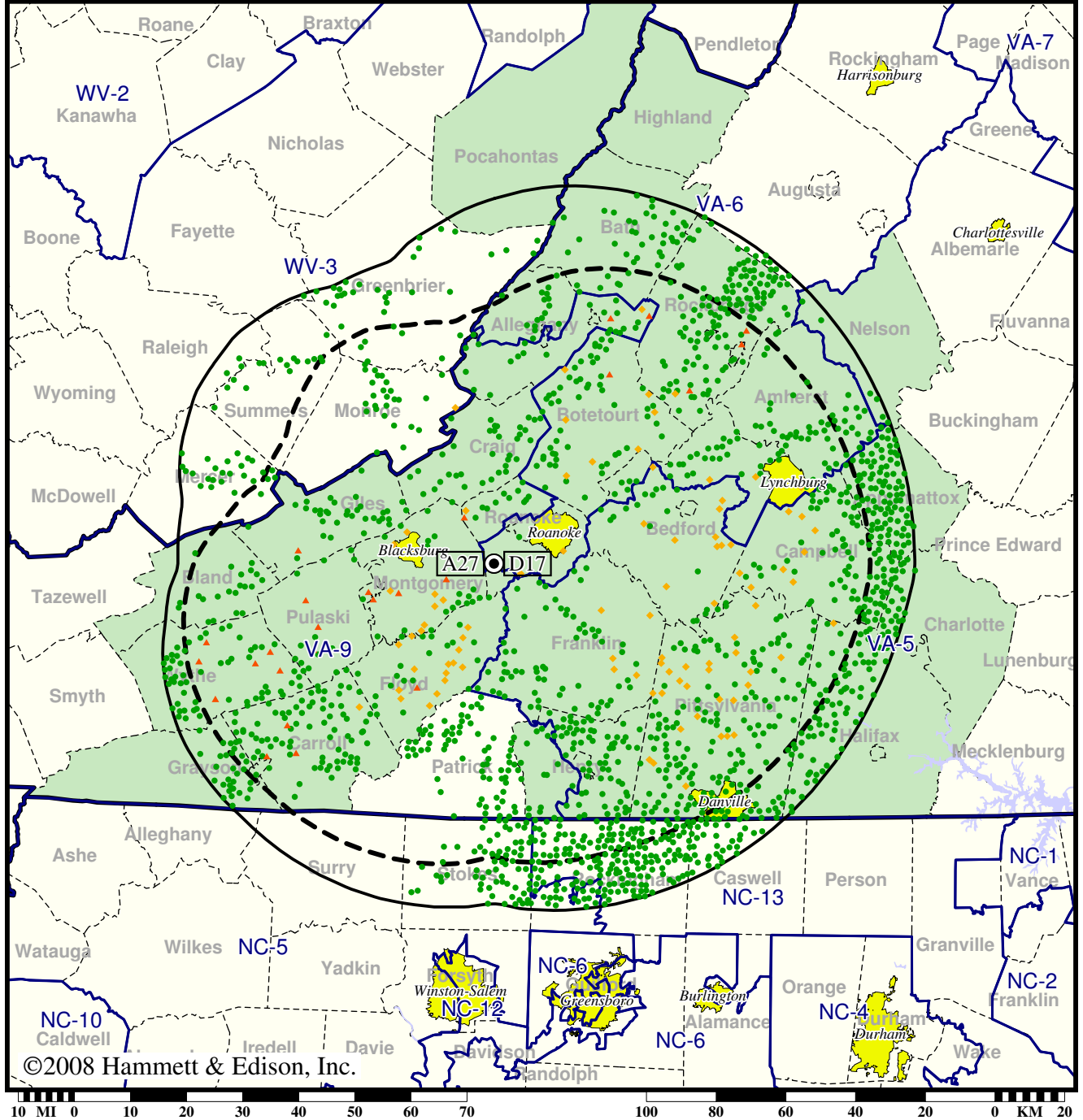
- Coverage gained after DTV transition
- (no symbol) No change in coverage
- ▲ Coverage lost after DTV transition

Station WFXR-TV • Analog Channel 27, DTV Channel 17 • Roanoke, VA

Expected Change In Coverage: Post-Transition Appendix B Facility

Appendix B (solid): 400 kW ERP at 594 m HAAT, Network: Fox
vs. Analog (dashed): 2690 kW ERP at 607 m HAAT, Network: Fox

Market: Roanoke-Lynchburg, VA

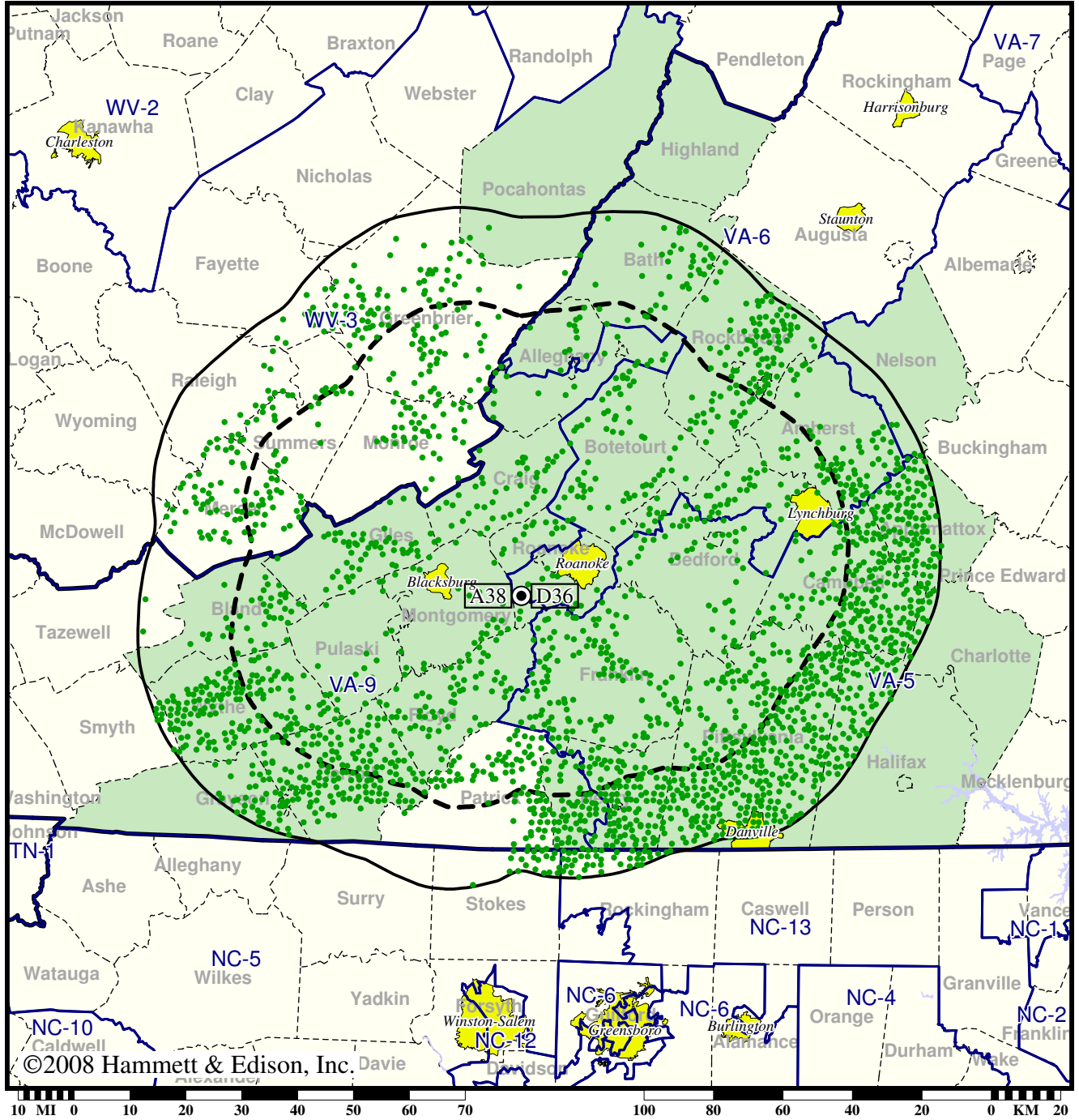


TV Station WPXR • Analog Channel 38, DTV Channel 36 • Roanoke, VA

Expected Change In Coverage: Licensed Operation

Licensed (solid): 700 kW ERP at 623 m HAAT
vs. Analog (dashed): 1350 kW ERP at 623 m HAAT

Market: Roanoke-Lynchburg, VA



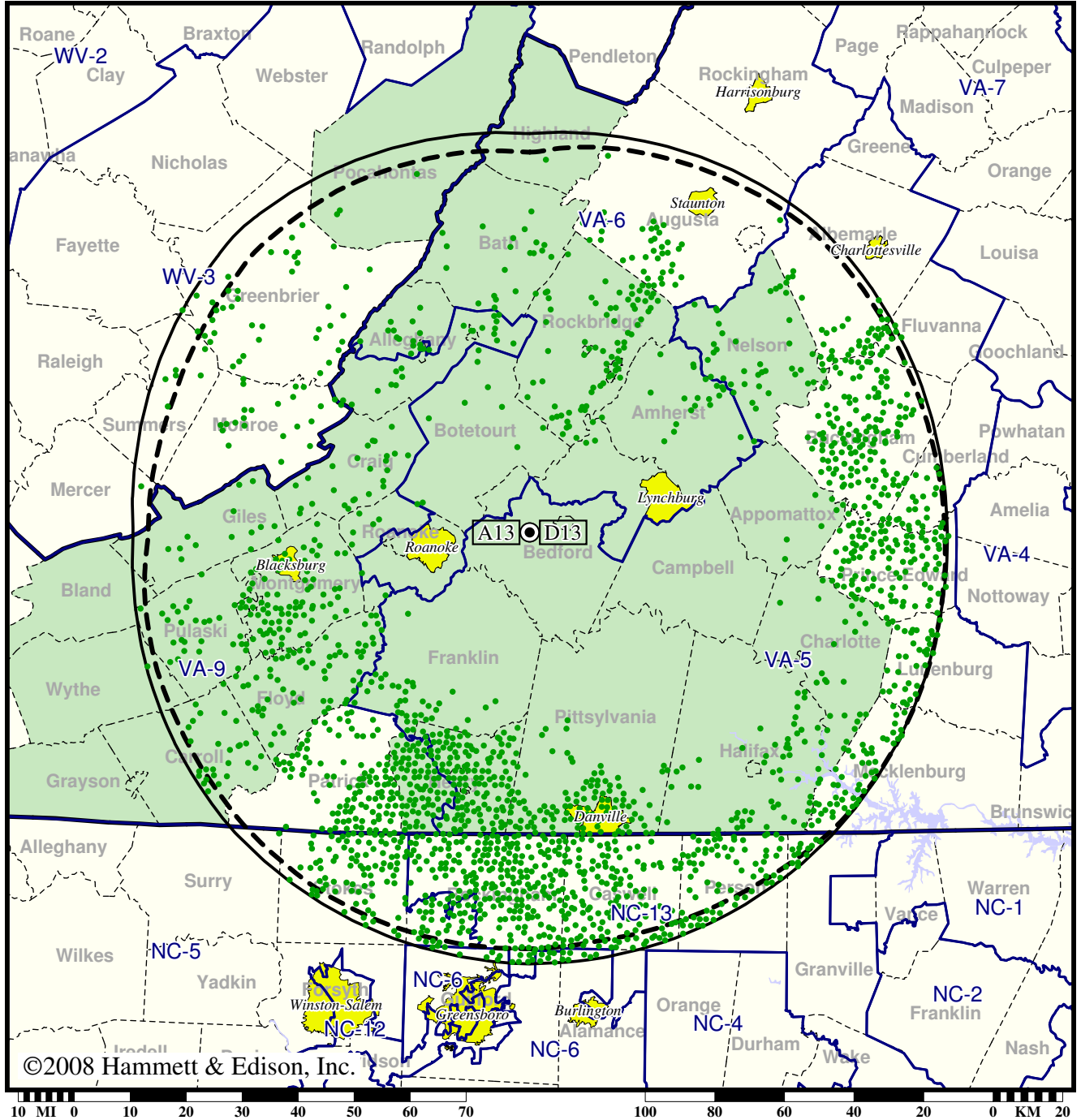
- Coverage gained after DTV transition
- (no symbol) No change in coverage

Station WSET-TV • Analog Channel 13, DTV Channel 13 • Lynchburg, VA

Expected Change In Coverage: Granted Construction Permit

CP (solid): 22.0 kW ERP at 625 m HAAT, Network: ABC
vs. Analog (dashed): 302 kW ERP at 625 m HAAT, Network: ABC

Market: Roanoke-Lynchburg, VA



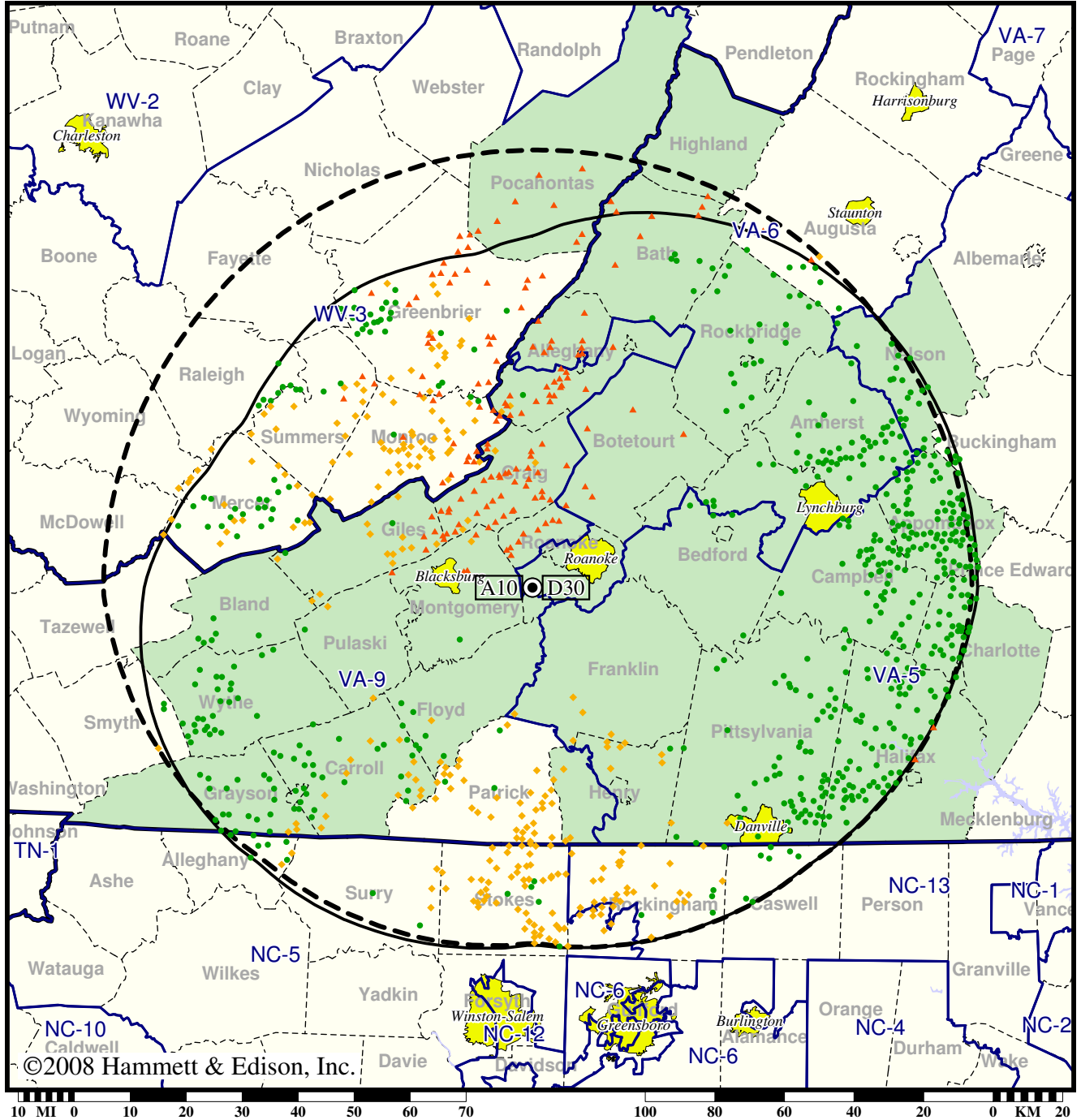
- Coverage gained after DTV transition
- (no symbol) No change in coverage

Station WSLs-TV • Analog Channel 10, DTV Channel 30 • Roanoke, VA

Expected Change In Coverage: Granted Construction Permit

CP (solid): 1000 kW ERP at 592 m HAAT, Network: NBC
vs. Analog (dashed): 316 kW ERP at 610 m HAAT, Network: NBC

Market: Roanoke-Lynchburg, VA



©2008 Hammett & Edison, Inc.

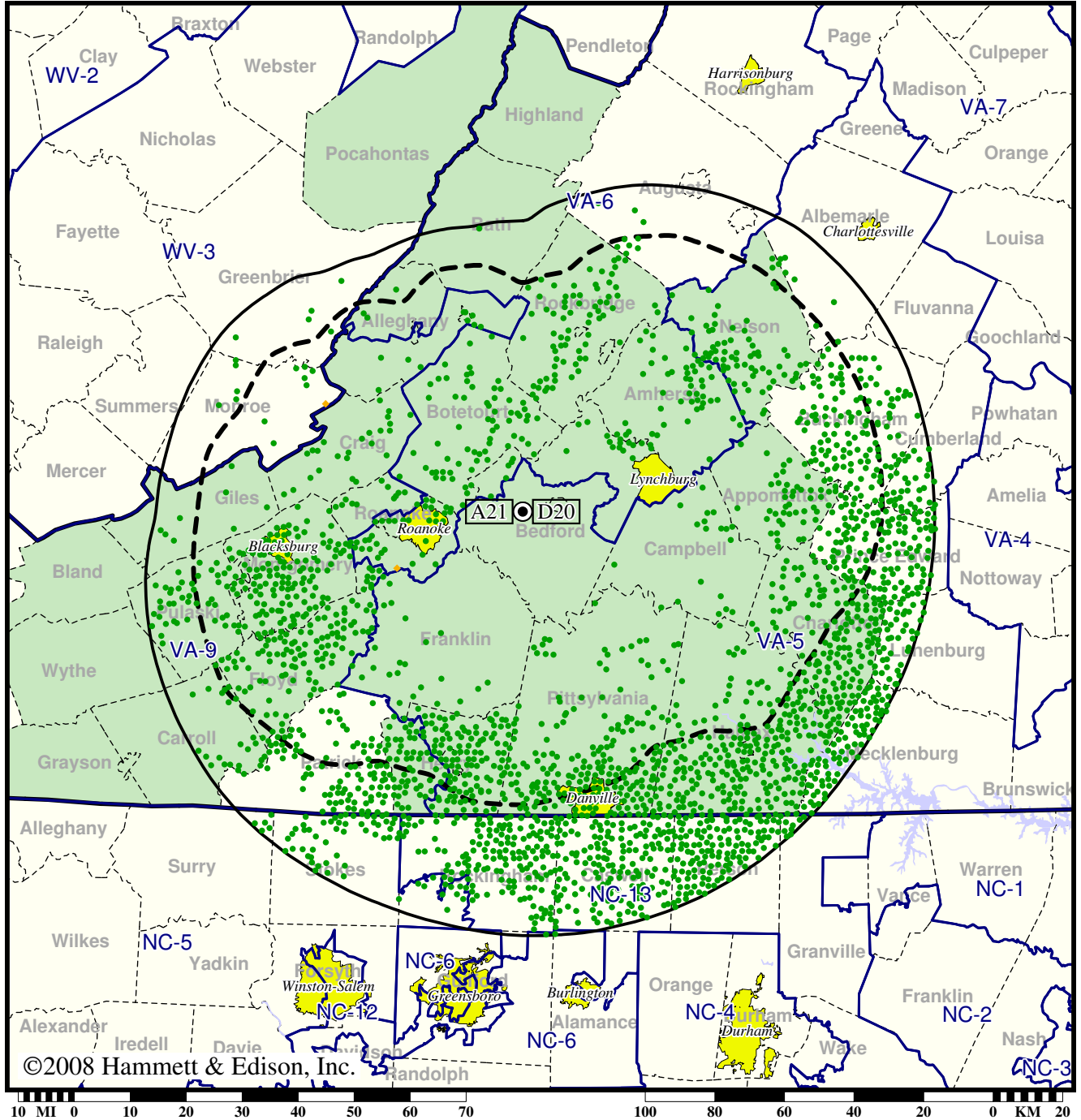
- Coverage gained after DTV transition
- (no symbol) No change in coverage
- ◆ Coverage lost but still served by same network
- ▲ Coverage lost and no other service by same network

TV Station WWCW • Analog Channel 21, DTV Channel 20 • Lynchburg, VA

Expected Change In Coverage: Granted Construction Permit

CP (solid): 916 kW ERP at 500 m HAAT, Network: Fox
vs. Analog (dashed): 4170 kW ERP at 500 m HAAT, Network: Fox

Market: Roanoke-Lynchburg, VA



©2008 Hammett & Edison, Inc.

- Coverage gained after DTV transition
- (no symbol) No change in coverage
- ◆ Coverage lost but still served by same network