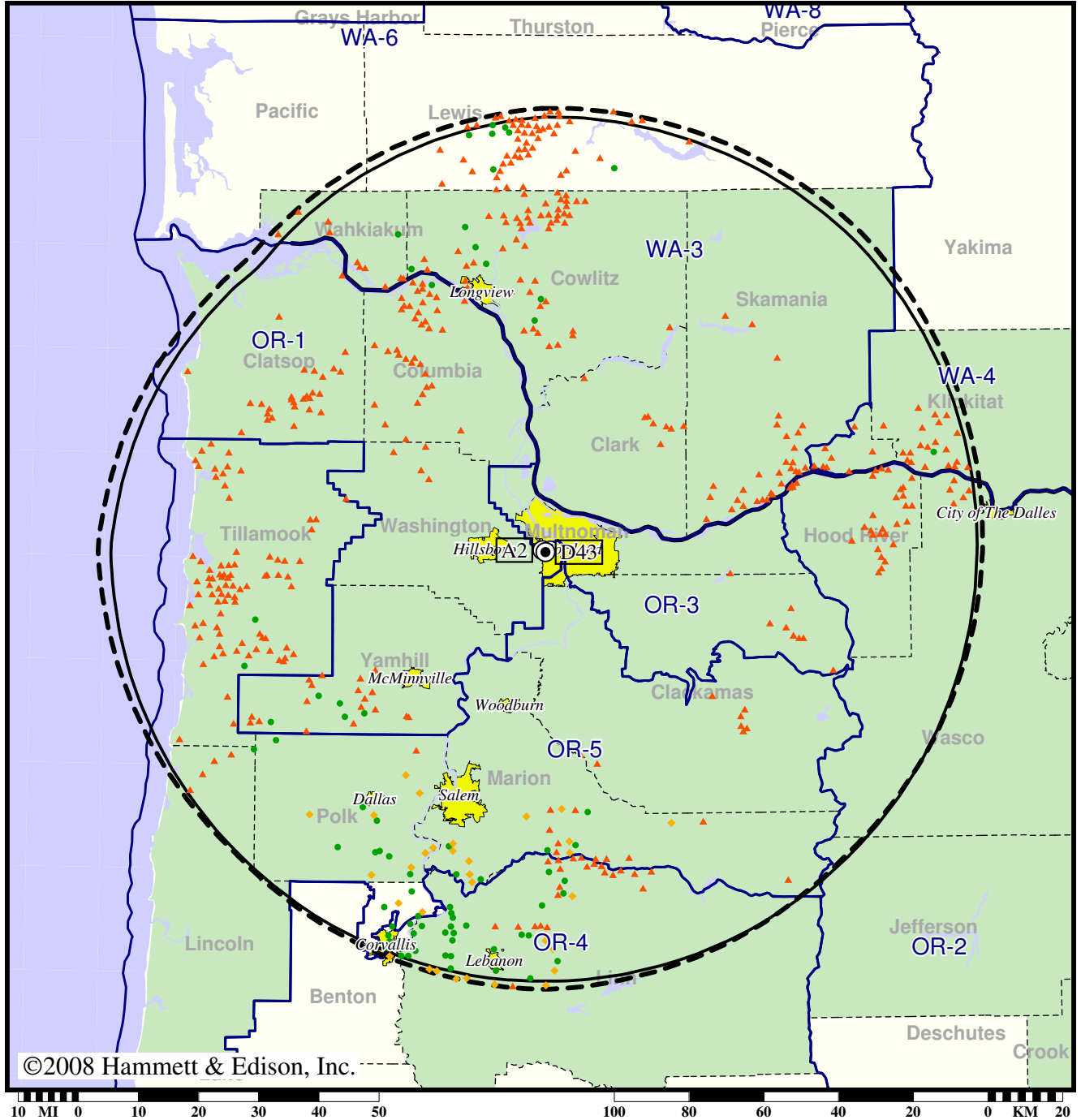


TV Station KATU • Analog Channel 2, DTV Channel 43 • Portland, OR

Expected Change In Coverage: Licensed Operation

Licensed (solid): 1000 kW ERP at 524 m HAAT, Network: ABC  
vs. Analog (dashed): 100 kW ERP at 475 m HAAT, Network: ABC

Market: Portland, OR



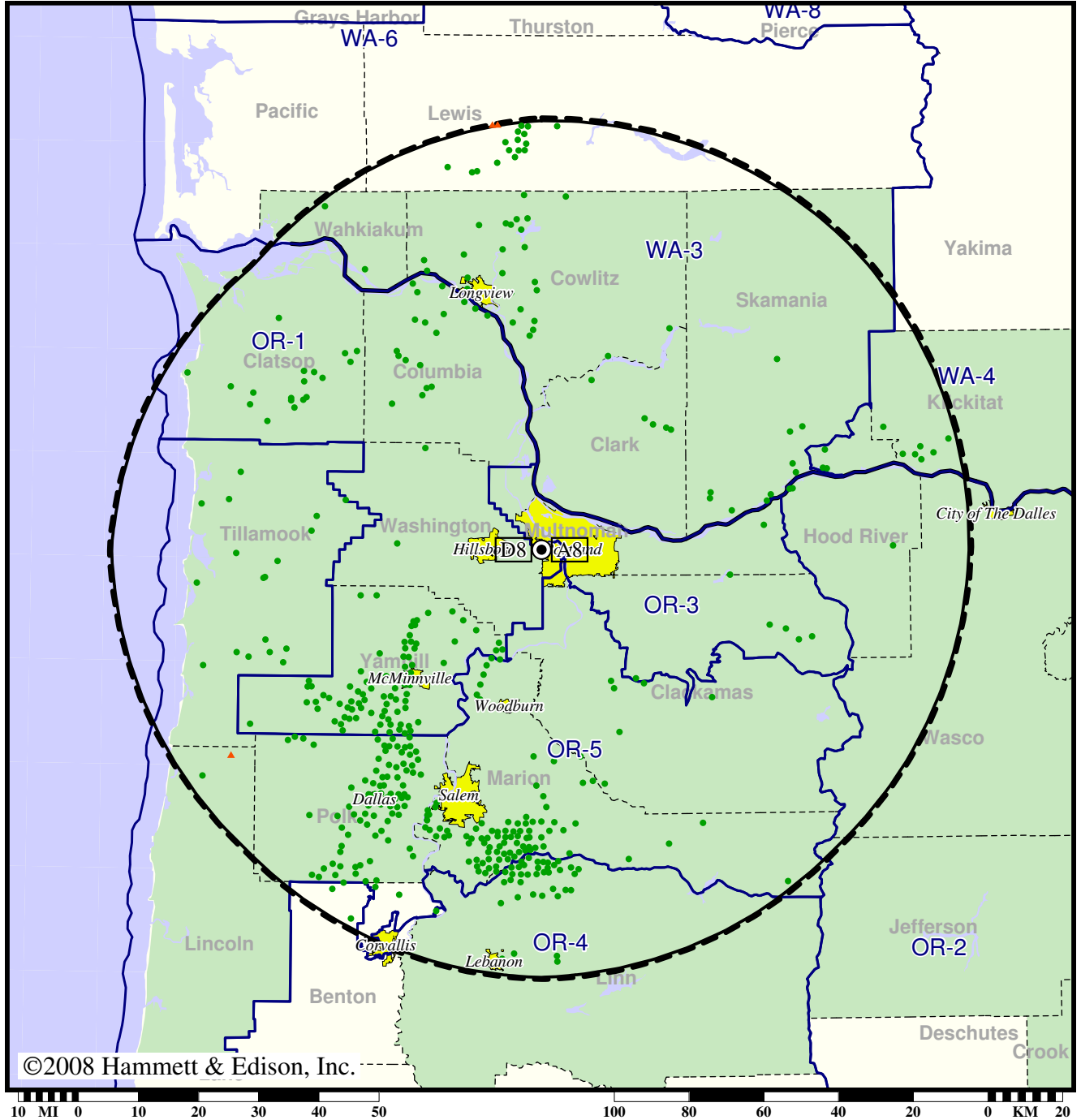
- Coverage gained after DTV transition
- (no symbol) No change in coverage
- ◆ Coverage lost but still served by same network
- ▲ Coverage lost and no other service by same network

TV Station KGW • Analog Channel 8, DTV Channel 8 • Portland, OR

Expected Change In Coverage: Post-Transition Appendix B Facility

Appendix B (solid): 21.9 kW ERP at 509 m HAAT, Network: NBC  
vs. Analog (dashed): 316 kW ERP at 524 m HAAT, Network: NBC

Market: Portland, OR



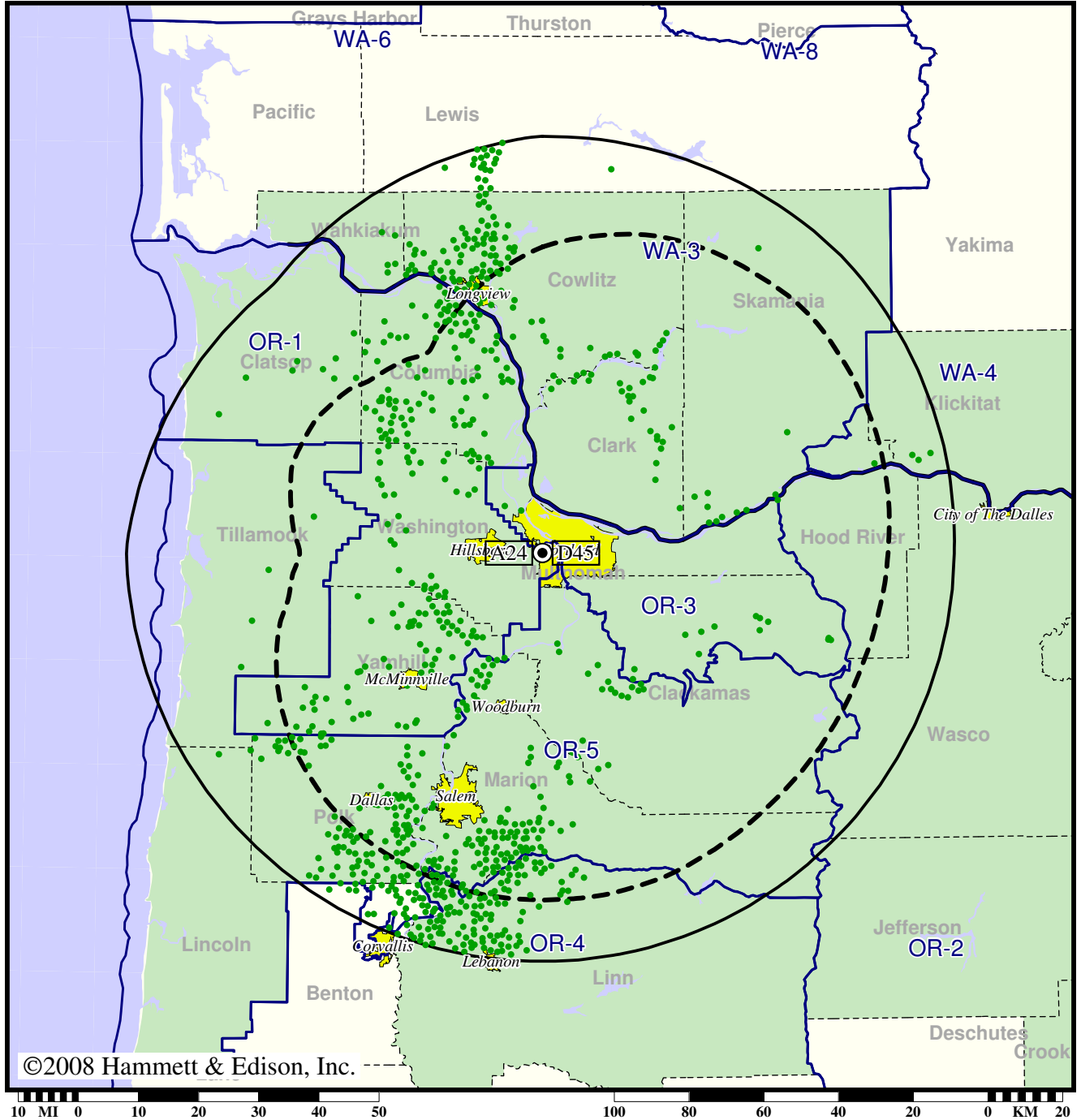
- Coverage gained after DTV transition
- (no symbol) No change in coverage
- ▲ Coverage lost after DTV transition

TV Station KNMT • Analog Channel 24, DTV Channel 45 • Portland, OR

Expected Change In Coverage: Licensed Operation

Licensed (solid): 1000 kW ERP at 455 m HAAT  
vs. Analog (dashed): 2690 kW ERP at 463 m HAAT

Market: Portland, OR



©2008 Hammett & Edison, Inc.

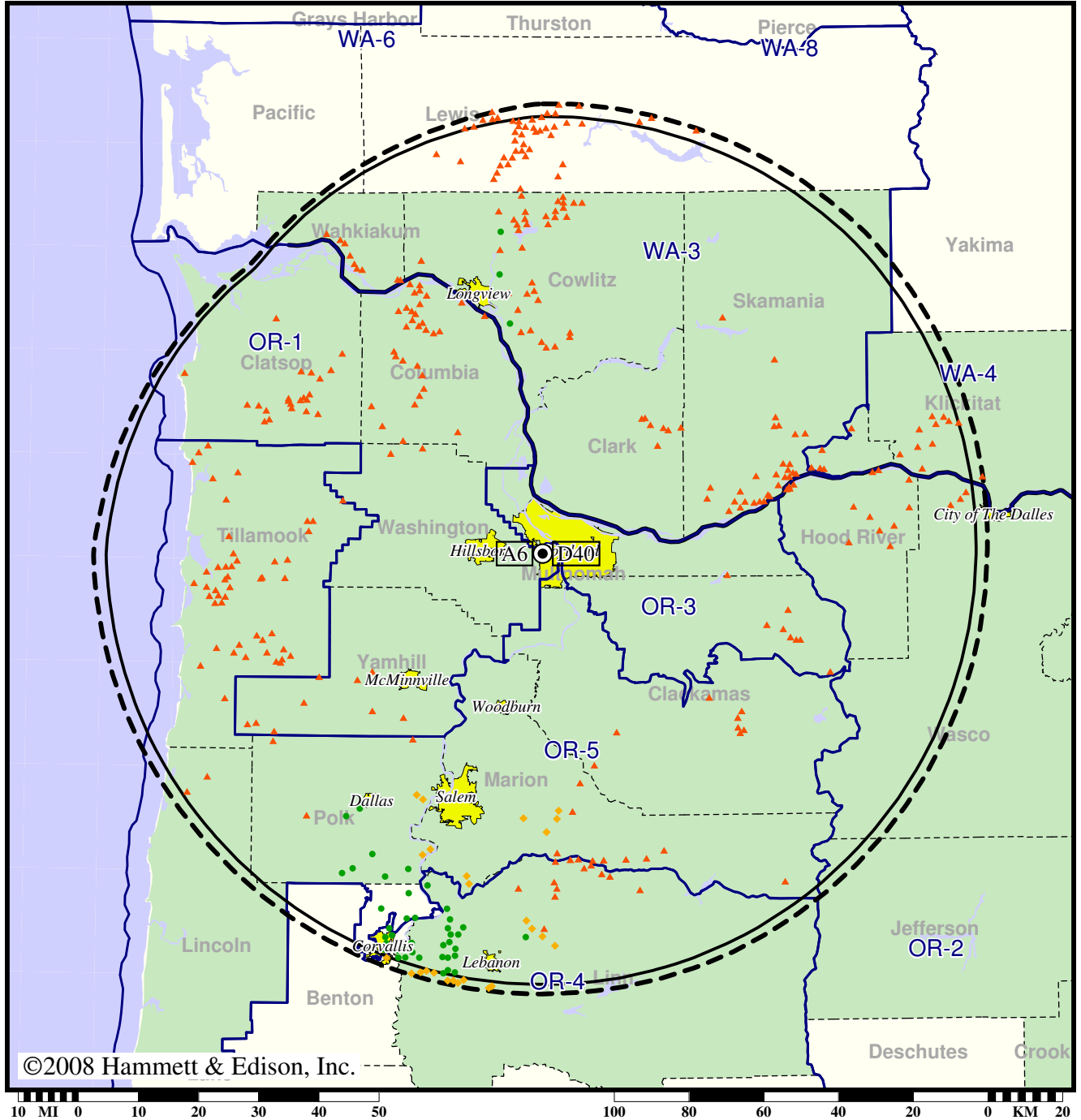
- Coverage gained after DTV transition
- (no symbol) No change in coverage

TV Station KOIN • Analog Channel 6, DTV Channel 40 • Portland, OR

Expected Change In Coverage: Licensed Operation

Licensed (solid): 1000 kW ERP at 523 m HAAT, Network: CBS  
vs. Analog (dashed): 100 kW ERP at 490 m HAAT, Network: CBS

Market: Portland, OR



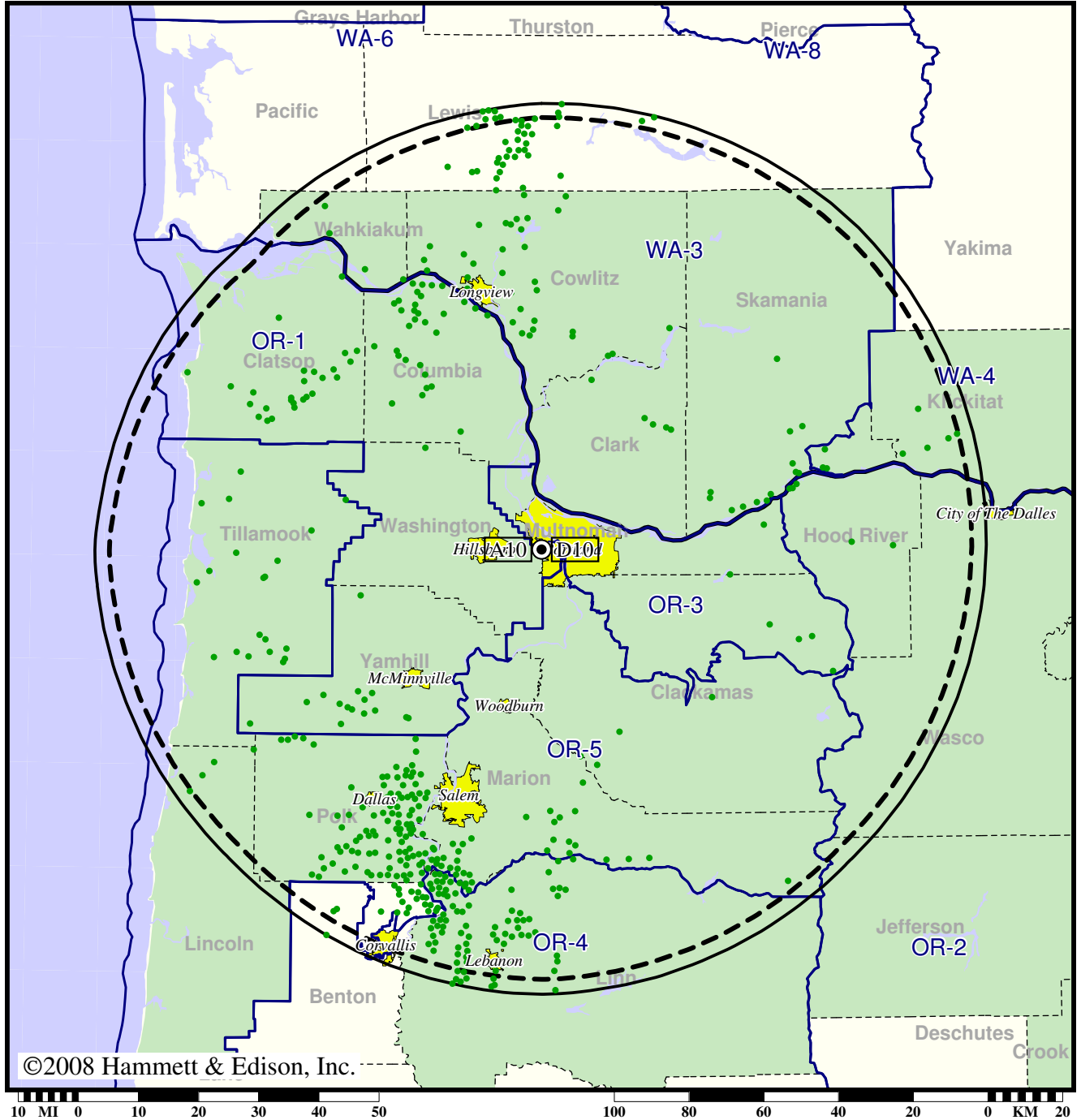
- Coverage gained after DTV transition
- (no symbol) No change in coverage
- ◆ Coverage lost but still served by same network
- ▲ Coverage lost and no other service by same network

Station KOPB-TV • Analog Channel 10, DTV Channel 10 • Portland, OR

Expected Change In Coverage: Granted Construction Permit

CP (solid): 32.4 kW ERP at 524 m HAAT, Network: PBS  
vs. Analog (dashed): 316 kW ERP at 524 m HAAT, Network: PBS

Market: Portland, OR



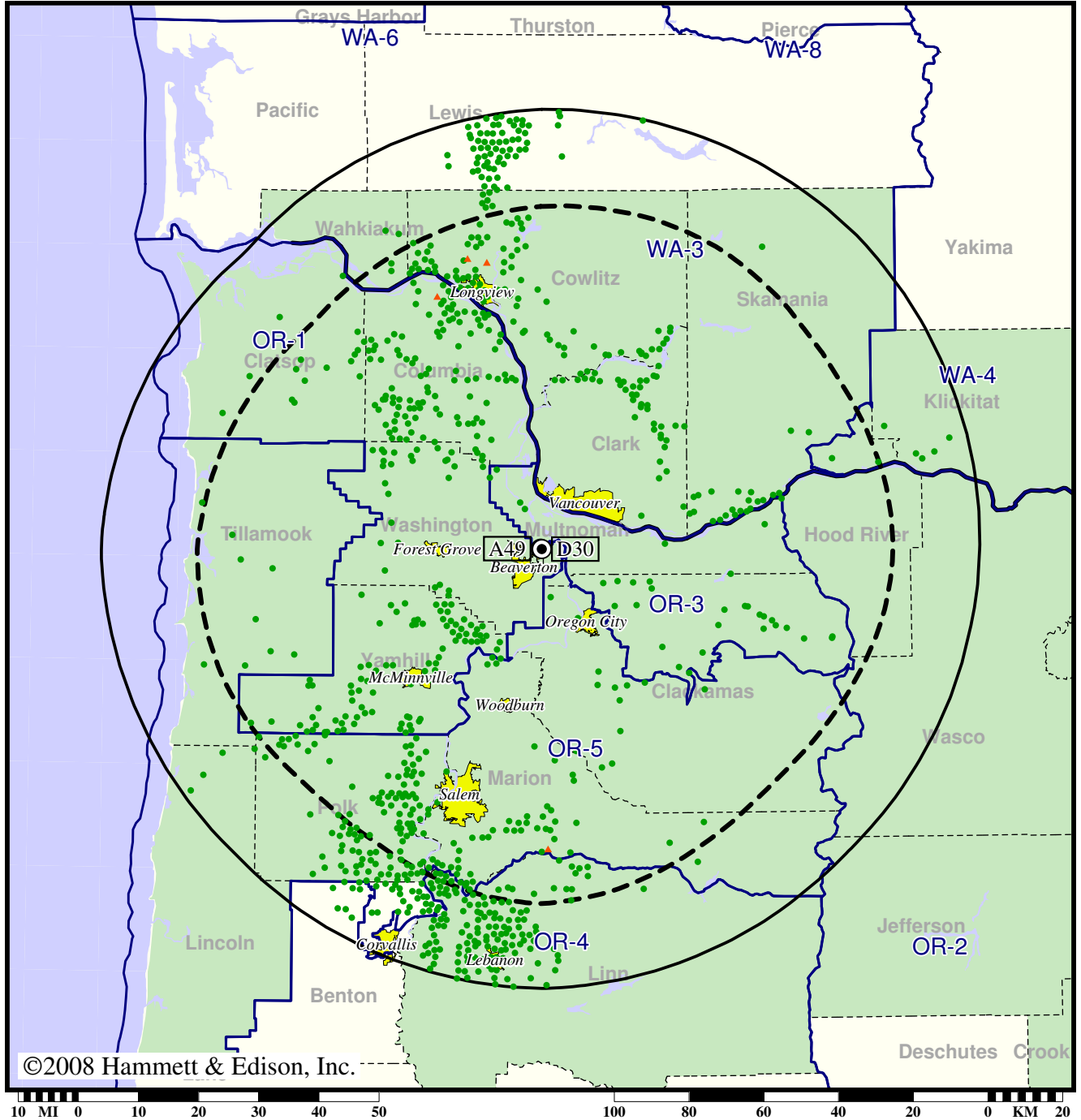
- Coverage gained after DTV transition
- (no symbol) No change in coverage

TV Station KPDX • Analog Channel 49, DTV Channel 30 • Vancouver, WA

Expected Change In Coverage: Granted Construction Permit

CP (solid): 1000 kW ERP at 513 m HAAT  
vs. Analog (dashed): 2950 kW ERP at 527 m HAAT

Market: Portland, OR



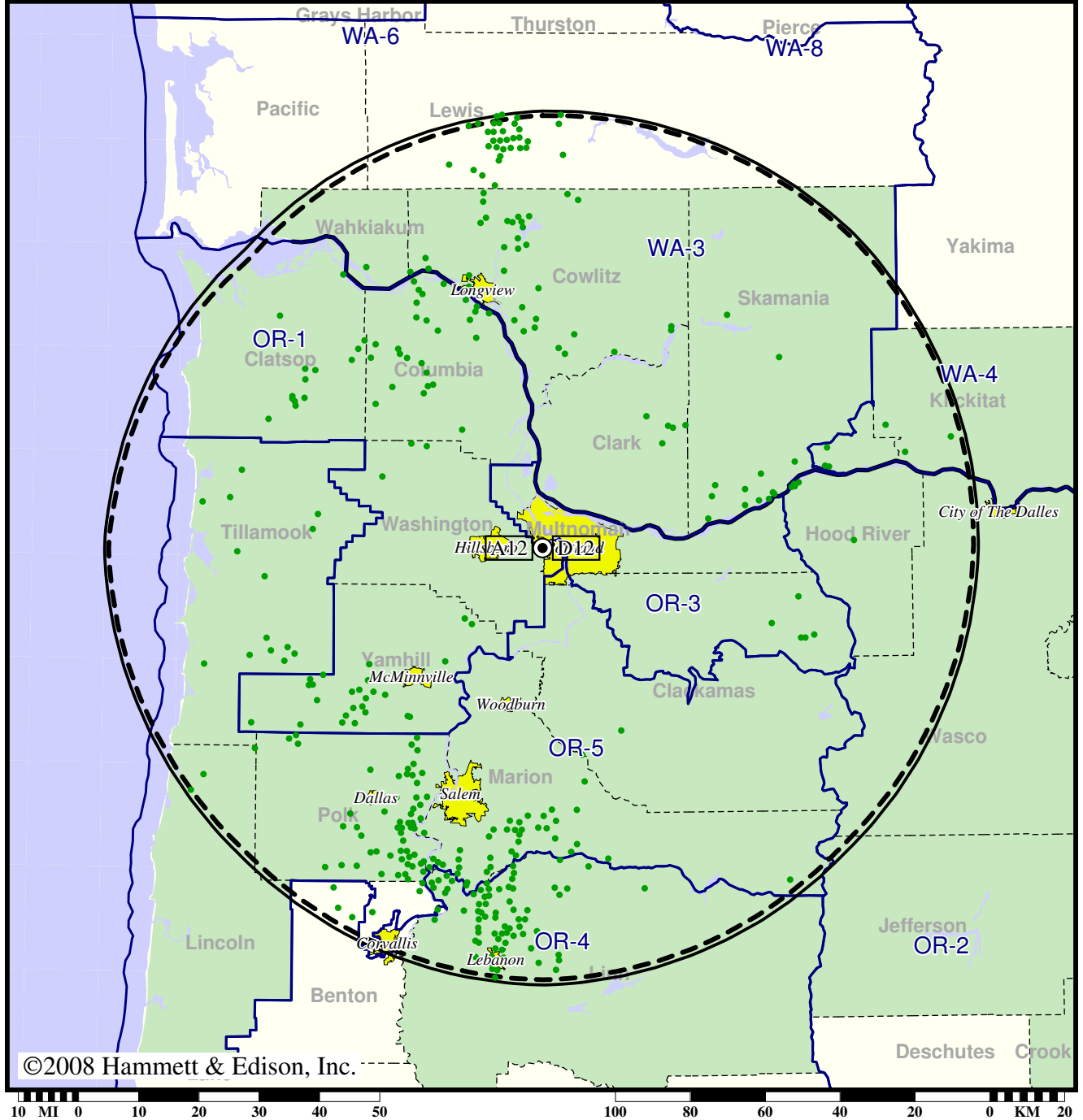
- Coverage gained after DTV transition
- (no symbol) No change in coverage
- ▲ Coverage lost after DTV transition

TV Station KPTV • Analog Channel 12, DTV Channel 12 • Portland, OR

Expected Change In Coverage: Granted Construction Permit

CP (solid): 24.5 kW ERP at 529 m HAAT, Network: Fox  
vs. Analog (dashed): 316 kW ERP at 544 m HAAT, Network: Fox

Market: Portland, OR



- Coverage gained after DTV transition
- (no symbol) No change in coverage



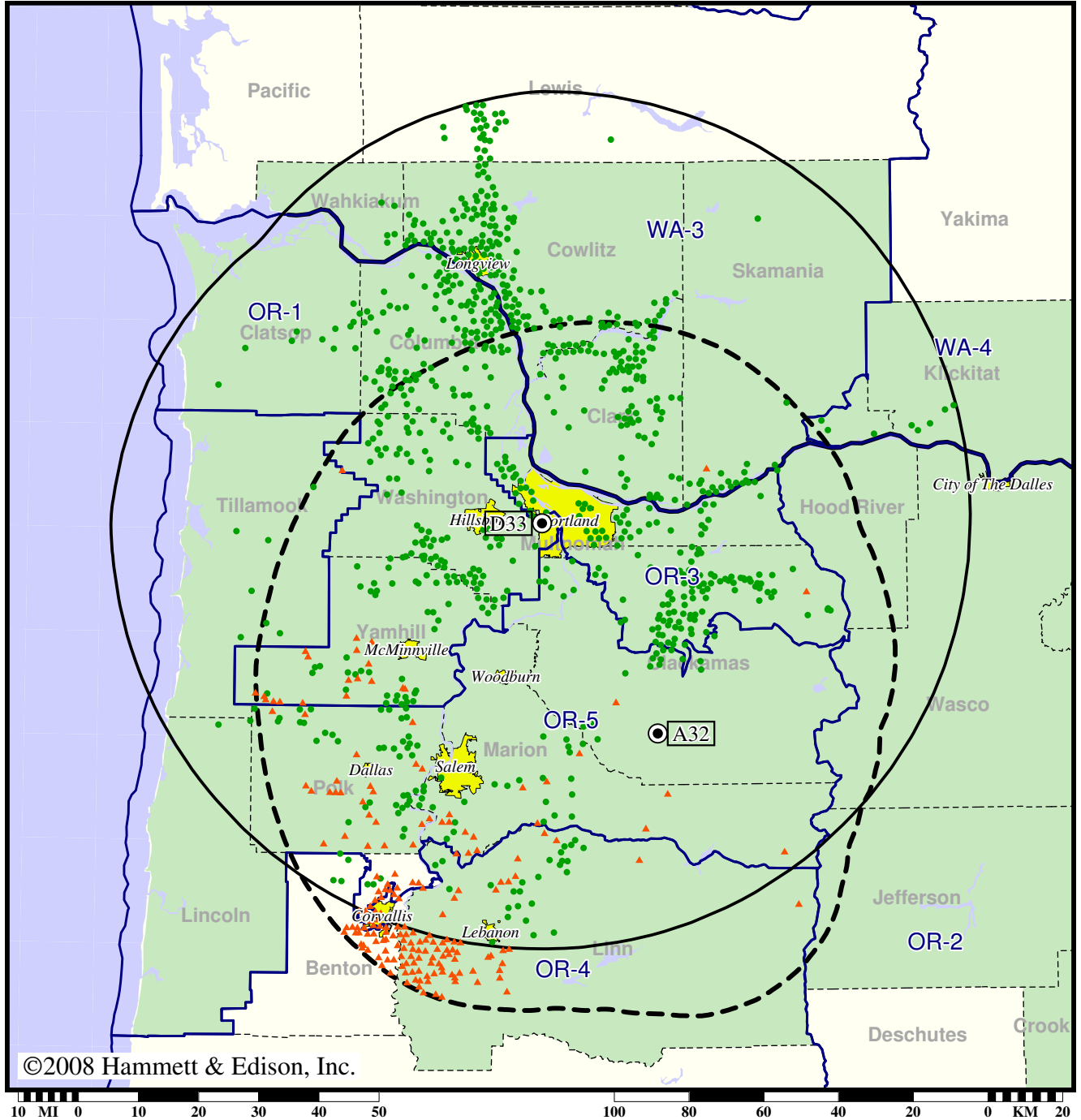


Station KRCW-TV • Analog Channel 32, DTV Channel 33 • Salem, OR

Expected Change In Coverage: Licensed Operation

Licensed (solid): 750 kW ERP at 523 m HAAT  
vs. Analog (dashed): 5000 kW ERP at 544 m HAAT

Market: Portland, OR



©2008 Hammett & Edison, Inc.

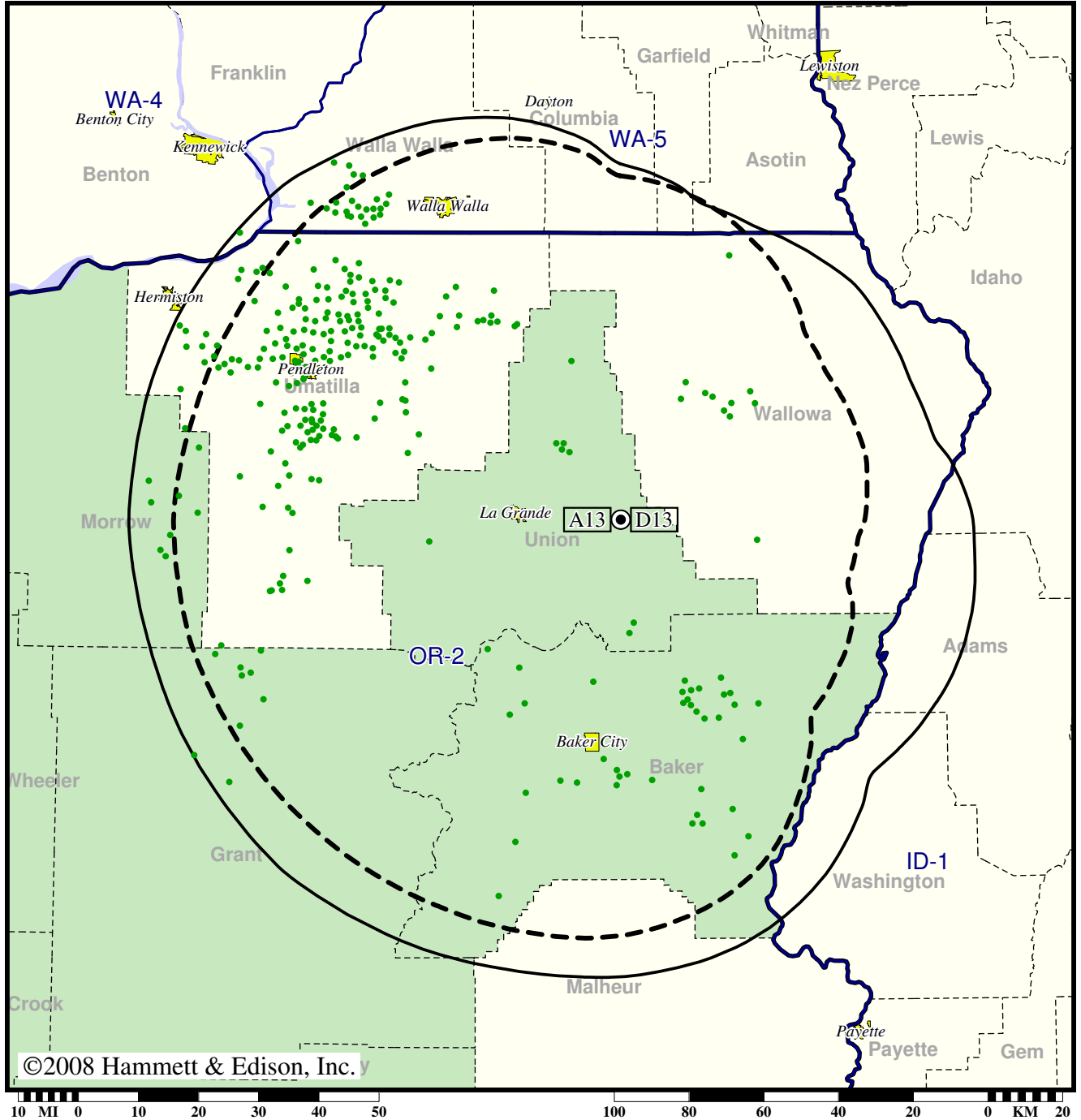
- Coverage gained after DTV transition
- (no symbol) No change in coverage
- ▲ Coverage lost after DTV transition

TV Station KTVR • Analog Channel 13, DTV Channel 13 • La Grande, OR

Expected Change In Coverage: Granted Construction Permit

CP (solid): 16.1 kW ERP at 775 m HAAT, Network: PBS  
vs. Analog (dashed): 65.0 kW ERP at 775 m HAAT, Network: PBS

Market: Portland, OR



©2008 Hammett & Edison, Inc.

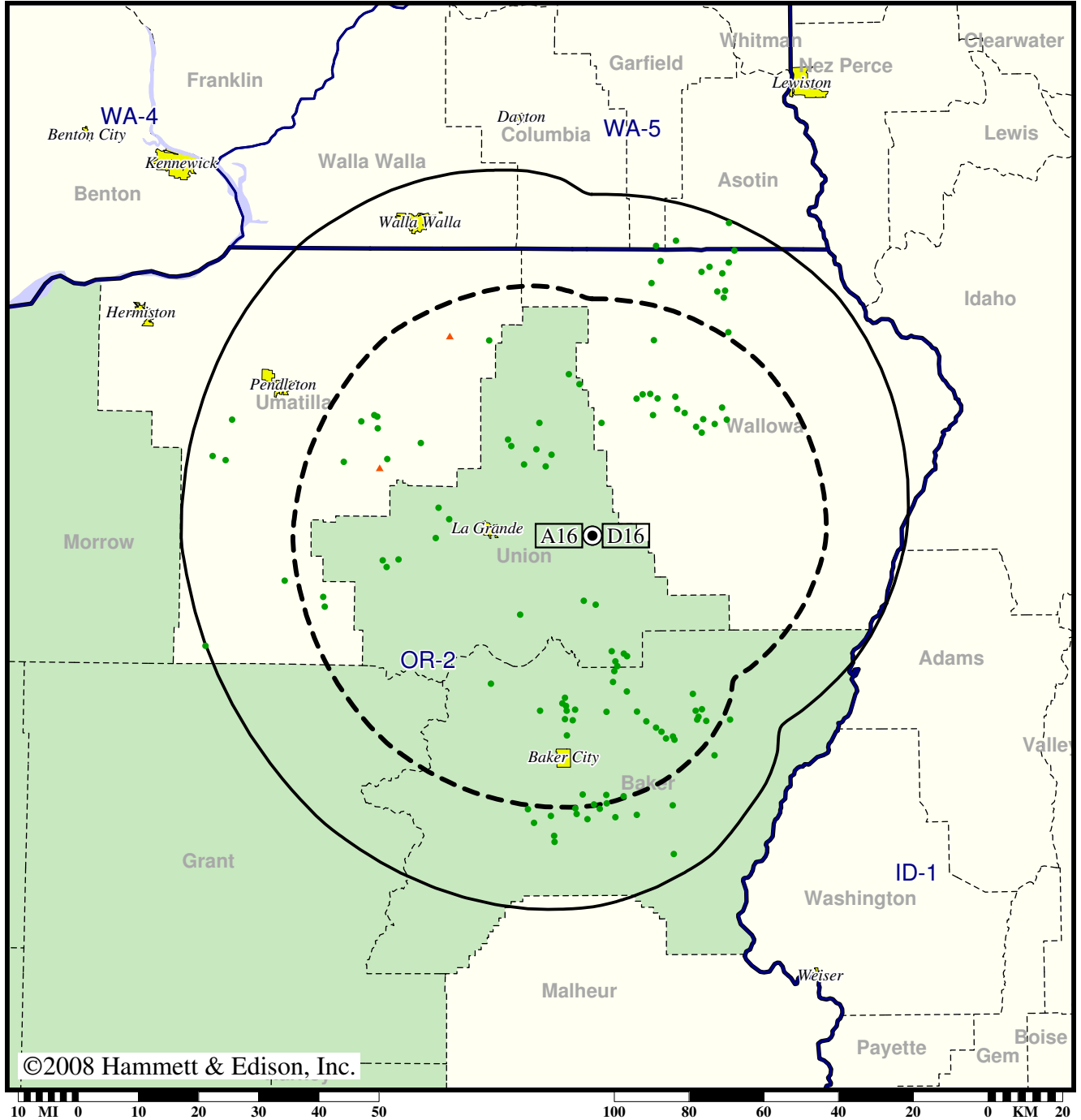
- Coverage gained after DTV transition
- (no symbol) No change in coverage

TV Station KUNP • Analog Channel 16, DTV Channel 16 • La Grande, OR

Expected Change In Coverage: Granted Rulemaking Petition

Granted Rulemaking (solid): 50.0 kW ERP at 773 m HAAT  
vs. Analog (dashed): 60.3 kW ERP at 773 m HAAT

Market: Portland, OR



©2008 Hammett & Edison, Inc.

- Coverage gained after DTV transition
- (no symbol) No change in coverage
- ▲ Coverage lost after DTV transition