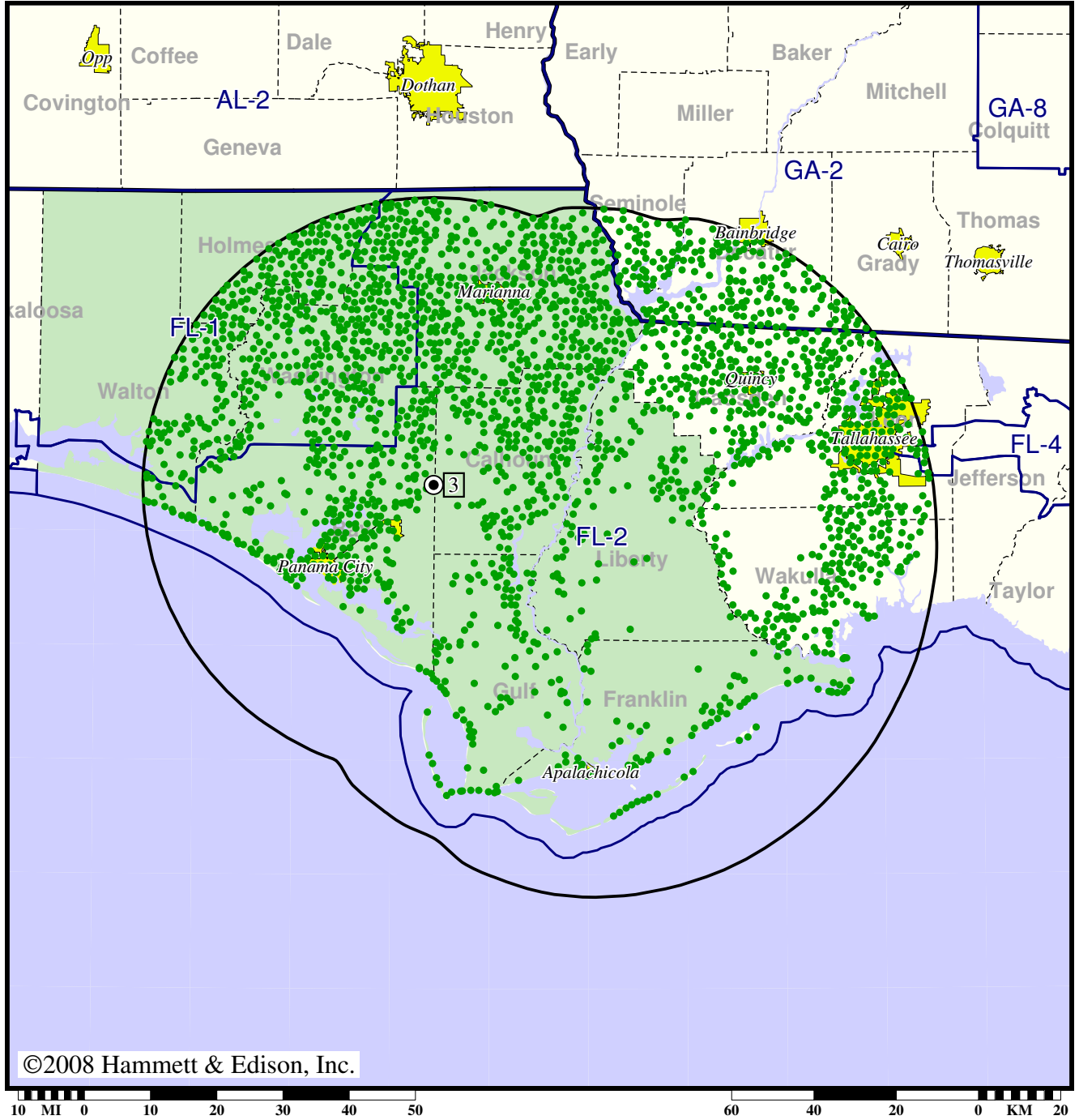


New DTV Station • Channel 3 • Apalachicola, FL
Expected Change In Coverage: Granted Construction Permit
CP (solid): 45.0 kW ERP at 334 m HAAT
Market: Panama City, FL



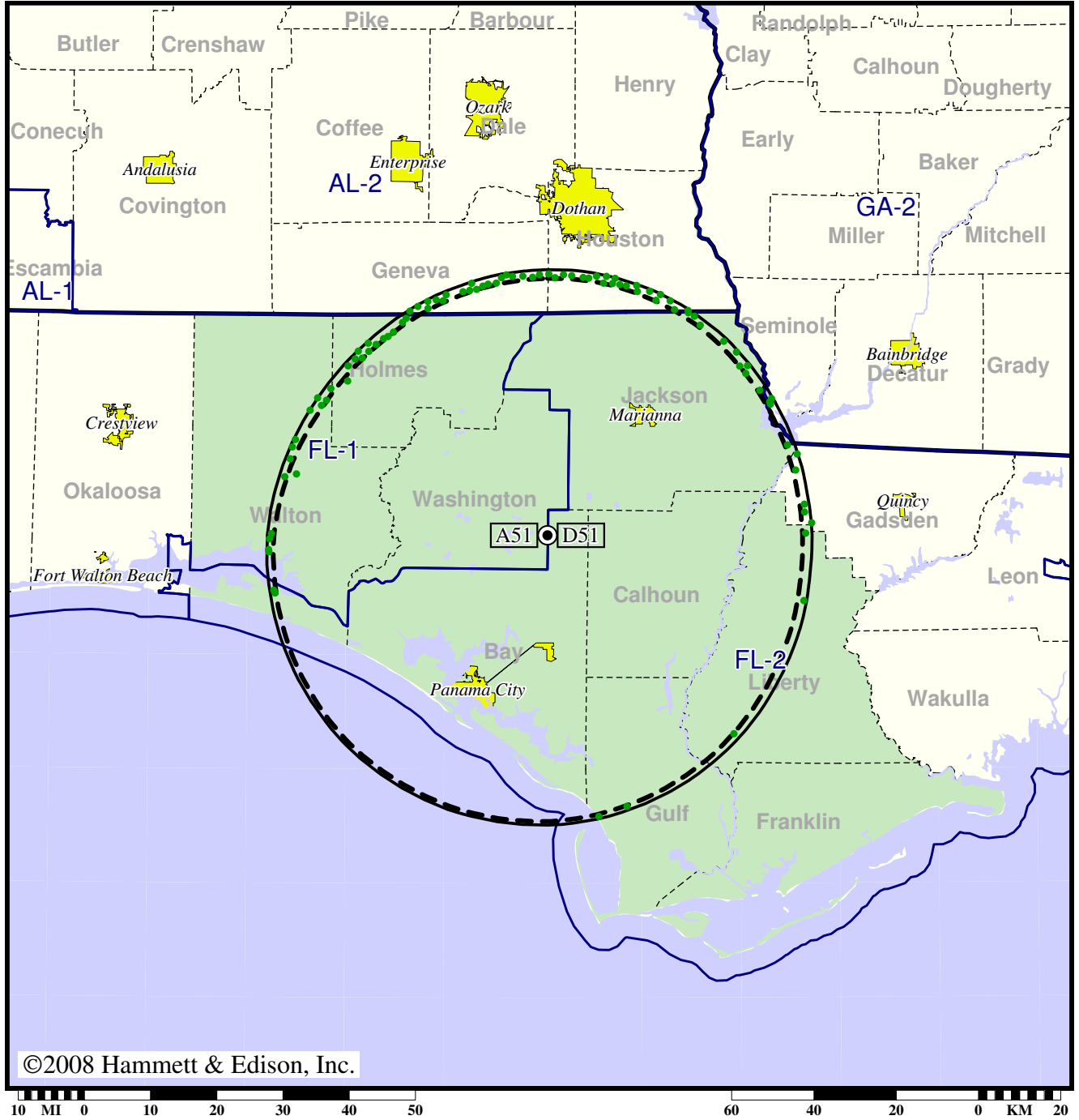
● Coverage gained after DTV transition
 (no symbol) No change in coverage

TV Station WBIF • Analog Channel 51, DTV Channel 51 • Marianna, FL

Expected Change In Coverage: Granted Construction Permit

CP (solid): 50.0 kW ERP at 254 m HAAT
vs. Analog (dashed): 1970 kW ERP at 254 m HAAT

Market: Panama City, FL



©2008 Hammett & Edison, Inc.

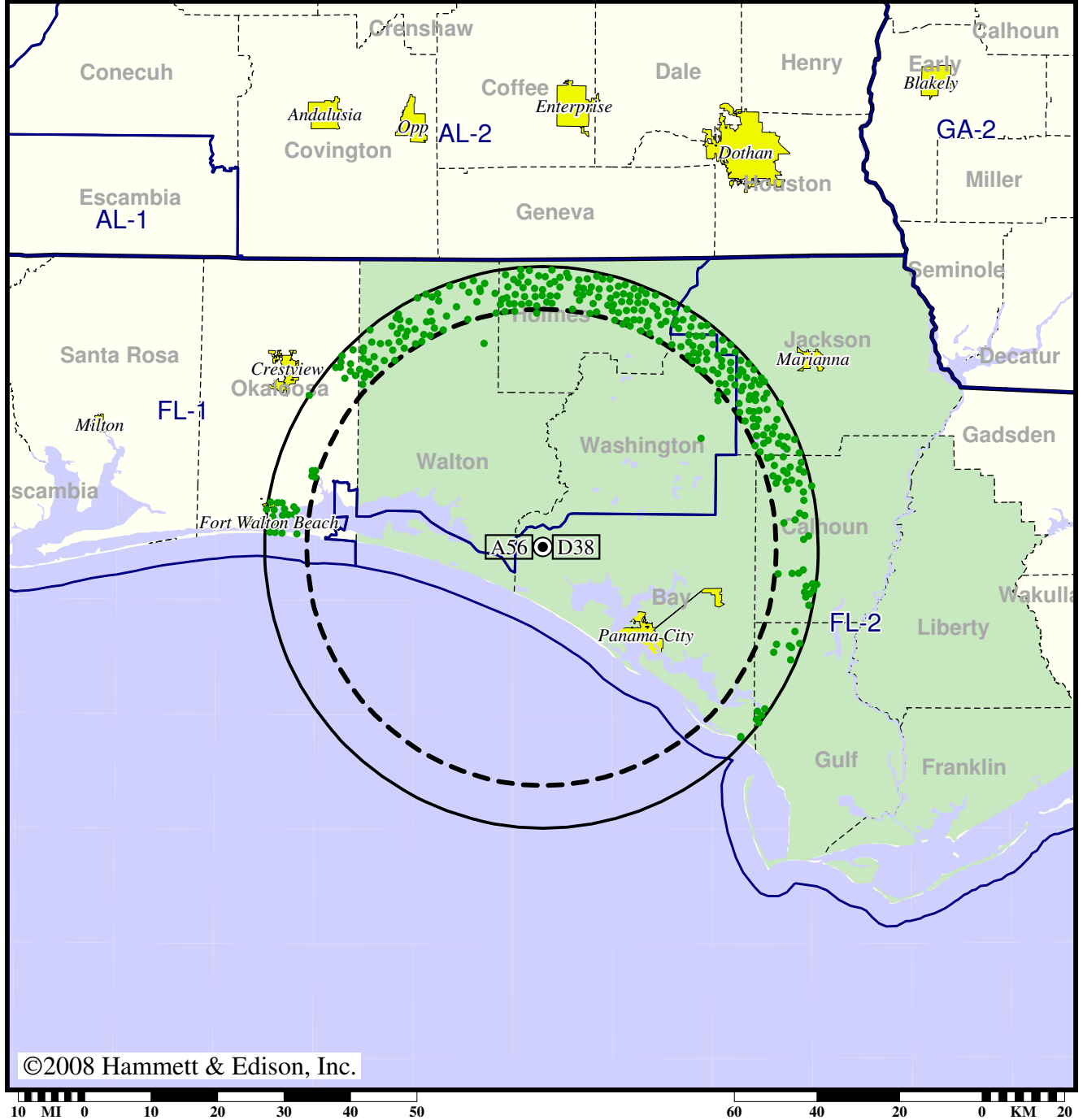
- Coverage gained after DTV transition
- (no symbol) No change in coverage

TV Station WFSG • Analog Channel 56, DTV Channel 38 • Panama City, FL

Expected Change In Coverage: Granted Construction Permit

CP (solid): 158 kW ERP at 133 m HAAT, Network: PBS
vs. Analog (dashed): 1150 kW ERP at 155 m HAAT, Network: PBS

Market: Panama City, FL



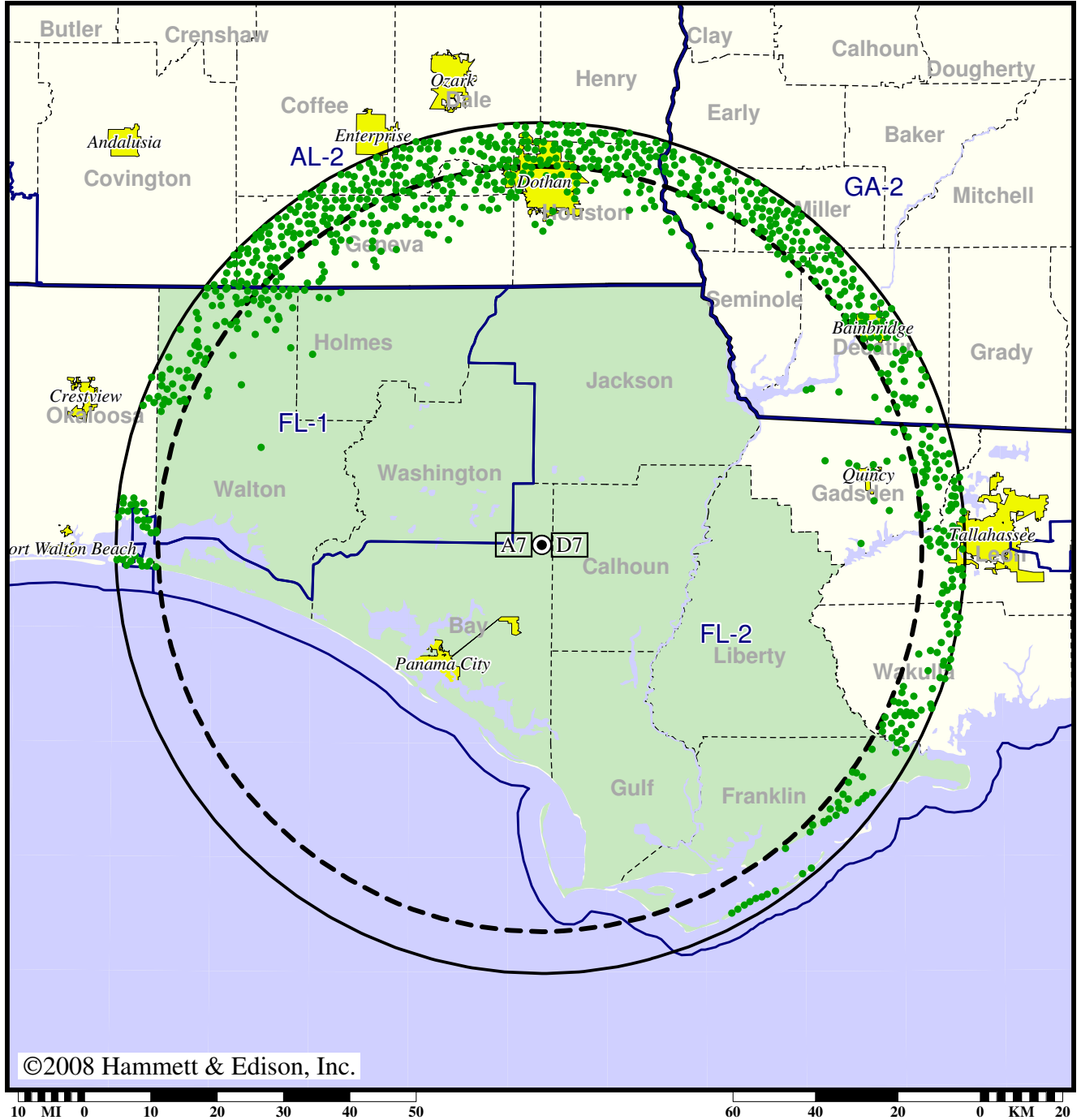
- Coverage gained after DTV transition
- (no symbol) No change in coverage

Station WJHG-TV • Analog Channel 7, DTV Channel 7 • Panama City, FL

Expected Change In Coverage: Granted Construction Permit

CP (solid): 49.0 kW ERP at 262 m HAAT, Network: NBC
vs. Analog (dashed): 316 kW ERP at 265 m HAAT, Network: NBC

Market: Panama City, FL



©2008 Hammett & Edison, Inc.

10 MI 0 10 20 30 40 50 60 40 20 0 KM 20

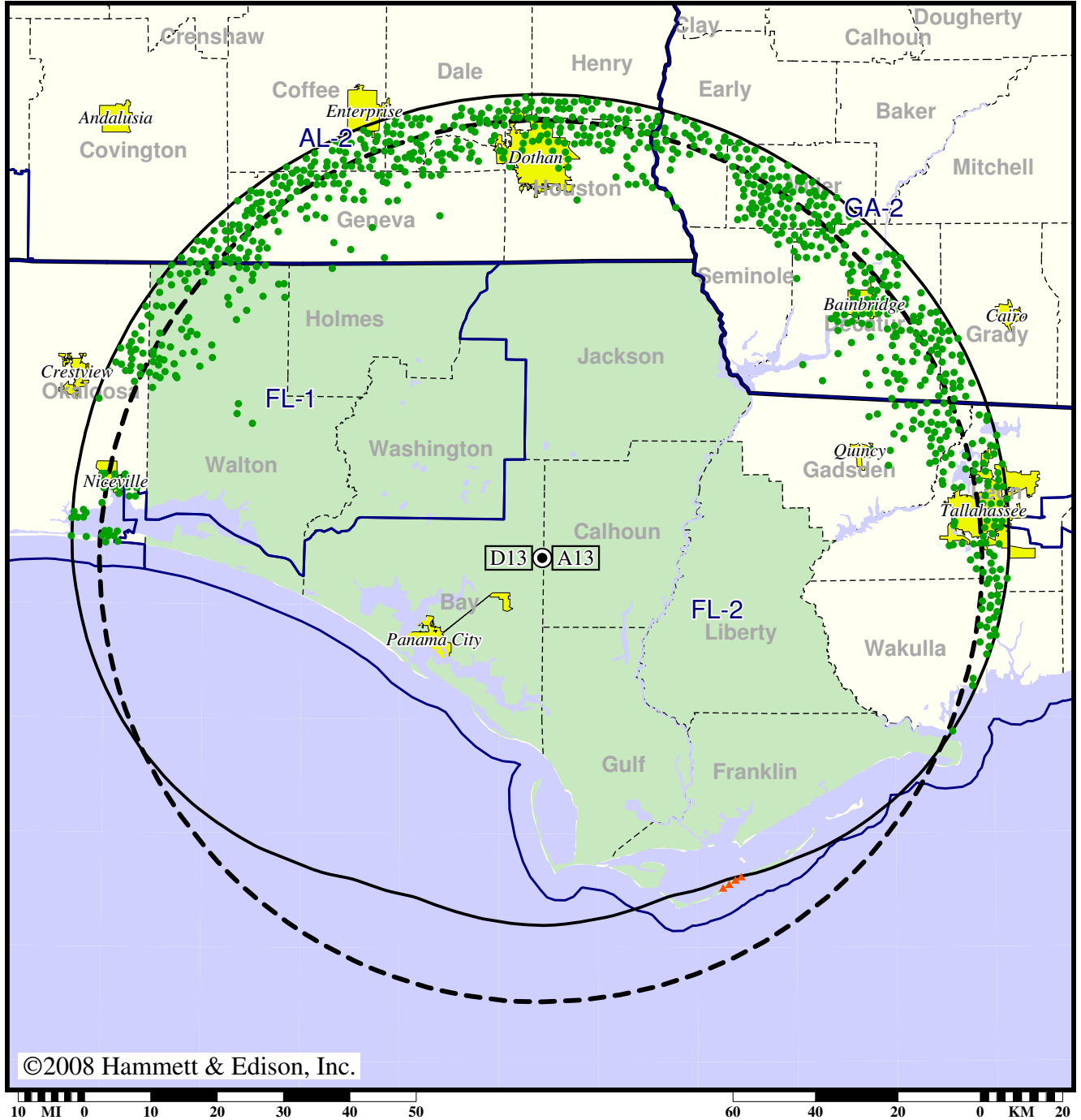
- Coverage gained after DTV transition
- (no symbol) No change in coverage

TV Station WMBB • Analog Channel 13, DTV Channel 13 • Panama City, FL

Expected Change In Coverage: Granted Construction Permit

CP (solid): 42.0 kW ERP at 434 m HAAT, Network: ABC
vs. Analog (dashed): 316 kW ERP at 437 m HAAT, Network: ABC

Market: Panama City, FL



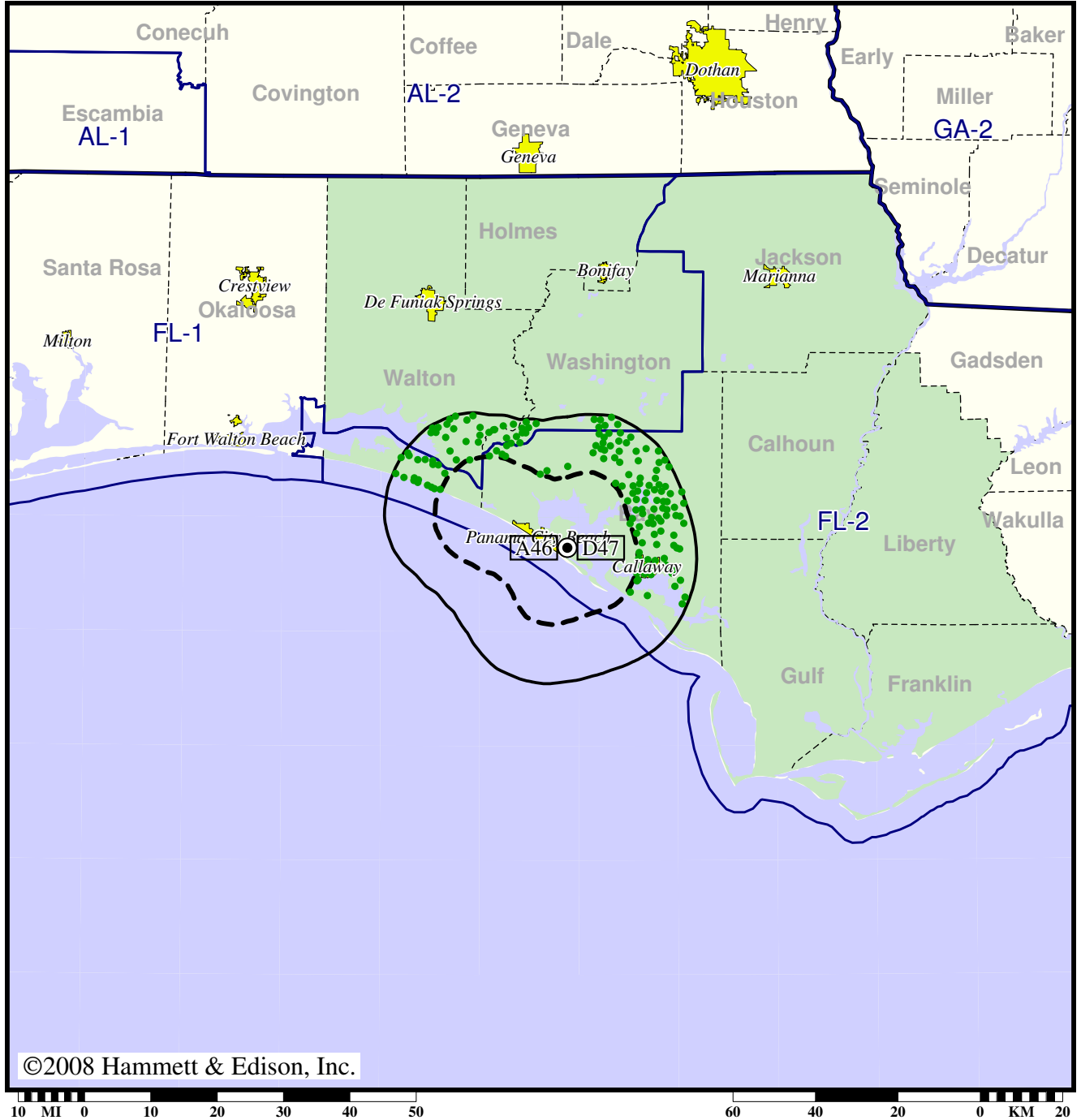
- Coverage gained after DTV transition
- (no symbol) No change in coverage
- ▲ Coverage lost after DTV transition

TV Station WPCT • Analog Channel 46, DTV Channel 47 • Panama City Beach, FL

Expected Change In Coverage: Licensed Operation

Licensed (solid): 12.9 kW ERP at 59 m HAAT
vs. Analog (dashed): 126 kW ERP at 59 m HAAT

Market: Panama City, FL



©2008 Hammett & Edison, Inc.

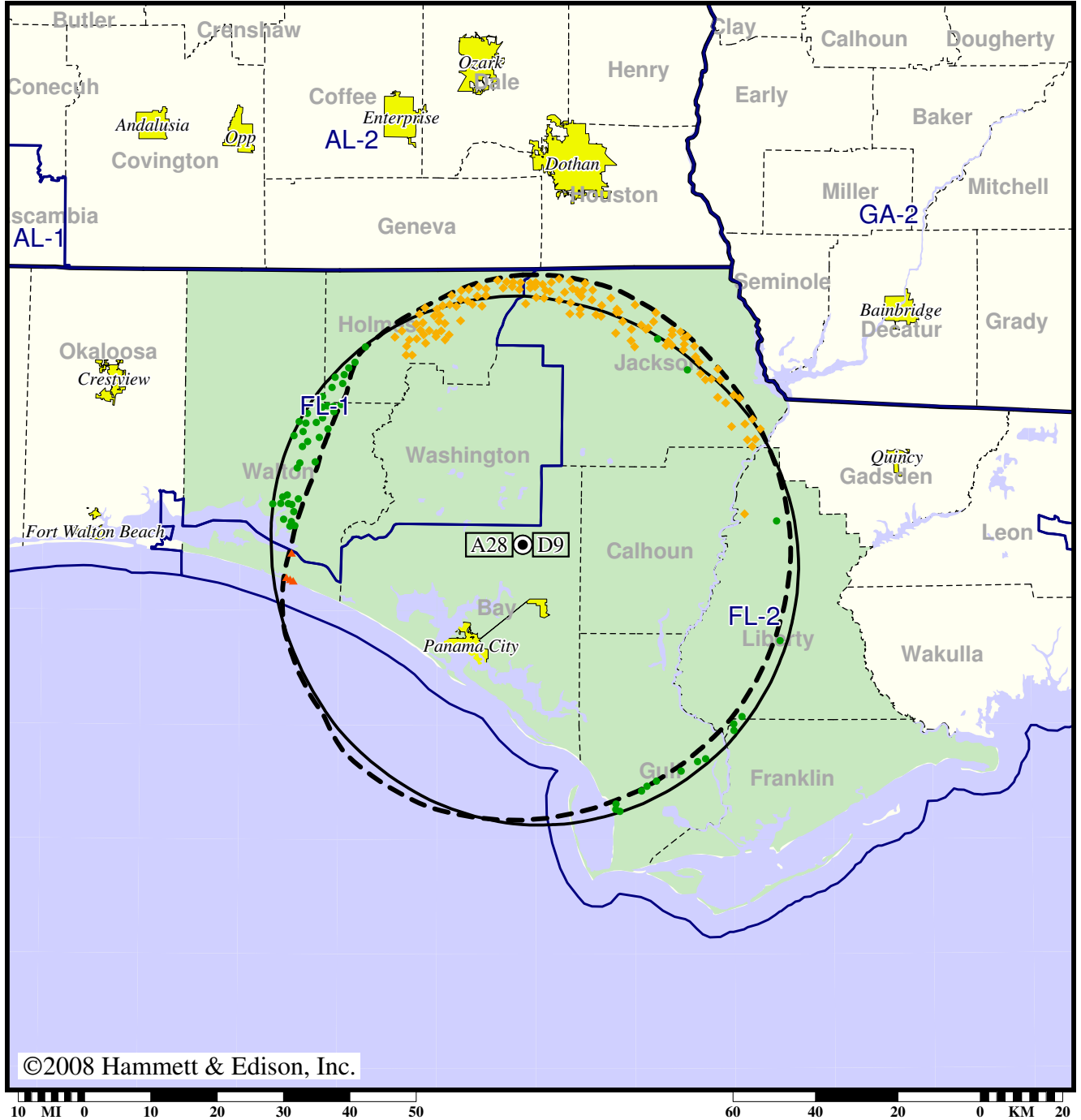
- Coverage gained after DTV transition
- (no symbol) No change in coverage

TV Station WPGX • Analog Channel 28, DTV Channel 9 • Panama City, FL

Expected Change In Coverage: Licensed Operation

Licensed (solid): 2.30 kW ERP at 142 m HAAT, Network: Fox
 vs. Analog (dashed): 1260 kW ERP at 228 m HAAT, Network: Fox

Market: Panama City, FL



©2008 Hammett & Edison, Inc.

- Coverage gained after DTV transition
- (no symbol) No change in coverage
- ◆ Coverage lost but still served by same network
- ▲ Coverage lost and no other service by same network