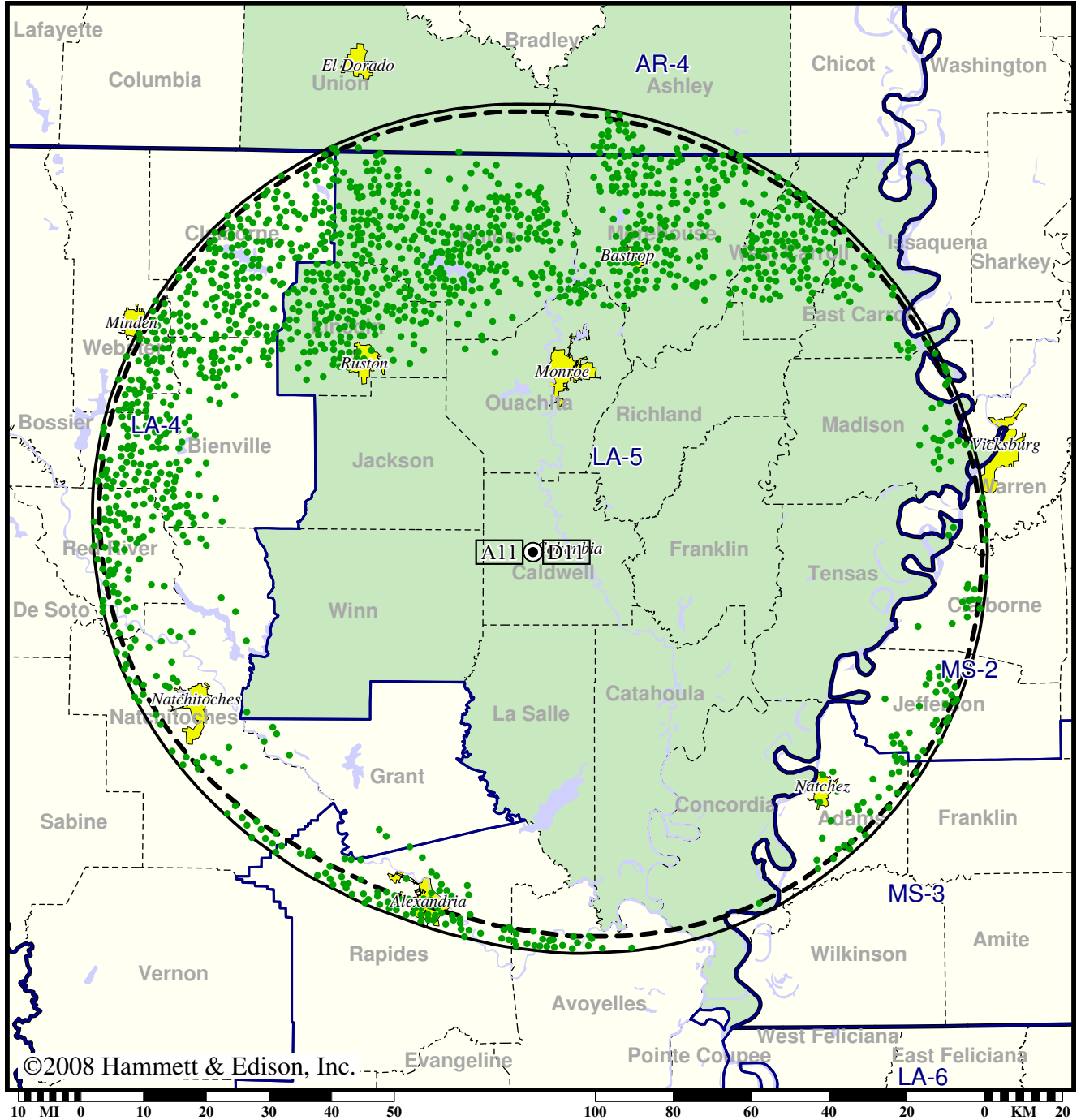


TV Station KAQY • Analog Channel 11, DTV Channel 11 • Columbia, LA

Expected Change In Coverage: Granted Construction Permit

CP (solid): 25.0 kW ERP at 544 m HAAT, Network: ABC
vs. Analog (dashed): 316 kW ERP at 544 m HAAT, Network: ABC

Market: Monroe, LA-EI Dorado, AR



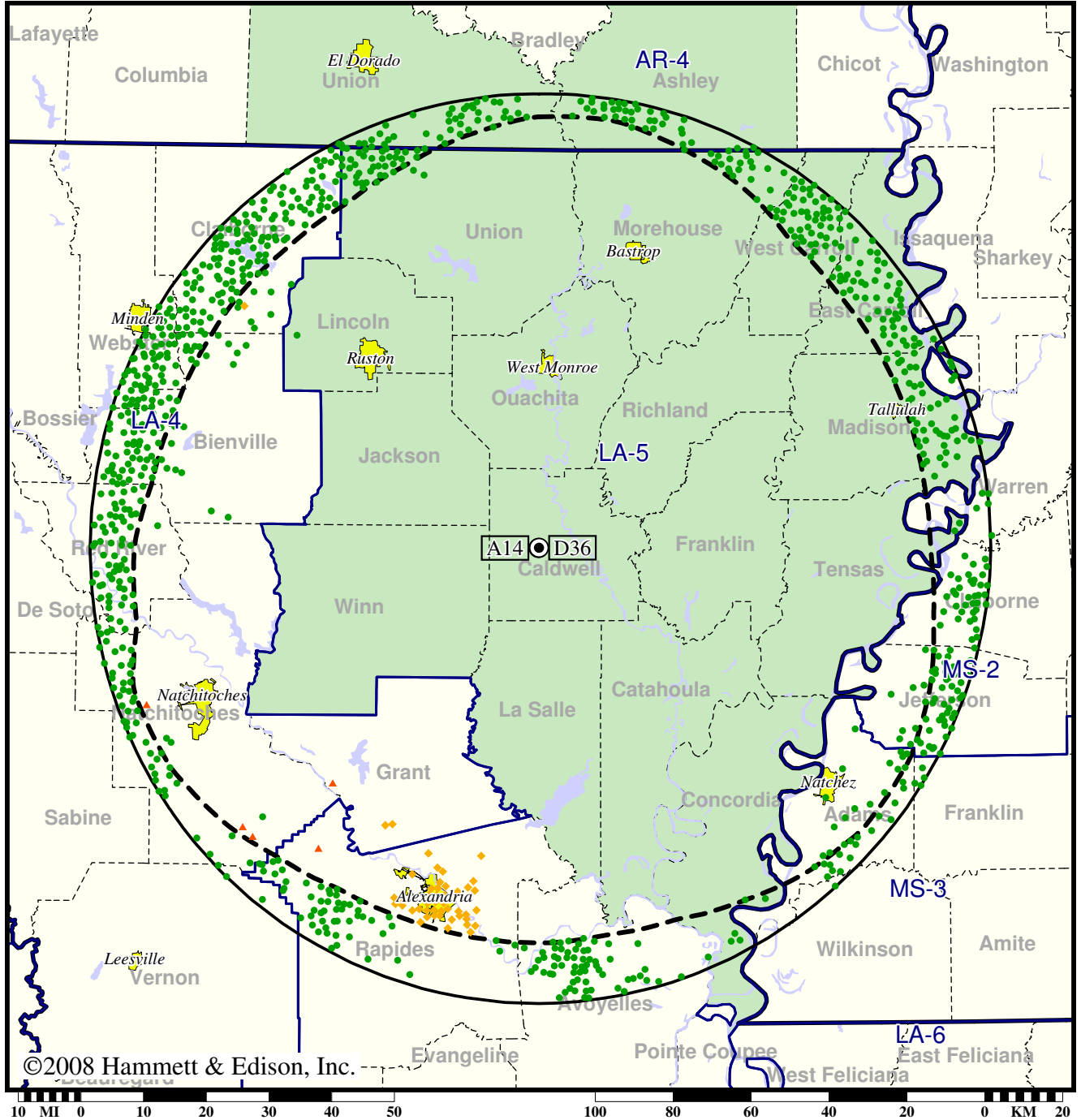
● Coverage gained after DTV transition
(no symbol) No change in coverage

TV Station KARD • Analog Channel 14, DTV Channel 36 • West Monroe, LA

Expected Change In Coverage: Post-Transition Appendix B Facility

Appendix B (solid): 1000 kW ERP at 521 m HAAT, Network: Fox
vs. Analog (dashed): 5000 kW ERP at 572 m HAAT, Network: Fox

Market: Monroe, LA-EI Dorado, AR

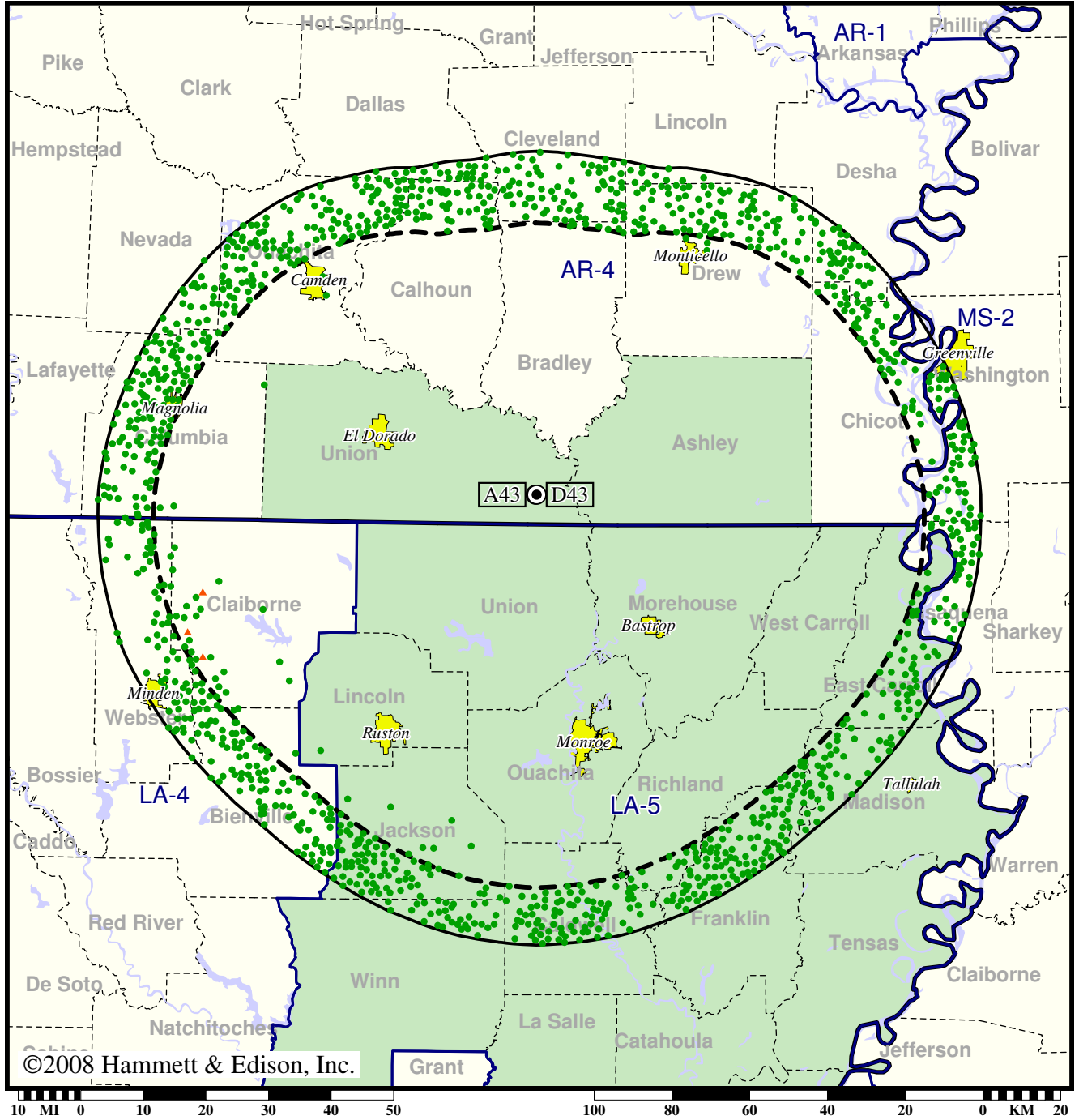


TV Station KEJB • Analog Channel 43, DTV Channel 43 • El Dorado, AR

Expected Change In Coverage: Granted Construction Permit

CP (solid): 1000 kW ERP at 528 m HAAT
vs. Analog (dashed): 5000 kW ERP at 530 m HAAT

Market: Monroe, LA-EI Dorado, AR



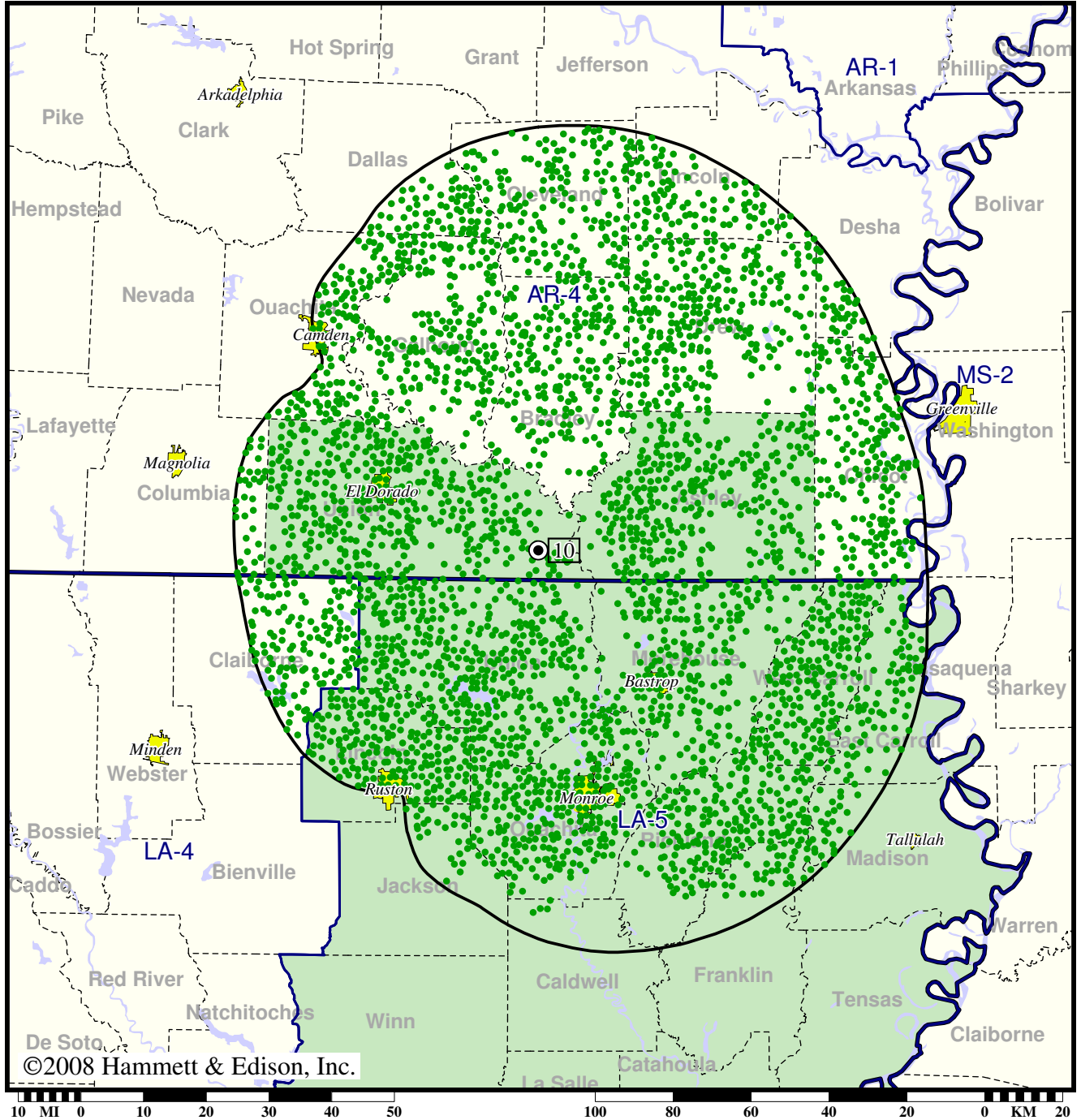
- Coverage gained after DTV transition
- (no symbol) No change in coverage
- ▲ Coverage lost after DTV transition

DTV Station KETZ • Channel 10 • El Dorado, AR

Expected Change In Coverage: Granted Construction Permit

CP (solid): 10.0 kW ERP at 538 m HAAT, Network: PBS

Market: Monroe, LA-El Dorado, AR



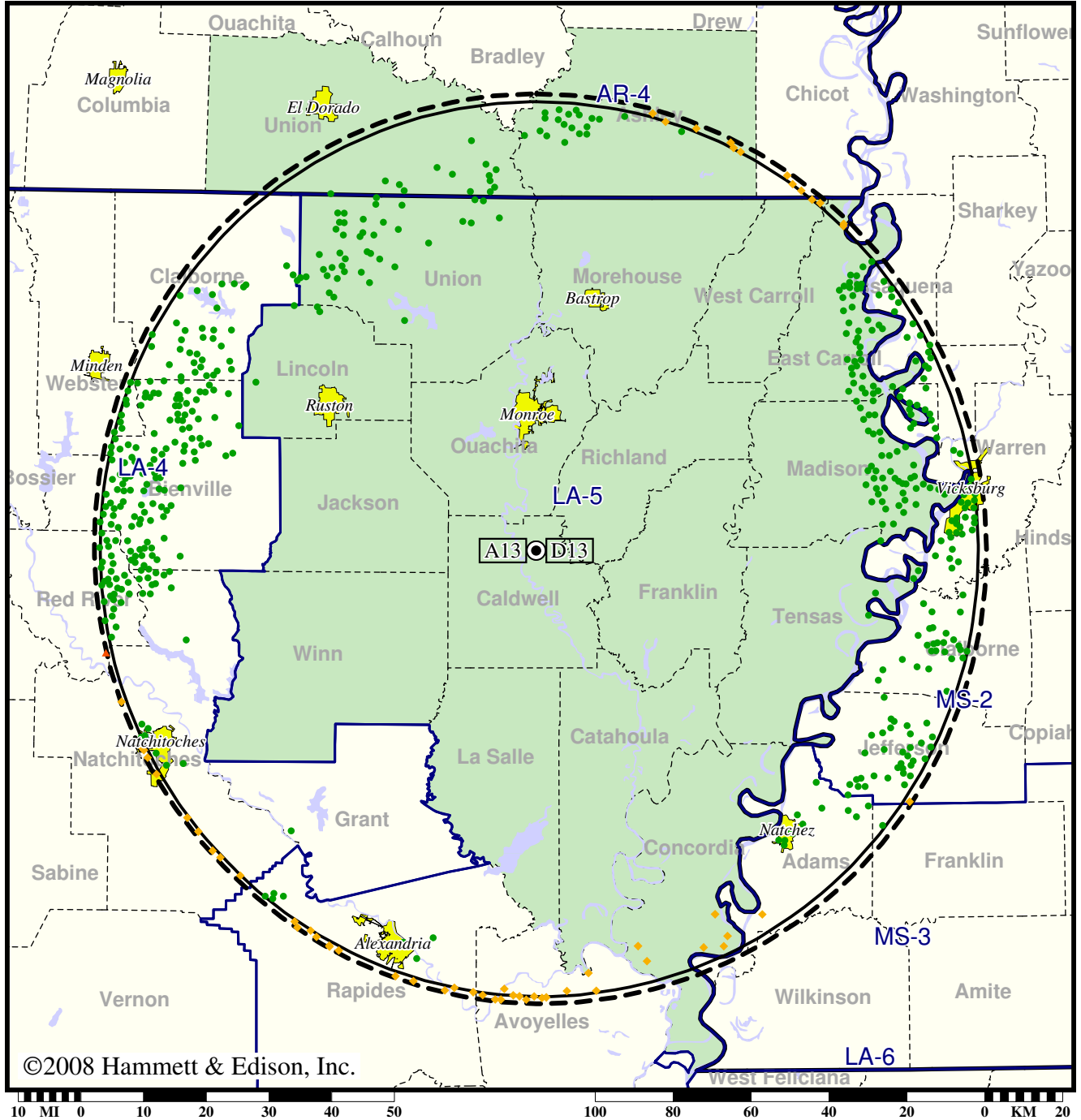
- Coverage gained after DTV transition
- (no symbol) No change in coverage

Station KLTM-TV • Analog Channel 13, DTV Channel 13 • Monroe, LA

Expected Change In Coverage: Granted Construction Permit

CP (solid): 17.2 kW ERP at 544 m HAAT, Network: PBS
vs. Analog (dashed): 316 kW ERP at 544 m HAAT, Network: PBS

Market: Monroe, LA-EI Dorado, AR



©2008 Hammett & Edison, Inc.

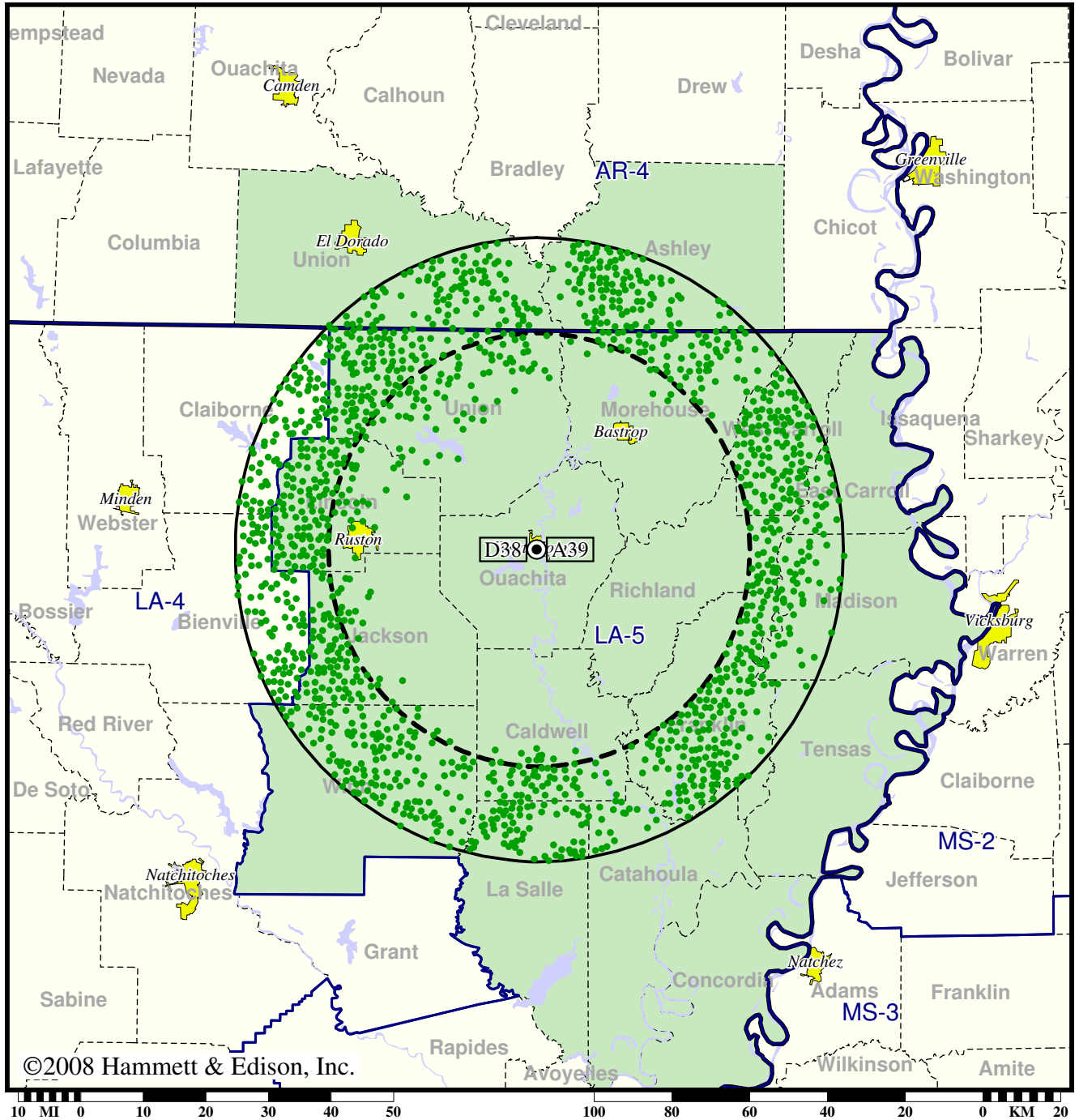
- Coverage gained after DTV transition
- (no symbol) No change in coverage
- ◆ Coverage lost but still served by same network
- ▲ Coverage lost and no other service by same network

Station KMCT-TV • Analog Channel 39, DTV Channel 38 • West Monroe, LA

Expected Change In Coverage: Post-Transition Appendix B Facility

Appendix B (solid): 1000 kW ERP at 154 m HAAT
vs. Analog (dashed): 562 kW ERP at 152 m HAAT

Market: Monroe, LA-EI Dorado, AR



©2008 Hammett & Edison, Inc.

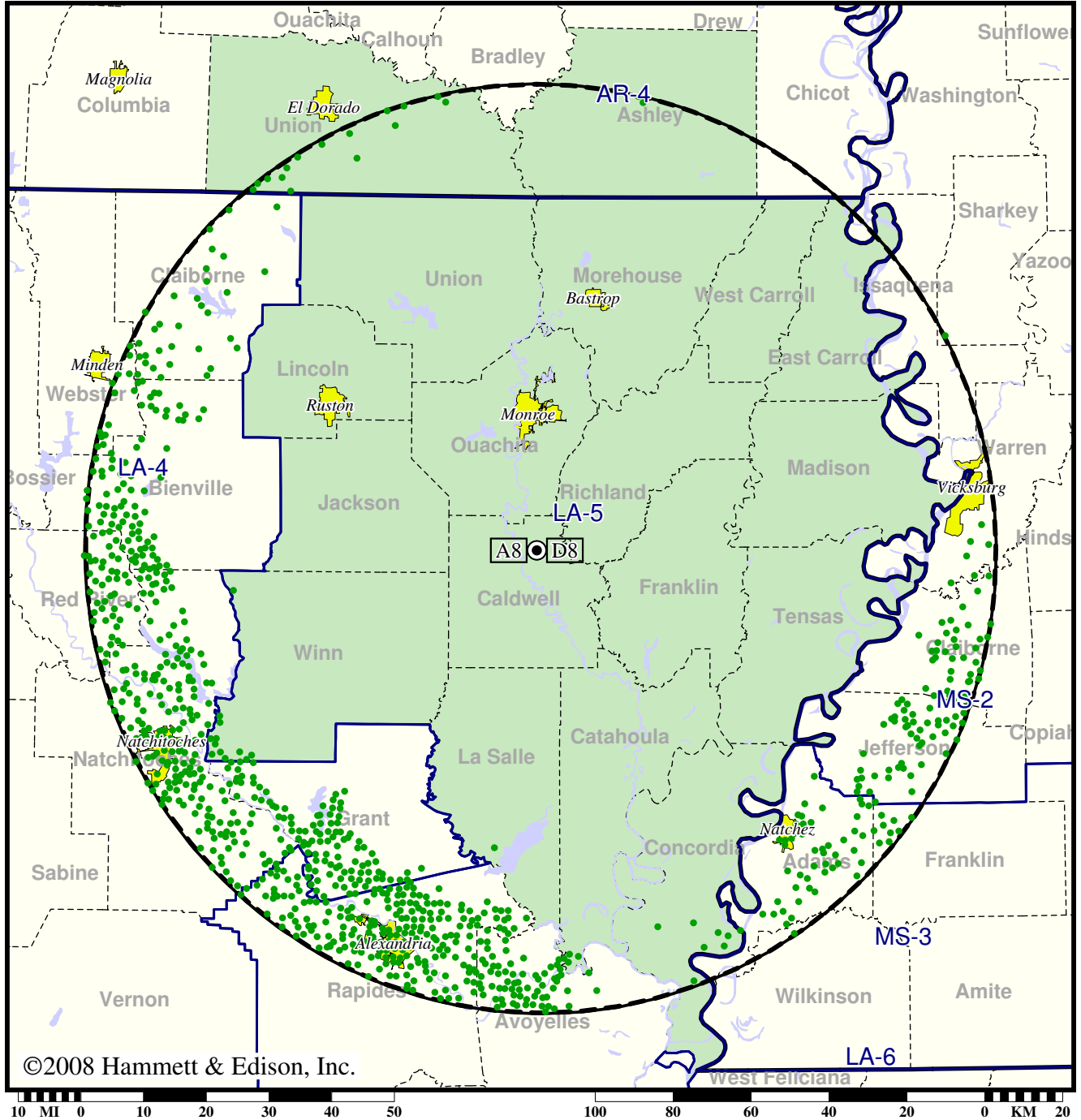
- Coverage gained after DTV transition
- (no symbol) No change in coverage

Station KNOE-TV • Analog Channel 8, DTV Channel 8 • Monroe, LA

Expected Change In Coverage: Granted Construction Permit

CP (solid): 22.3 kW ERP at 576 m HAAT
vs. Analog (dashed): 316 kW ERP at 576 m HAAT

Market: Monroe, LA-EI Dorado, AR



©2008 Hammett & Edison, Inc.

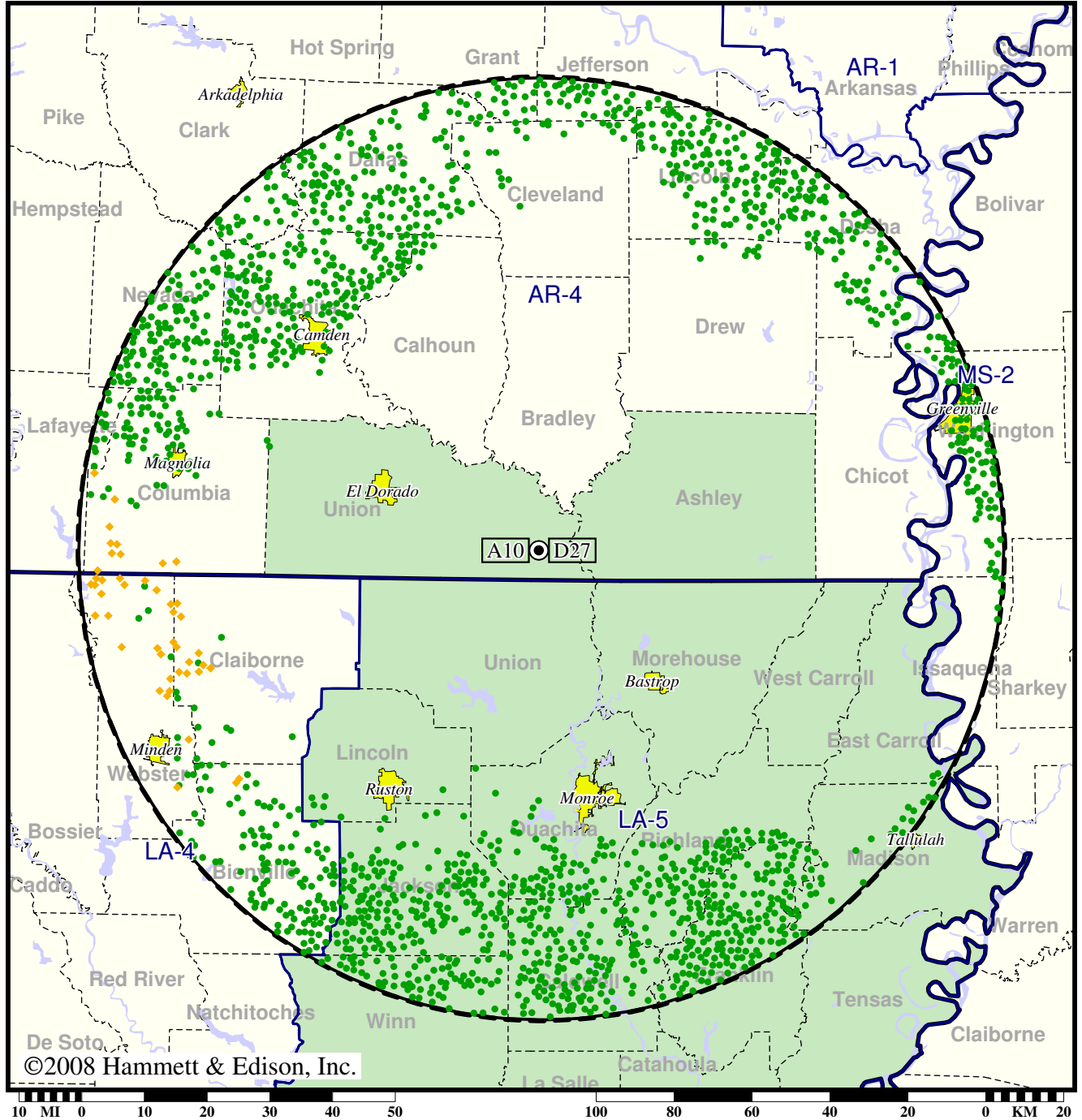
- Coverage gained after DTV transition
- (no symbol) No change in coverage

TV Station KTVE • Analog Channel 10, DTV Channel 27 • El Dorado, AR

Expected Change In Coverage: Licensed Operation

Licensed (solid): 823 kW ERP at 582 m HAAT, Network: NBC
vs. Analog (dashed): 316 kW ERP at 605 m HAAT, Network: NBC

Market: Monroe, LA-EI Dorado, AR



©2008 Hammett & Edison, Inc.

- Coverage gained after DTV transition
- (no symbol) No change in coverage
- ◆ Coverage lost but still served by same network