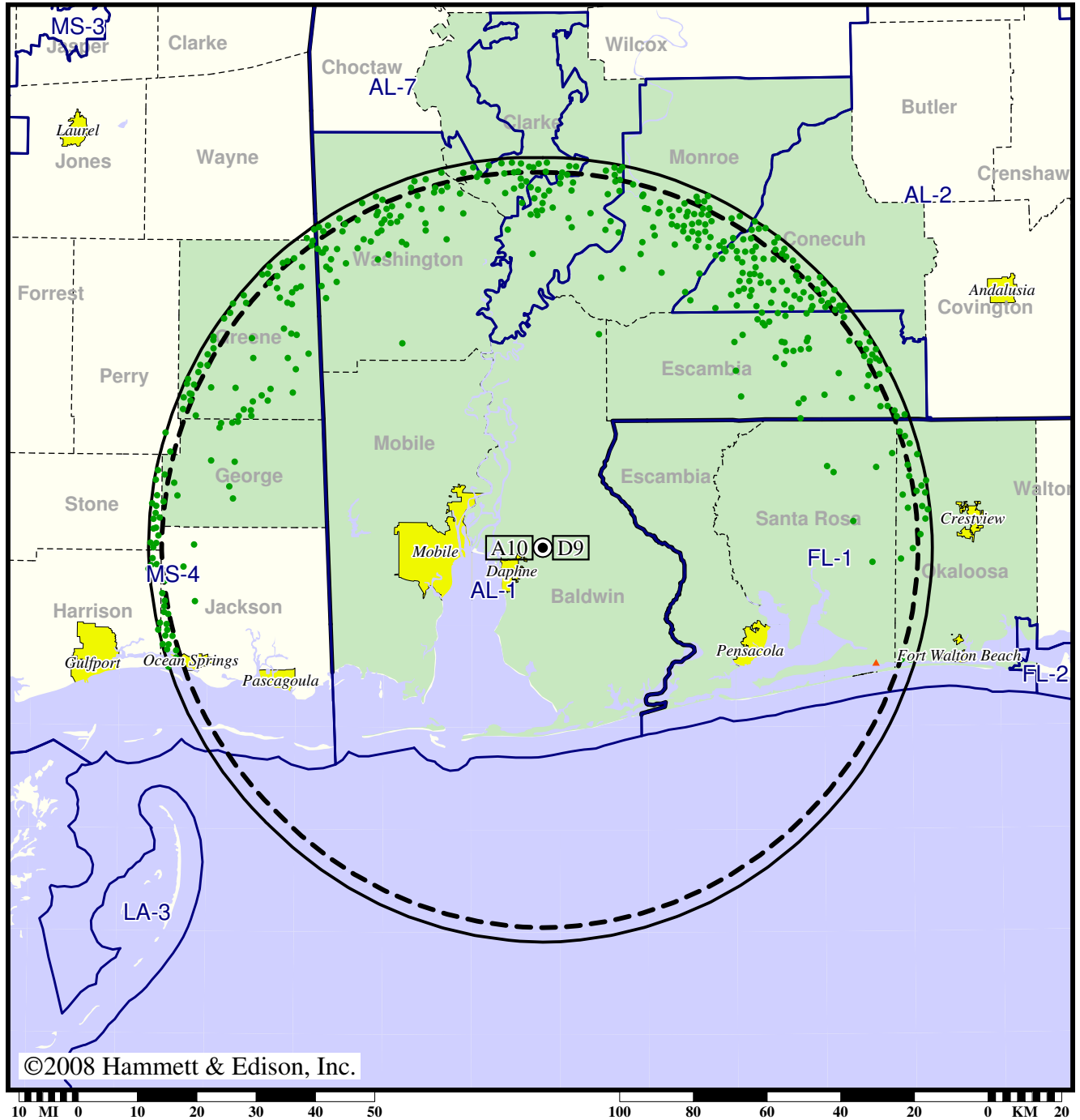


Station WALA-TV • Analog Channel 10, DTV Channel 9 • Mobile, AL

Expected Change In Coverage: Licensed Operation

Licensed (solid): 29.0 kW ERP at 381 m HAAT, Network: Fox
vs. Analog (dashed): 316 kW ERP at 381 m HAAT, Network: Fox

Market: Mobile, AL-Pensacola, FL



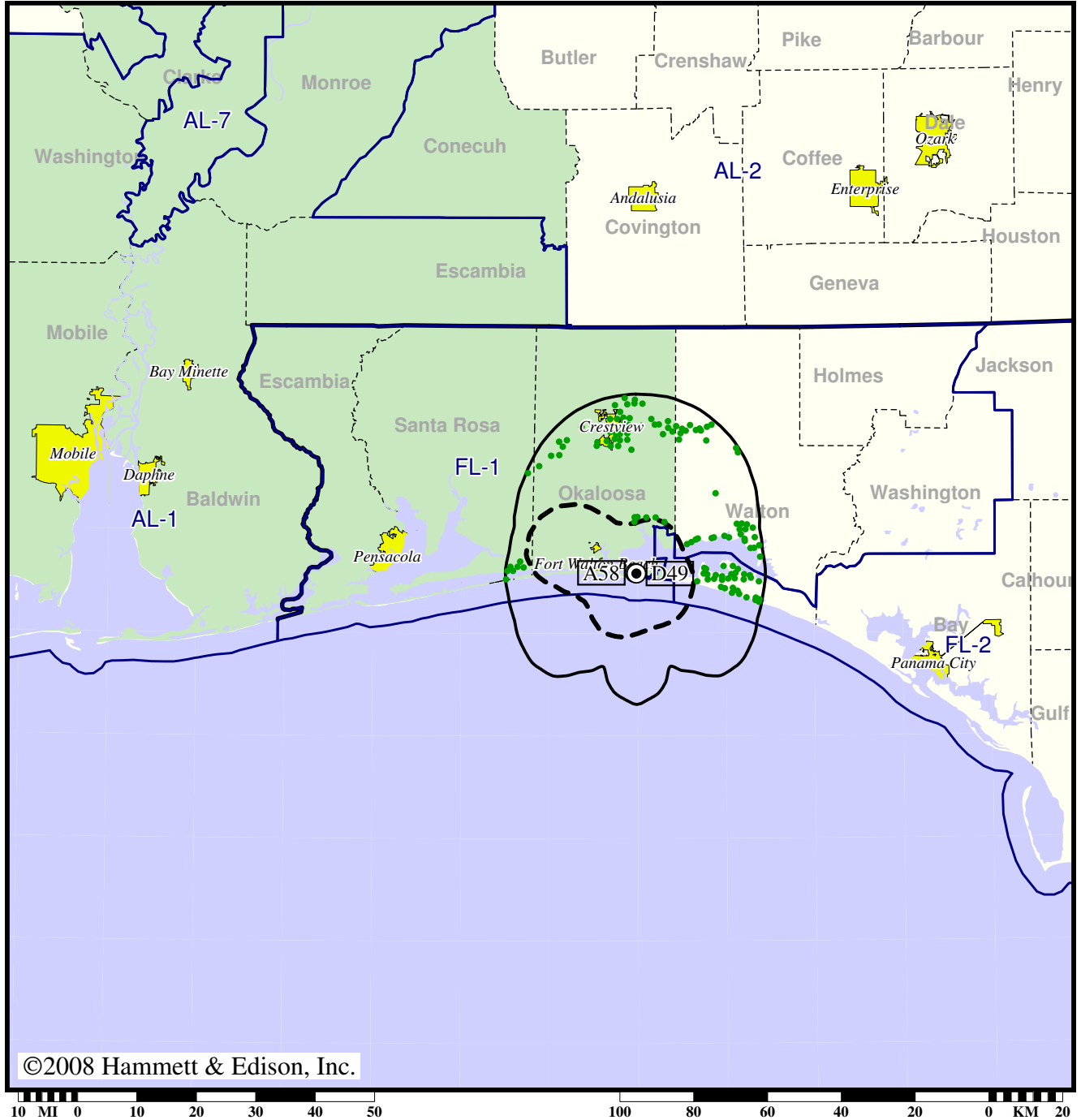
- Coverage gained after DTV transition
- (no symbol) No change in coverage
- ▲ Coverage lost after DTV transition

TV Station WAWD • Analog Channel 58, DTV Channel 49 • Fort Walton Beach, FL

Expected Change In Coverage: Post-Transition Appendix B Facility

Appendix B (solid): 50.0 kW ERP at 59 m HAAT
vs. Analog (dashed): 138 kW ERP at 54 m HAAT

Market: Mobile, AL-Pensacola, FL



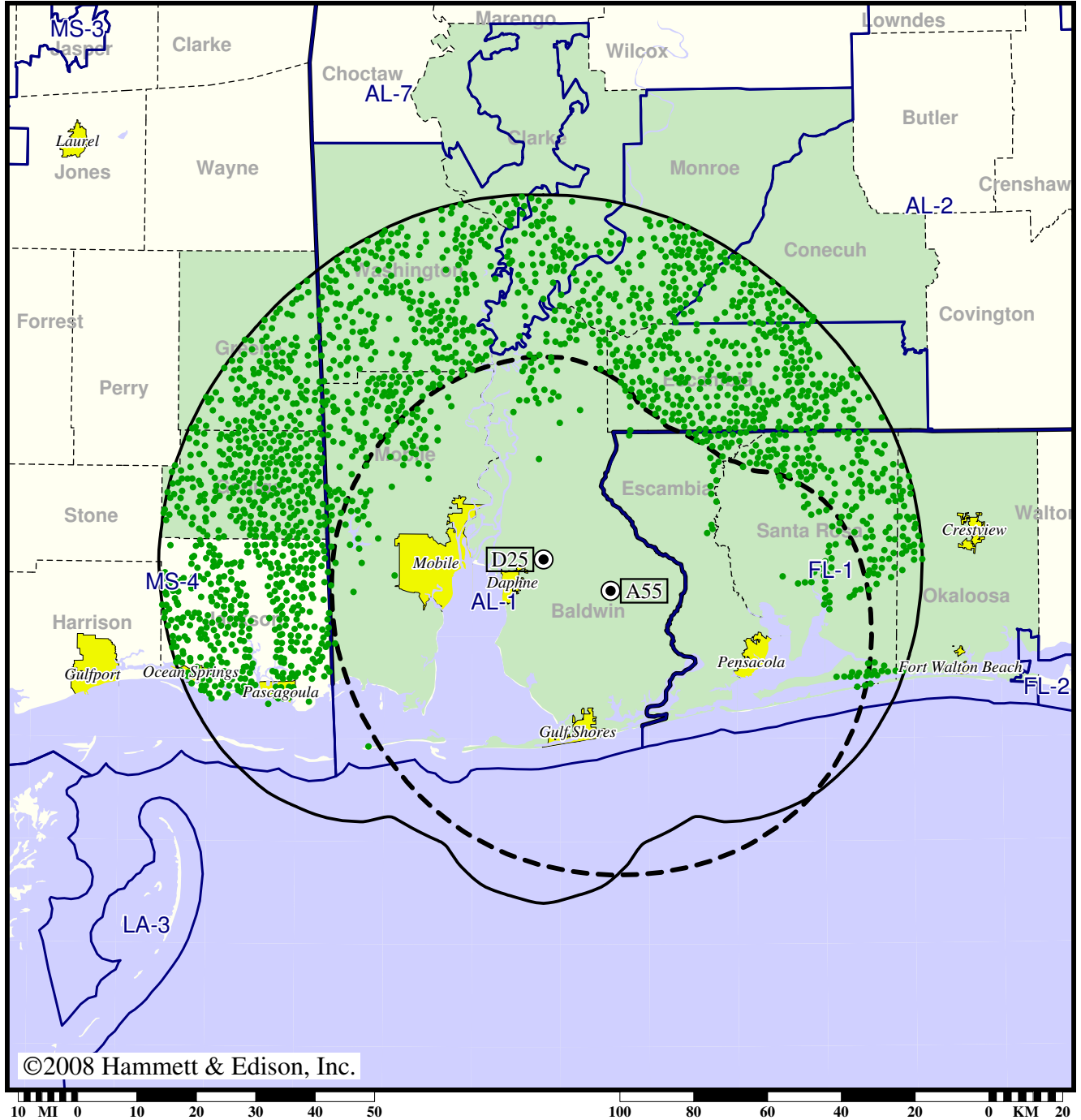
● Coverage gained after DTV transition
(no symbol) No change in coverage

TV Station WBPG • Analog Channel 55, DTV Channel 25 • Gulf Shores, AL

Expected Change In Coverage: Granted Construction Permit

CP (solid): 1000 kW ERP at 353 m HAAT
vs. Analog (dashed): 3750 kW ERP at 308 m HAAT

Market: Mobile, AL-Pensacola, FL



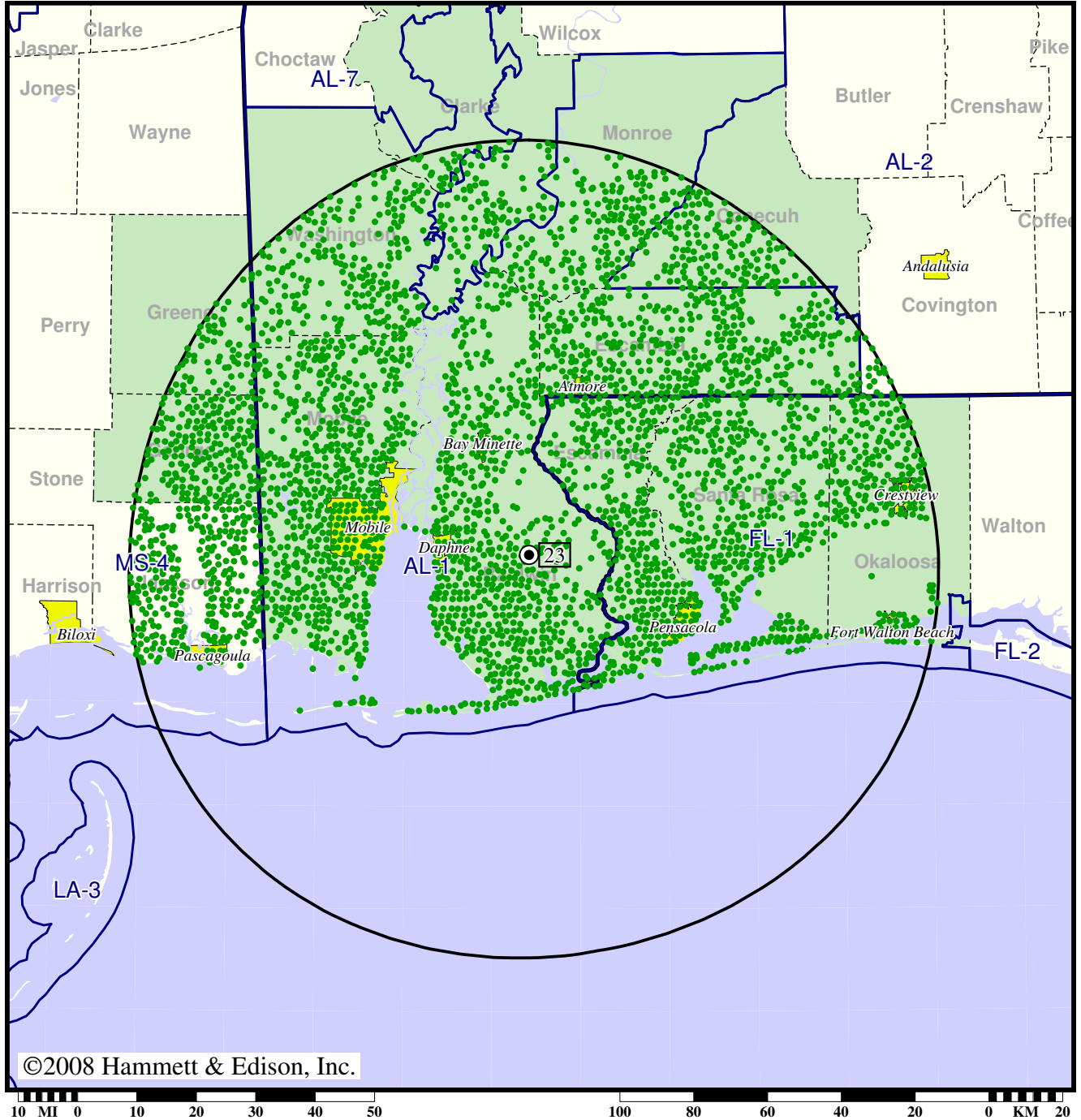
- Coverage gained after DTV transition
- (no symbol) No change in coverage

DTV Station WDPM-DT • Channel 23 • Mobile, AL

Expected Change In Coverage: Post-Transition Appendix B Facility

Appendix B (solid): 337 kW ERP at 574 m HAAT

Market: Mobile, AL-Pensacola, FL



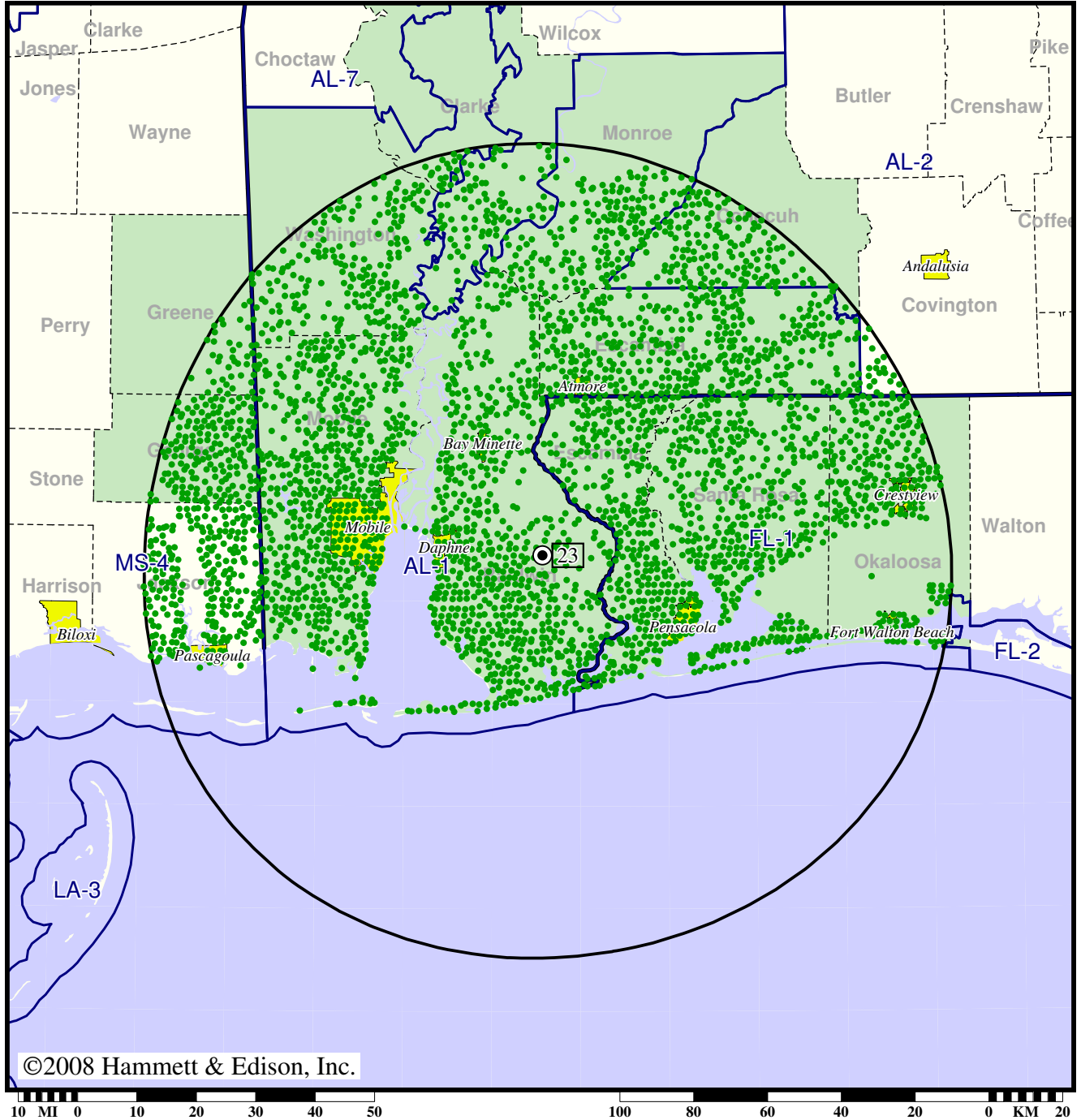
- Coverage gained after DTV transition
- (no symbol) No change in coverage

DTV Station WDPM-DT • Channel 23 • Mobile, AL

Expected Change In Coverage: Granted Construction Permit

CP (solid): 435 kW ERP at 534 m HAAT

Market: Mobile, AL-Pensacola, FL



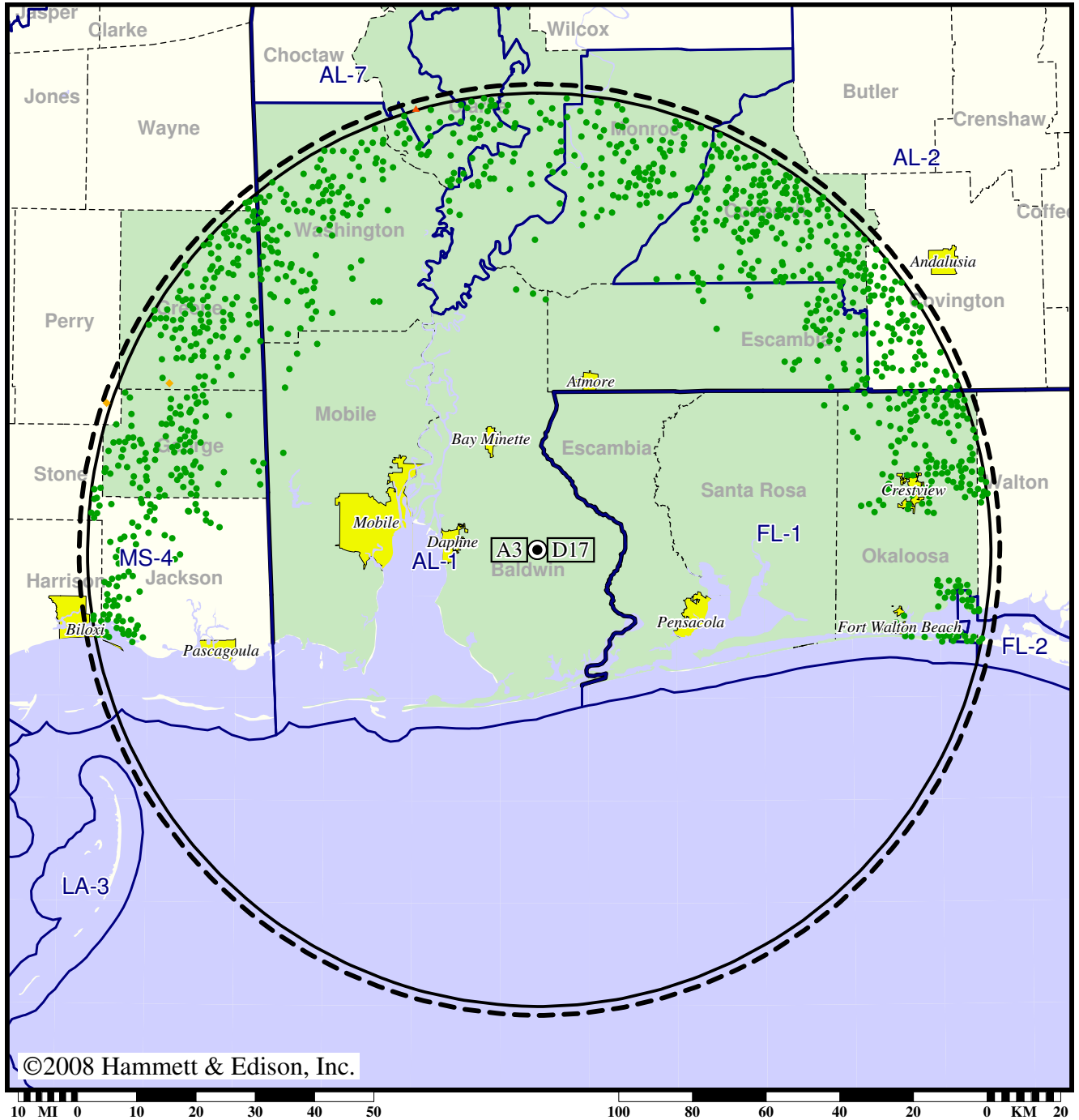
- Coverage gained after DTV transition
- (no symbol) No change in coverage

Station WEAR-TV • Analog Channel 3, DTV Channel 17 • Pensacola, FL

Expected Change In Coverage: Licensed Operation

Licensed (solid): 1000 kW ERP at 579 m HAAT, Network: ABC
 vs. Analog (dashed): 100 kW ERP at 575 m HAAT, Network: ABC

Market: Mobile, AL-Pensacola, FL

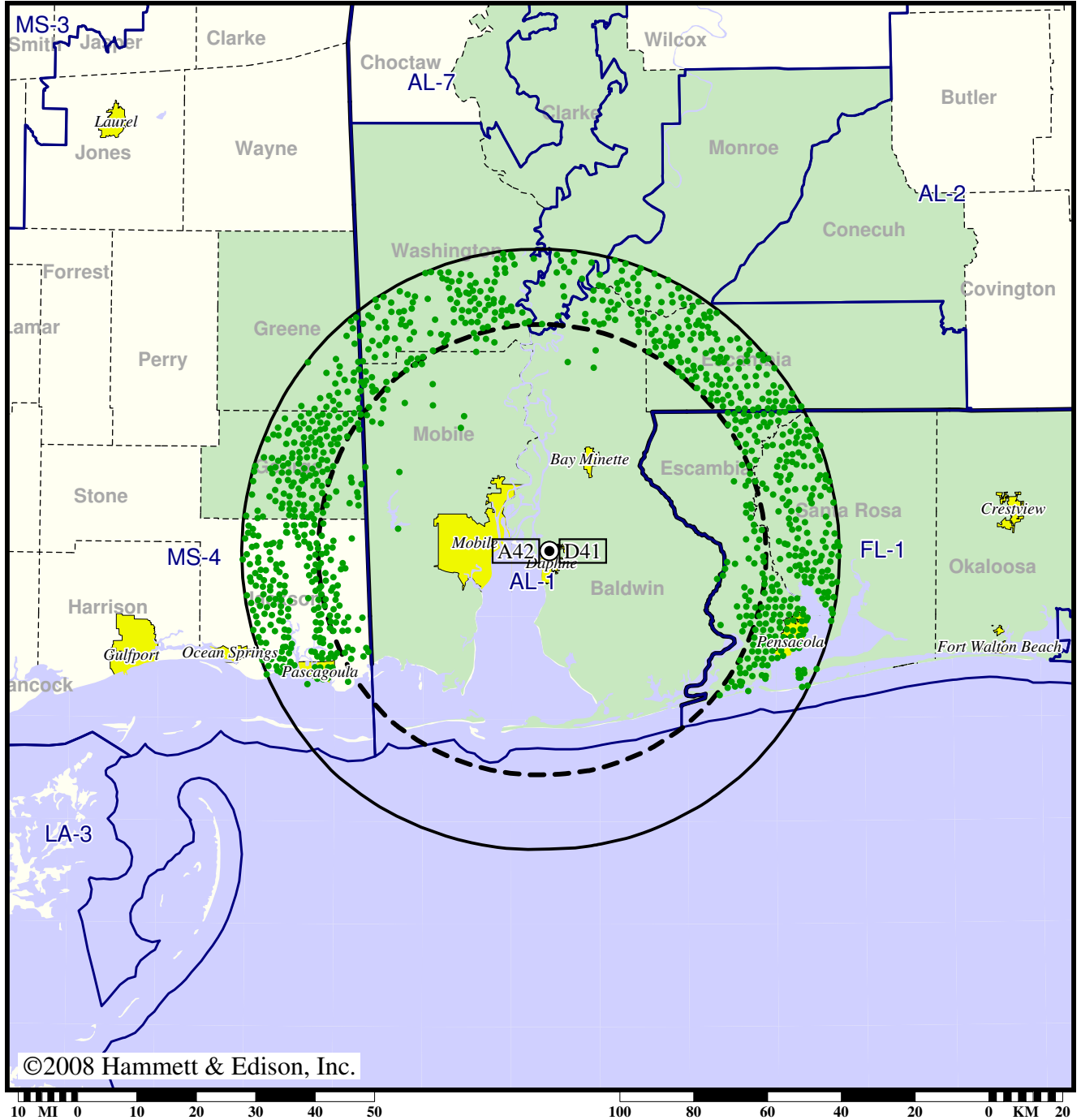


TV Station WEIQ • Analog Channel 42, DTV Channel 41 • Mobile, AL

Expected Change In Coverage: Granted Construction Permit

CP (solid): 1000 kW ERP at 185 m HAAT, Network: PBS
vs. Analog (dashed): 1170 kW ERP at 183 m HAAT, Network: PBS

Market: Mobile, AL-Pensacola, FL



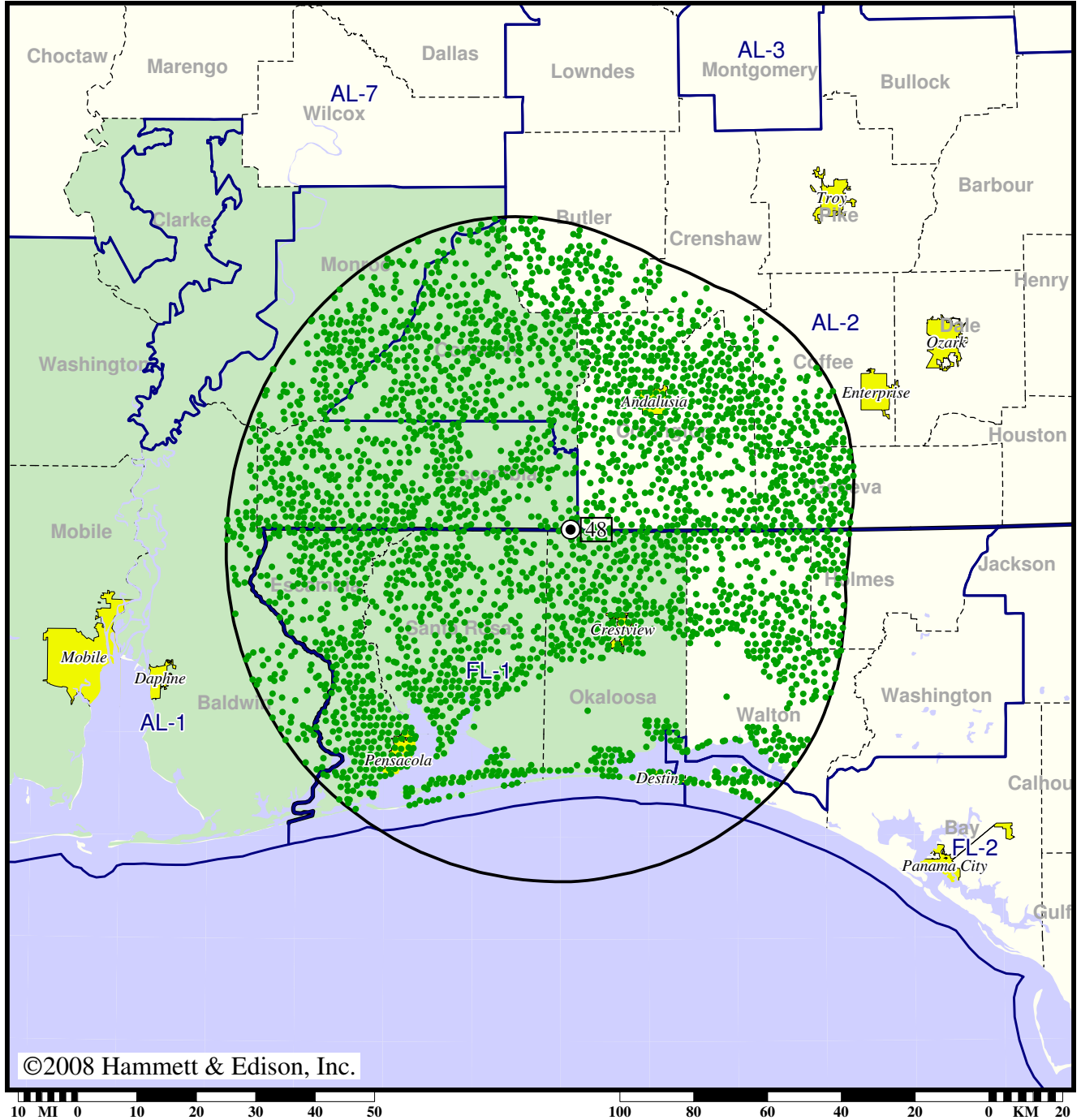
- Coverage gained after DTV transition
- (no symbol) No change in coverage

DTV Station WFBD • Channel 48 • Destin, FL

Expected Change In Coverage: Licensed Operation

Licensed (solid): 1000 kW ERP at 318 m HAAT

Market: Mobile, AL-Pensacola, FL



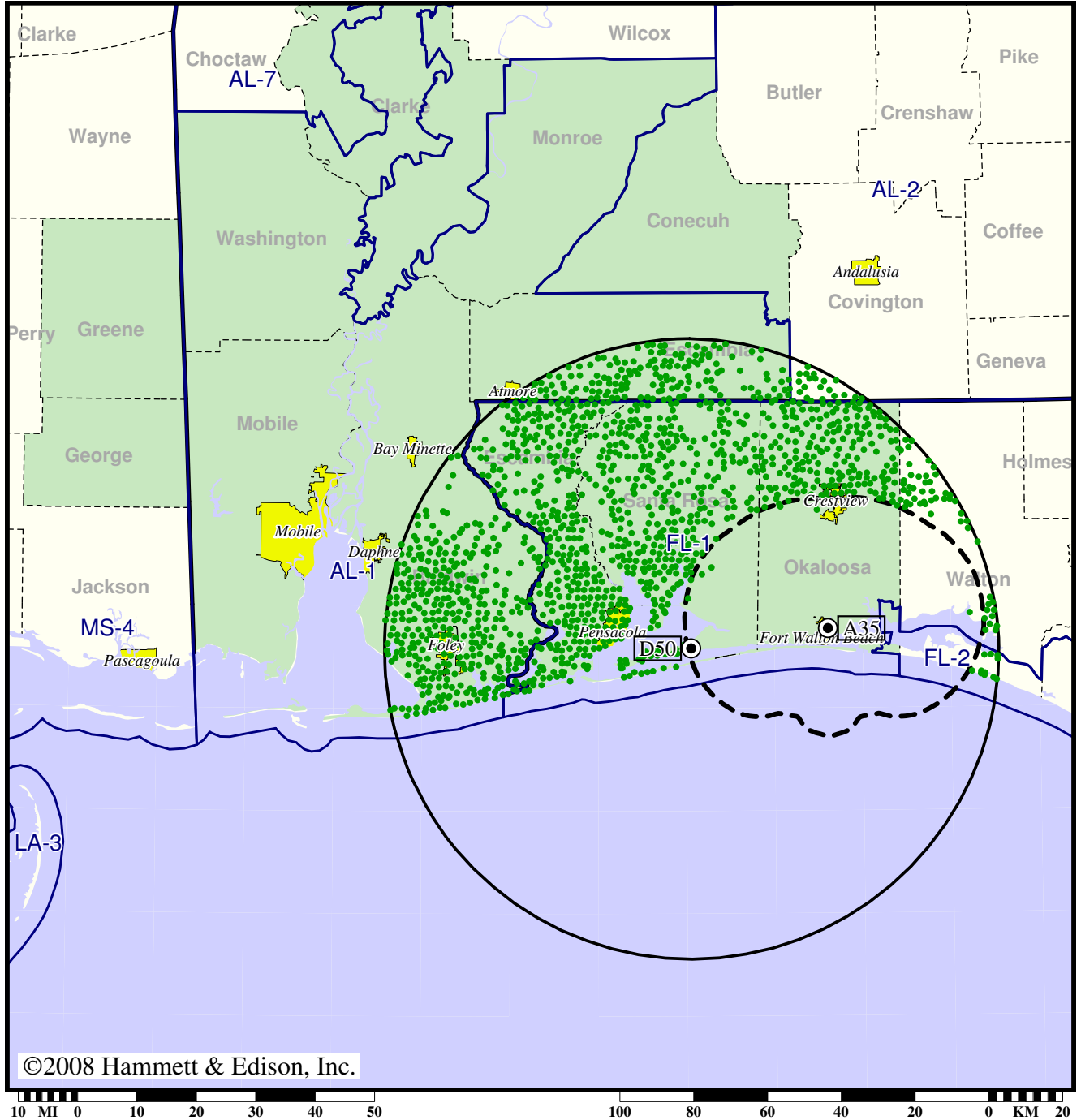
- Coverage gained after DTV transition
- (no symbol) No change in coverage

TV Station WFGX • Analog Channel 35, DTV Channel 50 • Fort Walton Beach, FL

Expected Change In Coverage: Post-Transition Appendix B Facility

Appendix B (solid): 1000 kW ERP at 221 m HAAT
vs. Analog (dashed): 509 kW ERP at 60 m HAAT

Market: Mobile, AL-Pensacola, FL



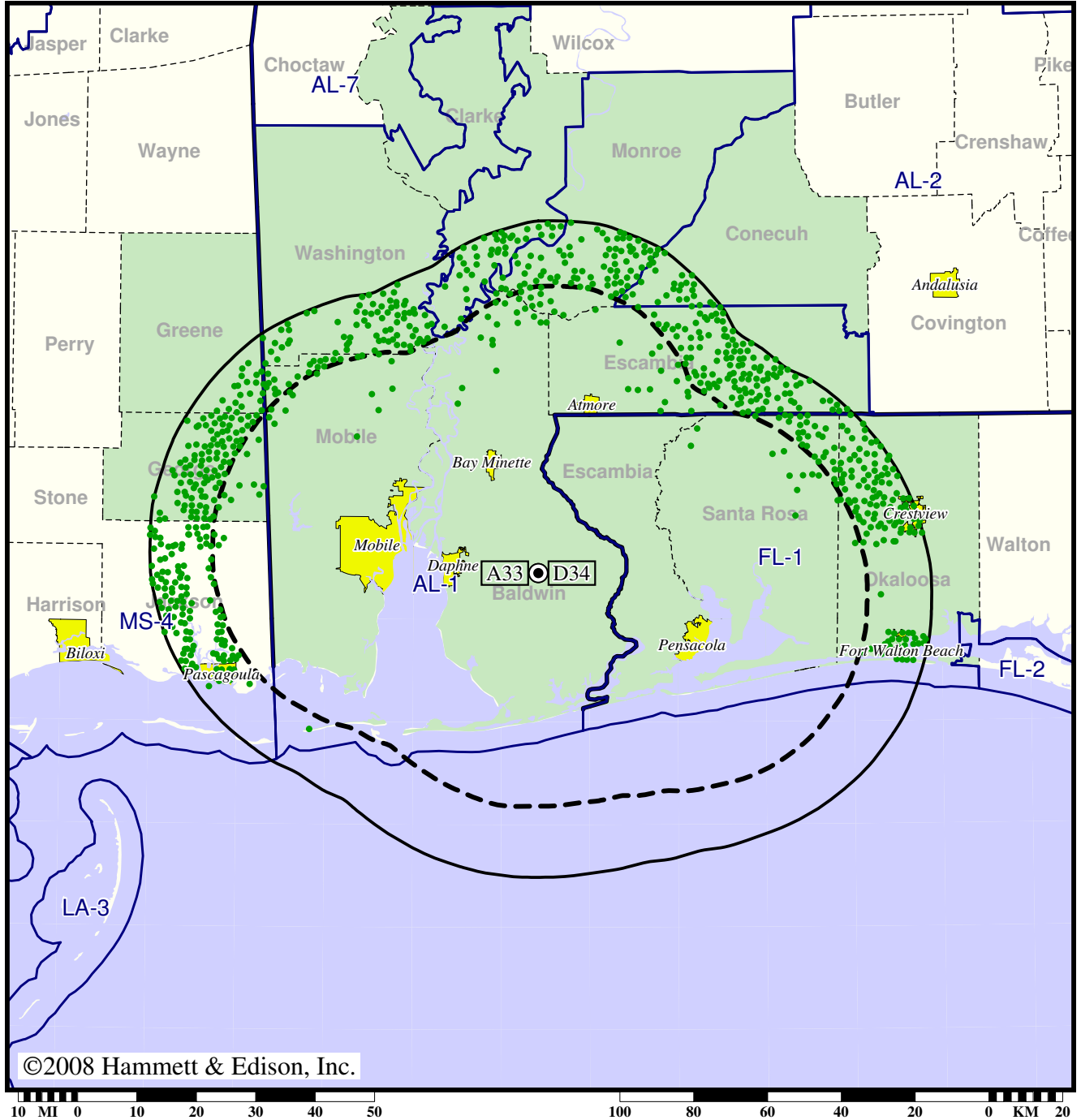
● Coverage gained after DTV transition
(no symbol) No change in coverage

TV Station WHBR • Analog Channel 33, DTV Channel 34 • Pensacola, FL

Expected Change In Coverage: Licensed Operation

Licensed (solid): 1000 kW ERP at 415 m HAAT
vs. Analog (dashed): 3470 kW ERP at 415 m HAAT

Market: Mobile, AL-Pensacola, FL



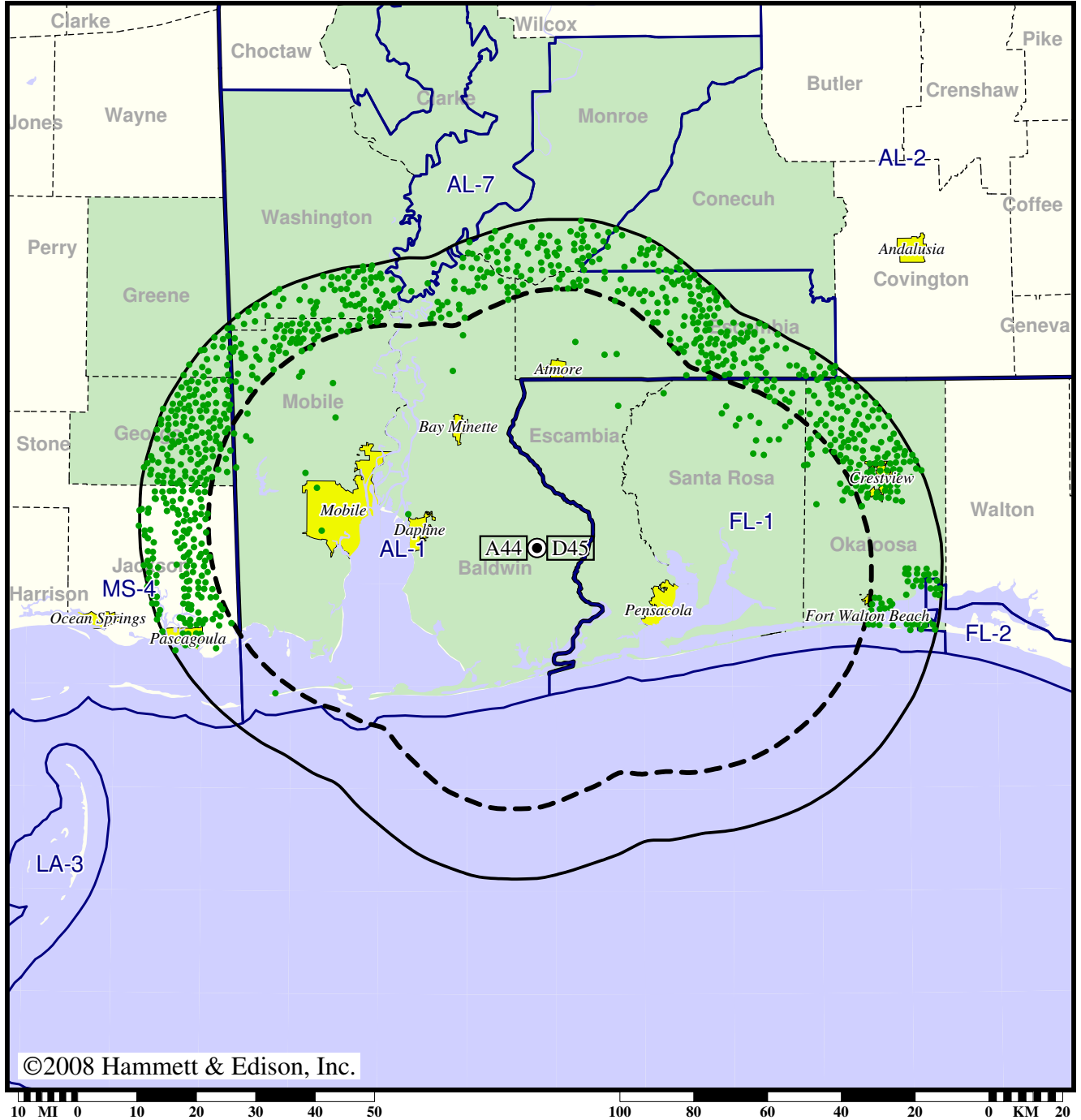
- Coverage gained after DTV transition
- (no symbol) No change in coverage

TV Station WJTC • Analog Channel 44, DTV Channel 45 • Pensacola, FL

Expected Change In Coverage: Licensed Operation

Licensed (solid): 1000 kW ERP at 457 m HAAT
vs. Analog (dashed): 3310 kW ERP at 457 m HAAT

Market: Mobile, AL-Pensacola, FL



©2008 Hammett & Edison, Inc.

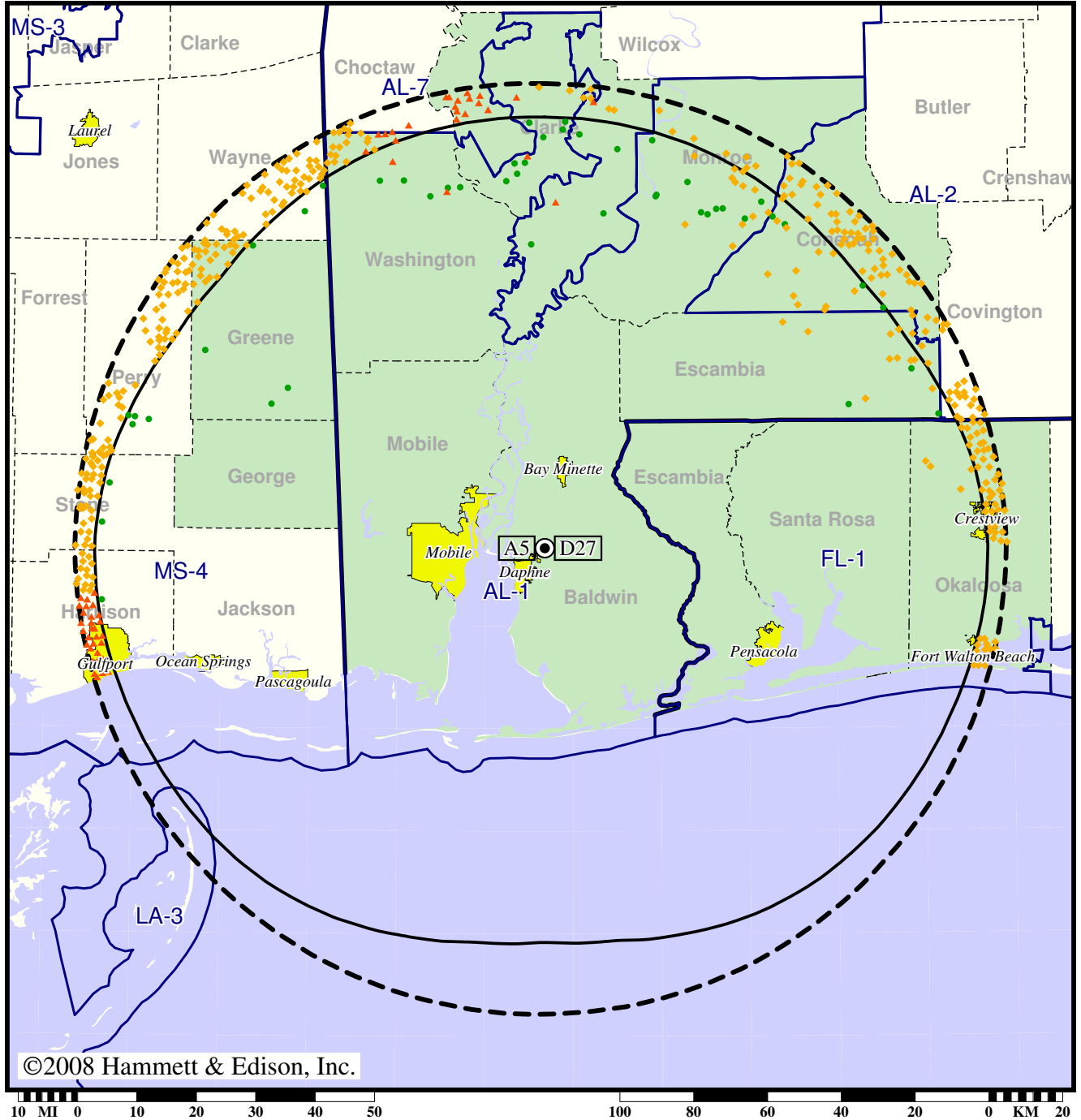
- Coverage gained after DTV transition
- (no symbol) No change in coverage

Station WKRK-TV • Analog Channel 5, DTV Channel 27 • Mobile, AL

Expected Change In Coverage: Granted Construction Permit

CP (solid): 1000 kW ERP at 573 m HAAT, Network: CBS
vs. Analog (dashed): 100 kW ERP at 581 m HAAT, Network: CBS

Market: Mobile, AL-Pensacola, FL



©2008 Hammett & Edison, Inc.

10 MI 0 10 20 30 40 50 100 80 60 40 20 0 KM 20

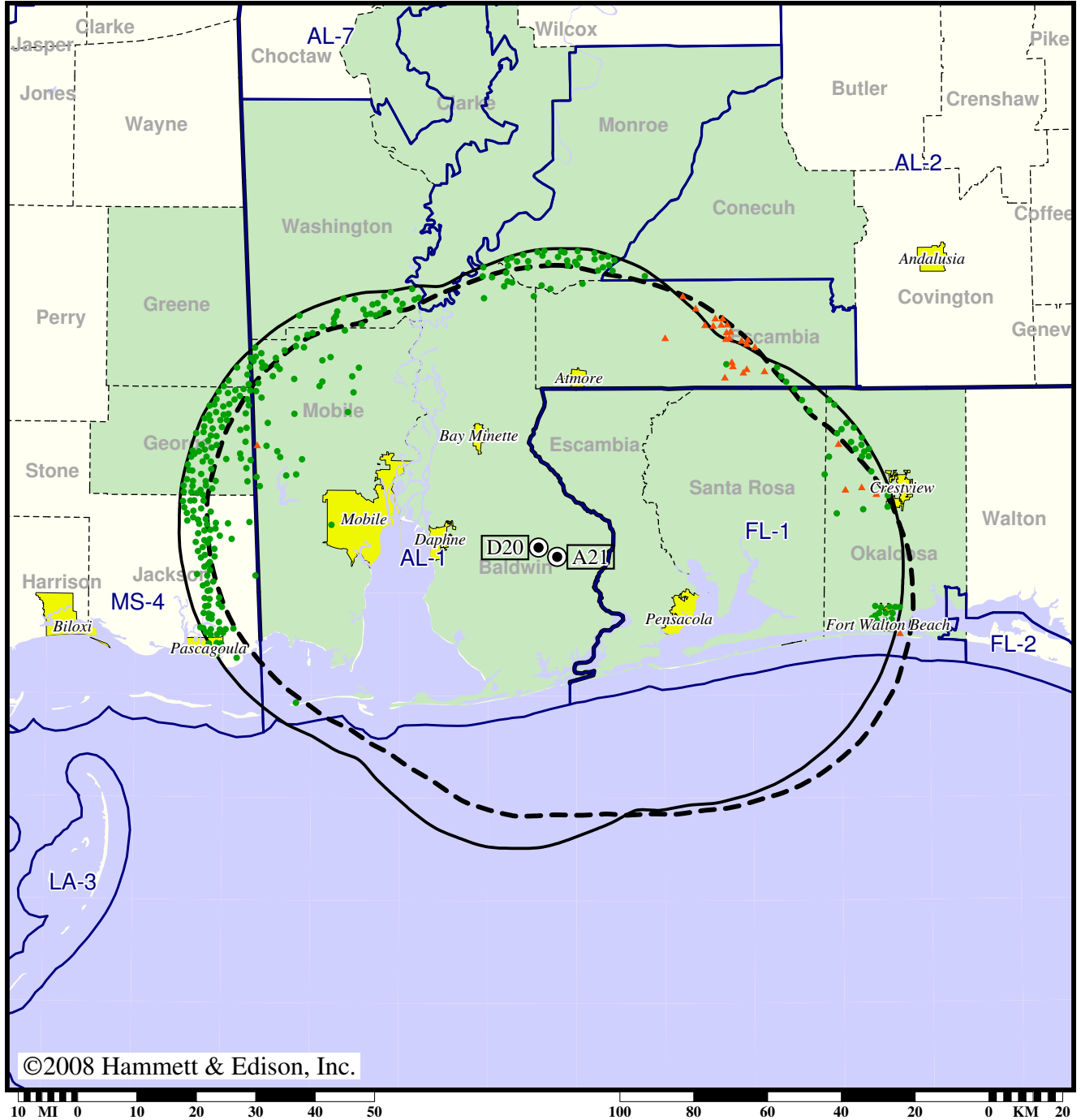
- Coverage gained after DTV transition
- (no symbol) No change in coverage
- ◆ Coverage lost but still served by same network
- ▲ Coverage lost and no other service by same network

Station WMPV-TV • Analog Channel 21, DTV Channel 20 • Mobile, AL

Expected Change In Coverage: Licensed Operation

Licensed (solid): 105 kW ERP at 529 m HAAT
vs. Analog (dashed): 4370 kW ERP at 435 m HAAT

Market: Mobile, AL-Pensacola, FL



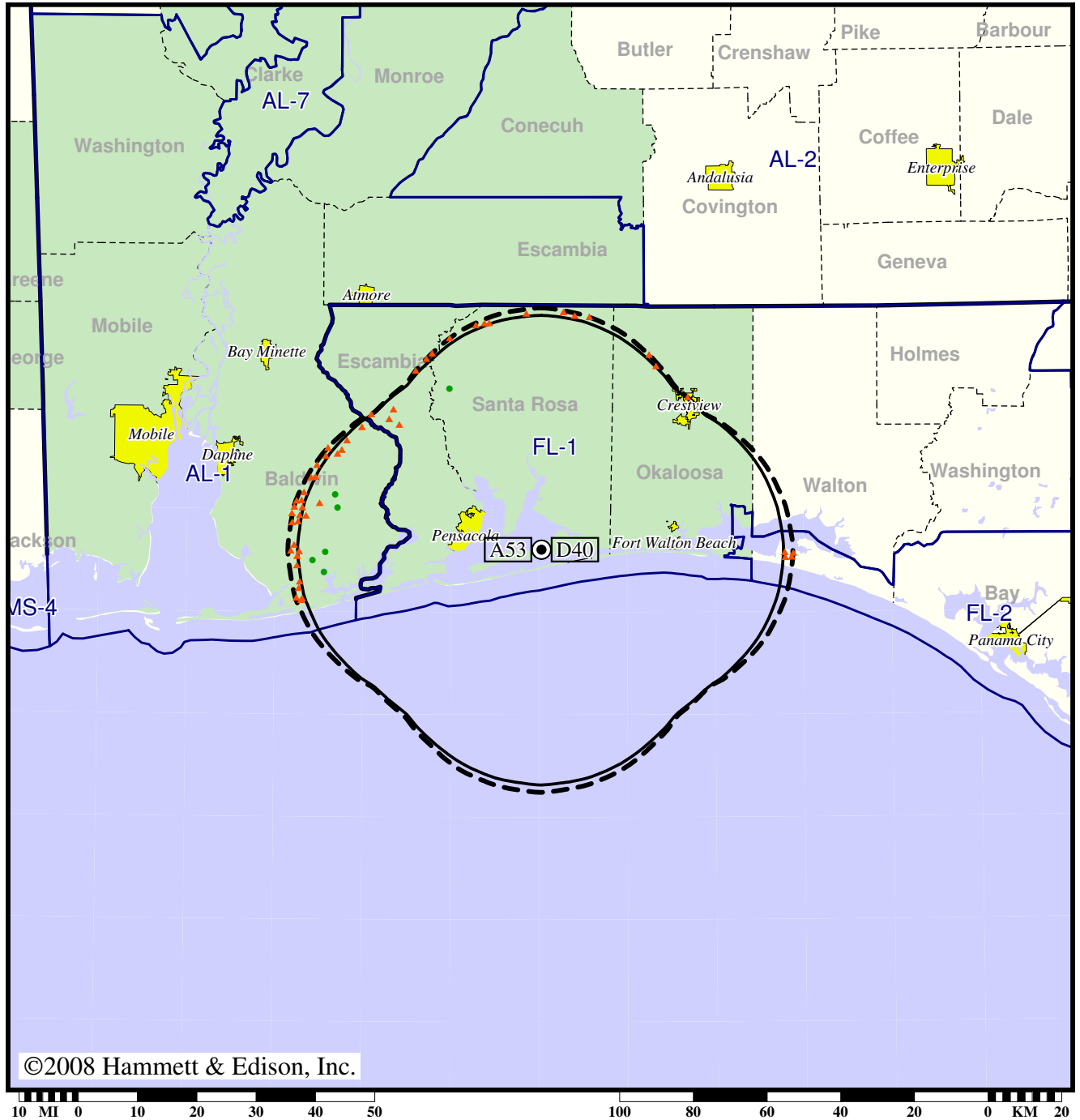
- Coverage gained after DTV transition
- (no symbol) No change in coverage
- ▲ Coverage lost after DTV transition

TV Station WPAN • Analog Channel 53, DTV Channel 40 • Fort Walton Beach, FL

Expected Change In Coverage: Post-Transition Appendix B Facility

Appendix B (solid): 33.5 kW ERP at 219 m HAAT
vs. Analog (dashed): 3090 kW ERP at 219 m HAAT

Market: Mobile, AL-Pensacola, FL



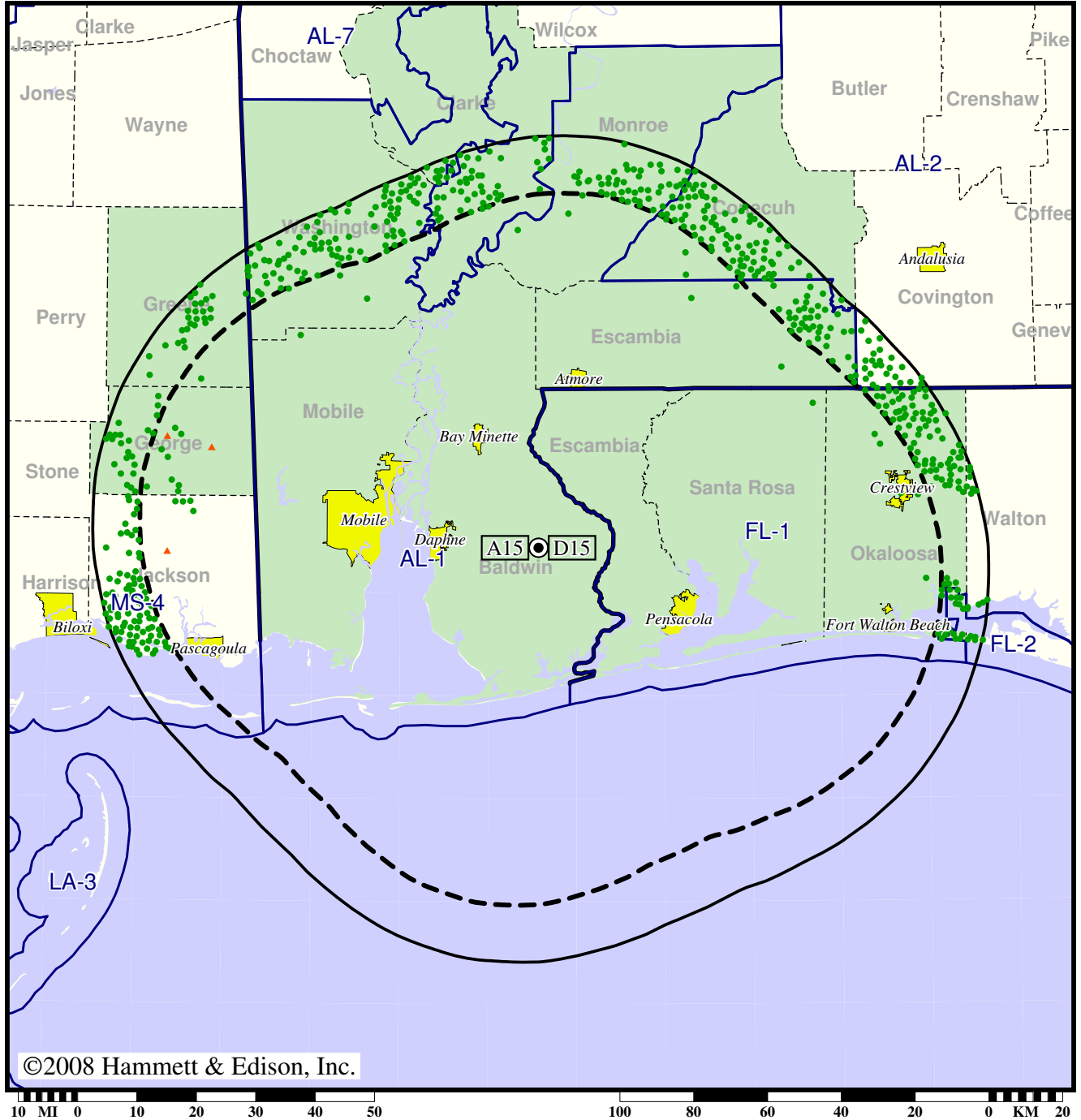
- Coverage gained after DTV transition
- (no symbol) No change in coverage
- ▲ Coverage lost after DTV transition

Station WPMI-TV • Analog Channel 15, DTV Channel 15 • Mobile, AL

Expected Change In Coverage: Granted Construction Permit

CP (solid): 1000 kW ERP at 563 m HAAT, Network: NBC
vs. Analog (dashed): 5000 kW ERP at 563 m HAAT, Network: NBC

Market: Mobile, AL-Pensacola, FL



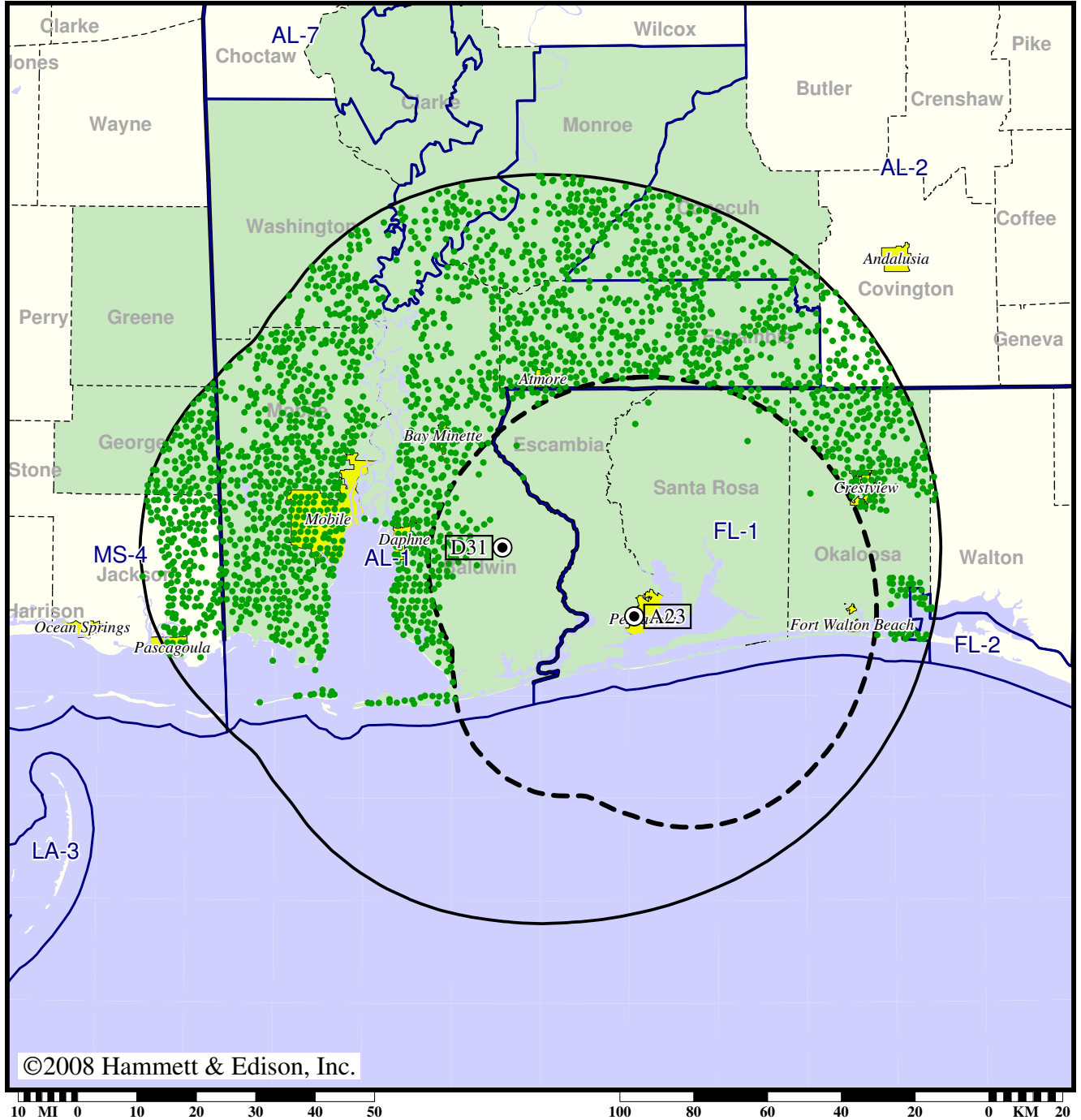
- Coverage gained after DTV transition
- (no symbol) No change in coverage
- ▲ Coverage lost after DTV transition

TV Station WSRE • Analog Channel 23, DTV Channel 31 • Pensacola, FL

Expected Change In Coverage: Licensed Operation

Licensed (solid): 1000 kW ERP at 549 m HAAT, Network: PBS
vs. Analog (dashed): 3020 kW ERP at 149 m HAAT, Network: PBS

Market: Mobile, AL-Pensacola, FL



- Coverage gained after DTV transition
- (no symbol) No change in coverage