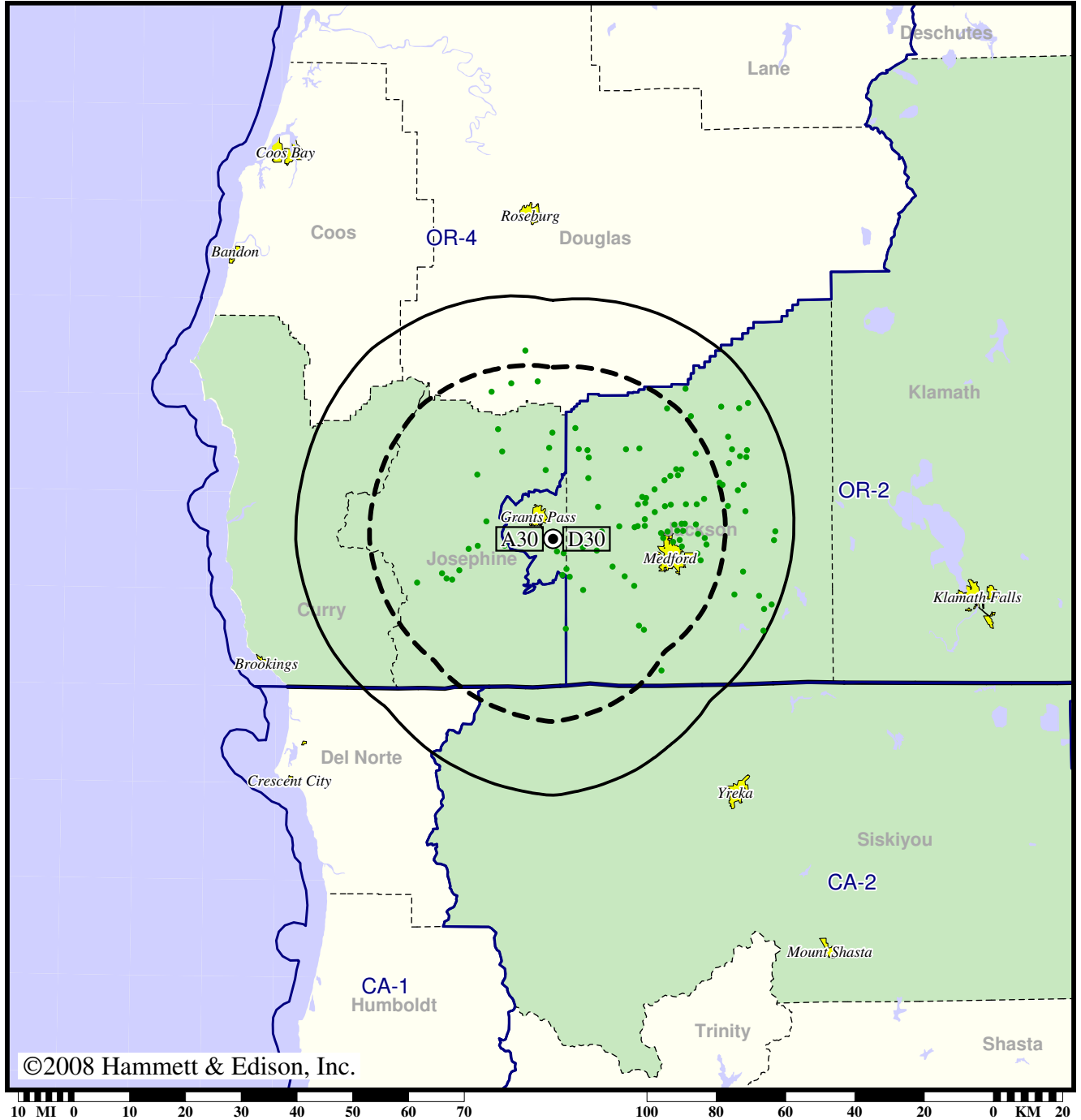


TV Station KBLN • Analog Channel 30, DTV Channel 30 • Grants Pass, OR

Expected Change In Coverage: Granted Construction Permit

CP (solid): 2.00 kW ERP at 654 m HAAT  
vs. Analog (dashed): 9.77 kW ERP at 654 m HAAT

Market: Medford-Klamath Falls, OR



©2008 Hammett & Edison, Inc.

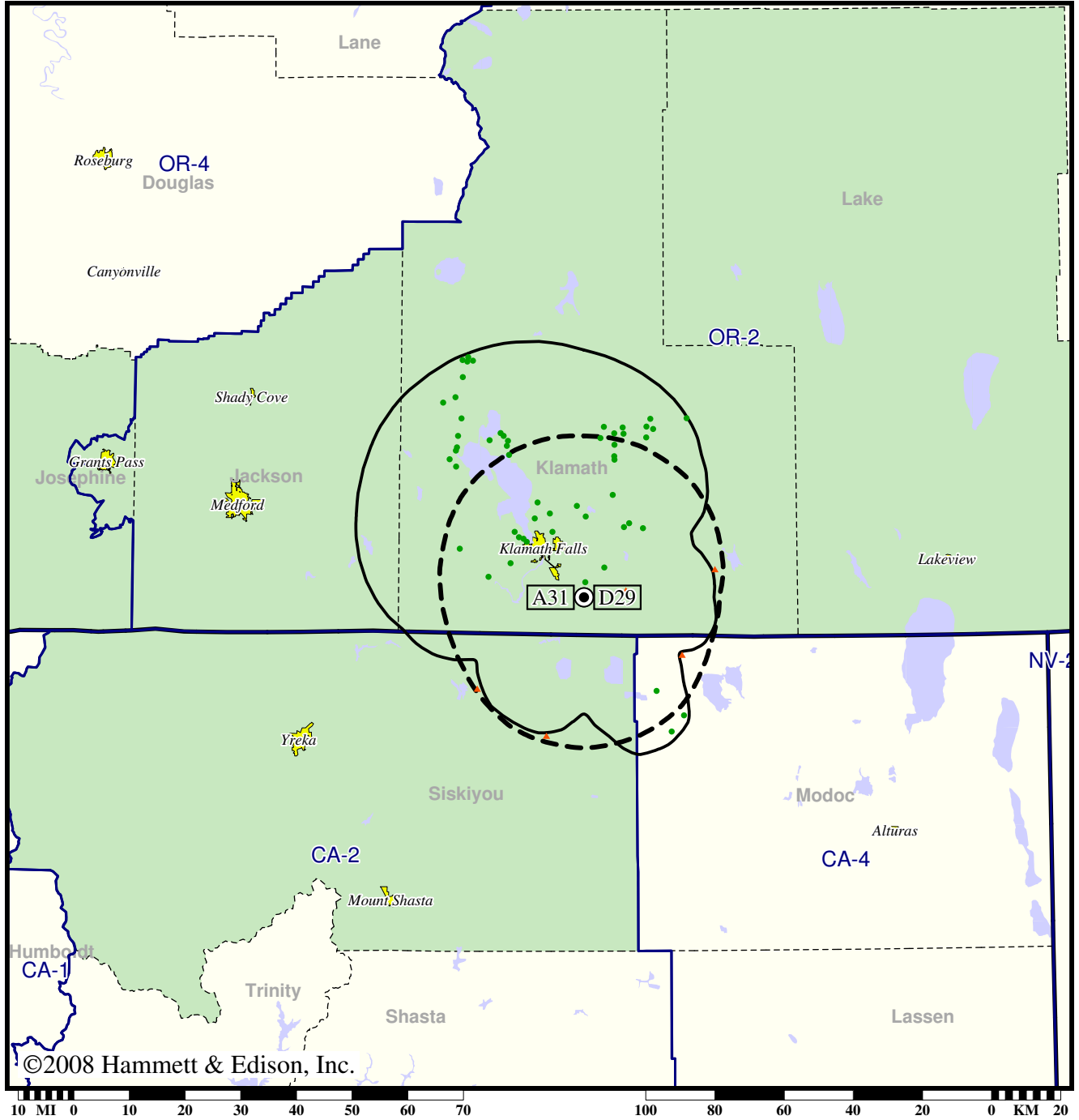
- Coverage gained after DTV transition
- (no symbol) No change in coverage

TV Station KDKF • Analog Channel 31, DTV Channel 29 • Klamath Falls, OR

Expected Change In Coverage: Licensed Operation

Licensed (solid): 5.00 kW ERP at 651 m HAAT, Network: ABC  
vs. Analog (dashed): 6.03 kW ERP at 691 m HAAT, Network: ABC

Market: Medford-Klamath Falls, OR



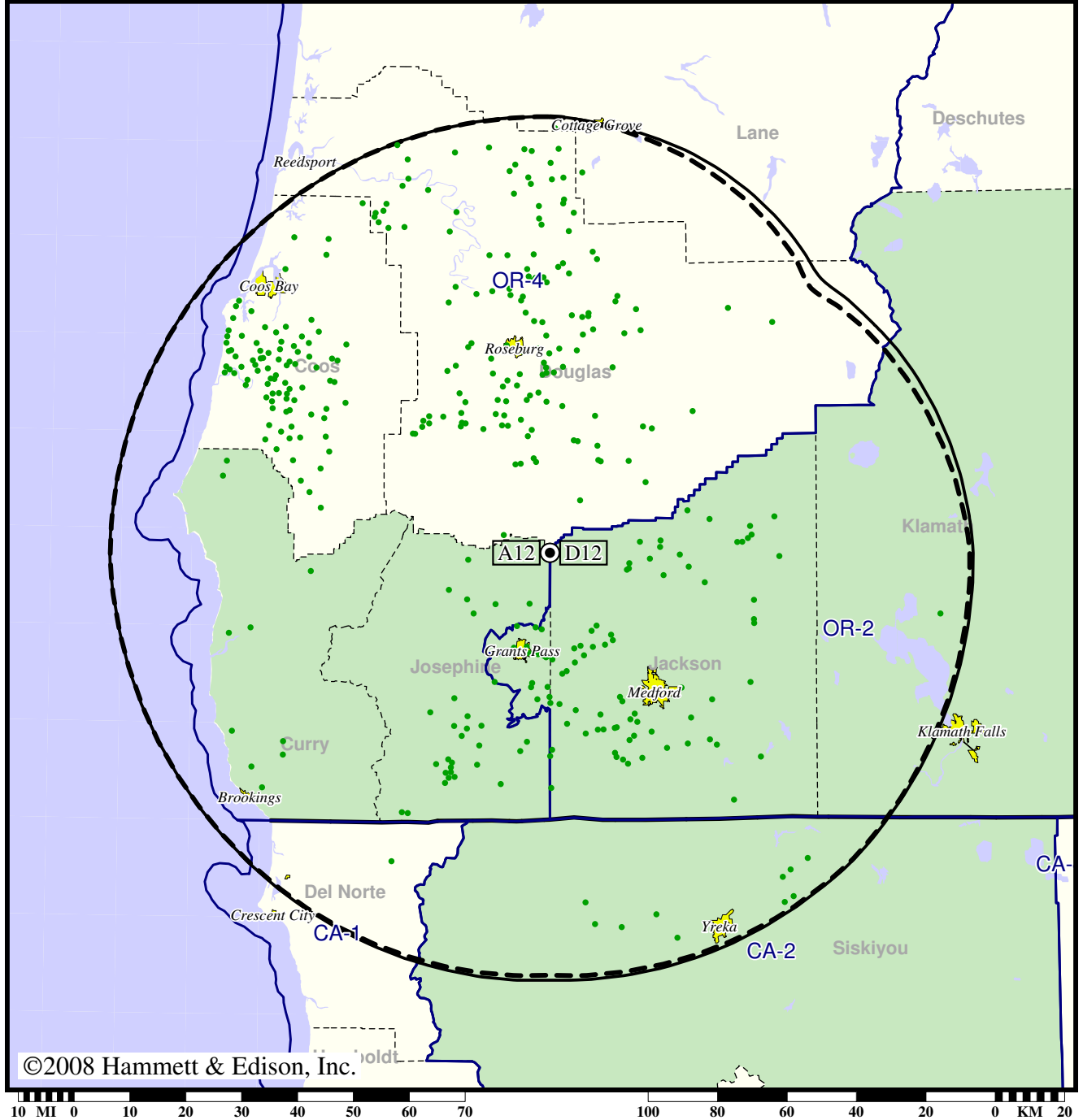
- Coverage gained after DTV transition
- (no symbol) No change in coverage
- ▲ Coverage lost after DTV transition

TV Station KDRV • Analog Channel 12, DTV Channel 12 • Medford, OR

Expected Change In Coverage: Granted Construction Permit

CP (solid): 16.9 kW ERP at 823 m HAAT, Network: ABC  
vs. Analog (dashed): 191 kW ERP at 823 m HAAT, Network: ABC

Market: Medford-Klamath Falls, OR



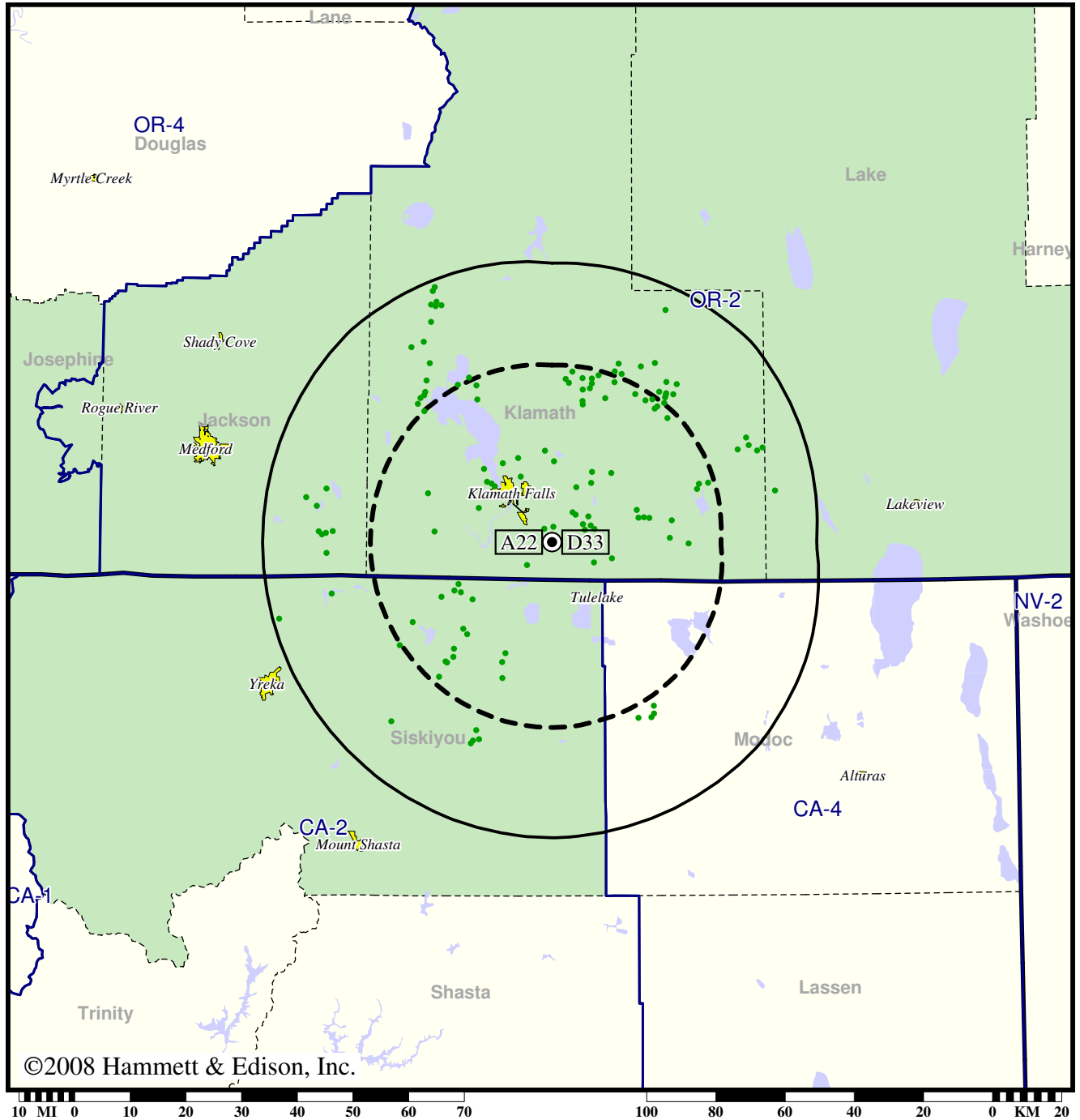
- Coverage gained after DTV transition
- (no symbol) No change in coverage

TV Station KFTS • Analog Channel 22, DTV Channel 33 • Klamath Falls, OR

Expected Change In Coverage: Licensed Operation

Licensed (solid): 9.60 kW ERP at 649 m HAAT, Network: PBS  
vs. Analog (dashed): 9.33 kW ERP at 656 m HAAT, Network: PBS

Market: Medford-Klamath Falls, OR



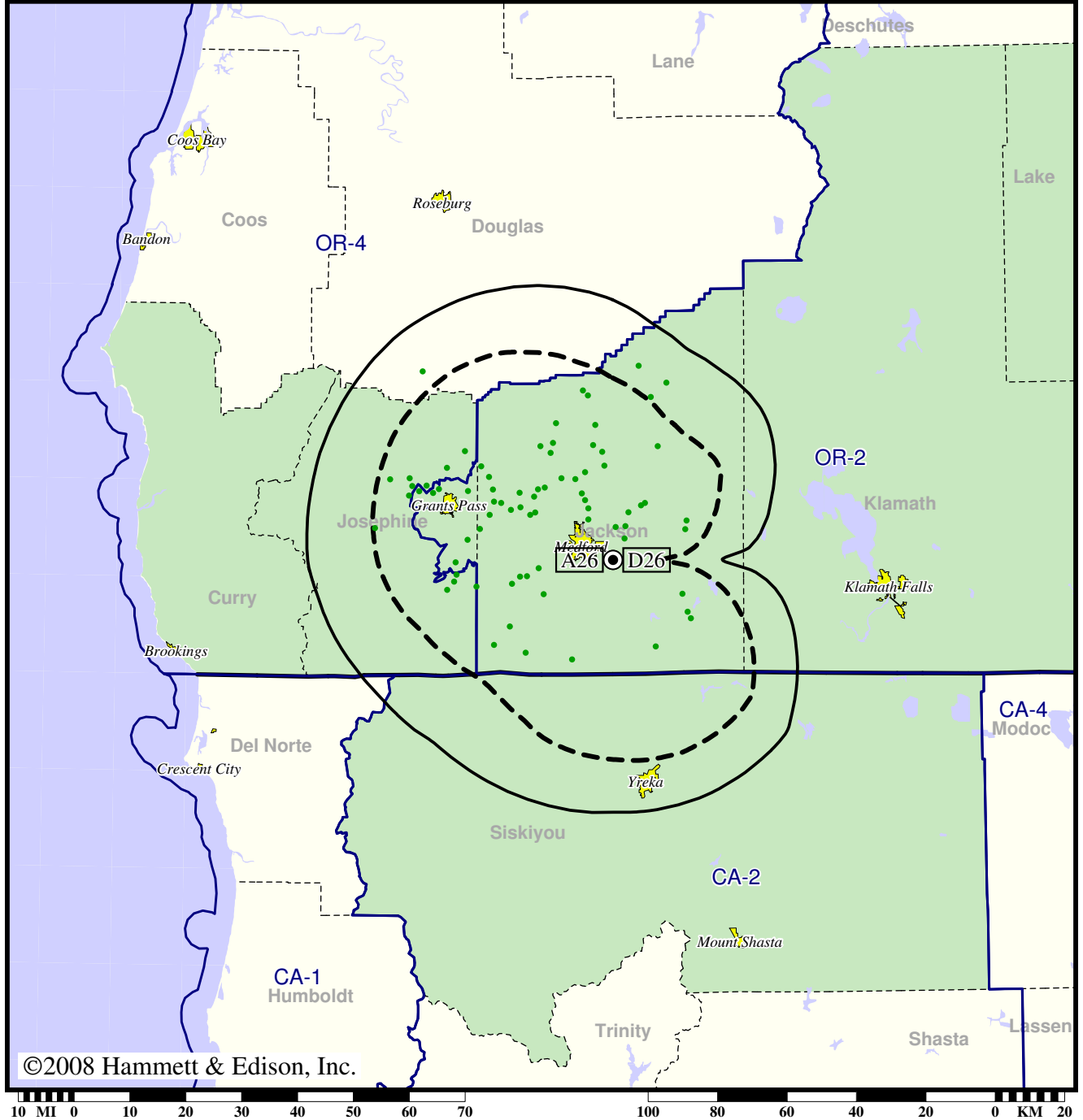
- Coverage gained after DTV transition
- (no symbol) No change in coverage

TV Station KMVU • Analog Channel 26, DTV Channel 26 • Medford, OR

Expected Change In Coverage: Granted Construction Permit

CP (solid): 16.2 kW ERP at 441 m HAAT, Network: Fox  
vs. Analog (dashed): 110 kW ERP at 440 m HAAT, Network: Fox

Market: Medford-Klamath Falls, OR



©2008 Hammett & Edison, Inc.

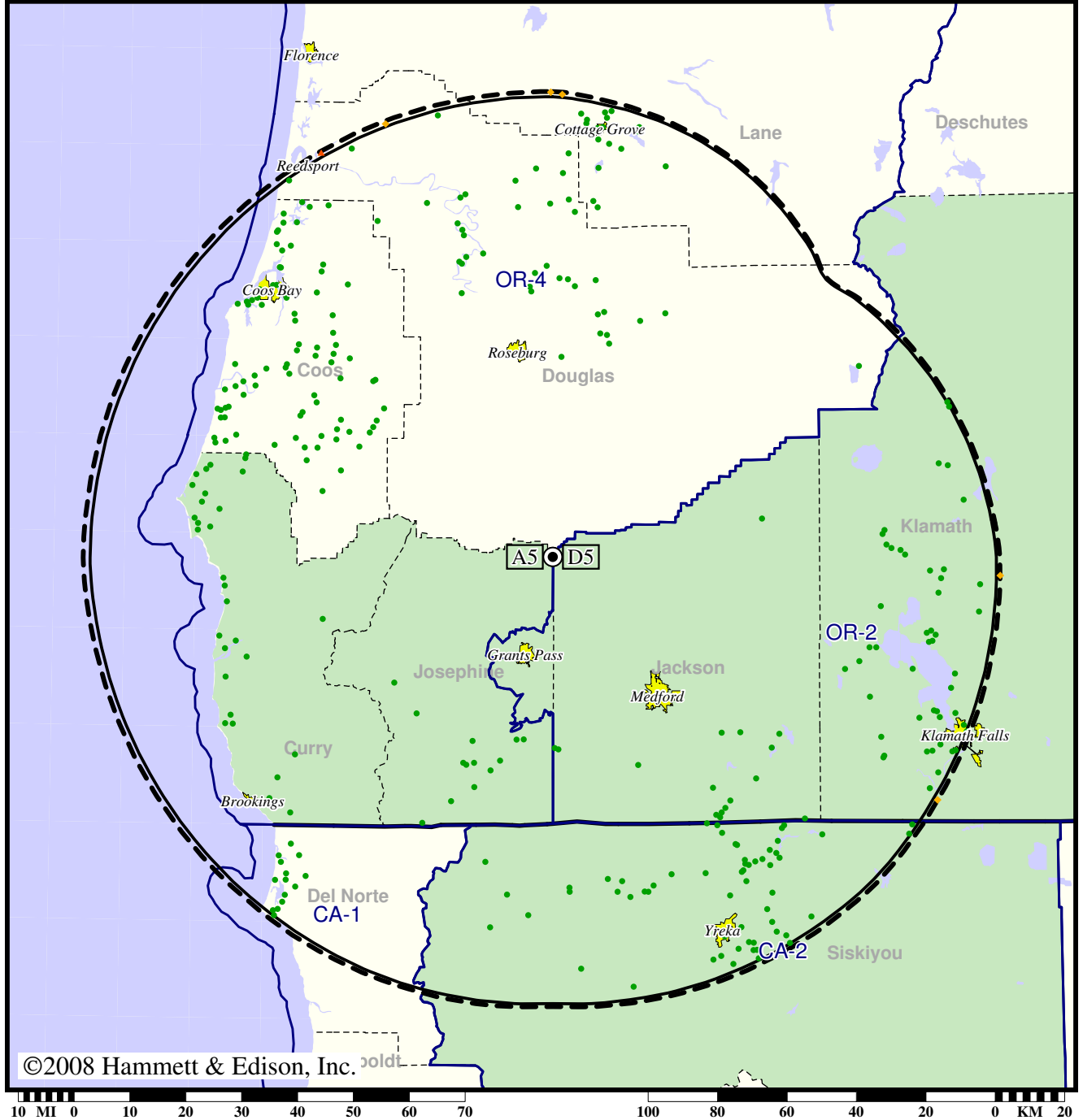
- Coverage gained after DTV transition
- (no symbol) No change in coverage

TV Station KOB1 • Analog Channel 5, DTV Channel 5 • Medford, OR

Expected Change In Coverage: Granted Construction Permit

CP (solid): 5.40 kW ERP at 823 m HAAT, Network: NBC  
 vs. Analog (dashed): 60.3 kW ERP at 823 m HAAT, Network: NBC

Market: Medford-Klamath Falls, OR



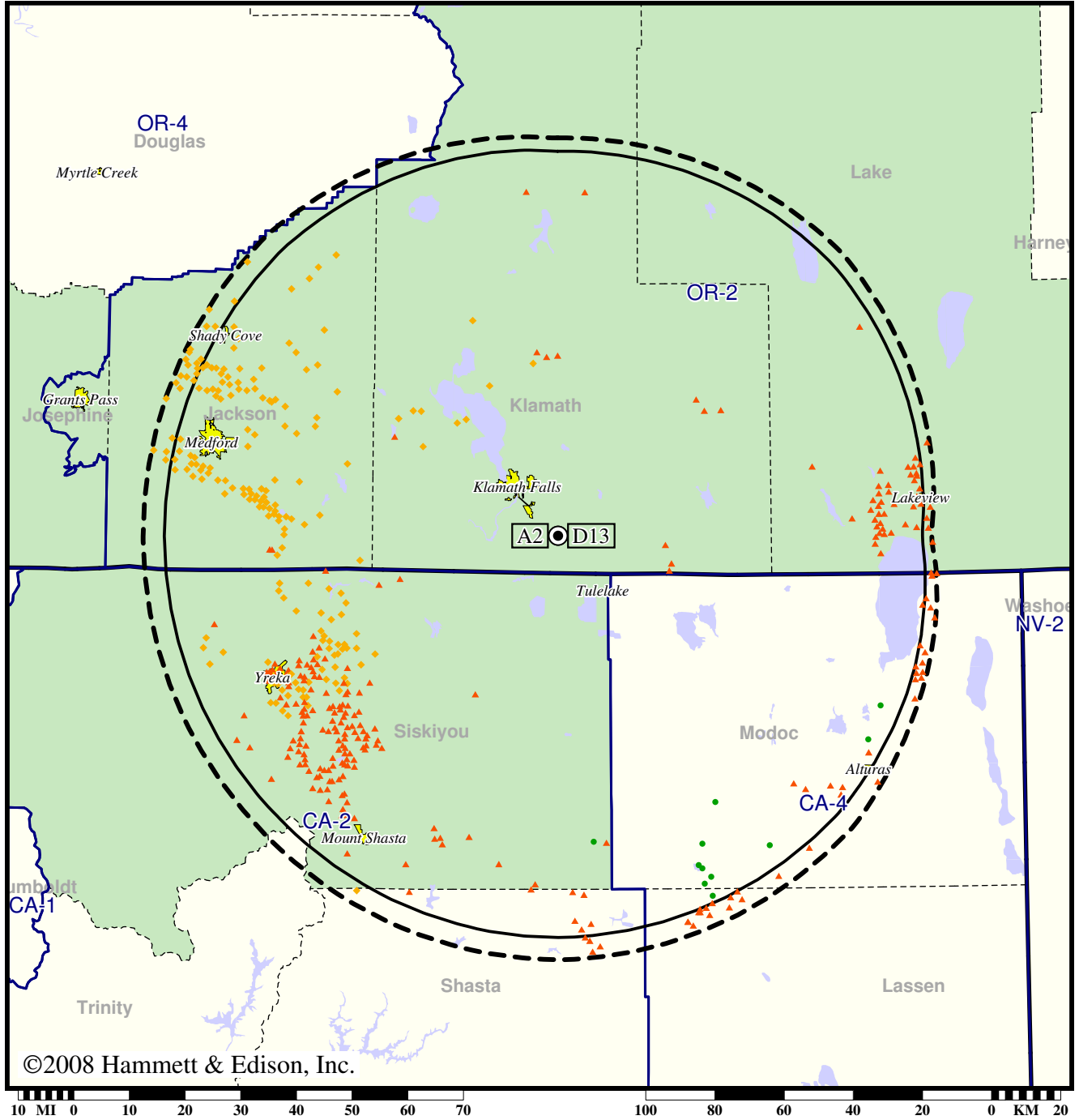
- Coverage gained after DTV transition
- (no symbol) No change in coverage
- ◆ Coverage lost but still served by same network
- ▲ Coverage lost and no other service by same network

TV Station KOTI • Analog Channel 2, DTV Channel 13 • Klamath Falls, OR

Expected Change In Coverage: Licensed Operation

Licensed (solid): 9.00 kW ERP at 659 m HAAT, Network: NBC  
vs. Analog (dashed): 35.5 kW ERP at 671 m HAAT, Network: NBC

Market: Medford-Klamath Falls, OR



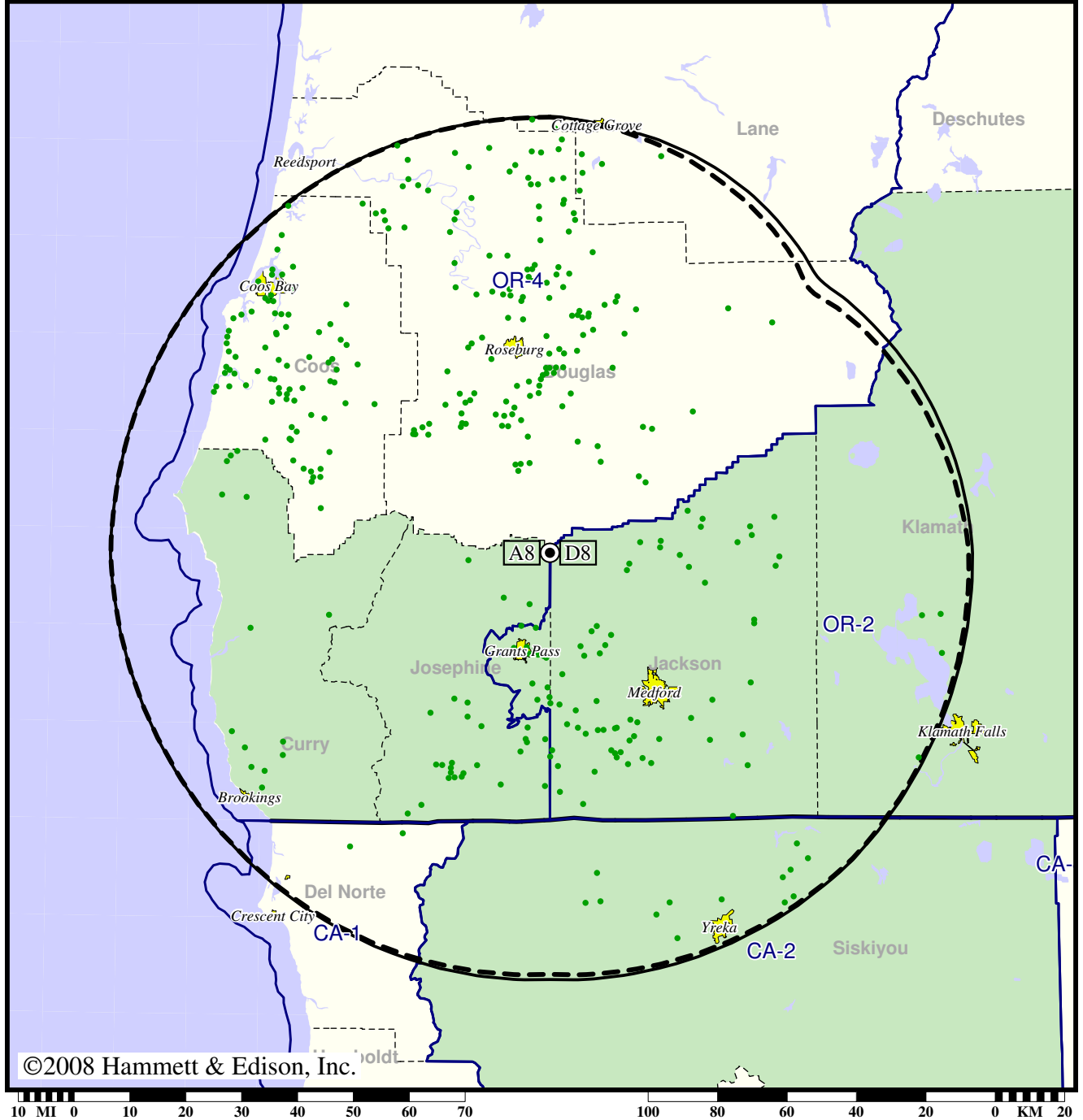
- Coverage gained after DTV transition
- (no symbol) No change in coverage
- ◆ Coverage lost but still served by same network
- ▲ Coverage lost and no other service by same network

TV Station KSYS • Analog Channel 8, DTV Channel 8 • Medford, OR

Expected Change In Coverage: Granted Construction Permit

CP (solid): 16.9 kW ERP at 818 m HAAT, Network: PBS  
vs. Analog (dashed): 191 kW ERP at 818 m HAAT, Network: PBS

Market: Medford-Klamath Falls, OR



- Coverage gained after DTV transition
- (no symbol) No change in coverage

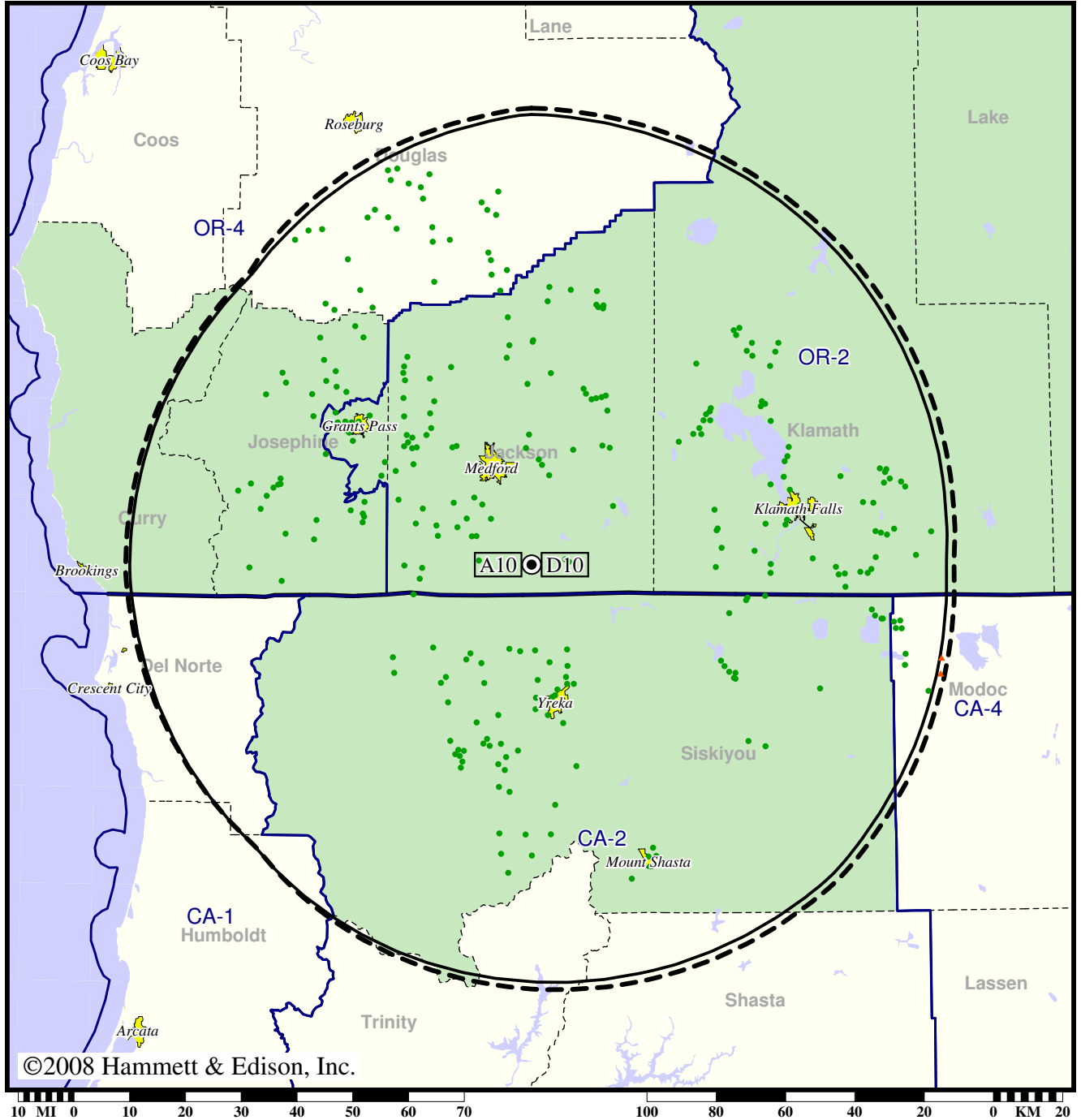


TV Station KTVL • Analog Channel 10, DTV Channel 10 • Medford, OR

Expected Change In Coverage: Granted Construction Permit

CP (solid): 9.00 kW ERP at 1009 m HAAT, Network: CBS  
vs. Analog (dashed): 132 kW ERP at 1009 m HAAT, Network: CBS

Market: Medford-Klamath Falls, OR



- Coverage gained after DTV transition
- (no symbol) No change in coverage
- ▲ Coverage lost after DTV transition