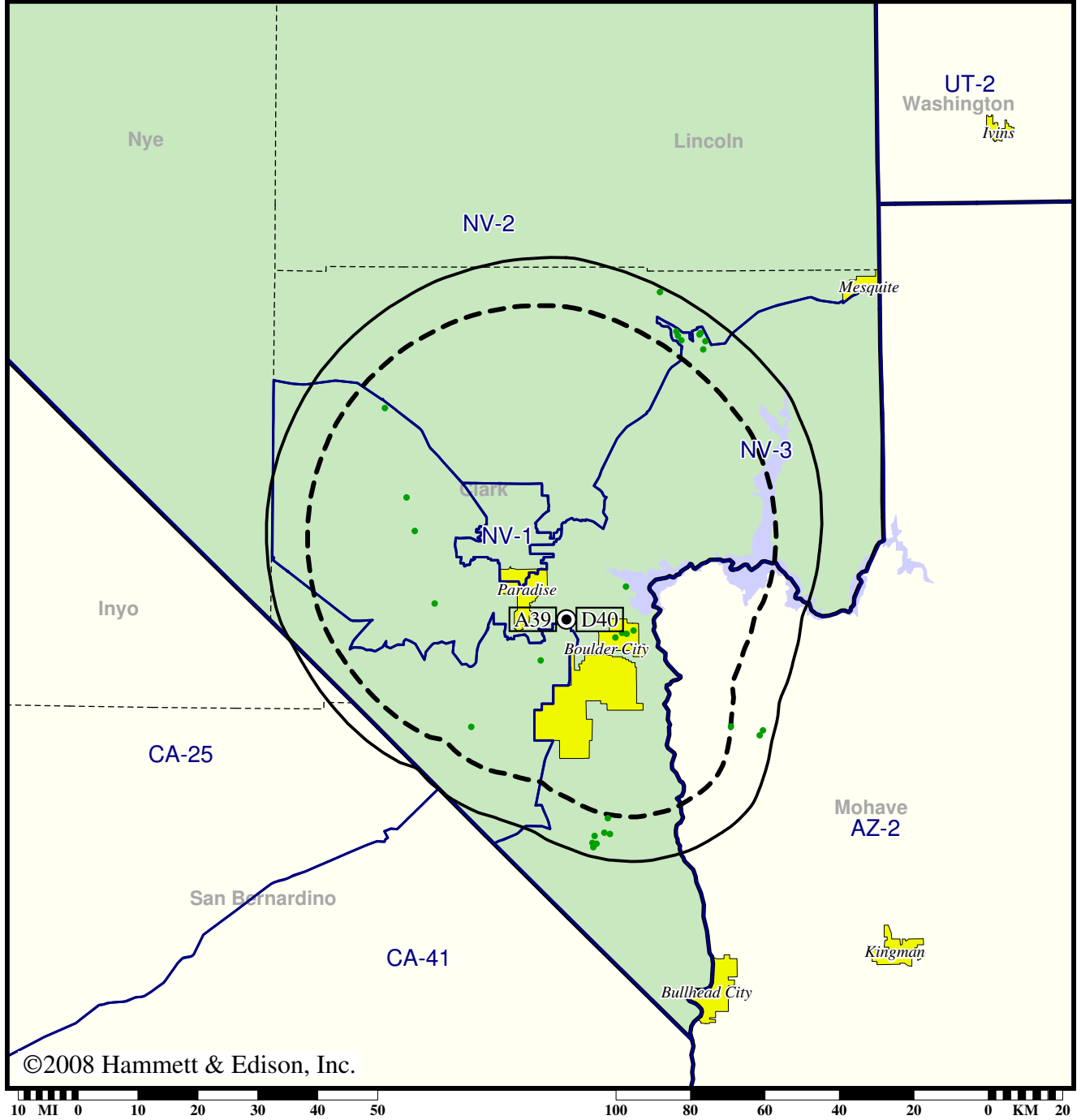


TV Station KBLR • Analog Channel 39, DTV Channel 40 • Paradise, NV

Expected Change In Coverage: Licensed Operation

Licensed (solid): 230 kW ERP at 329 m HAAT
vs. Analog (dashed): 1320 kW ERP at 363 m HAAT

Market: Las Vegas, NV



©2008 Hammett & Edison, Inc.

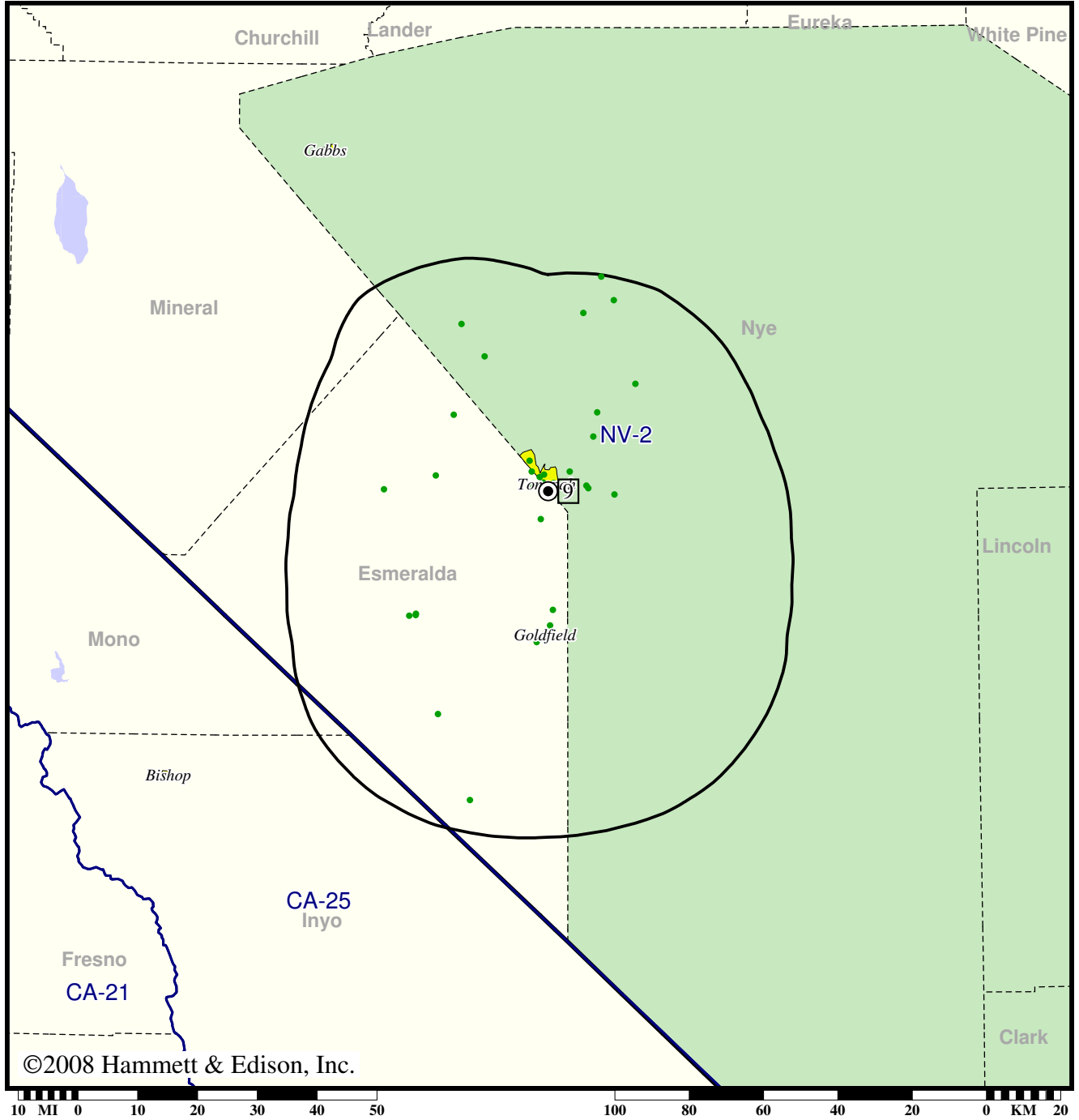
- Coverage gained after DTV transition
- (no symbol) No change in coverage

DTV Station KBMO-TV • Channel 9 • Tonopah, NV

Expected Change In Coverage: Post-Transition Appendix B Facility

Appendix B (solid): 3.20 kW ERP at 448 m HAAT

Market: Las Vegas, NV



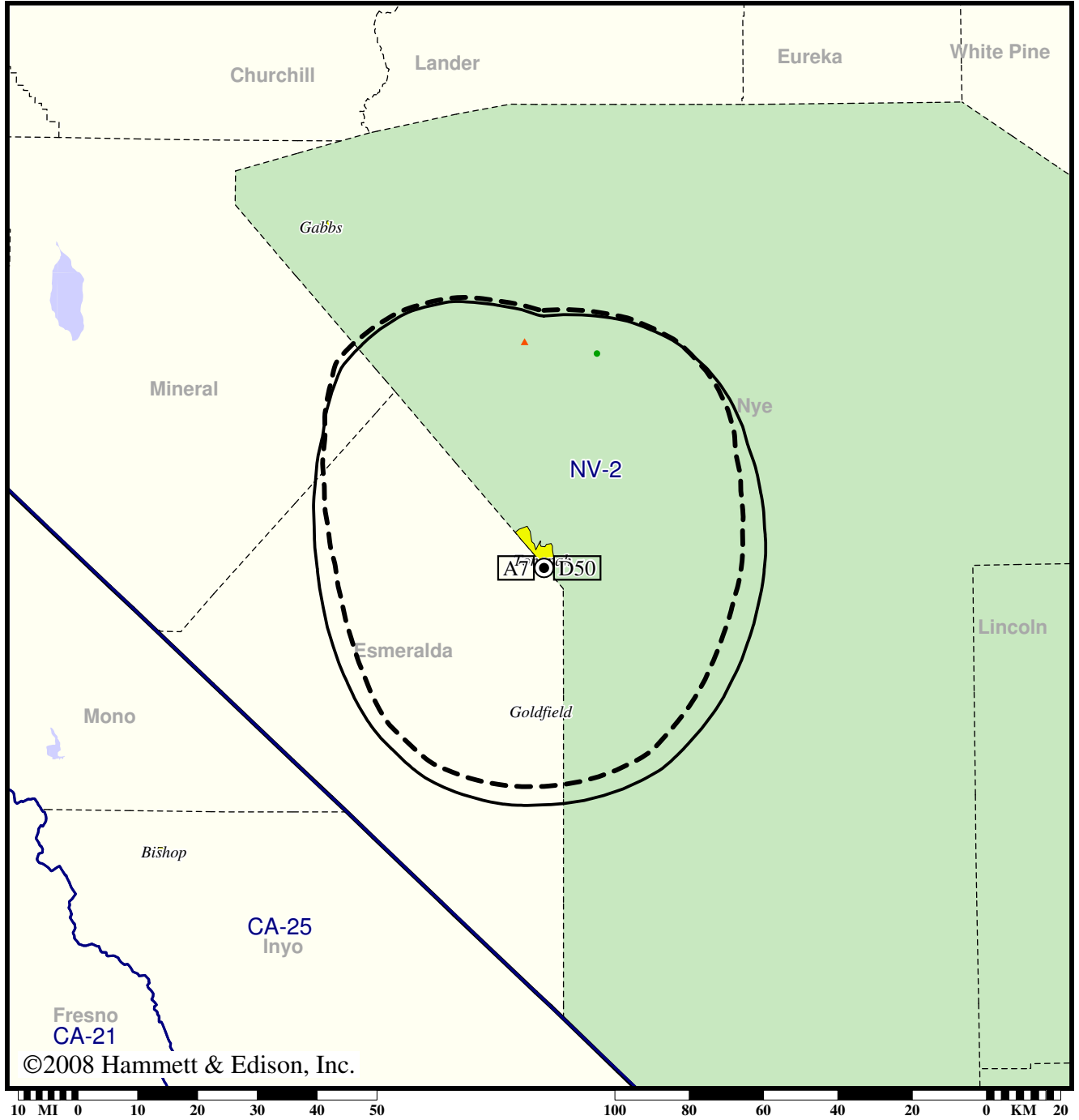
- Coverage gained after DTV transition
- (no symbol) No change in coverage

TV Station KEGS • Analog Channel 7, DTV Channel 50 • Goldfield, NV

Expected Change In Coverage: Granted Construction Permit

CP (solid): 30.0 kW ERP at 441 m HAAT
vs. Analog (dashed): 22.9 kW ERP at 448 m HAAT

Market: Las Vegas, NV



©2008 Hammett & Edison, Inc.

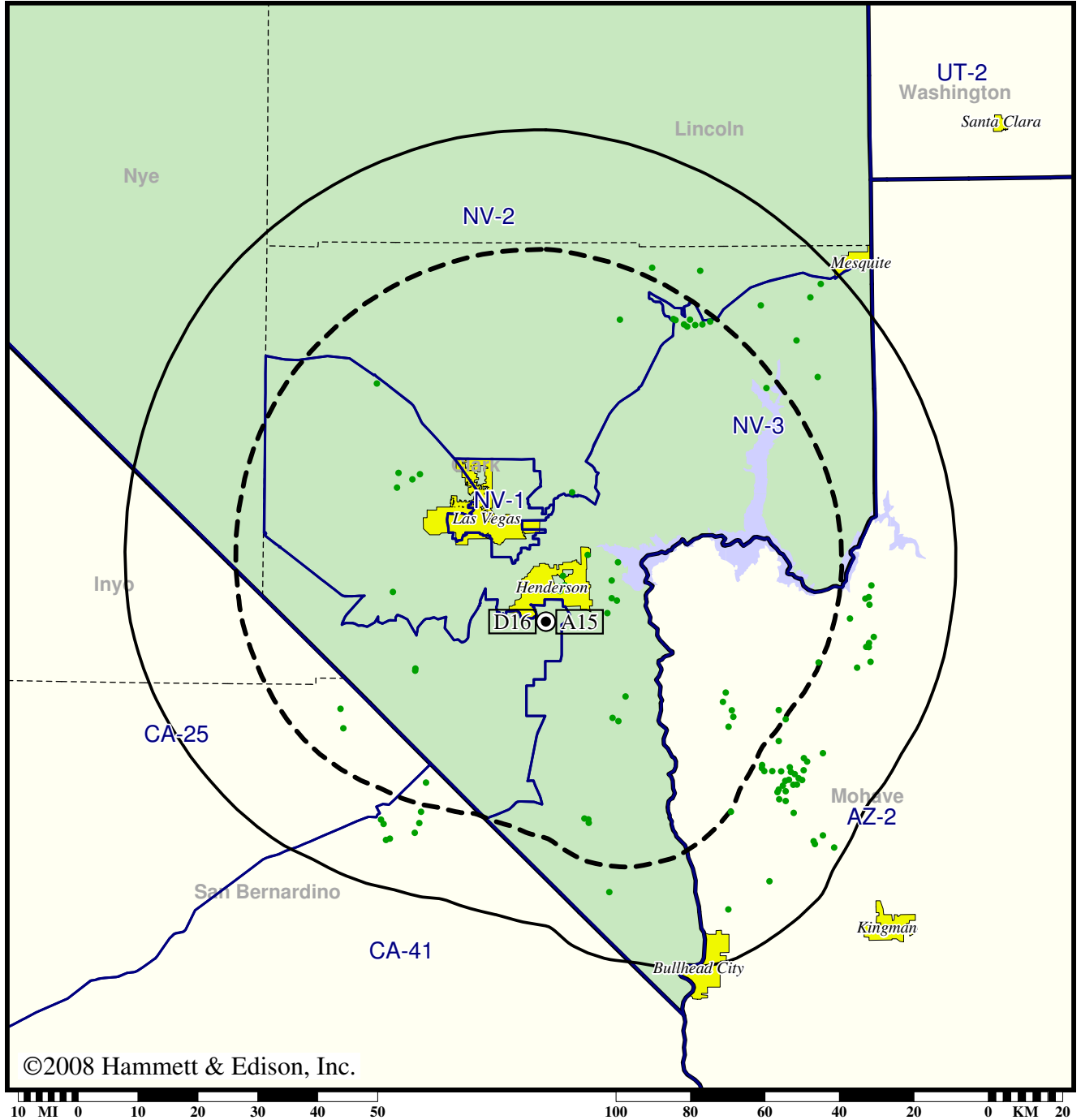
- Coverage gained after DTV transition
- (no symbol) No change in coverage
- ▲ Coverage lost after DTV transition

TV Station KINC • Analog Channel 15, DTV Channel 16 • Las Vegas, NV

Expected Change In Coverage: Licensed Operation

Licensed (solid): 1000 kW ERP at 570 m HAAT
vs. Analog (dashed): 1120 kW ERP at 564 m HAAT

Market: Las Vegas, NV



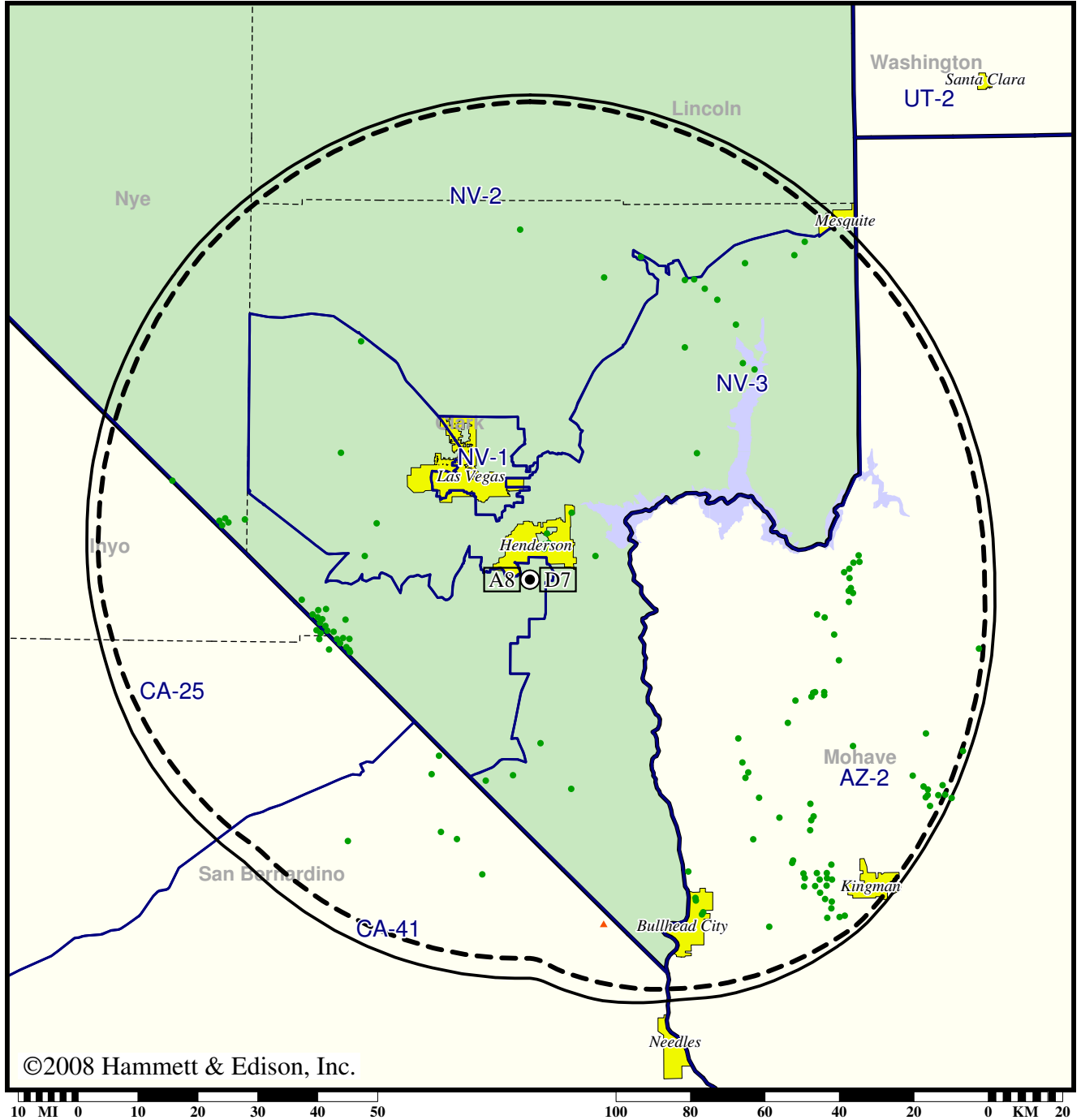
- Coverage gained after DTV transition
- (no symbol) No change in coverage

Station KLAS-TV • Analog Channel 8, DTV Channel 7 • Las Vegas, NV

Expected Change In Coverage: Licensed Operation

Licensed (solid): 30.1 kW ERP at 609 m HAAT, Network: CBS
vs. Analog (dashed): 316 kW ERP at 609 m HAAT, Network: CBS

Market: Las Vegas, NV



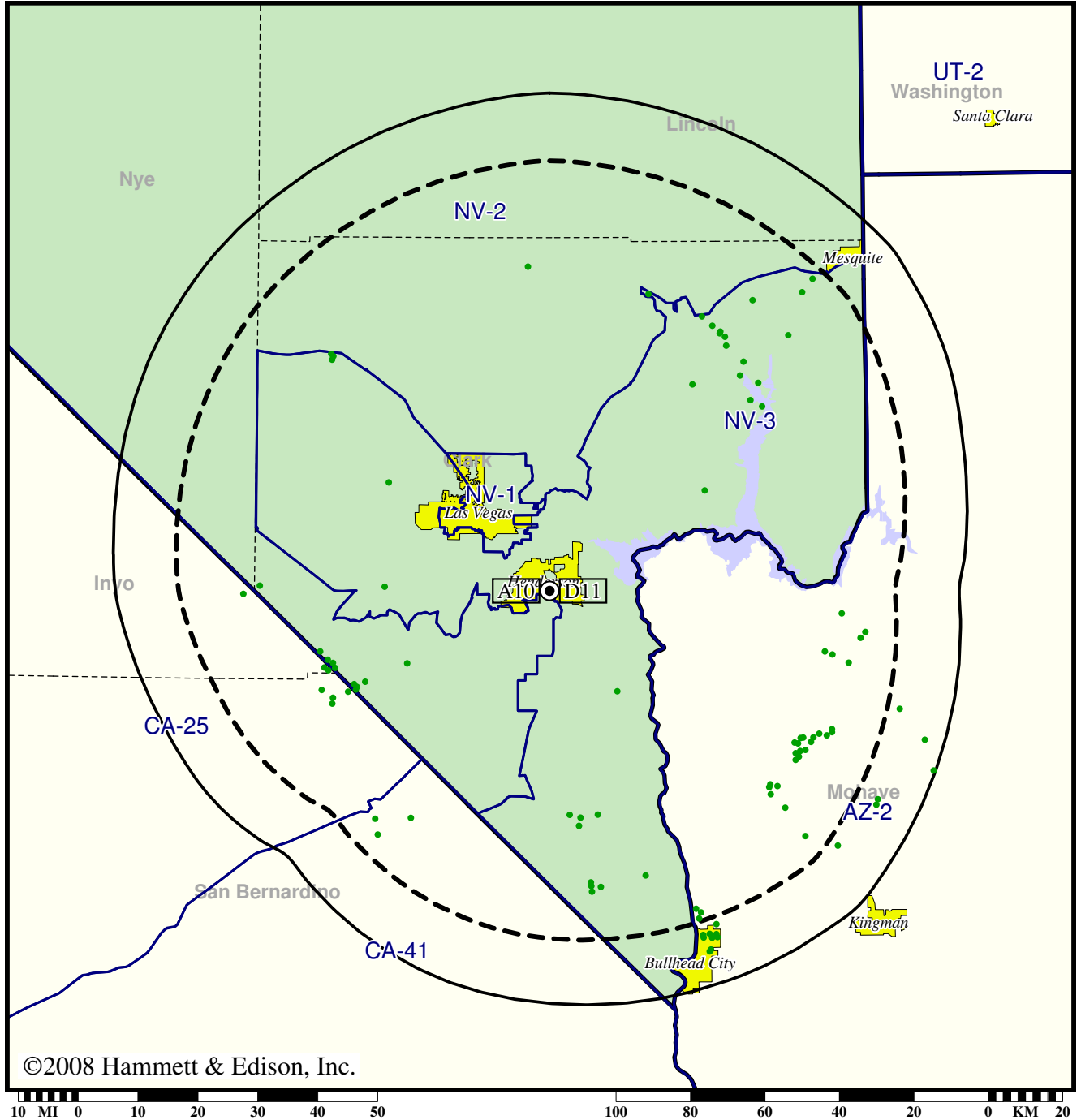
- Coverage gained after DTV transition
- (no symbol) No change in coverage
- ▲ Coverage lost after DTV transition

TV Station KLVX • Analog Channel 10, DTV Channel 11 • Las Vegas, NV

Expected Change In Coverage: Licensed Operation

Licensed (solid): 105 kW ERP at 371 m HAAT, Network: PBS
vs. Analog (dashed): 295 kW ERP at 372 m HAAT, Network: PBS

Market: Las Vegas, NV



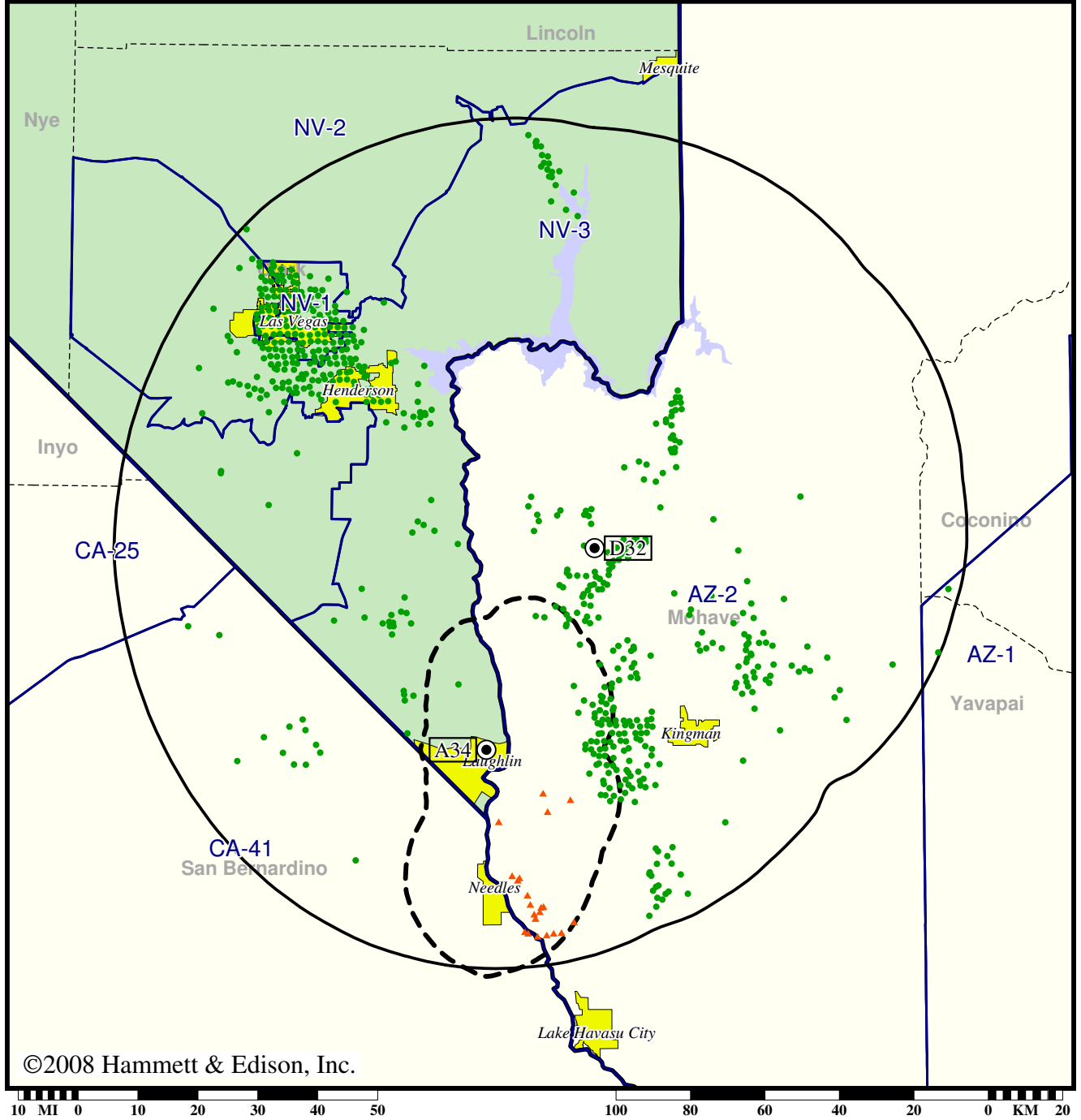
- Coverage gained after DTV transition
- (no symbol) No change in coverage

TV Station KMCC • Analog Channel 34, DTV Channel 32 • Laughlin, NV

Expected Change In Coverage: Post-Transition Appendix B Facility

Appendix B (solid): 1000 kW ERP at 607 m HAAT
vs. Analog (dashed): 416 kW ERP at -63 m HAAT

Market: Las Vegas, NV



©2008 Hammett & Edison, Inc.

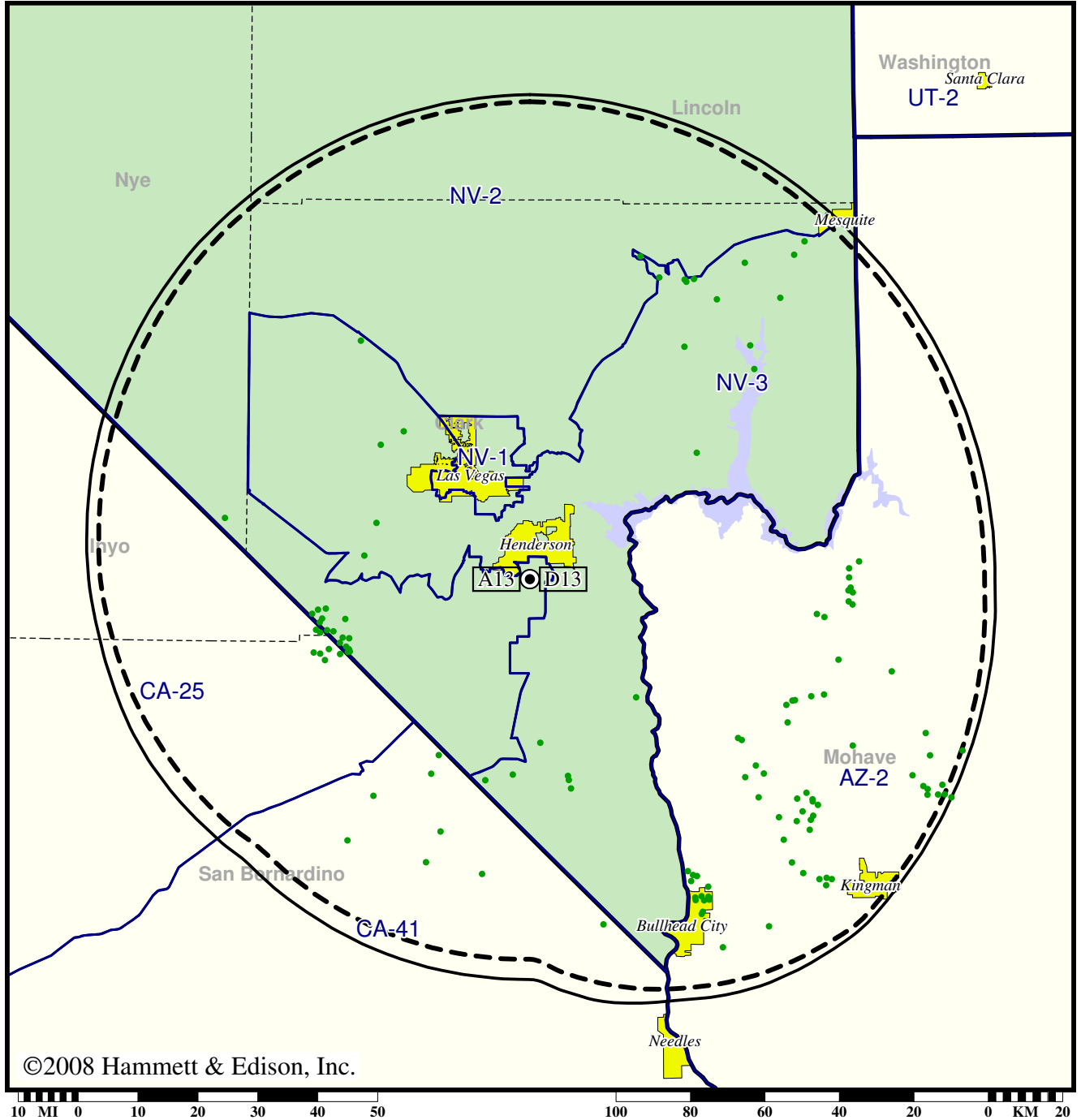
- Coverage gained after DTV transition
- (no symbol) No change in coverage
- ▲ Coverage lost after DTV transition

TV Station KTNV • Analog Channel 13, DTV Channel 13 • Las Vegas, NV

Expected Change In Coverage: Granted Construction Permit

CP (solid): 30.5 kW ERP at 606 m HAAT, Network: ABC
vs. Analog (dashed): 316 kW ERP at 606 m HAAT, Network: ABC

Market: Las Vegas, NV



©2008 Hammett & Edison, Inc.

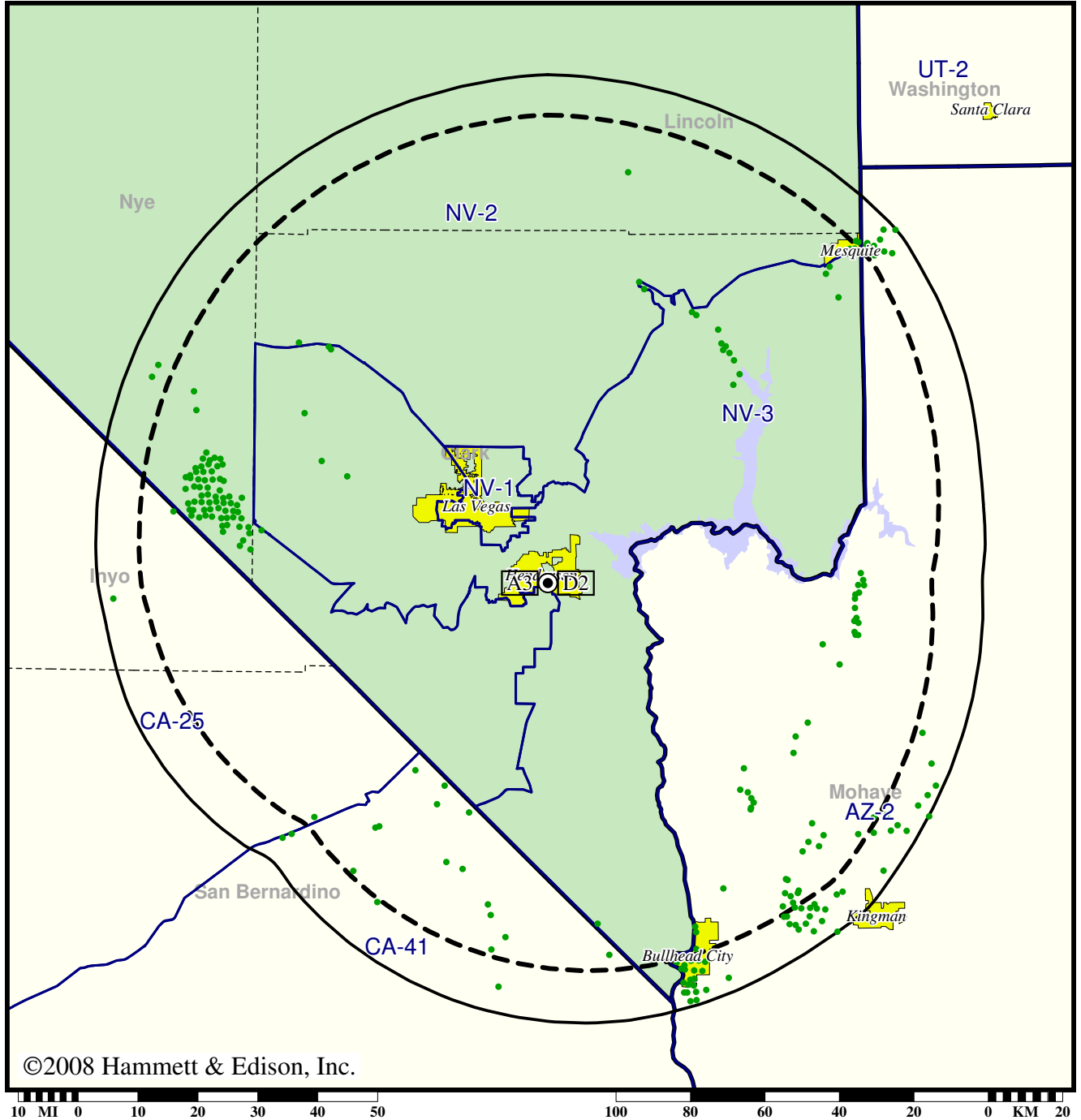
- Coverage gained after DTV transition
- (no symbol) No change in coverage

TV Station KVBC • Analog Channel 3, DTV Channel 2 • Las Vegas, NV

Expected Change In Coverage: Licensed Operation

Licensed (solid): 27.7 kW ERP at 386 m HAAT, Network: NBC
vs. Analog (dashed): 100 kW ERP at 385 m HAAT, Network: NBC

Market: Las Vegas, NV



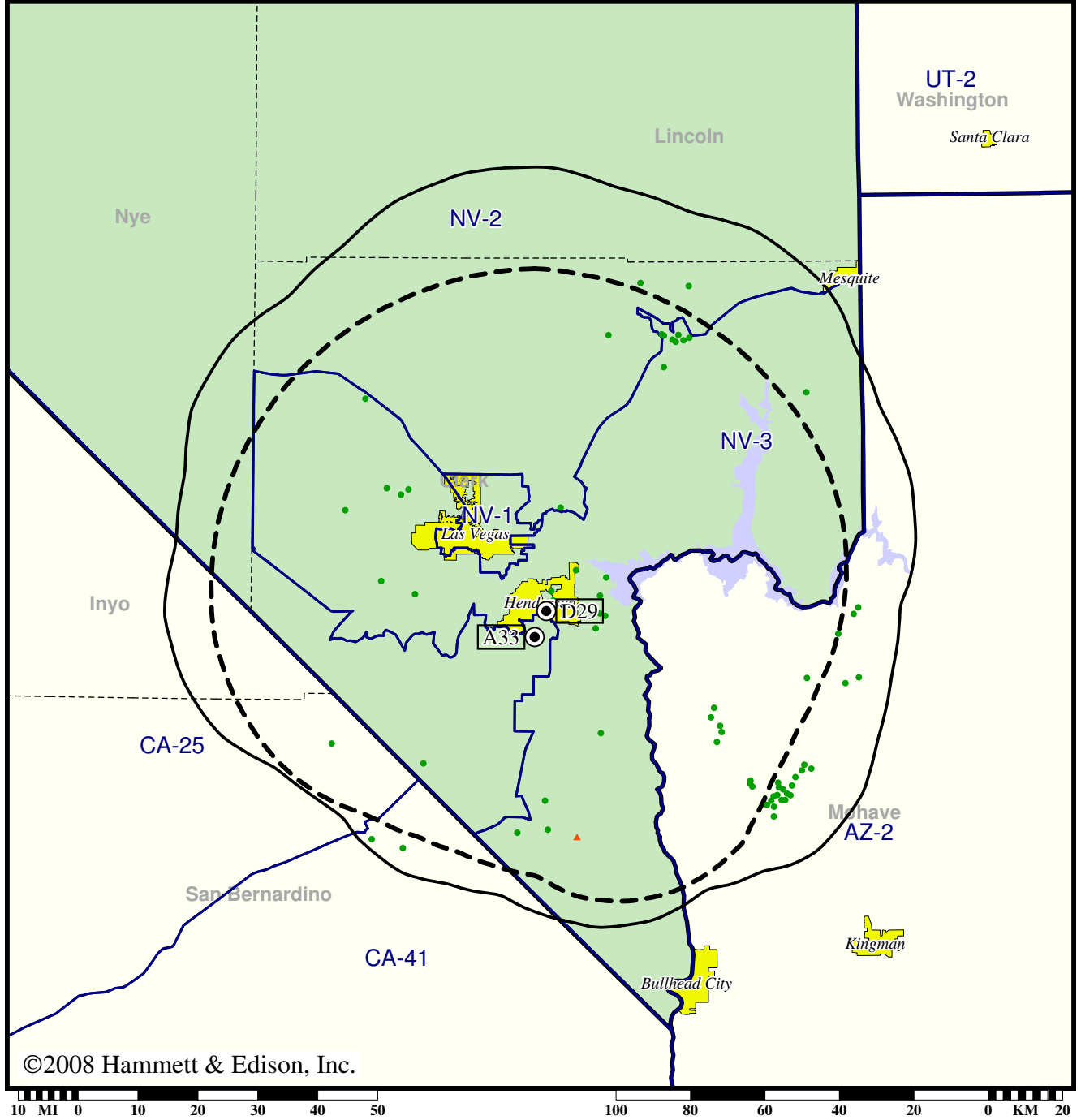
- Coverage gained after DTV transition
- (no symbol) No change in coverage

TV Station KVCW • Analog Channel 33, DTV Channel 29 • Las Vegas, NV

Expected Change In Coverage: Licensed Operation

Licensed (solid): 1000 kW ERP at 383 m HAAT
vs. Analog (dashed): 1350 kW ERP at 581 m HAAT

Market: Las Vegas, NV



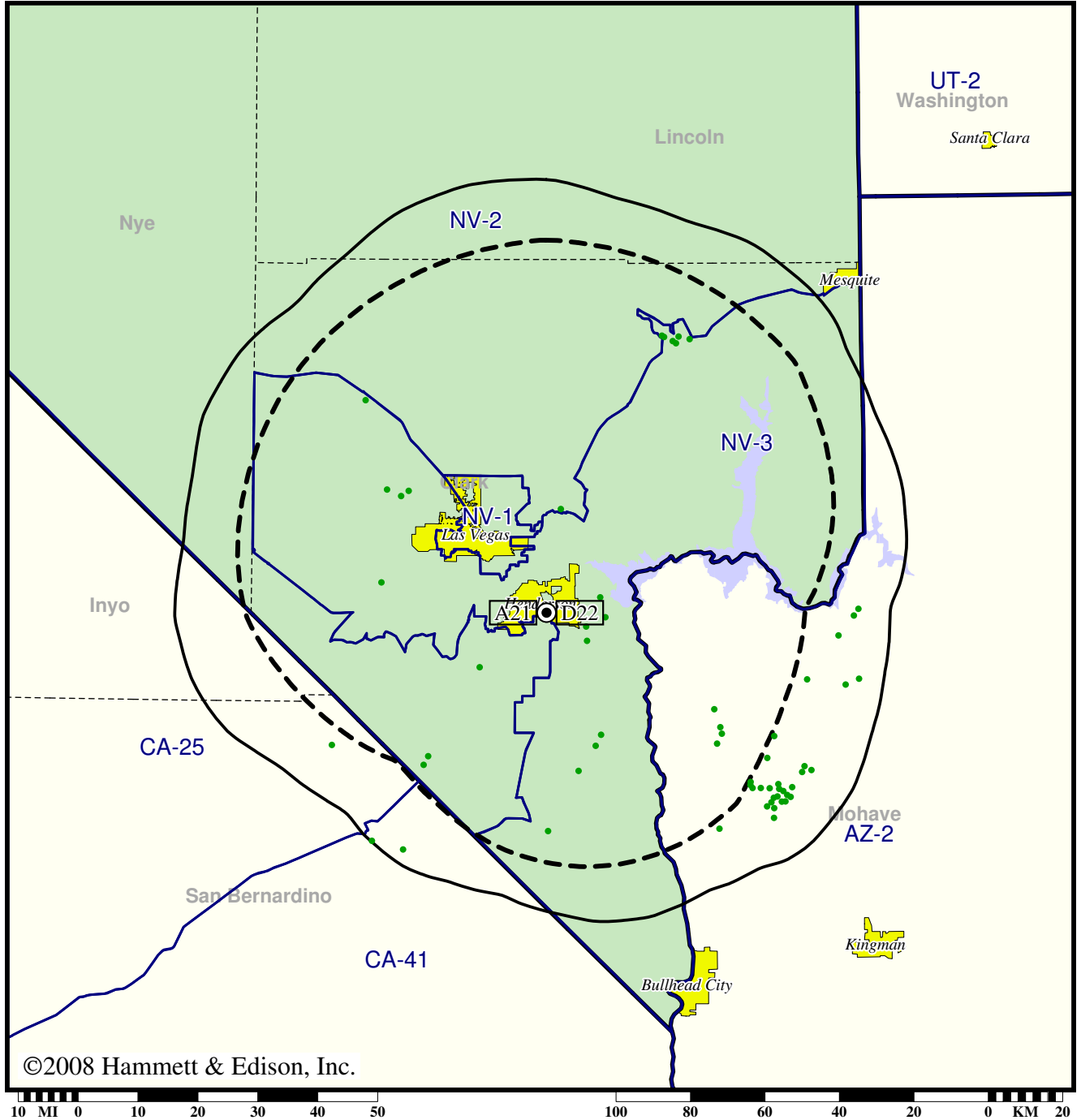
- Coverage gained after DTV transition
- (no symbol) No change in coverage
- ▲ Coverage lost after DTV transition

TV Station KVMY • Analog Channel 21, DTV Channel 22 • Las Vegas, NV

Expected Change In Coverage: Licensed Operation

Licensed (solid): 630 kW ERP at 383 m HAAT
vs. Analog (dashed): 2570 kW ERP at 368 m HAAT

Market: Las Vegas, NV



©2008 Hammett & Edison, Inc.

10 MI 0 10 20 30 40 50 100 80 60 40 20 0 KM 20

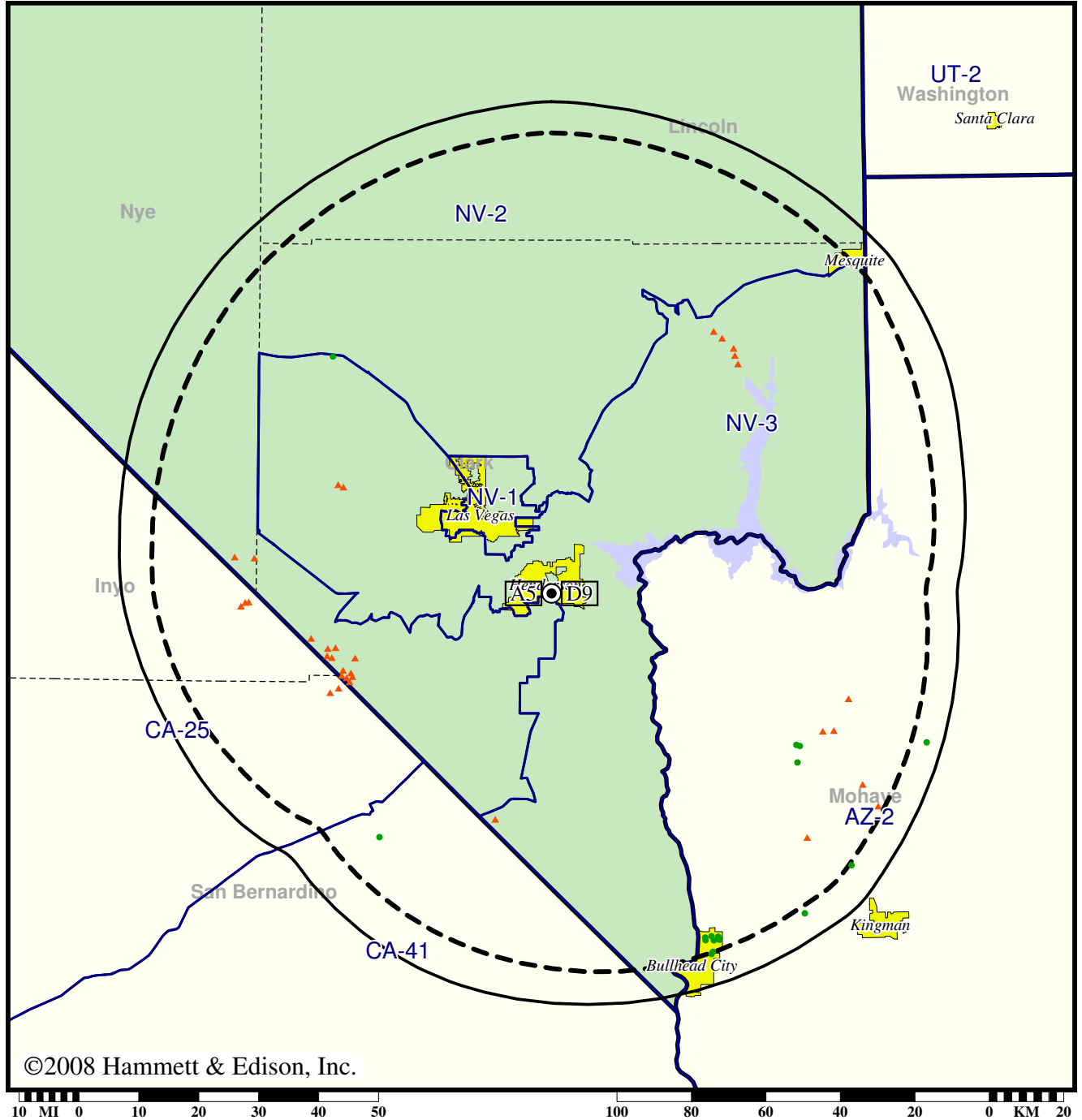
- Coverage gained after DTV transition
- (no symbol) No change in coverage

Station KVVU-TV • Analog Channel 5, DTV Channel 9 • Henderson, NV

Expected Change In Coverage: Licensed Operation

Licensed (solid): 86.0 kW ERP at 384 m HAAT, Network: Fox
vs. Analog (dashed): 100 kW ERP at 362 m HAAT, Network: Fox

Market: Las Vegas, NV



- Coverage gained after DTV transition
- (no symbol) No change in coverage
- ▲ Coverage lost after DTV transition