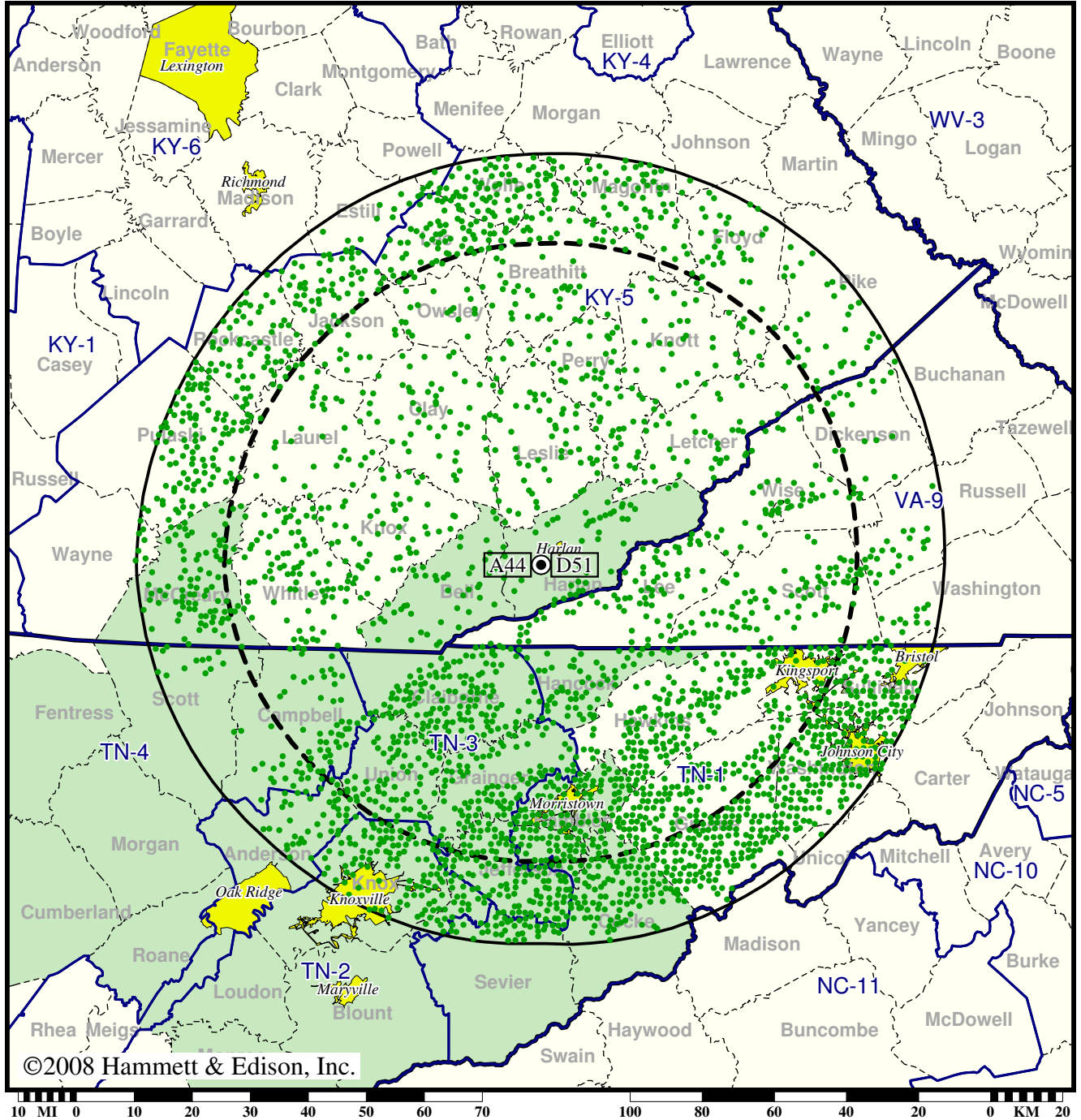


TV Station WAGV • Analog Channel 44, DTV Channel 51 • Harlan, KY

Expected Change In Coverage: Licensed Operation

Licensed (solid): 550 kW ERP at 577 m HAAT
vs. Analog (dashed): 1000 kW ERP at 601 m HAAT

Market: Knoxville, TN



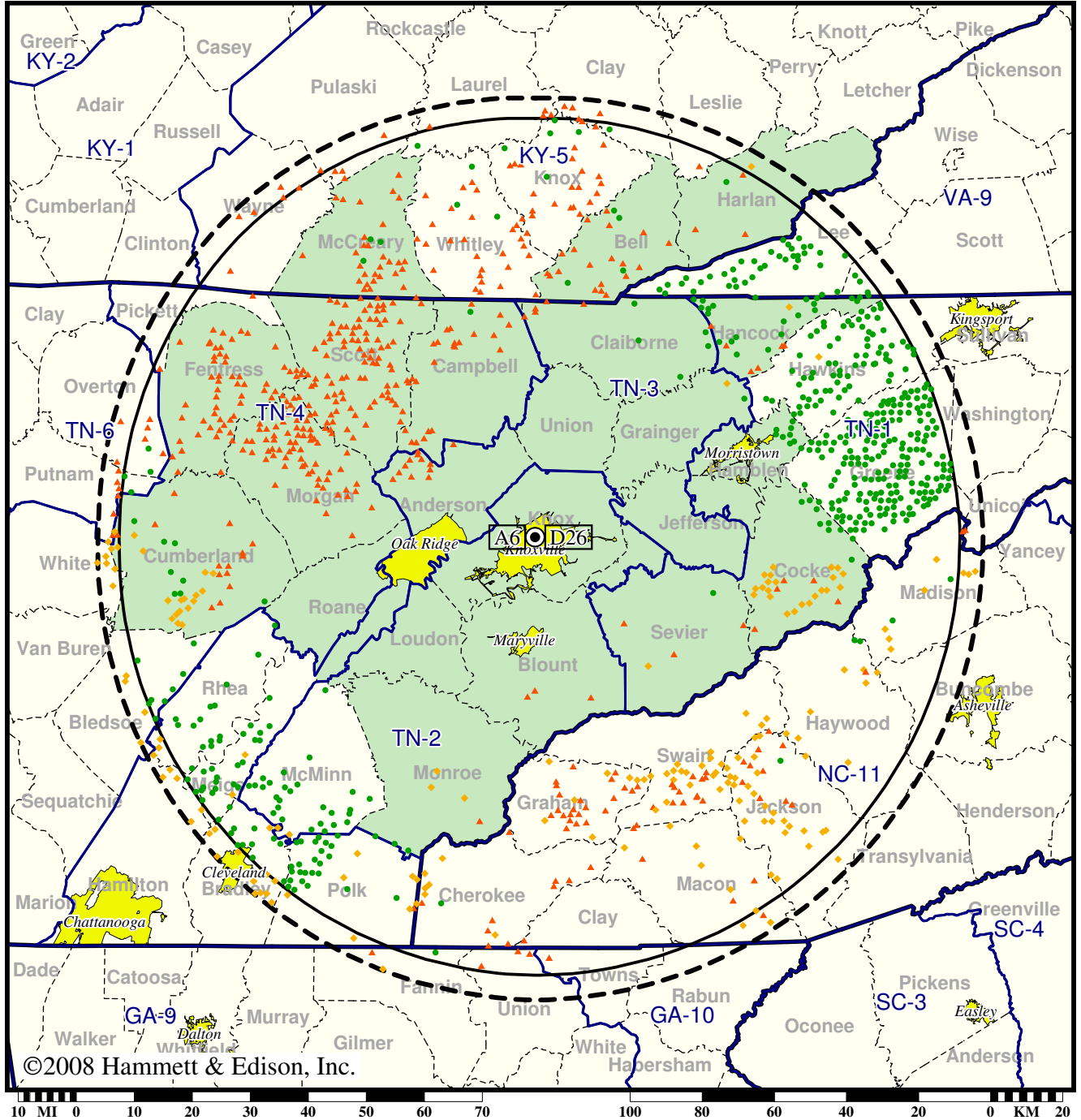
- Coverage gained after DTV transition
- (no symbol) No change in coverage

Station WATE-TV • Analog Channel 6, DTV Channel 26 • Knoxville, TN

Expected Change In Coverage: Licensed Operation

Licensed (solid): 930 kW ERP at 529 m HAAT, Network: ABC
vs. Analog (dashed): 100 kW ERP at 548 m HAAT, Network: ABC

Market: Knoxville, TN



©2008 Hammett & Edison, Inc.

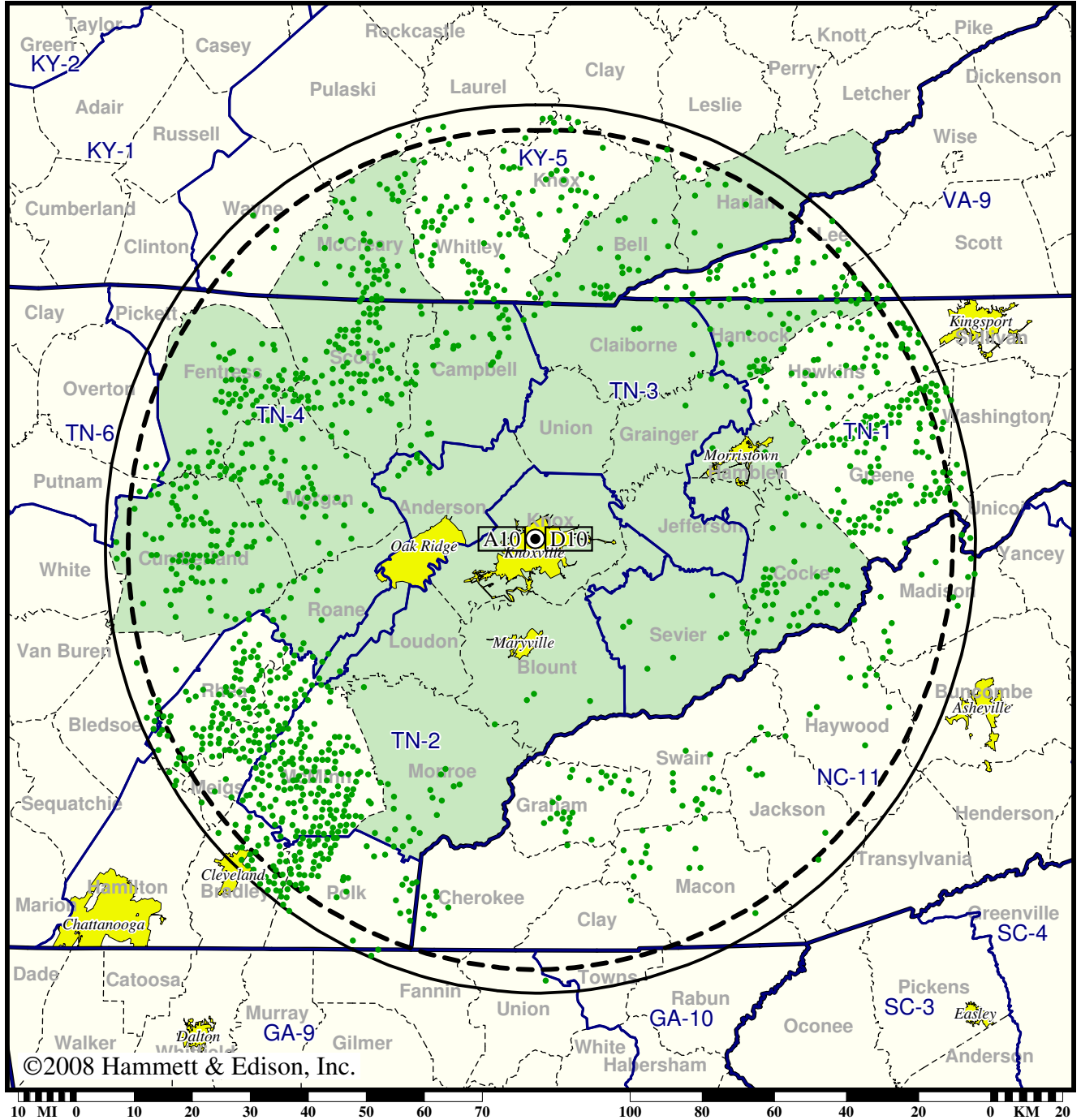
- Coverage gained after DTV transition
- (no symbol) No change in coverage
- ◆ Coverage lost but still served by same network
- ▲ Coverage lost and no other service by same network

Station WBIR-TV • Analog Channel 10, DTV Channel 10 • Knoxville, TN

Expected Change In Coverage: Granted Construction Permit

CP (solid): 40.9 kW ERP at 546 m HAAT, Network: NBC
vs. Analog (dashed): 316 kW ERP at 546 m HAAT, Network: NBC

Market: Knoxville, TN



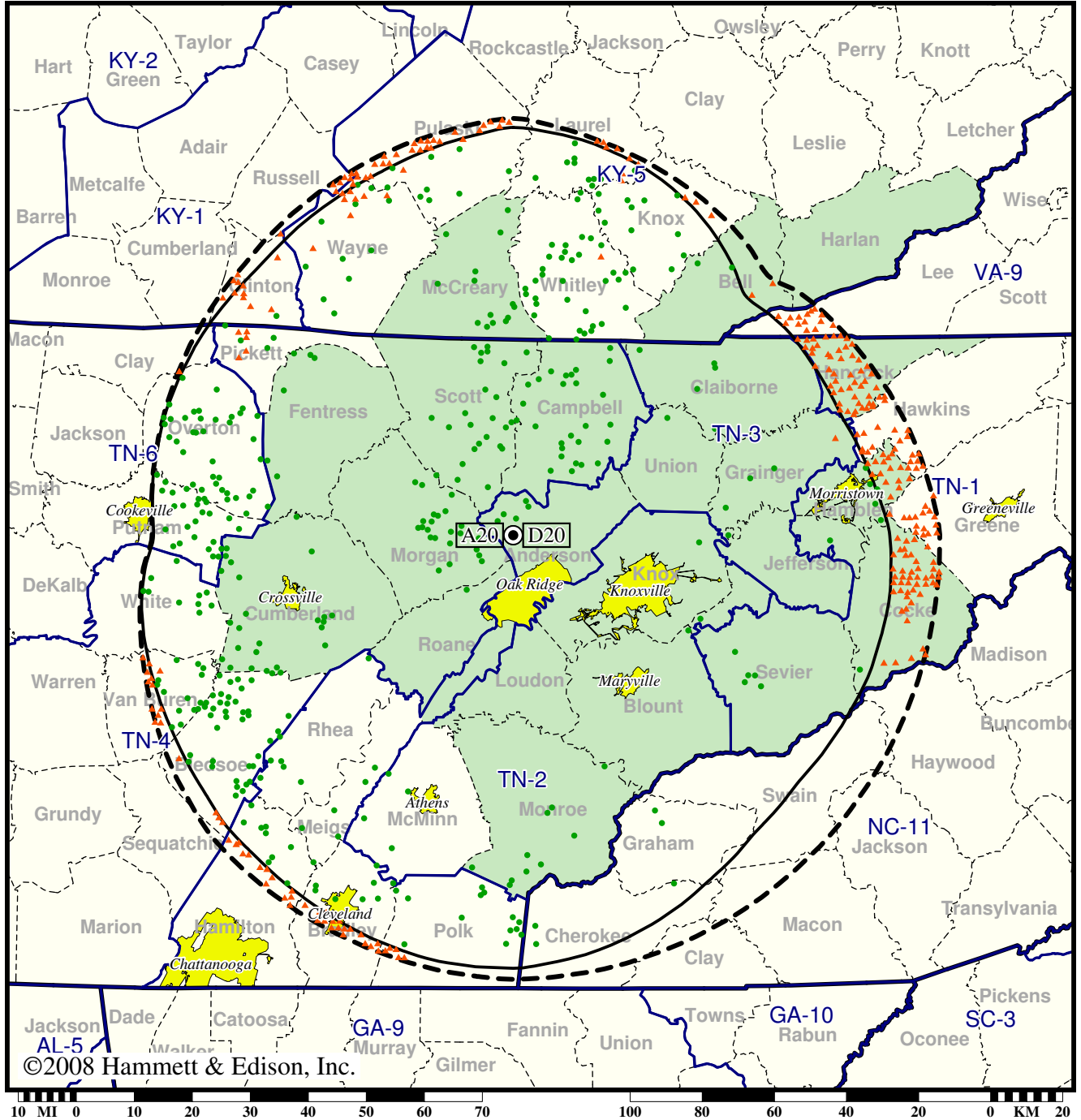
- Coverage gained after DTV transition
- (no symbol) No change in coverage

Station WBXX-TV • Analog Channel 20, DTV Channel 20 • Crossville, TN

Expected Change In Coverage: Granted Construction Permit

CP (solid): 188 kW ERP at 719 m HAAT
vs. Analog (dashed): 3630 kW ERP at 738 m HAAT

Market: Knoxville, TN



©2008 Hammett & Edison, Inc.

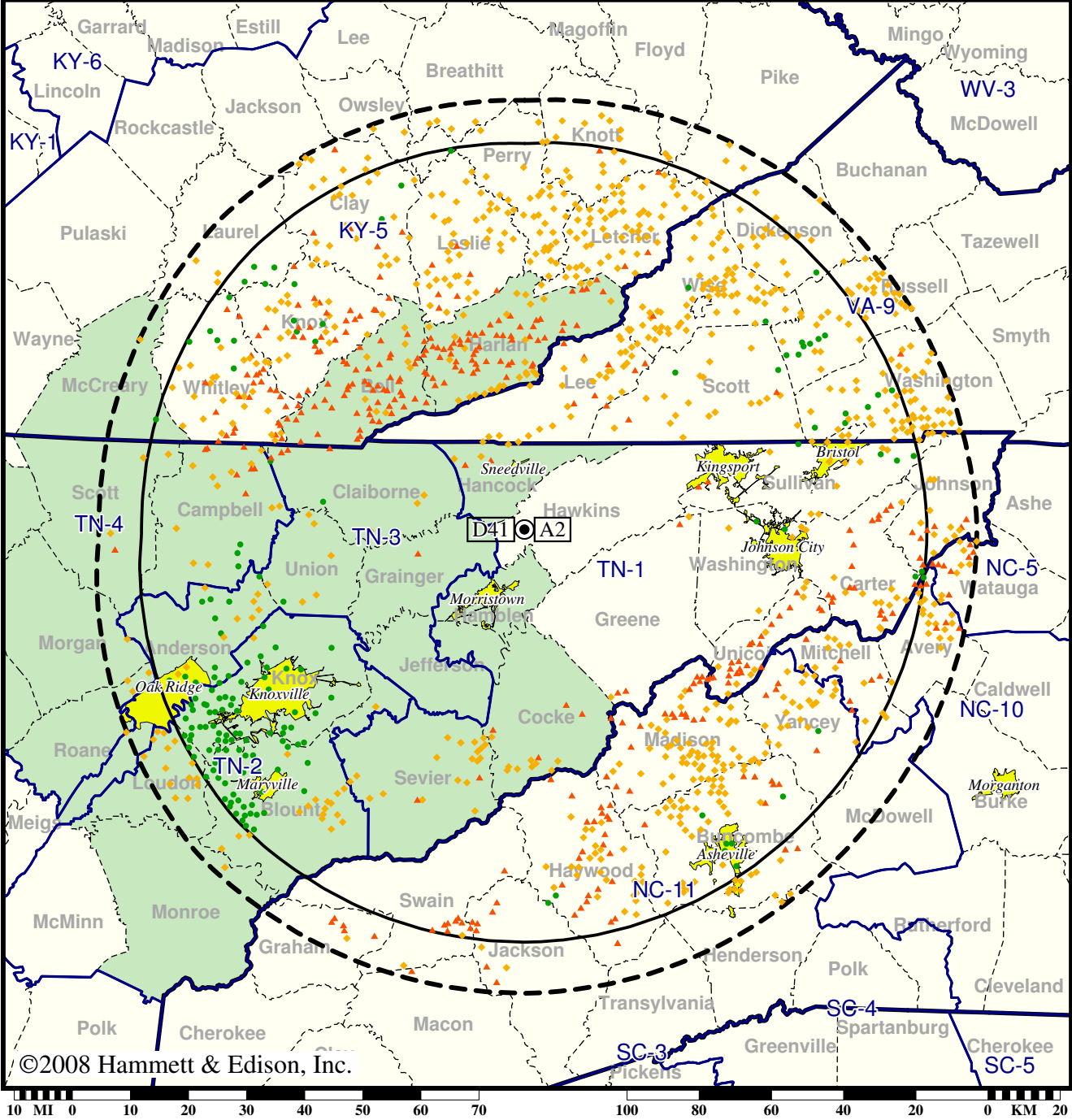
- Coverage gained after DTV transition
- (no symbol) No change in coverage
- ▲ Coverage lost after DTV transition

Station WETP-TV • Analog Channel 2, DTV Channel 41 • Sneedville, TN

Expected Change In Coverage: Licensed Operation

Licensed (solid): 445 kW ERP at 567 m HAAT, Network: PBS
 vs. Analog (dashed): 100 kW ERP at 536 m HAAT, Network: PBS

Market: Knoxville, TN



©2008 Hammett & Edison, Inc.

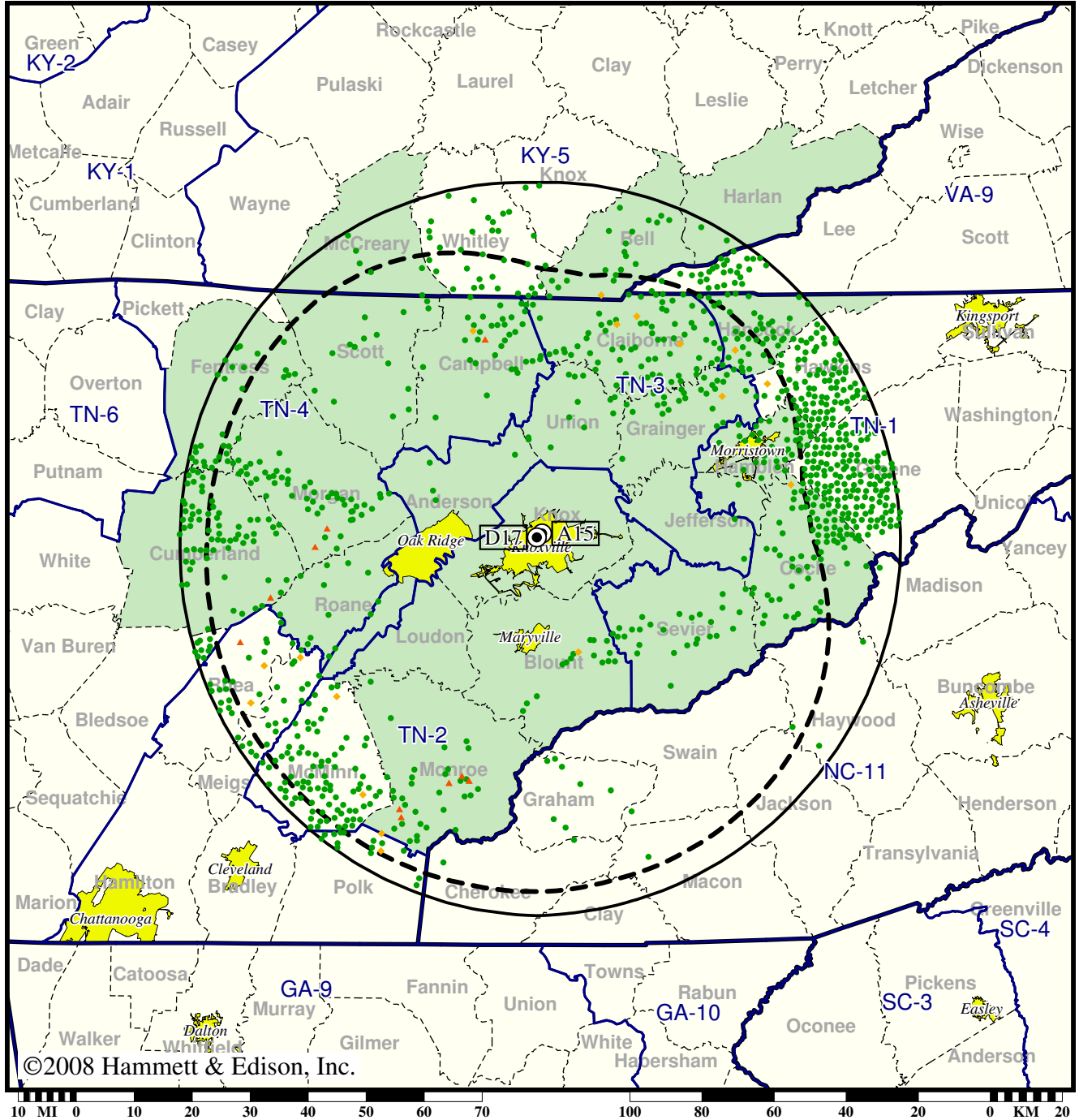
- Coverage gained after DTV transition
- (no symbol) No change in coverage
- ◆ Coverage lost but still served by same network
- ▲ Coverage lost and no other service by same network

Station WKOP-TV • Analog Channel 15, DTV Channel 17 • Knoxville, TN

Expected Change In Coverage: Licensed Operation

Licensed (solid): 100 kW ERP at 551 m HAAT, Network: PBS
vs. Analog (dashed): 2240 kW ERP at 513 m HAAT, Network: PBS

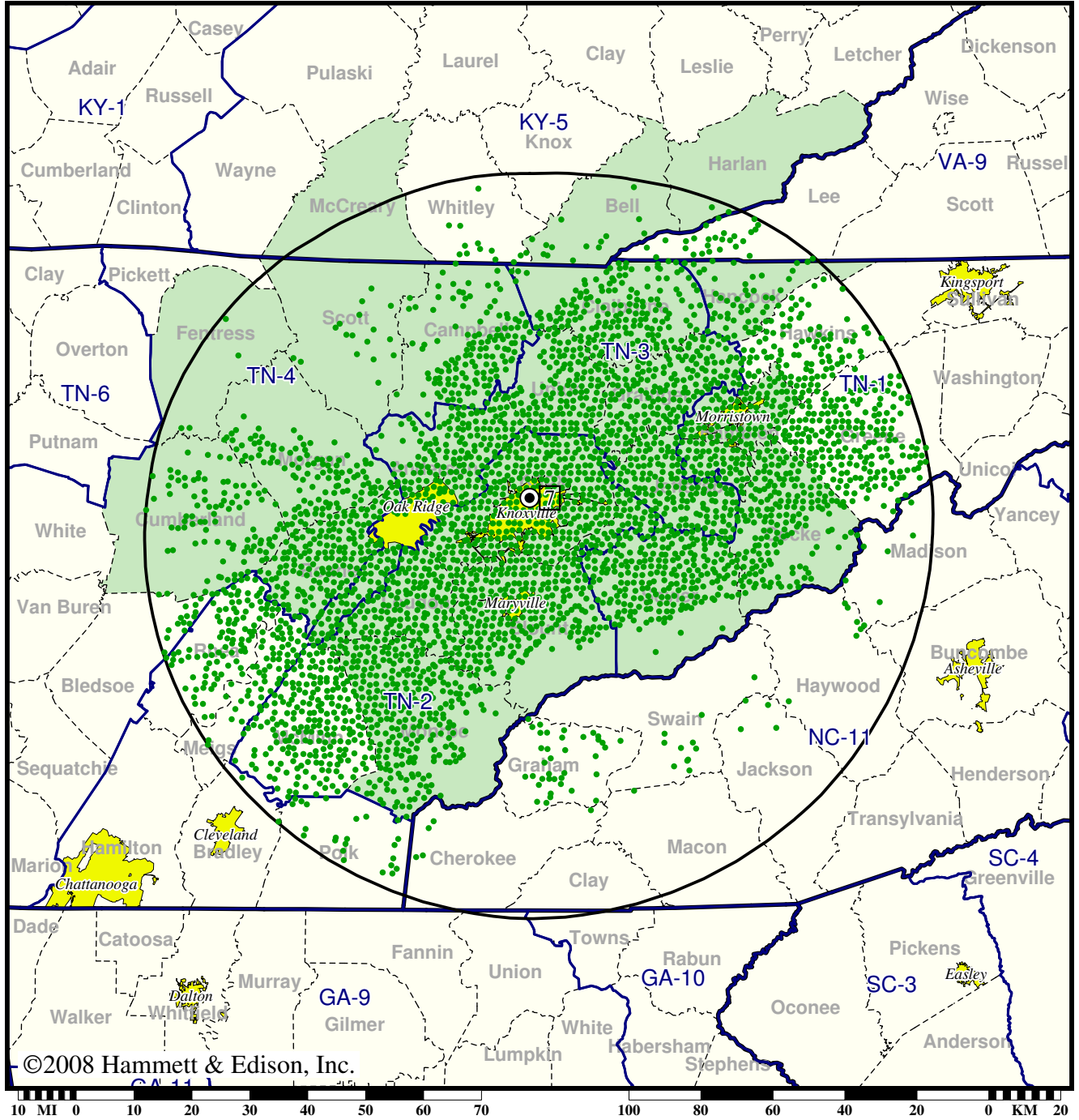
Market: Knoxville, TN



©2008 Hammett & Edison, Inc.

- Coverage gained after DTV transition
- (no symbol) No change in coverage
- ◆ Coverage lost but still served by same network
- ▲ Coverage lost and no other service by same network

DTV Station WMAK • Channel 7 • Knoxville, TN
Expected Change In Coverage: Licensed Operation
Licensed (solid): 55.0 kW ERP at 382 m HAAT
Market: Knoxville, TN



©2008 Hammett & Edison, Inc.

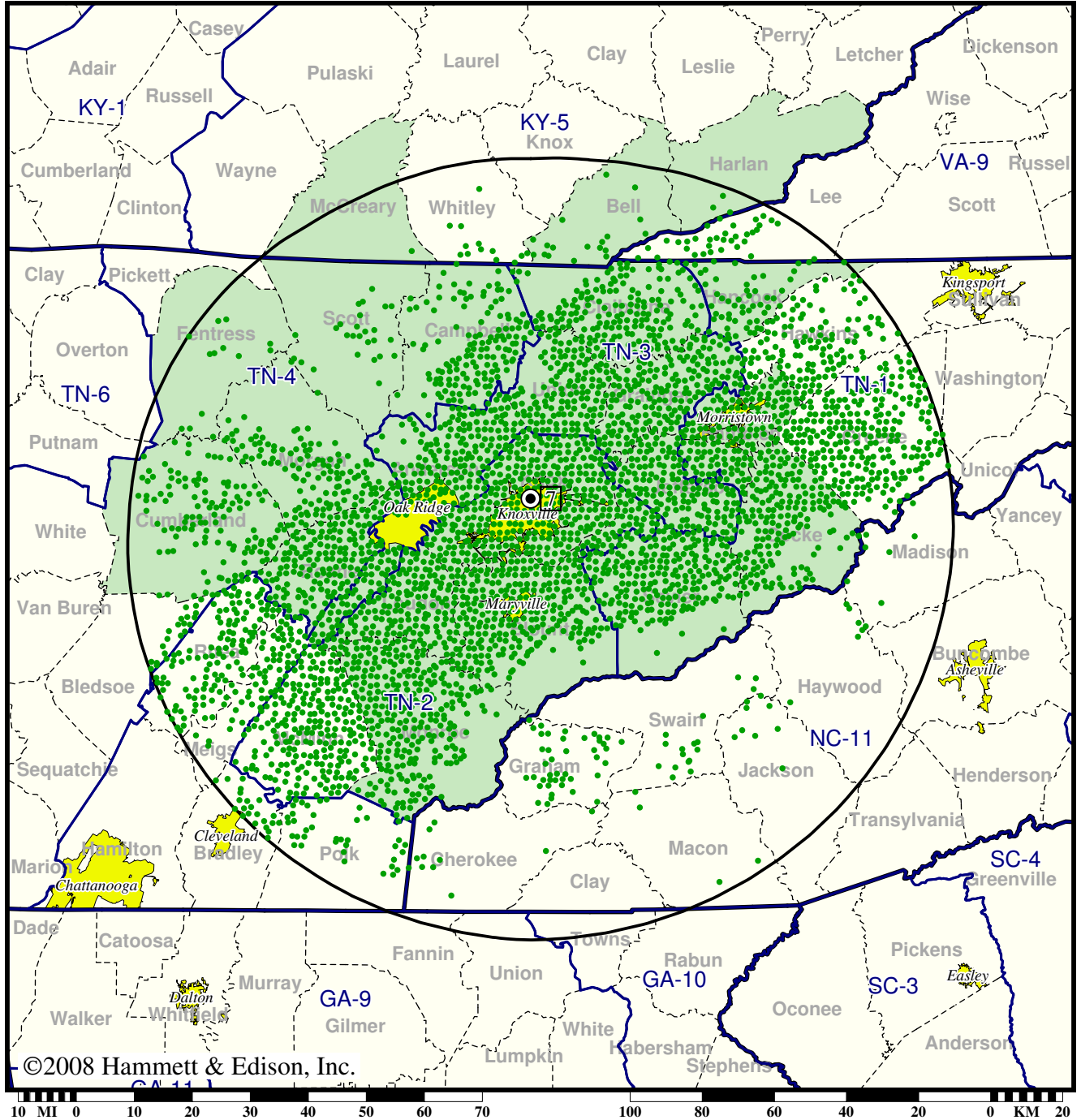
- Coverage gained after DTV transition
- (no symbol) No change in coverage

DTV Station WMAK • Channel 7 • Knoxville, TN

Expected Change In Coverage: Granted Construction Permit

CP (solid): 95.0 kW ERP at 382 m HAAT

Market: Knoxville, TN



©2008 Hammett & Edison, Inc.

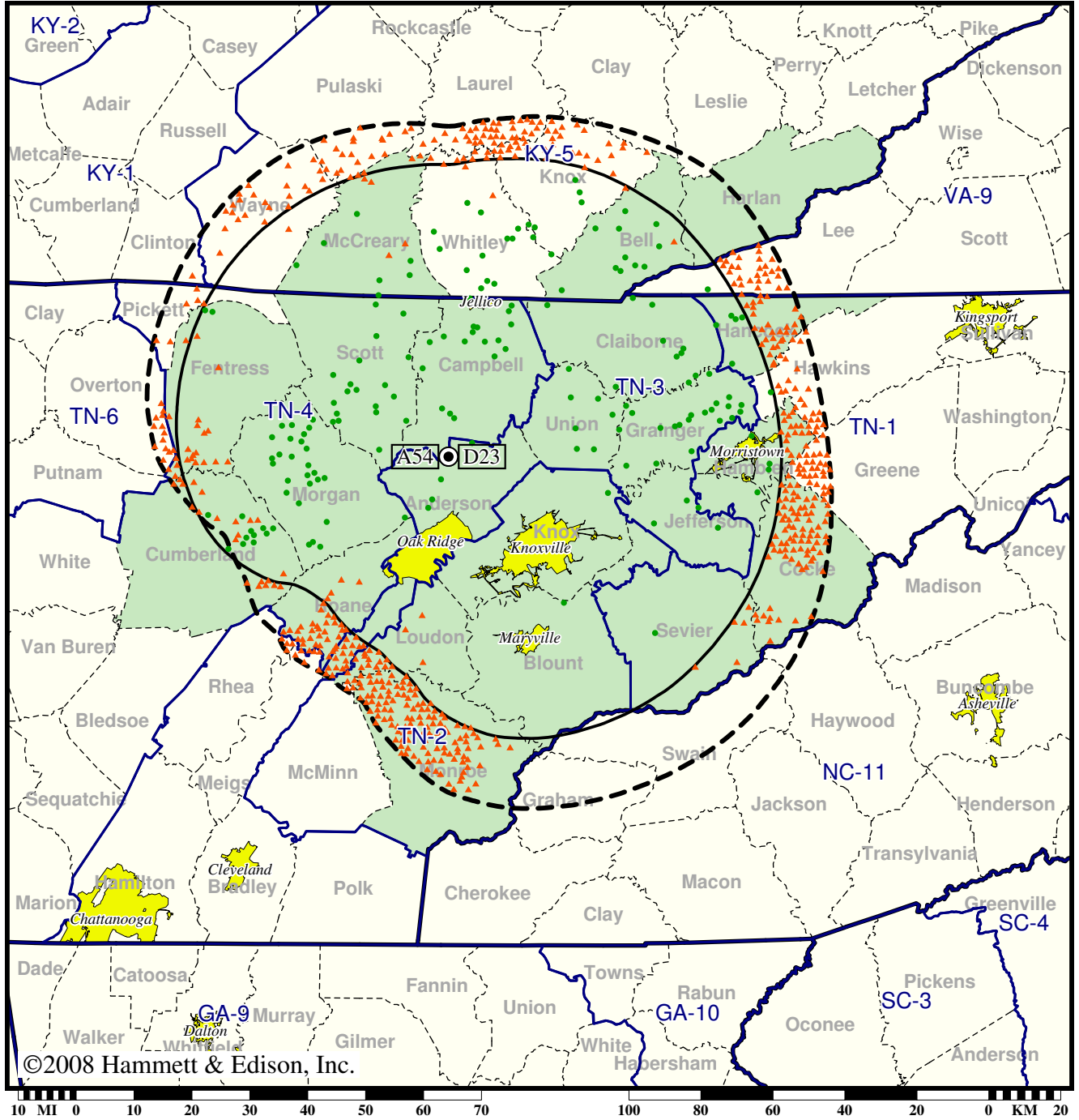
- Coverage gained after DTV transition
- (no symbol) No change in coverage

TV Station WPXK • Analog Channel 54, DTV Channel 23 • Jellico, TN

Expected Change In Coverage: Licensed Operation

Licensed (solid): 18.0 kW ERP at 608 m HAAT
vs. Analog (dashed): 4900 kW ERP at 618 m HAAT

Market: Knoxville, TN



©2008 Hammett & Edison, Inc.

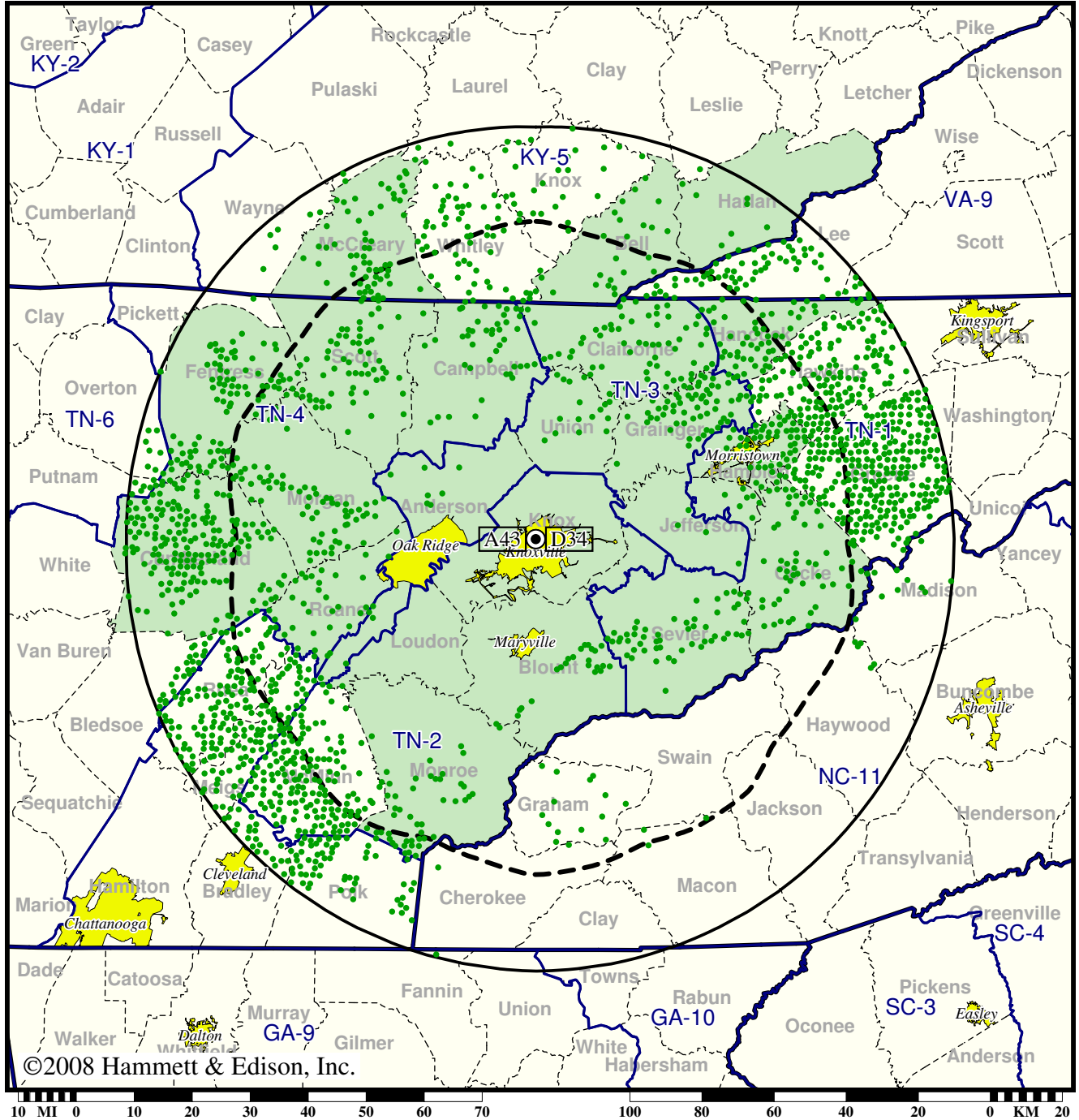
- Coverage gained after DTV transition
- (no symbol) No change in coverage
- ▲ Coverage lost after DTV transition

TV Station WTNZ • Analog Channel 43, DTV Channel 34 • Knoxville, TN

Expected Change In Coverage: Granted Construction Permit

CP (solid): 930 kW ERP at 527 m HAAT, Network: Fox
vs. Analog (dashed): 1960 kW ERP at 529 m HAAT, Network: Fox

Market: Knoxville, TN



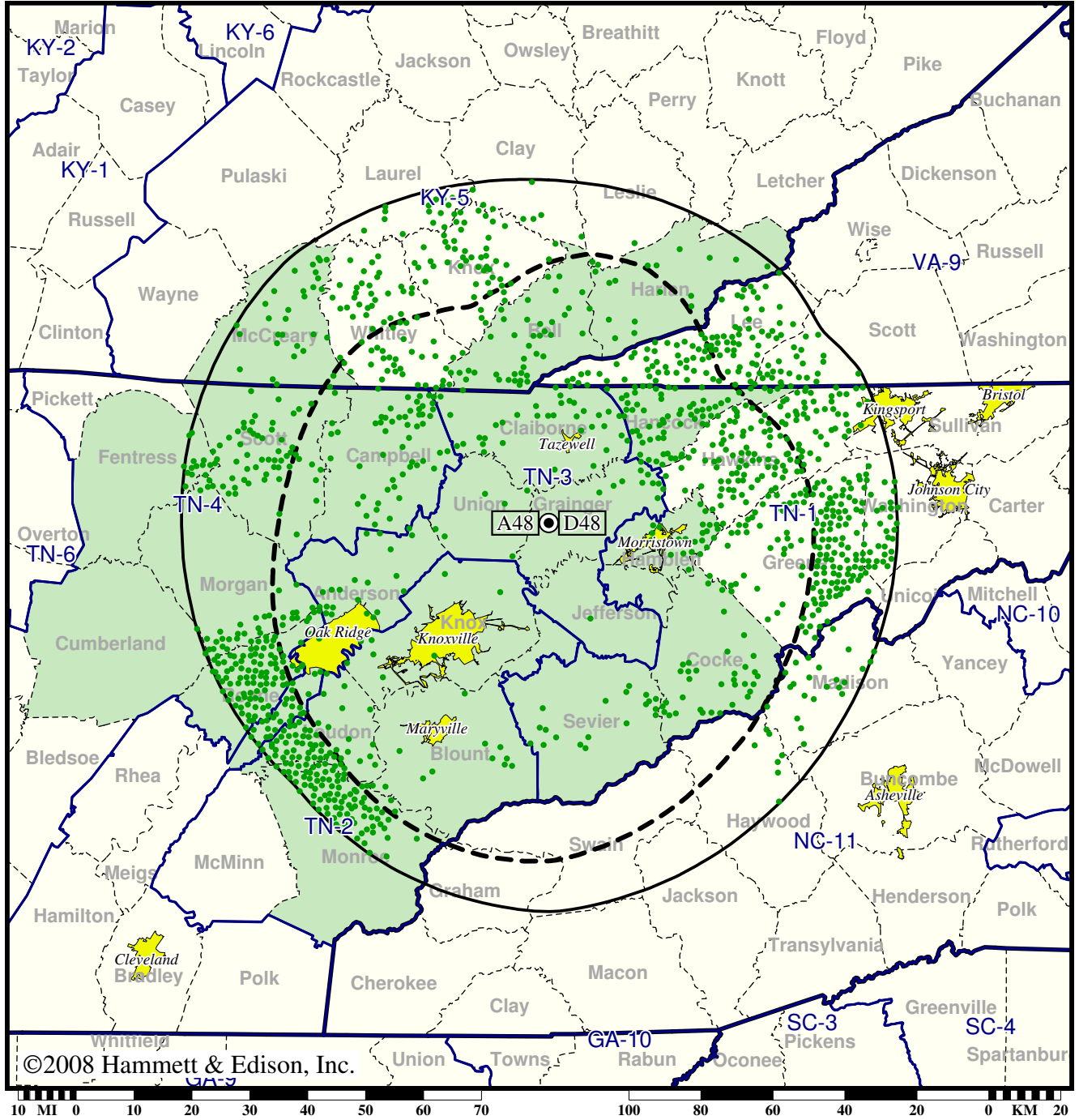
- Coverage gained after DTV transition
- (no symbol) No change in coverage

TV Station WVLR • Analog Channel 48, DTV Channel 48 • Tazewell, TN

Expected Change In Coverage: Granted Construction Permit

CP (solid): 1000 kW ERP at 430 m HAAT
vs. Analog (dashed): 5000 kW ERP at 431 m HAAT

Market: Knoxville, TN



©2008 Hammett & Edison, Inc.

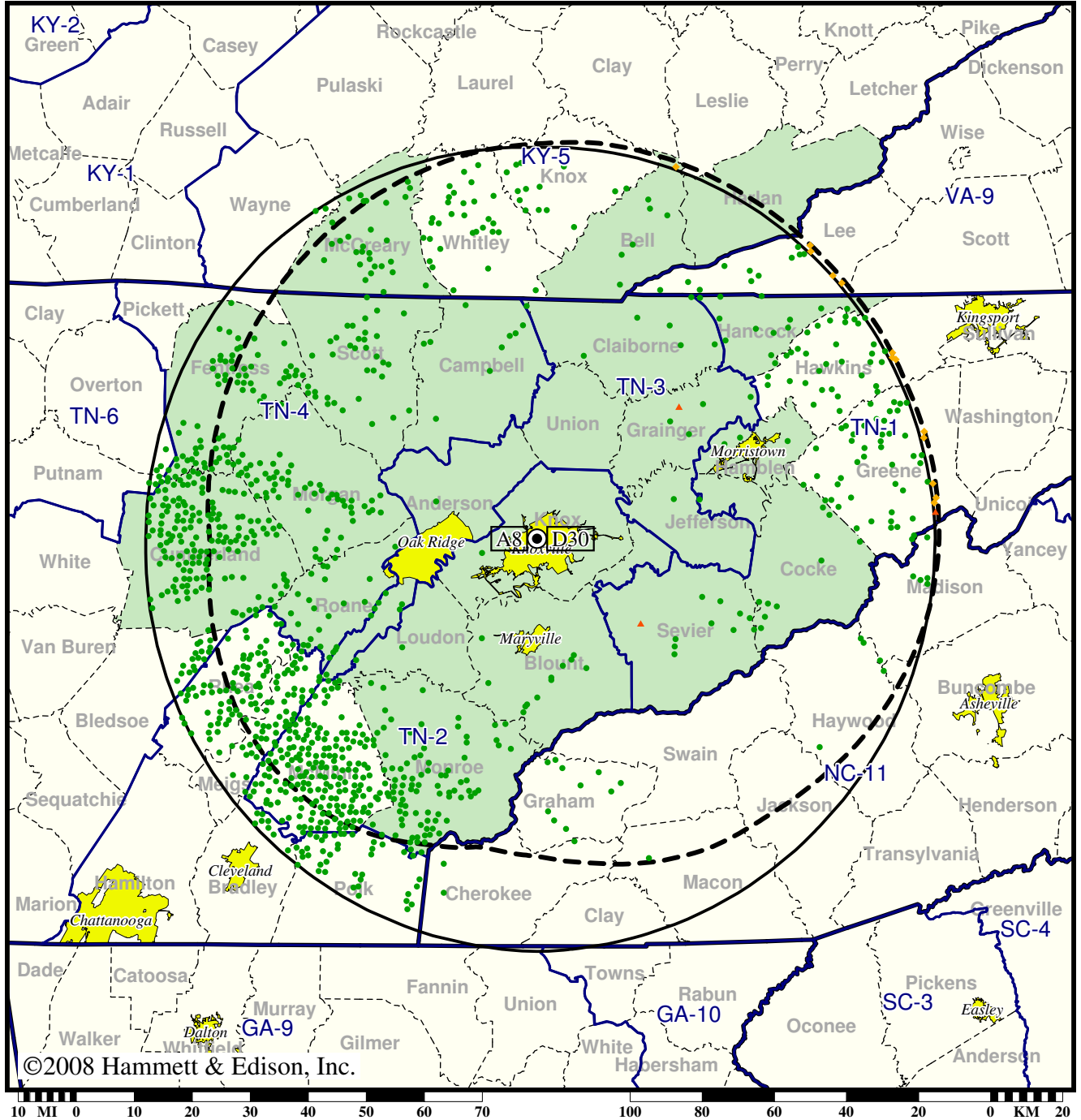
- Coverage gained after DTV transition
- (no symbol) No change in coverage

Station WVLT-TV • Analog Channel 8, DTV Channel 30 • Knoxville, TN

Expected Change In Coverage: Licensed Operation

Licensed (solid): 398 kW ERP at 551 m HAAT, Network: CBS
vs. Analog (dashed): 316 kW ERP at 510 m HAAT, Network: CBS

Market: Knoxville, TN



- Coverage gained after DTV transition
- (no symbol) No change in coverage
- ◆ Coverage lost but still served by same network
- ▲ Coverage lost and no other service by same network