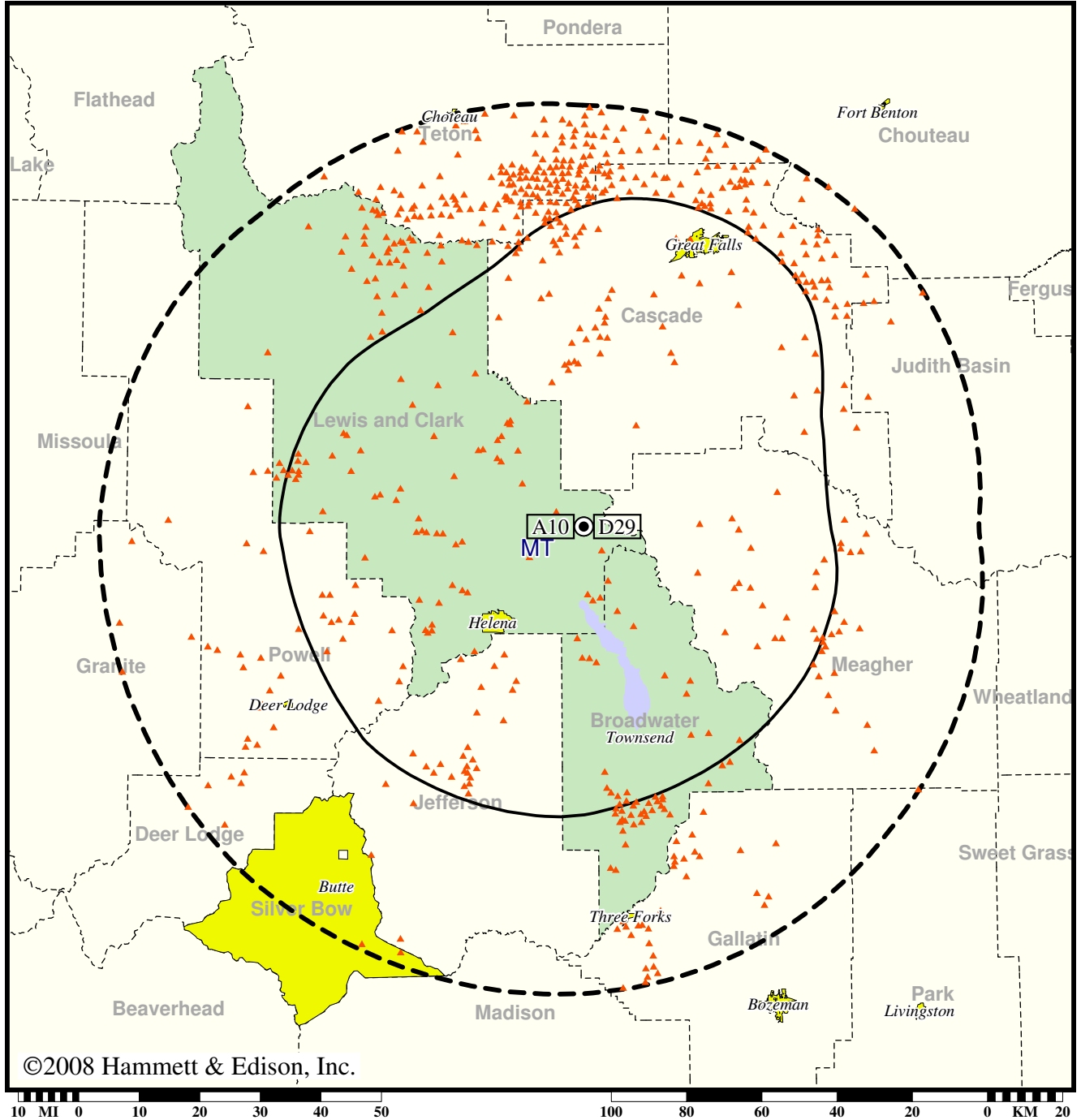


TV Station KMTF • Analog Channel 10, DTV Channel 29 • Helena, MT

Expected Change In Coverage: Post-Transition Appendix B Facility

Appendix B (solid): 43.4 kW ERP at 697 m HAAT  
vs. Analog (dashed): 217 kW ERP at 711 m HAAT

Market: Helena, MT



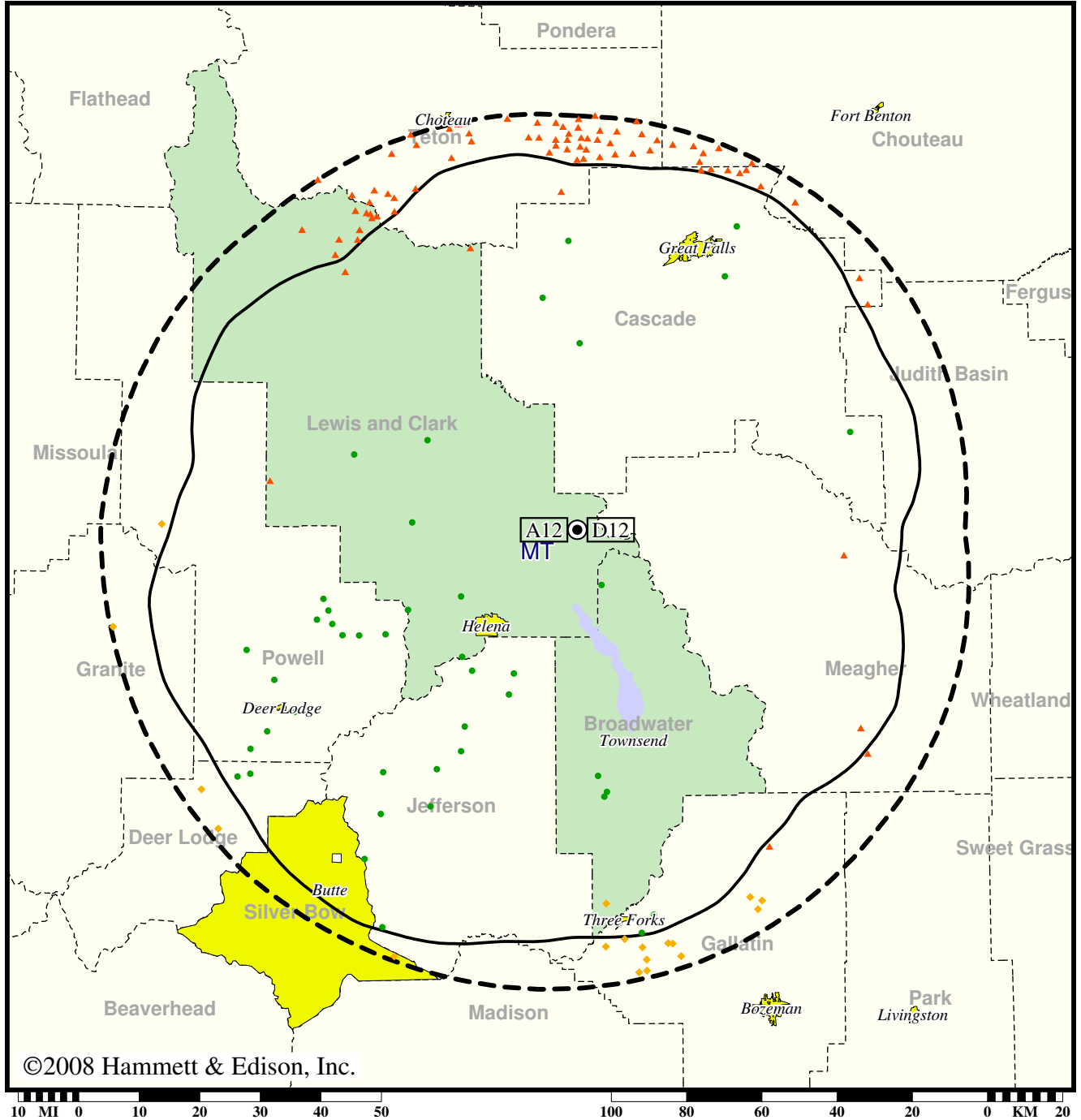
- (no symbol) No change in coverage
- ▲ Coverage lost after DTV transition

TV Station KTVH • Analog Channel 12, DTV Channel 12 • Helena, MT

Expected Change In Coverage: Post-Transition Appendix B Facility

Appendix B (solid): 9.36 kW ERP at 697 m HAAT, Network: NBC  
vs. Analog (dashed): 180 kW ERP at 711 m HAAT, Network: NBC

Market: Helena, MT



- Coverage gained after DTV transition
- (no symbol) No change in coverage
- ◆ Coverage lost but still served by same network
- ▲ Coverage lost and no other service by same network