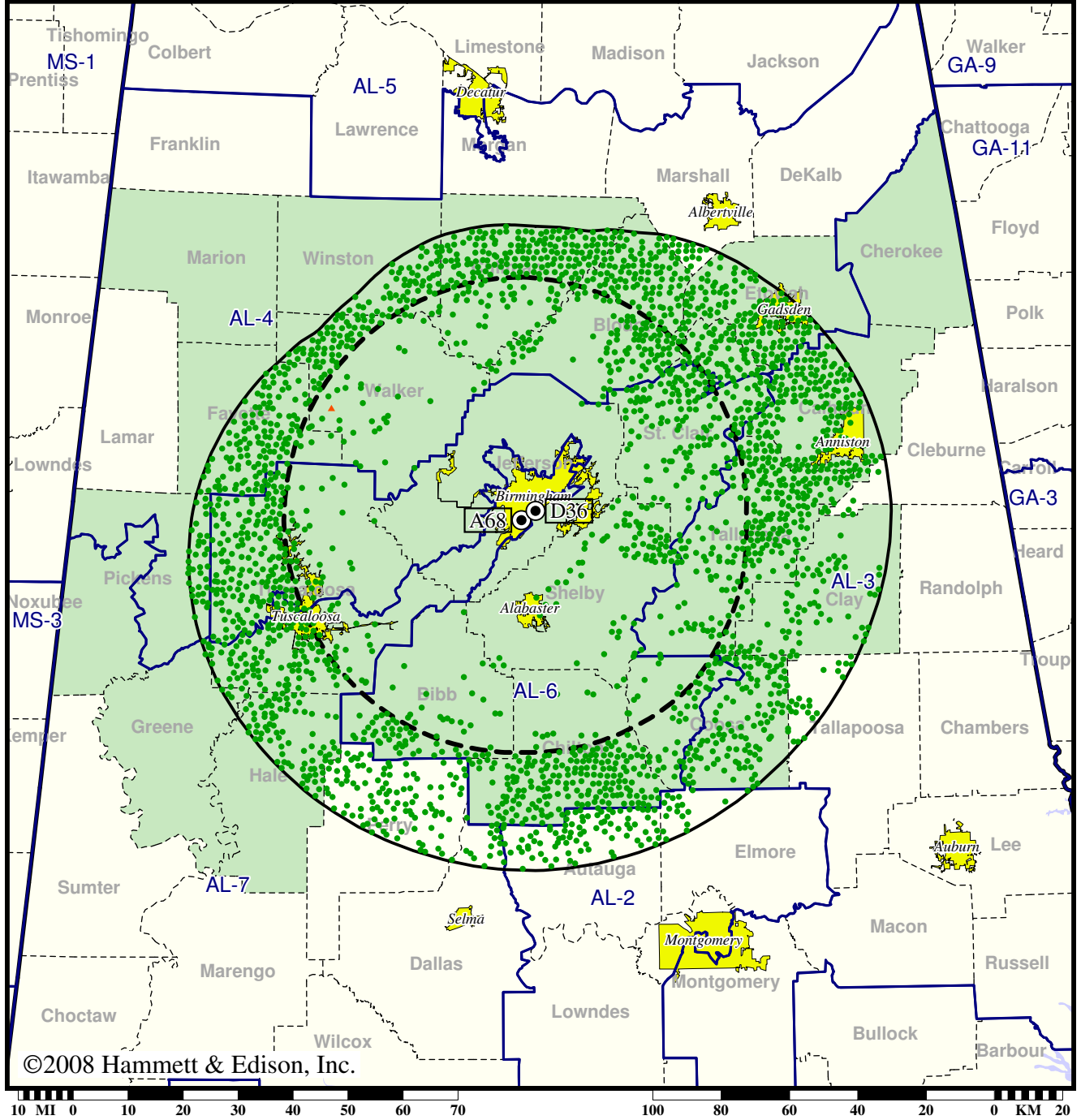


TV Station WABM • Analog Channel 68, DTV Channel 36 • Birmingham, AL

Expected Change In Coverage: Licensed Operation

Licensed (solid): 885 kW ERP at 406 m HAAT
vs. Analog (dashed): 1450 kW ERP at 314 m HAAT

Market: Birmingham, AL



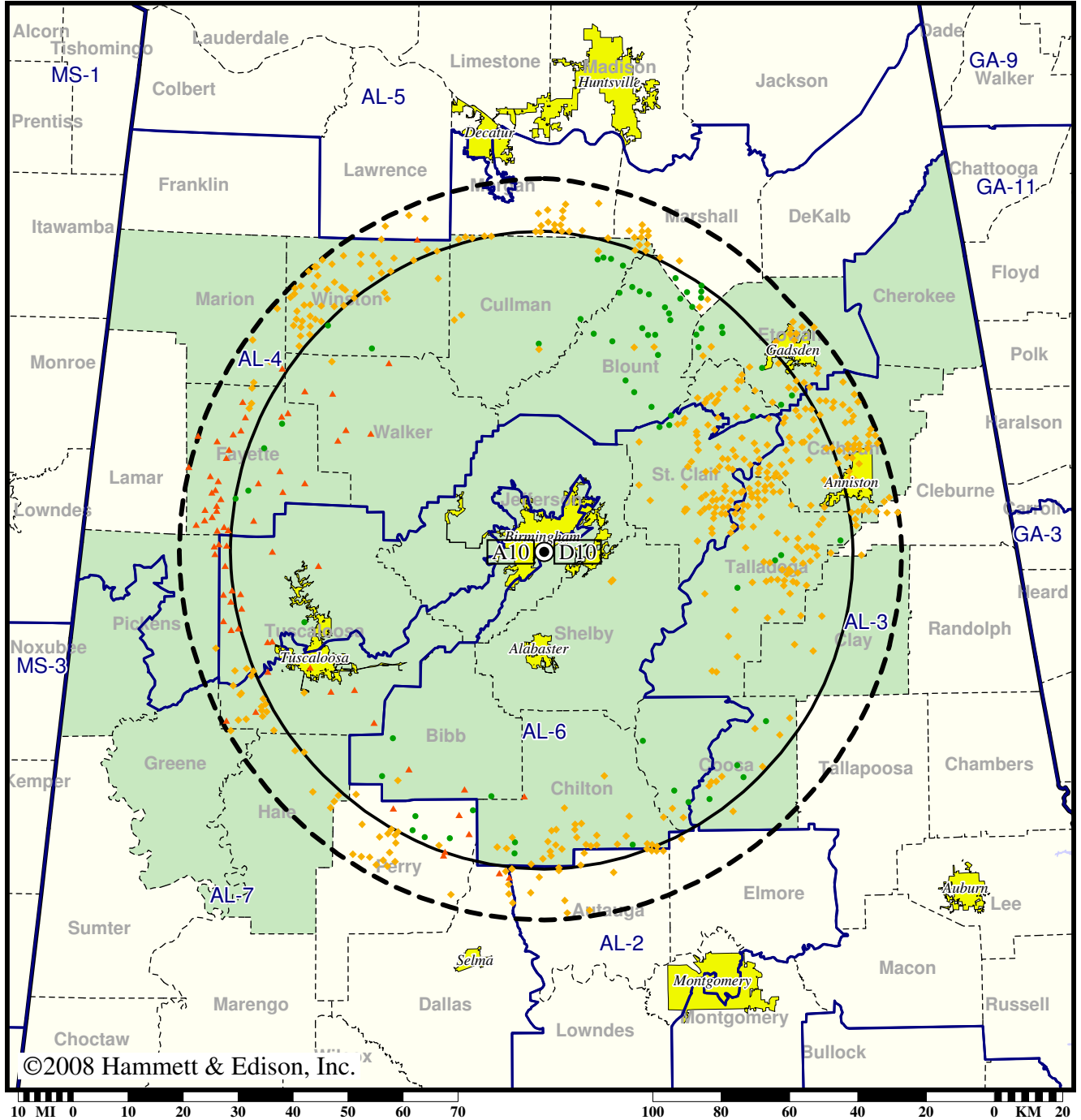
- Coverage gained after DTV transition
- (no symbol) No change in coverage
- ▲ Coverage lost after DTV transition

TV Station WBIQ • Analog Channel 10, DTV Channel 10 • Birmingham, AL

Expected Change In Coverage: Granted Construction Permit

CP (solid): 3.00 kW ERP at 426 m HAAT, Network: PBS
vs. Analog (dashed): 316 kW ERP at 426 m HAAT, Network: PBS

Market: Birmingham, AL



©2008 Hammett & Edison, Inc.

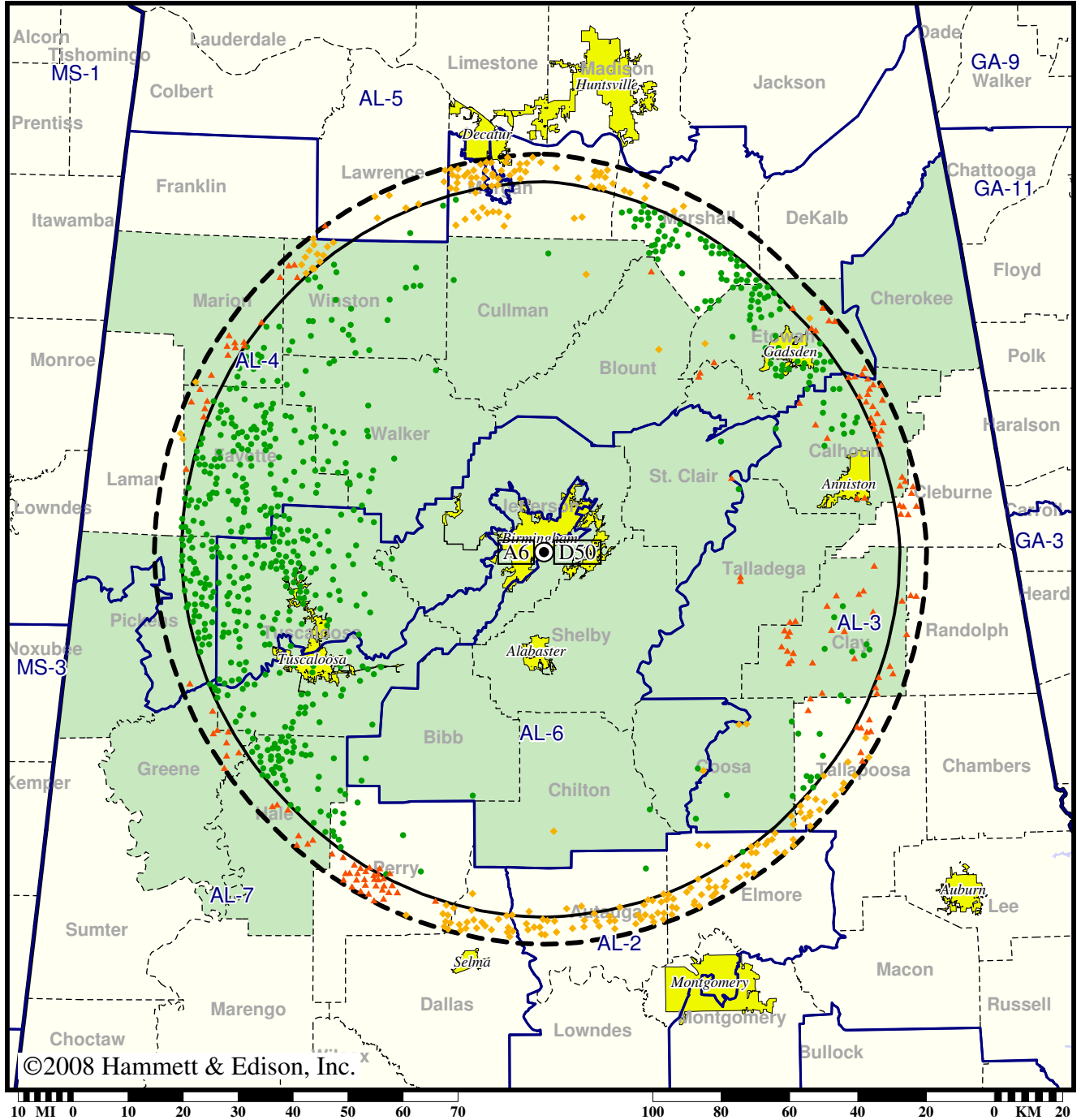
- Coverage gained after DTV transition
- (no symbol) No change in coverage
- ◆ Coverage lost but still served by same network
- ▲ Coverage lost and no other service by same network

TV Station WBRC • Analog Channel 6, DTV Channel 50 • Birmingham, AL

Expected Change In Coverage: Granted Construction Permit

CP (solid): 953 kW ERP at 422 m HAAT, Network: Fox
vs. Analog (dashed): 100 kW ERP at 420 m HAAT, Network: Fox

Market: Birmingham, AL



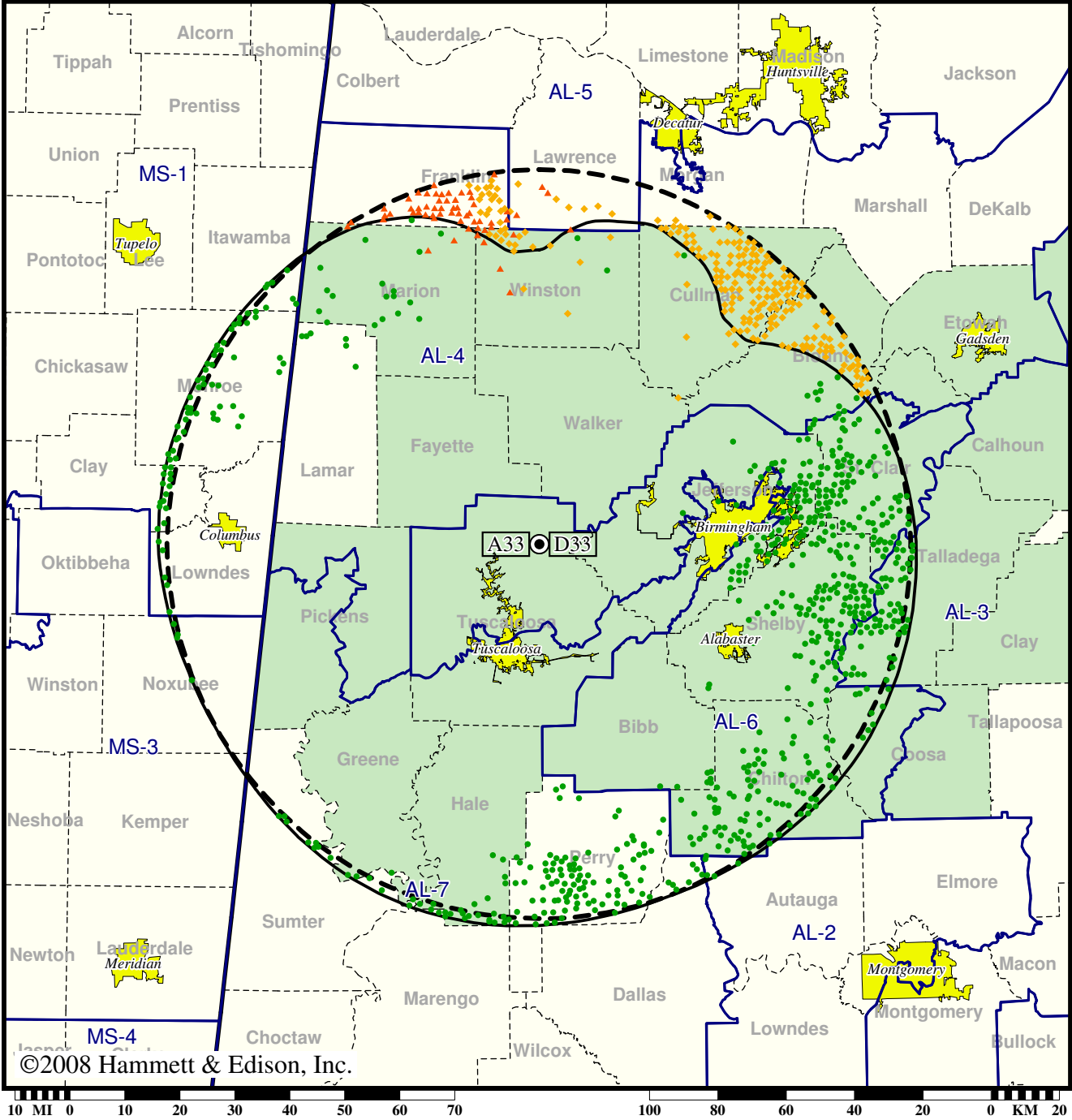
- Coverage gained after DTV transition
- (no symbol) No change in coverage
- ◆ Coverage lost but still served by same network
- ▲ Coverage lost and no other service by same network

Station WCFT-TV • Analog Channel 33, DTV Channel 33 • Tuscaloosa, AL

Expected Change In Coverage: Granted Construction Permit

CP (solid): 278 kW ERP at 657 m HAAT, Network: ABC
 vs. Analog (dashed): 4370 kW ERP at 662 m HAAT, Network: ABC

Market: Birmingham, AL



©2008 Hammett & Edison, Inc.

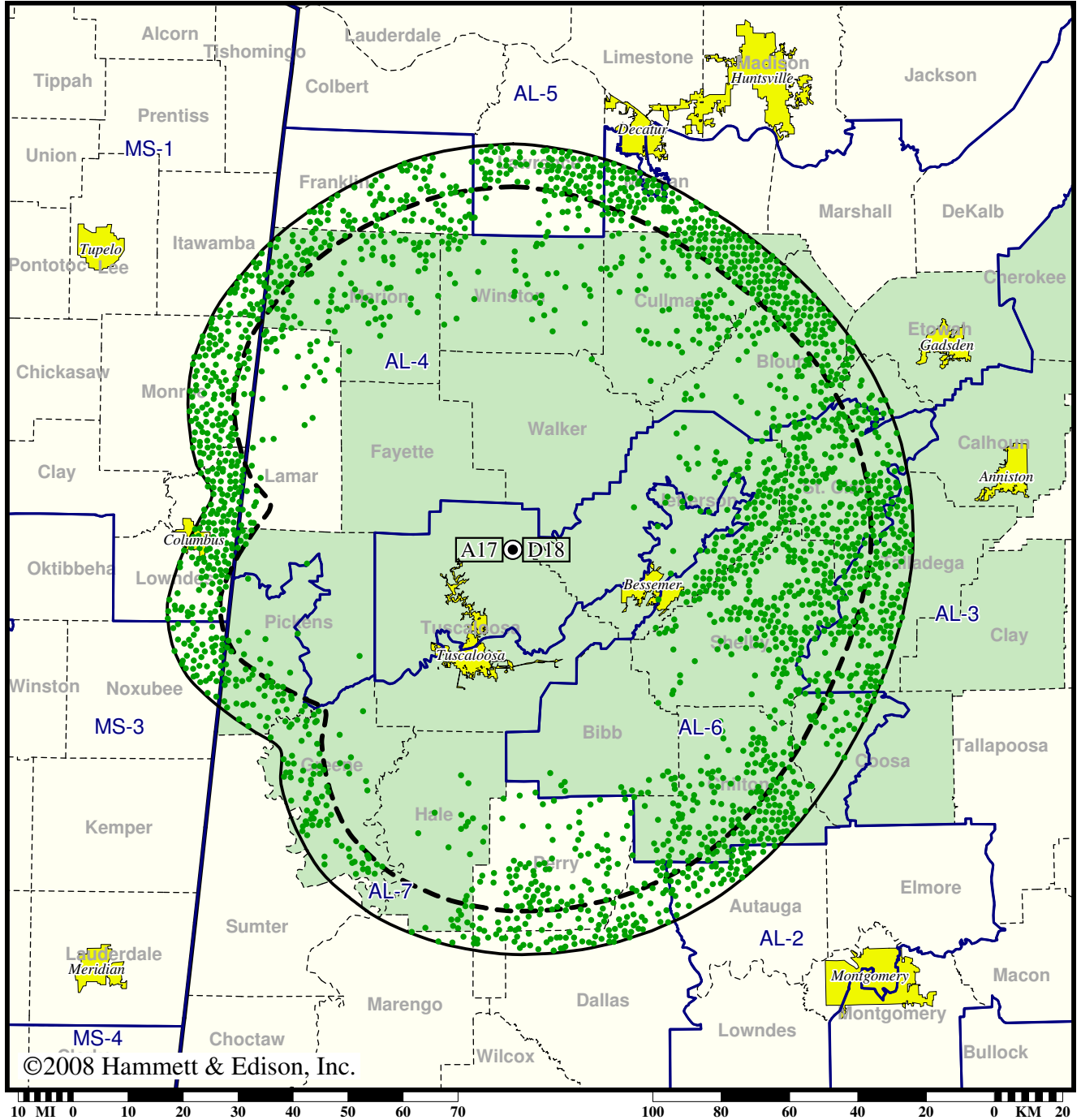
- Coverage gained after DTV transition
- (no symbol) No change in coverage
- ◆ Coverage lost but still served by same network
- ▲ Coverage lost and no other service by same network

TV Station WDBB • Analog Channel 17, DTV Channel 18 • Bessemer, AL

Expected Change In Coverage: Licensed Operation

Licensed (solid): 350 kW ERP at 675 m HAAT
vs. Analog (dashed): 2240 kW ERP at 675 m HAAT

Market: Birmingham, AL



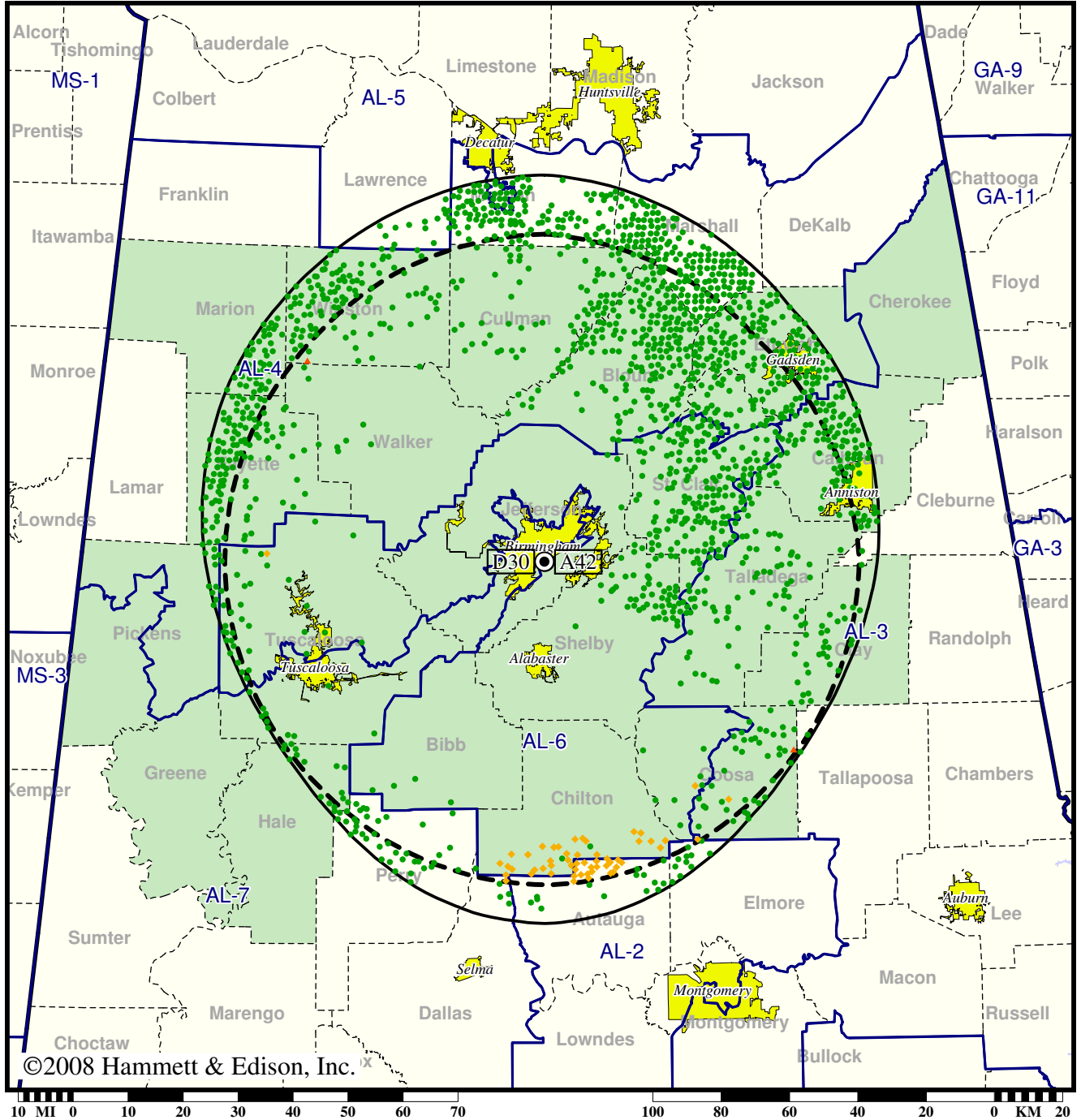
● Coverage gained after DTV transition
(no symbol) No change in coverage

TV Station WIAT • Analog Channel 42, DTV Channel 30 • Birmingham, AL

Expected Change In Coverage: Licensed Operation

Licensed (solid): 1000 kW ERP at 426 m HAAT, Network: CBS
vs. Analog (dashed): 5000 kW ERP at 421 m HAAT, Network: CBS

Market: Birmingham, AL



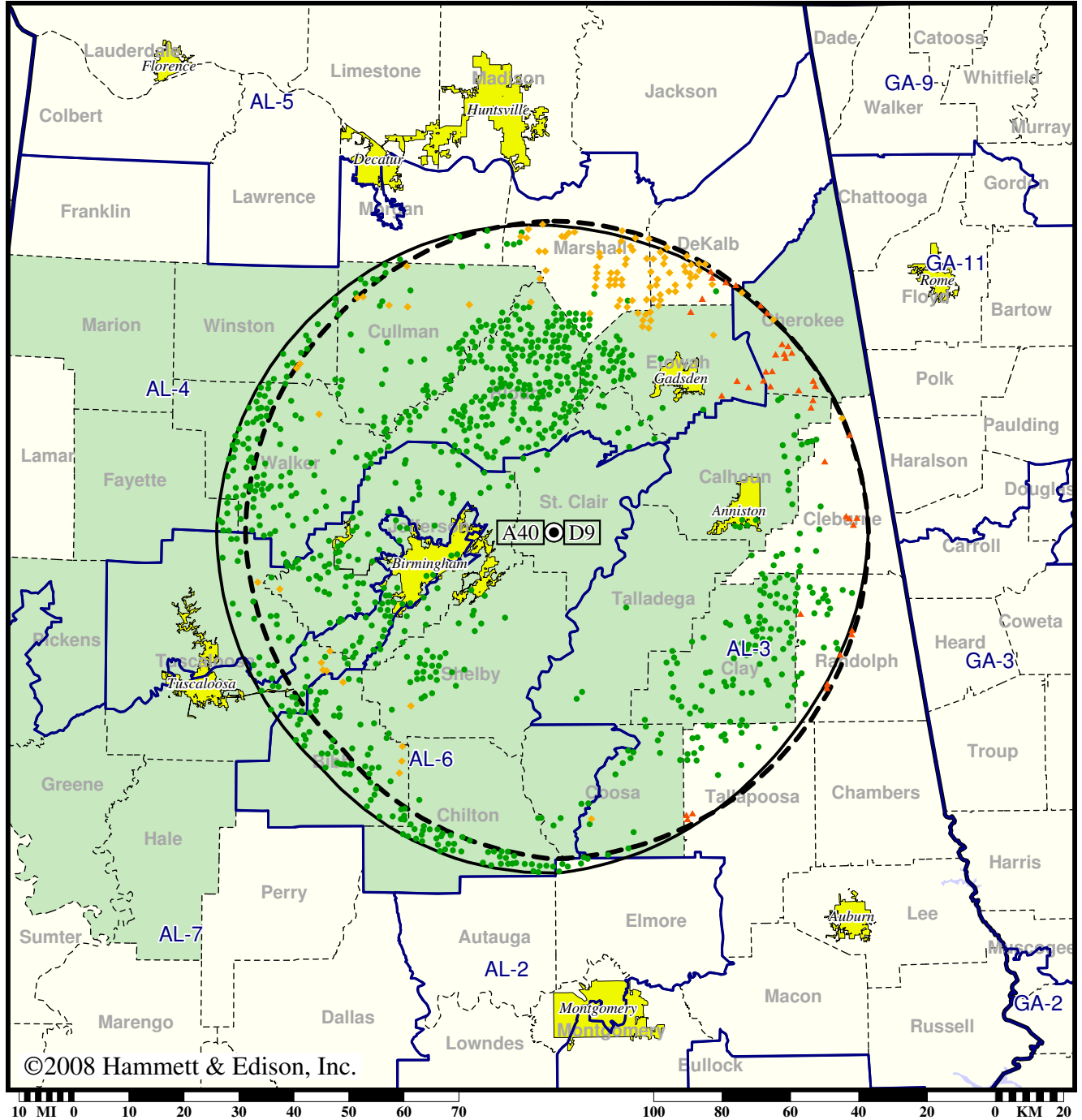
- Coverage gained after DTV transition
- (no symbol) No change in coverage
- ◆ Coverage lost but still served by same network
- ▲ Coverage lost and no other service by same network

Station WJSU-TV • Analog Channel 40, DTV Channel 9 • Anniston, AL

Expected Change In Coverage: Licensed Operation

Licensed (solid): 15.6 kW ERP at 359 m HAAT, Network: ABC
vs. Analog (dashed): 5000 kW ERP at 396 m HAAT, Network: ABC

Market: Birmingham, AL



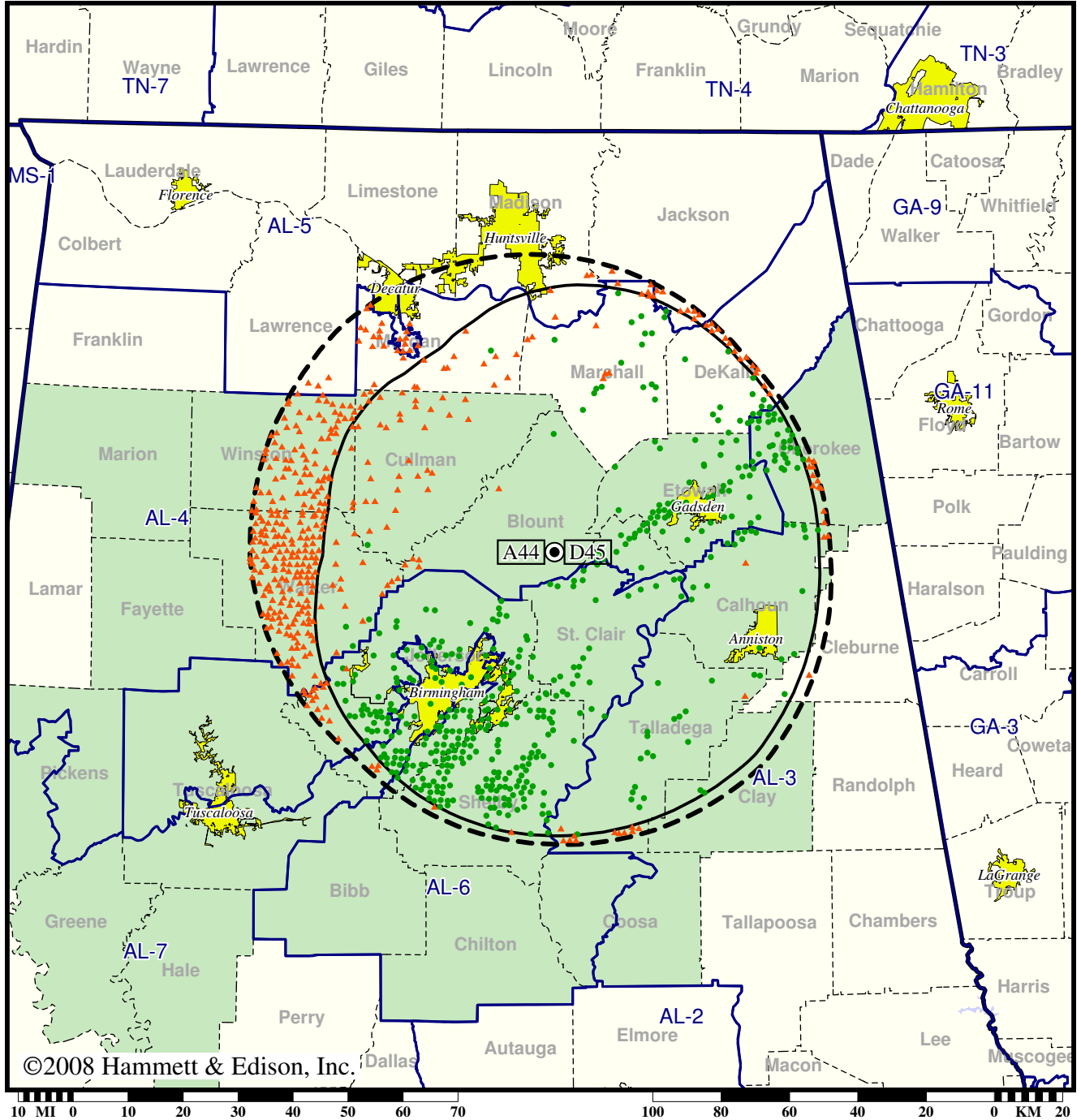
- Coverage gained after DTV transition
- (no symbol) No change in coverage
- ◆ Coverage lost but still served by same network
- ▲ Coverage lost and no other service by same network

TV Station WPXH • Analog Channel 44, DTV Channel 45 • Gadsden, AL

Expected Change In Coverage: Licensed Operation

Licensed (solid): 225 kW ERP at 309 m HAAT
vs. Analog (dashed): 5000 kW ERP at 340 m HAAT

Market: Birmingham, AL



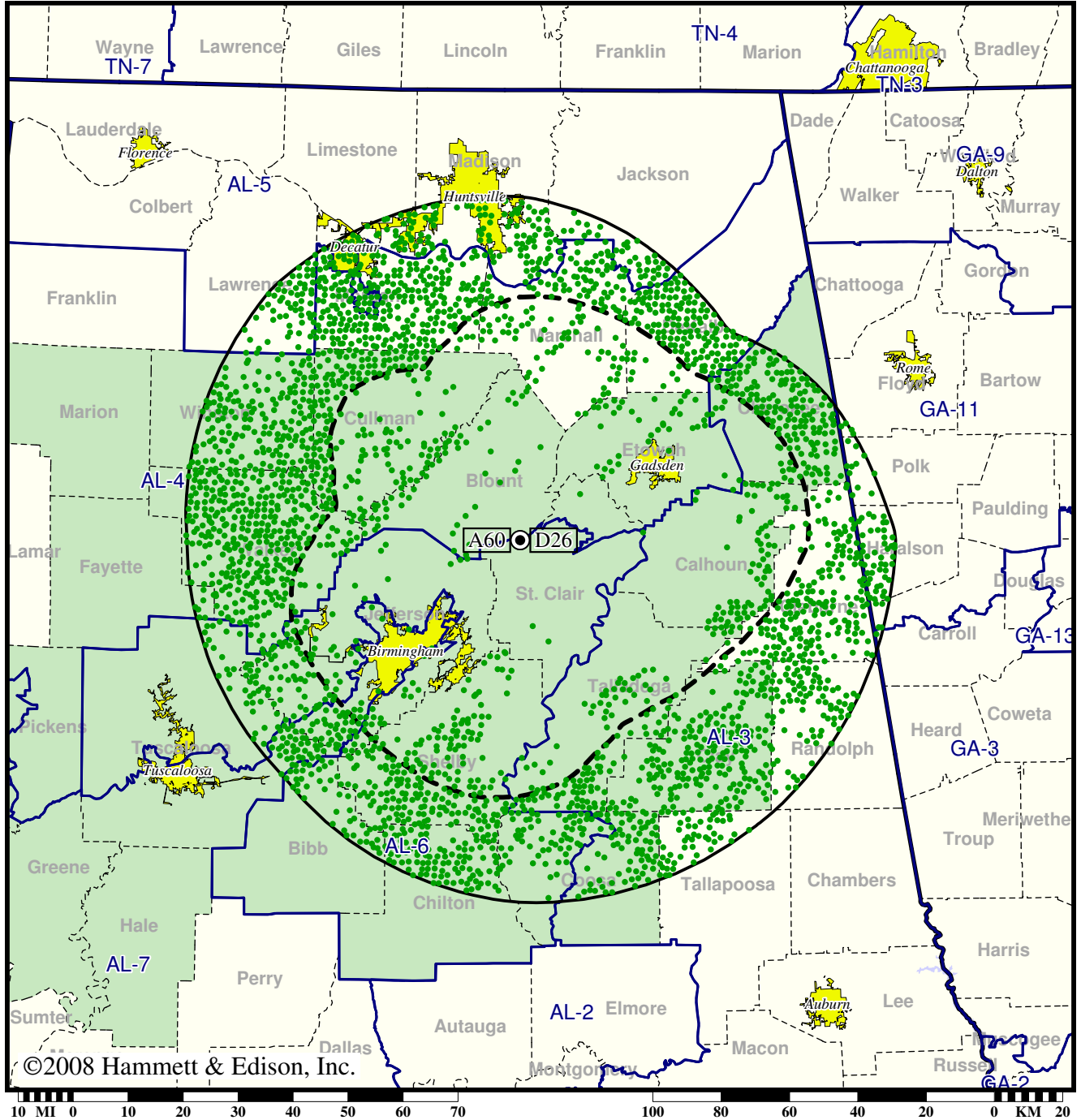
- Coverage gained after DTV transition
- (no symbol) No change in coverage
- ▲ Coverage lost after DTV transition

Station WTJP-TV • Analog Channel 60, DTV Channel 26 • Gadsden, AL

Expected Change In Coverage: Granted Construction Permit

CP (solid): 1000 kW ERP at 329 m HAAT
vs. Analog (dashed): 5000 kW ERP at 352 m HAAT

Market: Birmingham, AL



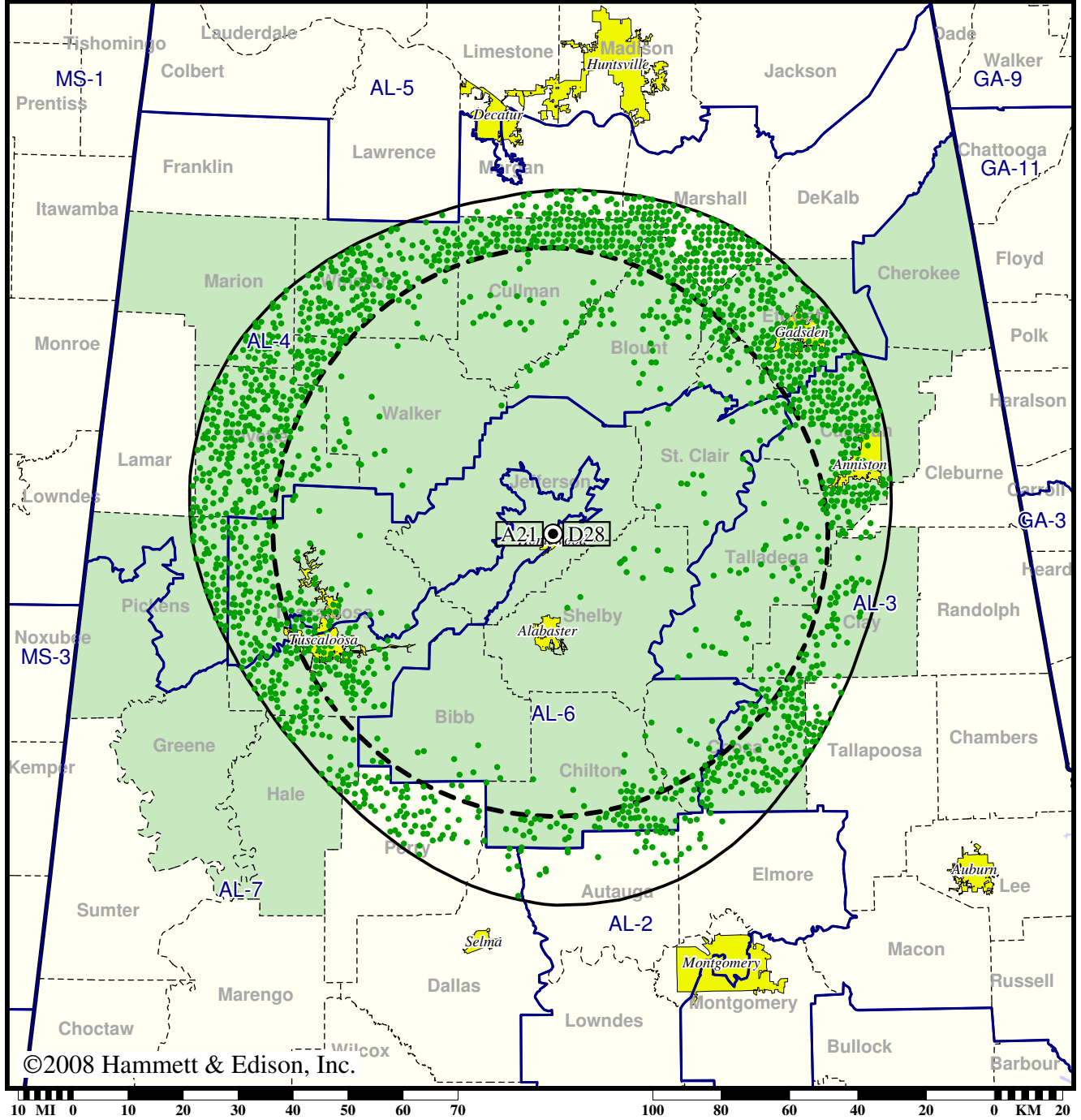
- Coverage gained after DTV transition
- (no symbol) No change in coverage

TV Station WTTO • Analog Channel 21, DTV Channel 28 • Homewood, AL

Expected Change In Coverage: Post-Transition Appendix B Facility

Appendix B (solid): 765 kW ERP at 427 m HAAT
vs. Analog (dashed): 1050 kW ERP at 408 m HAAT

Market: Birmingham, AL



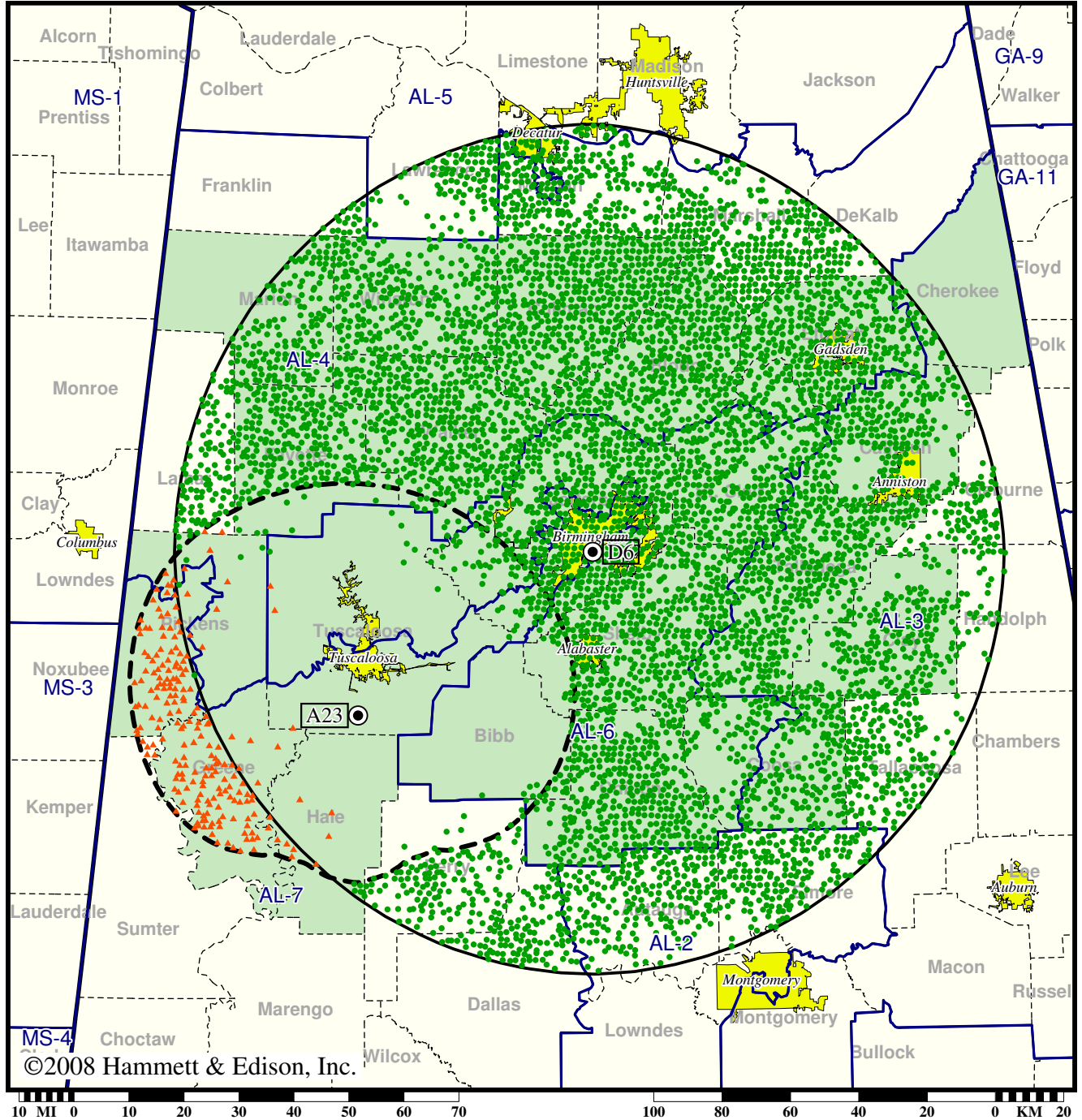
- Coverage gained after DTV transition
- (no symbol) No change in coverage

TV Station WUOA • Analog Channel 23, DTV Channel 6 • Tuscaloosa, AL

Expected Change In Coverage: Granted Construction Permit

CP (solid): 26.0 kW ERP at 395 m HAAT
vs. Analog (dashed): 890 kW ERP at 266 m HAAT

Market: Birmingham, AL



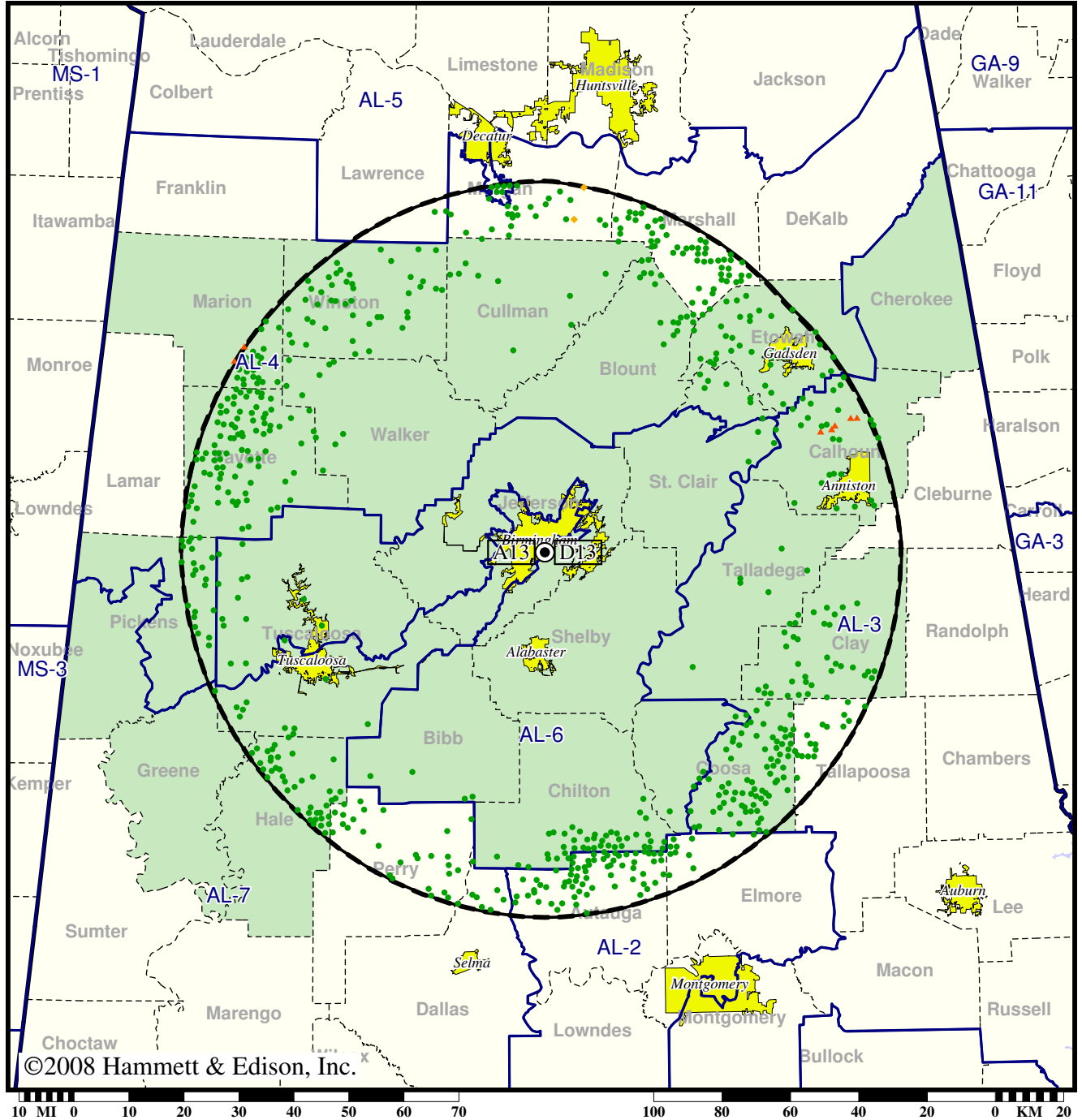
- Coverage gained after DTV transition
- (no symbol) No change in coverage
- ▲ Coverage lost after DTV transition

Station WVTM-TV • Analog Channel 13, DTV Channel 13 • Birmingham, AL

Expected Change In Coverage: Granted Construction Permit

CP (solid): 20.0 kW ERP at 403 m HAAT, Network: NBC
 vs. Analog (dashed): 316 kW ERP at 408 m HAAT, Network: NBC

Market: Birmingham, AL



- Coverage gained after DTV transition
- (no symbol) No change in coverage
- ◆ Coverage lost but still served by same network
- ▲ Coverage lost and no other service by same network