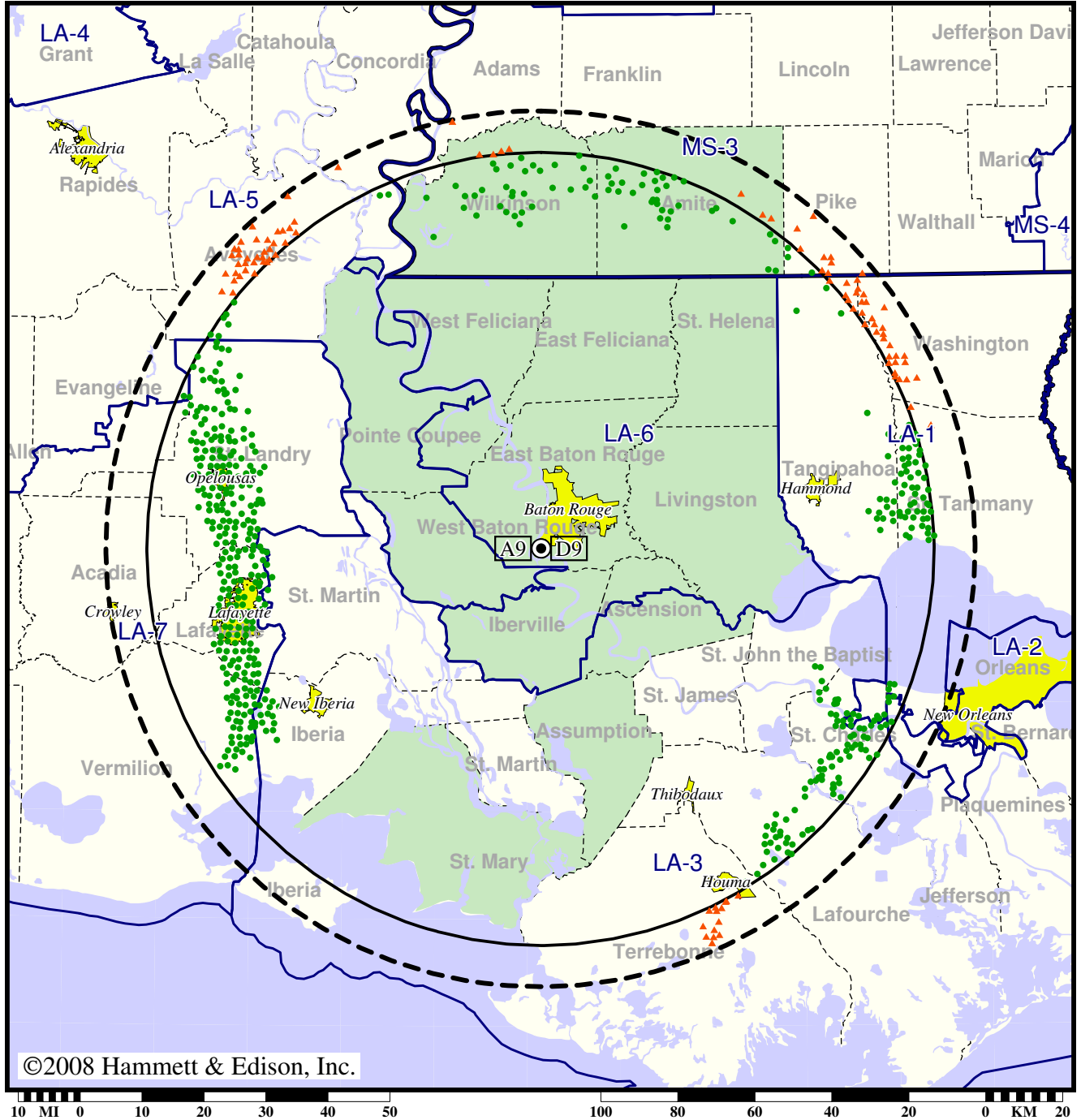


TV Station WAFB • Analog Channel 9, DTV Channel 9 • Baton Rouge, LA

Expected Change In Coverage: Granted Construction Permit

CP (solid): 5.57 kW ERP at 511 m HAAT  
 vs. Analog (dashed): 316 kW ERP at 509 m HAAT

Market: Baton Rouge, LA



©2008 Hammett & Edison, Inc.

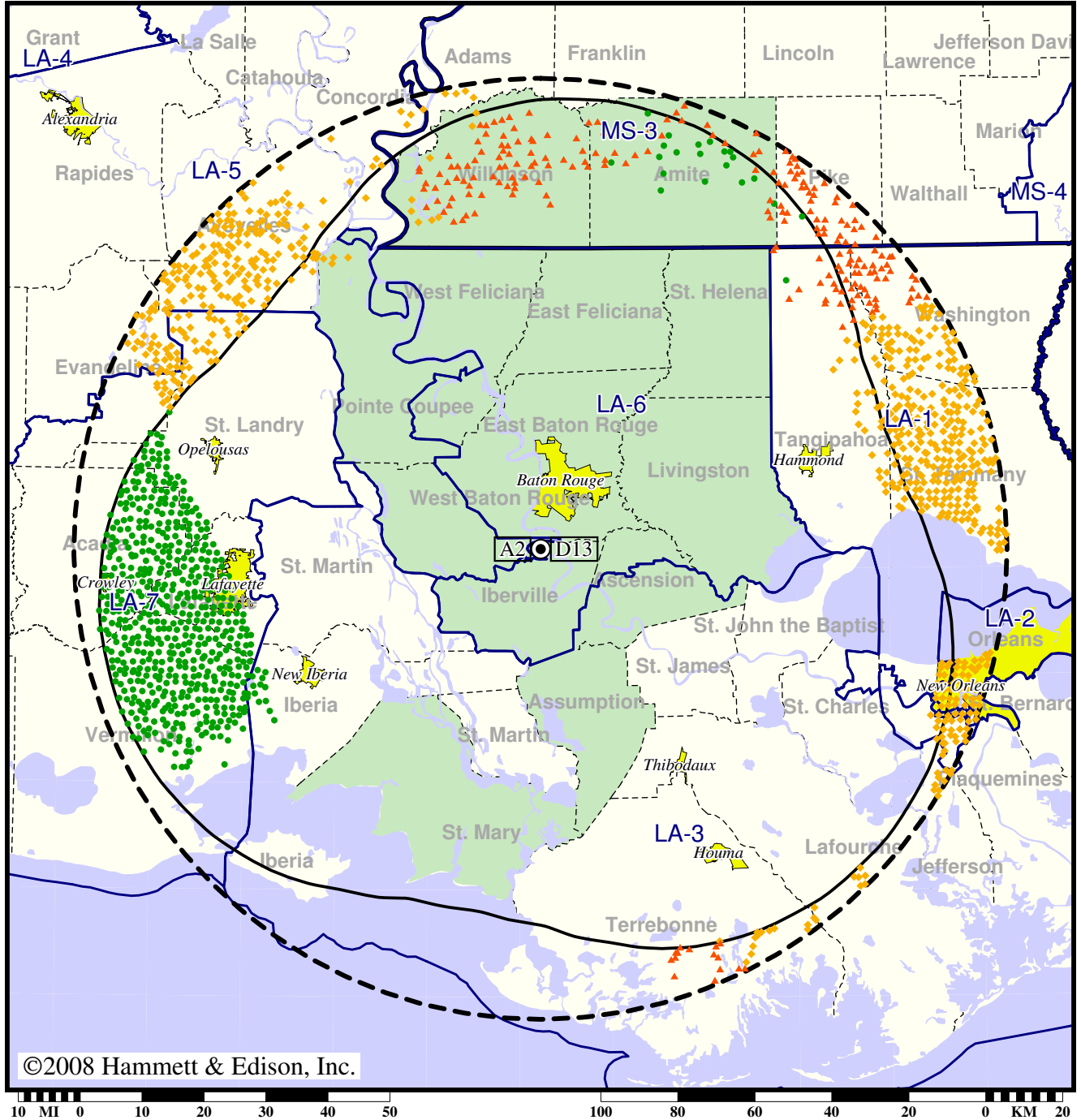
- Coverage gained after DTV transition
- (no symbol) No change in coverage
- ▲ Coverage lost after DTV transition

Station WBRZ-TV • Analog Channel 2, DTV Channel 13 • Baton Rouge, LA

Expected Change In Coverage: Post-Transition Appendix B Facility

Appendix B (solid): 30.0 kW ERP at 515 m HAAT, Network: ABC  
 vs. Analog (dashed): 100 kW ERP at 515 m HAAT, Network: ABC

Market: Baton Rouge, LA



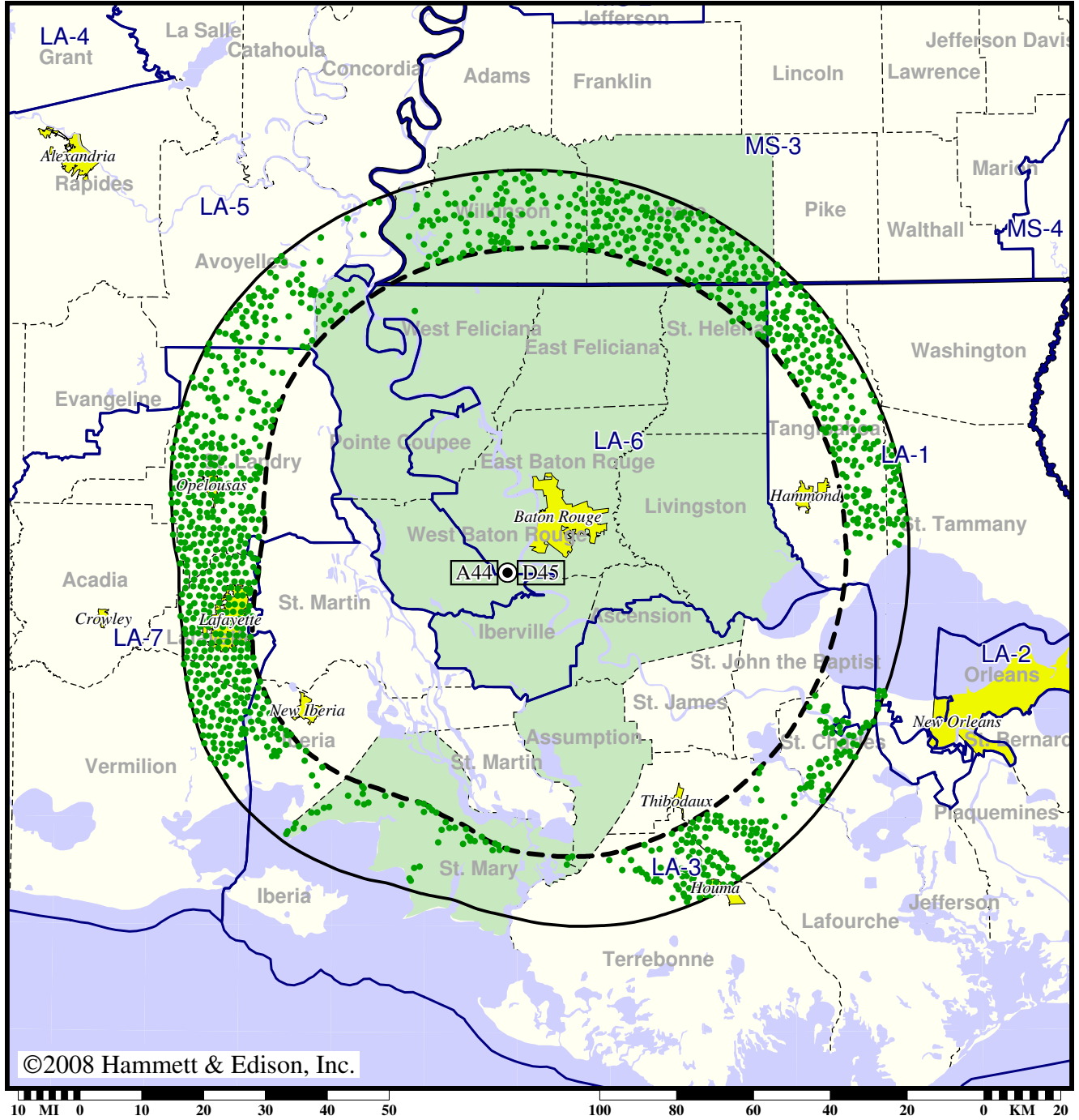
- Coverage gained after DTV transition
- (no symbol) No change in coverage
- ◆ Coverage lost but still served by same network
- ▲ Coverage lost and no other service by same network

TV Station WGMB • Analog Channel 44, DTV Channel 45 • Baton Rouge, LA

Expected Change In Coverage: Licensed Operation

Licensed (solid): 1000 kW ERP at 424 m HAAT, Network: Fox  
vs. Analog (dashed): 3890 kW ERP at 426 m HAAT, Network: Fox

Market: Baton Rouge, LA



©2008 Hammett & Edison, Inc.

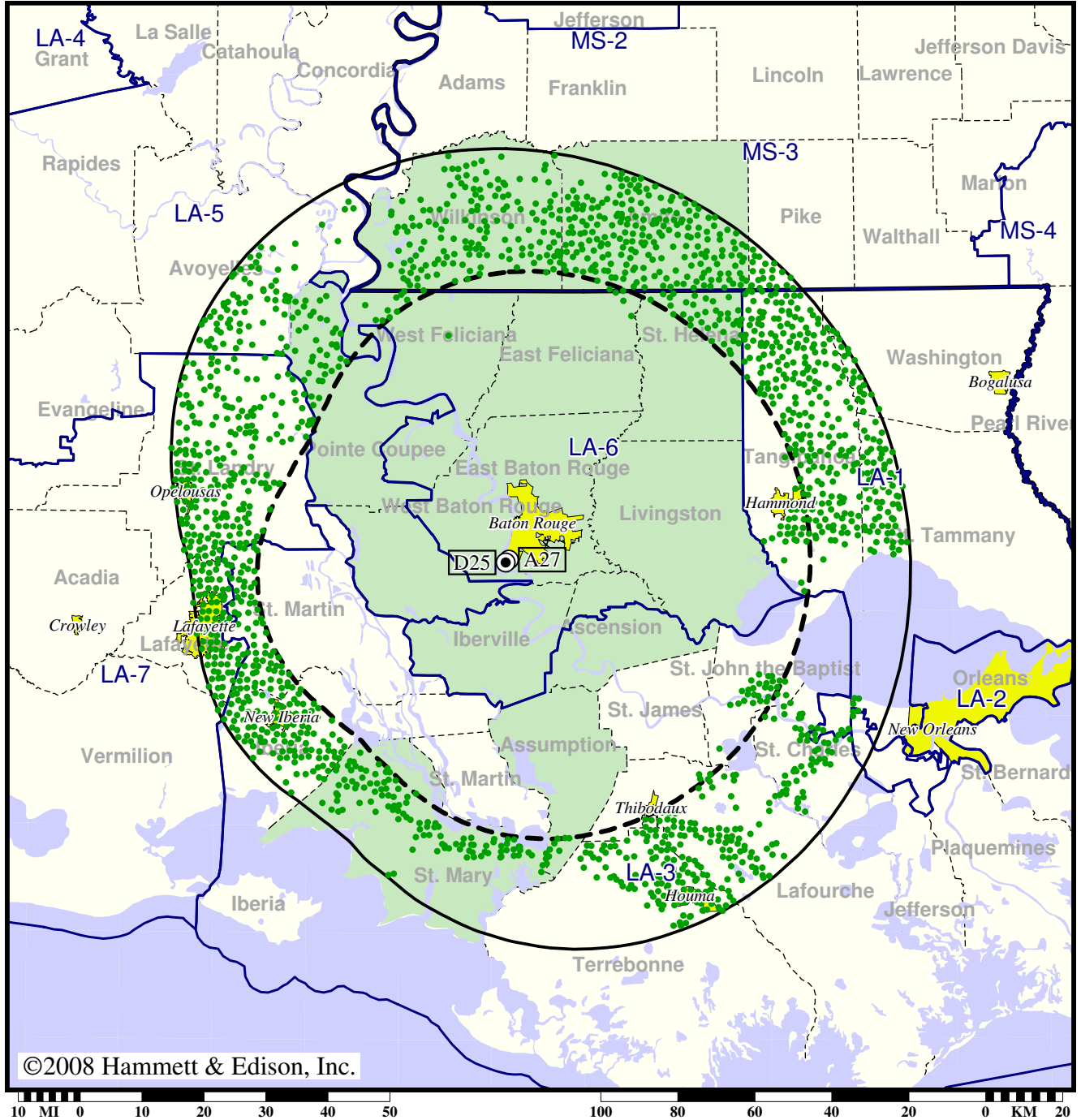
- Coverage gained after DTV transition
- (no symbol) No change in coverage

Station WLPB-TV • Analog Channel 27, DTV Channel 25 • Baton Rouge, LA

Expected Change In Coverage: Granted Construction Permit

CP (solid): 404 kW ERP at 489 m HAAT, Network: PBS  
vs. Analog (dashed): 2570 kW ERP at 303 m HAAT, Network: PBS

Market: Baton Rouge, LA



- Coverage gained after DTV transition
- (no symbol) No change in coverage

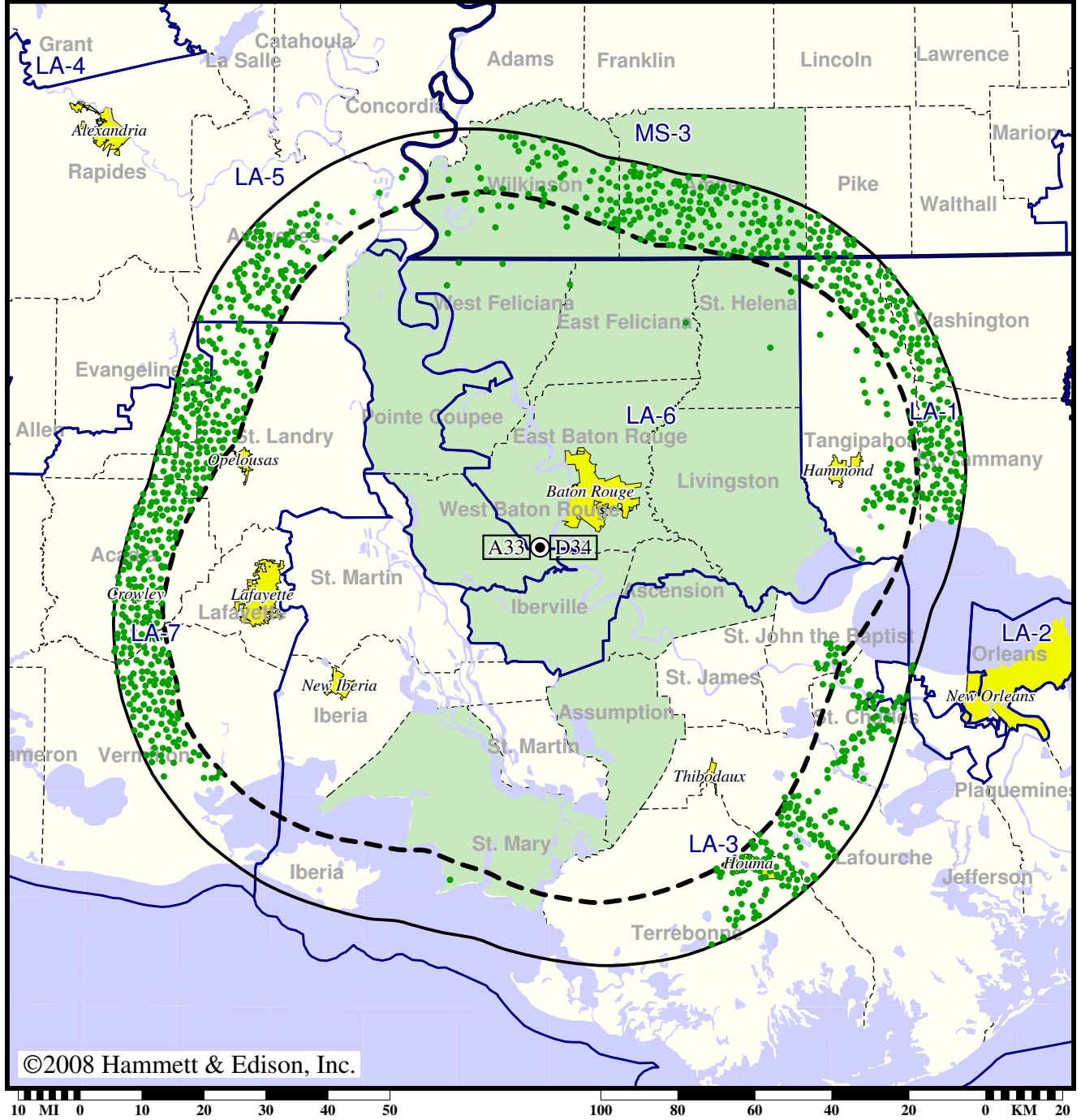


TV Station WVLA • Analog Channel 33, DTV Channel 34 • Baton Rouge, LA

Expected Change In Coverage: Licensed Operation

Licensed (solid): 1000 kW ERP at 522 m HAAT, Network: NBC  
vs. Analog (dashed): 5000 kW ERP at 522 m HAAT, Network: NBC

Market: Baton Rouge, LA



- Coverage gained after DTV transition
- (no symbol) No change in coverage