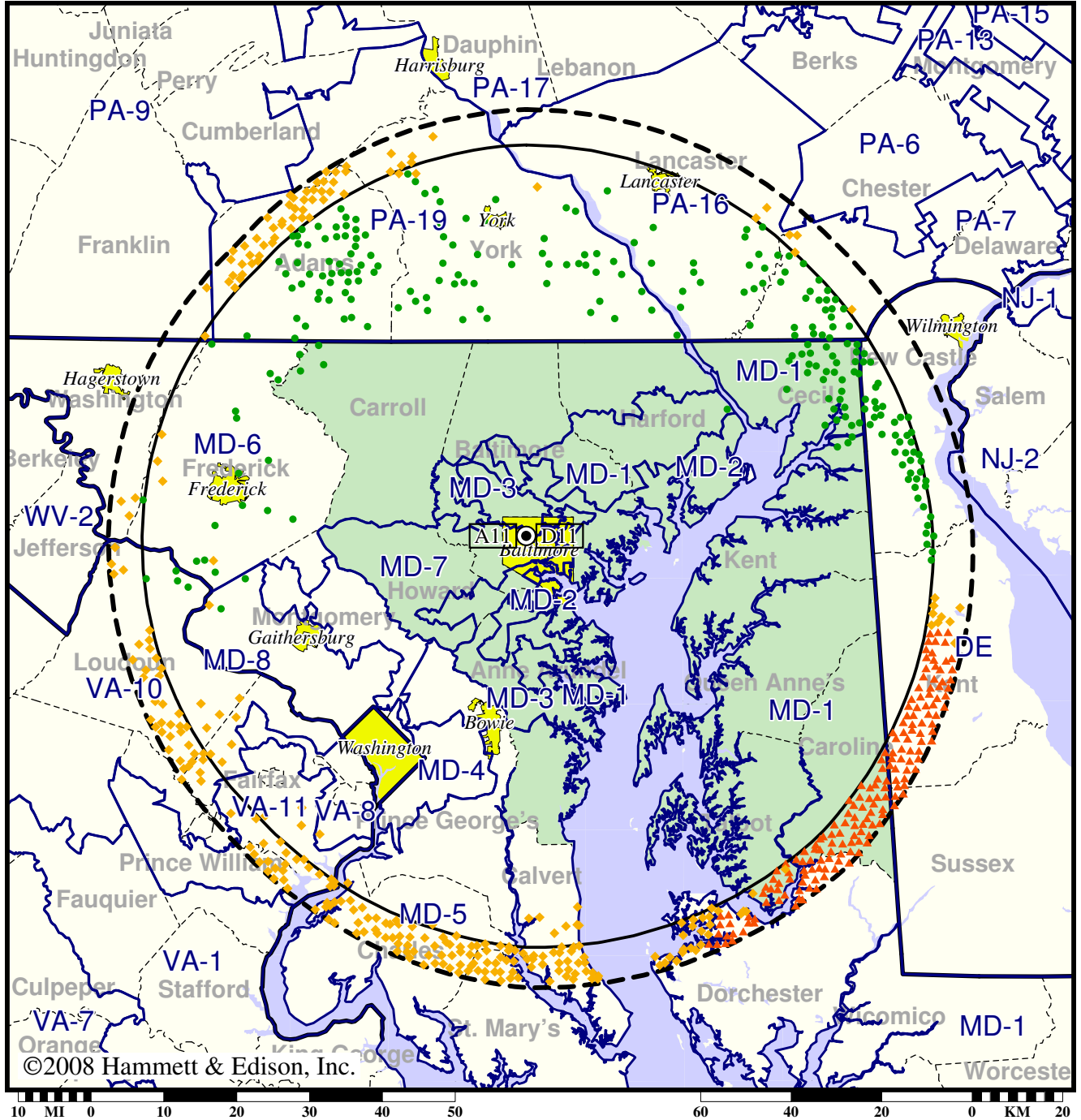


Station WBAL-TV • Analog Channel 11, DTV Channel 11 • Baltimore, MD

Expected Change In Coverage: Granted Construction Permit

CP (solid): 5.00 kW ERP at 299 m HAAT, Network: NBC
 vs. Analog (dashed): 316 kW ERP at 299 m HAAT, Network: NBC

Market: Baltimore, MD



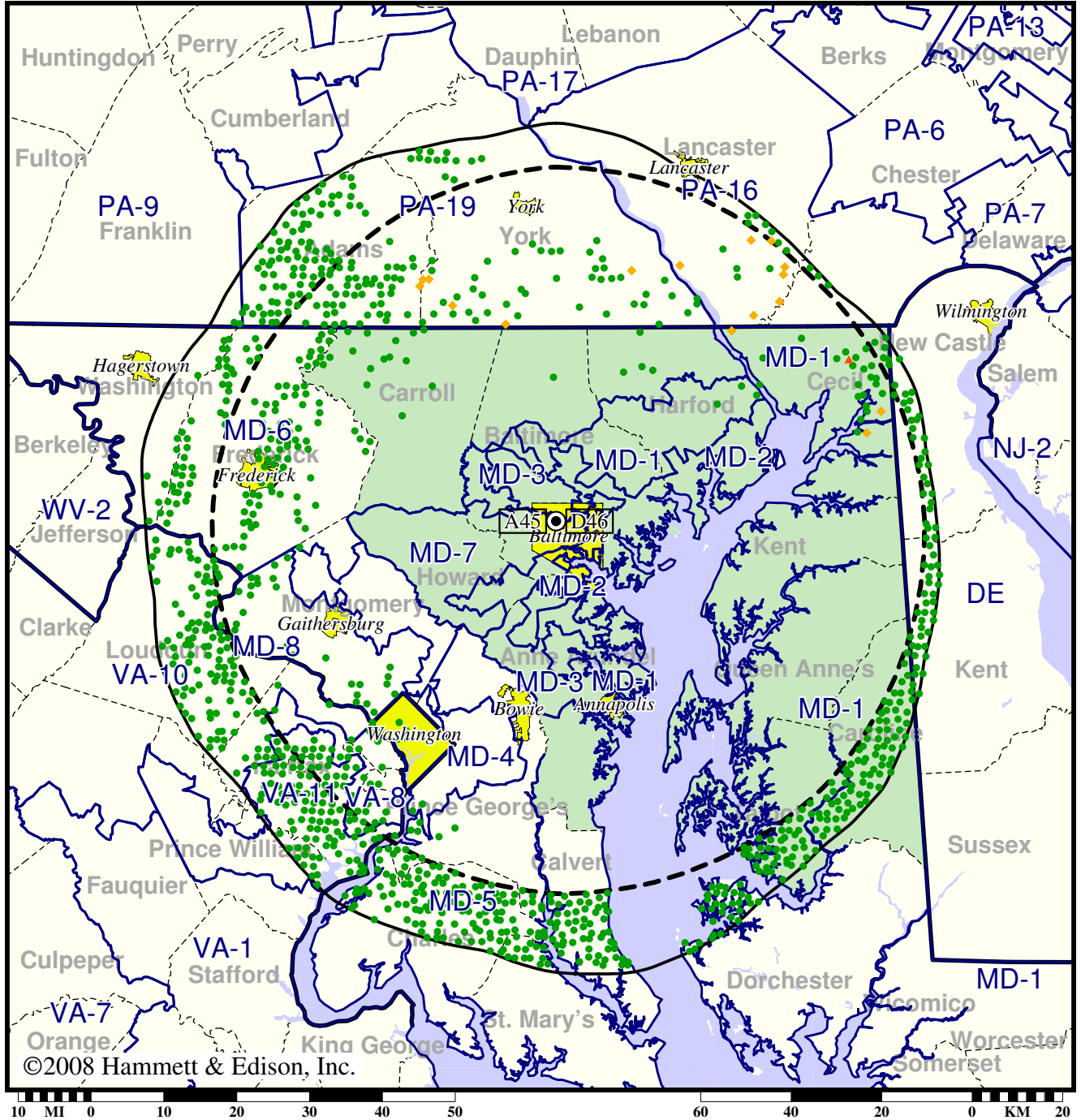
- Coverage gained after DTV transition
- (no symbol) No change in coverage
- ◆ Coverage lost but still served by same network
- ▲ Coverage lost and no other service by same network

TV Station WBFF • Analog Channel 45, DTV Channel 46 • Baltimore, MD

Expected Change In Coverage: Post-Transition Appendix B Facility

Appendix B (solid): 550 kW ERP at 373 m HAAT, Network: Fox
vs. Analog (dashed): 1290 kW ERP at 386 m HAAT, Network: Fox

Market: Baltimore, MD



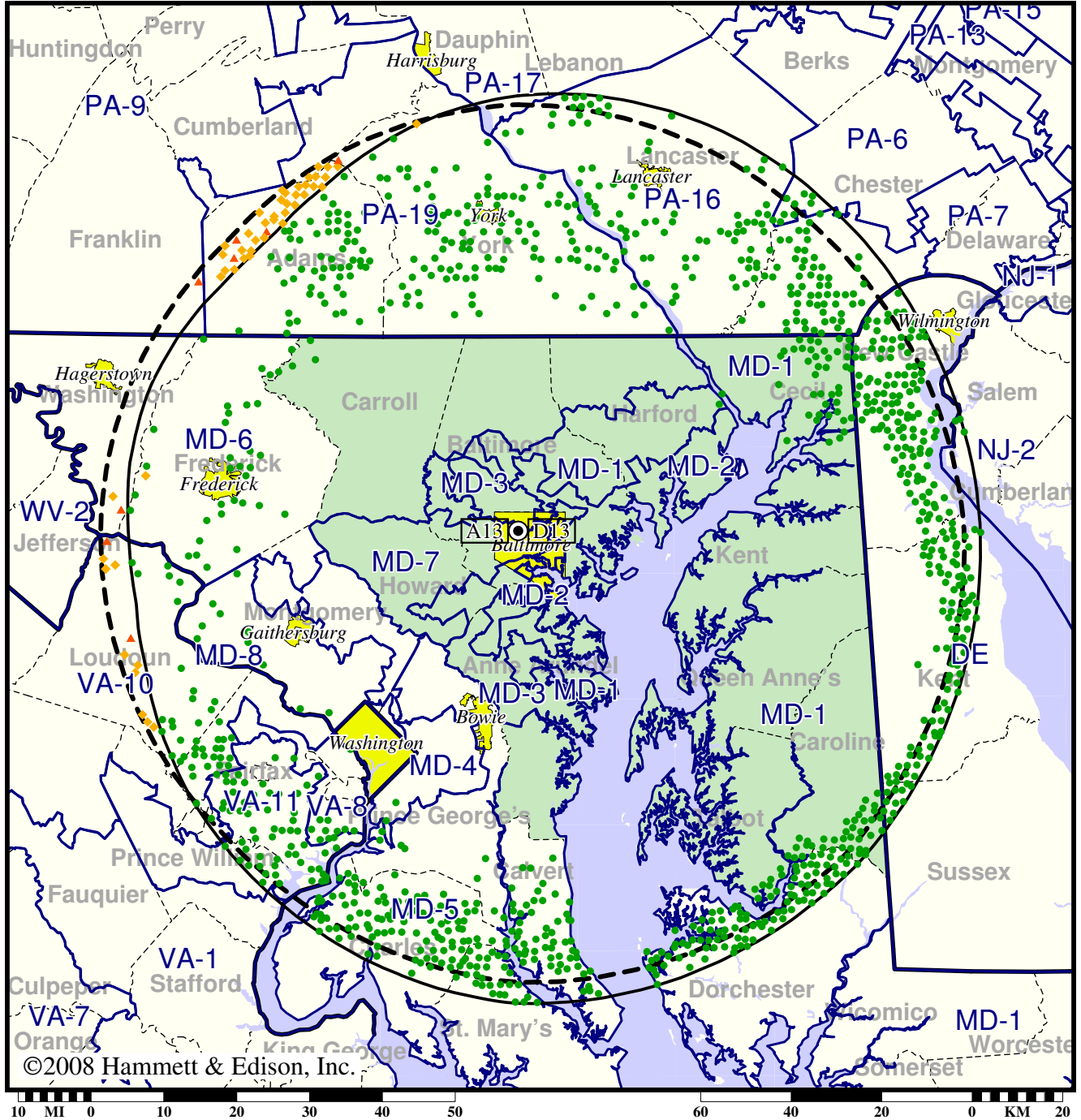
- Coverage gained after DTV transition
- (no symbol) No change in coverage
- ◆ Coverage lost but still served by same network
- ▲ Coverage lost and no other service by same network

Station WJZ-TV • Analog Channel 13, DTV Channel 13 • Baltimore, MD

Expected Change In Coverage: Granted Construction Permit

CP (solid): 28.8 kW ERP at 295 m HAAT, Network: CBS
vs. Analog (dashed): 316 kW ERP at 292 m HAAT, Network: CBS

Market: Baltimore, MD



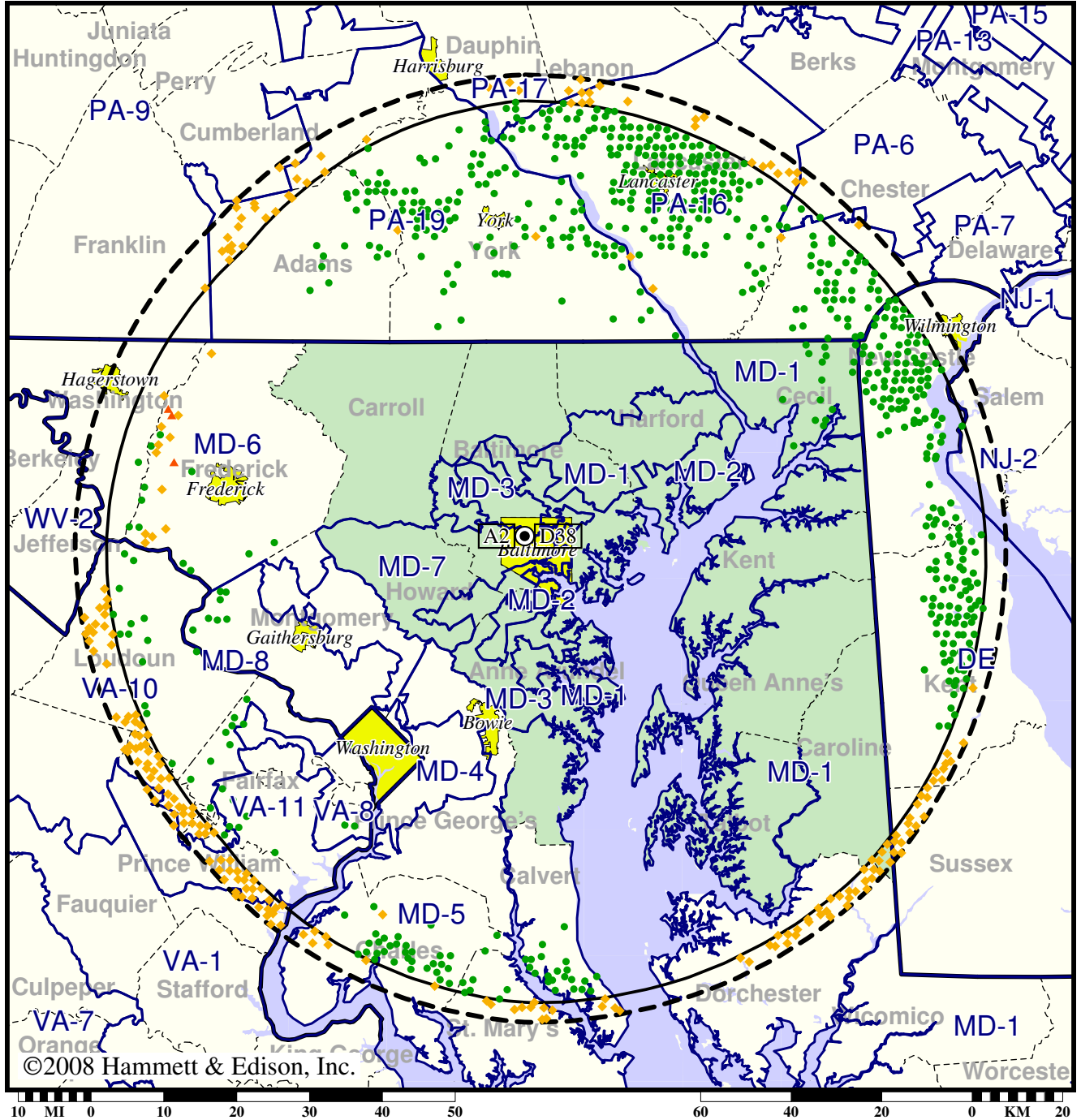
- Coverage gained after DTV transition
- (no symbol) No change in coverage
- ◆ Coverage lost but still served by same network
- ▲ Coverage lost and no other service by same network

Station WMAR-TV • Analog Channel 2, DTV Channel 38 • Baltimore, MD

Expected Change In Coverage: Granted Construction Permit

CP (solid): 1000 kW ERP at 312 m HAAT, Network: ABC
 vs. Analog (dashed): 100 kW ERP at 297 m HAAT, Network: ABC

Market: Baltimore, MD



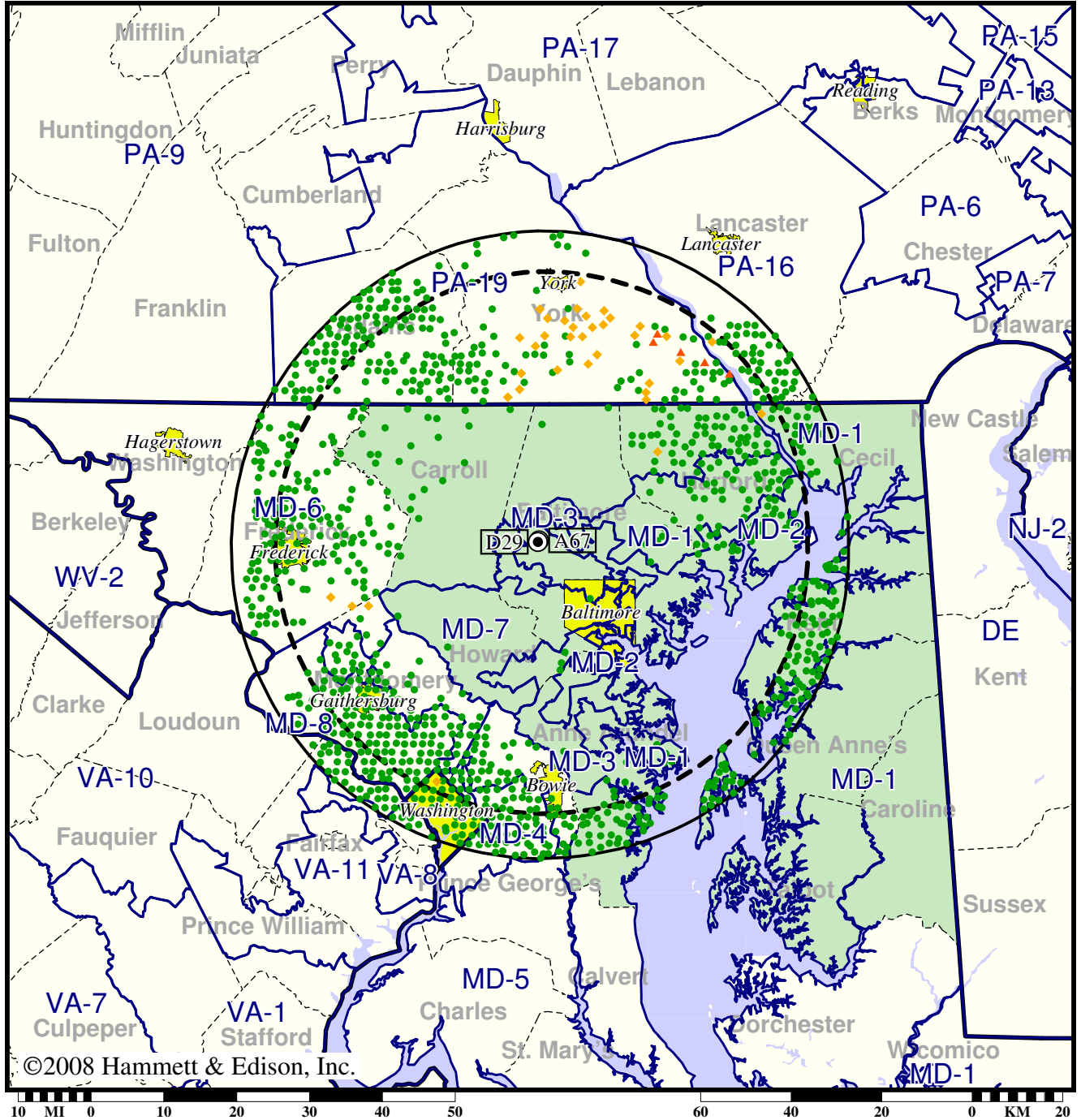
- Coverage gained after DTV transition
- (no symbol) No change in coverage
- ◆ Coverage lost but still served by same network
- ▲ Coverage lost and no other service by same network

TV Station WMPB • Analog Channel 67, DTV Channel 29 • Baltimore, MD

Expected Change In Coverage: Licensed Operation

Licensed (solid): 14.0 kW ERP at 309 m HAAT, Network: PBS
 vs. Analog (dashed): 646 kW ERP at 250 m HAAT, Network: PBS

Market: Baltimore, MD



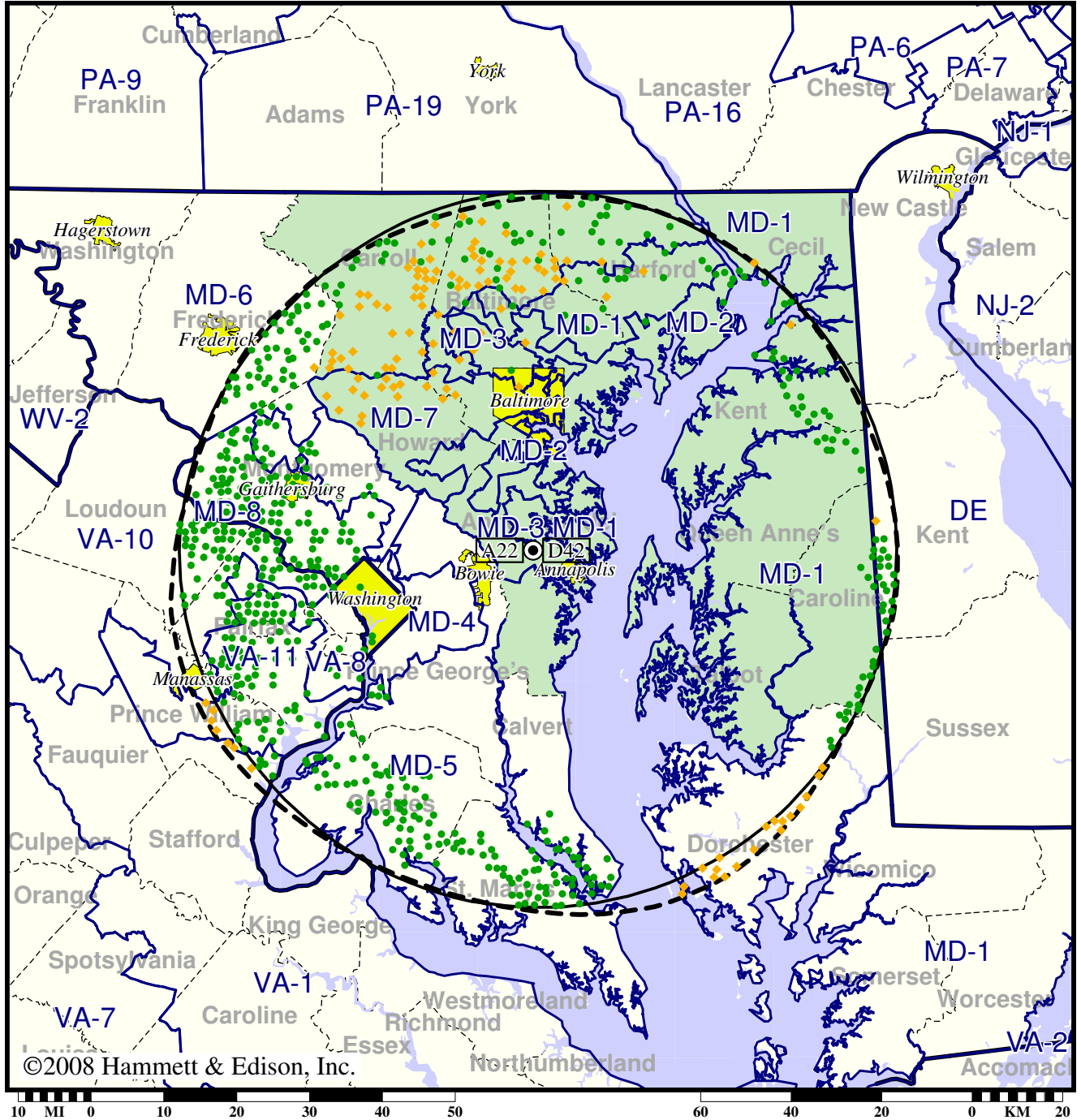
- Coverage gained after DTV transition
- (no symbol) No change in coverage
- ◆ Coverage lost but still served by same network
- ▲ Coverage lost and no other service by same network

TV Station WMPT • Analog Channel 22, DTV Channel 42 • Annapolis, MD

Expected Change In Coverage: Licensed Operation

Licensed (solid): 150 kW ERP at 289 m HAAT, Network: PBS
vs. Analog (dashed): 5000 kW ERP at 273 m HAAT, Network: PBS

Market: Baltimore, MD



©2008 Hammett & Edison, Inc.

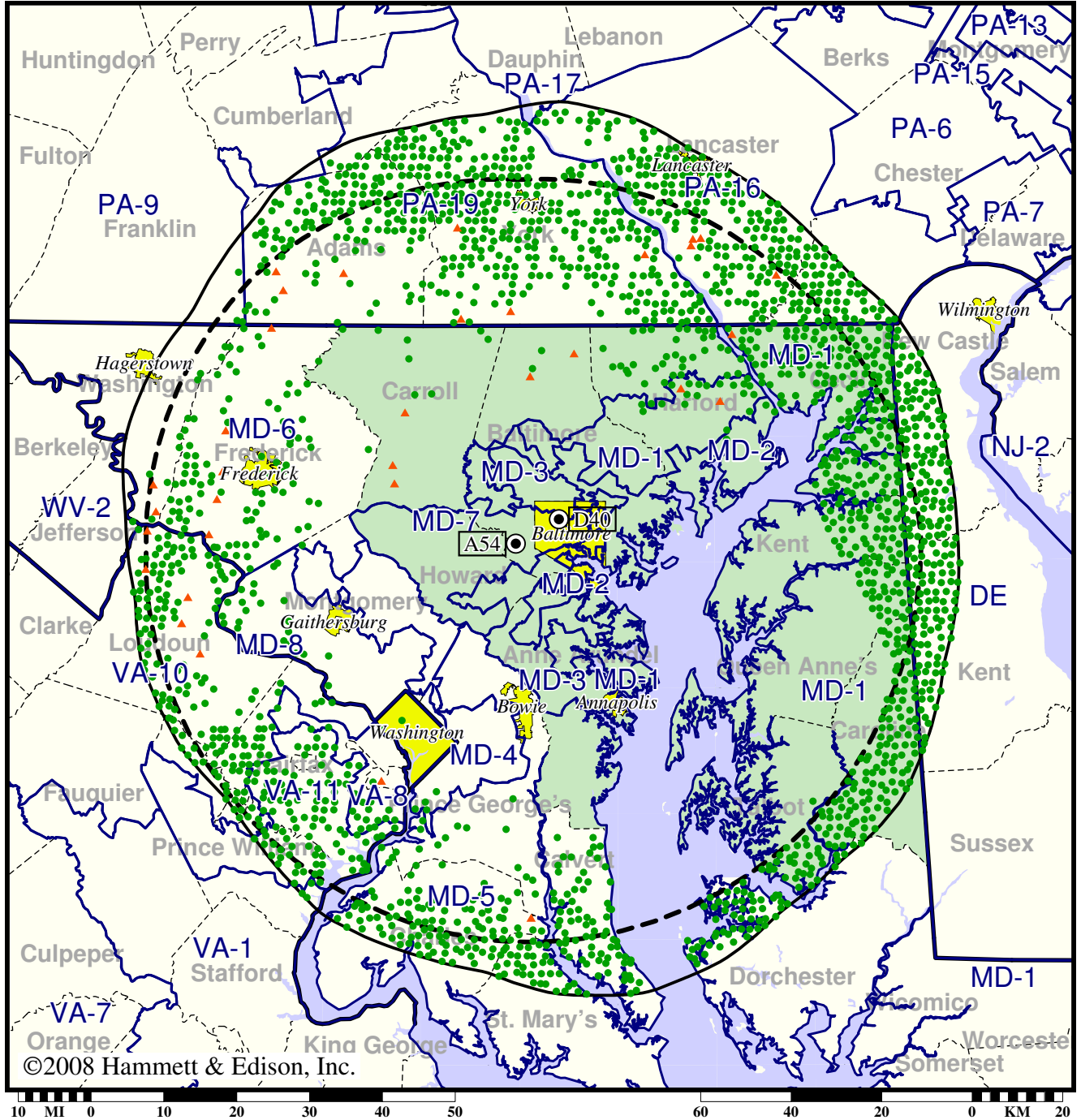
- Coverage gained after DTV transition
- (no symbol) No change in coverage
- ◆ Coverage lost but still served by same network

TV Station WNUV • Analog Channel 54, DTV Channel 40 • Baltimore, MD

Expected Change In Coverage: Licensed Operation

Licensed (solid): 845 kW ERP at 373 m HAAT
vs. Analog (dashed): 5000 kW ERP at 349 m HAAT

Market: Baltimore, MD



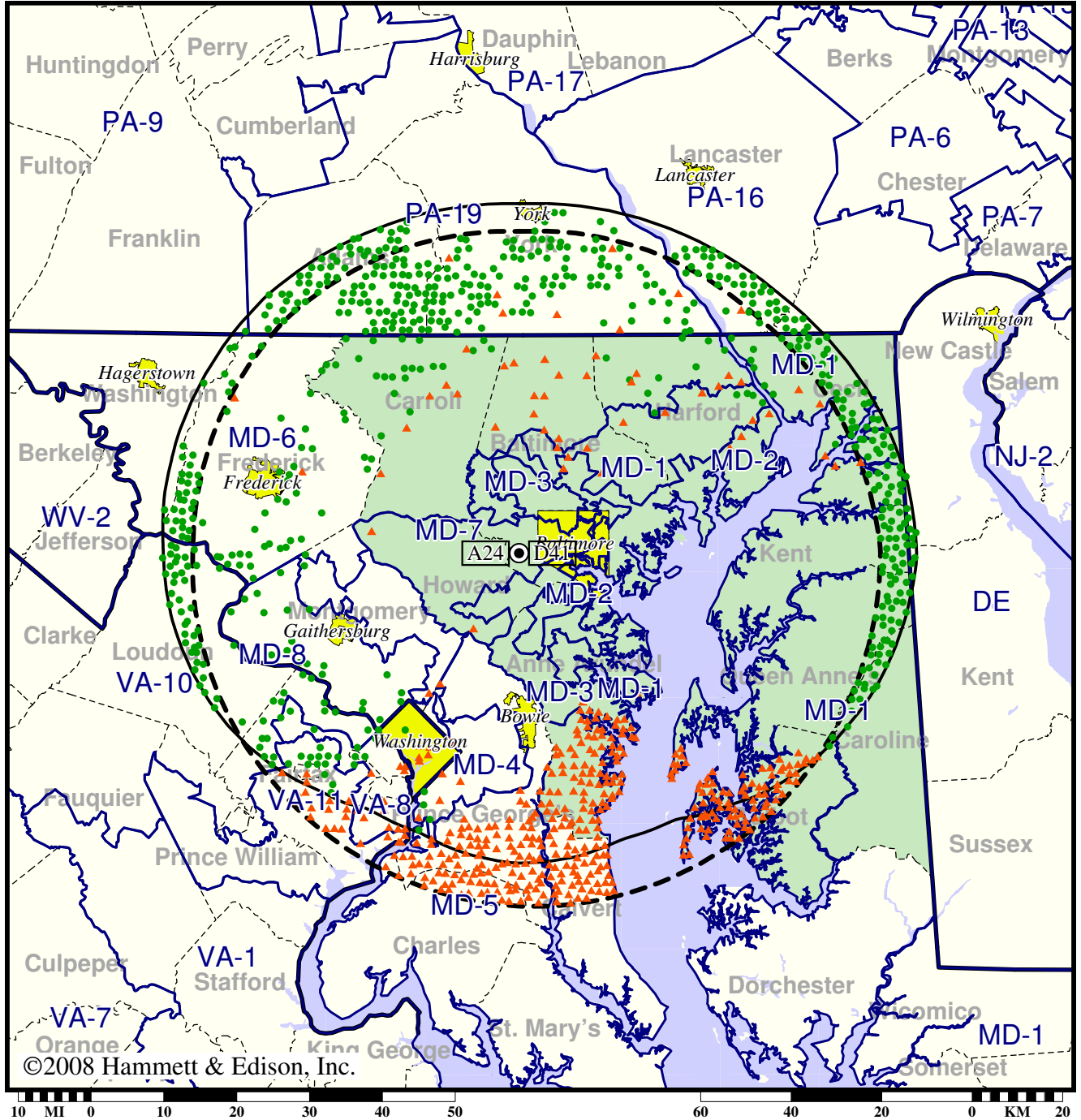
- Coverage gained after DTV transition
- (no symbol) No change in coverage
- ▲ Coverage lost after DTV transition

TV Station WUTB • Analog Channel 24, DTV Channel 41 • Baltimore, MD

Expected Change In Coverage: Granted Construction Permit

CP (solid): 200 kW ERP at 308 m HAAT
vs. Analog (dashed): 1170 kW ERP at 326 m HAAT

Market: Baltimore, MD



- Coverage gained after DTV transition
- (no symbol) No change in coverage
- ▲ Coverage lost after DTV transition