

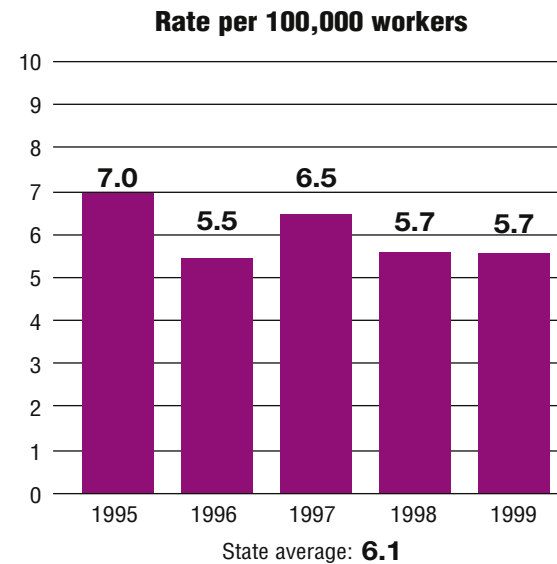
Total fatalities, 1995–99: **803**

Average fatalities per year: **161**

Five-year average fatality rate: **6.1**

Tennessee

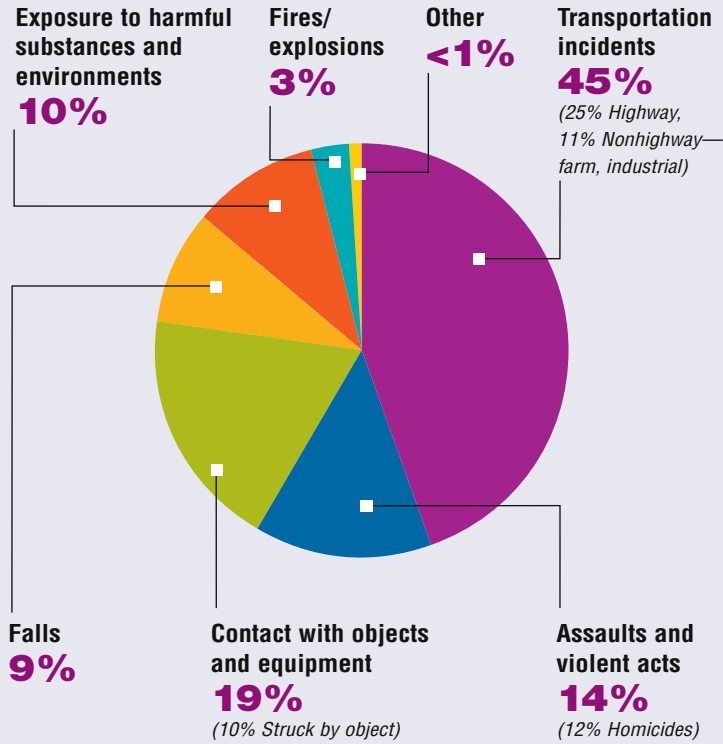
WORK-RELATED FATALITY NUMBERS AND RATES*



EMPLOYEE STATUS		GENDER		AGE		RACE	
Wage/Salary worker	584	Male	755	Under 20	31	White	689
Self-employed	219	Female	48	20 to 34	208	Black/African American	80
				35 to 54	357	Hispanic/Latino	20
				55 and older	206	Other races/Not reported	14

*Please see caveats regarding the calculation of State rates in the State Profiles section introduction page and appendix II.

WORK-RELATED FATALITIES BY EVENT



OCCUPATIONS WITH THE MOST FATALITIES

OCCUPATION	NUMBER (%)
Transportation and material moving occupations	179 (22%)
Handlers, equipment cleaners, helpers, and laborers	106 (13%)
Construction trades	83 (10%)
Farming operators and managers	82 (10%)
Executive, administrative, and managerial	48 (6%)

WORK-RELATED FATALITIES BY MAJOR INDUSTRY

