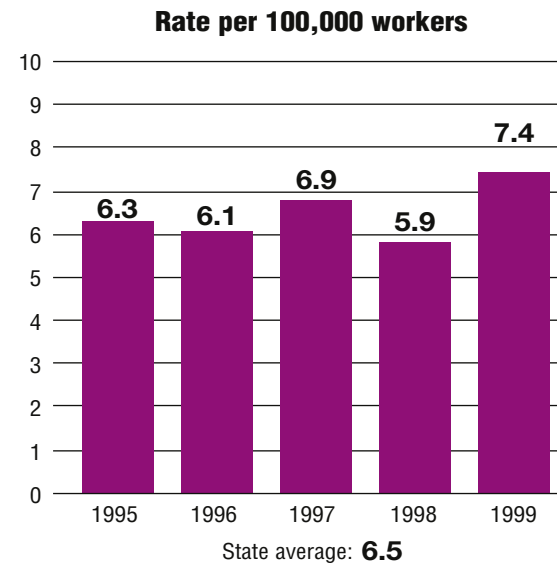


Total fatalities, 1995–99:	605
Average fatalities per year:	121
Five-year average fatality rate:	6.5



South Carolina

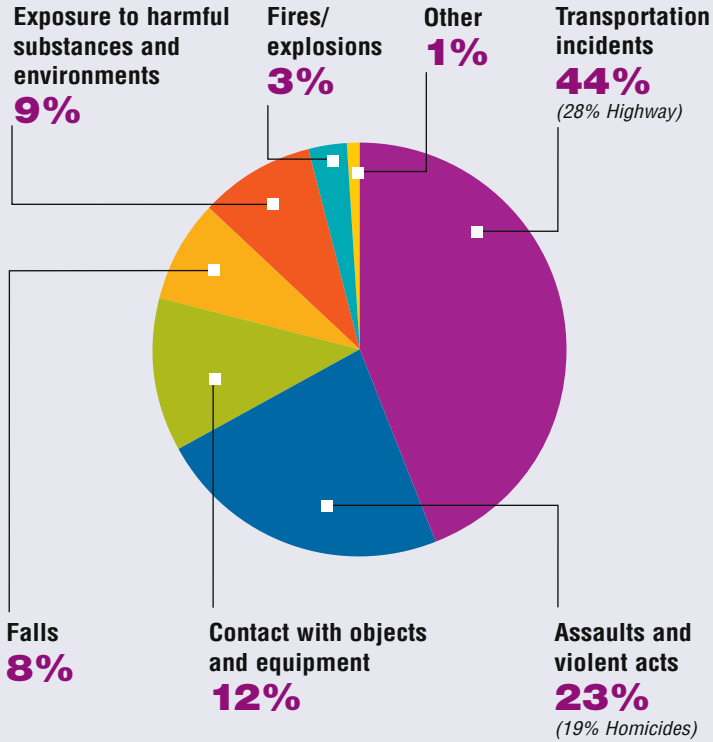
WORK-RELATED FATALITY NUMBERS AND RATES*



EMPLOYEE STATUS		GENDER		AGE		RACE	
Wage/Salary worker	475	Male	534	Under 20	16	White	418
Self-employed	130	Female	71	20 to 34	190	Black/African American	155
				35 to 54	265	Hispanic/Latino	20
				55 and older	133	Other races/Not reported	12

*Please see caveats regarding the calculation of State rates in the State Profiles section introduction page and appendix II.

WORK-RELATED FATALITIES BY EVENT

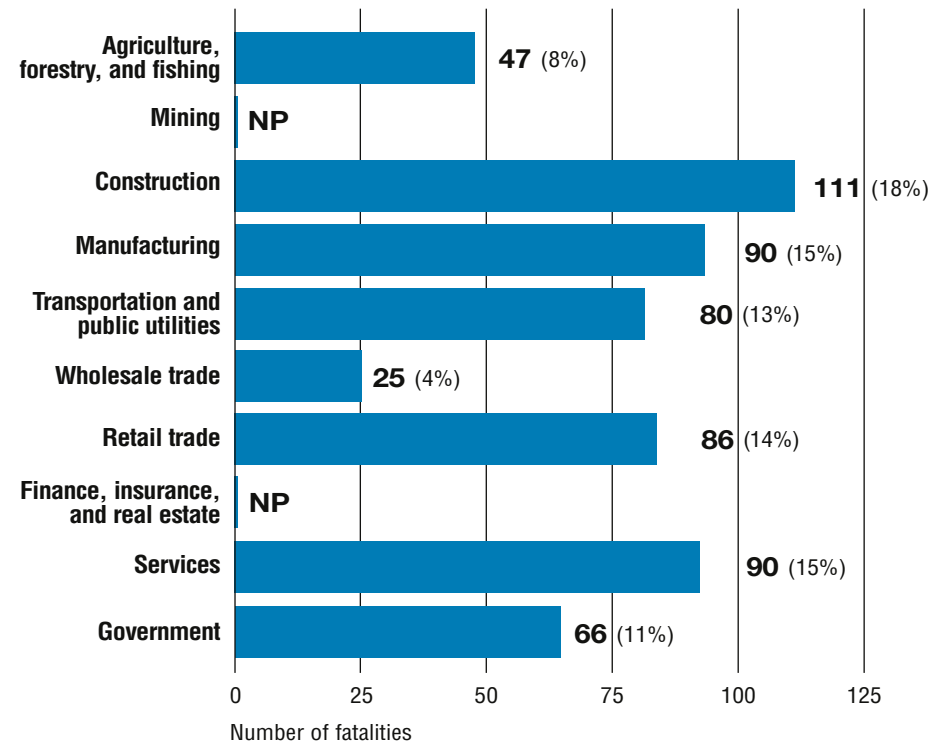


OCCUPATIONS WITH THE MOST FATALITIES

OCCUPATION	NUMBER (%)
Transportation and material moving occupations	124 (20%)
Sales occupations	70 (12%)
Handlers, equipment cleaners, helpers, and laborers	66 (11%)
Construction trades	58 (10%)
Protective service occupations	35 (6%)



WORK-RELATED FATALITIES BY MAJOR INDUSTRY



NP indicates no data reported or data that do not meet publication criteria.