

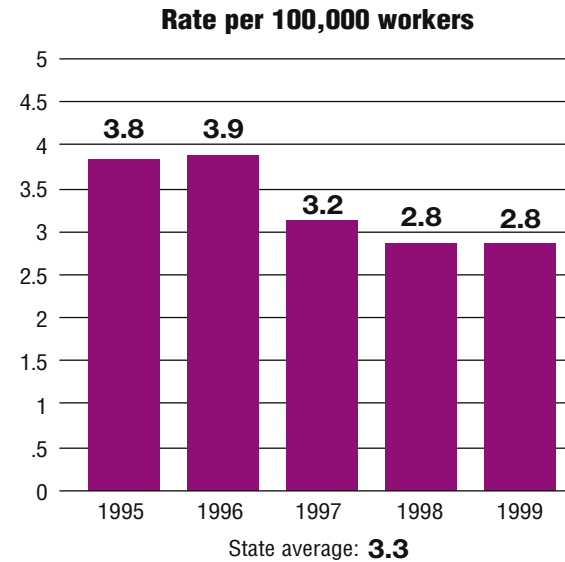
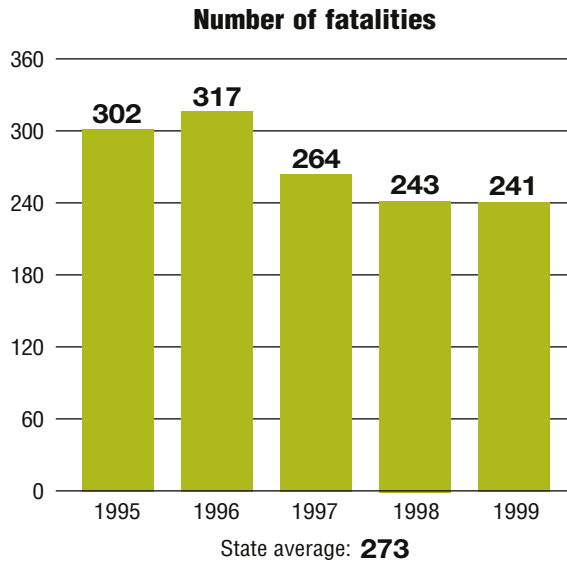
Total fatalities, 1995–99: **1,367**

Average fatalities per year: **273**

Five-year average fatality rate: **3.3**

New York *(including New York City)*

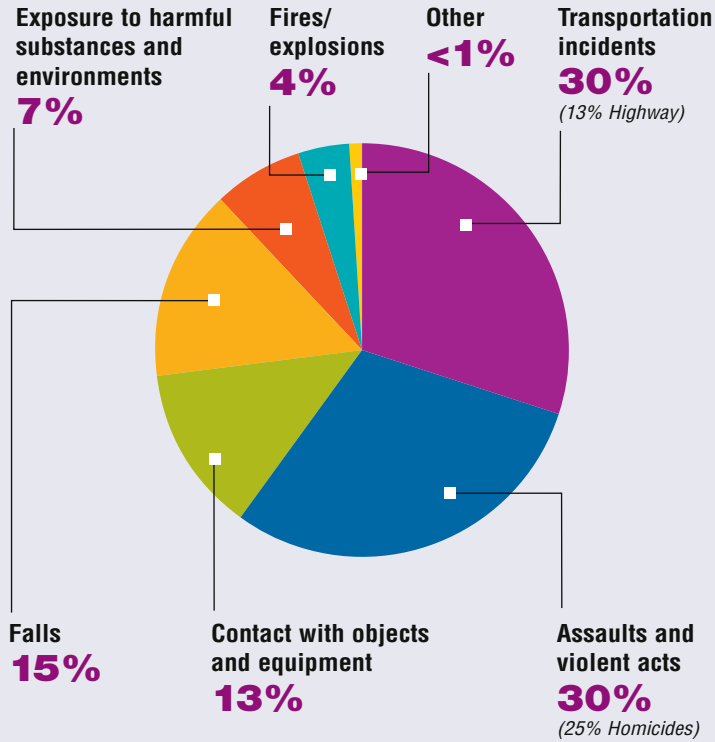
WORK-RELATED FATALITY NUMBERS AND RATES*



EMPLOYEE STATUS		GENDER		AGE		RACE	
Wage/Salary worker	1,102	Male	1,262	Under 20	39	White	845
Self-employed	265	Female	105	20 to 34	363	Black/African American	188
				35 to 54	654	Hispanic/Latino	219
				55 and older	284	Other races/Not reported	115

*Please see caveats regarding the calculation of State rates in the State Profiles section introduction page and appendix II.

WORK-RELATED FATALITIES BY EVENT

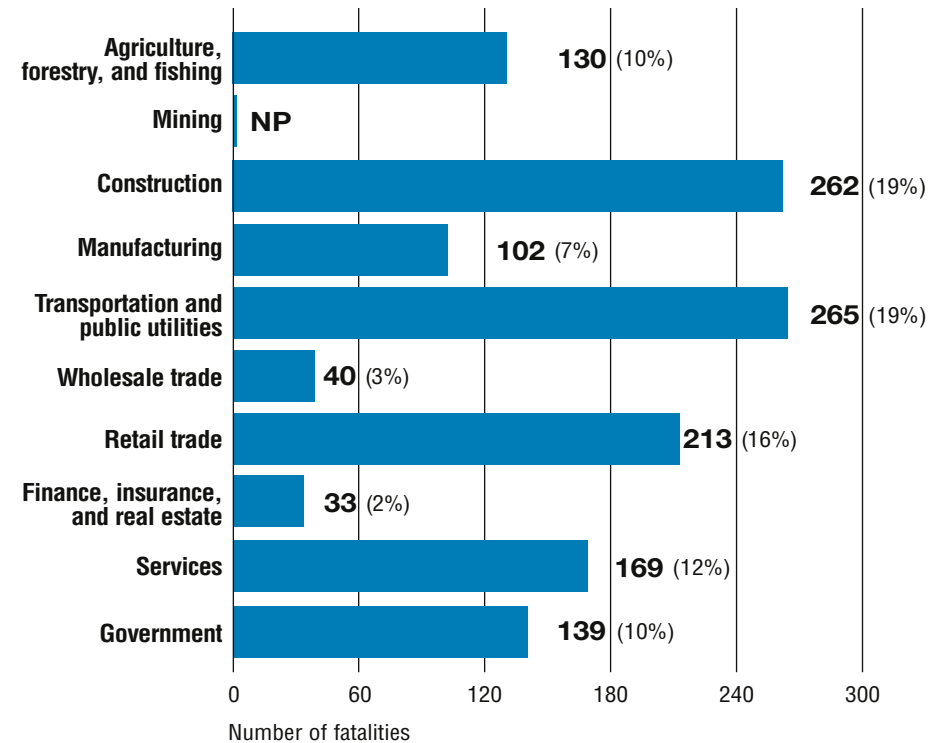


OCCUPATIONS WITH THE MOST FATALITIES

OCCUPATION	NUMBER (%)
Transportation and material moving occupations	247 (18%)
Handlers, equipment cleaners, helpers, and laborers	219 (16%)
Sales occupations	145 (11%)
Construction trades	106 (8%)
Service occupations, except protective and household	90 (7%)



WORK-RELATED FATALITIES BY MAJOR INDUSTRY



NP indicates no data reported or data that do not meet publication criteria.