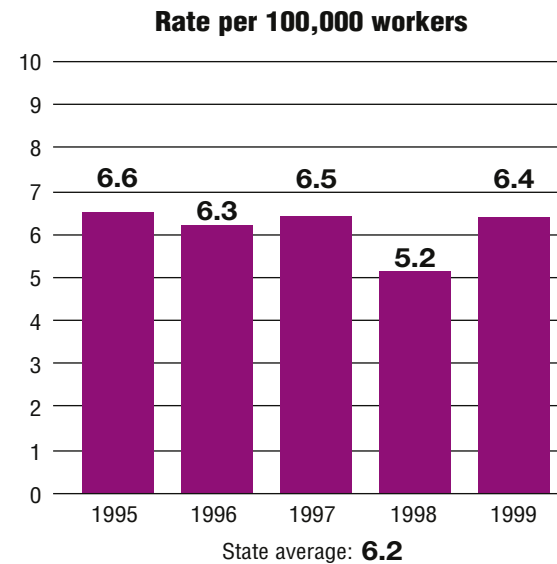


Total fatalities, 1995–99:	<b>276</b>
Average fatalities per year:	<b>55</b>
Five-year average fatality rate:	<b>6.2</b>

# Nevada

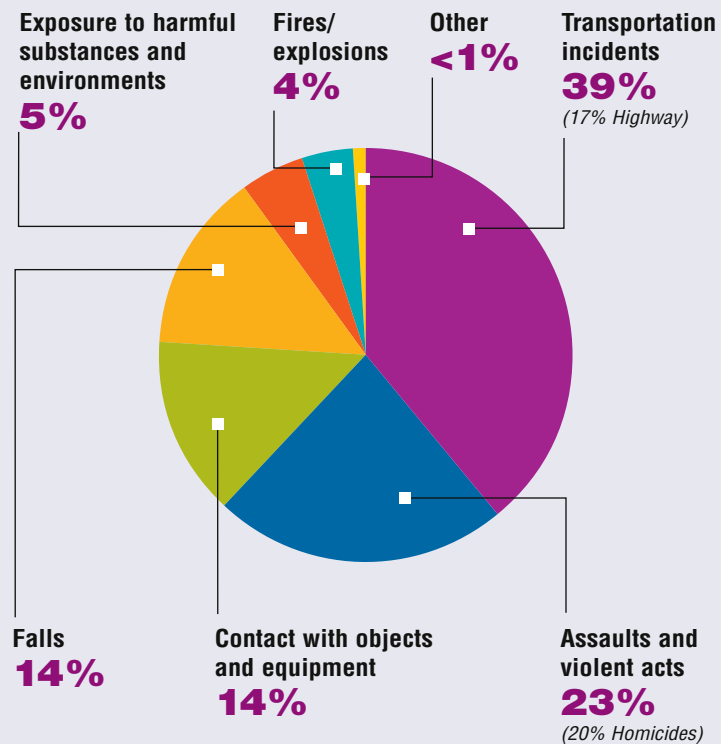
## WORK-RELATED FATALITY NUMBERS AND RATES\*



EMPLOYEE STATUS		GENDER		AGE		RACE	
Wage/Salary worker	<b>248</b>	Male	<b>258</b>	Under 20	—	White	<b>217</b>
Self-employed	<b>28</b>	Female	<b>18</b>	20 to 34	<b>96</b>	Black/African American	<b>15</b>
				35 to 54	<b>126</b>	Hispanic/Latino	<b>36</b>
				55 and older	<b>50</b>	Other races/Not reported	<b>8</b>

\*Please see caveats regarding the calculation of State rates in the State Profiles section introduction page and appendix II.

## WORK-RELATED FATALITIES BY EVENT

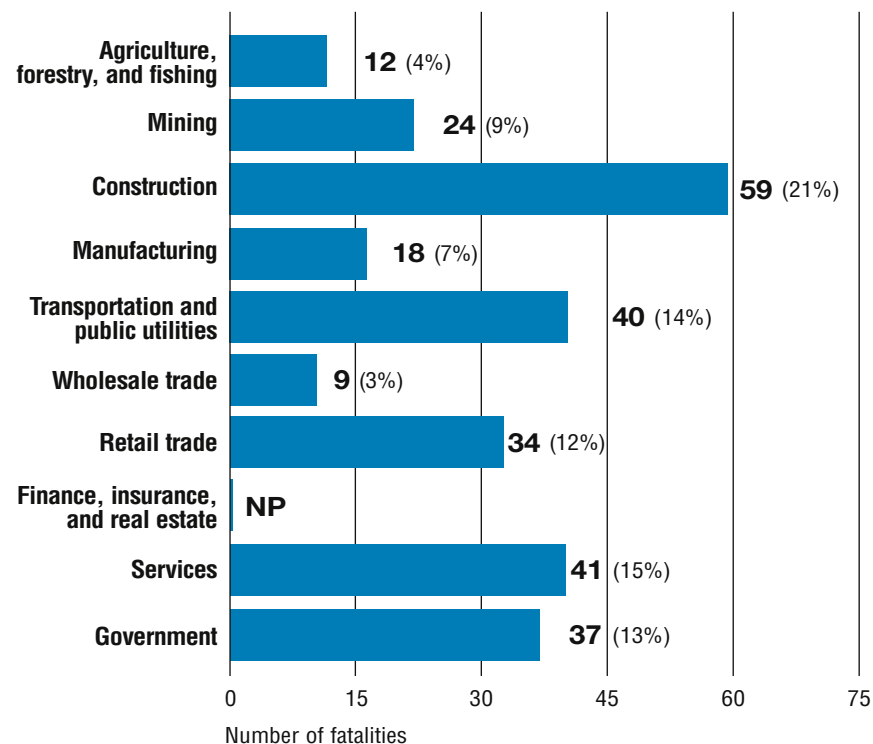


## OCCUPATIONS WITH THE MOST FATALITIES

OCCUPATION	NUMBER (%)
Transportation and material moving occupations	56 (20%)
Construction trades	43 (16%)
Mechanics and repairers	19 (7%)
Handlers, equipment cleaners, helpers, and laborers	18 (7%)
Executive, administrative, and managerial	17 (6%)



## WORK-RELATED FATALITIES BY MAJOR INDUSTRY



NP indicates no data reported or data that do not meet publication criteria.