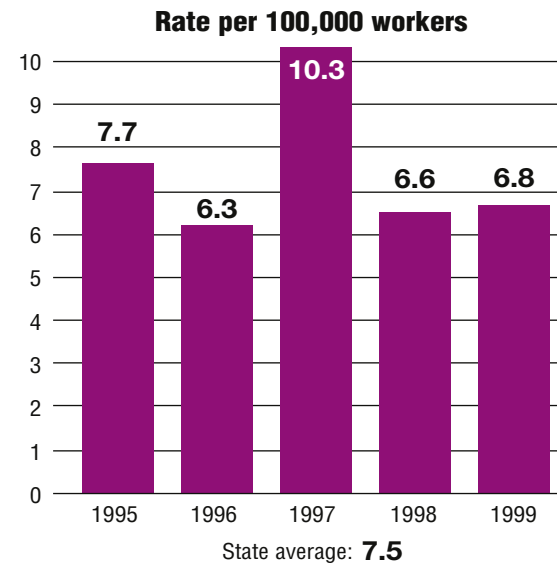
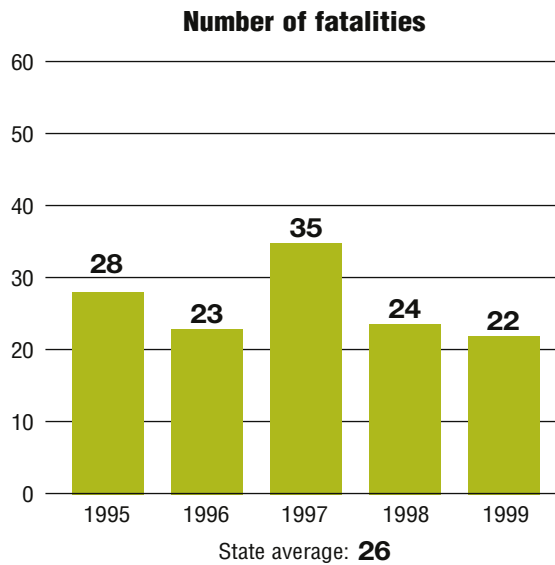


Total fatalities, 1995–99:	132
Average fatalities per year:	26
Five-year average fatality rate:	7.5



North Dakota

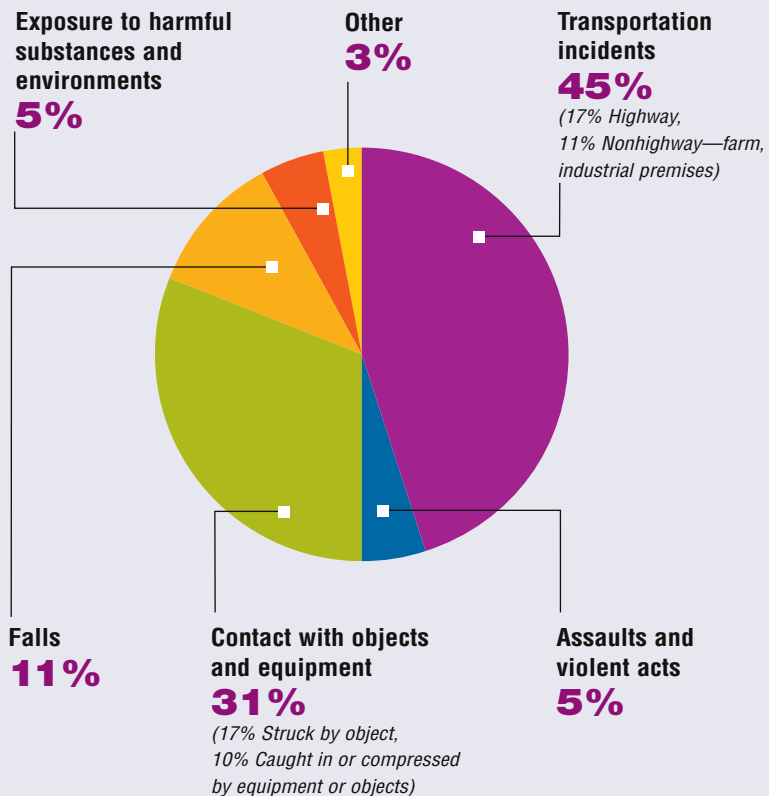
WORK-RELATED FATALITY NUMBERS AND RATES*



EMPLOYEE STATUS		GENDER		AGE		RACE	
Wage/Salary worker	59	Male	129	Under 20	7	White	127
Self-employed	73	Female	—	20 to 34	22	Black/African American	—
				35 to 54	53	Hispanic/Latino	—
				55 and older	50	Other races/Not reported	—

*Please see caveats regarding the calculation of State rates in the State Profiles section introduction page and appendix II.

WORK-RELATED FATALITIES BY EVENT

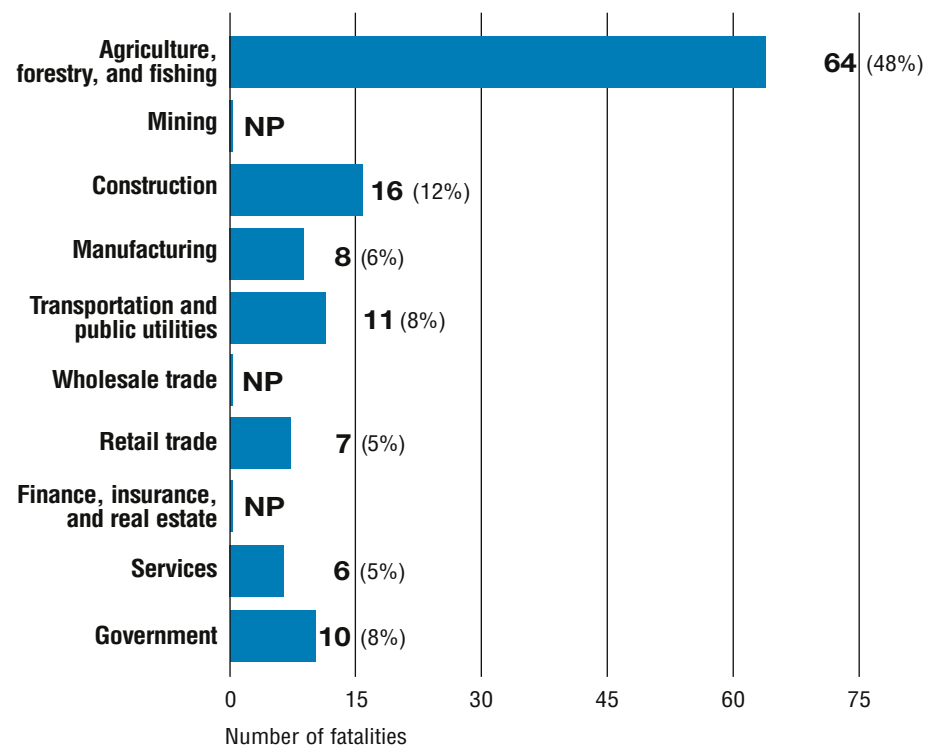


OCCUPATIONS WITH THE MOST FATALITIES

OCCUPATION	NUMBER (%)
Farming operators and managers	47 (36%)
Transportation and material moving occupations	18 (14%)
Other agricultural and related occupations	17 (13%)
Handlers, equipment cleaners, helpers, and laborers	11 (8%)
Technicians and related support occupations	7 (5%)



WORK-RELATED FATALITIES BY MAJOR INDUSTRY



NP indicates no data reported or data that do not meet publication criteria.