

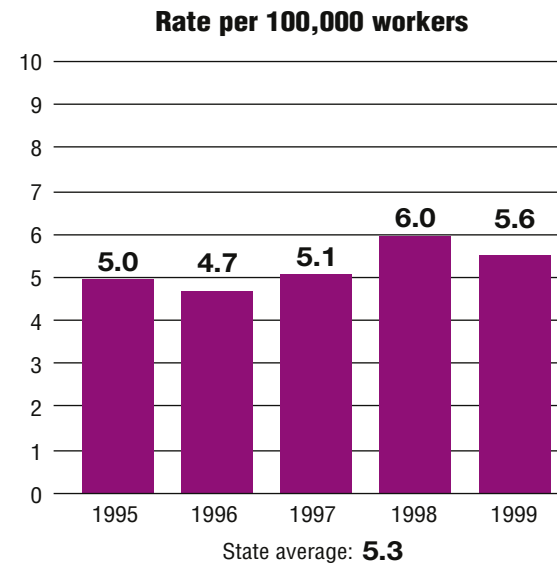
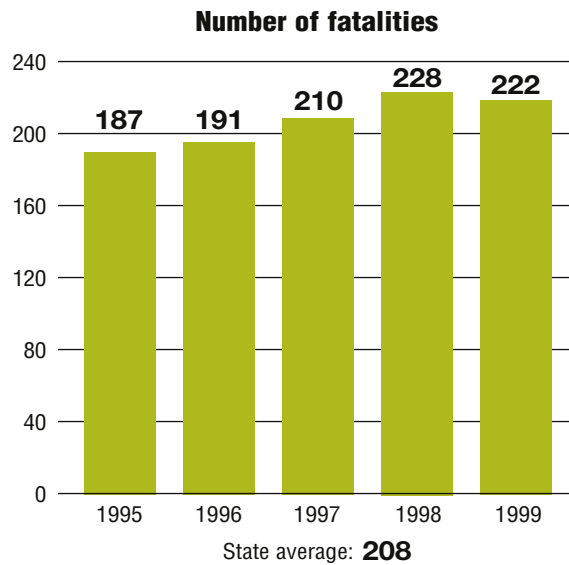
Total fatalities, 1995–99: **1,038**

Average fatalities per year: **208**

Five-year average fatality rate: **5.3**

# North Carolina

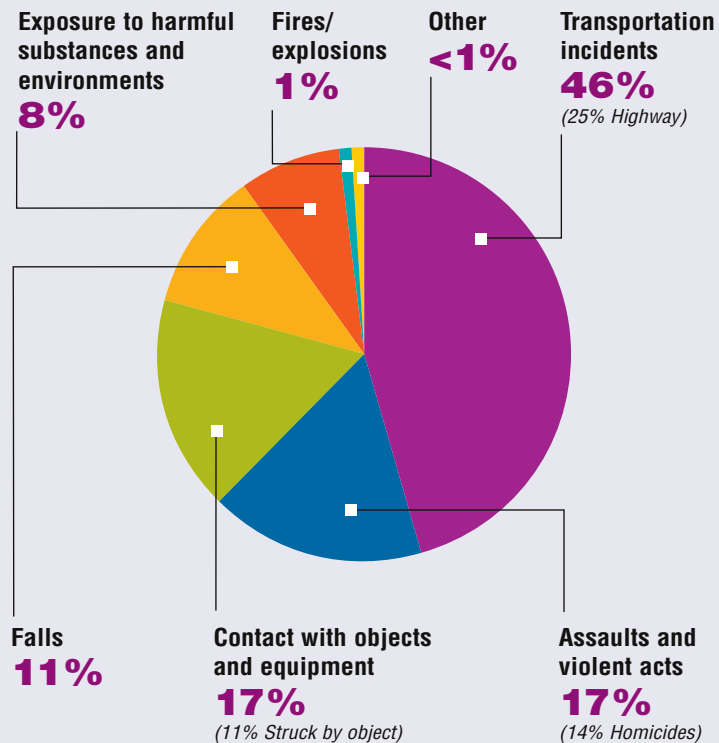
## WORK-RELATED FATALITY NUMBERS AND RATES\*



EMPLOYEE STATUS		GENDER		AGE		RACE	
Wage/Salary worker	<b>793</b>	Male	<b>973</b>	Under 20	<b>30</b>	White	<b>765</b>
Self-employed	<b>245</b>	Female	<b>65</b>	20 to 34	<b>336</b>	Black/African American	<b>180</b>
				35 to 54	<b>412</b>	Hispanic/Latino	<b>65</b>
				55 and older	<b>259</b>	Other races/Not reported	<b>28</b>

\*Please see caveats regarding the calculation of State rates in the State Profiles section introduction page and appendix II.

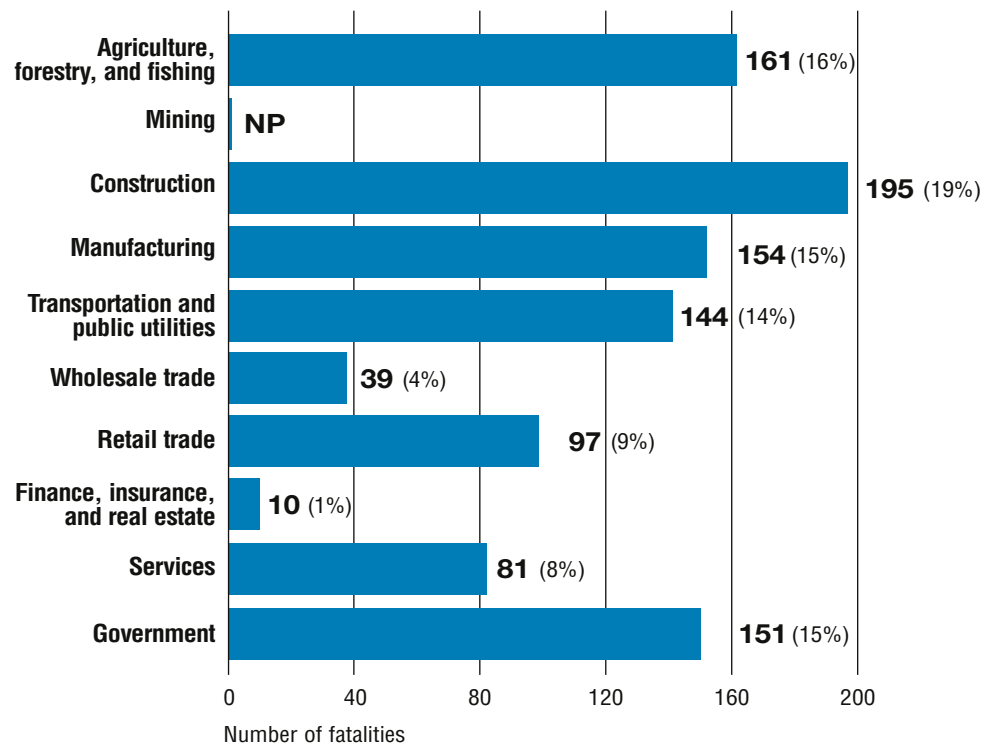
## WORK-RELATED FATALITIES BY EVENT



## OCCUPATIONS WITH THE MOST FATALITIES

OCCUPATION	NUMBER (%)
Transportation and material moving occupations	236 (23%)
Handlers, equipment cleaners, helpers, and laborers	117 (11%)
Sales occupations	90 (9%)
Construction trades	87 (8%)
Other agricultural and related occupations	75 (7%)

## WORK-RELATED FATALITIES BY MAJOR INDUSTRY



NP indicates no data reported or data that do not meet publication criteria.