

Total fatalities, 1995–99: **576**

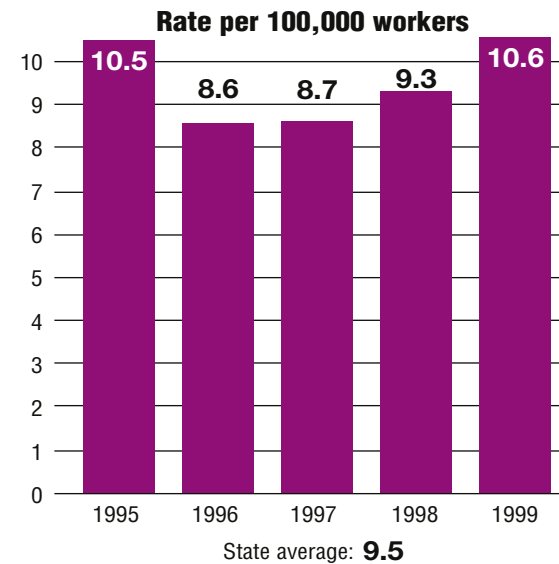
Average fatalities per year: **115**

Five-year average fatality rate: **9.5**



Mississippi

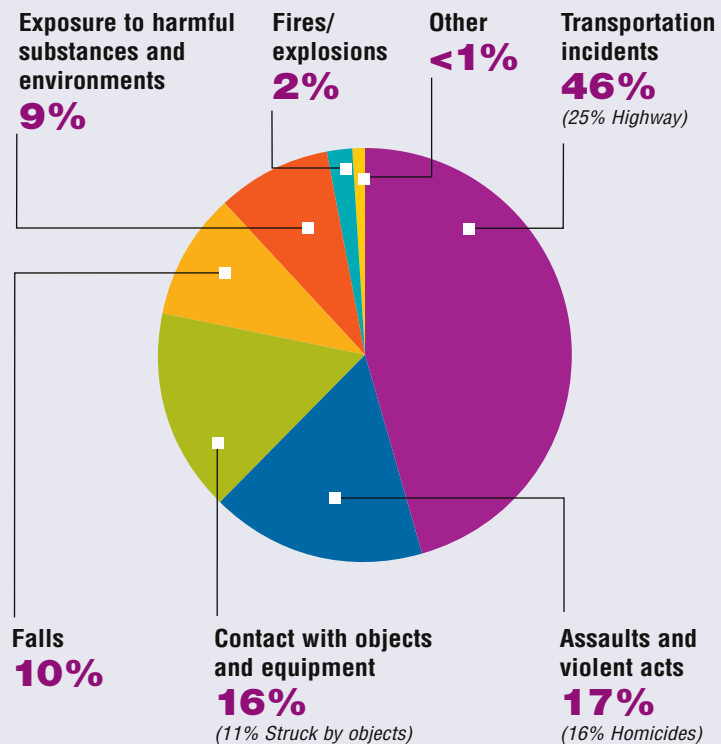
WORK-RELATED FATALITY NUMBERS AND RATES*



EMPLOYEE STATUS		GENDER		AGE		RACE	
Wage/Salary worker	448	Male	526	Under 20	22	White	383
Self-employed	128	Female	50	20 to 34	158	Black/African American	169
				35 to 54	261	Hispanic/Latino	12
				55 and older	135	Other races/Not reported	12

*Please see caveats regarding the calculation of State rates in the State Profiles section introduction page and appendix II.

WORK-RELATED FATALITIES BY EVENT



OCCUPATIONS WITH THE MOST FATALITIES

OCCUPATION	NUMBER (%)
Transportation and material moving occupations	145 (25%)
Handlers, equipment cleaners, helpers, and laborers	59 (10%)
Construction trades	51 (9%)
Sales occupations	50 (9%)
Forestry and logging occupations	46 (8%)



WORK-RELATED FATALITIES BY MAJOR INDUSTRY

