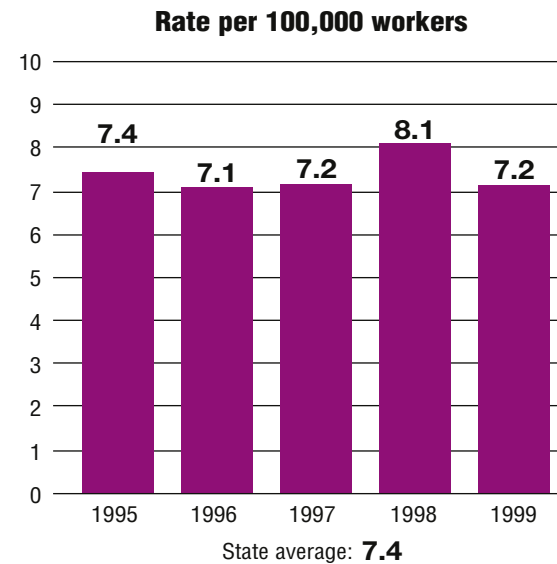


Total fatalities, 1995–99:	710
Average fatalities per year:	142
Five-year average fatality rate:	7.4

Louisiana

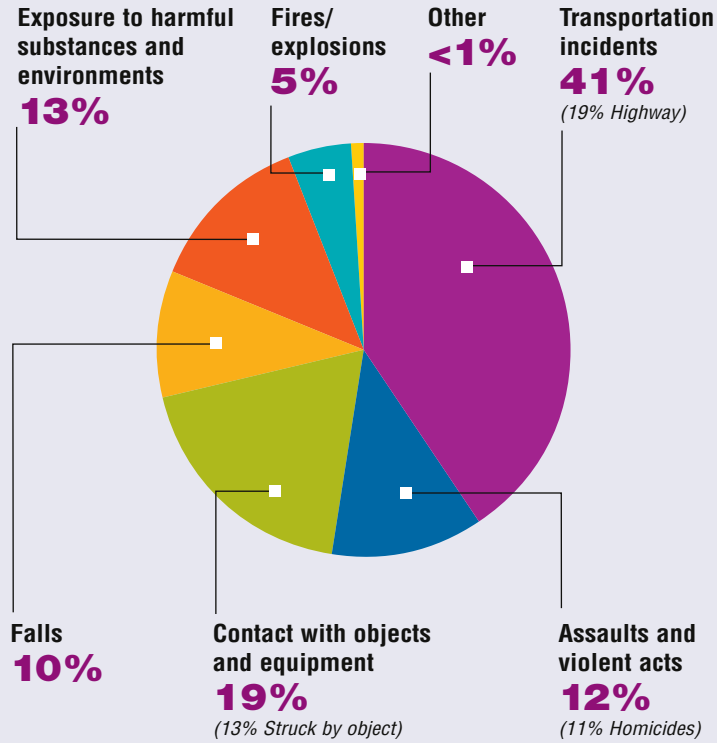
WORK-RELATED FATALITY NUMBERS AND RATES*



EMPLOYEE STATUS		GENDER		AGE		RACE	
Wage/Salary worker	657	Male	655	Under 20	27	White	459
Self-employed	53	Female	55	20 to 34	250	Black/African American	188
				35 to 54	320	Hispanic/Latino	9
				55 and older	113	Other races/Not reported	54

*Please see caveats regarding the calculation of State rates in the State Profiles section introduction page and appendix II.

WORK-RELATED FATALITIES BY EVENT



OCCUPATIONS WITH THE MOST FATALITIES

OCCUPATION	NUMBER (%)
Transportation and material moving occupations	189 (27%)
Handlers, equipment cleaners, helpers, and laborers	85 (12%)
Construction trades	67 (9%)
Machine operators, assemblers, and inspectors	39 (5%)
Protective service occupations	35 (5%)



WORK-RELATED FATALITIES BY MAJOR INDUSTRY

