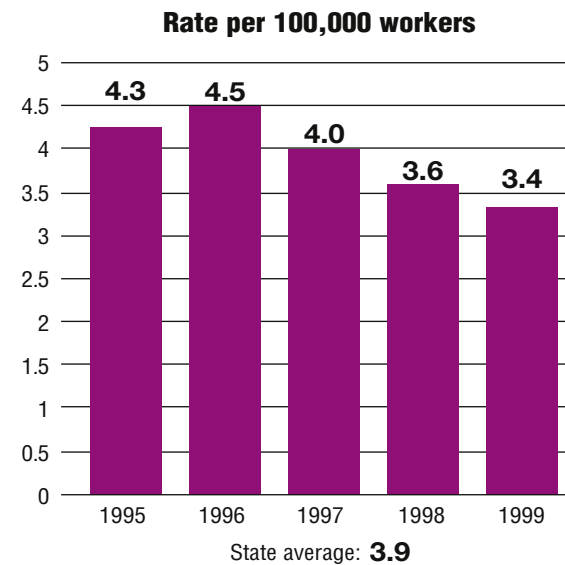


Total fatalities, 1995–99:	1,176
Average fatalities per year:	235
Five-year average fatality rate:	3.9



Illinois

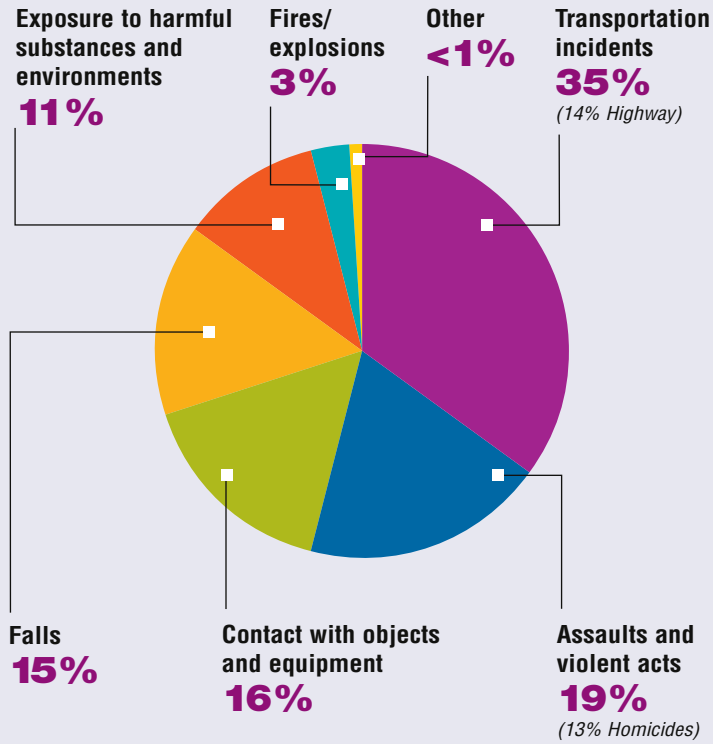
WORK-RELATED FATALITY NUMBERS AND RATES*



EMPLOYEE STATUS		GENDER		AGE		RACE	
Wage/Salary worker	898	Male	1,107	Under 20	30	White	934
Self-employed	278	Female	69	20 to 34	265	Black/African American	126
				35 to 54	581	Hispanic/Latino	97
				55 and older	300	Other races/Not reported	19

*Please see caveats regarding the calculation of State rates in the State Profiles section introduction page and appendix II.

WORK-RELATED FATALITIES BY EVENT



OCCUPATIONS WITH THE MOST FATALITIES

OCCUPATION	NUMBER (%)
Transportation and material moving occupations	238 (20%)
Handlers, equipment cleaners, helpers, and laborers	154 (13%)
Construction trades	139 (12%)
Farming operators and managers	117 (10%)
Executive, administrative, and managerial	96 (8%)



WORK-RELATED FATALITIES BY MAJOR INDUSTRY

