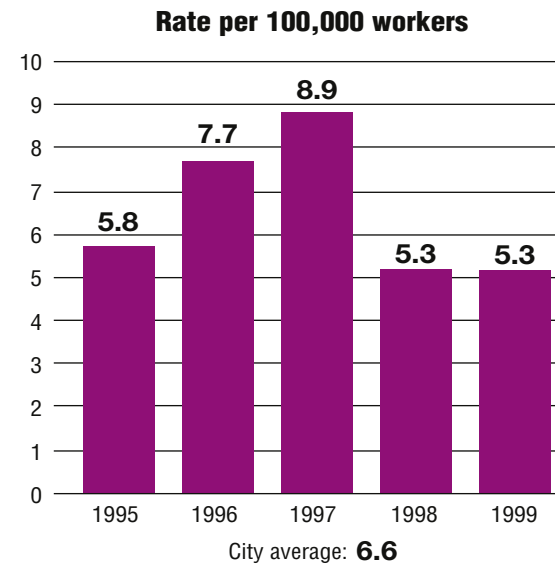


Total fatalities, 1995–99:	85
Average fatalities per year:	17
Five-year average fatality rate:	6.6



District of Columbia

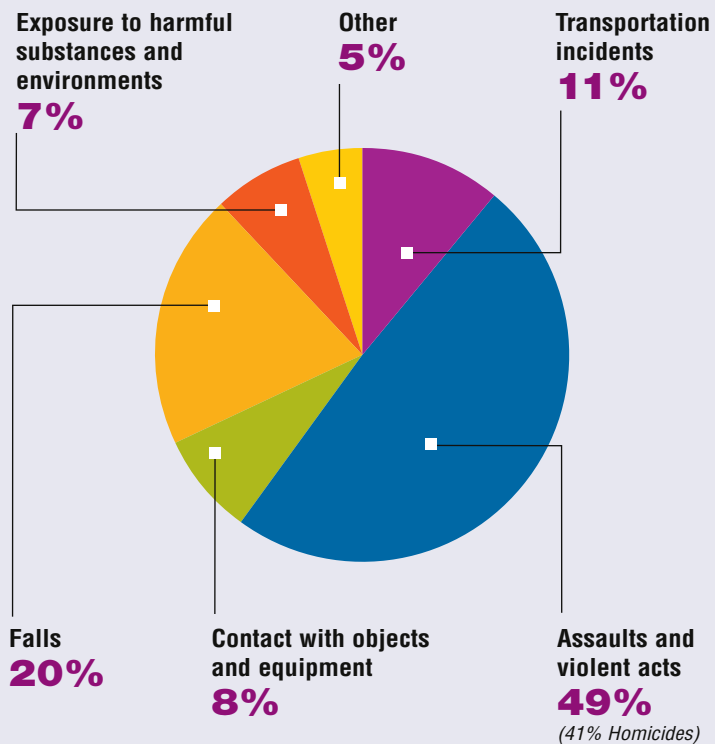
WORK-RELATED FATALITY NUMBERS AND RATES*



EMPLOYEE STATUS		GENDER		AGE		RACE	
Wage/Salary worker	71	Male	80	Under 20	—	White	25
Self-employed	14	Female	5	20 to 34	29	Black/African American	43
				35 to 54	36	Hispanic/Latino	11
				55 and older	17	Other races/Not reported	6

*Please see caveats regarding the calculation of State rates in the State Profiles section introduction page and appendix II.

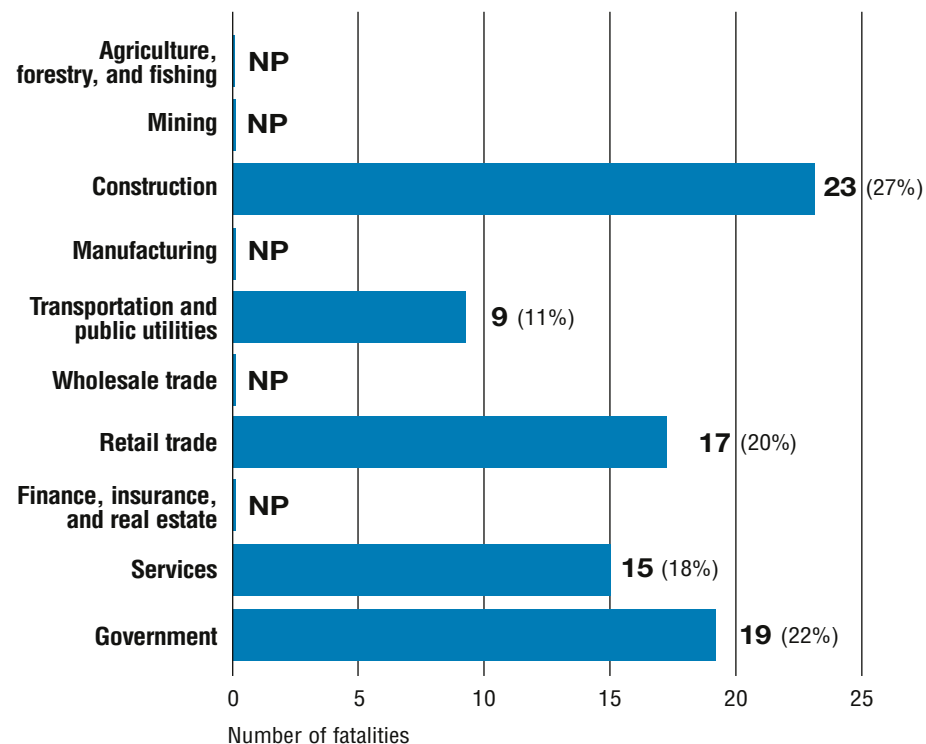
WORK-RELATED FATALITIES BY EVENT



OCCUPATIONS WITH THE MOST FATALITIES

OCCUPATION	NUMBER (%)
Protective service occupations	20 (24%)
Executive, administrative, and managerial	10 (12%)
Construction trades	9 (11%)
Handlers, equipment cleaners, helpers, and laborers	7 (8%)
Sales occupations	6 (7%)

WORK-RELATED FATALITIES BY MAJOR INDUSTRY



NP indicates no data reported or data that do not meet publication criteria.