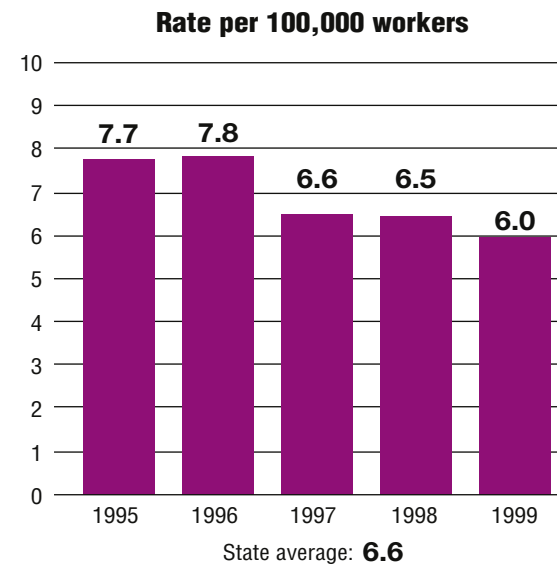
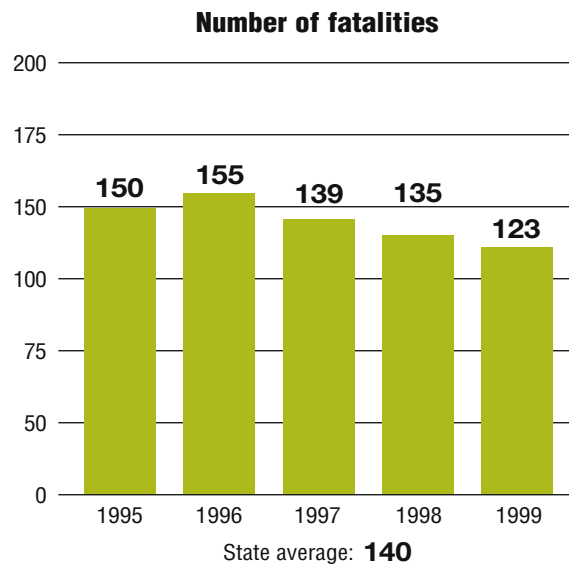


Total fatalities, 1995–99:	702
Average fatalities per year:	140
Five-year average fatality rate:	6.6



Alabama

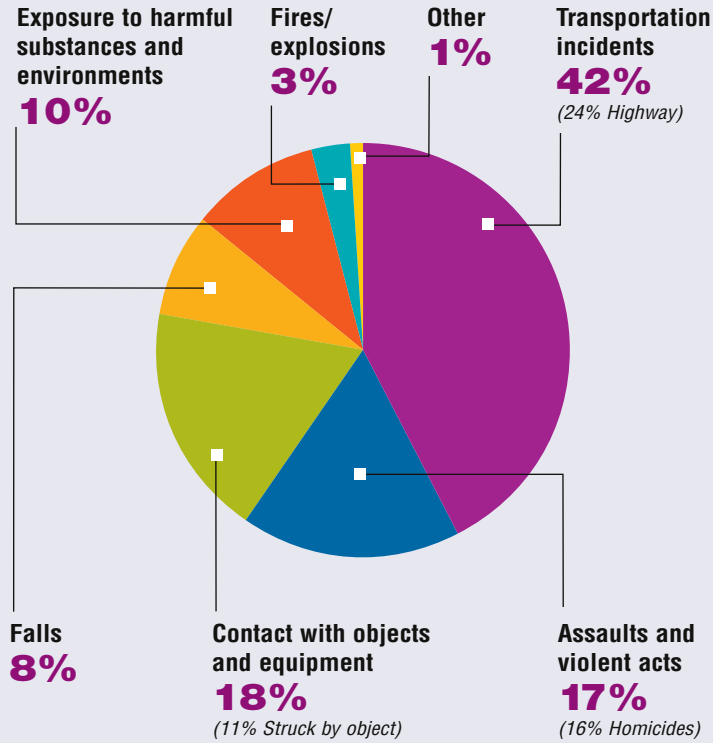
WORK-RELATED FATALITY NUMBERS AND RATES*



EMPLOYEE STATUS		GENDER		AGE		RACE	
Wage/Salary worker	612	Male	651	Under 20	11	White	541
Self-employed	90	Female	51	20 to 34	221	Black/African American	144
				35 to 54	330	Hispanic/Latino	8
				55 and older	140	Other races/Not reported	9

*Please see caveats regarding the calculation of State rates in the State Profiles section introduction page and appendix II.

WORK-RELATED FATALITIES BY EVENT



OCCUPATIONS WITH THE MOST FATALITIES

OCCUPATION	NUMBER (%)
Transportation and material moving occupations	156 (22%)
Sales occupations	72 (10%)
Construction trades	67 (10%)
Handlers, equipment cleaners, helpers, and laborers	60 (9%)
Executive, administrative, and managerial	49 (7%)



WORK-RELATED FATALITIES BY MAJOR INDUSTRY

