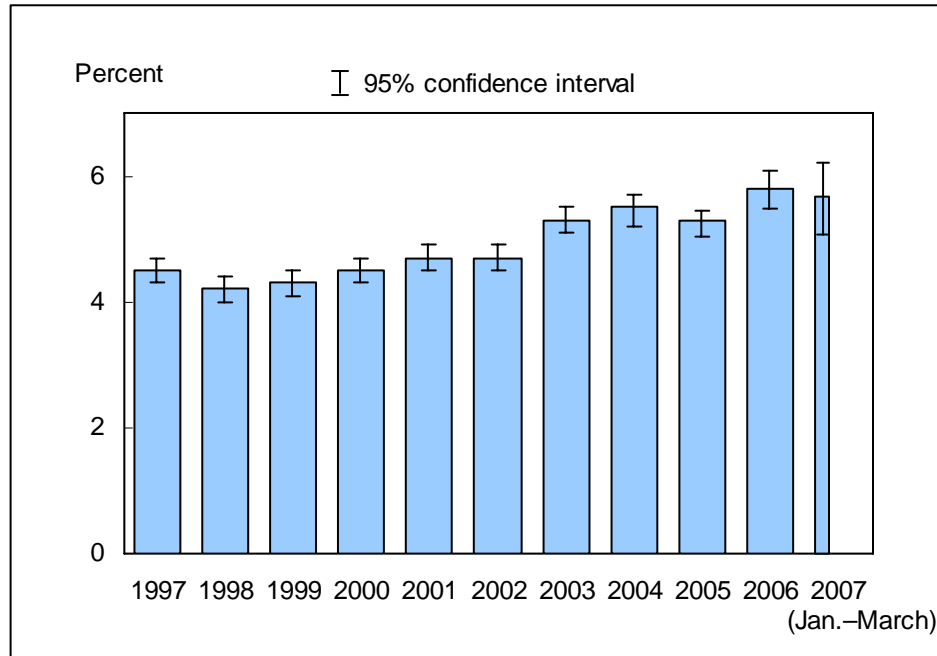


**Figure 3.1. Percentage of persons of all ages who failed to obtain needed medical care due to cost at some time during the past 12 months: United States, 1997–March 2007**

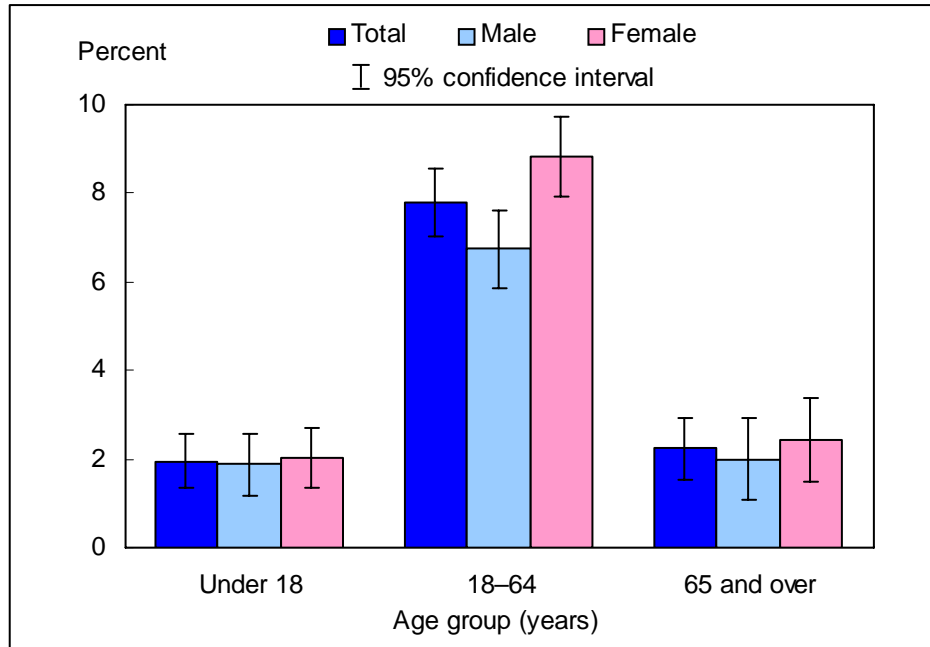


NOTES: The analyses excluded persons with unknown responses to the question on failure to obtain needed medical care due to cost (about 0.5% of respondents each year). Beginning with the 2003 data, the National Health Interview Survey (NHIS) transitioned to weights derived from the 2000 census. In this Early Release, estimates for 2000–2002 were recalculated using weights derived from the 2000 census. See “About This Early Release” and Table III in the Appendix for more details.

DATA SOURCE: Family Core component of the 1997–2007 NHIS. The estimate for 2007 was based on data collected from January through March. Data are based on household interviews of a sample of the civilian noninstitutionalized population.

- In early 2007, 5.7% (95% confidence interval = 5.11–6.22%) of the population was unable to obtain needed medical care due to cost at some time during the past 12 months, which was not significantly different from the 2006 estimate of 5.8%.
- From 1998 to 2006, there was generally an increasing trend in the annual percentage of persons who experienced this lack of access to medical care (4.2% in 1998 to 5.8% in 2006).

**Figure 3.2. Percentage of persons of all ages who failed to obtain needed medical care due to cost at some time during the past 12 months, by age group and sex: United States, January–March 2007**

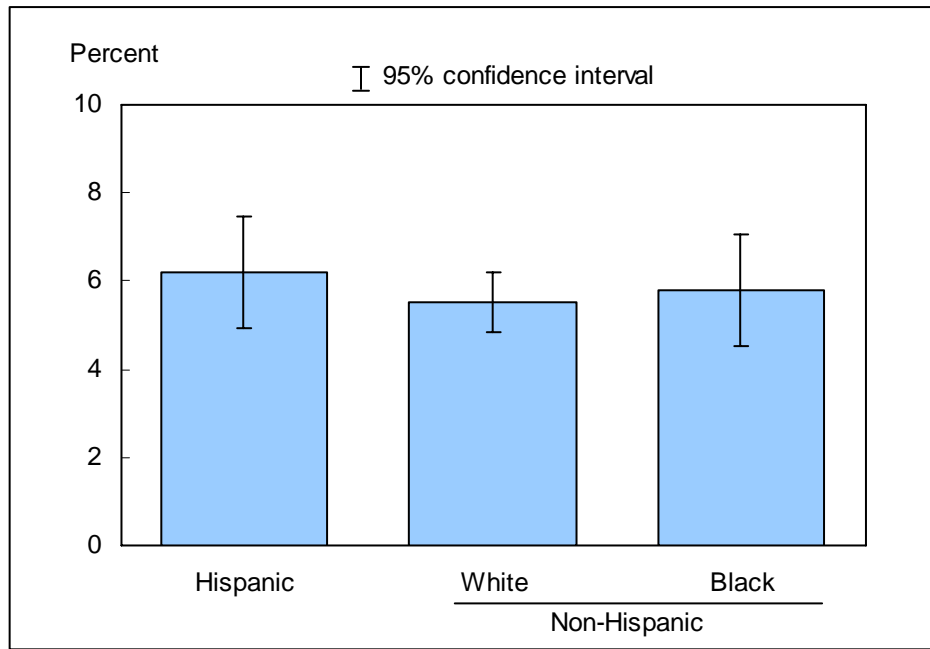


NOTE: The analyses excluded 32 persons (0.2%) with unknown responses to the question on failure to obtain needed medical care due to cost.

DATA SOURCE: Based on data collected from January through March in the Family Core component of the 2007 National Health Interview Survey. Data are based on household interviews of a sample of the civilian noninstitutionalized population.

- For both sexes combined, the percentage of persons who were unable to obtain needed medical care due to cost at some time during the past 12 months was 2.0% for those aged under 18 years, 7.8% for those aged 18–64 years, and 2.2% for those aged 65 years and over.
- Adults aged 18–64 years were more likely to have lacked access to medical care due to cost during the past 12 months compared with children aged under 18 years and adults aged 65 years and over. This pattern was seen among males and females.

**Figure 3.3. Age-sex-adjusted percentage of persons of all ages who failed to obtain needed medical care due to cost at some time during the past 12 months, by race/ethnicity: United States, January–March 2007**



NOTES: The analyses excluded 32 persons (0.2%) with unknown responses to the question on failure to obtain needed medical care due to cost. Estimates are age-sex adjusted using the projected 2000 U.S. population as the standard population and using three age groups: under 18 years, 18–64 years, and 65 years and over.

DATA SOURCE: Based on data collected from January through March in the Family Core component of the 2007 National Health Interview Survey. Data are based on household interviews of a sample of the civilian noninstitutionalized population.

- After adjusting for age and sex, 6.2% of Hispanic persons, 5.5% of non-Hispanic white persons, and 5.8% of non-Hispanic black persons were unable to obtain needed medical care due to cost at some time during the year preceding the interview.
- The percentage of persons who were unable to obtain needed medical care due to cost at some time during the year preceding the interview did not differ significantly across the three race/ethnicity groups.

## Data tables for Figures 3.1–3.3:

### Data table for Figure 3.1. Percentage of persons of all ages who failed to obtain needed medical care due to cost at some time during the past 12 months: United States, 1997–March 2007

Year	Percent (95% confidence interval)	
	Crude <sup>1</sup>	Age-adjusted <sup>2</sup>
1997	4.5 (4.3-4.7)	4.5 (4.4-4.7)
1998	4.2 (4.0-4.4)	4.2 (4.0-4.4)
1999	4.3 (4.1-4.5)	4.3 (4.1-4.5)
2000	4.5 (4.3-4.7)	4.5 (4.2-4.7)
2001	4.7 (4.5-4.9)	4.7 (4.5-4.9)
2002	4.7 (4.5-4.9)	4.7 (4.5-4.9)
2003	5.3 (5.1-5.5)	5.2 (5.0-5.5)
2004	5.5 (5.2-5.7)	5.4 (5.2-5.6)
2005	5.3 (5.05-5.45)	5.2 (4.99-5.40)
2006	5.8 (5.49-6.07)	5.7 (5.42-6.00)
January–March 2007	5.7 (5.11-6.22)	5.6 (5.04-6.13)

NOTES: Beginning with the 2003 data, the National Health Interview Survey (NHIS) transitioned to weights derived from the 2000 census. In this Early Release, estimates for 2000–2002 were recalculated using weights derived from the 2000 census. See “About This Early Release” and Table III in the Appendix for more details.

DATA SOURCE: NHIS, 1997–March 2007. Data are based on household interviews of a sample of the civilian noninstitutionalized population.

**Data table for Figure 3.2. Percentage of persons of all ages who failed to obtain needed medical care due to cost at some time during the past 12 months, by age group and sex: United States, January–March 2007**

Age and sex	Percent	95% confidence interval
<b>Under 18 years</b>		
Total	2.0	1.36-2.55
Male	1.9	1.18-2.59
Female	2.0	1.34-2.71
<b>18–64 years</b>		
Total	7.8	7.04-8.54
Male	6.7	5.85-7.62
Female	8.8	7.91-9.72
<b>65 years and over</b>		
Total	2.2	1.54-2.95
Male	2.0	1.10-2.91
Female	2.4	1.47-3.37
<b>All ages: crude<sup>1</sup></b>		
Total	5.7	5.11-6.22
Male	5.0	4.33-5.61
Female	6.3	5.66-6.98
<b>All ages: age-adjusted<sup>2</sup></b>		
Total	5.6	5.04-6.13
Male	4.9	4.26-5.51
Female	6.3	5.60-6.91

<sup>1</sup>Crude estimates are presented in the figure.

<sup>2</sup>Estimates for this Healthy People 2010 Leading Health Indicator are age adjusted using the projected 2000 U.S. population as the standard population and using three age groups: under 18 years, 18–64 years, and 65 years and over.

DATA SOURCE: National Health Interview Survey, January–March 2007. Data are based on household interviews of a sample of the civilian noninstitutionalized population.

**Data table for Figure 3.3. Age-sex-adjusted percentage of persons of all ages who failed to obtain needed medical care due to cost at some time during the past 12 months, by race/ethnicity: United States, January–March 2007**

Race/ethnicity	Percent <sup>1</sup>	95% confidence interval
<b>Hispanic or Latino</b>	6.2	4.95-7.48
<b>Not Hispanic or Latino:</b>		
<b>White, single race</b>	5.5	4.86-6.19
<b>Black, single race</b>	5.8	4.51-7.05

<sup>1</sup>Estimates are age-sex adjusted using the projected 2000 U.S. population as the standard population and using three age groups: under 18 years, 18–64 years, and 65 years and over.

DATA SOURCE: National Health Interview Survey, January–March 2007. Data are based on household interviews of a sample of the civilian noninstitutionalized population.