

### Contents of this document

1. Why create customized views?
2. Creating a LOINC-SNOMED-Condition crosswalk table

### Why create customized views?

The PHIN Notifiable Condition Mapping Tables (PHIN NCMTs) contain a lot of information – much more than any single view can reveal. There are two quick ways users can view the tables differently:

- Sorting the spreadsheets to rearrange the data.
- Hiding or un-hiding columns to put particular columns next to each other.

Reshuffling the data in each table is useful but users are still limited viewing the data in the specific tables.

That is why the PHIN NCMTs were designed to be imported into a relational database. This makes it possible for users to perform queries and create entirely different views of the data. This document demonstrates the process of importing the tables into a database, creating relationships, performing queries, and producing customized views of the data.

### Creating a LOINC-SNOMED-Condition crosswalk table

None of the PHIN Notifiable Condition Mapping Tables show the condition, the LOINC code, and the SNOMED code all in a single view. This type of view is easy to create. The process is described here using Microsoft Access.

Step 1: Create a new Microsoft Access database and import the following three tables.

- Loinc to Condition – Part 1
- Loinc to Condition – Part 2
- Snomed to Organism List

*Note: You can use either the Style A or Style B mappings.*

Step 2: Copy and paste to make a new table: *Loinc to Condition - All*

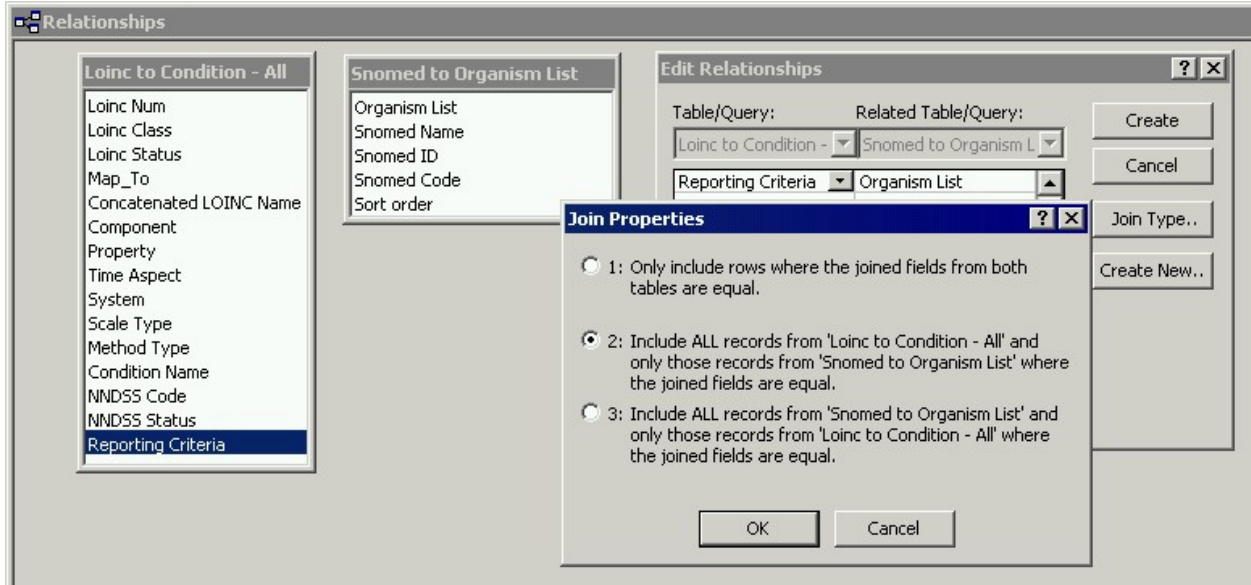
LOINC to Condition - Part 1
Loinc Num
Loinc Class
Loinc Status
Map To
Concatenated LOINC Name
Component
Property
Time Aspect
System
Scale
Method
Condition Name
NNDSS Code
NNDSS Status
Reporting Criteria
Sort order

LOINC to Condition - Part 2
Loinc Num
Loinc Class
Loinc Status
Map To
Concatenated LOINC Name
Component
Property
Time Aspect
System
Scale
Method
Condition Name
NNDSS Code
NNDSS Status
Reporting Criteria
Sort order

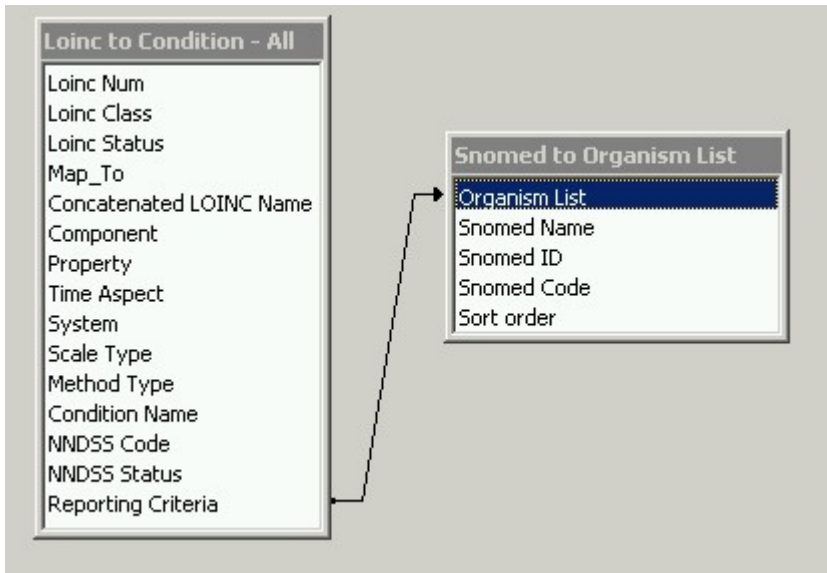
LOINC to Condition - All
Loinc Num
Loinc Class
Loinc Status
Map To
Concatenated LOINC Name
Component
Property
Time Aspect
System
Scale
Method
Condition Name
NNDSS Code
NNDSS Status
Reporting Criteria
Sort order

*You should delete the Sort order column.*

**Step 3:** Open the Relationships window and Right-click to show the tables. Select *Loinc to Condition - All* and *Snomed to Organism List*. Then create a relationship between the two tables, as shown in the image below.



Click OK to create the join between *LOINC to Condition* and *SNOMED to Organism List*.



Step 4: Now you can set up the query. You can keep any columns you need in the new crosswalk table. This example shows six columns in the new table:

Crosswalk table
Loinc Num
Concatenated LOINC Name
Condition Name
Organism List
SNOMED Name
SNOMED Code

Step 5: You can review the new table in Access and change column order or column names as needed.

One thing you can do at this stage is to sort the table alphabetically on the condition column. This will put all rows with "--No Condition--" at the top. These rows can be deleted. They are only in the LOINC to Condition table to show LOINC tests that couldn't be mapped to notifiable conditions.

You might also want to remove the word "Positive" from the Organism List Column. These are the rows in which the reporting criterion is a positive test, not an Organism List. The utility of the crosswalk table is that it shows the SNOMED organisms along with LOINC tests and notifiable conditions in a single view. The word "Positive" is extraneous in this table and can be deleted.

Crosswalk Table : Table						
Loinc Num	Concatenated Loinc Name	Condition Name	Organism List	Snomed Code	Snomed Name	
6313-1	Blastomyces dermatitidis Ag : ACnc : Pt : Ser : Ord : EIA	Blastomycosis	Positive			
7816-2	Blastomyces dermatitidis Ab : ACnc : Pt : Ser : Ord : zzz	Blastomycosis	Positive			
9494-6	Blastomyces dermatitidis Ab.IgG : ACnc : Pt : Ser : Qn : zzz	Blastomycosis	Positive			
13315-7	Microorganism identified : PrId : 24h : Ur : Nom : Urine culture	Blastomycosis	Blastomyces list	L-44170	Blastomyces	
13315-7	Microorganism identified : PrId : 24h : Ur : Nom : Urine culture	Blastomycosis	Blastomyces list	L-44171	Blastomyces dermatitidis	
13315-7	Microorganism identified : PrId : 24h : Ur : Nom : Urine culture	Blastomycosis	Blastomyces list	L-44172	Blastomyces species	

You can use the Find and Replace wizard in Access to replace "Positive" with nothing by leaving the Replace field in the wizard blank.

Step 6: The crosswalk table is now finished. You can export it to a Microsoft Excel file or a text file.