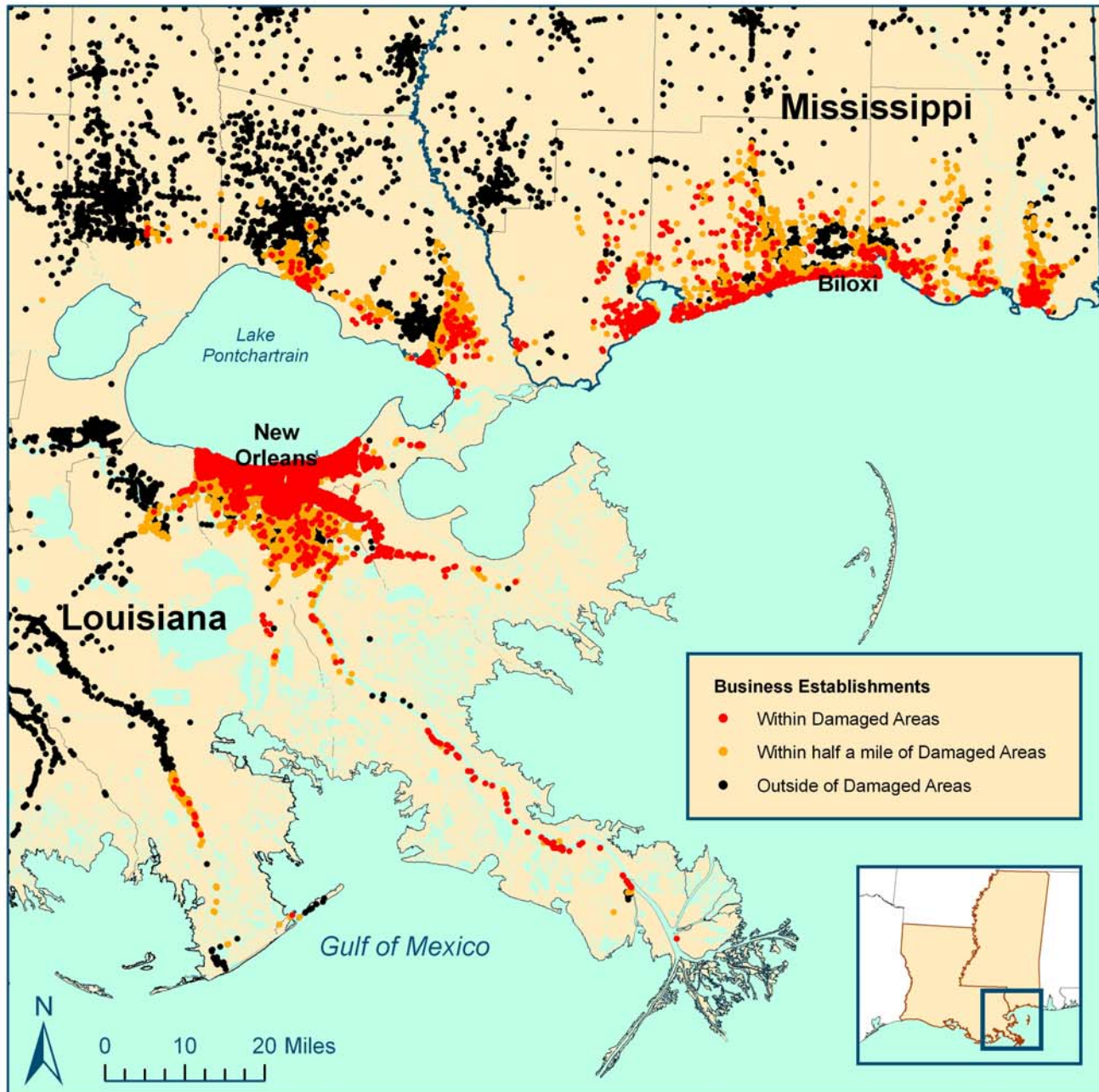


# Business Establishments within Katrina-Damaged Areas as Identified by FEMA Louisiana and Mississippi



## Louisiana

17% of Louisiana's employment was within the FEMA Identified Damage Areas

| Business Establishments | Employees | Quarterly Wages |
|-------------------------|-----------|-----------------|
| 18,997                  | 316,063   | \$3,047,142,670 |

27% was inside or within half a mile of the FEMA Identified Damage Areas

| Business Establishments | Employees | Quarterly Wages |
|-------------------------|-----------|-----------------|
| 31,133                  | 499,650   | \$4,668,063,720 |

## Mississippi

5% of Mississippi's employment was within the FEMA Identified Damage Areas

| Business Establishments | Employees | Quarterly Wages |
|-------------------------|-----------|-----------------|
| 3,352                   | 55,081    | \$419,139,867   |

13% was inside or within half a mile of the FEMA Identified Damage Areas

| Business Establishments | Employees | Quarterly Wages |
|-------------------------|-----------|-----------------|
| 7,718                   | 136,406   | \$1,082,573,551 |

## Data source:

Quarterly Census of Employment and Wages (QCEW), developed through a cooperative program between the states and the U.S. Bureau of Labor Statistics. FEMA Imagery Derived Assessment Damage Areas September 6, 2005, [www.gismaps.fema.gov](http://www.gismaps.fema.gov)

## Data notes:

Employment is from December 2004. Quarterly Wages are the total paid for the Fourth Quarter of 2004. Data are adjusted to include business establishments for whom accurate addresses are not available.

## Cartography by:

State of California  
Employment Development Department  
[www.labormarketinfo.ca.gov](http://www.labormarketinfo.ca.gov)  
September 2005

