

News

United States
Department
of Labor



Bureau of Labor Statistics

Washington, D.C. 20212

Technical information:

Employment: (202) 691-6559
<http://www.bls.gov/sae/>

USDL 08-1772

Unemployment: (202) 691-6392
<http://www.bls.gov/lau/>

For release: 10:00 A.M. (EST)

Media contact: (202) 691-5902

Tuesday, December 2, 2008

METROPOLITAN AREA EMPLOYMENT AND UNEMPLOYMENT: OCTOBER 2008

Unemployment rates were higher in October than a year earlier in 361 of the 369 metropolitan areas and lower in 8 areas, the Bureau of Labor Statistics of the U.S. Department of Labor reported today. Thirteen areas recorded jobless rates of at least 10.0 percent, while 11 areas registered rates below 3.0 percent. The national unemployment rate in October was 6.1 percent, not seasonally adjusted, up from 4.4 percent a year earlier.

Metropolitan Area Unemployment (Not Seasonally Adjusted)

In October, 98 metropolitan areas reported jobless rates of at least 7.0 percent, up from 16 areas a year earlier, while 43 areas posted rates below 4.0 percent, down from 151 areas in October 2007. El Centro, Calif., and neighboring Yuma, Ariz., continued to record the highest unemployment rates, 27.6 and 19.5 percent, respectively. Bismarck, N.D., registered the lowest jobless rate, 2.2 percent, followed by Logan, Utah-Idaho, at 2.4 percent. Overall, 148 areas posted unemployment rates above the U.S. figure of 6.1 percent, 216 areas reported rates below it, and 5 areas had the same rate. (See table 1 and the map.)

El Centro, Calif., recorded the largest jobless rate increase from October 2007 (+6.8 percentage points), followed by Elkhart-Goshen, Ind. (+6.3 points). An additional 31 areas registered over-the-year unemployment rate increases of 3.0 percentage points or more, and another 92 areas had rate increases of 2.0 to 2.9 points. Jonesboro, Ark., experienced the largest jobless rate decrease from a year earlier (-0.6 percentage point). Fort Smith, Ark.-Okla., and Morgantown, W.Va., reported the next largest rate decreases (-0.4 percentage point each).

Of the 49 metropolitan areas with a Census 2000 population of 1 million or more, Riverside-San Bernardino-Ontario, Calif., reported the highest unemployment rate in October, 9.5 percent. Eight additional large areas posted rates of 7.0 percent or more. The large area with the lowest jobless rate in October was Washington-Arlington-Alexandria, D.C.-Va.-Md.-W.Va., 4.1 percent. Oklahoma City, Okla., had the next lowest rate, 4.2 percent. All 49 large areas registered higher unemployment rates than in October 2007. The areas with the largest jobless rate increases from a year earlier were Providence-Fall River-Warwick, R.I.-Mass. (+3.8 percentage points), and Riverside-San Bernardino-Ontario, Calif. (+3.2 points). Fourteen additional large areas recorded over-the-year unemployment rate increases of 2.0 percentage points or more, and 29 other areas had rate increases of at least 1.0 point.

Metropolitan Division Unemployment (Not Seasonally Adjusted)

Eleven of the most populous metropolitan areas are composed of 34 metropolitan divisions, which are essentially separately identifiable employment centers. In October, Detroit-Livonia-Dearborn, Mich., again registered the highest division jobless rate, 10.1 percent, followed by Los Angeles-Long Beach-Glendale, Calif., at 8.2 percent, and Lawrence-Methuen-Salem, Mass.-N.H., at 8.1 percent. Bethesda-Frederick-Gaithersburg, Md., continued to report the lowest unemployment rate among the divisions, 3.7 percent. Nashua, N.H.-Mass., posted the next lowest rate, 3.8 percent. (See table 2.)

In October, all 34 metropolitan divisions again recorded over-the-year jobless rate increases. Los Angeles-Long Beach-Glendale, Calif., experienced the largest rate increase (+3.2 percentage points). West Palm Beach-Boca Raton-Boynton Beach, Fla., registered the next largest unemployment rate increase (+2.7 percentage points). Six additional divisions reported over-the-year rate increases of 2.0 percentage points or more.

In 7 of the 11 metropolitan areas that contain divisions, the ranges between the highest and lowest division jobless rates were 1.0 percentage point or more in October. Boston-Cambridge-Quincy, Mass.-N.H., posted the largest rate difference among its divisions, 4.3 percentage points (Lawrence-Methuen-Salem, Mass.-N.H., 8.1 percent, compared with Nashua, N.H.-Mass., 3.8 percent).

Metropolitan Area Nonfarm Employment (Not Seasonally Adjusted)

Among the 310 metropolitan areas for which nonfarm payroll data were available in October 2008, 125 metropolitan areas reported over-the-year employment gains, 169 reported losses, and 16 had no change. The largest over-the-year employment increase was recorded in Houston-Sugar Land-Baytown, Texas (+52,300), followed by Dallas-Fort Worth-Arlington, Texas (+50,000), Washington-Arlington-Alexandria, D.C.-Va.-Md.-W.Va. (+35,700), and San Antonio, Texas (+17,900). The largest over-the-year percentage gain in employment was reported in Grand Junction, Colo. (+3.9 percent), followed by McAllen-Edinburg-Mission, Texas (+3.6 percent), Laredo, Texas (+3.2 percent), and College Station-Bryan, Texas (+2.6 percent). (See table 3.)

The largest over-the-year decreases in employment occurred in Detroit-Warren-Livonia, Mich. (-55,700), Los Angeles-Long Beach-Santa Ana, Calif. (-50,600), Phoenix-Mesa-Scottsdale, Ariz. (-49,300), Atlanta-Sandy Springs-Marietta, Ga. (-44,800), and Miami-Fort Lauderdale-Pompano Beach, Fla. (-40,500). The largest over-the-year percentage decreases in employment were reported in Lake Havasu City-Kingman, Ariz. (-6.1 percent), Flint, Mich. (-5.7 percent), Elkhart-Goshen, Ind. (-4.5 percent), Dalton, Ga. (-3.7 percent), and Cape Coral-Fort Myers, Fla., and St. George, Utah (-3.5 percent each).

Over the year, nonfarm employment rose in 16 of the 38 metropolitan areas with annual average employment levels above 750,000 in 2007. The largest over-the-year percentage increase in employment was posted in San Antonio, Texas (+2.1 percent), followed by Houston-Sugar Land-Baytown, Texas (+2.0 percent), Austin-Round Rock, Texas (+1.9 percent), Virginia Beach-Norfolk-Newport News, Va.-N.C. (+1.8 percent), and Dallas-Fort Worth-Arlington, Texas (+1.7 percent). Among the large areas, the largest over-the-year percentage decreases in employment were recorded in Detroit-Warren-Livonia, Mich. (-2.8 percent), Phoenix-Mesa-Scottsdale, Ariz. (-2.6 percent), and Atlanta-Sandy Springs-Marietta, Ga., and Riverside-San Bernardino-Ontario, Calif. (-1.8 percent each).

Metropolitan Division Nonfarm Employment (Not Seasonally Adjusted)

Nonfarm payroll employment data were available in October 2008 for 32 metropolitan divisions, which are essentially separately identifiable employment centers within a metropolitan area. Thirteen of the 32 metropolitan divisions reported over-the-year employment gains while 18 reported losses and one had no change. The largest over-the-year employment gain in the metropolitan divisions occurred in Dallas-Plano-Irving, Texas (+34,800), followed by Washington-Arlington-Alexandria, D.C.-Va.-Md.-W.Va. (+30,900), Fort Worth-Arlington, Texas (+15,200), and Boston-Cambridge-Quincy, Mass.-N.H. (+15,000). Of the 18 metropolitan divisions that reported losses, the largest over-the-year employment decrease occurred in Santa Ana-Anaheim-Irvine, Calif. (-35,100), followed by Detroit-Livonia-Dearborn, Mich. (-29,700), Warren-Troy-Farmington Hills, Mich. (-26,000), and Oakland-Fremont-Hayward, Calif. (-22,500). (See table 4.)

The largest over-the-year percentage increases in employment among the metropolitan divisions were reported in Dallas-Plano-Irving, Texas, and Fort Worth-Arlington, Texas (+1.7 percent each), followed by Washington-Arlington-Alexandria, D.C.-Va.-Md.-W.Va. (+1.3 percent), and Boston-Cambridge-Quincy, Mass.-N.H. (+0.9 percent). Of the metropolitan divisions that reported over-the-year declines in employment, the largest decreases were in Detroit-Livonia-Dearborn, Mich. (-3.8 percent), Santa Ana-Anaheim-Irvine, Calif. (-2.3 percent), Warren-Troy-Farmington Hills, Mich. (-2.2 percent), and Fort Lauderdale-Pompano Beach-Deerfield Beach, Fla., and Oakland-Fremont-Hayward, Calif. (-2.1 percent each).

The Regional and State Employment and Unemployment release for November is scheduled to be issued on Friday, December 19. The Metropolitan Area Employment and Unemployment release for November is scheduled to be issued on Tuesday, January 6, 2009. The Metropolitan Area Employment and Unemployment release dates for the balance of 2009 can be found on the BLS Web site at http://www.bls.gov/schedule/news_release/metro.htm.

Hurricane Katrina

For October, BLS and its state partners continued to make modifications to the usual estimation procedures for the LAUS program to reflect the impact of Hurricane Katrina on the labor force statistics in affected areas. These modifications included: (1) modifying the state population controls to account for displacement due to Katrina; (2) developing labor force estimates for the New Orleans-Metairie-Kenner metropolitan area using an alternative to the model-based method; and (3) not publishing labor force estimates for the months immediately following the hurricane for the parishes within the New Orleans-Metairie-Kenner metropolitan area and cities within those parishes, where the quality of input data was severely compromised by the hurricane.

For more information on LAUS procedures and estimates for October 2008, see *Hurricane Information: Katrina and Rita* at <http://www.bls.gov/Katrina/home.htm> or call (202) 691-6392.

Technical Note

This release presents labor force and unemployment data from the Local Area Unemployment Statistics (LAUS) program (tables 1 and 2) for 369 metropolitan statistical areas and metropolitan New England City and Town Areas (NECTAs), plus 8 areas in Puerto Rico. Estimates for 34 metropolitan and NECTA divisions also are presented. Nonfarm payroll employment estimates from the Current Employment Statistics (CES) program (tables 3 and 4) are provided for most of the same areas. State estimates were previously published in the news release, *Regional and State Employment and Unemployment*, and are republished in this release for ease of reference. The LAUS and CES programs are both federal-state cooperative endeavors.

Labor force and unemployment—from the LAUS program

Definitions. The labor force and unemployment data are based on the same concepts and definitions as those used for the official national estimates obtained from the Current Population Survey (CPS), a sample survey of households that is conducted for the Bureau of Labor Statistics (BLS) by the U.S. Census Bureau. The LAUS program measures employment and unemployment on a place-of-residence basis. The universe for each is the civilian noninstitutional population 16 years of age and over. *Employed* persons are those who did any work at all for pay or profit in the reference week (the week including the 12th of the month) or worked 15 hours or more without pay in a family business or farm, plus those not working who had a job from which they were temporarily absent, whether or not paid, for such reasons as labor-management dispute, illness, or vacation. *Unemployed* persons are those who were not employed during the reference week (based on the definition above), had actively looked for a job sometime in the 4-week period ending with the reference week, and were currently available for work; persons on layoff expecting recall need not be looking for work to be counted as unemployed. The *labor force* is the sum of employed and unemployed persons. The *unemployment rate* is the number of unemployed as a percent of the labor force.

Method of estimation. Estimates for states, the District of Columbia, the Los Angeles-Long Beach-Glendale metropolitan division, and New York City are produced using time-series models with real-time benchmarking to national CPS totals. Model-based estimation was extended to the following areas and their respective balances of state in 2005: the Chicago-Naperville-Joliet, IL Metropolitan Division; Cleveland-Elyria-Mentor, OH Metropolitan Statistical Area; Detroit-Warren-Livonia, MI Metropolitan Statistical Area; Miami-Miami Beach-Kendall, FL Metropolitan Division; New Orleans-Metairie-Kenner, LA Metropolitan Statistical Area; and Seattle-Bellevue-Everett, WA Metropolitan Division. (Model-based estimation of the New Orleans-Metairie-Kenner metropolitan area was suspended following

Hurricane Katrina; the indirect estimation methods described below will be used for this area until further notice.) Modeling improves the statistical basis of the estimation for these areas and provides important tools for analysis, such as measures of errors and seasonally adjusted series. For all other substate areas in this release, estimates are prepared through indirect estimation procedures using a building-block approach. Employment estimates, which are based largely on “place of work” estimates from the CES program, are adjusted to refer to place of residence as used in the CPS. Unemployment estimates are aggregates of persons previously employed in industries covered by state unemployment insurance (UI) laws and entrants to the labor force data from the CPS. The substate estimates of employment and unemployment, which geographically exhaust the entire state, are adjusted proportionally to ensure that they add to the independently estimated state or balance-of-state totals. A detailed description of the estimation procedures is available from BLS upon request.

Annual revisions. Labor force and unemployment data shown for the prior year reflect adjustments made at the end of each year, usually implemented with January estimates. The adjusted model-based estimates reflect updated population data from the U.S. Census Bureau, any revisions in the other data sources, and model reestimation. All substate estimates are reestimated and adjusted to add to the revised model-based estimates.

Employment—from the CES program

Definitions. Employment data refer to persons on establishment payrolls who receive pay for any part of the pay period that includes the 12th of the month. Persons are counted at their place of work rather than at their place of residence; those appearing on more than one payroll are counted on each payroll. Industries are classified on the basis of their principal activity in accordance with the 2007 version of the North American Industry Classification System.

Method of estimation. The employment data are estimated using a “link relative” technique in which a ratio (link relative) of current-month employment to that of the previous month is computed from a sample of establishments reporting for both months. The estimates of employment for the current month are obtained by multiplying the estimates for the previous month by these ratios. Small-domain models are used as the official estimators for the approximately 39 percent of CES published series which have insufficient sample for direct sample-based estimates.

Annual revisions. Employment estimates are adjusted annually to a complete count of jobs, called benchmarks, derived principally from tax reports that are submitted by employers who are covered under state unemployment insurance (UI) laws. The benchmark information is used to

adjust the monthly estimates between the new benchmark and the preceding one and also to establish the level of employment for the new benchmark month. Thus, the benchmarking process establishes the level of employment, and the sample is used to measure the month-to-month changes in the level for the subsequent months.

Reliability of the estimates

The estimates presented in this release are based on sample surveys, administrative data, and modeling and, thus, are subject to sampling and other types of errors. Sampling error is a measure of sampling variability—that is, variation that occurs by chance because a sample rather than the entire population is surveyed. Survey data also are subject to nonsampling errors, such as those which can be introduced into the data collection and processing operations. Estimates not directly derived from sample surveys are subject to additional errors resulting from the particular estimation processes used. The sums of individual items may not always equal the totals shown in the same tables because of rounding. Unemployment rates are computed from unrounded data and thus may differ slightly from rates computed using the rounded data displayed in the tables.

Labor force and unemployment estimates. Model-based error measures are available for states on the BLS Web site at <http://www.bls.gov/lau/lastderr.htm>. Measures of nonsampling error are not available, but additional information on the subject is provided in *Employment and Earnings Online* at <http://www.bls.gov/opub/ee/home.htm>.

Employment estimates. Measures of sampling error for state CES data at the supersector level and for metro-

politan area CES data at the total nonfarm level are available online at <http://www.bls.gov/sae/790stderr.htm>. Information on recent benchmark revisions for states is available on the BLS Web site at <http://www.bls.gov/sae/>.

Area definitions

The substate area data published in this release reflect the standards and definitions established by the U.S. Office of Management and Budget on November 20, 2007. Data reflect New England City and Town Area (NECTA) definitions, rather than county-based definitions, in the six New England States. A detailed list of the geographic definitions is available at <http://www.bls.gov/lau/lausmsa.htm>.

Additional information

More complete information on the technical procedures used to develop these estimates and additional data appear in *Employment and Earnings Online*.

Estimates of unadjusted and seasonally adjusted labor force and unemployment data for states, census regions and divisions, and seven substate areas are available in the news release, *Regional and State Employment and Unemployment*. Estimates of labor force and unemployment for all states, metropolitan areas, labor market areas, counties, cities with a population of 25,000 or more, and other areas used in the administration of various federal economic assistance programs are available on the Internet at <http://www.bls.gov/lau/>. Employment data from the CES program are available on the BLS Web site at <http://www.bls.gov/sae/>.

Information in this release will be made available to sensory impaired individuals upon request. Voice phone: (202) 691-5200; TDD message referral phone: 1-800-877-8339.

LABOR FORCE DATA
NOT SEASONALLY ADJUSTED

LABOR FORCE DATA
NOT SEASONALLY ADJUSTED

Table 1. Civilian labor force and unemployment by state and metropolitan area

(Numbers in thousands)

State and area	Civilian labor force				Unemployed							
					Number				Percent of labor force			
	September		October		September		October		September		October	
	2007	2008	2007	2008 ^P	2007	2008	2007	2008 ^P	2007	2008	2007	2008 ^P
Alabama	2,187.4	2,168.5	2,193.0	2,182.5	77.0	114.3	72.6	118.1	3.5	5.3	3.3	5.4
Anniston-Oxford	54.9	54.7	55.0	55.3	1.9	2.9	1.8	3.3	3.5	5.3	3.3	5.9
Auburn-Opelika	66.7	66.3	67.0	66.6	2.1	3.0	2.0	3.0	3.1	4.5	3.0	4.5
Birmingham-Hoover	536.8	531.7	539.1	535.3	17.1	25.2	16.0	25.4	3.2	4.7	3.0	4.8
Decatur	73.5	72.7	73.6	73.0	2.3	3.7	2.1	3.6	3.2	5.1	2.9	5.0
Dothan	66.6	65.0	66.3	65.2	2.2	3.2	2.1	3.3	3.4	4.9	3.2	5.0
Florence-Muscle Shoals	69.3	69.0	69.2	69.3	2.7	3.6	2.4	3.7	3.9	5.3	3.5	5.3
Gadsden	45.6	44.8	45.6	45.0	1.8	2.6	1.7	2.6	4.0	5.7	3.7	5.8
Huntsville	203.0	204.3	203.9	205.5	5.5	8.0	5.1	8.0	2.7	3.9	2.5	3.9
Mobile	184.9	185.0	185.8	186.2	6.6	10.2	6.3	10.2	3.6	5.5	3.4	5.5
Montgomery	172.0	172.5	172.7	174.3	6.0	9.3	5.6	9.9	3.5	5.4	3.2	5.7
Tuscaloosa	99.3	98.3	99.2	98.8	3.0	4.4	2.7	4.3	3.0	4.5	2.8	4.4
Alaska	354.4	360.4	350.7	358.2	20.0	21.9	19.0	23.8	5.6	6.1	5.4	6.7
Anchorage	189.5	193.2	193.3	197.1	10.0	11.0	9.2	11.6	5.3	5.7	4.8	5.9
Fairbanks	45.5	45.8	45.6	46.5	2.2	2.4	2.0	2.8	4.7	5.3	4.3	5.9
Arizona	3,047.4	3,142.9	3,051.9	3,159.0	119.7	191.1	121.5	194.6	3.9	6.1	4.0	6.2
Flagstaff	71.8	74.5	71.1	74.2	2.4	3.8	2.5	3.9	3.4	5.1	3.5	5.2
Lake Havasu City-Kingman	92.0	94.2	92.3	94.5	4.4	6.9	4.6	7.4	4.8	7.4	5.0	7.9
Phoenix-Mesa-Scottsdale	2,061.9	2,124.9	2,065.0	2,140.2	68.4	114.6	71.1	117.3	3.3	5.4	3.4	5.5
Prescott	100.0	103.3	100.1	103.1	3.6	6.1	3.8	6.3	3.6	5.9	3.8	6.1
Tucson	457.3	472.3	461.6	475.3	17.2	27.0	18.0	27.6	3.8	5.7	3.9	5.8
Yuma	81.9	85.2	79.8	83.5	13.7	17.4	11.5	16.3	16.7	20.4	14.4	19.5
Arkansas	1,373.2	1,381.4	1,365.1	1,380.7	69.8	62.7	66.7	64.7	5.1	4.5	4.9	4.7
Fayetteville-Springdale-Rogers	229.0	232.1	228.1	232.6	8.8	8.1	8.2	8.2	3.9	3.5	3.6	3.5
Fort Smith	140.3	139.7	139.6	139.9	6.9	6.0	7.1	6.6	4.9	4.3	5.1	4.7
Hot Springs	42.6	45.0	42.4	44.6	2.3	2.1	2.1	2.1	5.5	4.7	5.1	4.8
Jonesboro	57.2	56.4	57.1	56.2	3.0	2.4	2.8	2.4	5.3	4.3	4.9	4.3
Little Rock-North Little Rock-Conway	339.2	345.6	337.7	343.5	15.3	13.9	14.2	14.0	4.5	4.0	4.2	4.1
Pine Bluff	44.7	44.7	44.6	44.8	3.1	2.9	2.9	3.0	6.9	6.4	6.6	6.7
California	18,262.0	18,485.3	18,277.9	18,605.2	985.5	1,389.5	986.6	1,486.3	5.4	7.5	5.4	8.0
Bakersfield	357.7	369.5	356.6	374.2	26.3	34.3	26.9	36.9	7.4	9.3	7.5	9.9
Chico	103.6	106.9	103.6	107.0	6.3	8.6	6.3	9.3	6.1	8.1	6.1	8.7
El Centro	70.4	77.1	70.9	78.4	14.6	21.1	14.7	21.7	20.7	27.4	20.8	27.6
Fresno	437.2	444.5	430.0	443.0	32.1	42.8	35.4	50.6	7.3	9.6	8.2	11.4
Hanford-Corcoran	59.4	60.8	58.7	61.4	4.2	5.6	4.7	6.7	7.1	9.2	8.0	10.9
Los Angeles-Long Beach-Santa Ana	6,582.3	6,579.1	6,594.1	6,626.0	326.3	480.0	318.0	509.6	5.0	7.3	4.8	7.7
Madera	66.6	67.4	64.3	65.6	4.2	5.6	4.4	6.4	6.3	8.4	6.9	9.7
Merced	103.0	107.1	102.4	108.1	8.5	11.6	8.6	12.6	8.3	10.8	8.4	11.7
Modesto	233.7	240.7	230.4	239.9	18.4	25.0	19.5	28.3	7.9	10.4	8.5	11.8
Napa	75.4	76.7	75.9	77.8	2.9	4.0	3.0	4.2	3.9	5.2	3.9	5.4
Oxnard-Thousand Oaks-Ventura	429.6	430.0	427.6	435.2	22.7	30.2	22.1	31.5	5.3	7.0	5.2	7.2
Redding	85.2	87.3	86.7	88.5	5.8	8.3	6.0	8.9	6.8	9.5	7.0	10.0
Riverside-San Bernardino-Ontario	1,788.8	1,829.9	1,794.9	1,843.3	113.1	167.2	113.6	175.1	6.3	9.1	6.3	9.5
Sacramento—Arden-Arcade—Roseville	1,055.3	1,074.1	1,057.8	1,082.4	56.9	79.6	57.8	85.3	5.4	7.4	5.5	7.9
Salinas	216.2	218.1	211.7	216.8	10.9	14.3	11.1	15.5	5.0	6.6	5.3	7.1
San Diego-Carlsbad-San Marcos	1,543.9	1,572.6	1,549.2	1,580.1	74.7	101.9	75.0	107.7	4.8	6.5	4.8	6.8
San Francisco-Oakland-Fremont	2,236.7	2,274.6	2,243.8	2,288.6	101.7	138.9	101.2	147.7	4.5	6.1	4.5	6.5
San Jose-Sunnyvale-Santa Clara	881.1	904.2	885.2	912.9	43.4	59.0	43.3	63.4	4.9	6.5	4.9	6.9
San Luis Obispo-Paso Robles	136.8	138.6	139.0	140.4	6.0	8.4	5.9	8.8	4.4	6.1	4.3	6.2
Santa Barbara-Santa Maria-Goleta	216.2	220.2	218.7	221.8	9.2	12.3	9.4	13.2	4.3	5.6	4.3	5.9
Santa Cruz-Watsonville	149.1	151.8	150.0	152.5	6.9	9.2	7.1	10.0	4.6	6.1	4.7	6.5
Santa Rosa-Petaluma	264.8	269.9	265.9	271.4	11.7	15.8	11.6	16.9	4.4	5.9	4.4	6.2
Stockton	298.2	304.9	296.4	305.6	22.7	30.9	23.4	33.9	7.6	10.1	7.9	11.1
Vallejo-Fairfield	213.0	215.0	212.3	216.6	11.6	15.7	11.5	16.7	5.4	7.3	5.4	7.7
Visalia-Porterville	196.8	197.4	192.4	198.9	15.9	20.9	16.5	23.4	8.1	10.6	8.6	11.8
Yuba City	71.3	69.9	69.7	70.5	5.6	7.8	5.9	8.8	7.9	11.1	8.5	12.5
Colorado	2,740.0	2,762.3	2,739.6	2,765.1	103.1	136.4	99.8	147.4	3.8	4.9	3.6	5.3
Boulder	178.2	179.3	179.1	180.6	5.9	7.6	5.7	8.2	3.3	4.2	3.2	4.5
Colorado Springs	318.6	315.6	316.9	315.7	13.8	18.4	13.4	19.8	4.3	5.8	4.2	6.3
Denver-Aurora	1,395.7	1,401.6	1,399.2	1,404.4	54.4	72.8	52.3	78.5	3.9	5.2	3.7	5.6
Fort Collins-Loveland	179.8	180.2	179.3	179.3	5.8	7.4	5.6	7.9	3.2	4.1	3.2	4.4
Grand Junction	80.6	83.3	80.7	83.6	2.5	3.2	2.4	3.4	3.1	3.8	3.0	4.0
Greeley	121.8	124.0	122.3	125.1	4.8	6.3	4.7	6.9	4.0	5.1	3.8	5.5
Pueblo	73.5	74.3	73.7	74.9	3.4	4.6	3.3	5.1	4.6	6.2	4.5	6.7
Connecticut	1,862.3	1,886.8	1,870.2	1,907.4	83.2	111.9	79.9	116.0	4.5	5.9	4.3	6.1
Bridgeport-Stamford-Norwalk	473.9	480.2	475.8	484.8	19.4	26.7	18.8	27.9	4.1	5.6	4.0	5.8
Danbury	91.7	92.5	92.1	94.3	3.2	4.3	3.1	4.6	3.5	4.7	3.3	4.8
Hartford-West Hartford-East Hartford	584.5	596.5	587.9	603.8	26.7	35.7	25.6	36.9	4.6	6.0	4.4	6.1
New Haven	310.4	313.1	312.2	317.3	14.8	19.3	14.2	20.1	4.8	6.2	4.5	6.3
Norwich-New London	151.9	152.9	151.4	152.8	6.3	9.1	6.0	9.3	4.1	6.0	4.0	6.1
Waterbury	100.9	102.6	101.3	103.9	5.8	7.8	5.6	8.2	5.8	7.6	5.5	7.9

See footnotes at end of table.

Table 1. Civilian labor force and unemployment by state and metropolitan area—Continued

(Numbers in thousands)

State and area	Civilian labor force				Unemployed							
					Number				Percent of labor force			
	September		October		September		October		September		October	
	2007	2008	2007	2008 ^P	2007	2008	2007	2008 ^P	2007	2008	2007	2008 ^P
Delaware	438.9	441.7	442.7	447.5	14.0	20.8	14.5	23.6	3.2	4.7	3.3	5.3
Dover	73.7	74.1	74.5	75.4	2.3	3.4	2.4	3.9	3.1	4.5	3.2	5.2
District of Columbia	325.4	331.6	325.1	329.8	19.3	23.6	17.8	24.7	5.9	7.1	5.5	7.5
Washington-Arlington-Alexandria	2,982.6	3,013.2	2,984.1	3,023.9	90.2	118.7	88.6	124.3	3.0	3.9	3.0	4.1
Florida	9,206.8	9,373.4	9,205.4	9,379.0	409.5	643.6	400.5	660.4	4.4	6.9	4.4	7.0
Bradenton-Sarasota-Venice	333.3	335.5	331.3	334.0	16.1	25.4	15.9	26.0	4.8	7.6	4.8	7.8
Cape Coral-Fort Myers	283.9	285.0	283.2	285.7	16.2	26.5	16.2	27.2	5.7	9.3	5.7	9.5
Deltona-Daytona Beach-Ormond Beach	251.7	257.4	251.6	257.8	11.2	18.6	11.1	19.4	4.5	7.2	4.4	7.5
Fort Walton Beach-Crestview-Destin	98.7	99.7	98.1	98.8	3.0	4.8	3.0	5.0	3.0	4.8	3.0	5.1
Gainesville	137.3	141.4	137.8	141.7	4.1	6.4	4.1	6.7	3.0	4.6	3.0	4.7
Jacksonville	674.4	688.4	675.3	686.9	27.3	44.1	26.9	45.5	4.1	6.4	4.0	6.6
Lakeland-Winter Haven	271.6	272.8	270.0	273.2	14.1	21.6	13.2	22.1	5.2	7.9	4.9	8.1
Miami-Fort Lauderdale-Pompano Beach	2,833.7	2,875.4	2,846.3	2,882.2	119.8	184.1	118.3	186.2	4.2	6.4	4.2	6.5
Naples-Marco Island	149.1	149.8	150.3	150.5	8.8	12.6	8.3	12.3	5.9	8.4	5.5	8.2
Ocala	136.5	140.8	136.9	141.2	6.9	12.1	6.8	12.6	5.0	8.6	5.0	8.9
Orlando-Kissimmee	1,107.1	1,133.5	1,104.7	1,136.8	45.9	73.6	44.5	77.4	4.1	6.5	4.0	6.8
Palm Bay-Melbourne-Titusville	263.9	269.8	263.6	269.5	12.4	19.8	12.1	20.6	4.7	7.3	4.6	7.6
Palm Coast	30.9	31.8	30.8	31.8	2.2	3.3	2.1	3.3	7.0	10.4	6.8	10.5
Panama City-Lynn Haven	87.7	87.9	87.3	88.0	3.2	5.0	3.2	5.5	3.7	5.6	3.6	6.3
Pensacola-Ferry Pass-Brent	212.7	216.9	212.0	215.7	8.2	13.1	8.1	13.4	3.9	6.1	3.8	6.2
Port St. Lucie	187.0	193.9	187.4	194.3	11.9	18.1	11.3	18.1	6.4	9.3	6.0	9.3
Punta Gorda	68.0	69.2	67.9	68.8	4.3	6.6	4.2	6.6	6.3	9.6	6.2	9.6
Sebastian-Vero Beach	60.4	61.5	60.2	61.4	4.4	6.2	4.0	5.9	7.3	10.1	6.6	9.6
Tallahassee	189.0	191.6	190.1	192.8	6.2	9.7	6.1	10.0	3.3	5.1	3.2	5.2
Tampa-St. Petersburg-Clearwater	1,352.2	1,365.1	1,343.9	1,366.9	61.1	96.7	60.1	100.9	4.5	7.1	4.5	7.4
Georgia	4,826.8	4,880.4	4,833.7	4,897.2	218.9	318.5	217.8	343.7	4.5	6.5	4.5	7.0
Albany	76.1	76.4	75.7	76.7	4.0	5.3	3.9	5.5	5.3	6.9	5.1	7.2
Athens-Clarke County	106.5	108.2	106.6	109.2	4.2	6.0	4.2	6.7	3.9	5.6	3.9	6.2
Atlanta-Sandy Springs-Marietta	2,736.7	2,768.6	2,744.0	2,773.6	120.7	177.7	119.4	189.2	4.4	6.4	4.4	6.8
Augusta-Richmond County	256.7	257.2	256.1	257.9	14.3	16.7	14.1	18.4	5.6	6.5	5.5	7.1
Brunswick	53.2	53.7	52.9	53.5	2.1	3.1	2.0	3.4	3.9	5.9	3.8	6.3
Columbus	128.4	129.7	128.6	129.6	6.7	8.8	6.6	9.6	5.2	6.8	5.1	7.4
Dalton	68.2	67.8	67.6	68.3	3.3	5.0	3.1	6.1	4.8	7.4	4.5	8.9
Gainesville	90.7	92.5	90.5	92.8	3.2	5.3	3.2	5.8	3.6	5.7	3.5	6.3
Hinesville-Fort Stewart	30.2	31.5	30.3	31.6	1.5	2.1	1.5	2.3	5.1	6.6	5.0	7.2
Macon	111.3	113.3	111.7	114.3	5.5	7.6	5.5	8.1	4.9	6.7	4.9	7.1
Rome	49.2	49.9	49.3	50.1	2.3	3.4	2.3	3.8	4.7	6.8	4.7	7.6
Savannah	178.6	181.5	179.0	181.5	6.9	10.3	6.7	10.9	3.9	5.7	3.8	6.0
Valdosta	68.4	68.3	68.4	68.9	2.8	4.1	2.7	4.6	4.0	6.0	4.0	6.6
Warner Robins	68.4	68.9	68.4	69.4	2.6	3.8	2.8	4.0	3.9	5.5	4.1	5.8
Hawaii	645.0	663.3	642.2	659.1	19.0	31.3	17.0	29.0	3.0	4.7	2.6	4.4
Honolulu	447.6	458.0	445.7	456.3	12.0	19.2	10.9	17.3	2.7	4.2	2.4	3.8
Idaho	756.3	758.1	758.1	761.6	15.1	32.4	15.7	35.4	2.0	4.3	2.1	4.7
Boise City-Nampa	293.7	291.4	294.5	291.4	6.3	14.0	6.7	15.6	2.2	4.8	2.3	5.4
Coeur d'Alene	70.5	70.6	70.2	71.1	1.4	3.3	1.5	3.6	2.0	4.6	2.1	5.1
Idaho Falls	62.2	63.9	63.3	63.8	0.9	2.1	0.9	2.0	1.5	3.3	1.4	3.1
Lewiston	29.0	28.2	28.6	28.5	0.8	1.3	0.8	1.4	2.6	4.5	2.8	5.0
Pocatello	44.4	43.6	44.4	44.2	0.9	1.8	0.9	1.9	2.0	4.1	2.1	4.3
Illinois	6,715.5	6,691.5	6,719.0	6,635.3	328.8	435.9	322.1	449.3	4.9	6.5	4.8	6.8
Bloomington-Normal	92.5	92.3	92.8	92.1	3.5	4.7	3.4	5.1	3.8	5.1	3.6	5.5
Champaign-Urbana	124.7	123.3	125.7	125.0	5.6	7.0	5.2	7.8	4.5	5.7	4.2	6.2
Chicago-Naperville-Joliet	4,896.1	4,900.7	4,894.6	4,841.7	231.8	308.0	222.9	309.5	4.7	6.3	4.6	6.4
Danville	38.4	38.4	38.5	38.5	2.4	3.2	2.3	3.4	6.4	8.4	6.1	8.9
Davenport-Moline-Rock Island	207.3	208.1	206.4	206.7	9.1	10.6	8.8	11.3	4.4	5.1	4.3	5.5
Decatur	55.7	55.6	56.0	55.6	3.2	4.1	3.1	4.3	5.7	7.3	5.5	7.8
Kankakee-Bradley	56.3	56.9	56.5	57.1	3.5	4.8	3.4	5.4	6.2	8.5	6.0	9.4
Peoria	205.7	206.8	206.7	205.9	9.1	11.7	8.9	12.1	4.4	5.7	4.3	5.9
Rockford	178.3	178.9	180.4	179.5	10.3	15.7	15.0	17.5	5.8	8.8	8.3	9.7
Springfield	115.8	115.6	116.0	115.4	5.3	7.1	5.0	7.4	4.6	6.1	4.3	6.4
Indiana	3,204.5	3,249.6	3,208.7	3,253.1	132.4	189.2	131.0	195.0	4.1	5.8	4.1	6.0
Anderson	60.2	60.6	60.0	60.5	3.4	4.0	3.2	4.1	5.6	6.7	5.4	6.9
Bloomington	96.7	98.1	97.5	99.3	3.3	4.4	3.3	5.0	3.4	4.5	3.4	5.0
Columbus	38.2	39.1	38.4	39.1	1.2	1.8	1.2	1.8	3.2	4.5	3.2	4.6
Elkhart-Goshen	101.2	102.7	101.2	103.8	4.3	9.5	4.4	11.1	4.2	9.3	4.4	10.7
Evansville	181.5	182.5	181.3	182.6	7.6	9.3	7.5	9.5	4.2	5.1	4.1	5.2
Fort Wayne	212.2	214.9	212.3	213.7	9.3	12.4	9.2	12.6	4.4	5.7	4.3	5.9
Indianapolis-Carmel	894.4	910.1	895.7	912.0	33.3	46.5	33.5	47.6	3.7	5.1	3.7	5.2
Kokomo	45.4	44.7	44.6	44.4	2.8	3.4	2.0	3.3	6.1	7.6	4.6	7.5
Lafayette	96.0	97.1	96.2	97.4	3.4	4.5	3.3	4.5	3.5	4.7	3.5	4.6
Michigan City-La Porte	52.4	53.2	52.6	53.2	2.3	3.0	2.3	3.2	4.4	5.6	4.4	6.0
Muncie	55.8	56.4	55.8	56.3	2.6	3.7	2.5	3.6	4.6	6.6	4.5	6.5
South Bend-Mishawaka	160.6	160.2	161.5	161.8	7.3	10.8	7.2	11.7	4.6	6.8	4.5	7.2

See footnotes at end of table.

Table 1. Civilian labor force and unemployment by state and metropolitan area—Continued

(Numbers in thousands)

State and area	Civilian labor force				Unemployed							
					Number				Percent of labor force			
	September		October		September		October		September		October	
	2007	2008	2007	2008 ^P	2007	2008	2007	2008 ^P	2007	2008	2007	2008 ^P
Indiana—Continued												
Terre Haute	79.5	79.5	79.4	79.5	3.7	5.0	3.6	5.0	4.7	6.3	4.6	6.2
Iowa	1,665.0	1,684.1	1,669.8	1,690.2	59.2	65.1	55.8	66.5	3.6	3.9	3.3	3.9
Ames	48.6	49.0	49.1	48.7	1.3	1.3	1.2	1.3	2.7	2.7	2.5	2.7
Cedar Rapids	142.5	145.6	142.5	146.0	5.3	5.8	4.9	5.5	3.7	3.9	3.4	3.8
Des Moines-West Des Moines	310.4	315.4	309.1	313.2	10.7	11.6	9.9	11.9	3.4	3.7	3.2	3.8
Dubuque	52.2	51.8	52.0	52.0	1.9	1.9	1.8	2.1	3.6	3.7	3.5	4.0
Iowa City	90.3	91.2	91.0	91.0	2.5	2.6	2.5	2.7	2.8	2.8	2.7	2.9
Sioux City	76.5	76.0	76.6	76.3	2.6	2.7	2.5	2.7	3.4	3.5	3.3	3.5
Waterloo-Cedar Falls	94.3	95.6	94.3	96.1	3.3	3.5	3.0	3.6	3.5	3.7	3.2	3.7
Kansas	1,475.5	1,495.8	1,474.9	1,497.6	58.6	71.9	52.6	67.0	4.0	4.8	3.6	4.5
Lawrence	62.5	62.9	63.0	62.3	2.1	2.6	1.9	2.4	3.4	4.2	3.1	3.8
Topeka	119.7	121.7	119.7	122.5	5.3	6.6	4.7	6.5	4.4	5.5	4.0	5.3
Wichita	311.8	315.6	313.7	318.8	12.2	14.8	10.8	14.0	3.9	4.7	3.5	4.4
Kentucky	2,043.9	2,045.4	2,029.6	2,033.8	103.6	136.8	96.7	127.0	5.1	6.7	4.8	6.2
Bowling Green	63.9	64.6	63.5	63.9	2.7	3.5	2.3	3.3	4.3	5.4	3.6	5.2
Elizabethtown	54.8	53.6	54.6	53.5	2.6	3.6	2.4	3.5	4.8	6.7	4.5	6.5
Lexington-Fayette	236.8	237.3	235.8	237.2	9.7	12.8	8.3	11.8	4.1	5.4	3.5	5.0
Louisville-Jefferson County	629.3	633.2	628.7	626.1	29.0	44.2	30.7	40.2	4.6	7.0	4.9	6.4
Owensboro	56.7	55.8	56.0	55.4	2.7	3.5	2.3	3.3	4.8	6.3	4.1	6.0
Louisiana	2,001.7	2,052.8	2,010.4	2,070.8	77.6	107.3	66.5	108.7	3.9	5.2	3.3	5.3
Alexandria	68.0	68.0	67.9	69.2	2.6	3.0	2.2	3.5	3.9	4.4	3.2	5.0
Baton Rouge	363.7	373.6	366.6	376.3	14.0	20.2	12.1	19.4	3.9	5.4	3.3	5.1
Houma-Bayou Cane-Thibodaux	101.9	104.7	102.6	103.8	2.8	6.1	2.4	4.1	2.7	5.9	2.3	4.0
Lafayette	131.6	134.3	132.3	136.0	3.8	4.4	3.2	5.1	2.9	3.3	2.4	3.7
Lake Charles	92.8	94.0	93.2	95.1	3.6	4.2	3.0	4.6	3.9	4.4	3.2	4.8
Monroe	80.9	80.9	80.8	81.6	3.7	4.2	3.2	4.6	4.5	5.1	3.9	5.7
New Orleans-Metairie-Kenner	505.2	527.9	510.9	532.9	17.9	28.2	15.4	27.7	3.5	5.3	3.0	5.2
Shreveport-Bossier City	179.9	184.4	180.0	186.0	8.0	9.5	7.0	11.1	4.5	5.1	3.9	6.0
Maine	705.0	710.7	707.2	712.8	30.2	35.2	31.1	36.9	4.3	5.0	4.4	5.2
Bangor	70.1	71.4	71.5	73.1	3.1	3.6	3.2	3.8	4.4	5.1	4.4	5.1
Lewiston-Auburn	57.1	57.7	57.8	58.3	2.6	3.0	2.5	3.2	4.5	5.3	4.4	5.5
Portland-South Portland-Biddeford	205.2	206.8	206.6	207.0	7.1	8.2	7.4	8.7	3.5	4.0	3.6	4.2
Maryland	2,979.0	2,990.7	2,986.2	3,004.5	102.7	132.0	102.9	146.2	3.4	4.4	3.4	4.9
Baltimore-Towson	1,396.6	1,399.9	1,402.1	1,410.0	50.5	65.3	50.7	72.5	3.6	4.7	3.6	5.1
Cumberland	48.4	48.9	48.6	49.3	2.1	2.4	2.1	2.7	4.4	4.9	4.3	5.4
Hagerstown-Martinsburg	120.6	121.7	120.3	122.2	4.9	6.1	4.9	6.9	4.1	5.0	4.0	5.7
Salisbury	63.8	65.0	62.9	64.2	2.4	3.4	2.5	4.0	3.8	5.2	3.9	6.2
Massachusetts	3,393.3	3,396.4	3,389.1	3,411.8	148.7	180.5	130.7	170.1	4.4	5.3	3.9	5.0
Barnstable Town	137.4	137.0	132.2	132.7	5.5	6.8	4.8	6.6	4.0	5.0	3.6	5.0
Boston-Cambridge-Quincy	2,469.5	2,483.3	2,473.9	2,498.0	101.4	123.5	89.5	114.9	4.1	5.0	3.6	4.6
Leominster-Fitchburg-Gardner	71.4	70.9	71.3	71.6	3.9	4.8	3.4	4.6	5.5	6.7	4.8	6.4
New Bedford	83.6	83.3	83.4	83.7	4.8	6.2	4.4	6.1	5.7	7.5	5.3	7.3
Pittsfield	38.5	38.5	38.4	38.7	1.5	1.9	1.3	1.7	4.0	4.9	3.5	4.4
Springfield	341.2	340.2	341.8	342.6	16.8	19.8	15.0	19.1	4.9	5.8	4.4	5.6
Worcester	288.7	286.0	288.3	287.9	13.7	16.5	12.0	15.4	4.8	5.8	4.2	5.4
Michigan	5,008.6	4,920.4	4,998.0	4,932.3	348.0	407.2	336.7	422.6	6.9	8.3	6.7	8.6
Ann Arbor	188.2	182.8	189.1	184.3	9.3	11.8	8.4	11.3	4.9	6.5	4.4	6.1
Battle Creek	69.2	67.1	68.9	67.2	4.6	5.5	4.3	5.5	6.7	8.2	6.2	8.2
Bay City	54.9	53.5	54.5	53.5	3.4	4.2	3.1	4.2	6.3	7.8	5.7	7.8
Detroit-Warren-Livonia	2,138.1	2,122.9	2,138.9	2,127.0	166.4	176.0	166.8	187.0	7.8	8.3	7.8	8.8
Flint	205.1	194.9	204.7	196.2	16.4	21.2	15.3	21.3	8.0	10.9	7.5	10.9
Grand Rapids-Wyoming	411.6	403.8	410.1	407.0	23.8	30.1	21.8	30.6	5.8	7.5	5.3	7.5
Holland-Grand Haven	137.1	133.0	136.3	133.5	7.5	9.6	7.0	10.0	5.5	7.3	5.2	7.5
Jackson	76.6	74.5	76.3	75.2	5.7	6.9	5.2	7.1	7.4	9.3	6.8	9.4
Kalamazoo-Portage	176.6	172.8	176.3	173.5	9.6	12.5	8.6	12.3	5.4	7.2	4.9	7.1
Lansing-East Lansing	248.9	241.3	249.7	243.4	14.0	17.2	12.5	17.6	5.6	7.1	5.0	7.2
Monroe	76.6	75.2	77.9	75.4	4.7	7.1	6.0	6.9	6.1	9.5	7.7	9.1
Muskegon-Norton Shores	90.5	89.0	89.7	88.8	6.4	8.3	6.0	8.7	7.1	9.3	6.7	9.8
Niles-Benton Harbor	81.1	80.2	80.8	80.1	5.1	6.8	4.8	6.7	6.3	8.5	6.0	8.4
Saginaw-Saginaw Township North	96.0	92.5	96.1	93.2	6.6	8.2	6.0	8.2	6.9	8.9	6.2	8.8
Minnesota	2,936.3	2,942.2	2,930.6	2,945.7	133.4	168.1	116.2	155.8	4.5	5.7	4.0	5.3
Duluth	145.8	145.3	145.9	146.0	7.5	9.0	6.7	8.7	5.1	6.2	4.6	5.9
Minneapolis-St. Paul-Bloomington	1,852.4	1,847.1	1,848.8	1,848.4	83.7	105.0	72.5	97.5	4.5	5.7	3.9	5.3
Rochester	105.0	105.0	104.2	105.0	4.1	4.9	3.5	4.6	3.9	4.7	3.4	4.4
St. Cloud	106.7	107.1	107.9	108.6	4.6	6.0	3.9	5.6	4.3	5.6	3.7	5.1
Mississippi	1,314.9	1,320.1	1,319.3	1,314.9	79.8	99.0	79.7	90.4	6.1	7.5	6.0	6.9
Gulfport-Biloxi	112.9	112.7	113.3	111.9	5.7	7.0	5.8	6.4	5.0	6.2	5.1	5.7
Hattiesburg	66.7	65.5	67.0	65.3	3.2	4.2	3.4	3.7	4.9	6.4	5.0	5.7

See footnotes at end of table.

Table 1. Civilian labor force and unemployment by state and metropolitan area—Continued

(Numbers in thousands)

State and area	Civilian labor force				Unemployed							
					Number				Percent of labor force			
	September		October		September		October		September		October	
	2007	2008	2007	2008 ^P	2007	2008	2007	2008 ^P	2007	2008	2007	2008 ^P
Mississippi—Continued												
Jackson	259.1	260.1	261.5	258.9	13.2	16.2	13.3	15.0	5.1	6.2	5.1	5.8
Pascagoula	69.3	70.9	69.7	70.2	3.8	5.1	3.9	4.4	5.5	7.2	5.6	6.3
Missouri	3,025.8	2,992.4	3,030.6	3,021.5	155.8	187.0	154.4	184.7	5.1	6.2	5.1	6.1
Columbia	92.5	91.8	94.1	93.3	3.6	4.1	3.5	3.9	3.9	4.5	3.7	4.1
Jefferson City	77.1	75.9	77.6	76.8	3.2	3.9	3.2	3.7	4.2	5.1	4.1	4.9
Joplin	84.2	83.7	84.2	84.5	4.0	4.5	3.8	4.4	4.7	5.4	4.6	5.2
Kansas City	1,037.6	1,037.3	1,043.9	1,043.5	52.7	63.9	52.4	61.6	5.1	6.2	5.0	5.9
St. Joseph	67.6	66.9	68.2	67.8	3.0	3.6	3.0	3.5	4.4	5.3	4.3	5.2
St. Louis ¹	1,447.3	1,429.4	1,448.8	1,434.6	78.2	97.0	76.6	98.4	5.4	6.8	5.3	6.9
Springfield	221.3	220.0	221.2	220.9	9.6	11.7	9.3	11.9	4.3	5.3	4.2	5.4
Montana	500.5	505.6	499.7	506.0	12.0	19.3	13.3	21.6	2.4	3.8	2.7	4.3
Billings	86.0	86.2	86.6	87.4	1.7	2.7	1.8	2.8	1.9	3.2	2.1	3.2
Great Falls	39.2	39.8	39.4	40.5	1.0	1.5	1.1	1.6	2.5	3.7	2.7	3.9
Missoula	58.3	58.0	58.4	59.2	1.4	2.2	1.5	2.4	2.4	3.9	2.6	4.1
Nebraska	979.3	991.0	985.4	998.0	27.1	31.5	26.8	31.9	2.8	3.2	2.7	3.2
Lincoln	167.2	168.5	169.3	170.9	4.3	5.1	4.3	4.9	2.6	3.0	2.6	2.9
Omaha-Council Bluffs	446.1	450.0	448.5	453.3	14.0	15.8	13.7	15.8	3.1	3.5	3.1	3.5
Nevada	1,346.3	1,411.1	1,348.4	1,416.9	66.8	101.4	66.3	105.3	5.0	7.2	4.9	7.4
Carson City	28.7	30.0	28.8	29.8	1.4	2.2	1.4	2.2	5.0	7.3	4.9	7.4
Las Vegas-Paradise	958.1	1,005.8	960.7	1,012.8	48.7	73.5	48.4	76.4	5.1	7.3	5.0	7.5
Reno-Sparks	229.3	236.2	228.7	235.5	10.2	16.2	10.1	16.9	4.5	6.8	4.4	7.2
New Hampshire	735.4	742.1	735.6	741.6	23.2	28.8	22.1	27.8	3.2	3.9	3.0	3.7
Manchester	106.9	107.5	107.3	108.0	3.3	4.4	3.2	4.1	3.1	4.1	2.9	3.8
Portsmouth	44.9	45.4	44.7	45.3	1.4	1.6	1.3	1.6	3.1	3.6	2.9	3.5
Rochester-Dover	82.0	83.7	83.1	84.6	2.6	3.1	2.5	3.1	3.1	3.7	3.0	3.7
New Jersey	4,441.6	4,512.0	4,447.1	4,539.5	180.6	251.9	169.9	255.3	4.1	5.6	3.8	5.6
Atlantic City-Hammonton	136.1	138.6	133.4	136.7	7.3	9.5	7.0	10.0	5.4	6.9	5.2	7.3
Ocean City	60.6	61.9	54.1	55.4	2.5	3.4	2.7	4.2	4.1	5.5	5.0	7.6
Trenton-Ewing	194.7	197.4	195.8	199.0	7.2	10.0	6.7	9.9	3.7	5.1	3.4	5.0
Vineland-Millville-Bridgeton	67.8	69.6	67.7	69.9	4.0	5.6	3.7	5.8	5.8	8.0	5.5	8.3
New Mexico	943.6	956.6	946.2	964.4	31.2	36.7	29.0	39.3	3.3	3.8	3.1	4.1
Albuquerque	405.8	409.4	406.6	412.6	13.9	16.7	13.0	18.1	3.4	4.1	3.2	4.4
Farmington	57.1	58.3	57.5	58.7	1.7	2.0	1.5	2.0	2.9	3.4	2.6	3.5
Las Cruces	87.8	90.1	88.6	91.5	3.0	3.4	2.8	3.7	3.4	3.8	3.2	4.1
Santa Fe	79.5	79.9	78.8	79.8	2.1	2.6	2.0	2.8	2.7	3.3	2.5	3.5
New York	9,481.9	9,597.2	9,506.2	9,638.9	423.4	541.0	417.5	525.4	4.5	5.6	4.4	5.5
Albany-Schenectady-Troy	450.4	454.5	451.3	456.1	17.3	23.5	16.4	22.1	3.8	5.2	3.6	4.9
Binghamton	122.4	123.3	122.8	124.0	5.0	7.0	4.8	6.6	4.1	5.6	3.9	5.3
Buffalo-Niagara Falls	574.3	581.6	574.6	582.1	25.6	35.2	24.5	32.9	4.5	6.1	4.3	5.7
Elmira	41.0	41.2	41.0	41.4	1.8	2.4	1.7	2.3	4.3	5.9	4.1	5.6
Glens Falls	67.3	68.1	66.4	67.4	2.5	3.7	2.4	3.5	3.7	5.4	3.6	5.2
Ithaca	55.8	56.1	56.1	56.6	1.9	2.5	1.8	2.4	3.3	4.5	3.1	4.2
Kingston	90.8	91.5	91.0	91.7	3.9	5.4	3.7	4.9	4.3	5.9	4.0	5.3
New York-Northern New Jersey-Long Island ...	9,281.9	9,413.6	9,312.8	9,470.7	408.0	521.0	400.3	516.9	4.4	5.5	4.3	5.5
New York City	3,841.6	3,896.4	3,859.9	3,921.4	193.8	223.5	201.2	225.0	5.0	5.7	5.2	5.7
Poughkeepsie-Newburgh-Middletown	322.1	326.2	323.3	328.6	13.4	18.7	12.6	17.7	4.2	5.7	3.9	5.4
Rochester	524.9	527.1	526.3	529.8	22.6	31.2	21.5	29.2	4.3	5.9	4.1	5.5
Syracuse	327.7	332.1	327.7	333.0	13.5	19.4	12.6	18.6	4.1	5.8	3.9	5.6
Utica-Rome	139.6	140.7	140.3	141.8	5.5	7.9	5.3	7.4	4.0	5.6	3.8	5.2
North Carolina	4,529.0	4,572.0	4,531.9	4,593.8	198.0	300.2	202.6	308.5	4.4	6.6	4.5	6.7
Asheville	207.0	207.7	207.6	207.7	6.9	10.8	7.3	10.8	3.3	5.2	3.5	5.2
Burlington	69.7	69.7	69.5	70.2	3.2	5.0	3.3	5.1	4.6	7.1	4.7	7.2
Charlotte-Gastonia-Concord	840.3	853.7	842.6	861.7	38.6	58.6	39.1	61.1	4.6	6.9	4.6	7.1
Durham	256.4	256.8	255.3	257.5	9.3	13.4	9.4	13.0	3.6	5.2	3.7	5.1
Fayetteville	146.7	147.6	147.4	148.8	7.2	10.0	7.4	9.8	4.9	6.8	5.0	6.6
Goldensboro	52.2	53.5	52.1	53.2	2.3	3.3	2.3	3.4	4.4	6.3	4.4	6.4
Greensboro-High Point	363.1	364.2	362.6	368.8	16.5	25.0	16.8	25.7	4.5	6.9	4.6	7.0
Greenville	87.8	88.8	88.0	89.5	4.1	6.2	4.1	6.4	4.7	7.0	4.7	7.2
Hickory-Lenoir-Morganton	171.9	170.9	172.0	172.2	9.4	13.9	9.7	14.5	5.5	8.1	5.7	8.4
Jacksonville	59.4	61.9	60.0	62.0	2.4	3.6	2.5	3.6	4.0	5.8	4.2	5.8
Raleigh-Cary	544.4	549.9	544.3	555.1	18.6	29.0	18.8	29.0	3.4	5.3	3.5	5.2
Rocky Mount	69.0	70.4	69.2	70.7	3.9	6.7	4.1	6.8	5.7	9.6	5.9	9.6
Wilmington	176.6	178.7	174.9	178.2	6.6	10.7	6.7	11.0	3.7	6.0	3.8	6.2
Winston-Salem	234.7	238.4	235.4	240.8	10.0	15.1	10.2	15.5	4.3	6.3	4.4	6.4
North Dakota	367.7	374.5	366.5	371.9	9.3	10.7	8.4	9.2	2.5	2.8	2.3	2.5
Bismarck	61.9	63.6	62.3	63.6	1.4	1.6	1.3	1.4	2.2	2.5	2.0	2.2
Fargo	119.9	121.6	120.3	121.8	2.9	3.4	2.5	3.0	2.4	2.8	2.1	2.5
Grand Forks	56.5	57.7	57.1	57.9	1.6	1.9	1.4	1.6	2.8	3.4	2.4	2.8

See footnotes at end of table.

Table 1. Civilian labor force and unemployment by state and metropolitan area—Continued

(Numbers in thousands)

State and area	Civilian labor force				Unemployed							
					Number				Percent of labor force			
	September		October		September		October		September		October	
	2007	2008	2007	2008 ^P	2007	2008	2007	2008 ^P	2007	2008	2007	2008 ^P
Ohio	5,983.3	5,998.2	5,993.7	6,005.5	328.6	415.7	318.2	408.1	5.5	6.9	5.3	6.8
Akron	389.5	391.3	389.6	391.1	20.3	25.7	19.4	25.1	5.2	6.6	5.0	6.4
Canton-Massillon	205.0	206.7	205.3	206.8	11.7	14.8	11.2	14.7	5.7	7.2	5.5	7.1
Cincinnati-Middletown	1,123.2	1,128.7	1,122.2	1,127.5	55.7	70.8	52.2	68.9	5.0	6.3	4.7	6.1
Cleveland-Elyria-Mentor	1,095.3	1,084.0	1,090.8	1,075.8	64.5	75.1	59.3	67.6	5.9	6.9	5.4	6.3
Columbus	959.0	972.0	966.2	977.8	46.3	58.9	44.1	58.0	4.8	6.1	4.6	5.9
Dayton	426.9	427.6	427.8	429.3	24.6	32.0	24.0	32.5	5.8	7.5	5.6	7.6
Lima	52.0	52.5	51.9	52.2	3.2	4.1	3.1	4.0	6.1	7.8	5.9	7.6
Mansfield	61.7	61.9	61.9	61.9	3.9	5.0	3.8	4.7	6.3	8.1	6.1	7.7
Sandusky	43.1	43.6	42.6	42.9	2.3	3.5	2.4	3.2	5.3	8.0	5.6	7.4
Springfield	70.8	70.4	71.0	70.8	4.1	5.0	4.5	5.0	5.8	7.1	6.3	7.0
Toledo	341.6	339.0	343.4	342.2	20.0	26.5	23.6	29.2	5.9	7.8	6.9	8.5
Weirton-Steubenville	57.2	56.6	57.4	57.0	3.2	3.6	3.2	4.3	5.7	6.4	5.6	7.6
Youngstown-Warren-Boardman	278.1	284.2	278.4	283.7	16.5	21.4	15.9	21.3	5.9	7.5	5.7	7.5
Oklahoma	1,729.0	1,753.0	1,737.9	1,774.6	70.3	62.0	72.5	73.5	4.1	3.5	4.2	4.1
Lawton	46.3	45.9	46.6	46.9	1.9	1.6	2.0	1.9	4.0	3.4	4.2	4.1
Oklahoma City	570.3	568.6	574.9	576.3	23.0	19.9	23.8	24.4	4.0	3.5	4.1	4.2
Tulsa	444.4	434.6	446.5	443.2	17.5	15.6	18.1	18.5	3.9	3.6	4.1	4.2
Oregon	1,936.9	1,962.8	1,939.1	1,974.8	92.1	113.4	93.6	134.1	4.8	5.8	4.8	6.8
Bend	83.7	86.7	82.7	86.5	3.8	5.8	4.0	7.0	4.5	6.7	4.9	8.1
Corvallis	41.7	42.0	42.8	43.5	1.6	1.7	1.6	2.2	3.9	4.1	3.8	5.0
Eugene-Springfield	178.1	181.1	181.4	185.1	8.7	12.0	8.8	13.8	4.9	6.6	4.9	7.5
Medford	104.1	105.5	104.5	106.7	5.2	7.0	5.2	8.1	5.0	6.7	5.0	7.6
Portland-Vancouver-Beaverton	1,147.9	1,166.2	1,154.5	1,177.2	53.1	64.3	52.6	75.8	4.6	5.5	4.6	6.4
Salem	195.0	196.9	192.2	196.2	9.1	10.7	9.3	13.0	4.7	5.5	4.8	6.6
Pennsylvania	6,281.9	6,430.1	6,290.1	6,445.4	254.6	337.3	255.0	347.3	4.1	5.2	4.1	5.4
Allentown-Bethlehem-Easton	414.4	418.8	412.0	420.0	16.8	23.2	16.7	23.6	4.1	5.5	4.0	5.6
Altoona	64.5	65.8	64.6	65.9	2.4	3.3	2.4	3.5	3.8	5.0	3.8	5.3
Erie	139.5	141.2	139.4	141.4	6.1	7.3	6.1	7.5	4.3	5.2	4.4	5.3
Harrisburg-Carlisle	281.0	287.1	280.9	286.9	9.4	13.1	9.5	13.7	3.3	4.6	3.4	4.8
Johnstown	67.4	68.1	67.5	68.2	3.3	3.9	3.2	4.1	4.9	5.8	4.8	6.0
Lancaster	267.6	277.5	267.4	276.0	8.4	11.5	8.4	12.0	3.2	4.1	3.1	4.3
Lebanon	71.7	74.2	71.9	73.9	2.3	3.0	2.3	3.2	3.1	4.0	3.2	4.3
Philadelphia-Camden-Wilmington	2,934.4	2,979.4	2,953.2	3,008.3	122.5	165.1	121.0	169.8	4.2	5.5	4.1	5.6
Pittsburgh	1,199.1	1,221.9	1,198.7	1,226.7	47.3	60.1	47.0	60.8	3.9	4.9	3.9	5.0
Reading	199.9	204.6	200.6	205.0	7.9	10.9	8.1	11.6	3.9	5.3	4.0	5.6
Scranton—Wilkes-Barre	276.9	282.8	277.5	284.4	12.2	16.6	12.2	17.5	4.4	5.9	4.4	6.2
State College	73.4	76.8	75.2	77.6	2.2	3.1	2.3	3.1	3.0	4.0	3.1	4.0
Williamsport	58.4	60.0	58.8	59.9	2.5	3.3	2.5	3.5	4.3	5.5	4.3	5.8
York-Hanover	224.6	228.9	224.3	228.7	7.7	11.0	7.8	11.3	3.4	4.8	3.5	4.9
Rhode Island	577.4	572.5	576.1	569.8	26.4	47.4	26.4	50.0	4.6	8.3	4.6	8.8
Providence-Fall River-Warwick	710.2	703.2	709.0	701.9	34.0	56.6	32.9	59.0	4.8	8.0	4.6	8.4
South Carolina	2,137.9	2,152.4	2,138.0	2,170.1	127.1	157.7	127.1	173.2	5.9	7.3	5.9	8.0
Anderson	85.2	84.9	84.7	85.9	5.2	6.0	5.2	6.8	6.1	7.1	6.1	7.9
Charleston-North Charleston-Summerville	313.2	315.6	312.8	318.1	15.1	18.9	15.0	20.7	4.8	6.0	4.8	6.5
Columbia	369.5	368.9	370.4	372.2	19.9	23.5	19.8	25.9	5.4	6.4	5.3	6.9
Florence	95.5	96.9	95.1	97.1	6.1	7.7	6.1	8.4	6.4	8.0	6.4	8.7
Greenville-Mauldin-Easley	315.1	319.6	315.2	321.7	17.0	19.8	17.0	22.0	5.4	6.2	5.4	6.9
Myrtle Beach-North Myrtle Beach-Conway	133.1	132.6	130.8	132.3	6.5	9.2	6.9	11.1	4.9	6.9	5.3	8.4
Spartanburg	132.1	136.2	132.7	137.1	7.9	9.9	8.2	11.0	6.0	7.3	6.1	8.0
Sumter	45.3	44.0	45.1	45.1	3.3	3.9	3.4	4.3	7.3	8.8	7.6	9.5
South Dakota	443.4	446.4	444.0	447.7	11.8	12.7	11.0	12.6	2.7	2.8	2.5	2.8
Rapid City	67.1	67.3	66.9	67.5	1.8	1.9	1.7	1.9	2.7	2.9	2.6	2.9
Sioux Falls	127.8	129.0	128.7	130.4	3.0	3.3	2.7	3.3	2.3	2.5	2.1	2.5
Tennessee	3,056.6	3,052.6	3,061.0	3,061.4	144.6	211.3	143.6	204.9	4.7	6.9	4.7	6.7
Chattanooga	264.1	265.3	266.0	266.4	10.8	15.9	11.1	15.9	4.1	6.0	4.2	6.0
Clarksville	110.6	110.2	109.6	109.0	5.8	8.1	5.6	7.3	5.2	7.4	5.1	6.7
Cleveland	55.2	55.1	55.0	55.5	2.6	3.8	2.5	3.6	4.7	6.8	4.5	6.5
Jackson	56.6	56.7	56.5	56.9	2.8	4.0	2.7	3.8	4.9	7.1	4.8	6.7
Johnson City	99.6	99.9	100.2	100.7	4.4	6.3	4.4	5.9	4.4	6.3	4.4	5.9
Kingsport-Bristol-Bristol	144.6	146.1	145.3	146.7	6.0	8.6	6.8	8.3	4.2	5.9	4.7	5.7
Knoxville	359.8	359.2	361.1	360.4	13.1	20.2	13.5	19.2	3.6	5.6	3.7	5.3
Memphis	622.0	619.3	624.6	619.3	32.5	45.0	32.4	43.2	5.2	7.3	5.2	7.0
Morristown	64.4	64.2	64.8	64.7	3.1	4.8	3.1	4.7	4.8	7.4	4.8	7.3
Nashville-Davidson—Murfreesboro—Franklin	797.1	797.8	799.0	800.8	31.9	48.2	31.9	46.5	4.0	6.0	4.0	5.8
Texas	11,542.1	11,797.3	11,533.3	11,831.1	502.0	616.1	465.6	636.8	4.3	5.2	4.0	5.4
Abilene	80.6	81.3	80.0	81.1	3.0	3.4	2.8	3.4	3.7	4.2	3.5	4.2
Amarillo	128.6	129.4	128.1	129.5	4.4	5.0	4.1	5.0	3.5	3.9	3.2	3.9
Austin-Round Rock	853.7	866.7	851.4	870.0	31.8	40.4	29.6	41.5	3.7	4.7	3.5	4.8
Beaumont-Port Arthur	179.6	182.4	179.5	184.6	9.8	13.0	9.1	15.1	5.5	7.1	5.1	8.2
Brownsville-Harlingen	141.6	145.6	140.9	145.8	8.3	10.9	7.6	10.8	5.9	7.5	5.4	7.4

See footnotes at end of table.

Table 1. Civilian labor force and unemployment by state and metropolitan area—Continued

(Numbers in thousands)

State and area	Civilian labor force				Unemployed							
	September		October		Number				Percent of labor force			
	2007	2008	2007	2008 ^P	2007	2008	2007	2008 ^P	2007	2008	2007	2008 ^P
Texas—Continued												
College Station-Bryan	103.3	106.3	104.3	107.5	3.9	4.5	3.5	4.5	3.7	4.2	3.4	4.2
Corpus Christi	198.1	201.6	197.6	201.3	8.8	10.5	8.1	10.5	4.4	5.2	4.1	5.2
Dallas-Fort Worth-Arlington	3,116.7	3,164.8	3,115.5	3,180.6	134.5	167.1	126.0	173.6	4.3	5.3	4.0	5.5
El Paso	294.3	300.8	294.2	301.9	16.9	19.8	15.7	20.1	5.8	6.6	5.3	6.7
Houston-Sugar Land-Baytown	2,751.1	2,807.7	2,756.5	2,825.8	118.5	144.2	109.2	152.3	4.3	5.1	4.0	5.4
Killeen-Temple-Fort Hood	152.3	154.7	152.2	155.5	7.0	8.3	6.6	8.4	4.6	5.4	4.4	5.4
Laredo	87.9	91.0	88.2	91.3	4.1	5.1	3.8	5.2	4.6	5.6	4.3	5.6
Longview	106.2	108.7	106.5	108.9	4.2	4.8	3.9	4.9	4.0	4.4	3.6	4.5
Lubbock	138.9	140.0	138.8	140.5	5.0	5.6	4.6	5.5	3.6	4.0	3.3	3.9
McAllen-Edinburg-Mission	268.9	283.6	269.2	284.2	16.8	22.5	15.2	21.9	6.3	7.9	5.7	7.7
Midland	72.3	72.8	71.9	72.8	2.1	2.4	2.0	2.3	3.0	3.2	2.7	3.1
Odessa	67.5	69.0	68.0	69.2	2.3	2.6	2.1	2.6	3.4	3.8	3.1	3.7
San Angelo	52.5	52.5	52.3	52.1	1.9	2.3	1.9	2.3	3.7	4.4	3.5	4.5
San Antonio	929.6	951.4	928.5	953.0	38.3	47.6	35.3	48.8	4.1	5.0	3.8	5.1
Sherman-Denison	55.9	57.7	56.0	57.9	2.7	3.1	2.6	3.1	4.7	5.3	4.6	5.4
Texarkana	61.9	64.1	62.1	63.8	2.9	3.0	2.8	3.0	4.6	4.7	4.4	4.7
Tyler	96.6	98.1	97.0	99.7	4.0	4.9	3.9	6.4	4.2	5.0	4.0	6.5
Victoria	57.7	57.9	57.4	57.9	2.2	2.5	2.0	2.6	3.8	4.4	3.5	4.4
Waco	113.7	115.2	113.7	115.3	4.8	5.5	4.5	5.4	4.2	4.8	3.9	4.7
Wichita Falls	74.4	75.7	74.0	75.5	3.0	3.9	2.8	4.0	4.1	5.2	3.8	5.3
Utah												
Logan	1,376.0	1,390.3	1,380.0	1,389.2	35.8	45.5	36.2	45.7	2.6	3.3	2.6	3.3
Ogden-Clearfield	67.7	69.2	68.5	69.7	1.3	1.7	1.3	1.7	2.0	2.5	1.9	2.4
Provo-Orem	263.5	265.8	264.5	265.5	7.7	9.3	7.7	9.5	2.9	3.5	2.9	3.6
St. George	230.4	229.9	231.7	229.8	5.5	6.9	5.7	6.9	2.4	3.0	2.5	3.0
Salt Lake City	63.9	63.2	63.6	62.9	1.7	3.0	1.8	3.0	2.7	4.7	2.8	4.7
Vermont	353.2	353.4	353.3	357.3	12.6	17.2	11.6	16.4	3.6	4.9	3.3	4.6
Burlington-South Burlington	112.6	112.9	112.7	114.4	3.7	5.0	3.5	4.9	3.3	4.5	3.1	4.3
Virginia												
Blacksburg-Christiansburg-Radford	4,058.4	4,129.1	4,057.1	4,139.6	123.2	172.3	120.8	172.9	3.0	4.2	3.0	4.2
Charlottesville	78.0	79.5	78.6	80.3	2.8	4.3	2.6	4.1	3.6	5.4	3.3	5.1
Danville	105.9	106.8	106.6	107.0	2.4	3.6	2.5	3.7	2.3	3.4	2.3	3.4
Harrisonburg	51.2	50.8	53.2	51.6	3.4	3.9	2.9	5.0	6.6	7.6	5.4	9.8
Lynchburg	64.4	66.6	65.2	66.9	1.5	2.3	1.6	2.4	2.4	3.5	2.4	3.6
Richmond	122.0	124.9	122.2	125.7	3.9	5.3	3.8	5.4	3.2	4.2	3.2	4.3
Roanoke	641.0	650.0	641.7	652.8	20.2	29.4	19.9	29.0	3.1	4.5	3.1	4.4
Virginia Beach-Norfolk-Newport News	155.6	157.3	154.9	158.0	4.9	6.3	4.7	6.5	3.2	4.0	3.0	4.1
Winchester	816.1	838.8	812.7	840.1	26.6	36.4	25.6	36.5	3.3	4.3	3.2	4.3
Washington	65.4	66.3	65.8	66.4	2.0	2.8	2.0	2.8	3.1	4.3	3.0	4.2
Bellingham	3,430.2	3,492.9	3,447.8	3,524.7	143.3	183.2	139.6	203.8	4.2	5.2	4.0	5.8
Bremerton-Silverdale	104.8	108.1	107.6	110.8	4.1	5.5	4.0	5.7	3.9	5.1	3.7	5.1
Kennewick-Pasco-Richland	122.3	124.0	123.6	126.4	5.1	6.5	5.0	7.0	4.2	5.2	4.0	5.5
Longview	122.0	125.5	121.3	126.7	5.3	6.0	5.0	6.6	4.3	4.8	4.1	5.2
Mount Vernon-Anacortes	43.9	44.3	43.9	45.5	2.8	3.7	2.6	3.9	6.3	8.3	6.0	8.5
Olympia	58.7	59.7	58.2	59.9	2.4	3.2	2.4	3.6	4.1	5.4	4.1	5.9
Seattle-Tacoma-Bellevue	127.2	130.9	129.0	133.8	5.3	6.6	5.2	7.3	4.2	5.1	4.0	5.5
Spokane	1,827.3	1,866.0	1,835.6	1,874.4	71.5	91.2	70.1	103.9	3.9	4.9	3.8	5.5
Wenatchee	232.9	235.3	235.9	239.0	9.9	12.7	9.7	13.6	4.3	5.4	4.1	5.7
Yakima	65.8	66.2	64.2	65.1	2.3	2.8	2.3	2.9	3.5	4.2	3.6	4.5
West Virginia	126.3	126.4	125.9	127.6	5.6	7.0	5.3	7.3	4.4	5.6	4.2	5.7
Charleston	810.4	807.8	808.6	810.5	32.3	29.7	32.8	32.1	4.0	3.7	4.1	4.0
Huntington-Ashland	140.3	138.8	139.0	138.7	5.1	4.4	5.2	4.7	3.7	3.2	3.7	3.4
Morgantown	134.1	133.5	133.8	133.9	5.9	6.6	5.5	6.3	4.4	4.9	4.1	4.7
Parkersburg-Marietta-Vienna	63.0	64.4	63.5	64.7	1.9	1.7	2.0	1.8	3.1	2.6	3.1	2.7
Wheeling	80.3	79.8	81.7	80.3	3.5	3.9	3.4	3.8	4.4	4.9	4.2	4.8
Wisconsin	68.1	69.1	68.5	69.7	3.2	3.5	3.1	3.7	4.7	5.0	4.6	5.4
Appleton	3,088.1	3,086.4	3,084.2	3,088.1	134.2	134.8	128.5	137.1	4.3	4.4	4.2	4.4
Eau Claire	121.5	120.3	121.3	120.4	5.1	4.8	4.9	5.1	4.2	4.0	4.1	4.2
Fond du Lac	90.0	89.3	90.2	89.9	3.6	3.4	3.3	3.5	4.0	3.8	3.7	3.8
Green Bay	56.5	57.0	56.3	57.1	2.3	2.3	2.3	2.5	4.1	4.1	4.0	4.3
Janesville	169.4	168.4	169.3	168.8	7.3	7.3	7.1	7.5	4.3	4.3	4.2	4.4
La Crosse	84.0	82.9	83.9	83.0	4.2	5.3	4.3	5.4	5.0	6.4	5.2	6.6
Madison	74.6	73.8	75.2	74.3	2.7	2.9	2.6	2.9	3.6	3.9	3.5	3.9
Milwaukee-Waukesha-West Allis	336.2	334.2	335.6	333.9	11.4	11.4	10.9	11.6	3.4	3.4	3.2	3.5
Oshkosh-Neenah	798.0	790.3	798.6	791.5	39.1	38.4	36.8	38.2	4.9	4.9	4.6	4.8
Racine	92.8	92.2	92.4	92.1	3.9	3.7	3.7	3.8	4.2	4.1	4.0	4.1
Sheboygan	98.8	97.1	98.6	97.1	5.3	5.2	5.1	5.2	5.3	5.4	5.2	5.4
Wausau	65.7	64.8	65.0	64.4	2.7	2.7	2.6	2.7	4.0	4.1	3.9	4.3
Wyoming	74.7	73.7	74.6	73.6	2.9	3.1	2.8	3.0	3.8	4.1	3.7	4.1
Casper	288.7	293.7	288.5	293.9	6.6	7.8	6.7	8.0	2.3	2.7	2.3	2.7
Cheyenne	39.3	39.7	39.8	40.3	0.9	1.0	0.9	1.0	2.2	2.5	2.2	2.6
	41.8	41.7	42.2	42.4	1.2	1.5	1.3	1.5	2.9	3.6	3.0	3.4

See footnotes at end of table.

Table 1. Civilian labor force and unemployment by state and metropolitan area—Continued

(Numbers in thousands)

State and area	Civilian labor force				Unemployed							
					Number				Percent of labor force			
	September		October		September		October		September		October	
	2007	2008	2007	2008 ^P	2007	2008	2007	2008 ^P	2007	2008	2007	2008 ^P
Puerto Rico	1,362.7	1,362.7	1,366.5	1,357.6	150.8	162.9	162.5	171.9	11.1	12.0	11.9	12.7
Aguadilla-Isabela-San Sebastian	111.4	112.7	112.0	112.3	13.8	14.6	14.6	15.3	12.4	12.9	13.1	13.6
Fajardo	29.1	28.5	28.9	29.0	4.0	4.1	4.3	4.3	13.7	14.2	14.7	14.7
Guayama	26.6	27.9	26.7	27.5	3.8	4.3	4.2	4.5	14.3	15.3	15.6	16.5
Mayaguez	37.0	37.2	37.2	37.1	4.4	4.9	4.8	5.2	11.8	13.1	13.0	14.1
Ponce	90.7	91.2	90.6	91.3	10.5	11.2	11.4	12.0	11.6	12.3	12.6	13.1
San German-Cabo Rojo	52.7	52.0	53.1	51.9	6.0	6.6	6.4	7.0	11.3	12.6	12.1	13.5
San Juan-Caguas-Guaynabo	921.8	914.6	923.5	908.5	95.0	102.9	102.5	108.4	10.3	11.2	11.1	11.9
Yauco	37.9	39.0	38.1	39.6	5.4	5.6	5.6	5.9	14.1	14.3	14.8	15.0

P = preliminary.

¹ Area boundaries do not reflect official OMB definitions.

NOTE: Data refer to place of residence. Data for Puerto Rico are derived from a monthly household survey similar to the Current Population Survey. Area definitions are based on Office of Management and Budget Bulletin No. 08-01, dated November 20, 2007, and are available at <http://www.bls.gov/lau/lausmsa.htm>. Areas in the six New England states are Metropolitan New England

City and Town Areas (NECTAs), while areas in other states are county-based. Some metropolitan areas lie in two or more states. They are listed under the state that appears first in their titles. Davenport-Moline-Rock Island, Iowa-Ill., and Weirton-Steubenville, W.Va.-Ohio, are the exceptions in that they are listed under Illinois and Ohio, respectively, for operational reasons. Estimates for the latest month are subject to revision the following month.

Table 2. Civilian labor force and unemployment by state, selected metropolitan area, and metropolitan division ¹

(Numbers in thousands)

State, area, and division	Civilian labor force				Unemployed							
					Number				Percent of labor force			
	September		October		September		October		September		October	
	2007	2008	2007	2008 ^P	2007	2008	2007	2008 ^P	2007	2008	2007	2008 ^P
California	18,262.0	18,485.3	18,277.9	18,605.2	985.5	1,389.5	986.6	1,486.3	5.4	7.5	5.4	8.0
Los Angeles-Long Beach-Santa Ana	6,582.3	6,579.1	6,594.1	6,626.0	326.3	480.0	318.0	509.6	5.0	7.3	4.8	7.7
Los Angeles-Long Beach-Glendale	4,953.1	4,942.9	4,960.8	4,981.0	257.6	385.0	249.5	410.5	5.2	7.8	5.0	8.2
Santa Ana-Anaheim-Irvine	1,629.1	1,636.2	1,633.3	1,645.0	68.7	95.0	68.4	99.1	4.2	5.8	4.2	6.0
San Francisco-Oakland-Fremont	2,236.7	2,274.6	2,243.8	2,288.6	101.7	138.9	101.2	147.7	4.5	6.1	4.5	6.5
Oakland-Fremont-Hayward	1,283.5	1,299.0	1,287.7	1,307.9	62.9	87.4	62.9	92.8	4.9	6.7	4.9	7.1
San Francisco-San Mateo-Redwood City	953.2	975.6	956.0	980.7	38.9	51.5	38.4	54.9	4.1	5.3	4.0	5.6
District of Columbia	325.4	331.6	325.1	329.8	19.3	23.6	17.8	24.7	5.9	7.1	5.5	7.5
Washington-Arlington-Alexandria ²	2,982.6	3,013.2	2,984.1	3,023.9	90.2	118.7	88.6	124.3	3.0	3.9	3.0	4.1
Bethesda-Frederick-Gaithersburg ³	634.2	635.2	636.3	637.9	17.0	21.4	17.2	23.6	2.7	3.4	2.7	3.7
Washington-Arlington-Alexandria ²	2,348.4	2,378.0	2,347.9	2,386.0	73.2	97.3	71.5	100.7	3.1	4.1	3.0	4.2
Florida	9,206.8	9,373.4	9,205.4	9,379.0	409.5	643.6	400.5	660.4	4.4	6.9	4.4	7.0
Miami-Fort Lauderdale-Pompano Beach	2,833.7	2,875.4	2,846.3	2,882.2	119.8	184.1	118.3	186.2	4.2	6.4	4.2	6.5
Fort Lauderdale-Pompano Beach-Deerfield Beach	1,003.5	1,010.0	1,000.8	1,009.6	39.4	62.0	38.4	63.3	3.9	6.1	3.8	6.3
Miami-Miami Beach-Kendall	1,187.0	1,209.4	1,200.7	1,215.5	48.3	73.7	49.4	74.4	4.1	6.1	4.1	6.1
West Palm Beach-Boca Raton-Boynton Beach	643.2	656.0	644.9	657.1	32.1	48.4	30.5	48.5	5.0	7.4	4.7	7.4
Illinois	6,715.5	6,691.5	6,719.0	6,635.3	328.8	435.9	322.1	449.3	4.9	6.5	4.8	6.8
Chicago-Naperville-Joliet ²	4,896.1	4,900.7	4,894.6	4,841.7	231.8	308.0	222.9	309.5	4.7	6.3	4.6	6.4
Chicago-Naperville-Joliet	4,106.8	4,104.1	4,107.0	4,047.1	196.4	260.3	188.6	259.0	4.8	6.3	4.6	6.4
Gary ³	328.7	335.8	329.3	335.7	14.0	18.6	13.8	18.9	4.3	5.5	4.2	5.6
Lake County-Kenosha County ²	460.7	460.8	458.3	458.9	21.4	29.1	20.6	31.5	4.7	6.3	4.5	6.9
Massachusetts	3,393.3	3,396.4	3,389.1	3,411.8	148.7	180.5	130.7	170.1	4.4	5.3	3.9	5.0
Boston-Cambridge-Quincy ²	2,469.5	2,483.3	2,473.9	2,498.0	101.4	123.5	89.5	114.9	4.1	5.0	3.6	4.6
Boston-Cambridge-Quincy	1,493.4	1,502.9	1,496.6	1,512.4	59.7	71.8	52.1	66.1	4.0	4.8	3.5	4.4
Brockton-Bridgewater-Easton	123.9	124.0	124.3	124.9	6.1	7.4	5.5	7.0	5.0	6.0	4.4	5.6
Framingham	145.0	145.8	145.4	146.8	5.2	6.2	4.5	5.8	3.6	4.3	3.1	3.9
Haverhill-North Andover-Amesbury ²	120.4	120.7	120.2	120.9	5.0	6.3	4.5	5.9	4.1	5.2	3.8	4.9
Lawrence-Methuen-Salem ²	69.3	69.7	68.8	69.7	4.5	5.9	4.1	5.6	6.5	6.5	6.0	8.1
Lowell-Billerica-Chelmsford ²	150.9	151.5	151.0	152.6	6.7	8.4	6.0	7.9	4.4	5.5	4.0	5.2
Nashua ²	178.0	179.8	178.7	180.4	5.7	7.1	5.4	6.8	3.2	3.9	3.0	3.8
Peabody	126.1	126.2	126.0	127.0	5.7	6.9	5.0	6.6	4.6	5.4	4.0	5.2
Taunton-Norton-Raynham	62.7	62.7	62.8	63.2	2.8	3.5	2.4	3.4	4.5	5.7	3.9	5.4
Michigan	5,008.6	4,920.4	4,998.0	4,932.3	348.0	407.2	336.7	422.6	6.9	8.3	6.7	8.6
Detroit-Warren-Livonia	2,138.1	2,122.9	2,138.9	2,127.0	166.4	176.0	166.8	187.0	7.8	8.3	7.8	8.8
Detroit-Livonia-Dearborn	877.9	865.5	879.6	868.2	78.6	83.5	81.7	87.4	9.0	9.7	9.3	10.1
Warren-Troy-Farmington Hills	1,260.2	1,257.3	1,259.3	1,258.9	87.7	92.5	85.2	99.6	7.0	7.4	6.8	7.9
New York	9,481.9	9,597.2	9,506.2	9,638.9	423.4	541.0	417.5	525.4	4.5	5.6	4.4	5.5
New York-Northern New Jersey-Long Island ²	9,281.9	9,413.6	9,312.8	9,470.7	408.0	521.0	400.3	516.9	4.4	5.5	4.3	5.5
Edison-New Brunswick ³	1,186.9	1,203.2	1,188.2	1,210.6	43.5	62.0	40.6	62.7	3.7	5.2	3.4	5.2
Nassau-Suffolk	1,479.2	1,495.8	1,481.8	1,501.1	57.2	78.2	52.6	74.2	3.9	5.2	3.5	4.9
New York-White Plains-Wayne ²	5,533.9	5,616.8	5,558.0	5,651.9	262.7	319.2	265.1	318.3	4.7	5.7	4.8	5.6
Newark-Union ³	1,081.9	1,097.9	1,084.9	1,107.1	44.6	61.6	42.0	61.6	4.1	5.6	3.9	5.6
Pennsylvania	6,281.9	6,430.1	6,290.1	6,445.4	254.6	337.3	255.0	347.3	4.1	5.2	4.1	5.4
Philadelphia-Camden-Wilmington ²	2,934.4	2,979.4	2,953.2	3,008.3	122.5	165.1	121.0	169.8	4.2	5.5	4.1	5.6
Camden ³	653.0	664.5	656.9	671.1	27.2	37.9	25.5	38.3	4.2	5.7	3.9	5.7
Philadelphia	1,926.7	1,957.7	1,936.3	1,973.4	82.6	109.2	82.7	111.6	4.3	5.6	4.3	5.7
Wilmington ³	354.8	357.2	360.1	363.8	12.6	18.0	12.8	19.9	3.6	5.0	3.6	5.5
Texas	11,542.1	11,797.3	11,533.3	11,831.1	502.0	616.1	465.6	636.8	4.3	5.2	4.0	5.4
Dallas-Fort Worth-Arlington	3,116.7	3,164.8	3,115.5	3,180.6	134.5	167.1	126.0	173.6	4.3	5.3	4.0	5.5
Dallas-Plano-Irving	2,081.8	2,112.4	2,081.6	2,124.6	91.1	113.8	85.6	118.5	4.4	5.4	4.1	5.6
Fort Worth-Arlington	1,034.9	1,052.4	1,033.9	1,056.0	43.4	53.2	40.5	55.2	4.2	5.1	3.9	5.2
Washington	3,430.2	3,492.9	3,447.8	3,524.7	143.3	183.2	139.6	203.8	4.2	5.2	4.0	5.8
Seattle-Tacoma-Bellevue	1,827.3	1,866.0	1,835.6	1,874.4	71.5	91.2	70.1	103.9	3.9	4.9	3.8	5.5
Seattle-Bellevue-Everett	1,440.4	1,467.3	1,443.9	1,471.0	54.1	68.2	53.1	78.5	3.8	4.7	3.7	5.3
Tacoma	386.8	398.7	391.7	403.4	17.3	22.9	17.0	25.4	4.5	5.8	4.3	6.3

^P = preliminary.

¹ These 11 areas contain all of the 34 metropolitan divisions.

² Part of the area (or division) is in one or more adjacent states.

³ All of the division is in one or more adjacent states.

NOTE: Data refer to place of residence. Area definitions are based on Office of Management and Budget Bulletin No. 08-01, dated November 20, 2007, and are available at <http://www.bls.gov/lau/lausmsa.htm>. Areas in the six New England states are Metropolitan New England City and Town Areas (NECTAs), while areas in other states are county-based. Some metropolitan areas lie in two or more states. They are listed under the state that corresponds to the first city in their title.

Metropolitan divisions are listed under their metropolitan areas. Some divisions lie in more than one state, and some, like Camden, N.J., are totally outside the states under which their metropolitan areas are listed. Three sets of metropolitan areas and divisions have similar or identical titles. For Washington-Arlington-Alexandria, D.C.-Va.-Md.-W.Va., the metropolitan area and division titles are identical. For the Boston-Cambridge-Quincy, Mass.-N.H., and Chicago-Naperville-Joliet, Ill.-Ind.-Wis., metropolitan areas, the division titles are similar but include only Massachusetts and Illinois, respectively. Estimates for the latest month are subject to revision the following month.

Table 3. Employees on nonfarm payrolls by state and metropolitan area

(Numbers in thousands)

State and area	September		October		Change from October 2007 to October 2008 P	
	2007	2008	2007	2008P	Number	Percent
Alabama	2,013.6	2,012.1	2,014.2	2,011.3	-2.9	-0.1
Anniston-Oxford	53.5	53.7	53.4	53.5	.1	.2
Auburn-Opelika	56.3	56.7	56.1	56.8	.7	1.2
Birmingham-Hoover	532.9	531.7	534.4	532.0	-2.4	-4
Decatur	59.4	58.7	59.4	58.6	-.8	-1.3
Dothan	63.1	62.4	62.8	62.3	-.5	-.8
Florence-Muscle Shoals	57.8	58.2	57.7	58.1	.4	.7
Huntsville	211.2	215.1	211.6	215.1	3.5	1.7
Mobile	183.4	184.2	183.8	184.4	.6	.3
Montgomery	180.1	181.5	180.4	181.8	1.4	.8
Tuscaloosa	98.5	98.7	98.5	98.8	.3	.3
Alaska	332.2	333.7	314.6	316.7	2.1	.7
Anchorage	172.2	173.5	168.8	170.0	1.2	.7
Arizona	2,670.4	2,611.1	2,679.8	2,608.9	-70.9	-2.6
Flagstaff	66.2	65.3	65.5	64.7	-.8	-1.2
Lake Havasu City-Kingman	53.7	51.4	54.0	50.7	-3.3	-6.1
Phoenix-Mesa-Scottsdale	1,911.2	1,867.8	1,917.6	1,868.3	-49.3	-2.6
Prescott	65.5	64.0	65.7	63.7	-2.0	-3.0
Tucson	381.9	372.8	384.8	372.1	-12.7	-3.3
Yuma	52.2	51.6	53.2	51.8	-1.4	-2.6
Arkansas	1,211.3	1,214.7	1,211.9	1,212.3	.4	.0
Fayetteville-Springdale-Rogers	208.7	210.5	209.3	211.0	1.7	.8
Fort Smith	126.9	127.1	126.3	126.2	-.1	-.1
Little Rock-North Little Rock-Conway	348.7	349.7	348.7	348.8	.1	.0
California	15,193.2	15,104.1	15,228.6	15,127.7	-100.9	-.7
Bakersfield	239.0	242.0	240.4	243.7	3.3	1.4
Chico	76.9	77.1	76.6	76.4	-.2	-.3
Fresno	306.5	305.2	306.9	304.7	-2.2	-.7
Los Angeles-Long Beach-Santa Ana	5,628.3	5,572.7	5,639.9	5,589.3	-50.6	-.9
Merced	59.5	60.6	59.4	60.4	1.0	1.7
Modesto	162.9	162.0	159.0	158.1	-.9	-.6
Napa	64.3	63.8	64.4	64.4	.0	.0
Oxnard-Thousand Oaks-Ventura	295.3	287.4	293.8	288.3	-5.5	-1.9
Redding	66.6	65.7	66.5	65.0	-1.5	-2.3
Riverside-San Bernardino-Ontario	1,262.0	1,242.2	1,266.4	1,244.1	-22.3	-1.8
Sacramento-Arden-Arcade-Roseville	903.9	892.9	905.9	894.5	-11.4	-1.3
Salinas	129.3	130.5	129.4	130.4	1.0	.8
San Diego-Carlsbad-San Marcos	1,308.3	1,300.4	1,313.1	1,300.9	-12.2	-.9
San Francisco-Oakland-Fremont	2,042.5	2,026.6	2,049.7	2,029.5	-20.2	-1.0
San Jose-Sunnyvale-Santa Clara	908.1	911.0	913.2	913.9	.7	.1
San Luis Obispo-Paso Robles	103.7	102.7	105.6	103.9	-1.7	-1.6
Santa Barbara-Santa Maria-Goleta	172.7	172.9	175.4	174.1	-1.3	-.7
Santa Cruz-Watsonville	95.9	96.0	98.6	97.0	-1.6	-1.6
Santa Rosa-Petaluma	191.8	191.2	192.7	191.6	-1.1	-.6
Stockton	214.5	213.6	214.8	212.3	-2.5	-1.2
Vallejo-Fairfield	128.1	125.7	127.5	125.7	-1.8	-1.4
Visalia-Porterville	113.9	112.1	114.4	112.3	-2.1	-1.8
Colorado	2,352.2	2,373.9	2,348.5	2,360.2	11.7	.5
Boulder	167.6	170.0	168.3	170.7	2.4	1.4
Colorado Springs	263.6	263.0	262.7	261.0	-1.7	-.6
Denver-Aurora	1,253.4	1,263.1	1,254.7	1,256.3	1.6	.1
Fort Collins-Loveland	140.5	141.3	139.5	139.5	.0	.0
Grand Junction	63.9	66.6	64.1	66.6	2.5	3.9
Greeley	83.4	84.5	84.0	84.9	.9	1.1
Pueblo	58.8	59.3	59.1	59.3	.2	.3
Connecticut	1,704.0	1,703.9	1,712.5	1,709.0	-3.5	-.2
Bridgeport-Stamford-Norwalk	421.7	424.5	422.9	425.3	2.4	.6
Danbury	69.8	71.1	70.2	71.4	1.2	1.7
Hartford-West Hartford-East Hartford	558.5	567.3	562.6	570.8	8.2	1.5
New Haven	277.9	277.9	280.2	280.2	.0	.0
Norwich-New London	137.4	137.4	137.0	136.4	-.6	-.4
Waterbury	68.2	68.8	68.7	69.0	.3	.4
Delaware	437.8	439.3	438.4	438.3	-.1	.0
Dover	66.0	65.8	66.4	65.9	-.5	-.8
District of Columbia	690.7	704.3	699.5	710.1	10.6	1.5
Washington-Arlington-Alexandria	2,992.3	3,030.7	3,005.2	3,040.9	35.7	1.2
Florida	7,984.7	7,869.1	8,022.4	7,870.3	-152.1	-1.9
Bradenton-Sarasota-Venice	293.6	285.9	292.2	284.7	-7.5	-2.6
Cape Coral-Fort Myers	222.3	215.0	223.1	215.4	-7.7	-3.5
Deltona-Daytona Beach-Ormond Beach	171.6	169.2	172.0	169.3	-2.7	-1.6
Fort Walton Beach-Crestview-Destin	85.4	83.9	85.0	83.2	-1.8	-2.1
Gainesville	135.8	137.3	136.7	137.4	.7	.5
Jacksonville	630.7	625.1	633.3	624.0	-9.3	-1.5
Lakeland-Winter Haven	213.9	208.2	213.9	208.2	-5.7	-2.7
Miami-Fort Lauderdale-Pompano Beach	2,420.8	2,388.1	2,431.6	2,391.1	-40.5	-1.7

See footnotes at end of table.

Table 3. Employees on nonfarm payrolls by state and metropolitan area—Continued

(Numbers in thousands)

State and area	September		October		Change from October 2007 to October 2008 P	
	2007	2008	2007	2008P	Number	Percent
Florida—Continued						
Naples-Marco Island	125.7	122.2	127.2	123.4	-3.8	-3.0
Ocala	105.0	103.2	105.6	103.2	-2.4	-2.3
Orlando-Kissimmee	1,096.1	1,096.0	1,101.6	1,097.2	-4.4	-4
Palm Bay-Melbourne-Titusville	210.9	208.8	211.3	208.4	-2.9	-1.4
Panama City-Lynn Haven	77.2	75.5	76.9	75.2	-1.7	-2.2
Pensacola-Ferry Pass-Brent	175.4	174.0	175.2	173.1	-2.1	-1.2
Port St. Lucie	131.8	132.2	132.7	132.5	-.2	-.2
Tallahassee	179.7	178.1	181.0	179.3	-1.7	-1.9
Tampa-St. Petersburg-Clearwater	1,292.5	1,271.7	1,292.1	1,270.9	-21.2	-1.6
Georgia						
Albany	64.7	63.9	64.5	64.1	-.4	-.6
Athens-Clarke County	83.7	84.0	84.3	84.4	.1	.1
Atlanta-Sandy Springs-Marietta	2,466.9	2,434.1	2,479.5	2,434.7	-44.8	-1.8
Augusta-Richmond County	217.0	214.9	217.0	214.4	-2.6	-1.2
Columbus	121.6	120.8	122.0	120.1	-1.9	-1.6
Dalton	78.2	75.7	78.0	75.1	-2.9	-3.7
Gainesville	77.4	77.5	77.6	77.5	-.1	-.1
Macon	100.3	99.9	100.8	100.7	-.1	-.1
Savannah	161.6	160.4	162.4	160.4	-2.0	-1.2
Valdosta	56.2	55.3	56.7	55.5	-1.2	-2.1
Warner Robins	58.9	58.3	59.2	58.7	-.5	-.8
Hawaii						
Honolulu	622.4	620.2	623.4	621.5	-1.9	-.3
Honolulu	454.9	452.2	455.3	454.4	-.9	-.2
Idaho						
Boise City-Nampa	667.5	658.5	664.5	652.7	-11.8	-1.8
Boise City-Nampa	278.1	275.1	279.0	273.3	-5.7	-2.0
Coeur d'Alene	58.5	59.3	58.6	58.9	.3	.5
Illinois						
Bloomington-Normal	92.3	92.9	92.6	92.8	.2	.2
Champaign-Urbana	114.6	114.3	115.9	116.1	.2	.2
Chicago-Naperville-Joliet	4,587.8	4,587.6	4,588.5	4,576.1	-12.4	-.3
Davenport-Moline-Rock Island	189.1	190.2	189.1	189.7	.6	.3
Decatur	55.8	55.7	56.0	55.8	-.2	-.4
Peoria	188.7	190.7	189.0	190.5	1.5	.8
Rockford	163.4	162.6	160.5	162.3	1.8	1.1
Springfield	111.9	112.3	112.3	112.5	.2	.2
Indiana						
Bloomington	85.7	85.3	86.0	86.4	.4	.5
Elkhart-Goshen	130.4	125.1	130.1	124.3	-5.8	-4.5
Evansville	180.9	180.7	181.3	180.6	-.7	-.4
Fort Wayne	219.1	218.7	219.6	217.4	-2.2	-1.0
Indianapolis-Carmel	925.5	927.1	927.0	929.9	2.9	.3
Lafayette	96.3	96.1	96.5	96.6	.1	.1
Muncie	54.8	54.1	54.8	54.2	-.6	-1.1
South Bend-Mishawaka	146.5	143.0	147.2	144.4	-2.8	-1.9
Terre Haute	75.1	73.6	75.2	73.9	-1.3	-1.7
Iowa						
Cedar Rapids	137.7	138.8	138.2	140.0	1.8	1.3
Des Moines-West Des Moines	323.8	324.9	325.1	326.0	.9	.3
Dubuque	56.2	55.2	56.3	55.5	-.8	-1.4
Iowa City	91.0	90.8	92.1	91.2	-.9	-1.0
Sioux City	74.8	73.7	74.9	73.9	-1.0	-1.3
Waterloo-Cedar Falls	90.7	91.0	91.6	92.3	.7	.8
Kansas						
Topeka	110.8	111.1	110.5	111.1	.6	.5
Wichita	305.0	304.5	306.5	305.7	-.8	-.3
Kentucky						
Bowling Green	62.8	63.2	63.1	62.8	-.3	-.5
Lexington-Fayette	256.8	257.3	258.2	258.0	-.2	-.1
Louisville-Jefferson County	631.3	626.3	632.8	624.6	-8.2	-1.3
Louisiana						
Alexandria	65.6	65.4	65.8	65.8	.0	.0
Baton Rouge	373.7	373.4	375.3	376.6	1.3	.3
Houma-Bayou Cane-Thibodaux	95.9	95.0	96.6	95.7	-.9	-.9
Lafayette	150.2	152.2	150.8	153.4	2.6	1.7
Lake Charles	92.5	92.1	92.7	92.9	.2	.2
Monroe	79.8	78.9	79.7	78.9	-.8	-1.0
New Orleans-Metairie-Kenner	517.5	525.2	521.4	531.0	9.6	1.8
Shreveport-Bossier City	180.4	182.3	180.6	182.7	2.1	1.2
Maine						
Bangor	66.3	66.4	67.4	67.2	-.2	-.3
Portland-South Portland-Biddeford	197.6	197.2	197.6	196.2	-1.4	-.7

See footnotes at end of table.

Table 3. Employees on nonfarm payrolls by state and metropolitan area—Continued

(Numbers in thousands)

State and area	September		October		Change from October 2007 to October 2008 P	
	2007	2008	2007	2008P	Number	Percent
Maryland	2,618.6	2,645.0	2,627.9	2,650.7	22.8	0.9
Baltimore-Towson	1,322.0	1,330.4	1,328.4	1,335.4	7.0	.5
Hagerstown-Martinsburg	102.5	103.4	102.5	103.3	.8	.8
Salisbury	56.1	56.4	56.1	56.5	.4	.7
Massachusetts	3,299.9	3,309.2	3,310.0	3,314.5	4.5	.1
Barnstable Town	105.1	104.7	101.1	100.9	-.2	-.2
Boston-Cambridge-Quincy	2,494.2	2,513.7	2,504.7	2,519.6	14.9	.6
New Bedford	67.1	66.4	67.5	66.5	-1.0	-1.5
Springfield	298.9	298.0	299.9	298.1	-1.8	-.6
Worcester	249.2	246.1	249.4	247.1	-2.3	-.9
Michigan	4,297.2	4,215.8	4,282.8	4,210.6	-72.2	-1.7
Ann Arbor	200.3	198.5	202.0	199.5	-2.5	-1.2
Battle Creek	59.0	58.0	58.9	57.6	-1.3	-2.2
Detroit-Warren-Livonia	1,966.0	1,905.1	1,964.4	1,908.7	-55.7	-2.8
Flint	148.2	140.0	148.3	139.8	-8.5	-5.7
Grand Rapids-Wyoming	396.8	396.3	397.6	397.6	.0	.0
Holland-Grand Haven	115.2	113.0	115.0	112.5	-2.5	-2.2
Jackson	58.1	57.2	58.3	57.4	-.9	-1.5
Kalamazoo-Portage	148.6	146.9	148.6	147.1	-1.5	-1.0
Lansing-East Lansing	227.5	223.5	228.8	224.1	-4.7	-2.1
Muskegon-Norton Shores	66.2	65.6	65.6	64.6	-1.0	-1.5
Niles-Benton Harbor	66.7	66.4	66.4	66.2	-.2	-.3
Saginaw-Saginaw Township North	89.7	87.3	90.4	87.4	-3.0	-3.3
Minnesota	2,787.9	2,771.3	2,796.9	2,780.0	-16.9	-.6
Duluth	135.4	134.0	136.1	134.7	-1.4	-1.0
Minneapolis-St. Paul-Bloomington	1,805.2	1,796.3	1,812.8	1,798.2	-14.6	-.8
Rochester	108.1	108.6	108.0	108.5	.5	.5
St. Cloud	103.4	103.5	104.8	104.8	.0	.0
Mississippi	1,160.1	1,148.0	1,159.0	1,143.6	-15.4	-1.3
Gulfport-Biloxi	111.6	110.0	111.3	109.8	-1.5	-1.3
Hattiesburg	62.0	59.9	61.8	60.2	-1.6	-2.6
Jackson	262.3	260.6	263.5	260.6	-2.9	-1.1
Pascagoula	58.5	59.3	58.6	59.2	.6	1.0
Missouri	2,817.4	2,798.8	2,819.1	2,804.1	-15.0	-.5
Columbia	93.7	94.0	95.2	95.3	.1	.1
Jefferson City	79.7	79.5	80.1	79.9	-.2	-.2
Joplin	80.6	81.5	80.8	81.9	1.1	1.4
Kansas City	1,022.3	1,017.2	1,022.4	1,017.3	-5.1	-.5
St. Joseph	59.5	59.6	59.9	59.8	-.1	-.2
St. Louis 1	1,365.6	1,353.1	1,365.2	1,353.5	-11.7	-.9
Springfield	203.3	204.6	203.7	204.2	.5	.2
Montana	450.5	455.4	449.2	454.5	5.3	1.2
Billings	81.2	81.6	81.4	82.5	1.1	1.4
Missoula	57.9	57.5	57.8	58.6	.8	1.4
Nebraska	969.2	978.9	972.1	978.8	6.7	.7
Lincoln	175.1	176.3	176.1	177.2	1.1	.6
Omaha-Council Bluffs	468.0	470.7	468.5	471.3	2.8	.6
Nevada	1,291.7	1,284.1	1,294.1	1,287.4	-6.7	-.5
Las Vegas-Paradise	923.4	923.9	927.1	929.1	2.0	.2
Reno-Sparks	226.5	221.7	226.3	220.6	-5.7	-2.5
New Hampshire	659.7	663.1	658.1	661.7	3.6	.5
Manchester	101.6	101.4	101.9	101.8	-.1	-.1
Portsmouth	57.3	57.7	56.5	57.3	.8	1.4
Rochester-Dover	56.7	58.0	57.7	58.7	1.0	1.7
New Jersey	4,073.3	4,060.2	4,093.7	4,075.4	-18.3	-.4
Atlantic City-Hammonton	151.7	151.9	149.3	148.8	-.5	-.3
Trenton-Ewing	237.2	236.9	239.3	238.1	-1.2	-.5
Vineland-Millville-Bridgeton	62.1	60.8	62.5	61.6	-.9	-1.4
New Mexico	850.4	853.3	849.9	850.9	1.0	.1
Albuquerque	396.9	395.4	396.4	394.9	-1.5	-.4
Las Cruces	68.7	70.2	69.3	70.7	1.4	2.0
Santa Fe	66.6	66.0	65.5	65.3	-.2	-.3
New York	8,752.3	8,769.4	8,831.5	8,828.6	-2.9	.0
Albany-Schenectady-Troy	449.1	449.9	453.3	453.3	.0	.0
Binghamton	115.0	114.6	116.5	115.8	-.7	-.6
Buffalo-Niagara Falls	550.6	551.9	554.7	554.9	.2	.0
Glens Falls	55.4	55.4	54.8	54.8	.0	.0
Ithaca	64.5	64.6	65.6	65.4	-.2	-.3
Kingston	64.5	64.3	65.1	65.1	.0	.0
New York-Northern New Jersey-Long Island	8,581.5	8,602.4	8,647.6	8,648.8	1.2	.0
Poughkeepsie-Newburgh-Middletown	254.6	254.9	257.8	258.3	.5	.2
Rochester	515.3	511.6	520.4	517.0	-3.4	-.7
Syracuse	326.0	326.6	328.7	328.3	-.4	-.1
Utica-Rome	133.2	132.8	135.1	134.4	-.7	-.5

See footnotes at end of table.

Table 3. Employees on nonfarm payrolls by state and metropolitan area—Continued

(Numbers in thousands)

State and area	September		October		Change from October 2007 to October 2008 P	
	2007	2008	2007	2008P	Number	Percent
North Carolina	4,184.7	4,176.1	4,198.1	4,177.0	-21.1	-0.5
Asheville	179.9	181.6	180.9	180.9	.0	.0
Burlington	61.8	61.6	61.9	61.5	-.4	-.6
Charlotte-Gastonia-Concord	864.7	878.9	871.5	879.4	7.9	.9
Durham	291.1	294.6	291.2	293.6	2.4	.8
Fayetteville	127.9	129.6	129.2	130.1	.9	.7
Greensboro-High Point	373.8	376.2	375.3	378.0	2.7	.7
Greenville	78.1	78.9	78.5	79.2	.7	.9
Hickory-Lenoir-Morganton	163.6	162.1	164.2	161.9	-2.3	-1.4
Raleigh-Cary	522.0	532.4	525.5	534.3	8.8	1.7
Rocky Mount	64.8	65.0	65.3	65.1	-.2	-.3
Wilmington	149.5	151.8	148.6	150.2	1.6	1.1
Winston-Salem	218.7	224.4	220.7	224.8	4.1	1.9
North Dakota	363.7	367.6	365.0	369.5	4.5	1.2
Bismarck	60.3	61.6	60.8	62.0	1.2	2.0
Fargo	120.5	121.6	121.3	122.3	1.0	.8
Grand Forks	54.6	55.4	55.2	55.8	.6	1.1
Ohio	5,449.6	5,430.2	5,456.6	5,439.1	-17.5	-.3
Akron	342.5	341.1	342.5	340.9	-1.6	-.5
Canton-Massillon	173.4	173.0	173.1	173.1	.0	.0
Cincinnati-Middletown	1,050.4	1,047.4	1,051.6	1,048.5	-3.1	-.3
Cleveland-Elyria-Mentor	1,073.6	1,066.7	1,075.8	1,069.3	-6.5	-.6
Columbus	945.0	951.0	951.8	956.8	5.0	.5
Dayton	404.8	399.8	405.1	400.5	-4.6	-1.1
Lima	55.9	56.1	55.9	55.7	-.2	-.4
Mansfield	57.1	56.4	57.3	56.7	-.6	-1.0
Springfield	52.4	51.8	52.1	52.1	.0	.0
Toledo	333.0	325.2	330.0	325.3	-4.7	-1.4
Youngstown-Warren-Boardman	240.4	242.4	240.7	241.9	1.2	.5
Oklahoma	1,579.3	1,592.3	1,582.6	1,595.3	12.7	.8
Oklahoma City	570.6	579.3	572.6	578.8	6.2	1.1
Tulsa	427.4	426.5	429.0	429.4	.4	.1
Oregon	1,742.4	1,732.5	1,753.9	1,729.4	-24.5	-1.4
Bend	73.2	73.5	72.3	72.5	.2	.3
Eugene-Springfield	154.6	153.2	157.8	155.4	-2.4	-1.5
Medford	86.2	85.1	87.2	86.0	-1.2	-1.4
Portland-Vancouver-Beaverton	1,040.6	1,040.4	1,050.2	1,038.7	-11.5	-1.1
Salem	155.5	155.1	155.0	154.3	-.7	-.5
Pennsylvania	5,816.2	5,812.2	5,851.0	5,834.6	-16.4	-.3
Allentown-Bethlehem-Easton	346.0	345.1	346.5	345.7	-.8	-.2
Altoona	62.9	62.6	63.2	62.8	-.4	-.6
Erie	134.5	134.4	135.2	134.8	-.4	-.3
Harrisburg-Carlisle	332.2	332.2	333.0	332.3	-.7	-.2
Johnstown	61.5	61.1	62.0	61.2	-.8	-1.3
Lancaster	239.8	241.0	240.2	241.5	1.3	.5
Philadelphia-Camden-Wilmington	2,810.8	2,809.3	2,835.6	2,830.3	-5.3	-.2
Pittsburgh	1,152.4	1,159.1	1,156.5	1,164.1	7.6	.7
Reading	174.0	172.8	175.0	173.5	-1.5	-.9
Scranton—Wilkes-Barre	263.1	263.1	264.7	264.4	-.3	-.1
State College	74.7	76.6	76.9	77.8	.9	1.2
Williamsport	53.6	53.4	54.1	53.5	-.6	-1.1
York-Hanover	184.7	184.2	185.0	184.2	-.8	-.4
Rhode Island	496.0	483.0	497.1	482.5	-14.6	-2.9
Providence-Fall River-Warwick	585.0	572.9	587.5	572.8	-14.7	-2.5
South Carolina	1,963.4	1,945.0	1,970.0	1,949.1	-20.9	-1.1
Anderson	64.8	63.5	64.5	63.8	-.7	-1.1
Charleston-North Charleston-Summerville	300.3	298.8	300.6	299.5	-1.1	-.4
Columbia	370.0	365.7	371.7	366.5	-5.2	-1.4
Florence	90.9	91.3	91.0	90.7	-.3	-.3
Greenville-Mauldin-Easley	322.6	324.4	323.4	324.3	.9	.3
Myrtle Beach-North Myrtle Beach-Conway	129.9	127.5	128.0	125.0	-3.0	-2.3
Spartanburg	125.4	127.8	126.0	127.6	1.6	1.3
South Dakota	411.3	417.5	410.2	415.1	4.9	1.2
Rapid City	61.8	62.6	61.1	62.0	.9	1.5
Sioux Falls	135.0	137.5	134.9	137.1	2.2	1.6
Tennessee	2,820.5	2,798.5	2,808.5	2,786.7	-21.8	-.8
Chattanooga	248.9	248.6	249.8	248.0	-1.8	-.7
Clarksville	86.0	85.2	85.8	84.9	-.9	-1.0
Jackson	62.7	62.6	62.4	62.4	.0	.0
Johnson City	82.1	82.4	82.6	82.5	-.1	-.1
Kingsport-Bristol-Bristol	122.3	123.0	122.5	123.4	.9	.7
Knoxville	340.8	339.8	338.8	338.7	-.1	-.3
Memphis	647.7	639.4	647.5	636.7	-10.8	-1.7
Nashville-Davidson-Murfreesboro-Franklin	769.5	767.4	767.4	765.2	-2.2	-.3

See footnotes at end of table.

Table 3. Employees on nonfarm payrolls by state and metropolitan area—Continued

(Numbers in thousands)

State and area	September		October		Change from October 2007 to October 2008 P	
	2007	2008	2007	2008 ^P	Number	Percent
Texas	10,419.6	10,658.2	10,470.4	10,701.8	231.4	2.2
Abilene	66.1	66.9	66.1	67.1	1.0	1.5
Amarillo	112.1	113.2	112.4	113.6	1.2	1.1
Austin-Round Rock	763.6	778.9	766.3	781.0	14.7	1.9
Beaumont-Port Arthur	164.4	165.2	165.0	165.4	.4	.2
Brownsville-Harlingen	122.9	125.3	123.5	126.0	2.5	2.0
College Station-Bryan	91.8	94.2	92.9	95.3	2.4	2.6
Corpus Christi	176.8	179.2	176.6	179.4	2.8	1.6
Dallas-Fort Worth-Arlington	2,964.1	3,019.6	2,976.5	3,026.5	50.0	1.7
El Paso	274.1	280.2	275.1	280.9	5.8	2.1
Houston-Sugar Land-Baytown	2,571.0	2,627.3	2,582.6	2,634.9	52.3	2.0
Killeen-Temple-Fort Hood	122.0	124.2	122.8	125.2	2.4	2.0
Laredo	85.9	88.9	86.4	89.2	2.8	3.2
Longview	96.6	98.7	97.0	99.1	2.1	2.2
Lubbock	128.3	129.9	129.3	130.7	1.4	1.1
McAllen-Edinburg-Mission	209.9	217.0	211.6	219.3	7.7	3.6
Midland	66.7	68.1	66.6	68.1	1.5	2.3
Odessa	60.0	62.0	60.8	62.1	1.3	2.1
San Antonio	838.0	856.8	839.1	857.0	17.9	2.1
Texarkana	56.5	57.9	56.7	57.9	1.2	2.1
Tyler	93.5	94.6	93.9	94.9	1.0	1.1
Waco	110.0	111.7	110.2	111.9	1.7	1.5
Wichita Falls	63.2	64.0	63.3	63.8	.5	.8
Utah	1,264.1	1,264.8	1,262.6	1,262.4	-.2	.0
Ogden-Clearfield	203.2	202.2	202.7	201.6	-1.1	-.5
Provo-Orem	193.0	191.2	193.5	190.8	-2.7	-1.4
St. George	54.3	52.6	54.1	52.2	-1.9	-3.5
Salt Lake City	641.4	644.1	640.7	643.4	2.7	.4
Vermont	310.0	309.2	312.1	311.2	-.9	-.3
Burlington-South Burlington	114.7	114.6	115.3	115.4	.1	.1
Virginia	3,770.0	3,792.2	3,777.6	3,798.2	20.6	.5
Blacksburg-Christiansburg-Radford	71.5	72.0	72.8	72.8	.0	.0
Charlottesville	103.2	102.8	104.0	103.0	-1.0	-1.0
Harrisonburg	64.2	65.3	64.8	66.0	1.2	1.9
Lynchburg	109.3	111.6	110.3	112.3	2.0	1.8
Richmond	633.1	635.2	636.9	637.2	.3	.0
Roanoke	163.3	164.3	163.5	164.3	.8	.5
Virginia Beach-Norfolk-Newport News	775.5	792.1	777.3	791.3	14.0	1.8
Winchester	58.3	58.7	59.3	59.0	-.3	-.5
Washington	2,962.8	2,977.3	2,972.8	2,954.4	-18.4	-.6
Bellingham	84.0	85.6	86.6	87.0	.4	.5
Bremerton-Silverdale	86.4	86.2	87.1	87.1	.0	.0
Kennewick-Pasco-Richland	92.5	95.4	93.5	95.7	2.2	2.4
Olympia	101.4	103.6	102.8	104.5	1.7	1.7
Seattle-Tacoma-Bellevue	1,752.8	1,787.6	1,761.6	1,759.7	-1.9	-.1
Spokane	219.1	218.4	221.7	218.8	-2.9	-1.3
Yakima	79.8	80.3	80.6	80.2	-.4	-.5
West Virginia	761.2	762.3	763.8	765.3	1.5	.2
Charleston	151.3	151.4	150.5	150.7	.2	.1
Huntington-Ashland	121.3	120.8	121.9	121.7	-.2	-.2
Morgantown	62.0	64.2	62.9	64.4	1.5	2.4
Parkersburg-Marietta-Vienna	74.1	73.6	75.8	74.2	-1.6	-2.1
Wheeling	67.6	68.8	68.2	69.2	1.0	1.5
Wisconsin	2,902.7	2,872.2	2,909.8	2,882.5	-27.3	-.9
Appleton	119.1	118.8	119.5	118.9	-.6	-.5
Eau Claire	83.9	83.4	84.4	84.4	.0	.0
Green Bay	170.9	170.5	171.3	170.9	-.4	-.2
Janesville	70.5	68.2	70.5	68.5	-2.0	-2.8
La Crosse	75.0	74.2	75.8	74.7	-1.1	-1.5
Madison	349.8	348.7	350.7	348.9	-1.8	-.5
Milwaukee-Waukesha-West Allis	860.0	851.7	863.3	853.4	-9.9	-1.1
Oshkosh-Neenah	94.1	93.7	93.8	93.5	-.3	-.3
Racine	80.5	78.9	80.7	79.1	-1.6	-2.0
Sheboygan	64.9	64.0	64.4	63.6	-.8	-1.2
Wausau	73.3	72.1	73.2	72.2	-1.0	-1.4
Wyoming	295.0	304.6	292.7	302.2	9.5	3.2
Cheyenne	44.9	45.0	44.8	45.5	.7	1.6
Puerto Rico	1,022.1	992.8	1,023.4	993.2	-30.2	-3.0
Ponce	65.7	64.6	65.5	64.6	-.9	-1.4
San Juan-Caguas-Guaynabo	763.9	741.1	766.2	741.7	-24.5	-3.2
Virgin Islands	45.9	46.4	45.9	46.1	.2	.4

¹ Area boundaries do not reflect official OMB definitions.
^P = preliminary.

NOTE: Data are counts of jobs by place of work. Estimates subsequent to the current benchmark are provisional and will be revised when new information becomes available. Area definitions are based on Office of Management and Budget Bulletin No. 08-01, dated November 20, 2007, and are available at <http://www.bls.gov/lau/lausmsa.htm>. Areas in the six New England states are Metropolitan New England City and Town Areas (NECTAs), while areas in other states are county-based. Some metropolitan

areas lie in two or more states. They are listed under the state that appears first in their titles. Davenport-Moline-Rock Island, Iowa-Ill., and Weirton-Steubenville, W. Va.-Ohio, are the exceptions in that they are listed under Illinois and Ohio, respectively, for operational reasons. Data reflect the conversion to the 2007 version of the North American Industry Classification System (NAICS) as the basis for the assignment and tabulation of economic data by industry, replacing NAICS 2002. For more details, see <http://www.bls.gov/sae/saenaics07.htm>.

Table 4. Employees on nonfarm payrolls by state, selected metropolitan area, and metropolitan division

(Numbers in thousands)

State, area, and division	September		October		Change from October 2007 to October 2008 ^P	
	2007	2008	2007	2008 ^P	Number	Percent
California	15,193.2	15,104.1	15,228.6	15,127.7	-100.9	-0.7
Los Angeles-Long Beach-Santa Ana	5,628.3	5,572.7	5,639.9	5,589.3	-50.6	-0.9
Los Angeles-Long Beach-Glendale	4,120.8	4,098.2	4,128.1	4,112.6	-15.5	-4
Santa Ana-Anaheim-Irvine	1,507.5	1,474.5	1,511.8	1,476.7	-35.1	-2.3
San Francisco-Oakland-Fremont	2,042.5	2,026.6	2,049.7	2,029.5	-20.2	-1.0
Oakland-Fremont-Hayward	1,049.1	1,028.7	1,052.7	1,030.2	-22.5	-2.1
San Francisco-San Mateo-Redwood City	993.4	997.9	997.0	999.3	2.3	.2
District of Columbia	690.7	704.3	699.5	710.1	10.6	1.5
Washington-Arlington-Alexandria ¹	2,992.3	3,030.7	3,005.2	3,040.9	35.7	1.2
Bethesda-Frederick-Gaithersburg ²	577.4	581.6	578.5	583.3	4.8	.8
Washington-Arlington-Alexandria ¹	2,414.9	2,449.1	2,426.7	2,457.6	30.9	1.3
Florida	7,984.7	7,869.1	8,022.4	7,870.3	-152.1	-1.9
Miami-Fort Lauderdale-Pompano Beach	2,420.8	2,388.1	2,431.6	2,391.1	-40.5	-1.7
Fort Lauderdale-Pompano Beach-Deerfield Beach	784.3	771.8	787.7	770.9	-16.8	-2.1
Miami-Miami Beach-Kendall	1,060.3	1,045.5	1,063.7	1,046.8	-16.9	-1.6
West Palm Beach-Boca Raton-Boynton Beach	576.2	570.8	580.2	573.4	-6.8	-1.2
Illinois	6,024.3	6,010.0	6,029.2	6,009.9	-19.3	-3
Chicago-Naperville-Joliet ¹	4,587.8	4,587.6	4,588.5	4,576.1	-12.4	-3
Chicago-Naperville-Joliet	3,898.9	3,896.2	3,901.6	3,886.0	-15.6	-4
Gary ²	284.1	285.7	284.0	285.9	1.9	.7
Lake County-Kenosha County ¹	404.8	405.7	402.9	404.2	1.3	.3
Massachusetts	3,299.9	3,309.2	3,310.0	3,314.5	4.5	.1
Boston-Cambridge-Quincy ¹	2,494.2	2,513.7	2,504.7	2,519.6	14.9	.6
Boston-Cambridge-Quincy	1,708.2	1,727.6	1,719.3	1,734.3	15.0	.9
Brockton-Bridgewater-Easton	90.3	89.8	91.2	90.2	-1.0	-1.1
Framingham	157.7	159.3	158.8	160.1	1.3	.8
Haverhill-North Andover-Amesbury ¹	79.3	79.0	79.0	78.8	-.2	-.3
Lowell-Billerica-Chelmsford ¹	120.0	119.8	120.2	120.2	.0	.0
Nashua ¹	134.4	135.3	134.5	135.4	.9	.7
Peabody	101.8	101.7	102.0	101.9	-.1	-.1
Michigan	4,297.2	4,215.8	4,282.8	4,210.6	-72.2	-1.7
Detroit-Warren-Livonia	1,966.0	1,905.1	1,964.4	1,908.7	-55.7	-2.8
Detroit-Livonia-Dearborn	784.2	748.3	781.1	751.4	-29.7	-3.8
Warren-Troy-Farmington Hills	1,181.8	1,156.8	1,183.3	1,157.3	-26.0	-2.2
New York	8,752.3	8,769.4	8,831.5	8,828.6	-2.9	.0
New York-Northern New Jersey-Long Island ¹	8,581.5	8,602.4	8,647.6	8,648.8	1.2	.0
Edison-New Brunswick ²	1,045.0	1,040.5	1,046.3	1,040.9	-5.4	-0.5
Nassau-Suffolk	1,269.2	1,272.9	1,282.4	1,282.7	.3	.0
New York-White Plains-Wayne ¹	5,231.3	5,255.5	5,278.7	5,286.9	8.2	.2
Newark-Union ²	1,036.0	1,033.5	1,040.2	1,038.3	-1.9	-.2
Pennsylvania	5,816.2	5,812.2	5,851.0	5,834.6	-16.4	-3
Philadelphia-Camden-Wilmington ¹	2,810.8	2,809.3	2,835.6	2,830.3	-5.3	-.2
Camden ²	540.5	540.5	545.1	543.5	-1.6	-.3
Philadelphia	1,916.2	1,915.4	1,933.0	1,931.6	-1.4	-.1
Wilmington ²	354.1	353.4	357.5	355.2	-2.3	-.6
Texas	10,419.6	10,658.2	10,470.4	10,701.8	231.4	2.2
Dallas-Fort Worth-Arlington	2,964.1	3,019.6	2,976.5	3,026.5	50.0	1.7
Dallas-Plano-Irving	2,087.9	2,128.5	2,100.3	2,135.1	34.8	1.7
Fort Worth-Arlington	876.2	891.1	876.2	891.4	15.2	1.7
Washington	2,962.8	2,977.3	2,972.8	2,954.4	-18.4	-.6
Seattle-Tacoma-Bellevue	1,752.8	1,787.6	1,761.6	1,759.7	-1.9	-.1
Seattle-Bellevue-Everett	1,468.9	1,499.4	1,474.5	1,472.5	-2.0	-.1
Tacoma	283.9	288.2	286.5	287.2	.7	.2

¹ Part of the area is in one or more adjacent states.

² All of the area is in one or more adjacent states.

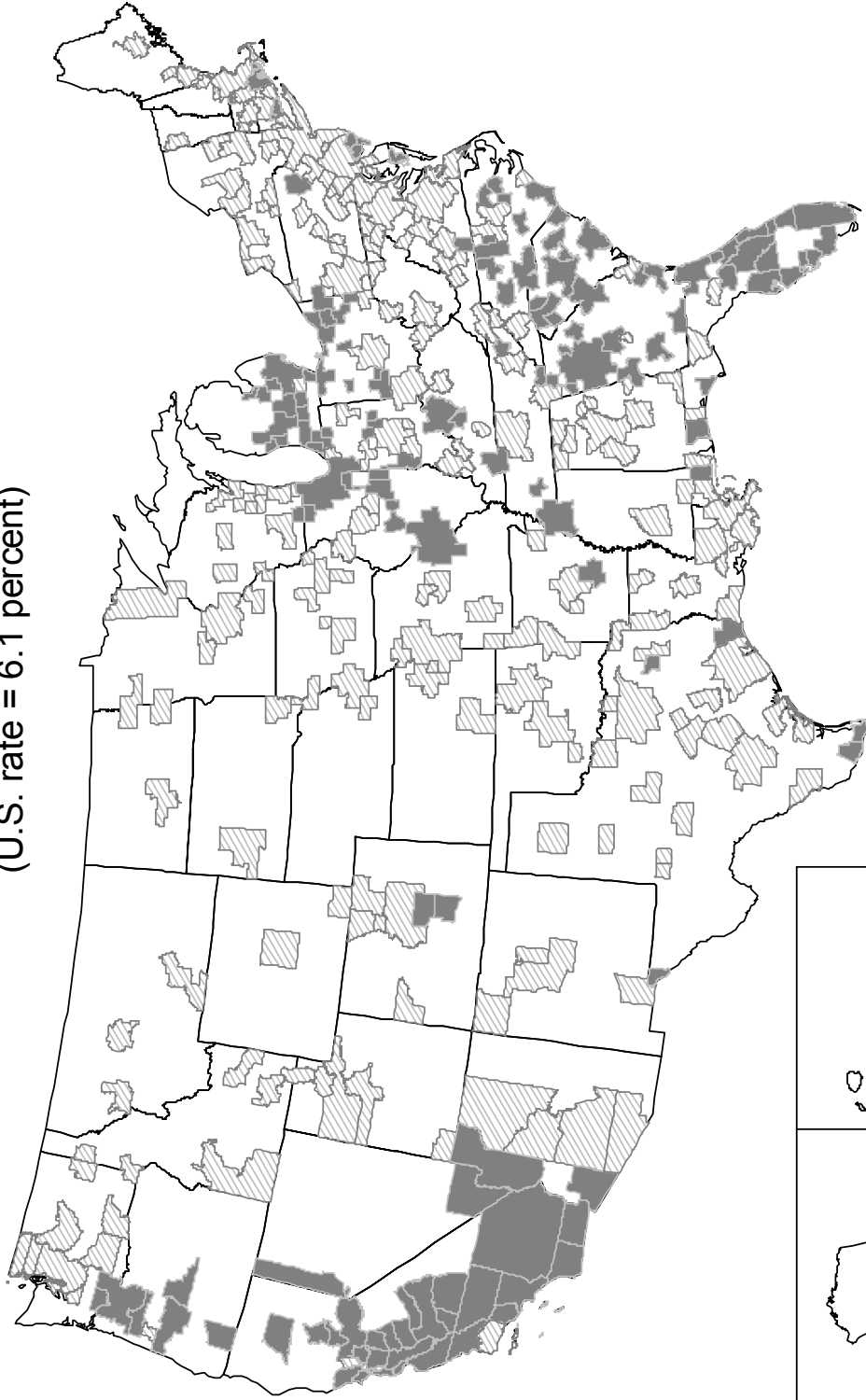
^P = preliminary.

NOTE: Data are counts of jobs by place of work. Estimates subsequent to the current benchmark are provisional and will be revised when new information becomes available. Area definitions are based on Office of Management and Budget Bulletin No. 08-01, dated November 20, 2007, and are available at <http://www.bls.gov/lau/lausmsa.htm>. Areas in the six New England states are Metropolitan New England City and Town

Areas (NECTAs), while areas in other states are county-based. Some metropolitan areas lie in two or more states. They are listed under the state that appears first in their titles. Some divisions lie in more than one state, and some, like Camden, N.J., are totally outside the states under which their metropolitan areas are listed. Data reflect the conversion to the 2007 version of the North American Industry Classification System (NAICS) as the basis for the assignment and tabulation of economic data by industry, replacing NAICS 2002. For more details, see <http://www.bls.gov/sae/saenics07.htm>.

Unemployment rates for metropolitan areas, not seasonally adjusted, October 2008

(U.S. rate = 6.1 percent)



NOTE: Map includes data for 369 metropolitan areas based on Office of Management and Budget Bulletin No. 08-01. Areas in the six New England states are Metropolitan New England City and Town areas (NECTAs), while areas in other states are county-based.

