

American Time Use Survey (ATUS) Data Dictionary:
2003-07 Interview Data
Variables collected in ATUS
January 2009

Important Information about the ATUS Data Dictionary

Introduction

The American Time Use Survey (ATUS) is sponsored by the Bureau of Labor Statistics and conducted by the U.S. Census Bureau. The purpose of this document is to provide information about the variables available on five multi-year ATUS data files: the Respondent file, the Roster file, the Activity file, the Who file, and the Activity Summary file. These files contain information collected and assigned in the 2003, 2004, 2005, 2006 and 2007 ATUS interviews. This data dictionary differs from individual year data dictionaries because it describes files that have data from multiple years.

This data dictionary lists all the variables available on these multi-year files and their valid values. It also provides directions on how to read the data dictionary.

Three additional data dictionaries describe other ATUS data files:

- **ATUS-CPS Data Dictionary:** Describes the variables available on the ATUS-CPS file as well as some variables on the Activity Summary file. The ATUS-CPS file contains data from the Current Population Survey (CPS) for persons selected to be surveyed for the ATUS and for members of their households. (The information on the ATUS-CPS file was collected two to five months before the ATUS interview and in some cases was out of date at the time the ATUS was conducted.) This dictionary is available for both multi-year and single-year ATUS-CPS data files.
- **ATUS Survey Methodology Data Dictionary:** Describes the variables available on the single-year Case History and Call History files. This data dictionary is only available for single-year Case History and Call History files because there are no multi-year Case History and Call History files.
- **Trips Data Dictionary:** Describes the variables available on single year Trips files. This data dictionary is only available for single-year Trips files because there are no multi-year Trips files.

These additional single- and multi-year data dictionaries are available on the ATUS Web site at www.bls.gov/tus/dictionaries.htm.

ATUS Interview Data Files

The following five data files include data available from the ATUS interviews.

1. 2003-07 ATUS Respondent File

This file contains case-specific variables collected in all currently available years of the ATUS (that is, variables for which there is one value for each respondent). These include, for example, labor force and earnings information, total time providing secondary childcare, and ATUS statistical weights. The ATUS statistical weights variable (TUFNWGTP) was developed using the 2006 weighting method. For more information about ATUS statistical weights, why researchers should use them, and details about the ATUS weighting methods, see the ATUS User's Guide (www.bls.gov/tus/atususersguide.pdf).

There is one record for each ATUS respondent.

Below is a simplified example. The TUCASEID identifies each household, and TULINENO identifies each individual within the household. The example contains responses from five individuals; note that the respondent always has TULINENO=1. In the example, each respondent has corresponding values denoting school enrollment (TESCHENR), labor force status (TELFSS), and total time spent alone (TRTALONE). The actual ATUS Respondent file contains many more variables as well as many more lines.

| TUCASEID | TULINENO | TESCHENR | TELF5 | TRTALONE |
|----------------|----------|----------|-------|----------|
| 20070101020210 | 1 | 1 | 1 | 40 |
| 20070101020211 | 1 | 1 | 1 | 350 |
| 20070101020212 | 1 | 1 | 5 | 0 |
| 20070101020213 | 1 | 2 | 5 | 556 |
| 20070101020214 | 1 | 1 | 4 | 100 |

2. 2003-07 ATUS Roster File

This file contains information on the age, sex, and each household member's relationship to the ATUS respondent. The same information is also included for the respondent's own nonhousehold children under 18.

There is one record for each individual in the respondent's household (including the respondent's own nonhousehold children under 18).

A simplified example appears below. The TUCASEID identifies each household, and the TULINENO identifies each individual in the household. In the example below, TUCASEID 20070101020210 has three persons residing in the household, and TUCASEID 20070101020211 and TUCASEID 200701010120212 each have one person. The actual ATUS Roster file contains more variables and many additional lines.

| TUCASEID | TULINENO | TERRP | TESEX | TEAGE |
|----------------|----------|-------|-------|-------|
| 20070101020210 | 1 | 18 | 2 | 42 |
| 20070101020210 | 2 | 20 | 1 | 45 |
| 20070101020210 | 3 | 22 | 1 | 11 |
| 20070101020211 | 1 | 18 | 1 | 65 |
| 20070101020212 | 1 | 18 | 2 | 21 |

3. 2003-07 ATUS Activity File

This file includes activity-level information collected in ATUS, including activity code, location, duration, activity start and stop times, and whether respondents had a child under 13 in their care during the activity. Location (or "where") information is not collected for some selected activities (such as sleeping and grooming); a value that indicates the activity was "out of universe" for the "where" question (-1) is filled in these situations. There is one record for each activity.

A simplified example of the ATUS Activity file appears below. This is an illustration of part of one respondent's day. Because only one person is interviewed per household, each TUCASEID on the Activity file identifies a respondent. Each activity is identified by an activity number (TUACTIONITY_N). The ATUS Activity file contains more variables describing each activity as well as many more lines than does the example below. Due to changes in activity lexicons over the five years of available data, activity codes appear on the 2003-07 Activity file that do not appear on the single-year Activity files. A new 2003-07 Activity Coding lexicon is available at www.bls.gov/tus/lexiconnoex0307.pdf with these unique codes.

| TUCASEID | TUACTIONITY_N | TUSTARTTIM | TUSTOPTIME |
|----------------|---------------|------------|------------|
| 20070101020210 | 1 | 04:00:00 | 07:00:00 |
| 20070101020210 | 2 | 07:00:00 | 07:30:00 |
| 20070101020210 | 3 | 07:30:00 | 10:00:00 |
| 20070101020210 | 4 | 10:00:00 | 12:00:00 |
| 20070101020210 | 5 | 12:00:00 | 14:00:00 |

4. 2003-07 ATUS Who File

This file includes codes that indicate who was present during each activity.

There is one record for each "who" code reported. Therefore, there will be one record for activities done alone and multiple records for activities with multiple people present. For some activities, no "who" codes are collected (such as sleeping and grooming); a value that indicates the activity was "out of universe" for the "who" question (-1) is filled in these situations.

A simplified example appears below. In the first activity (TUACTIONITY_N = 1), no "who" code information was collected because of the associated activity code. Only one person was with the respondent during the second activity, so there is one line for TUACTIONITY_N = 2. Three people were with the respondent during the third activity, so there are three lines for TUACTIONITY_N = 3. Two of those (TUWHO_CODE = 20 and 22) are members of the respondent's household and can be linked to the Roster file using TUCASEID and TULINENO. The third (TUWHO_CODE = 51) is not a member of the respondent's household and thus does not have a positive value for TULINENO.

The actual ATUS Who file contains more variables for each line as well as many additional lines than the example below.

| TUCASEID | TUACTIONITY_N | TUWHO_CODE | TULINENO |
|----------------|---------------|------------|----------|
| 20070101020210 | 1 | -1 | -1 |
| 20070101020210 | 2 | 22 | 3 |
| 20070101020210 | 3 | 20 | 2 |
| 20070101020210 | 3 | 22 | 3 |
| 20070101020210 | 3 | 51 | -1 |

5. 2003-07 ATUS Activity Summary File

The ATUS Activity Summary file contains information about the total number of minutes each respondent spent doing each activity. The file also includes selected variables from the ATUS Respondent, ATUS Roster, and ATUS-CPS files. **The Activity Summary file contains variables not described in this data dictionary. Variables beginning with a lower-case "t" correspond to specific activity codes; definitions for each activity code can be found in the 2003-07 Activity Lexicon (www.bls.gov/tus/lexiconnoex0307.pdf).**

There is one record for each ATUS respondent.

A simplified example of the ATUS Activity Summary file appears below. The variable TUCASEID is the unique identifier for each respondent and the variable TEAGE, which also appears on the ATUS Roster file, shows each respondent's age. The variable t010101 contains the total number of minutes each respondent spent doing activity 010101, "sleeping"; the variable t010102 contains the total number of minutes each respondent spent doing activity 010102, "sleeplessness."

The ATUS Activity Summary file contains more variables describing each activity as well as many more lines than the example below.

| TUCASEID | TEAGE | t010101 | t010102 |
|----------------|-------|---------|---------|
| 20070101020210 | 26 | 480 | 0 |
| 20070101020211 | 53 | 430 | 30 |
| 20070101020212 | 76 | 457 | 0 |
| 20070101020213 | 16 | 600 | 0 |

Valid Values

Each variable has a number of valid values or a range of valid values. For example, the variable TESEX has two valid values: 1 for male and 2 for female. The variable TEAGE, on the other hand, has a range of valid values – any entry between 0 and 85 (except 81 through 84) is considered valid. Individual valid values or a range of valid values are listed under each variable in the data dictionary. A few variables have so many valid values that they are not included in the data dictionary; instead, they are provided in an appendix or a separate document. (References to these are included as a “Note” under the relevant variables in the data dictionary.) One example of such a variable is TEIO1ICD, which identifies the industry code of the respondent’s main job.

Many ATUS variables have the following possible valid values:

| Value | Description |
|-------|-------------|
| -1 | Blank |
| -2 | Don’t know |
| -3 | Refused |

Because so many variables have these possible values, they are not shown as valid entries for each variable.

TUCASEID, the primary identification number for ATUS, does not have either a list of valid values or a range of valid values.

ATUS Naming Conventions and Definitions

ATUS variables are named according to specified rules. Variables with a first character of "T" (for time use) were collected or created through the ATUS interview. Variables with any other first character (most often "P", "G", or "H") were collected or created through the final CPS interview (conducted two to five months prior to the ATUS interview). All of the variables on the ATUS interview data files described in this dictionary begin with "T."

The second and third characters of the name identify the type of variable, and the remaining characters consist of a descriptive name. The rules regarding the first two or three characters are described in the table below (note that the variables on the Activity Summary file that start with a lowercase "t" do not follow these rules):

| Abbreviation | Variable Type | Definition |
|--------------|-------------------|---|
| U | Unedited Variable | An unedited variable generally is produced by the Computer Assisted Telephone Interview (CATI) instrument, either collected or assigned during the interview. There are a few unedited variables that are computed by the processing system, such as the ATUS final weight (TUFINLWGT). |
| E | Edited Variable | An edited variable is one that has gone through an editing process (a process checking for consistency). Values of edited variables are almost always equal to values of the corresponding unedited variables. Data differ when a value is allocated or imputed by the processing system based on allocation rules specified in CPS or ATUS processing. Allocations are typically performed when the unedited variable contains a value of blank, "don't know," or "refused." An edited version of a variable exists only if that variable goes through an editing process. If there are no edits for a variable, then only an unedited version of that variable exists. |
| R | Recode | A recode is a variable calculated by the processing system from a combination of other variables on the file. For example, TRMJOCC1 is the major occupation code for the respondent's main job; this is not a response to a question but rather a variable that summarizes (or "groups") the more finely detailed occupation variable TEIO1OCD. (Note that variables with second and third characters of "RT" are summary variables.) |
| RT | Summary Variable | These variables summarize the amount of time respondents spent with other people or did selected activities. For example, TRTALONE gives the total amount of time the respondent spent alone on the diary day. Variables that summarize the amount of time respondents spent with other people rely on "who" code information and therefore do not include activities for which no "who" code information was collected, such as sleeping. |
| T | Topcode Flag | These variables indicate whether another variable has been topcoded, or given a maximum value. The three topcode variables on the ATUS interview data files all relate to earnings. |

Using these rules, variables can be more readily understood based on their names. For example, the variable TEAGE can be broken down as follows:

- The first character "T" indicates that this variable was collected or created through the ATUS interviews
- The second character "E" indicates that this variable went through an editing process
- The final part of the variable name, "AGE," is descriptive

Some questions asked in the ATUS interview allow for more than one response. For such multiple entry questions, there is a separate variable for each possible response. Each variable has the same descriptive name but a different (sequential) number. For example, respondents can provide up to six answers to the question "You said you have been trying to find work – how did you go about looking?" The variable names are TULKDK1, TULKDK2, TULKDK3, etc.

Not all ATUS variables are on the files. When there is an edited variable, the corresponding unedited variable is usually omitted from the files. This is typically done to protect the confidentiality of ATUS respondents as required by law. If an unedited variable is included on the files, then an edited version does not exist and the unedited version cannot be used to identify individual respondents. In addition, some variables available on the single-year data files are not available on the 2003-07 files as a way to keep file sizes manageable. These variables are listed in Appendices B, C, D and E.

Allocation Flags

The 2003-07 ATUS Interview files contain two allocation flags: TRHERNAL and TRWERNAL. These allocation flags were included because of the frequency with which earnings variables are allocated in the ATUS. All other allocation flags appear only on the single-year ATUS Interview files and *not* on the multi-year files. For more information on these allocation flags, please see the single-year Interview data dictionaries, available online at www.bls.gov/tus/dictionaries.htm.

Edited Universe

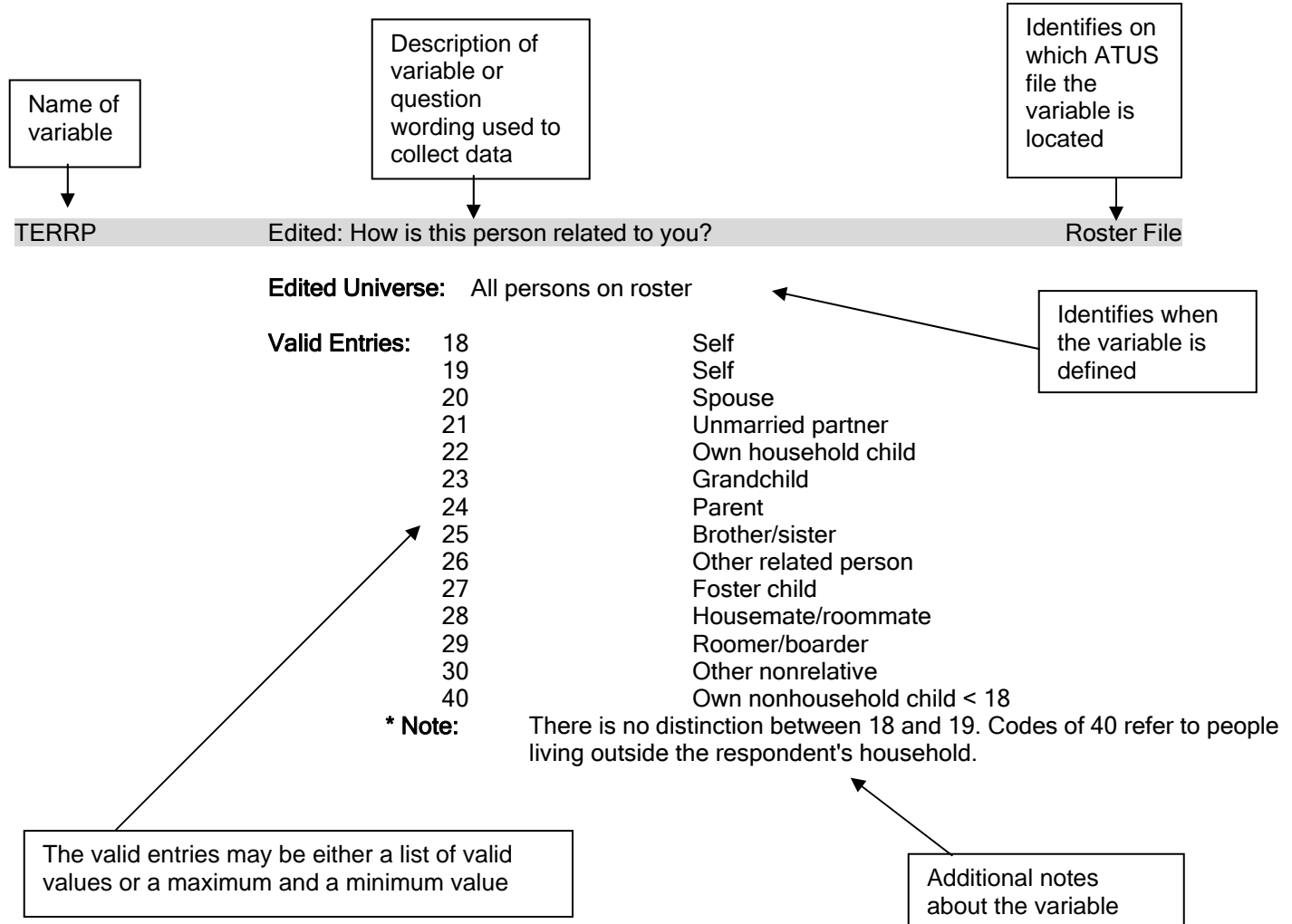
Edited variables and recodes are defined for certain universes, and these are listed in the data dictionary. For example, TEIO1OCD (occupation code) is only defined when the respondent is employed. Therefore, the universe for TEIO1OCD is TELFS = 1 or 2 (TELFSS is the labor force status of the respondent, and values of 1 or 2 indicate that the respondent is employed).

Certain variables might initially appear to be the same because their descriptions are very similar. These variables are different in that they were asked of different groups of survey respondents. For example, the variables TEERNH1O and TEERNH2 both have the same question text of "Excluding overtime pay, tips, and commissions, what is your hourly rate of pay on your main job?" The difference in these two variables has to do with which respondents were asked each question. This can be determined by looking at the edited universes. TEERNH1O was asked of respondents with TEERNPER = 1, or those who said it was easiest to report their earnings hourly. TEERNH2, on the other hand, was asked of respondents with TEERNRT = 1, or those who said they were paid hourly but reported their earnings another way.

Organization of the Data Dictionary

Variables are listed in the data dictionary in alphabetical order.

Below is a sample entry from the ATUS interview data dictionary:



Frequently Used Variables

The ATUS files have many variables and users may sometimes have difficulty determining which variables to use. A list of the most commonly used ATUS variables is available at www.bls.gov/tus/freqvariables.pdf.

Changes between years of ATUS data

Those using the multi-year ATUS data sets should be aware of changes to ATUS survey methods between years—such as new, discontinued, and changed variables—as well as differences in activity codes between years. For a list of these changes, see the document describing ATUS changes (www.bls.gov/tus/changes.pdf) and the document describing Activity Coding Lexicon changes (www.bls.gov/tus/lexiconchanges.pdf). Note that the multi-year files have their own Activity Coding Lexicon (www.bls.gov/tus/lexicon0307.pdf) that differs somewhat from the single-year lexicons.

Combining multiple years of ATUS Data

The method used to generate statistical weights (the variable TUFINLWGT) on the ATUS files changed each year from 2003 to 2006. There were no changes to the method used to generate TUFINLWGT in 2007. For ease of use, this multi-year data set provides statistical weights developed using the 2006 weighting method. The weighting variable has been named TUFNWGTP, and all other weighting variables (e.g. TU04FWGT and TU06FWGT) were removed from the multi-year files.

For more information about ATUS statistical weights, why researchers should use them, and details about how the ATUS weighting method changed, see the ATUS User's Guide (www.bls.gov/tus/atususersguide.pdf).

2003-07 ATUS Data Dictionary: Public ATUS Interview Data

| Name | Description | File |
|----------|--|------------------------------------|
| TEABRSN | Edited: what was the main reason you were absent from your job last week? | Respondent File |
| | Edited Universe: TELFS = 2 | |
| | Valid Entries: | |
| | 1 On layoff (temporary or indefinite) | |
| | 2 Slack work/business conditions | |
| | 3 Waiting for a new job to begin | |
| | 4 Vacation/personal days | |
| | 5 Own illness/injury/medical problems | |
| | 6 Childcare problems | |
| | 7 Other family/personal obligation | |
| | 8 Maternity/paternity leave | |
| | 9 Labor dispute | |
| | 10 Weather affected job | |
| | 11 School/training | |
| | 12 Civic/military duty | |
| | 13 Does not work in the business | |
| | 14 Other | |
| TEAGE | Edited: age | Roster File, Activity Summary File |
| | Edited Universe: All persons on roster | |
| | Valid Entries: 0 Min Value | |
| | 85 Max Value | |
| | * Note: For TUYEAR <= 2004, TEAGE is topcoded to 80. All those age 80 and above have TEAGE=80. | |
| | For TUYEAR >= 2005, TEAGE is topcoded to 85. All those age 80 through 84 have TEAGE = 80. Those age 85 or above have TEAGE = 85. | |
| TEERN | Edited: total weekly overtime earnings (2 implied decimals) | Respondent File |
| | Edited Universe: TEERNUOT = 1 and TEERNPER = 1 | |
| | Valid Entries: 0 Min Value | |
| | 288461 Max Value | |
| TEERNH10 | Edited: excluding overtime pay, tips, and commissions, what is your hourly rate of pay on your main job? (2 implied decimals) | Respondent File |
| | Edited Universe: TEERNPER = 1 | |
| | Valid Entries: 0 Min Value | |
| | 9999 Max Value | |
| TEERNH2 | Edited: excluding overtime pay, tips, and commissions, what is your hourly rate of pay on your main job? (2 implied decimals) | Respondent File |
| | Edited Universe: TEERNRT = 1 | |
| | Valid Entries: 0 Min Value | |
| | 9999 Max Value | |
| TEERNHRO | Edited: how many hours do you usually work per week at this rate? | Respondent File |
| | Edited Universe: TEERNH10 >= 0 | |

| Name | Description | File |
|----------|---|-----------------|
| | Valid Entries: 1 Min Value 99 Max Value | |
| TEERNHRY | Edited: hourly/non-hourly status | Respondent File |
| | Edited Universe: TELFS = 1 or 2 and TEIO1COW = 1 - 5 | |
| | Valid Entries: 1 Paid hourly 2 Not paid hourly | |
| TEERNPER | Edited: for your main job, what is the easiest way for you to report your total earnings before taxes or other deductions: hourly, weekly, annually, or some other way? | Respondent File |
| | Edited Universe: TELFS = 1 or 2 and TEIO1COW = 1 - 5 | |
| | Valid Entries: 1 Hourly 2 Weekly 3 Bi-weekly 4 Twice monthly 5 Monthly 6 Annually 7 Other | |
| TEERNRT | Edited: even though you told me it is easier to report your earnings another way, are you paid at an hourly rate on this job? | Respondent File |
| | Edited Universe: TEERNPER = 2 - 7 | |
| | Valid Entries: 1 Yes 2 No | |
| TEERNUOT | Edited: do you usually receive overtime pay, tips, or commissions at your main job? | Respondent File |
| | Edited Universe: TELFS = 1 or 2 and TEIO1COW = 1 - 5 | |
| | Valid Entries: 1 Yes 2 No | |
| TEERNWKP | Edited: how many weeks a year do you get paid? | Respondent File |
| | Edited Universe: TEERNPER = 6 | |
| | Valid Entries: 1 Min Value 52 Max Value | |
| TEHRFTPT | Edited: do you usually work more than 35 hours per week at your job(s)/family business? | Respondent File |
| | Edited Universe: TEHRUSL1 = -4 or TEHRUSL2 = -4 | |
| | Valid Entries: 1 Yes 2 No 3 Hours vary | |
| TEHRUSL1 | Edited: how many hours per week do you usually work at your main job? | Respondent File |
| | Edited Universe: TELFS = 1 or 2 | |
| | Valid Entries: 0 Min Value 999 Max Value | |
| | * Note: -4 (Hours vary) is also valid for TEHRUSL1 | |

| Name | Description | File |
|----------|---|--|
| TEHRUSL2 | Edited: how many hours per week do you usually work at your other job(s)? Edited Universe: TELFS = 1 or 2 and TEMJOT = 1 Valid Entries: 0 Min Value 999 Max Value * Note: -4 (Hours vary) is also valid for TEHRUSL2 | Respondent File |
| TEHRUSLT | Edited: total hours usually worked per week (sum of TEHRUSL1 and TEHRUSL2) Edited Universe: TELFS = 1 or 2 Valid Entries: 0 Min Value 999 Max Value * Note: -4 (Hours vary) is also valid for TEHRUSLT | Respondent File, Activity Summary File |
| TEIO1COW | Edited: individual class of worker code (main job) Edited Universe: TELFS = 1 or 2 Valid Entries: 1 Government, federal 2 Government, state 3 Government, local 4 Private, for profit 5 Private, nonprofit 6 Self-employed, incorporated 7 Self-employed, unincorporated 8 Without pay | Respondent File |
| TEIO1ICD | Edited: industry code (main job) Edited Universe: TELFS = 1 or 2 Valid Entries: 0 Min Value 9999 Max Value * Note: Refer to Appendix A for a list of industry codes | Respondent File |
| TEIO1OCD | Edited: occupation code (main job) Edited Universe: TELFS = 1 or 2 Valid Entries: 0 Min Value 9999 Max Value * Note: Refer to Appendix A for a list of occupation codes | Respondent File |
| TELAYAVL | Edited: could you have returned to work in the last seven days if you had been recalled? Edited Universe: TELFS = 3 Valid Entries: 1 Yes 2 No | Respondent File |
| TELAYLK | Edited: even though you expect to be called back to work, have you been looking for work during the last four weeks? Edited Universe: TELAYAVL = 1 or 2 Valid Entries: 1 Yes | Respondent File |

| Name | Description | File |
|---------|---|---|
| TELFS | <p>Valid Entries: 2 No</p> <p>Edited: labor force status</p> <p>Edited Universe: All respondents</p> <p>Valid Entries: 1 Employed - at work 2 Employed - absent 3 Unemployed - on layoff 4 Unemployed - looking 5 Not in labor force</p> | Respondent File, Activity Summary File |
| TELKAVL | <p>Edited: could you have started a job in the last seven days if one had been offered?</p> <p>Edited Universe: TELKM1 = 1 - 13</p> <p>Valid Entries: 1 Yes 2 No</p> | Respondent File |
| TELKM1 | <p>Edited: what are all of the things you have done to find work during the last 4 weeks? (first method)</p> <p>Edited Universe: TELFS = 4</p> <p>Valid Entries: 1 Contacted employer directly/interview 2 Contacted public employment agency 3 Contacted private employment agency 4 Contacted friends or relatives 5 Contacted school/university employment center 6 Sent out resumes/filled out applications 7 Checked union/professional registers 8 Placed or answered ads 9 Other active 10 Looked at ads 11 Attended job training programs/courses 12 Nothing 13 Other passive</p> <p>* Note: In order to research job search methods, users must combine all fields TELKM1, TULKM2 - TULKM6, TULKDK1 - TULKDK6, and TULKPS1 - TULKPS6</p> | Respondent File |
| TEMJOT | <p>Edited: in the last seven days did you have more than one job?</p> <p>Edited Universe: TELFS = 1 or 2</p> <p>Valid Entries: 1 Yes 2 No</p> | Respondent File, Activity Summary File |
| TERET1 | <p>Edited: do you currently want a job, either full or part time?</p> <p>Edited Universe: TELFS = 5 and (TURETOT = 1 or TUFABS = 3 or TUFWK = 3 or TULAY = 3) and TEAGE >= 50</p> <p>Valid Entries: 1 Yes or maybe/it depends 2 No 3 Has a job</p> | Respondent File |
| TERRP | <p>Edited: how is this person related to you?</p> | Roster File |

| Name | Description | File |
|-----------|---|--|
| | Edited Universe: All persons on roster Valid Entries: 18 Self 19 Self 20 Spouse 21 Unmarried partner 22 Own household child 23 Grandchild 24 Parent 25 Brother/sister 26 Other relative 27 Foster child 28 Housemate/roommate 29 Roomer/boarder 30 Other nonrelative 40 Own nonhousehold child < 18 * Note: There is no distinction between 18 and 19. Codes of 40 refer to people living outside the respondent's household. | |
| TESCHENR | Edited: are you enrolled in high school, college, or university? | Respondent File, Activity Summary File |
| | Edited Universe: Respondents aged 15 to 49 Valid Entries: 1 Yes 2 No | |
| TESCHFT | Edited: are you enrolled as a full-time or part-time student? | Respondent File |
| | Edited Universe: TESCHENR = 1 Valid Entries: 1 Full time 2 Part time | |
| TESCHLVL | Edited: would that be high school, college, or university? | Respondent File, Activity Summary File |
| | Edited Universe: TESCHENR = 1 Valid Entries: 1 High school 2 College or university | |
| TESEX | Edited: sex | Roster File, Activity Summary File |
| | Edited Universe: All persons on roster Valid Entries: 1 Male 2 Female | |
| TESPEMNOT | Edited: employment status of spouse or unmarried partner | Respondent File, Activity Summary File |
| | Edited Universe: TRSPPRES = 1 or 2 Valid Entries: 1 Employed 2 Not employed | |
| TESPUHRS | Edited: usual hours of work of spouse or unmarried partner | Respondent File |

| Name | Description | File | | | | | | | | | | | | | | | | | | | | | | | | | | | | | | | | | | | | | | | | | | | | | | | | | | | | |
|------------|--|---|---------------------------|---|------------------------|---|---------------------|---|-------------------|---|------------------|---|---------------|---|------------------|---|--------|---|-------------------------|----|---------|----|-------------|----|------------------------------------|----|---------------------------------------|----|---------|----|-----|----|--------------|----|---------|----|------------|----|------------------------|----|----------|----|------------------------------|----|------|----|-----------------|----|-------------|----|-------------------|----|------------------------------------|--|
| | <p>Edited Universe: TESPENPNOT = 1</p> <p>Valid Entries: 0 Min Value 99 Max Value</p> <p>* Note: -4 (Hours vary) is also valid for TESPUNHRS</p> | | | | | | | | | | | | | | | | | | | | | | | | | | | | | | | | | | | | | | | | | | | | | | | | | | | | | |
| TEWHERE | Edited: where were you during the activity? | Activity File | | | | | | | | | | | | | | | | | | | | | | | | | | | | | | | | | | | | | | | | | | | | | | | | | | | | |
| | <p>Edited Universe: All activities (except those noted below)</p> <p>Valid Entries:</p> <table border="0"> <tr><td>1</td><td>Respondent's home or yard</td></tr> <tr><td>2</td><td>Respondent's workplace</td></tr> <tr><td>3</td><td>Someone else's home</td></tr> <tr><td>4</td><td>Restaurant or bar</td></tr> <tr><td>5</td><td>Place of worship</td></tr> <tr><td>6</td><td>Grocery store</td></tr> <tr><td>7</td><td>Other store/mall</td></tr> <tr><td>8</td><td>School</td></tr> <tr><td>9</td><td>Outdoors away from home</td></tr> <tr><td>10</td><td>Library</td></tr> <tr><td>11</td><td>Other place</td></tr> <tr><td>12</td><td>Car, truck, or motorcycle (driver)</td></tr> <tr><td>13</td><td>Car, truck, or motorcycle (passenger)</td></tr> <tr><td>14</td><td>Walking</td></tr> <tr><td>15</td><td>Bus</td></tr> <tr><td>16</td><td>Subway/train</td></tr> <tr><td>17</td><td>Bicycle</td></tr> <tr><td>18</td><td>Boat/ferry</td></tr> <tr><td>19</td><td>Taxi/limousine service</td></tr> <tr><td>20</td><td>Airplane</td></tr> <tr><td>21</td><td>Other mode of transportation</td></tr> <tr><td>30</td><td>Bank</td></tr> <tr><td>31</td><td>Gym/health club</td></tr> <tr><td>32</td><td>Post Office</td></tr> <tr><td>89</td><td>Unspecified place</td></tr> <tr><td>99</td><td>Unspecified mode of transportation</td></tr> </table> <p>* Note: Values of 30, 31 and 32 for TEWHERE were introduced in October 2004 ATUS. Therefore, for [TUYEAR < 2004 OR (TUMONTH < 10 AND TUYEAR = 2004)] these values will not appear.</p> <p>TEWHERE is not collected for activities with activity codes of 0101xx, 0102xx, 0104xx, 500105, or 500106.</p> | 1 | Respondent's home or yard | 2 | Respondent's workplace | 3 | Someone else's home | 4 | Restaurant or bar | 5 | Place of worship | 6 | Grocery store | 7 | Other store/mall | 8 | School | 9 | Outdoors away from home | 10 | Library | 11 | Other place | 12 | Car, truck, or motorcycle (driver) | 13 | Car, truck, or motorcycle (passenger) | 14 | Walking | 15 | Bus | 16 | Subway/train | 17 | Bicycle | 18 | Boat/ferry | 19 | Taxi/limousine service | 20 | Airplane | 21 | Other mode of transportation | 30 | Bank | 31 | Gym/health club | 32 | Post Office | 89 | Unspecified place | 99 | Unspecified mode of transportation | |
| 1 | Respondent's home or yard | | | | | | | | | | | | | | | | | | | | | | | | | | | | | | | | | | | | | | | | | | | | | | | | | | | | | |
| 2 | Respondent's workplace | | | | | | | | | | | | | | | | | | | | | | | | | | | | | | | | | | | | | | | | | | | | | | | | | | | | | |
| 3 | Someone else's home | | | | | | | | | | | | | | | | | | | | | | | | | | | | | | | | | | | | | | | | | | | | | | | | | | | | | |
| 4 | Restaurant or bar | | | | | | | | | | | | | | | | | | | | | | | | | | | | | | | | | | | | | | | | | | | | | | | | | | | | | |
| 5 | Place of worship | | | | | | | | | | | | | | | | | | | | | | | | | | | | | | | | | | | | | | | | | | | | | | | | | | | | | |
| 6 | Grocery store | | | | | | | | | | | | | | | | | | | | | | | | | | | | | | | | | | | | | | | | | | | | | | | | | | | | | |
| 7 | Other store/mall | | | | | | | | | | | | | | | | | | | | | | | | | | | | | | | | | | | | | | | | | | | | | | | | | | | | | |
| 8 | School | | | | | | | | | | | | | | | | | | | | | | | | | | | | | | | | | | | | | | | | | | | | | | | | | | | | | |
| 9 | Outdoors away from home | | | | | | | | | | | | | | | | | | | | | | | | | | | | | | | | | | | | | | | | | | | | | | | | | | | | | |
| 10 | Library | | | | | | | | | | | | | | | | | | | | | | | | | | | | | | | | | | | | | | | | | | | | | | | | | | | | | |
| 11 | Other place | | | | | | | | | | | | | | | | | | | | | | | | | | | | | | | | | | | | | | | | | | | | | | | | | | | | | |
| 12 | Car, truck, or motorcycle (driver) | | | | | | | | | | | | | | | | | | | | | | | | | | | | | | | | | | | | | | | | | | | | | | | | | | | | | |
| 13 | Car, truck, or motorcycle (passenger) | | | | | | | | | | | | | | | | | | | | | | | | | | | | | | | | | | | | | | | | | | | | | | | | | | | | | |
| 14 | Walking | | | | | | | | | | | | | | | | | | | | | | | | | | | | | | | | | | | | | | | | | | | | | | | | | | | | | |
| 15 | Bus | | | | | | | | | | | | | | | | | | | | | | | | | | | | | | | | | | | | | | | | | | | | | | | | | | | | | |
| 16 | Subway/train | | | | | | | | | | | | | | | | | | | | | | | | | | | | | | | | | | | | | | | | | | | | | | | | | | | | | |
| 17 | Bicycle | | | | | | | | | | | | | | | | | | | | | | | | | | | | | | | | | | | | | | | | | | | | | | | | | | | | | |
| 18 | Boat/ferry | | | | | | | | | | | | | | | | | | | | | | | | | | | | | | | | | | | | | | | | | | | | | | | | | | | | | |
| 19 | Taxi/limousine service | | | | | | | | | | | | | | | | | | | | | | | | | | | | | | | | | | | | | | | | | | | | | | | | | | | | | |
| 20 | Airplane | | | | | | | | | | | | | | | | | | | | | | | | | | | | | | | | | | | | | | | | | | | | | | | | | | | | | |
| 21 | Other mode of transportation | | | | | | | | | | | | | | | | | | | | | | | | | | | | | | | | | | | | | | | | | | | | | | | | | | | | | |
| 30 | Bank | | | | | | | | | | | | | | | | | | | | | | | | | | | | | | | | | | | | | | | | | | | | | | | | | | | | | |
| 31 | Gym/health club | | | | | | | | | | | | | | | | | | | | | | | | | | | | | | | | | | | | | | | | | | | | | | | | | | | | | |
| 32 | Post Office | | | | | | | | | | | | | | | | | | | | | | | | | | | | | | | | | | | | | | | | | | | | | | | | | | | | | |
| 89 | Unspecified place | | | | | | | | | | | | | | | | | | | | | | | | | | | | | | | | | | | | | | | | | | | | | | | | | | | | | |
| 99 | Unspecified mode of transportation | | | | | | | | | | | | | | | | | | | | | | | | | | | | | | | | | | | | | | | | | | | | | | | | | | | | | |
| TR_03CC57 | Was a household or own non-household child < 13 in your care during this activity? | Activity File | | | | | | | | | | | | | | | | | | | | | | | | | | | | | | | | | | | | | | | | | | | | | | | | | | | | |
| | <p>Edited Universe: All activities</p> <p>Valid Entries: 1 At least one child < 13 was in respondent's care during activity</p> <p>* Note: This variable was discontinued in 2004 ATUS. Therefore, for [TUYEAR > 2003], there will be missing values of TR_03CC57. It was replaced by the component variables TUCC5, TUCC5B, and TUCC7.</p> | | | | | | | | | | | | | | | | | | | | | | | | | | | | | | | | | | | | | | | | | | | | | | | | | | | | | |
| TRCHILDNUM | Number of household children < 18 | Respondent File, Activity Summary File | | | | | | | | | | | | | | | | | | | | | | | | | | | | | | | | | | | | | | | | | | | | | | | | | | | | |

| Name | Description | File |
|----------|---|---|
| | Edited Universe: All respondents | |
| | Valid Entries: 0 Min Value 30 Max Value | |
| TRCODEP | Pooled six-digit activity code | Activity File |
| | * Note: See the 2003-07 Activity Coding Lexicon for activity definitions | |
| TRDPFTPT | Full time or part time employment status of respondent | Respondent File, Activity Summary File |
| | Edited Universe: TELFS = 1 or 2 | |
| | Valid Entries: 1 Full time 2 Part time | |
| TRDTIND1 | Detailed industry recode (main job) | Respondent File |
| | Edited Universe: TELFS = 1 or 2 | |
| | Valid Entries: 1 Min Value 51 Max Value | |
| | * Note: Detailed industry recode values are listed in Appendix A | |
| TRDTOCC1 | Detailed occupation recode (main job) | Respondent File |
| | Edited Universe: TELFS = 1 or 2 | |
| | Valid Entries: 1 Management occupations 2 Business and financial operations occupations 3 Computer and mathematical science occupations 4 Architecture and engineering occupations 5 Life, physical, and social science occupations 6 Community and social service occupations 7 Legal occupations 8 Education, training, and library occupations 9 Arts, design, entertainment, sports, and media occupations 10 Healthcare practitioner and technical occupations 11 Healthcare support occupations 12 Protective service occupations 13 Food preparation and serving related occupations 14 Building and grounds cleaning and maintenance occupations 15 Personal care and service occupations 16 Sales and related occupations 17 Office and administrative support occupations 18 Farming, fishing, and forestry occupations 19 Construction and extraction occupations 20 Installation, maintenance, and repair occupations 21 Production occupations 22 Transportation and material moving occupations | |
| TREMODR | Eating and Health Module respondent | Respondent File |
| | Edited Universe: All respondents | |
| | Valid Entries: 0 Did not respond to Eating and Health Module 1 Responded to Eating and Health Module | |

| Name | Description | File |
|-----------|---|---|
| | <p>* Note: The Eating and Health Module interview was conducted for TUYEAR=2006 and 2007. For TUYEAR > 2005, all respondents were selected to be interviewed for the Eating and Health Module. Values of -1 indicate that the individual did not complete an Eating and Health Module interview.</p> | |
| TRERNHLY | Hourly earnings (2 implied decimals) | Respondent File |
| | Edited Universe: TEERNHRY = 1 | |
| | <p>Valid Entries: 0 Min Value 9999 Max Value</p> | |
| | <p>* Note: This is the most frequently used hourly earnings variable in ATUS and is only defined for employed persons who say they work hourly and are not self-employed or without pay. This variable is subject to topcoding based on the entry in TEERNHRO such that TEERNHRO x TRERNHLY <= 2884.61; topcoding is indicated in TTHR.</p> | |
| TRERNUPD | Earnings update flag | Respondent File |
| | Edited Universe: TELFS = 1 or 2 and TEIO1COW = 1 - 5 | |
| | <p>Valid Entries: 0 Earnings carried forward from final CPS interview 1 Earnings updated in ATUS</p> | |
| TRERNWA | Weekly earnings (2 implied decimals) | Respondent File, Activity Summary File |
| | Edited Universe: TELFS = 1 or 2 and TEIO1COW = 1 - 5 | |
| | <p>Valid Entries: 0 Min Value 288461 Max Value</p> | |
| | <p>* Note: This is the most frequently used earnings variable in ATUS and is defined for all employed persons who are not self-employed or without pay. It is subject to topcoding (the maximum value cannot be greater than 2884.61); topcoding is indicated in TTOT, TTKW, and TTHR.</p> | |
| TRHERNAL | TRERNHLY: allocation flag | Respondent File |
| | Edited Universe: TEERNHRY = 1 | |
| | <p>Valid Entries: 0 TRERNHLY does not contain allocated information 1 TRERNHLY contains allocated information</p> | |
| TRHHCHILD | Presence of household children < 18 | Respondent File |
| | Edited Universe: All respondents | |
| | <p>Valid Entries: 1 Yes 2 No</p> | |
| TRHOLIDAY | Flag to indicate if diary day was a holiday | Respondent File, Activity Summary File |
| | Edited Universe: All respondents | |
| | <p>Valid Entries: 0 Diary day was not a holiday 1 Diary day was a holiday</p> | |
| | <p>* Note: New Year's Day, Easter, Memorial Day, the Fourth of July, Labor Day, Thanksgiving Day, and Christmas Day are identified as holidays.</p> | |
| TRIMIND1 | Intermediate industry recode (main job) | Respondent File |

| Name | Description | File |
|----------|---|-----------------|
| | Edited Universe: TELFS = 1 or 2 | |
| | Valid Entries: | |
| | 1 Agriculture, forestry, fishing, and hunting | |
| | 2 Mining | |
| | 3 Construction | |
| | 4 Manufacturing - durable goods | |
| | 5 Manufacturing - non-durable goods | |
| | 6 Wholesale trade | |
| | 7 Retail trade | |
| | 8 Transportation and warehousing | |
| | 9 Utilities | |
| | 10 Information | |
| | 11 Finance and insurance | |
| | 12 Real estate and rental and leasing | |
| | 13 Professional and technical services | |
| | 14 Management, administrative and waste management services | |
| | 15 Educational services | |
| | 16 Health care and social services | |
| | 17 Arts, entertainment, and recreation | |
| | 18 Accommodation and food services | |
| | 19 Private households | |
| | 20 Other services, except private households | |
| | 21 Public administration | |
| TRMJIND1 | Major industry recode (main job) | Respondent File |
| | Edited Universe: TELFS = 1 or 2 | |
| | Valid Entries: | |
| | 1 Agriculture, forestry, fishing, and hunting | |
| | 2 Mining | |
| | 3 Construction | |
| | 4 Manufacturing | |
| | 5 Wholesale and retail trade | |
| | 6 Transportation and utilities | |
| | 7 Information | |
| | 8 Financial activities | |
| | 9 Professional and business services | |
| | 10 Educational and health services | |
| | 11 Leisure and hospitality | |
| | 12 Other services | |
| | 13 Public administration | |
| TRMJOCC1 | Major occupation recode (main job) | Respondent File |
| | Edited Universe: TELFS = 1 or 2 | |
| | Valid Entries: | |
| | 1 Management, business, and financial occupations | |
| | 2 Professional and related occupations | |
| | 3 Service occupations | |
| | 4 Sales and related occupations | |
| | 5 Office and administrative support occupations | |
| | 6 Farming, fishing, and forestry occupations | |
| | 7 Construction and extraction occupations | |
| | 8 Installation, maintenance, and repair occupations | |
| | 9 Production occupations | |

| Name | Description | File |
|------------|---|---|
| | Edited Universe: TELFS = 1 or 2 | |
| | Valid Entries: 10 Transportation and material moving occupations | |
| TRMJOCGR | Major occupation category (main job) | Respondent File |
| | Edited Universe: TELFS = 1 or 2 | |
| | Valid Entries: 1 Management, professional, and related occupations | |
| | 2 Service occupations | |
| | 3 Sales and office occupations | |
| | 4 Farming, fishing, and forestry occupations | |
| | 5 Construction and maintenance occupations | |
| | 6 Production, transportation, and material moving occupations | |
| TRHHCHILD | Presence of own non-household child < 18 | Respondent File |
| | Edited Universe: All respondents | |
| | Valid Entries: 1 Yes | |
| | 2 No | |
| TRNUMHOU | Number of people living in respondent's household | Respondent File |
| | Edited Universe: All respondents | |
| | Valid Entries: 1 Min Value | |
| | 30 Max Value | |
| TROHHCHILD | Presence of own household children < 18 | Respondent File |
| | Edited Universe: All respondents | |
| | Valid Entries: 1 Yes | |
| | 2 No | |
| TRSPFTPT | Full time or part time employment status of spouse or unmarried partner | Respondent File, Activity Summary File |
| | Edited Universe: TESPEMPNOT = 1 | |
| | Valid Entries: 1 Full time | |
| | 2 Part time | |
| | 3 Hours vary | |
| TRSPPRES | Presence of the respondent's spouse or unmarried partner in the household | Respondent File, Activity Summary File |
| | Edited Universe: All respondents | |
| | Valid Entries: 1 Spouse present | |
| | 2 Unmarried partner present | |
| | 3 No spouse or unmarried partner present | |
| TRTALONE | Total time respondent spent alone (in minutes) | Respondent File |
| | Edited Universe: All respondents | |
| | Valid Entries: 0 Min Value | |
| | 1440 Max Value | |
| | * Note: This variable is computed using TUWHO_CODE information; all activities for which who information is not collected, such as sleeping, are omitted from the calculation. | |

| Name | Description | File |
|-------------|--|------------------------|
| TRTCC | Total time spent during diary day providing secondary childcare for household and own nonhousehold children < 13 (in minutes) | Respondent File |
| | Edited Universe: All respondents | |
| | Valid Entries: 0 1440 | Min Value Max Value |
| | * Note: TRTCC is the sum of all values of TRTCC_LN for each TUCASEID | |
| TRTCC_LN | Total time spent during activity providing secondary child care for household and own nonhousehold children < 13 (in minutes) | Activity File |
| | Edited Universe: All activities for respondents who have at least one household or own nonhousehold child < 13 | |
| | Valid Entries: 0 1440 | Min Value Max Value |
| | * Note: For TUYEAR=2003, TRTCC_LN is calculated using TR_03CC57. It does not include activities with TRTIER2P=0101, 0301, 0302, 0303, or with TRCODEP=180381. | |
| | For TUYEAR > = 2004, TRTCC_LN is the maximum for the activity of the following variables: TRTOHH_LN, TRTNOHH_LN, and TRTONHH_LN. | |
| | TRTCC_LN is not calculated for activities when no household child < 13 was awake. It is also not calculated for households that do not have at least one household or nonhousehold child < 13. | |
| TRTCCC | Total time respondent spent with customers, clients, and coworkers (in minutes) | Respondent File |
| | Edited Universe: All respondents | |
| | Valid Entries: 0 1440 | Min Value Max Value |
| | * Note: This variable is computed using TUWHO_CODE information; all activities for which who information is not collected, such as working, are omitted from the calculation. | |
| TRTCCTOT | Total time spent during diary day providing secondary childcare for all children < 13 (in minutes) | Respondent File |
| | Edited Universe: All respondents | |
| | Valid Entries: 0 1440 | Min Value Max Value |
| | * Note: For TUYEAR=2003, TRTCCTOT is the sum of the maximum of TRTCC_LN and TRTCOC_LN for all activities for each TUCASEID. | |
| | For TUYEAR > = 2004, TRTCCTOT is the sum of all values of TRTCCTOT_LN for each TUCASEID | |
| TRTCCTOT_LN | Total time spent during activity providing secondary childcare for all children < 13 (in minutes) | Activity File |
| | Edited Universe: All activities | |
| | Valid Entries: 0 1440 | Min Value Max Value |
| | * Note: TRTCCTOT_LN is the maximum for the activity of the following variables: TRTOHH_LN, TRTNOHH_LN, TRTONHH_LN, and TRTCOC_LN. | |
| | This variable was introduced in 2004 ATUS. Therefore, it will have missing values for records with [TUYEAR = 2003]. | |

| Name | Description | File |
|-----------|---|------------------------|
| TRTCHILD | Total time respondent spent with household or nonhousehold children < 18 (in minutes) | Respondent File |
| | Edited Universe: All respondents | |
| | Valid Entries: 0 1440 | Min Value Max Value |
| | * Note: This variable is computed using TUWHO_CODE information; all activities for which who information is not collected, such as sleeping, are omitted from the calculation. | |
| TRTCOC | Total time spent during diary day providing secondary childcare for nonown, nonhousehold children < 13 (in minutes) | Respondent File |
| | Edited Universe: All respondents | |
| | Valid Entries: 0 1440 | Min Value Max Value |
| | * Note: TRTCOC is the sum of all TRTCOC_LN for each TUCASEID. For TUYEAR > 2003, TRTCOC is slightly different due to changes in TRTCOC_LN. | |
| TRTCOC_LN | Total time spent during activity providing secondary child care for nonown, nonhousehold children <13 (in minutes) | Activity File |
| | Edited Universe: All activities | |
| | Valid Entries: 0 1440 | Min Value Max Value |
| | * Note: TRTCOC_LN is calculated using TUCC8. It does not include activities with TRTIER2P=0101, 0301, 0302, 0303, 0401, 0402, 0403 or activities with TRCODEP=180381, 180481. | |
| TRTFAMILY | Total time respondent spent with family members (in minutes) | Respondent File |
| | Edited Universe: All respondents | |
| | Valid Entries: 0 1440 | Min Value Max Value |
| | * Note: This variable includes time spent with nonhousehold children. For TUYEAR=2003, this variable differs from the single-year file; on the 2003 ATUS Respondent file this variable excludes time spent with nonhousehold children. This variable is computed using TUWHO_CODE information; all activities for which who information is not collected, such as sleeping, are omitted from the calculation. | |
| TRTFRIEND | Total time respondent spent with friends (in minutes) | Respondent File |
| | Edited Universe: All respondents | |
| | Valid Entries: 0 1440 | Min Value Max Value |
| | * Note: This variable is computed using TUWHO_CODE information; all activities for which who information is not collected, such as sleeping, are omitted from the calculation | |
| TRTHH | Total time spent during diary day providing secondary childcare for household children < 13 (in minutes) | Respondent File |
| | Edited Universe: All respondents | |
| | Valid Entries: 0 1440 | Min Value Max Value |

| Name | Description | File |
|-------------|--|-----------------|
| TRTHH_LN | <p>* Note: TRTHH was introduced in 2004 ATUS. Therefore, it is calculated only where TUYEAR > 2003. It is the sum of all values of TRTHH_LN for each TUCASEID.</p> <p>Total time spent during activity providing secondary childcare for household children < 13 (in minutes)</p> <p>Edited Universe: All activities for respondents with at least one household child < 13</p> <p>Valid Entries: 0 Min Value 1440 Max Value</p> <p>* Note: TRTHH_LN is calculated only where TUYEAR >= 2004. It is the maximum for the activity of the following variables: TRTOHH_LN and TRTNOHH_LN.</p> | Activity File |
| TRTHHFAMILY | <p>Total time respondent spent with household family members (in minutes)</p> <p>Edited Universe: All respondents</p> <p>Valid Entries: 0 Min Value 1440 Max Value</p> <p>* Note: This variable is computed using TUWHO_CODE information; all activities for which who information is not collected, such as sleeping, are omitted from the calculation.</p> | Respondent File |
| TRTIER1P | <p>Pooled lexicon tier 1: 1st and 2nd digits of 6-digit activity code</p> <p>Valid Entries: 01 Min Value 50 Max Value</p> <p>* Note: Valid activity codes are listed in the 2003-07 Coding Lexicon. TRCODEP provides the full six-digit activity codes for each activity occurring on the Activity file.</p> | Activity File |
| TRTIER2P | <p>Pooled lexicon tiers 1 and 2: 1st four digits of 6-digit activity code</p> <p>* Note: Valid activity codes are listed in the 2003-07 Coding Lexicon. TRCODEP provides the full six-digit activity codes for each activity occurring on the Activity file.</p> | Activity File |
| TRTNOCHILD | <p>Total time respondent spent with nonown children < 18 (in minutes)</p> <p>Edited Universe: All respondents</p> <p>Valid Entries: 0 Min Value 1440 Max Value</p> <p>* Note: This variable is computed using TUWHO_CODE information; all activities for which who information is not collected, such as sleeping, are omitted from the calculation</p> | Respondent File |
| TRTNOHH | <p>Total time spent during diary day providing secondary childcare for nonown household children < 13 (in minutes)</p> <p>Edited Universe: All respondents</p> <p>Valid Entries: 0 Min Value 1440 Max Value</p> <p>* Note: TRTNOHH was introduced in 2004 ATUS. Therefore, it is calculated only when TUYEAR > 2003. It is the sum of all values of TRTNOHH_LN for each TUCASEID.</p> | Respondent File |
| TRTNOHH_LN | <p>Total time spent during activity providing secondary childcare for nonown household children < 13 (in minutes)</p> <p>Edited Universe: All activities for respondents with at least one nonown household child < 13</p> <p>Valid Entries: 0 Min Value 1440 Max Value</p> <p>* Note: TRTNOHH_LN is calculated when TUYEAR > = 2004. It is calculated using TUCC5B. It does not include activities where TRTIER2P= 0101, 0301, 0302, 0303, and where TRCODEP= 180381. It does not include any activity or part of any activity in which no household child was awake (determined by TUCC2 and TUCC4).</p> | Activity File |

| Name | Description | File |
|-------------|---|------------------------|
| TRTO | Total time spent during diary day providing secondary childcare for own children < 13 (in minutes) | Respondent File |
| | Edited Universe: All respondents | |
| | Valid Entries: 0 1440 | Min Value Max Value |
| | * Note: TRTO was introduced in 2004 ATUS. Therefore, it is calculated when TUYEAR > 2003. It is the sum of all values of TRTO_LN for each TUCASEID. | |
| TRTO_LN | Total time spent during activity providing secondary childcare for own children < 13 (in minutes) | Activity File |
| | Edited Universe: All activities for respondents with at least one own child < 13 | |
| | Valid Entries: 0 1440 | Min Value Max Value |
| | * Note: TRTO_LN is calculated when TUYEAR >= 2004. It is the maximum for the activity of the following variables: TRTOHH_LN and TRTONHH_LN. | |
| TRTOHH | Total time spent during diary day providing secondary childcare for own household children < 13 (in minutes) | Respondent File |
| | Edited Universe: All respondents | |
| | Valid Entries: 0 1440 | Min Value Max Value |
| | * Note: TRTOHH was introduced in 2004 ATUS. Therefore, it is calculated when TUYEAR > = 2004. It is the sum of all values of TRTOHH_LN for each TUCASEID. | |
| TRTOHH_LN | Total time spent during activity providing secondary childcare for own household children < 13 (in minutes) | Activity File |
| | Edited Universe: All activities for respondents with at least one own household child < 13 | |
| | Valid Entries: 0 1440 | Min Value Max Value |
| | * Note: TRTOHH_LN is calculated when TUYEAR >= 2004. It is calculated using TUCC5. It does not include activities with TRTIER2P=0101, 0301, 0302, 0303, or with TRCODEP=180381, 180302, or 180303. It does not include any activity or part of any activity in which no household child was awake (determined by TUCC2 and TUCC4). | |
| TRTOHHCHILD | Total time respondent spent with own household children < 18 (in minutes) | Respondent File |
| | Edited Universe: All respondents | |
| | Valid Entries: 0 1440 | Min Value Max Value |
| | * Note: This variable is computed using TUWHO_CODE information; all activities for which who information is not collected, such as sleeping, are omitted from the calculation | |
| TRTONHH | Total time spent during diary day providing secondary childcare for own nonhousehold children < 13 (in minutes) | Respondent File |
| | Edited Universe: All respondents | |
| | Valid Entries: 0 1440 | Min Value Max Value |
| | * Note: TRTONHH was introduced in 2004 ATUS. Therefore, it is calculated when TUYEAR > 2003. It is the sum of all values of TRTONHH_LN for each TUCASEID. | |
| TRTONHH_LN | Total time spent during activity providing secondary childcare for own nonhousehold children < 13 (in minutes) | Activity File |

| Name | Description | File |
|--------------|---|--|
| | Edited Universe: All activities for respondents with at least one own nonhousehold child < 13 | |
| | Valid Entries: 0 1440 | Min Value Max Value |
| | * Note: TRTONHH_LN is calculated when TUYEAR >= 2004. It is calculated using TUCC7. It does not include activities with TRTIER2P of 0101, 0301, 0302, 0303, 0401, 0402, 0403, and activities with TRCODEP of 180381 or 180481. | |
| TRTONHHCHILD | Total time respondent spent with own nonhousehold children < 18 (in minutes) | Respondent File |
| | Edited Universe: All respondents | |
| | Valid Entries: 0 1440 | Min Value Max Value |
| | * Note: This variable is computed using TUWHO_CODE information; all activities for which who information is not collected, such as sleeping, are omitted from the calculation | |
| TRTSPONLY | Total time respondent spent with spouse only (in minutes) | Respondent File |
| | Edited Universe: All respondents | |
| | Valid Entries: 0 1440 | Min Value Max Value |
| | * Note: This variable is computed using TUWHO_CODE information; all activities for which who information is not collected, such as sleeping, are omitted from the calculation | |
| TRTSPOUSE | Total time respondent spent with spouse (others may be present) (in minutes) | Respondent File |
| | Edited Universe: All respondents | |
| | Valid Entries: 0 1440 | Min Value Max Value |
| | * Note: This variable is computed using TUWHO_CODE information; all activities for which who information is not collected, such as sleeping, are omitted from the calculation | |
| TRTUNMPART | Total time respondent spent with unmarried partner (others may be present) (in minutes) | Respondent File |
| | Edited Universe: All respondents | |
| | Valid Entries: 0 1440 | Min Value Max Value |
| | * Note: This variable is computed using TUWHO_CODE information; all activities for which who information is not collected, such as sleeping, are omitted from the calculation | |
| TRWERNAL | TRERNWA: allocation flag | Respondent File |
| | Edited Universe: TELFS = 1 or 2 and TEIO1COW = 1 - 5 | |
| | Valid Entries: 0 1 | TRERNWA does not contain allocated information TRERNWA contains allocated information |
| TRWHONA | Who information not asked for activity | Who File |
| | Edited Universe: All activities | |
| | Valid Entries: 0 1 | TUWHO_CODE asked TUWHO_CODE not asked |
| TRYHHCHILD | Age of youngest household child < 18 | Respondent File, Activity Summary File |

| Name | Description | File |
|--------------|--|--|
| | Edited Universe: TRHHCHILD = 1 | |
| | Valid Entries: 0 17 | Min Value Max Value |
| TTHR | Hourly pay topcode flag | Respondent File |
| | Valid Entries: 0 Not topcoded 1 Topcoded | |
| | * Note: Indicates topcoding of hourly pay in earnings variables | |
| TTOT | Overtime amount topcode flag | Respondent File |
| | Valid Entries: 0 Not topcoded 1 Topcoded | |
| | * Note: Indicates topcoding of overtime pay in earnings variables | |
| TTWK | Weekly earnings topcode flag | Respondent File |
| | Valid Entries: 0 Not topcoded 1 Topcoded | |
| | * Note: Indicates topcoding of weekly pay in earnings variables | |
| TUABSOT | In the last seven days, did you have a job either full or part time? | Respondent File |
| | Valid Entries: 1 Yes 2 No 3 Retired 4 Disabled 5 Unable to work | |
| TUACTDUR | Duration of activity in minutes (last activity not truncated at 4:00 a.m.) | Activity File |
| | Valid Entries: 1 9999 | Min Value Max Value |
| TUACTDUR24 | Duration of activity in minutes (last activity truncated at 4:00 a.m.) | Activity File |
| | Valid Entries: 1 1440 | Min Value Max Value |
| TUACTIVITY_N | Activity line number | Activity File, Who File, EH Activity File |
| | Valid Entries: 1 91 | Min Value Max Value |
| TUBUS | Does anyone in the household own a business or a farm? | Respondent File |
| | Valid Entries: 1 Yes 2 No | |
| TUBUS1 | In the last seven days, did you do any unpaid work in the family business or farm? | Respondent File |
| | Valid Entries: 1 Yes 2 No | |
| TUBUS2OT | Do you receive payments or profits from the business? | Respondent File |
| | Valid Entries: 1 Yes 2 No | |
| TUBUSL1 | TULINENO of farm or business owner (first owner) | Respondent File |
| | Valid Entries: 0 30 | Min Value Max Value |
| TUBUSL2 | TULINENO of farm or business owner (second owner) | Respondent File |

| Name | Description | File |
|----------|--|------------------------|
| | Valid Entries: 0 30 | Min Value Max Value |
| TUBUSL3 | TULINENO of farm or business owner (third owner) | Respondent File |
| | Valid Entries: 0 30 | Min Value Max Value |
| TUBUSL4 | TULINENO of farm or business owner (fourth owner) | Respondent File |
| | Valid Entries: 0 30 | Min Value Max Value |
| TUCASEID | ATUS Case ID (14-digit identifier) | All Files |
| TUCC2 | Time first household child < 13 woke up | Respondent File |
| | Valid Entries: 00:00:00 24:00:00 | Min Value Max Value |
| TUCC4 | Time last household child < 13 went to bed | Respondent File |
| | Valid Entries: 00:00:00 24:00:00 | Min Value Max Value |
| TUCC5 | Was at least one of your own household children < 13 in your care during this activity? | Activity File |
| | Valid Entries: 0 No 1 Yes 97 No additional activities involved childcare | |
| | * Note: This variable was introduced in 2004 ATUS. It will only have values for TUYEAR >= 2004. TUR_03CC57 contains this information for TUYEAR=2003. | |
| TUCC5B | Was at least one of your non-own household children < 13 in your care during this activity? | Activity File |
| | Valid Entries: 0 No 1 Yes 97 No additional activities involved childcare | |
| | * Note: This variable was introduced in 2004 ATUS. It will only have values for TUYEAR >= 2004. TUR_03CC57 contains this information for TUYEAR=2003. | |
| TUCC7 | Was at least one of your own non-household children < 13 in your care during this activity? | Activity File |
| | Valid Entries: 0 No 1 Yes 97 No additional activities involved childcare | |
| | * Note: This variable was introduced in 2004 ATUS. It will only have values for TUYEAR >= 2004. TUR_03CC57 contains this information for TUYEAR=2003. | |
| TUCC8 | Other than household or own non-household children < 13, was there a child 0-12 in your care during this activity? | Activity File |
| | Valid Entries: 0 No 1 Yes 97 No additional activities involved childcare | |
| TUCC9 | Are the non-own, non-household children you cared for in TUCC8 related to you? | Respondent File |
| | Valid Entries: 1 Yes 2 No 3 Some are, some are not | |
| TUCUMDUR | Cumulative duration of activity lengths in minutes; last activity not truncated at 4:00am or 1440 minutes (cumulative total of TUACTION for each TUCASEID) | Activity File |

| Name | Description | File |
|-------------|---|---|
| | Valid Entries: 1 9999 | Min Value Max Value |
| TUCUMDUR24 | Cumulative duration of activity lengths in minutes; last activity truncated at 4:00am or 1440 minutes (cumulative total of TUACTION24 for each TUCASEID) | Activity File |
| | Valid Entries: 1 1440 | Min Value Max Value |
| TUDIARYDATE | Date of diary day (date about which the respondent was interviewed) | Respondent File |
| | Valid Entries: 20030101 20071231 | Min Value Max Value |
| | * Note: TUDIARYDATE is in YYYYMMDD format | |
| TUDIARYDAY | Day of the week of diary day (day of the week about which the respondent was interviewed) | Respondent File, Activity Summary File |
| | Valid Entries: 1 Sunday 2 Monday 3 Tuesday 4 Wednesday 5 Thursday 6 Friday 7 Saturday | |
| TUDIS | Last time we spoke to someone in this household you were reported to have a disability. Does your disability prevent you from doing any kind of work for the next six months? | Respondent File |
| | Valid Entries: 1 Yes 2 No 3 Did not have a disability last time | |
| TUDIS1 | Does your disability prevent you from accepting any kind of work during the next six months? | Respondent File |
| | Valid Entries: 1 Yes 2 No | |
| TUDIS2 | Do you have a disability that prevents you from accepting any kind of work during the next six months? | Respondent File |
| | Valid Entries: 1 Yes 2 No | |
| TUFNWGTP | ATUS final weight | Respondent File, Activity Summary File |
| | Valid Entries: 0 9999999999999999 | Min Value Max Value |
| | * Note: This weight uses the 2006 weighting methodology and is comparable for all years. For more information see the ATUS User's Guide. | |
| TUFWK | In the last seven days did you do any work for pay or profit? | Respondent File |
| | Valid Entries: 1 Yes 2 No 3 Retired 4 Disabled 5 Unable to work | |
| TUIO1MFG | Is this business or organization mainly manufacturing, retail trade, wholesale trade, or something else? (main job) | Respondent File |
| | Valid Entries: 1 Manufacturing | |

| Name | Description | File |
|----------|---|---|
| | Valid Entries: 2 Retail trade 3 Wholesale trade 4 Something else * Note: For TUYEAR < 2005, TUIO1MFG is defined only for respondents whose industry information was updated in the ATUS interview. For TUYEAR > = 2005, TUIO1MFG is defined for respondents whose industry information was updated in the ATUS interview; it is populated with CPS values of PUIO1MFG for respondents whose industry information was not updated in the ATUS interview. | |
| TUIODP1 | Last time we spoke to someone in this household, you were reported to work for (employer's name). Do you still work for (employer's name)? (main job) | Respondent File |
| | Valid Entries: 1 Yes 2 No | |
| TUIODP2 | Have the usual activities and duties of your job changed since (month of CPS interview)? (main job) | Respondent File |
| | Valid Entries: 1 Yes 2 No | |
| TUIODP3 | Last time we spoke to someone in this household, you were reported as (occupation) and your usual duties were (activities). Is this an accurate description of your current job? (main job) | Respondent File |
| | Valid Entries: 1 Yes 2 No | |
| TULAY | During the last seven days were you on layoff from your job? | Respondent File |
| | Valid Entries: 1 Yes 2 No 3 Retired 4 Disabled 5 Unable to work | |
| TULAY6M | Have you been given any indication that you will be recalled to work within the next 6 months? | Respondent File |
| | Valid Entries: 1 Yes 2 No | |
| TULAYAVR | Why could you not have started a job in the last week? | Respondent File |
| | Valid Entries: 1 Own temporary illness 2 Going to school 3 Other | |
| TULAYDT | Has your employer given you a date to return to work? (to layoff job) | Respondent File |
| | Valid Entries: 1 Yes 2 No | |
| TULINENO | ATUS person line number | ATUS-CPS File, Respondent File, Roster File, Who File |
| | Valid Entries: 1 Min Value 30 Max Value | |
| | * Note: The person selected to be interviewed for ATUS is always TULINENO = 1 | |
| TULK | Have you been doing anything to find work during the last four weeks? | Respondent File |
| | Valid Entries: 1 Yes 2 No | |

| Name | Description | File |
|---------|---|-----------------|
| | Valid Entries: 3 Retired 4 Disabled 5 Unable to work | |
| TULKAVR | Why could you not have started a job last week? | Respondent File |
| | Valid Entries: 1 Waiting for new job to begin 2 Own temporary illness 3 Going to school 4 Other | |
| TULKDK1 | You said you have been trying to find work. How did you go about looking? (first method) | Respondent File |
| | Valid Entries: 1 Contacted employer directly/interview 2 Contacted public employment agency 3 Contacted private employment agency 4 Contacted friends or relatives 5 Contacted school/university employment center 6 Sent out resumes/filled out applications 7 Checked union/professional registers 8 Placed or answered ads 9 Other active 10 Looked at ads 11 Attended job training programs/courses 12 Nothing 13 Other passive * Note: In order to research job search methods, users must combine all fields TELKM1, TULKM2 - TULKM6, TULKDK1 - TULKDK6, and TULKPS1 - TULKPS6 | |
| TULKDK2 | TULKDK1 text: (second method) | Respondent File |
| | Valid Entries: 1 Contacted employer directly/interview 2 Contacted public employment agency 3 Contacted private employment agency 4 Contacted friends or relatives 5 Contacted school/university employment center 6 Sent out resumes/filled out applications 7 Checked union/professional registers 8 Placed or answered ads 9 Other active 10 Looked at ads 11 Attended job training programs/courses 13 Other passive 97 No additional job search activities * Note: In order to research job search methods, users must combine all fields TELKM1, TULKM2 - TULKM6, TULKDK1 - TULKDK6, and TULKPS1 - TULKPS6 | |
| TULKDK3 | TULKDK1 text: (third method) | Respondent File |
| | Valid Entries: 1 Min Value 97 Max Value * Note: See valid values for TULKDK2 | |
| TULKDK4 | TULKDK1 text: (fourth method) | Respondent File |
| | Valid Entries: 1 Min Value 97 Max Value * Note: See valid values for TULKDK2 | |

| Name | Description | File | | | | | | | | | | | | | | | | | | | | | | | | | | | | |
|---------|---|-----------------|---------------------------------------|----|------------------------------------|---|-------------------------------------|---|--------------------------------|---|---|---|--|---|--------------------------------------|---|------------------------|---|--------------|----|---------------|----|--|----|---------------|----|-------------------------------------|----|-------------------------------|--|
| TULKM2 | What are all of the things you have done to find work during the last 4 weeks? (second method) | Respondent File | | | | | | | | | | | | | | | | | | | | | | | | | | | | |
| | Valid Entries: <table border="0"> <tr><td>1</td><td>Contacted employer directly/interview</td></tr> <tr><td>2</td><td>Contacted public employment agency</td></tr> <tr><td>3</td><td>Contacted private employment agency</td></tr> <tr><td>4</td><td>Contacted friends or relatives</td></tr> <tr><td>5</td><td>Contacted school/university employment center</td></tr> <tr><td>6</td><td>Sent out resumes/filled out applications</td></tr> <tr><td>7</td><td>Checked union/professional registers</td></tr> <tr><td>8</td><td>Placed or answered ads</td></tr> <tr><td>9</td><td>Other active</td></tr> <tr><td>10</td><td>Looked at ads</td></tr> <tr><td>11</td><td>Attended job training programs/courses</td></tr> <tr><td>13</td><td>Other passive</td></tr> <tr><td>97</td><td>No additional job search activities</td></tr> </table> | 1 | Contacted employer directly/interview | 2 | Contacted public employment agency | 3 | Contacted private employment agency | 4 | Contacted friends or relatives | 5 | Contacted school/university employment center | 6 | Sent out resumes/filled out applications | 7 | Checked union/professional registers | 8 | Placed or answered ads | 9 | Other active | 10 | Looked at ads | 11 | Attended job training programs/courses | 13 | Other passive | 97 | No additional job search activities | | | |
| 1 | Contacted employer directly/interview | | | | | | | | | | | | | | | | | | | | | | | | | | | | | |
| 2 | Contacted public employment agency | | | | | | | | | | | | | | | | | | | | | | | | | | | | | |
| 3 | Contacted private employment agency | | | | | | | | | | | | | | | | | | | | | | | | | | | | | |
| 4 | Contacted friends or relatives | | | | | | | | | | | | | | | | | | | | | | | | | | | | | |
| 5 | Contacted school/university employment center | | | | | | | | | | | | | | | | | | | | | | | | | | | | | |
| 6 | Sent out resumes/filled out applications | | | | | | | | | | | | | | | | | | | | | | | | | | | | | |
| 7 | Checked union/professional registers | | | | | | | | | | | | | | | | | | | | | | | | | | | | | |
| 8 | Placed or answered ads | | | | | | | | | | | | | | | | | | | | | | | | | | | | | |
| 9 | Other active | | | | | | | | | | | | | | | | | | | | | | | | | | | | | |
| 10 | Looked at ads | | | | | | | | | | | | | | | | | | | | | | | | | | | | | |
| 11 | Attended job training programs/courses | | | | | | | | | | | | | | | | | | | | | | | | | | | | | |
| 13 | Other passive | | | | | | | | | | | | | | | | | | | | | | | | | | | | | |
| 97 | No additional job search activities | | | | | | | | | | | | | | | | | | | | | | | | | | | | | |
| | * Note: In order to research job search methods, users must combine all fields TELKM1, TULKM2 - TULKM6, TULKDK1 - TULKDK6, and TULKPS1 - TULKPS6 | | | | | | | | | | | | | | | | | | | | | | | | | | | | | |
| TULKM3 | TULKM2 text: (third method) | Respondent File | | | | | | | | | | | | | | | | | | | | | | | | | | | | |
| | Valid Entries: <table border="0"> <tr><td>1</td><td>Min Value</td></tr> <tr><td>97</td><td>Max Value</td></tr> </table> | 1 | Min Value | 97 | Max Value | | | | | | | | | | | | | | | | | | | | | | | | | |
| 1 | Min Value | | | | | | | | | | | | | | | | | | | | | | | | | | | | | |
| 97 | Max Value | | | | | | | | | | | | | | | | | | | | | | | | | | | | | |
| | * Note: See valid values for TULKM2 | | | | | | | | | | | | | | | | | | | | | | | | | | | | | |
| TULKM4 | TULKM2 text: (fourth method) | Respondent File | | | | | | | | | | | | | | | | | | | | | | | | | | | | |
| | Valid Entries: <table border="0"> <tr><td>1</td><td>Min Value</td></tr> <tr><td>97</td><td>Max Value</td></tr> </table> | 1 | Min Value | 97 | Max Value | | | | | | | | | | | | | | | | | | | | | | | | | |
| 1 | Min Value | | | | | | | | | | | | | | | | | | | | | | | | | | | | | |
| 97 | Max Value | | | | | | | | | | | | | | | | | | | | | | | | | | | | | |
| | * Note: See valid values for TULKM2 | | | | | | | | | | | | | | | | | | | | | | | | | | | | | |
| TULKM5 | TULKM2 text: (fifth method) | Respondent File | | | | | | | | | | | | | | | | | | | | | | | | | | | | |
| | Valid Entries: <table border="0"> <tr><td>1</td><td>Min Value</td></tr> <tr><td>97</td><td>Max Value</td></tr> </table> | 1 | Min Value | 97 | Max Value | | | | | | | | | | | | | | | | | | | | | | | | | |
| 1 | Min Value | | | | | | | | | | | | | | | | | | | | | | | | | | | | | |
| 97 | Max Value | | | | | | | | | | | | | | | | | | | | | | | | | | | | | |
| | * Note: See valid values for TULKM2 | | | | | | | | | | | | | | | | | | | | | | | | | | | | | |
| TULKM6 | TULKM2 text: (sixth method) | Respondent File | | | | | | | | | | | | | | | | | | | | | | | | | | | | |
| | Valid Entries: <table border="0"> <tr><td>1</td><td>Min Value</td></tr> <tr><td>97</td><td>Max Value</td></tr> </table> | 1 | Min Value | 97 | Max Value | | | | | | | | | | | | | | | | | | | | | | | | | |
| 1 | Min Value | | | | | | | | | | | | | | | | | | | | | | | | | | | | | |
| 97 | Max Value | | | | | | | | | | | | | | | | | | | | | | | | | | | | | |
| | * Note: See valid values for TULKM2 | | | | | | | | | | | | | | | | | | | | | | | | | | | | | |
| TULKPS1 | Can you tell me more about what you did to search for work? (first method) | Respondent File | | | | | | | | | | | | | | | | | | | | | | | | | | | | |
| | Valid Entries: <table border="0"> <tr><td>1</td><td>Contacted employer directly/interview</td></tr> <tr><td>2</td><td>Contacted public employment agency</td></tr> <tr><td>3</td><td>Contacted private employment agency</td></tr> <tr><td>4</td><td>Contacted friends or relatives</td></tr> <tr><td>5</td><td>Contacted school/university employment center</td></tr> <tr><td>6</td><td>Sent out resumes/filled out applications</td></tr> <tr><td>7</td><td>Checked union/professional registers</td></tr> <tr><td>8</td><td>Placed or answered ads</td></tr> <tr><td>9</td><td>Other active</td></tr> <tr><td>10</td><td>Looked at ads</td></tr> <tr><td>11</td><td>Attended job training programs/courses</td></tr> <tr><td>12</td><td>Nothing</td></tr> <tr><td>13</td><td>Other passive</td></tr> <tr><td>97</td><td>No more job search activities</td></tr> </table> | 1 | Contacted employer directly/interview | 2 | Contacted public employment agency | 3 | Contacted private employment agency | 4 | Contacted friends or relatives | 5 | Contacted school/university employment center | 6 | Sent out resumes/filled out applications | 7 | Checked union/professional registers | 8 | Placed or answered ads | 9 | Other active | 10 | Looked at ads | 11 | Attended job training programs/courses | 12 | Nothing | 13 | Other passive | 97 | No more job search activities | |
| 1 | Contacted employer directly/interview | | | | | | | | | | | | | | | | | | | | | | | | | | | | | |
| 2 | Contacted public employment agency | | | | | | | | | | | | | | | | | | | | | | | | | | | | | |
| 3 | Contacted private employment agency | | | | | | | | | | | | | | | | | | | | | | | | | | | | | |
| 4 | Contacted friends or relatives | | | | | | | | | | | | | | | | | | | | | | | | | | | | | |
| 5 | Contacted school/university employment center | | | | | | | | | | | | | | | | | | | | | | | | | | | | | |
| 6 | Sent out resumes/filled out applications | | | | | | | | | | | | | | | | | | | | | | | | | | | | | |
| 7 | Checked union/professional registers | | | | | | | | | | | | | | | | | | | | | | | | | | | | | |
| 8 | Placed or answered ads | | | | | | | | | | | | | | | | | | | | | | | | | | | | | |
| 9 | Other active | | | | | | | | | | | | | | | | | | | | | | | | | | | | | |
| 10 | Looked at ads | | | | | | | | | | | | | | | | | | | | | | | | | | | | | |
| 11 | Attended job training programs/courses | | | | | | | | | | | | | | | | | | | | | | | | | | | | | |
| 12 | Nothing | | | | | | | | | | | | | | | | | | | | | | | | | | | | | |
| 13 | Other passive | | | | | | | | | | | | | | | | | | | | | | | | | | | | | |
| 97 | No more job search activities | | | | | | | | | | | | | | | | | | | | | | | | | | | | | |

| Name | Description | File |
|----------|---|---|
| | * Note: In order to research job search methods, users must combine all fields TELKM1, TULKM2 - TULKM6, TULKDK1 - TULKDK6, and TULKPS1 - TULKPS6 | |
| TULKPS2 | TULKPS1 text: (second method) | Respondent File |
| | Valid Entries: | |
| | 1 | Contacted employer directly/interview |
| | 2 | Contacted public employment agency |
| | 3 | Contacted private employment agency |
| | 4 | Contacted friends or relatives |
| | 5 | Contacted school/university employment center |
| | 6 | Sent out resumes/filled out applications |
| | 7 | Checked union/professional registers |
| | 8 | Placed or answered ads |
| | 9 | Other active |
| | 10 | Looked at ads |
| | 11 | Attended job training programs/courses |
| | 13 | Other passive |
| | 97 | No additional job search activities |
| | * Note: In order to research job search methods, users must combine all fields TELKM1, TULKM2 - TULKM6, TULKDK1 - TULKDK6, and TULKPS1 - TULKPS6 | |
| TULKPS3 | TULKPS1 text: (third method) | Respondent File |
| | Valid Entries: | |
| | 1 | Min Value |
| | 97 | Max Value |
| | * Note: See valid values for TULKPS2 | |
| TULKPS4 | TULKPS1 text: (fourth method) | Respondent File |
| | Valid Entries: | |
| | 1 | Min Value |
| | 97 | Max Value |
| | * Note: See valid values for TULKPS2 | |
| TUMONTH | Month of diary day (month of day about which ATUS respondent was interviewed) | Respondent File |
| | Valid Entries: | |
| | 1 | Min Value |
| | 12 | Max Value |
| TURETOT | The last time we spoke to someone in this household you were reported to be retired. Are you still retired? | Respondent File |
| | Valid Entries: | |
| | 1 | Yes |
| | 2 | No |
| | 3 | Was not retired last time |
| TUSPABS | In the last seven days, did your spouse or unmarried partner have a job either full or part time? | Respondent File |
| | Valid Entries: | |
| | 1 | Yes |
| | 2 | No |
| | 3 | Retired |
| | 4 | Disabled |
| | 5 | Unable to work |
| TUSPUSFT | Does your spouse or unmarried partner usually work 35 hours or more per week? | Respondent File |
| | Valid Entries: | |
| | 1 | Yes |
| | 2 | No |
| | 3 | Hours vary |
| | 4 | No longer has a job |
| TUSPWK | In the last seven days, did your spouse or unmarried partner do any work for pay or profit? | Respondent File |

| Name | Description | File |
|------------|---|-----------------|
| | Valid Entries: 1 Yes 2 No 3 Retired 4 Disabled 5 Unable to work | |
| TUSTARTTIM | Activity start time | Activity File |
| | Valid Entries: 00:00:00 Min Value 24:00:00 Max Value | |
| TUSTOPTIME | Activity stop time | Activity File |
| | Valid Entries: 00:00:00 Min Value 24:00:00 Max Value | |
| TUWHO_CODE | Who was in the room with you / Who accompanied you? | Who File |
| | Valid Entries: 18 Alone 19 Alone 20 Spouse 21 Unmarried partner 22 Own household child 23 Grandchild 24 Parent 25 Brother/sister 26 Other related person 27 Foster child 28 Housemate/roommate 29 Roomer/boarder 30 Other nonrelative 40 Own nonhousehold child < 18 51 Parents (not living in household) 52 Other nonhousehold family members < 18 53 Other nonhousehold family members 18 and older (including parents-in-law) 54 Friends 55 Co-workers/colleagues/clients 56 Neighbors/acquaintances 57 Other nonhousehold children < 18 58 Other nonhousehold adults 18 and older | |
| | * Note: Not collected for activities with activity codes of 0101xx, 0102xx, 0104xx, 0501xx, 500105, or 500106. There is no distinction between 18 and 19. All codes of 40 or greater refer to people living outside of the respondent's household. | |
| TUYEAR | Year of diary day (year of day about which respondent was interviewed) | Respondent File |
| | Valid Entries: 2003 Min Value 2007 Max Value | |

APPENDIX A

Detailed Industry Code (TRDTIND1)

| TRDTIND1 | Description | TEIO1ICD |
|----------|---|-----------------|
| 1 | Agriculture | 0170-0180, 0290 |
| 2 | Forestry, logging, fishing, hunting, and trapping | 0190-0280 |
| 3 | Mining | 0370-0490 |
| 4 | Construction | 770 |
| 5 | Nonmetallic mineral product manufacturing | 2470-2590 |
| 6 | Primary metals and fabricated metal products | 2670-2990 |
| 7 | Machinery manufacturing | 3070-3290 |
| 8 | Computer and electronic product manufacturing | 3360-3390 |
| 9 | Electrical equipment, appliance manufacturing | 3470, 3490 |
| 10 | Transportation equipment manufacturing | 3570-3690 |
| 11 | Wood product manufacturing | 3770-3870 |
| 12 | Furniture and fixtures manufacturing | 3890 |
| 13 | Miscellaneous and not specified manufacturing | 3960-3990 |
| 14 | Food manufacturing | 1070-1290 |
| 15 | Beverage and tobacco product manufacturing | 1370, 1390 |
| 16 | Textile, apparel, and leather manufacturing | 1470-1790 |
| 17 | Paper manufacturing and printing | 1870-1990 |
| 18 | Petroleum and coal products manufacturing | 2070, 2090 |
| 19 | Chemical manufacturing | 2170-2290 |
| 20 | Plastics and rubber products manufacturing | 2370-2390 |
| 21 | Wholesale trade | 4070-4590 |
| 22 | Retail trade | 4670-5790 |
| 23 | Transportation and warehousing | 6070-6390 |
| 24 | Utilities | 0570-0690 |
| 25 | Publishing industries (except internet) | 6470-6490 |
| 26 | Motion picture and sound recording industries | 6570, 6590 |
| 27 | Broadcasting (except internet) | 6670 |
| 28 | Internet publishing and broadcasting | 6675 |
| 29 | Telecommunications | 6680, 6690 |
| 30 | Internet service providers and data processing services | 6692, 6695 |
| 31 | Other information services | 6770, 6780 |
| 32 | Finance | 6870-6970 |
| 33 | Insurance | 6990 |
| 34 | Real estate | 7070 |
| 35 | Rental and leasing services | 7080-7190 |
| 36 | Professional, scientific, and technical services | 7270-7490 |
| 37 | Management of companies and enterprises | 7570 |
| 38 | Administrative and support services | 7580-7780 |
| 39 | Waste management and remediation services | 7790 |
| 40 | Educational services | 7860-7890 |
| 41 | Hospitals | 8190 |

| | | |
|----|---|-----------------------|
| 42 | Health care services, except hospitals | 7970-8180, 8270, 8290 |
| 43 | Social assistance | 8370-8470 |
| 44 | Arts, entertainment, and recreation | 8560-8590 |
| 45 | Traveler accommodation | 8660, 8670 |
| 46 | Food services and drinking places | 8680, 8690 |
| 47 | Repair and maintenance | 8770-8890 |
| 48 | Personal and laundry services | 8970-9090 |
| 49 | Membership associations and organizations | 9160-9190 |
| 50 | Private households | 9290 |
| 51 | Public administration | 9370-9590 |

Industry Codes (TEIO1ICD)

Available at <http://www.bls.gov/tus/census02iocodes.pdf>

Occupation Codes (TEIO1OCD)

Available at <http://www.bls.gov/tus/census02iocodes.pdf>

Appendix B:
Variables on the 2003-07 ATUS Interview files that do not appear on the single-year ATUS Interview files

The 2003-07 ATUS files include additional variables that are not found on the single-year ATUS files. Appendix B provides a list of variables appearing on the multi-year data files, and *not* on the single-year ATUS files. It also indicates on which multi-year file you can find these variables.

Table B-1
Variables appearing on the 2003-07 ATUS files, but not on single-year ATUS files

| Variable name | Description of variable | Activity File | Activity Summary File | Roster | Respondent | Who |
|---------------|--|---------------|-----------------------|--------|------------|-----|
| TRCODEP | Multi-year six digit activity code | X | | | | |
| TRTIER2P | Pooled lexicon tiers 1 and 2: First four digits of multi-year six-digit activity code. | X | | | | |
| TRTIER1P | Pooled lexicon tier 1: First and second digits of multi-year six-digit activity code. | X | | | | |
| TUFNWGTP | ATUS weight corresponding to 2006 weighting method | | X | | X | |

Appendix C:
Variables on the single-year ATUS Activity files that do not appear on the 2003-07 ATUS Activity file

The 2003-07 ATUS Activity file includes most, but not all, of the variables available on the single-year ATUS Activity data files. Appendix C provides a list of variables that appear on single-year Activity files, but do *not* appear on the 2003-07 ATUS Activity file. It also indicates where you can find variables not included on the 2003-07 ATUS Activity data file. For example, an "X" in the column titled "2003 ATUS Activity file" indicates that, while the variable does not appear on the 2003-07 ATUS Activity file, it does appear on the 2003 ATUS Activity file. For more information on the variables listed below, please see the single-year data dictionaries, available online at www.bls.gov/tus/dictionaries.htm.

Table C-1
Variables *not* appearing on the 2003-07 ATUS Activity file, but appearing on single-year ATUS Activity files

| Variable name | Description of variable | 2003 ATUS Activity file | 2003 ATUS Activity file | 2005 ATUS Activity file | 2006 ATUS Activity file | 2007 ATUS Activity file |
|--|---|-------------------------|-------------------------|-------------------------|-------------------------|-------------------------|
| An "X" indicates the ATUS Activity file on which the variable appears. | | | | | | |
| TUTIER1CODE | Lexicon Tier 1: 1st and 2nd digits of 6-digit activity code | X | X | X | X | X |
| TUTIER2CODE | Lexicon Tier 2: 3rd and 4th digits of 6-digit activity code | X | X | X | X | X |
| TUTIER3CODE | Lexicon Tier 3: 5th and 6th digits of 6-digit activity code | X | X | X | X | X |
| TXWHERE | TEWHERE: allocation flag | X | X | X | X | X |
| TRCODE | Six-digit activity code | | | | | X |
| TRTIER2 | First and second activity tiers | | | | | X |

Appendix D:
Variables on the single-year ATUS Respondent files that do not appear on the 2003-07 ATUS Respondent File

The 2003-07 ATUS Respondent file includes most, but not all, of the variables available on the single-year ATUS Respondent data files. Appendix D provides a list of variables that appear on the single-year files, but *not* on the 2003-07 ATUS Respondent file. It also indicates where you can find variables not included on the 2003-07 ATUS Respondent data file. For example, an “X” in the column titled “2003 ATUS Respondent file” indicates that, while the variable does not appear on the 2003-07 ATUS Respondent file, it does appear on the 2003 ATUS Respondent file. For more information on the variables listed below, please see the single-year data dictionaries, available online at www.bls.gov/tus/dictionaries.htm.

Table D-1
Variables not appearing on the 2003-07 ATUS Respondent file, but appearing on single-year ATUS Respondent files

| Variable name | Description of variable | ATUS 2003 Respondent file | ATUS 2004 Respondent file | ATUS 2005 Respondent file | ATUS 2006 Respondent file | ATUS 2007 Respondent file |
|---------------|---|---------------------------|---------------------------|---------------------------|---------------------------|---------------------------|
| TRHERNAL | TRERNHLY: allocation flag | X | X | X | X | X |
| TTHR | Hourly pay topcode flag | X | X | X | X | X |
| TTOT | Overtime amount topcode flag | X | X | X | X | X |
| TTWK | Weekly earnings topcode flag | X | X | X | X | X |
| TU04FWGT | ATUS final weight based on 2004 weighting method | X | | | | |
| TU06FWGT | ATUS final weight based on 2006 weighting method | X | X | X | | |
| TUBNCHWGT | ATUS benchmark weight | X | | | | |
| TUCC5B_CK | Reason respondent did not report secondary childcare activities for nonown household children | | | X | X | X |
| TUCC5_CK | Reason respondent did not report secondary childcare activities for own household children | | | X | X | X |
| TUERN2 | Weekly overtime earnings | X | X | X | X | X |
| TUERNH1C | What is your hourly rate of pay on this job, excluding overtime pay, tips, or commissions? | X | X | X | X | X |
| TULKDK5 | TULKDK1 text: (fifth method) | X | X | X | X | X |
| TULKDK6 | TULKDK1 text: (sixth method) | X | X | X | X | X |
| TULKPS5 | TULKPS1 text: (fifth method) | X | X | X | X | X |

Table D-1
Variables *not* appearing on the 2003-07 ATUS Respondent file, but appearing on single-year ATUS Respondent files, cont.

| Variable name | Description of variable | ATUS 2003 Respondent file | ATUS 2004 Respondent file | ATUS 2005 Respondent file | ATUS 2006 Respondent file | ATUS 2007 Respondent file |
|---------------|------------------------------|---------------------------|---------------------------|---------------------------|---------------------------|---------------------------|
| TULKPS6 | TULKPS1 text: (sixth method) | X | X | X | X | X |
| TXABSRSN | TEABSRSN: allocation flag | X | X | X | X | X |
| TXERN | TEERN: allocation flag | X | X | X | X | X |
| TXERNH1O | TEERNH1O: allocation flag | X | X | X | X | X |
| TXERNH2 | TEERNH2: allocation flag | X | X | X | X | X |
| TXERNHRO | TEERNHRO: allocation flag | X | X | X | X | X |
| TXERNHRY | TEERNHRY: allocation flag | X | X | X | X | X |
| TXERNPER | TEERNPER: allocation flag | X | X | X | X | X |
| TXERNRT | TEERNRT: allocation flag | X | X | X | X | X |
| TXERNUOT | TEERNUOT: allocation flag | X | X | X | X | X |
| TXERNWKP | TEERNWKP: allocation flag | X | X | X | X | X |
| TXHRFTPT | TEHRFTPT: allocation flag | X | X | X | X | X |
| TXHRUSL1 | TEHRUSL1: allocation flag | X | X | X | X | X |
| TXHRUSL2 | TEHRUSL2: allocation flag | X | X | X | X | X |
| TXHRUSLT | TEHRUSLT: allocation flag | X | X | X | X | X |
| TXIO1COW | TEIO1COW: allocation flag | X | X | X | X | X |
| TXIO1ICD | TEIO1ICD: allocation flag | X | X | X | X | X |
| TXIO1OCD | TEIO1OCD: allocation flag | X | X | X | X | X |
| TXLAYAVL | TELAYAVL: allocation flag | X | X | X | X | X |
| TXLAYLK | TELAYLK: allocation flag | X | X | X | X | X |
| TXLFS | TELFS: allocation flag | X | X | X | X | X |
| TXLKAVL | TELKAVL: allocation flag | X | X | X | X | X |
| TXLKM1 | TELKM1: allocation flag | X | X | X | X | X |
| TXMJOT | TEMJOT: allocation flag | X | X | X | X | X |
| TXRET1 | TERET1: allocation flag | X | X | X | X | X |
| TXSCHENR | TESCHENR: allocation flag | X | X | X | X | X |
| TXSCHFT | TESCHFT: allocation flag | X | X | X | X | X |

Table D-1
Variables *not* appearing on the 2003-07 ATUS Respondent file, but appearing on single-year ATUS Respondent files, cont.

| Variable name | Description of variable | ATUS 2003 Respondent file | ATUS 2004 Respondent file | ATUS 2005 Respondent file | ATUS 2006 Respondent file | ATUS 2007 Respondent file |
|---------------|---|---------------------------|---------------------------|---------------------------|---------------------------|---------------------------|
| TXSCHLVL | TESCHLVL: allocation flag | X | X | X | X | X |
| TXSPEMPNOT | TESPEMPNOT: allocation flag | X | X | X | X | X |
| TXSPUHRHS | TESPUHRHS: allocation flag | X | X | X | X | X |
| TXTCC | TRTCC_LN and TRTCC: allocation flag | X | X | X | X | X |
| TXCCTOT | TRCCTOT_LN and TRCCTOT: allocation flag | | X | X | X | X |
| TXCOC | TRCOC_LN and TRCOC: allocation flag | X | X | X | X | X |
| TXTHH | TRTHH_LN and TRTHH: allocation flag | | X | X | X | X |
| TXTNOHH | TRTNOHH_LN and TRTNOHH: allocation flag | | X | X | X | X |
| TXTO | TRTO_LN and TRTO: allocation flag | | X | X | X | X |
| TXTOHH | TRTOHH_LN and TRTOHH: allocation flag | | X | X | X | X |
| TXTONHH | TRTONHH_LN and TRTONHH: allocation flag | | X | X | X | X |

**Appendix E:
Variables on the single-year ATUS Roster files that do not appear on the 2003-07 ATUS Roster File**

The 2003-07 ATUS Roster file includes most, but not all, of the variables available on the single-year ATUS Roster data files. Appendix E provides a list of variables that appear on the single-year ATUS Roster files, but do *not* appear on the 2003-07 ATUS Roster file. It also indicates where you can find variables not included on the 2003-07 ATUS Roster data file. For example, an “X” in the column titled “2003 ATUS Roster file” indicates that, while the variable does *not* appear on the 2003-07 ATUS Roster file, it does appear on the 2003 ATUS Roster file. For more information on the variables listed below, please see the single-year data dictionaries, available online at www.bls.gov/tus/dictionaries.htm.

**Table E-1
Variables not appearing on the 2003-07 ATUS Roster file, but appearing on single-year ATUS Roster files**

| Variable name | Description of variable | 2003 ATUS Roster file | 2004 ATUS Roster file | 2005 ATUS Roster file | 2006 ATUS Roster file | 2007 ATUS Roster file |
|--|---------------------------------|-----------------------|-----------------------|-----------------------|-----------------------|-----------------------|
| An “X” indicates the ATUS Roster file on which the variable appears. | | | | | | |
| TURRP | Relationship to ATUS respondent | X | X | | | |
| TXAGE | TEAGE: allocation flag | X | X | X | X | X |
| TXRRP | TERRP: allocation flag | X | X | X | X | X |
| TXSEX | TESEX: allocation flag | X | X | X | X | X |