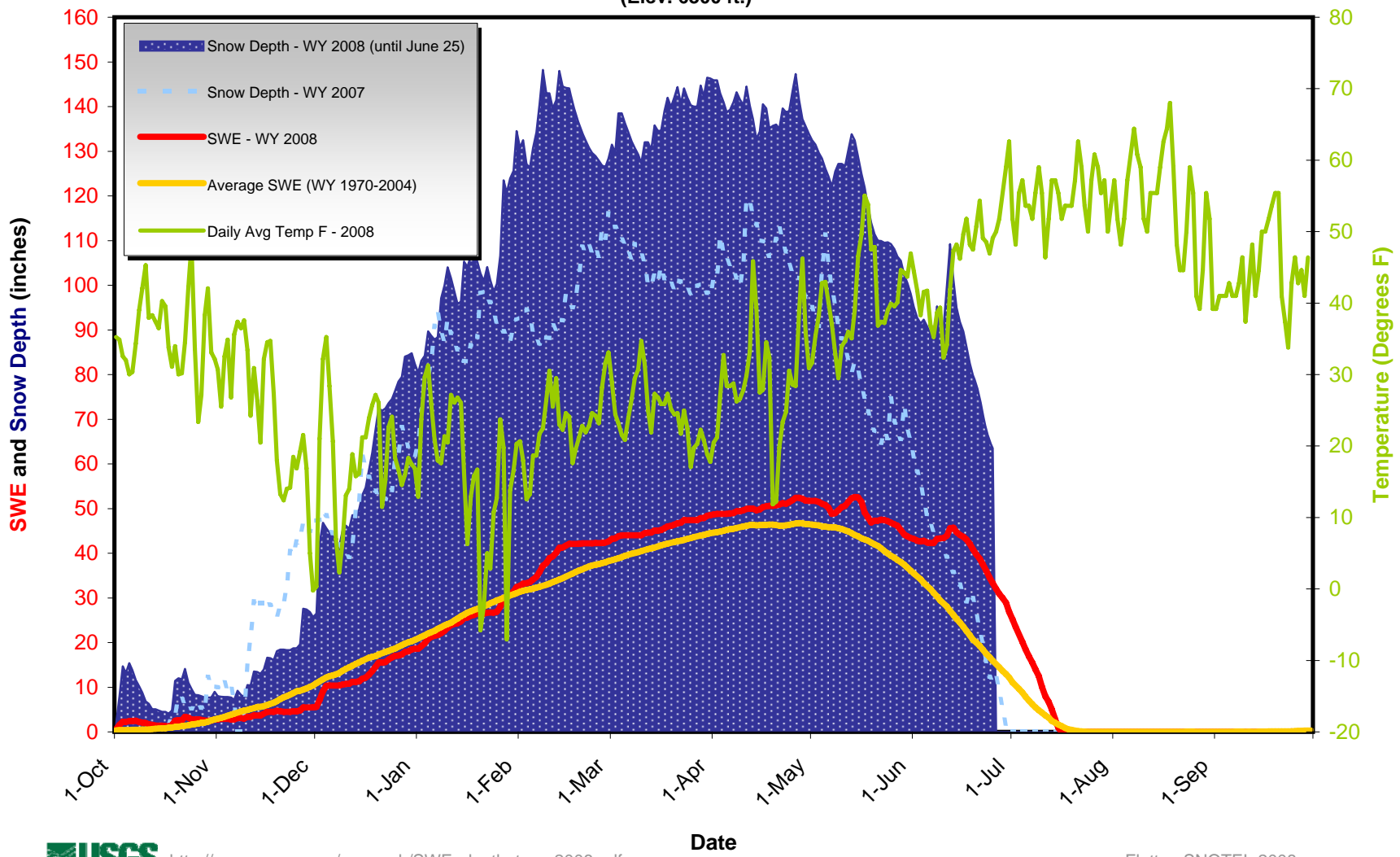


SWE, Snow Depth & Average Daily Temperature Water Year 2008 at Flattop Mtn. SNOTEL (Elev. 6300 ft.)



http://nrmcs.usgs.gov/research/SWE_depth_temp2008.pdf

Flattop SNOTEL 2008

Snow Water Equivalent (SWE) at Flattop Mtn.

elevation 6300 ft.

