



Logging into GFDL via SSH using PuTTY

Background

NOAA/GFDL allows registered users secure access to the site/resources via *SSH*. GFDL recommends and supports the *PuTTY* client-side tool for remote access through *daisy*, GFDL's *ssh* login host. Remember that *daisy* is only a gateway and provides no tools to do work on it. From *daisy*, the only thing users can do is connect to another host inside GFDL. Note that while *telnet* is still supported as a legacy service, *SSH* should be used to connect to another linux workstation.

NOAA/GFDL allows registered users access to the site/resources through *SSH*. PuTTY is a free implementation of *SSH* for the Windows platform, along with an *xterm* emulator. PuTTY is the supported tool at GFDL, but any *SSHv2* client should work.

Once logged in to an internal linux workstation, a user can work from within the *SSH* terminal to obtain a full-function *XWindow* environment. The directions below provide information on starting up and configuring PuTTY.

To obtain authorization to log in remotely, please submit the Remote Access User Agreement Form which can be found at <http://www.gfdl.noaa.gov/internal/index.html>.

QuickStart

For experienced *SSH* users, the steps are:

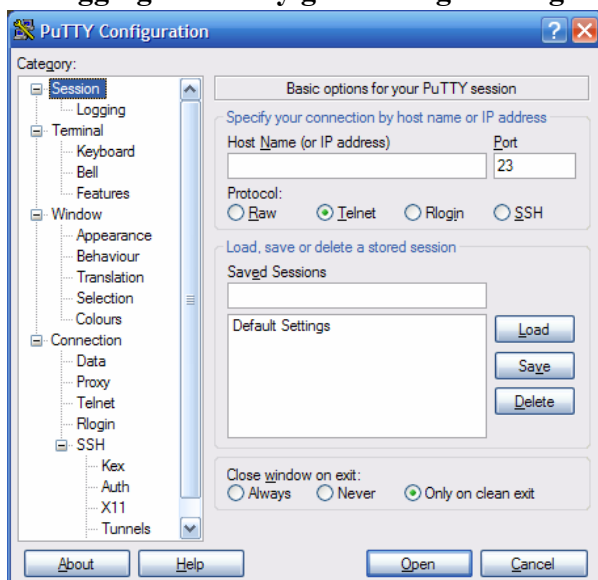
- *ssh* to *daisy.gfdl.noaa.gov*; your login name is your internal GFDL username; your password requires a CRYPTOCard
- From there, follow the menu and log in to an internal linux workstation

Downloads

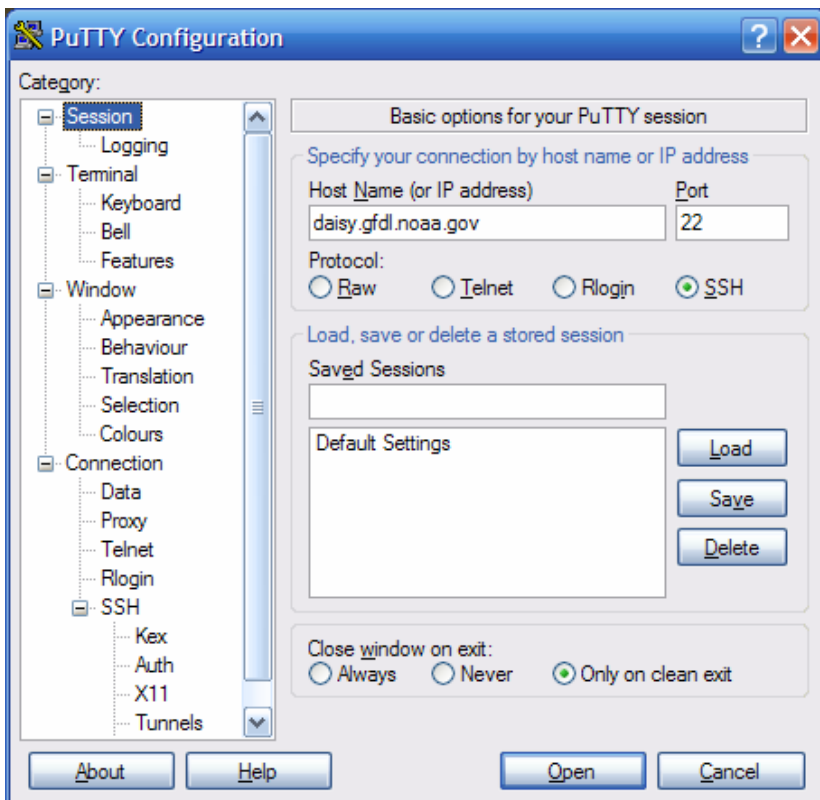
PuTTY (Release 0.58) can be found at: <http://www.putty.nl/download.html>

Detailed Instructions

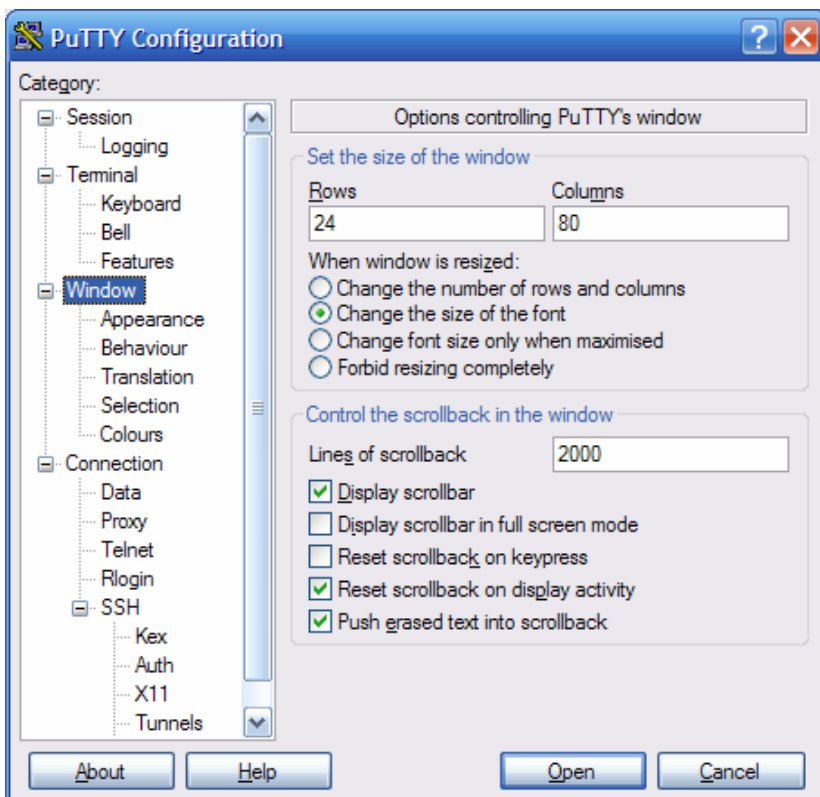
1. Logging into *daisy.gfdl.noaa.gov* using PuTTY:



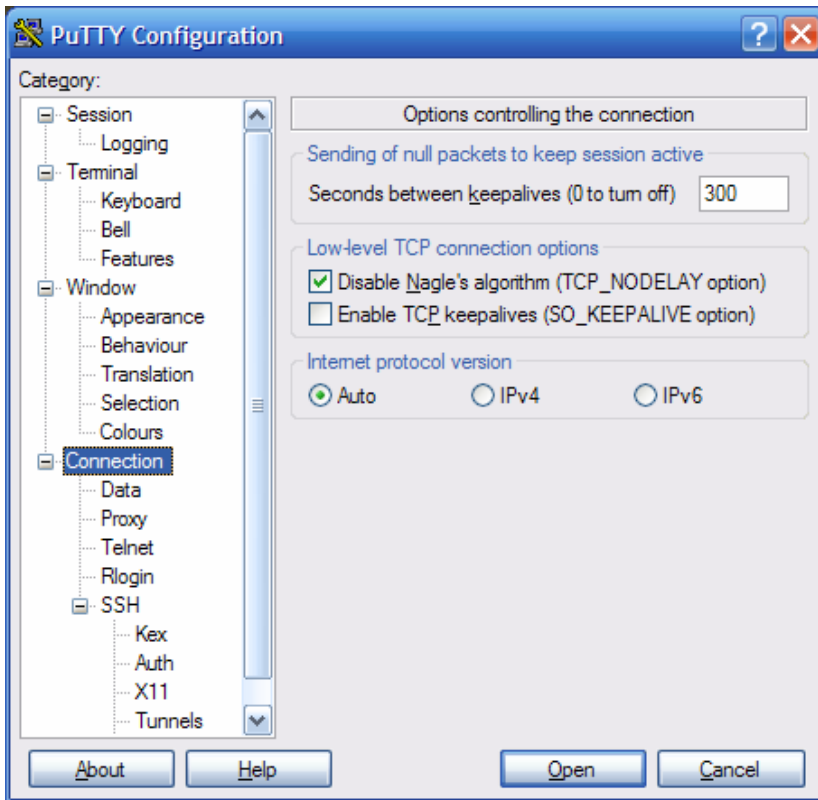
- This section assume that PuTTY has already been downloaded/installed
- Start PuTTY
- You can find PuTTY under “Start”, “All Programs”



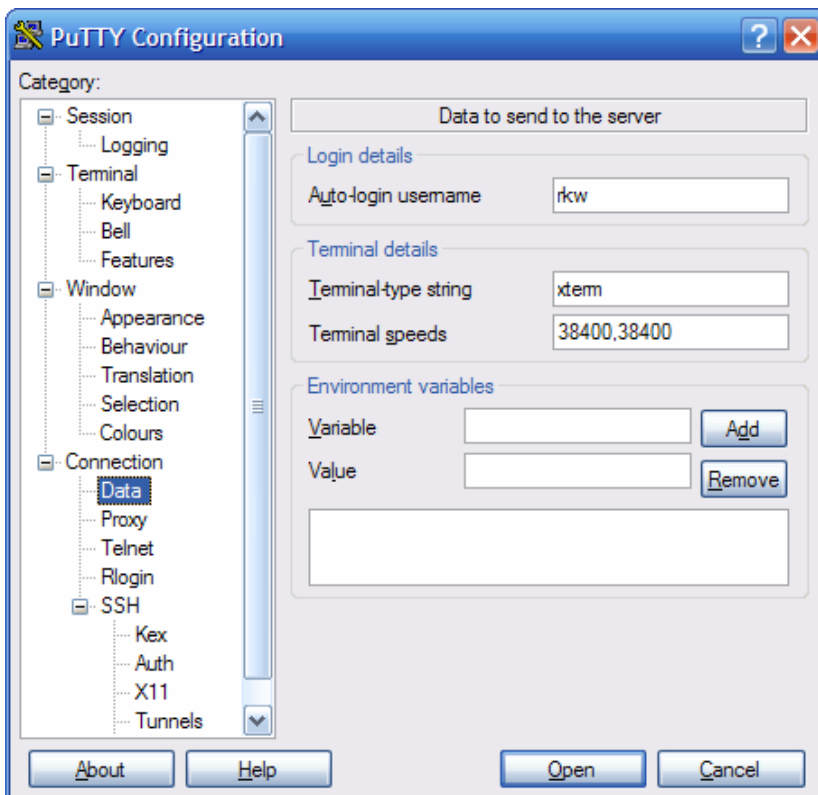
- For Host name, enter in “daisy.gfdl.noaa.gov”
- Click on the SSH button. The Port number will automatically change to 22.



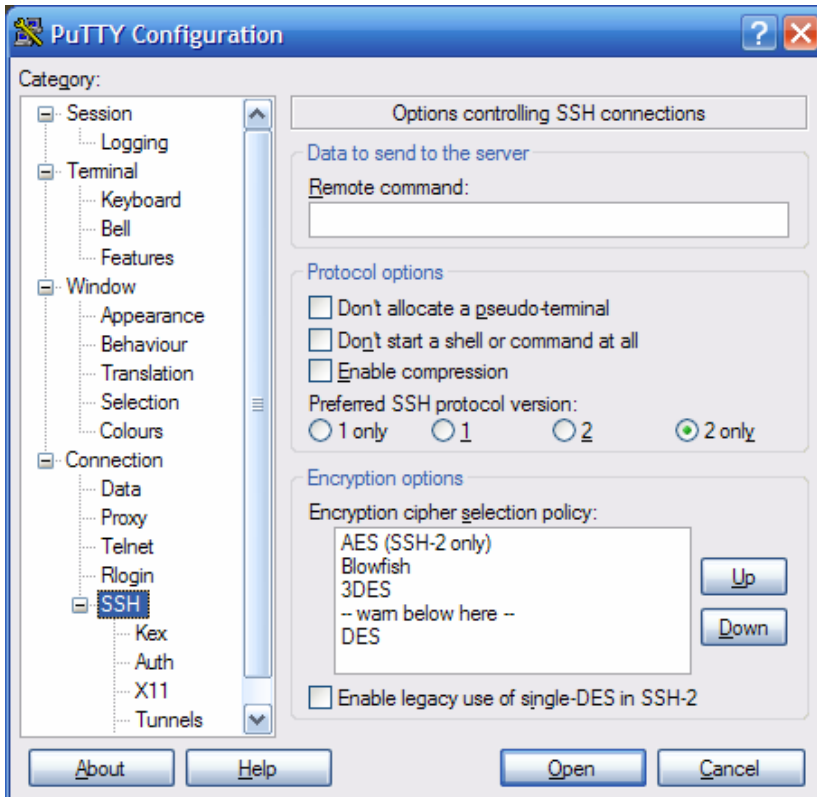
- Click on the “Window” Category on the left side.
- Change the “Lines of scrollbar” to “2000”



- Click on the “Connection” Category.
- In the “Sending of null packets to keep session alive” box, change the setting to “300”.

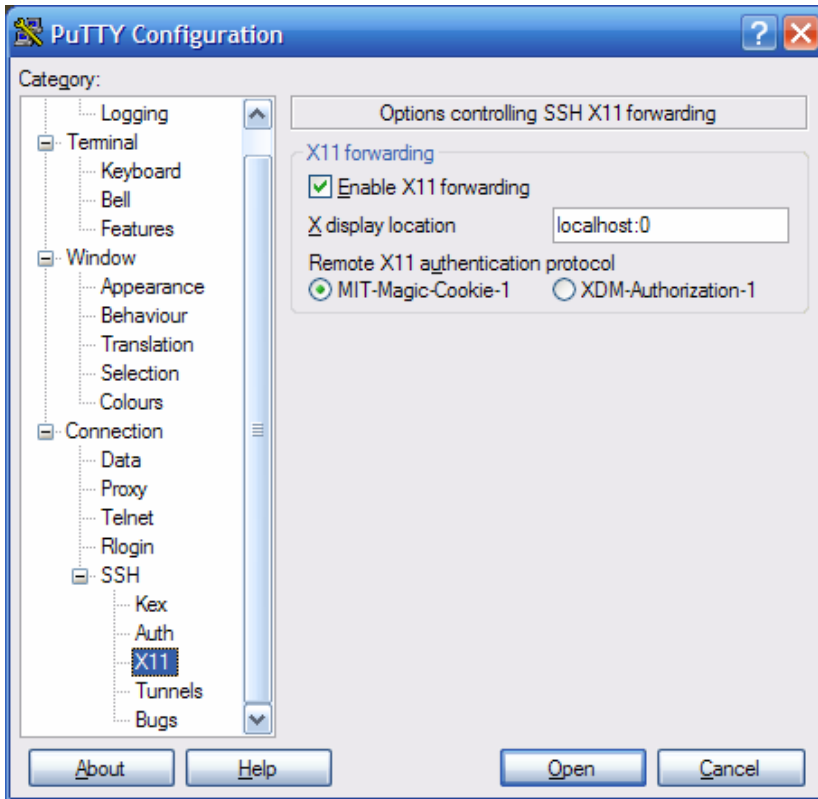


- Click on the “Data: Category.
- In the “Auto-login username” box enter your 2 or 3 letter user initials [example user “rkw” is shown]



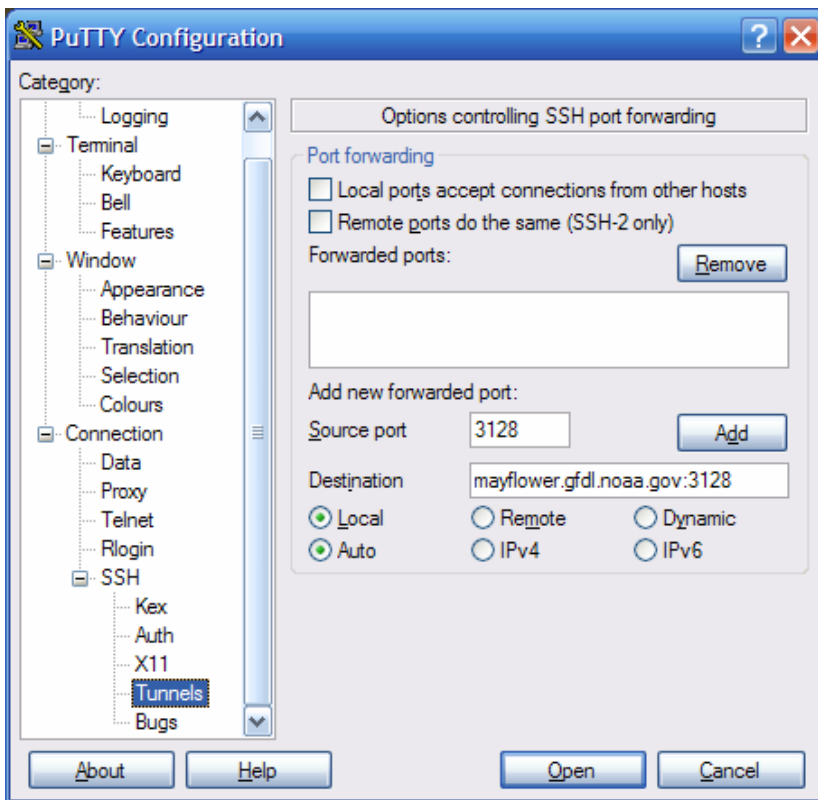
- Click on the “SSH” sub-Category.
- Change the “Preferred SSH protocol version:” to “2 only”.

2. Set up Port Forwarding (necessary only if a user will X-display a window to an external host, want to setup their web browser to view GFDL internal-only web pages):



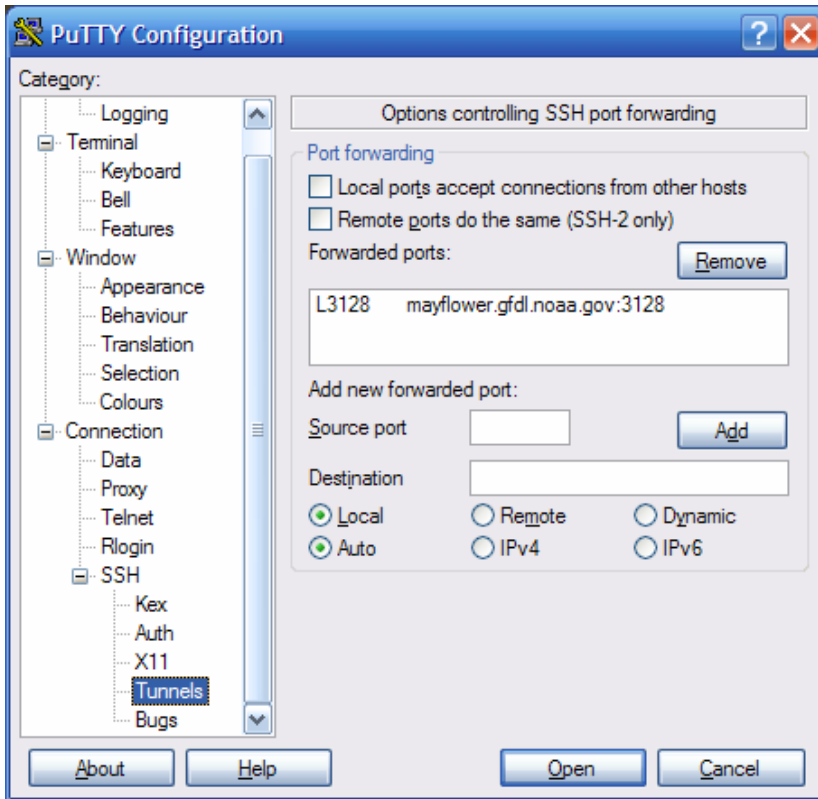
To be able to X-Display to an External host:

- Click on the “X11” sub-Category.
- Click on the checkbox to “Enable X11 forwarding”.
- In the “X display location” enter “localhost:0”.



To be able to use the GFDL proxy to view GFDL internal-only web pages:

- Click on the “Tunnels” sub-category.
- In the “Add new forwarded port:” enter 3128 as the “Source port” and “mayflower.gfdl.noaa.gov:3128” as the “Destination”.
- **DO NOT** check “Local ports accept connections from other hosts”.
- Click the “Add” button.



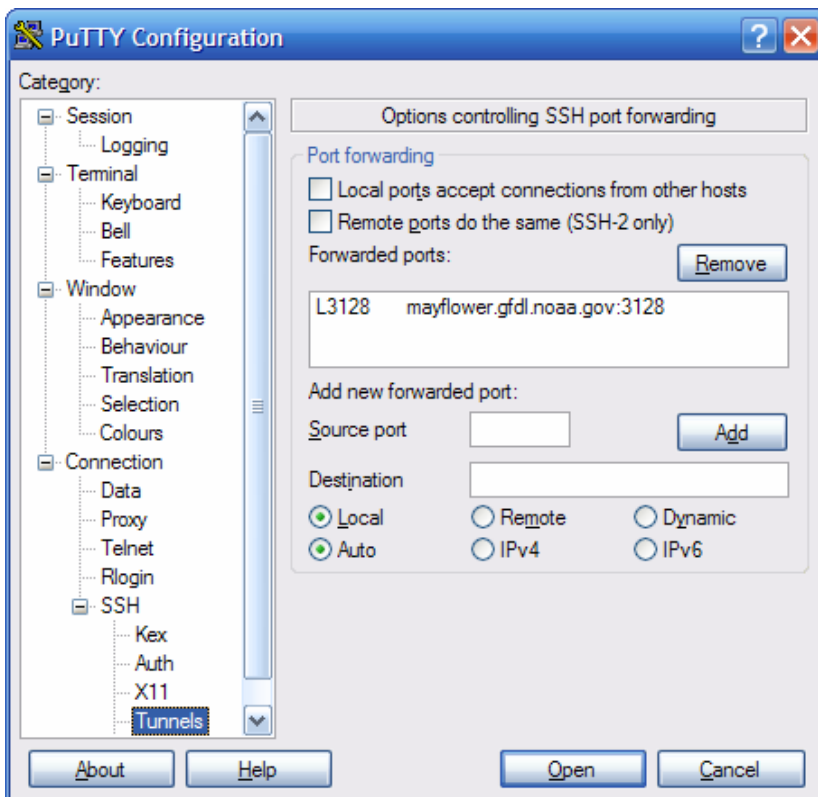
- The Tunnels screen should now look like the image to the left.

If your web proxy server is set correctly in your web browser, when you log into daisy, you will be able to view all internal GFDL web sites.

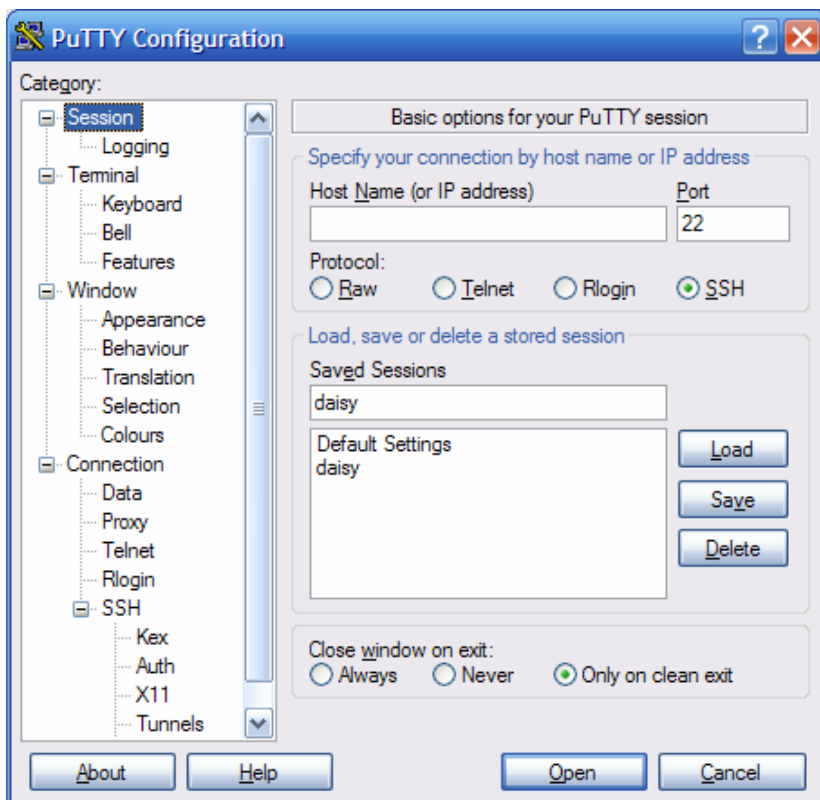
See the following site to see how to configure the auto-proxy for your web-browser:
<http://www.gfdl.noaa.gov/access/documentation>

The internal GFDL home page is:
<http://cobweb.gfdl.noaa.gov>

The internal GFDL helpdesk is:
<http://help.gfdl.noaa.gov>

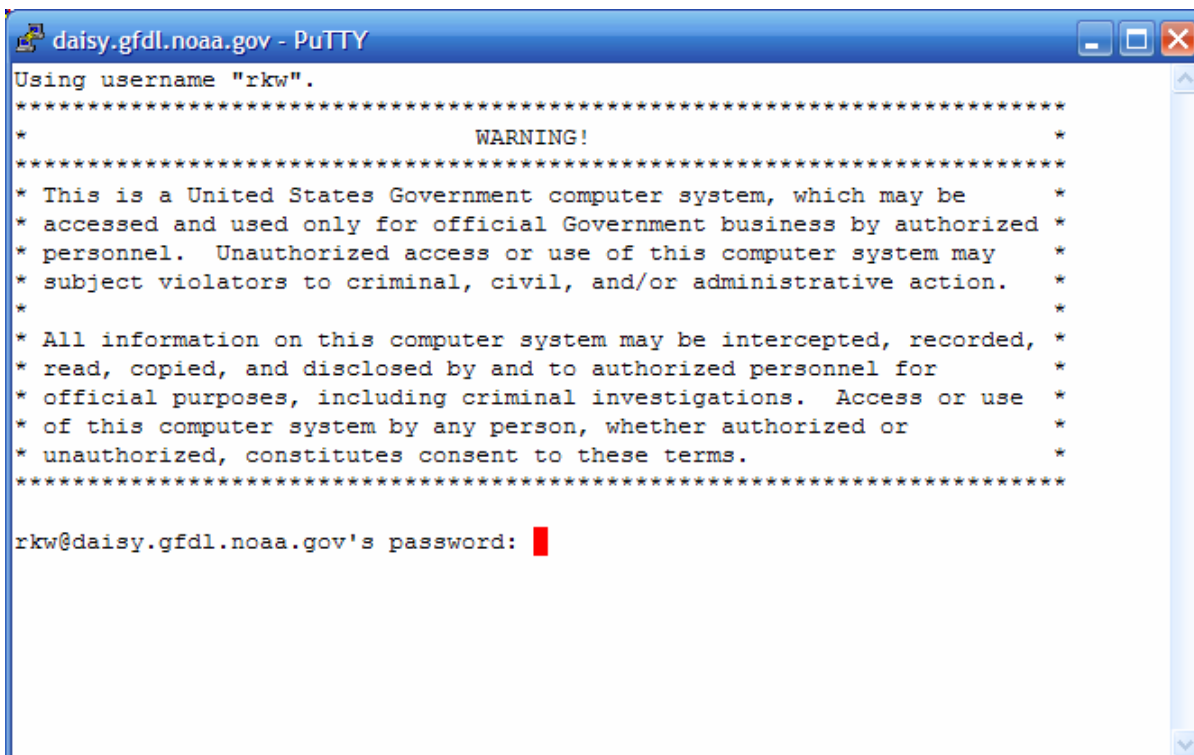


- The Tunnels screen should now look similar to the image to the left.



- Return to the “Sessions” Category.
- Enter “daisy”, or a session name to identify this as the login to GFDL, into the “Saved Sessions” box.
- **Click the “Save” button on the right.**

- In the future click on “daisy” in the “Saved Sessions” list to open the connection.
- The connection to daisy will look like this:
- After a warning banner, you will be prompted for a password. Enter in your one time password using your CRYPTOCARD password generator.



- Once you have successfully logged into daisy, your screen should look like this:

```

rkw@daisy:~
rkw@daisy.gfdl.noaa.gov's password:

      d8b          d8,          Services Rendered:
      88P          `8P          -----
      d88          + SSH Login
d8888888  d888b8b  88b .d888b,?88  d8P  -----
d8P' ?88  d8P' ?88  88P ?8b,  d88  88
88b ,88b 88b ,88b d88 `?8b ?8( d88
`?88P`88b`?88P`88bd88' `?888P' `?88P'?8b , daisy, give me
                                )88 your answer do
                                ,d8P --HAL
                                `?888P'

-For Questions or before anything is done contact:-
CONTACTS: Ron.Bewtra@noaa.gov (GFDL x6555)
          Buz.Taylor@noaa.gov (GFDL x5074)
          oar.gfdl.help@noaa.gov <--Help Desk
          http://help/ <--Help Desk

20030215 rnb: remember that daisy DOES NOT mount
           your home file system.
20030523 rnb: Maximum login session set to 3 days!

*****
*
* The host public1 is a new linux workstation that can be *
* utilized by remote access users. public is still *
* available, however public1 has more memory and compute *
* power. *
*
* Please send comments/questions to oar.gfdl.help@noaa.gov *
*
*****

-----

If you haven't read the warning, do so now.

-----

Authorized users can ssh/telnet to their destination host.

Special commands available:
menu      -> prints this menu
motd      -> prints Messages of the Day
mystats   -> prints some general user statistics
rmhost [host] -> removes old ssh host keys
ssh [host] -> secure shell session to a GFDL host
telnet [host] -> telnet session to a GFDL host
warning   -> prints the warning message

[rkw@daisy rkw]$ █

```

REMEMBER:

- Daisy is only a gateway. Daisy does not give you any tools to do work on it. From Daisy you can only SSH to another host inside GFDL.
- Port forwarding should be working. If your web proxy is set in your browser (see <http://www.gfdl.noaa.gov/access/documentation> to learn how to configure your proxy settings), you will now be able to view all internal GFDL web sites.
- From here you can ssh to an internal linux workstation (such as public1). You then can work within your PuTTY window or start a VNC session. See <http://www.gfdl.noaa.gov/access/documentation> for directions on using VNC at GFDL.