



MAES, Inc.

MAES

Overview

Michael Acosta
National President



AGENDA

- History
- Mission and Vision
- MAES Values
- Regions & Chapters
- Structure and Leadership
- Outreach Programs
- National Conferences
- Industry Advisory Council
- National Collaborative Endeavors
- MAES Contacts



History

- The Society of Mexican American Engineers and Scientists, Inc. (MAES), was founded in Los Angeles in 1974 by a group of professional engineers to advance and increase the number of Latinos, especially those of Mexican American descent, in science, technology, engineering, and mathematics by creating opportunities and fostering recognition through its professional, technical, and outreach activities.
- Outreach programs have been the primary focus and value-add of the MAES organization since its inception, providing the MAES Pipeline.



MISSION & VISION

MISSION

To promote, cultivate, and honor excellence in education and leadership among Latino engineers and scientists.

VISION

To be the model professional organization that successfully raises the education level of America and develops committed leaders for tomorrow.



MAES Values

- Innovation
- Education
- Familia
- Professional Achievement
- Leadership
- Outreach
- Dedication
- Our Heritage
- Role Models



MAES Regions & Chapters

MAES™ PROFESSIONAL CHAPTERS

Region 1: West

- 1 Alameda
- 2 Bay Area
- 3 Long Beach
- 4 Orange County
- 5 Phoenix
- 6 Tucson
- 7 Seattle

Region 2: Southwest

- 8 Albuquerque
- 9 Austin
- 10 Bryan/College Station
- 11 Dallas/Fort Worth
- 12 El Paso
- 13 Houston
- 14 Northern New Mexico
- 15 San Antonio
- 16 Southern Colorado
- 17 White Sands

Region 3: Midwest

- 18 Detroit Metro

Region 4: Southeast

- 19 Florida Space Coast

Region 5: Northeast

- 20 Nations Capitol

Region 6: International

MAES™ STUDENT CHAPTERS

Region 1: West

- 1 Arizona State University
- 2 California Maritime Academy
- 3 California Polytechnic State University, San Luis Obispo
- 4 California State University, Fullerton
- 5 California State University, Long Beach
- 6 California State University, Los Angeles
- 7 East Los Angeles Community College
- 8 Sacramento City College
- 9 San Diego City College
- 10 San Jose State University
- 11 Santa Ana Community College
- 12 Stanford University
- 13 University of California, Berkeley
- 14 University of California, Davis
- 15 University of California, Irvine
- 16 University of California, Los Angeles
- 17 University of California, Santa Barbara
- 18 University of the Pacific
- 19 University of Utah

Region 2: Southwest

- 20 Adams State College
- 21 Colorado State University, Pueblo
- 22 New Mexico Institute of Mining and Technology
- 23 New Mexico State University
- 24 Pueblo Community College
- 25 Rice University
- 26 San Antonio Community College
- 27 Southern Methodist University
- 28 St. Mary's University
- 29 Texas A&M University
- 30 Texas A&M University, Kingsville
- 31 Texas State University, San Marcos
- 32 University of Colorado at Boulder
- 33 University of Houston
- 34 University of New Mexico
- 35 University of North Texas
- 36 University of Texas at El Paso
- 37 University of Texas at San Antonio

Region 3: Midwest

- 38 DeVry University, Chicago
- 39 Iowa State University
- 40 University of Detroit, Mercy
- 41 University of Notre Dame

Region 4: Southeast

- 42 Florida International University
- 43 University of Louisville
- 44 University of South Florida

Region 5: Northeast

- 45 Massachusetts Institute of Technology

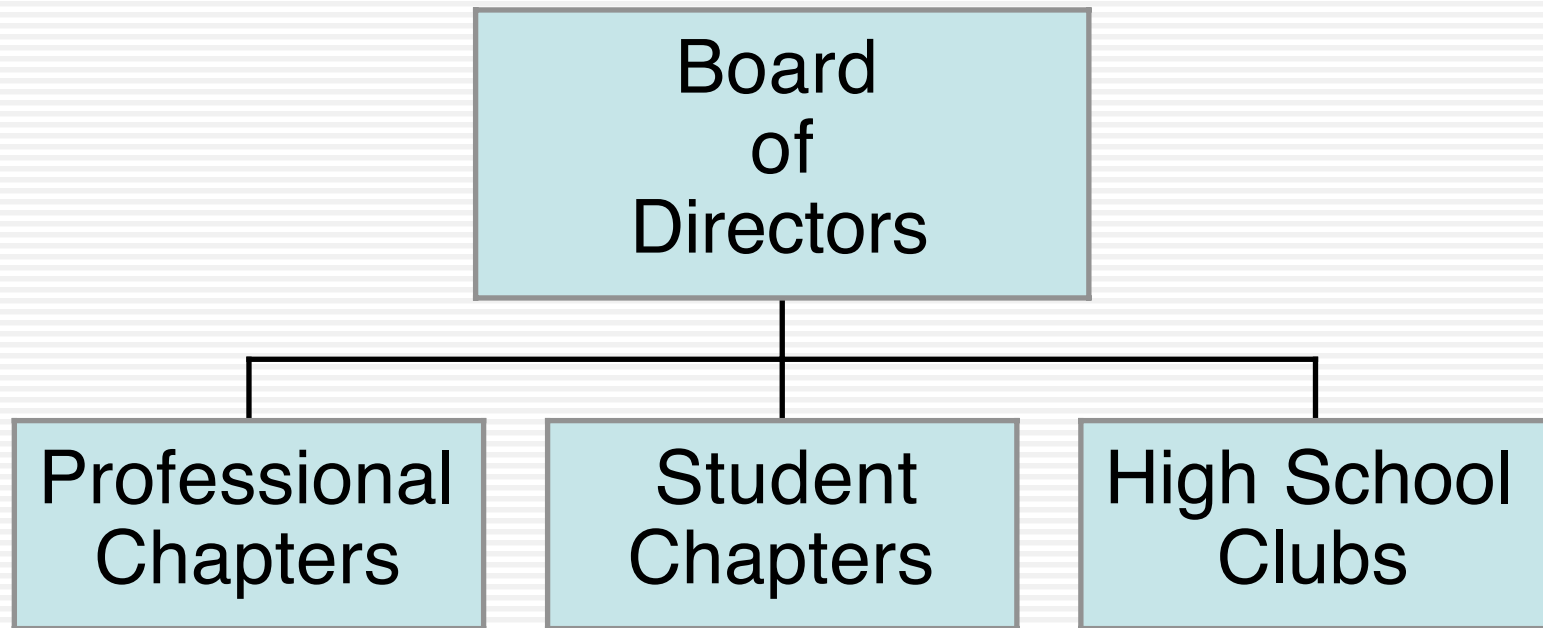
Region 6: International

- 46 Instituto Politécnico Nacional



All trademarks referenced on this page are the property of their respective owners.

MAES Structure



MAES Leadership

- National Board of Directors
 - 10 Professional Members
 - 2 Student Members (NSR & VNSR)
- Regional Vice Presidents
 - 6 Professionals
 - 6 Students
- Outreach Program Directors
- Executive Director



MAES Outreach Programs

- Pre-College and University Outreach
 - Science Extravaganzas are our flagship events for pre-college outreach
 - FIRST Robotics competition is becoming our flagship endeavor for technical hands on projects
- Graduate Outreach
 - Provides support to current and prospective Latino graduate students in science, technology, engineering, and mathematics in pursuit of their advanced degrees



MAES Conferences

- International Symposium & Career Fair
 - Premier conference offering multiple opportunities to students and professionals
 - Technical Papers and Research Posters
 - FIRST Robotics
 - Science Extravaganza
 - Awards to Role Models
 - Scholarship Program (Annually \$75,000)
 - Workshops, Tours, Networking Roundtables
 - Professional Training Series
 - Recruitment and employment opportunities
 - October/November timeframe
- National Leadership Conference
 - Intensive program of leadership development designed for both students and professionals
 - Held in March/April timeframe



MAES IAC

- The Industry Advisory Council (IAC) consists of MAES sponsors and supporters including corporate industry, federal government agencies, and other entities.
- The IAC provides ongoing, long-term financial support to MAES through funding of and participation in specific programs that advance the MAES mission.
- IAC members meet at a minimum of twice a year, at the International Symposium and Career Fair and the National Leadership Conference.



National Collaborative Endeavors

- National collaborative partnerships with SHPE, SACNAS and HENAAC
- Addressing the national technical talent crisis
- With federal agencies, corporate industries, universities and colleges, and other non-profits
- Also involved in international partnerships
 - With Mexico and Latin America
 - MAES has established university chapters in Mexico



MAES Contacts

Michael Acosta
MAES National President
mikea@maes-natl.org

Will Davis
MAES National Vice President of
Operations
wcdavis@maes-natl.org

Connie Medina
MAES National Vice President of
Development
cpmedina@maes-natl.org

Keith Marrocco
MAES Executive Director
keith@maes-natl.org

MAES Website
www.maes-natl.org

