

# South Carolina, 2006

## Primary and secondary syphilis

- **CASES:** South Carolina reported 66 cases in 2006.
- **RATES:** South Carolina ranked 32 among 50 states, DC, and 3 territories with 1.6 cases per 100,000 population compared to the total rate of 3.3 cases per 100,000 population.

## Rates of primary and secondary syphilis, by sex

- In South Carolina, the rate among males was 2.7 per 100,000 population compared to the total male rate of 5.7 per 100,000.
- The rate among females was 0.5 per 100,000 compared to the total female rate of 1.0 per 100,000.

## Rates of primary and secondary syphilis, by race/ethnicity

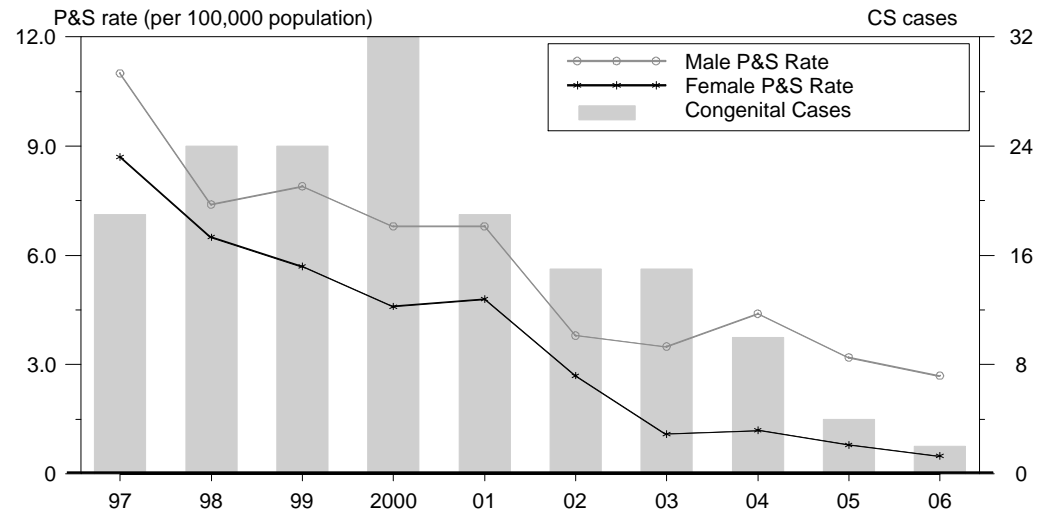
In South Carolina, the race/ethnicity adjusted rates per 100,000 population were 0.7 among whites, 3.7 among blacks, 0.7 among Hispanics, 0.0 among Asian/Pacific Islanders, and 0.0 among American Indians/Alaska Natives.

- The rate among blacks was 5.3 times that of whites.

## Congenital syphilis

- **CASES:** South Carolina reported 2 cases in 2006.
- **RATES:** South Carolina ranked 23 among 26 states, DC, and 1 territory reporting congenital syphilis cases with a rate of 3.5 cases per 100,000 live births compared to the total rate of 8.7 cases per 100,000.

## Syphilis: P&S Rates and Congenital Cases, South Carolina, 1997-2006



## Total P&S Syphilis Rates by County, South Carolina, 2006

