

Michigan, 2006

Primary and secondary syphilis

- **CASES:** Michigan reported 118 cases in 2006.
- **RATES:** Michigan ranked 38 among 50 states, DC, and 3 territories with 1.2 cases per 100,000 population compared to the total rate of 3.3 cases per 100,000 population.

Rates of primary and secondary syphilis, by sex

- In Michigan, the rate among males was 1.8 per 100,000 population compared to the total male rate of 5.7 per 100,000.
- The rate among females was 0.5 per 100,000 compared to the total female rate of 1.0 per 100,000.

Rates of primary and secondary syphilis, by race/ethnicity

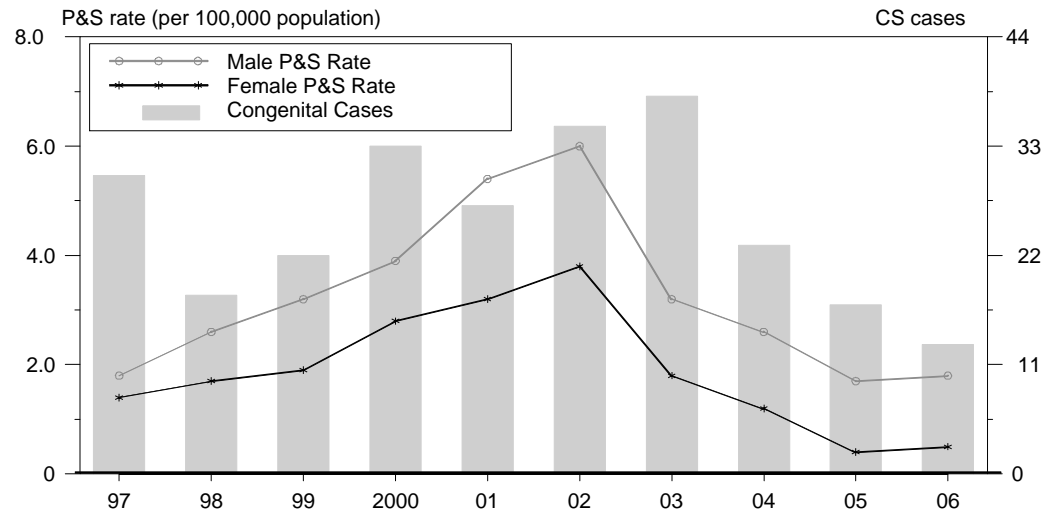
In Michigan, the race/ethnicity adjusted rates per 100,000 population were 0.5 among whites, 5.1 among blacks, 1.3 among Hispanics, 0.4 among Asian/Pacific Islanders, and 0.0 among American Indians/Alaska Natives.

- The rate among blacks was 10.2 times that of whites.
- The rate among Hispanics was 2.6 times that of whites.

Congenital syphilis

- **CASES:** Michigan reported 13 cases in 2006.
- **RATES:** Michigan ranked 13 among 26 states, DC, and 1 territory reporting congenital syphilis cases with a rate of 10.0 cases per 100,000 live births compared to the total rate of 8.7 cases per 100,000.

Syphilis: P&S Rates and Congenital Cases, Michigan, 1997-2006



Total P&S Syphilis Rates by County, Michigan, 2006

