

# Connecticut, 2006

## Primary and secondary syphilis

- **CASES:** Connecticut reported 64 cases in 2006.
- **RATES:** Connecticut ranked 27 among 50 states, DC, and 3 territories with 1.8 cases per 100,000 population compared to the total rate of 3.3 cases per 100,000 population.

## Rates of primary and secondary syphilis, by sex

- In Connecticut, the rate among males was 3.6 per 100,000 population compared to the total male rate of 5.7 per 100,000.
- The rate among females was 0.1 per 100,000 compared to the total female rate of 1.0 per 100,000.

## Rates of primary and secondary syphilis, by race/ethnicity

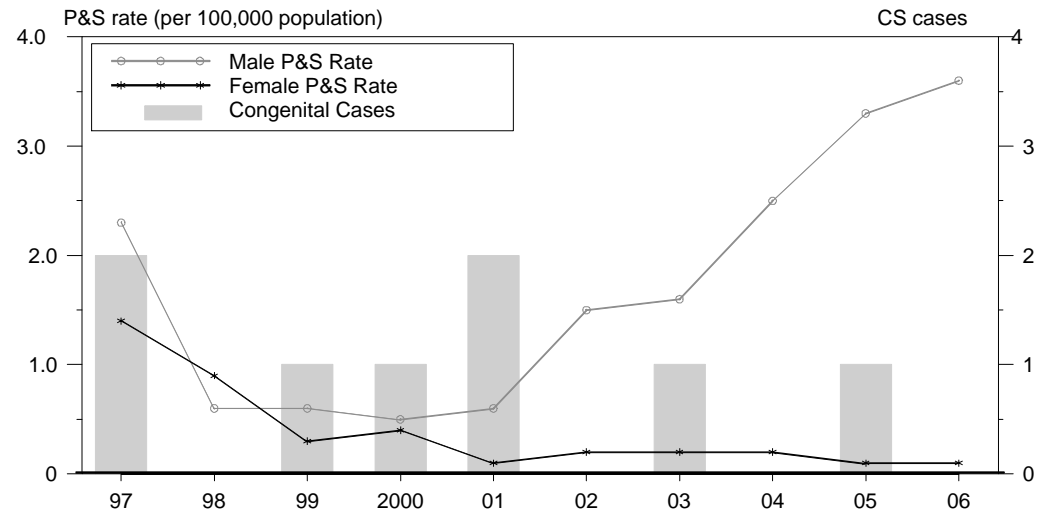
In Connecticut, the race/ethnicity adjusted rates per 100,000 population were 1.1 among whites, 7.1 among blacks, 2.4 among Hispanics, 1.7 among Asian/Pacific Islanders, and 0.0 among American Indians/Alaska Natives.

- The rate among blacks was 6.5 times that of whites.
- The rate among Hispanics was 2.2 times that of whites.
- The rate among Asian/Pacific Islanders was 1.5 times that of whites.

## Congenital syphilis

- **CASES:** Connecticut reported 0 cases in 2006.
- **RATES:** Connecticut had a rate of 0.0 cases per 100,000 live births compared to the total rate of 8.7 cases per 100,000.

## Syphilis: P&S Rates and Congenital Cases, Connecticut, 1997-2006



## Total P&S Syphilis Rates by County, Connecticut, 2006

