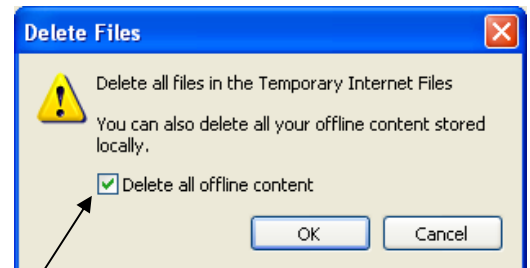
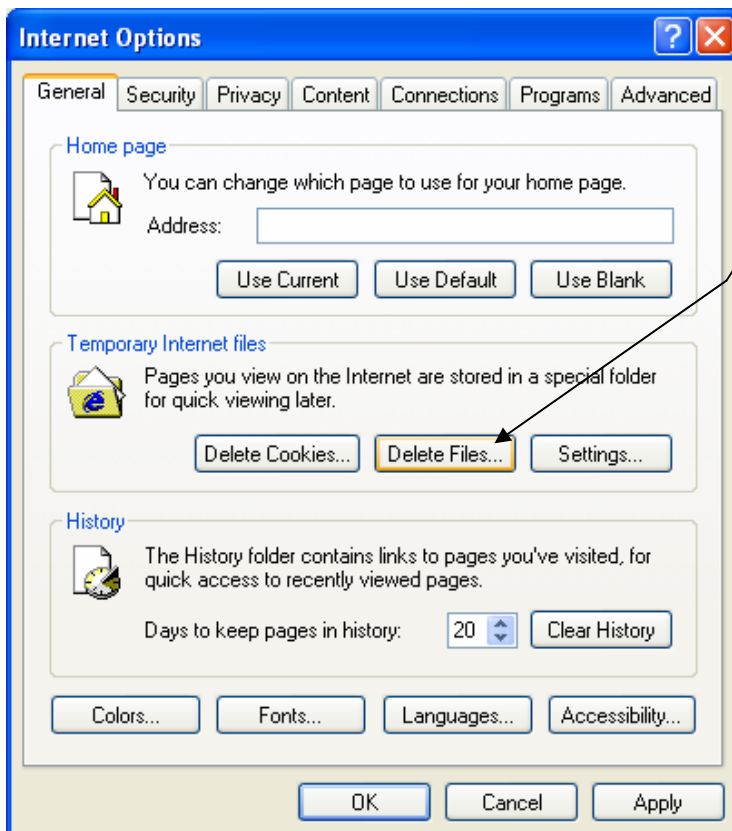




Nearshore Fish Atlas of Alaska

Requirements for optimal viewing of the online Atlas:

- High speed internet connection.
- A recent version of Microsoft Internet Explorer.
- Please be patient with the interactive mapping frame. It takes time to redraw the maps as you query the database.
- Maximize the database window.
- If your query locks up, try using the database “Back” or “Start Over” buttons. Your browser “View Refresh” feature might also help.
- **Browser Settings:**
 - Turn off your “pop up blocker”.
 - Delete temporary offline internet files.



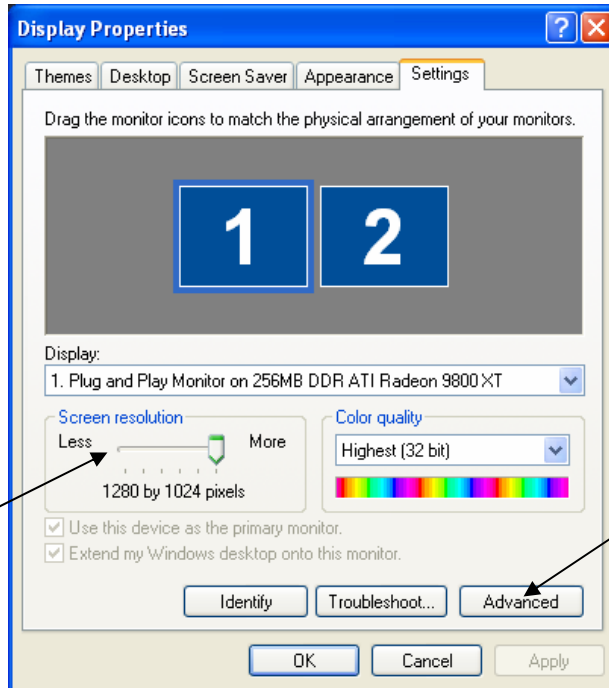
see next page



Nearshore Fish Atlas of Alaska

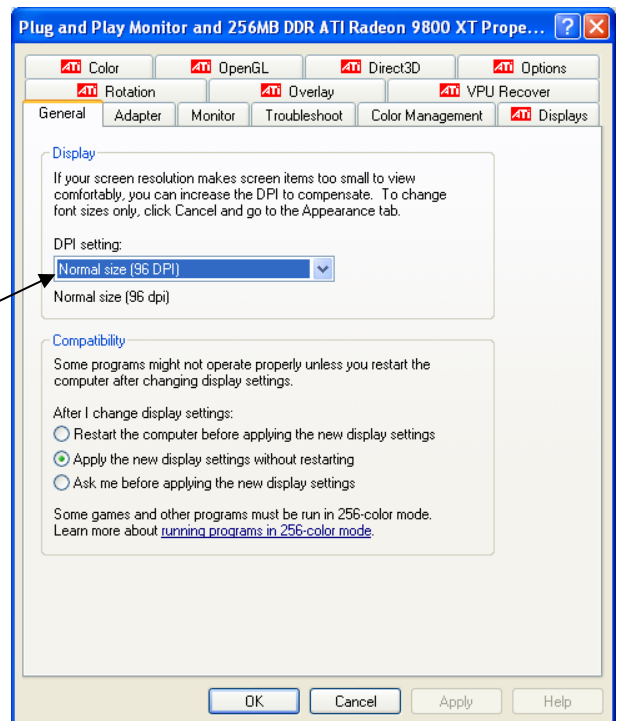
- **Windows Settings:**

- Set screen resolution to 1280 x 1024 pixels and select 96 dpi or normal size.



1. Slide bar to increase resolution

2. Click on Advanced



3. Select Normal (96 dpi)