

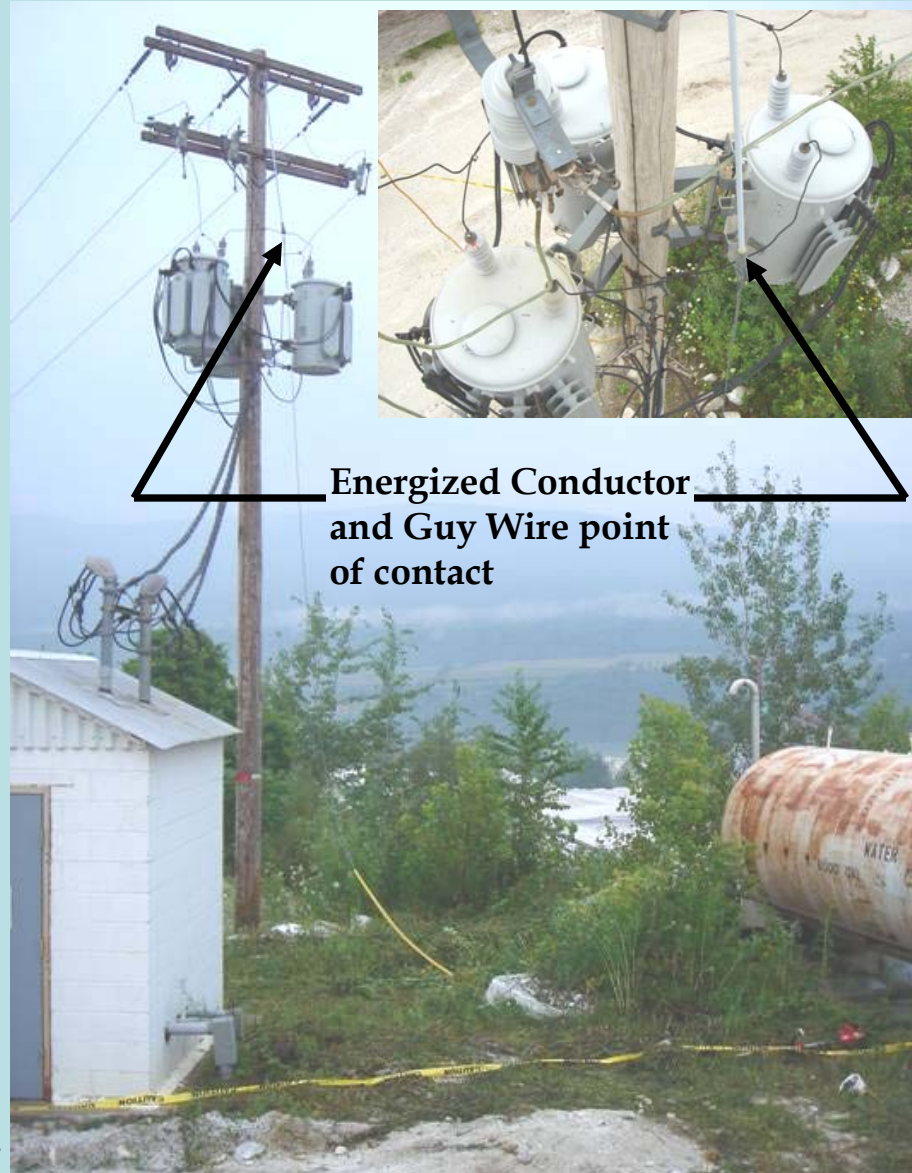


## HAZARD ALERT BULLETIN

### ENERGIZED GUY WIRES HAVE ELECTROCUTED TWO MINERS IN 2006

#### BEST PRACTICES FOR THE MINING INDUSTRY

- 1) Connect guy wires securely to the system ground, and/or properly install insulators to protect miners in the event of a breakage.
- 2) Adequately anchor guy wires where they will not be contacted by vehicles/equipment or disturbed by maintenance personnel.
- 3) Examine areas surrounding electrical installations for potential hazards before beginning any work, including trimming weeds and brush.
- 4) Mark guy wire anchor points for easy identification.



**METAL/NONMETAL MINE FATALITY** - On July 27, 2006, a miner was fatally injured using a weed trimmer to cut weeds near a power pole when he struck the guy wire for the pole. The blade severed the guy wire, causing it to contact the energized supply conductors on the pole mounted transformer and electrocuted him.

**COAL MINE FATALITY** - On May 4, 2006, a miner was fatally injured while clearing brush from the right-of-way of a 12,470 VAC transmission line. The miner touched a loose guy wire causing it to contact the energized supply conductors on the pole to which it was attached. There was no insulator, ground, or proper anchor at ground level preventing the guy wire from becoming energized.