

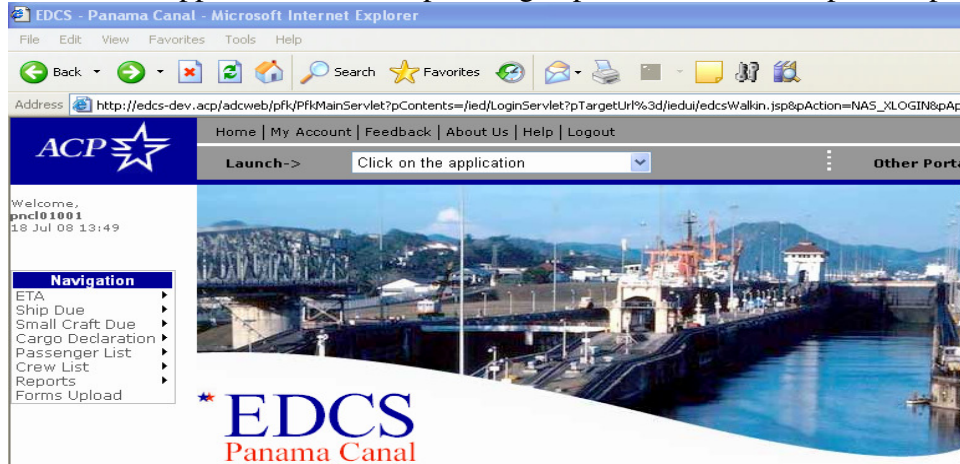
USER'S GUIDE

Date: July 18, 2008

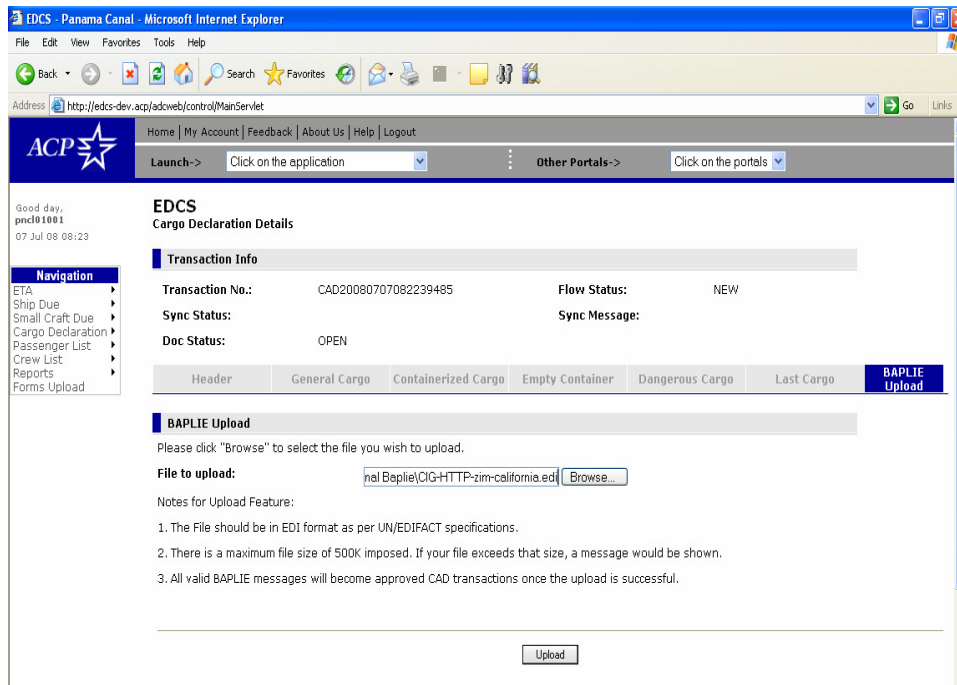
Guideline for Baplie Files.

I. Upload Baplie Files.

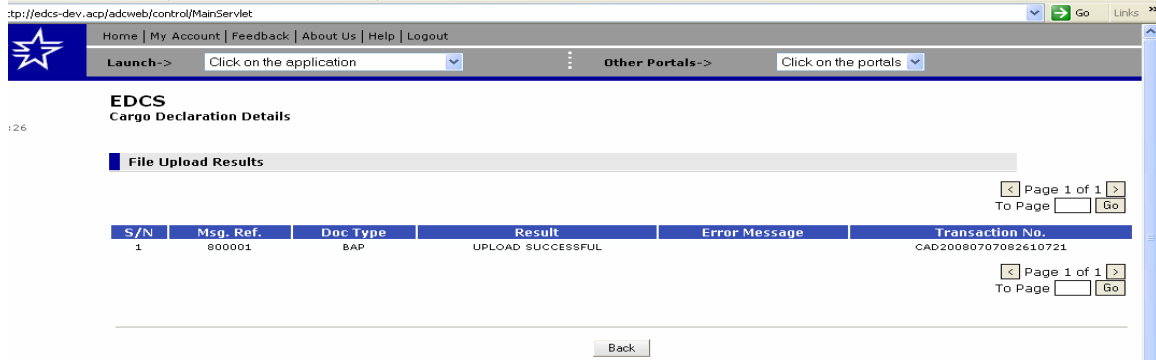
The EDCS Application allows uploading baplie files with the Upload Option



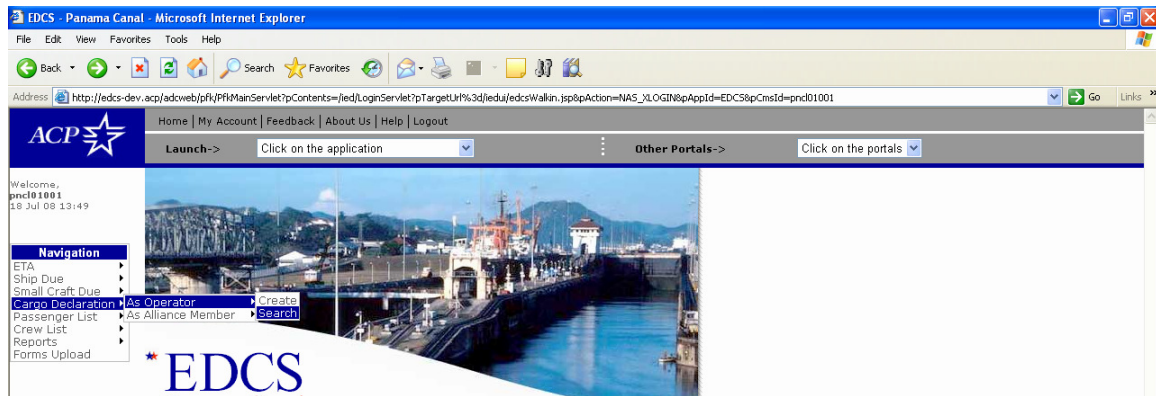
Click on the Baplie Upload tab
Click "Browse" to select the file you wish to upload.
Click Upload Button.



The system will show the following message (“Upload Successfully”) and it will generate a transaction number.



Under the option (Cargo Declaration -Search) you can consult the new transaction.



EDCS Cargo Declaration Search

Search Results

Page 1 of 3
To Page Go

Submit | Delete | Download | Download Summary

S/N	Transaction No. ▲	Visit No.	Internal Movement Sequence	Vessel SIN	Vessel Name	Estimated Time Of Arrival	Customer Code	Vessel Agent	Member Customer Code	Active Indicator	Flow Status	Doc Status	Sync Status
<input type="checkbox"/> 1	CAD20080707082610721	146724	545855	6001238	ZIM CALIFORNIA	05/07/2008 06:00	MAERSK	FERNIE		Y	APPROVED	OPEN	Success

The CAD transaction will show all the information processed from the baplie file.

EDCS - Panama Canal - Microsoft Internet Explorer

Address: http://edcs-dev.acp/adcweb/control/MainServlet

07 Jul 08 08:39

Transaction Info

Transaction No.: CAD20080707082610721 Flow Status: APPROVED
 Sync Status: Success Sync Message:
 Doc Status: OPEN

Navigation

- ETA
- Ship Due
- Small Craft Due
- Cargo Declaration
- Passenger List
- Crew List
- Reports
- Forms Upload

Header General Cargo Containerized Cargo Empty Container Dangerous Cargo Last Cargo BAPLIE Graphics

Vessel & Visit Information

Estimated Time Of Arrival: 05/07/2008 0600 Vessel Name*: ZIM CALIFORNIA
 Visit No.*: 146724 Vessel SIN*: 6001238
 Internal Movement Sequence: 545855 Vessel Agent: FERNIE
 Seq No.*: 1 Customer Code*: MAERSK
 Ship Type: 07 IMO No: 9231793
 Member Customer Code:

Complementary Vessel Information

Service Code: Service Name:
 Voyage No: JOA02 Voyage Type:
 Alliance: Voyage Type(if others):
 Carrier:

Cargo Information

Carrying General or Containerized Cargo?*: Yes Major Cargo Type:
 Empty Tank?: Yes Major Deck Cargo Type:
 Explosives Or Dangerous Cargo in Bulk On Board?*: No Deck Cargo Remark:
 Dangerous Cargo in Package On Board?*: Yes

Done Local intranet

EDCS - Panama Canal - Microsoft Internet Explorer

Address: http://edcs-dev.acp/adcweb/control/MainServlet

07 Jul 08 08:40

Home | My Account | Feedback | About Us | Help | Logout

Launch-> Click on the application Other Portals-> Click on the portals

Good day,
 pncel01001
 07 Jul 08 08:40

EDCS
 Cargo Declaration Details

Transaction Info

Transaction No.: CAD20080707082610721 Flow Status: APPROVED
 Sync Status: Success Sync Message:
 Doc Status: OPEN

Header General Cargo **Containerized Cargo** Empty Container Dangerous Cargo Last Cargo BAPLIE Graphics

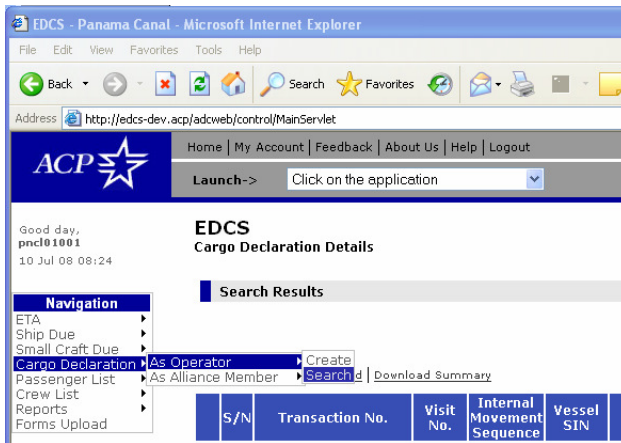
Page 1 of 233
 To Page [] Go

S/N	Harmon. Code	Description	Port Of Origin Code	Port Of Origin Descr.	Country Of Origin	Port Of Dest. Code	Port Of Dest. Descr.	Country Of Dest.	Weight (MT)	Id	Type	Size	Size Type
<input type="checkbox"/> 1			USEWB	NEW BEDFORD-FALL RIVER APT	UNITED STATES	JPYOK	YOKOHAMA	JAPAN	10.524	PONU0013960	General Cargo	20	STD
<input type="checkbox"/> 2		20	USEWB	NEW BEDFORD-FALL RIVER APT	UNITED STATES	JPYOK	YOKOHAMA	JAPAN	5.724	SEAU2176482	General Cargo	20	STD
<input type="checkbox"/> 3		20	USEWB	NEW BEDFORD-FALL RIVER APT	UNITED STATES	JPYOK	YOKOHAMA	JAPAN	2.623	MSKU2915590	General Cargo	20	STD
<input type="checkbox"/> 4		20	USEWB	NEW BEDFORD-FALL RIVER APT	UNITED STATES	JPYOK	YOKOHAMA	JAPAN	20.839	CPIU8919054	General Cargo	20	STD
<input type="checkbox"/> 5		20	USEWB	NEW BEDFORD-FALL RIVER APT	UNITED STATES	JPYOK	YOKOHAMA	JAPAN	6.015	TTNU2961258	General Cargo	20	STD

Page 1 of 233
 To Page [] Go

II. BAPLIE GRAPHICS – Funtions and Searches

1. Option *Cargo Declaration* → *As Operator* → *Search*

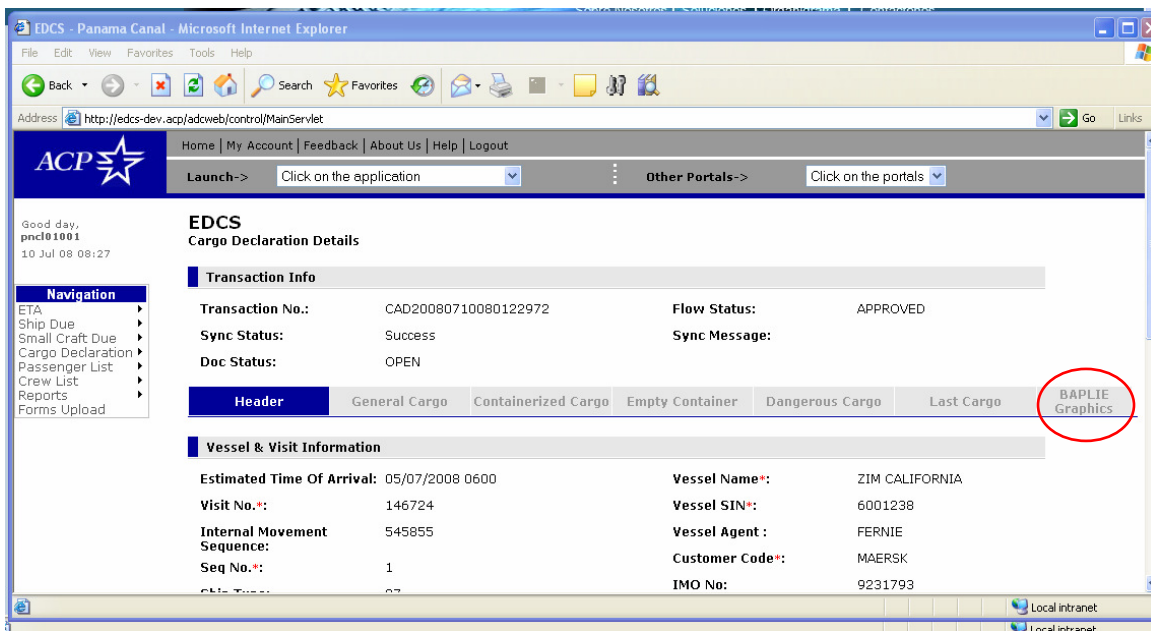


2. Search a visit number

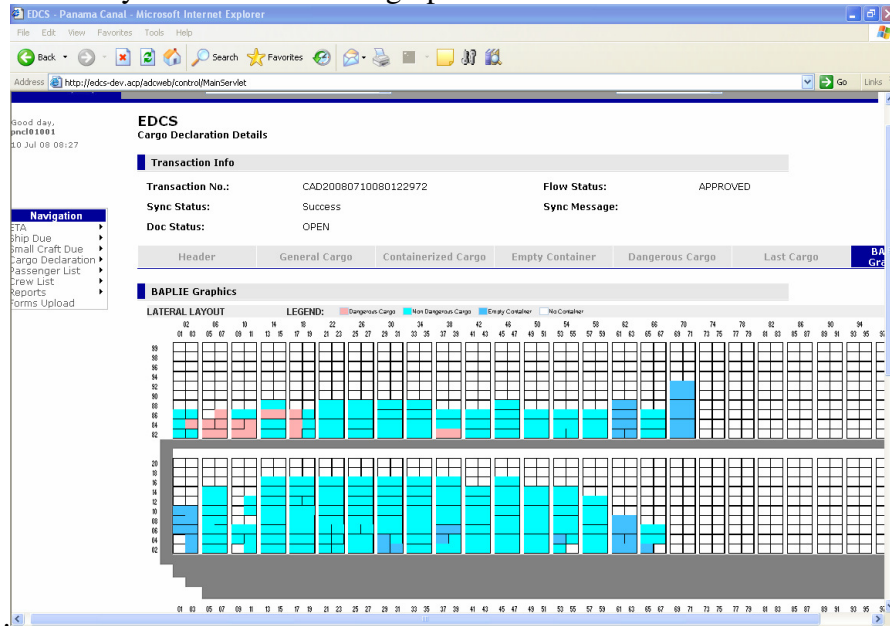
Search Criteria

Transaction No.:	<input type="text"/>	Internal Movement Sequence:	<input type="text"/>
Visit No.:	<input type="text" value="146724"/>	Vessel Name:	<input type="text"/>
Flow Status:	<input type="text"/>	Vessel SIN:	<input type="text"/>
Doc Status:	<input type="text"/>	Sync Status:	<input type="text"/>
Source:	<input type="text"/>		

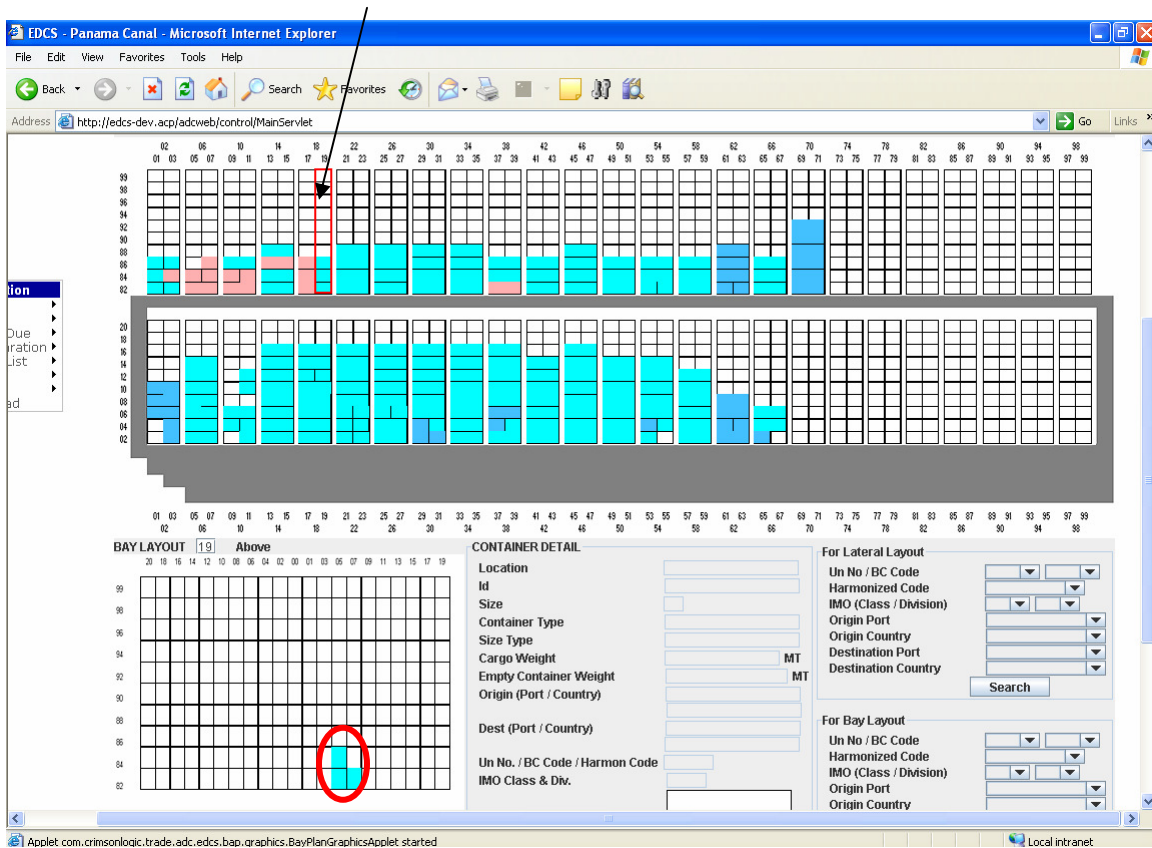
Clic Baplie Graphics Tab.



3. The system will show the graphic of the vessel and the containers declared



4. If you Clicking a section, you could see the details in the section Bay Layout



5. If you click the container in the section (1), you could see the details of the container in the section Container Detail (2).

The screenshot shows a web interface with a bay layout grid on the left and a container detail form on the right. The grid is labeled 'BAY LAYOUT 19 Above' and has columns numbered 01 to 99 and rows numbered 02 to 99. A red arrow points from a container in the grid (labeled '1') to the detail form (labeled '2').

CONTAINER DETAIL

Location	19-05-84
Id	MAEU6812565
Size	20
Container Type	GN
Size Type	ST
Cargo Weight	13.36 MT
Empty Container Weight	0.0 MT
Origin (Port / Country)	FORD-FALL RIVER APT UNITED STATES
Dest (Port / Country)	BALBOA PANAMA
Un No. / BC Code / Harmon Code	
IMO Class & Div.	20

For Lateral Layout

Un No / BC Code
Harmonized Code
IMO (Class / Division)
Origin Port
Origin Country
Destination Port
Destination Country

For Bay Layout

Un No / BC Code
Harmonized Code
IMO (Class / Division)
Origin Port
Origin Country

6. In the section “For lateral layout” and “For Bay Layout”, you could do searches.

The screenshot shows a web interface with a bay layout grid on the left and a container detail form on the right. The grid is labeled 'BAY LAYOUT 34 Below' and has columns numbered 01 to 99 and rows numbered 02 to 20. A red box highlights a container in the grid.

CONTAINER DETAIL

Location	34-02-92
Id	PONU4834394
Size	40
Container Type	GN
Size Type	HC
Cargo Weight	29.85 MT
Empty Container Weight	0.0 MT
Origin (Port / Country)	FORD-FALL RIVER APT UNITED STATES
Dest (Port / Country)	YOKOHAMA JAPAN
Un No. / BC Code / Harmon Code	
IMO Class & Div.	40
Description	

For Lateral Layout

Un No / BC Code
Harmonized Code
IMO (Class / Division)
Origin Port
Origin Country
Destination Port
Destination Country

For Bay Layout

Un No / BC Code
Harmonized Code
IMO (Class / Division)
Origin Port
Origin Country
Destination Port
Destination Country

Container Location
Container Id: PONU4834394

Page 1 of 1

Legend:

- All IMO Class 1
- All IMO Class 2
- All IMO Class 3
- All IMO Class 4
- All IMO Class 5
- All IMO Class 6, 7, 8, 9 AND 23
- 2.1, 2.2, All IMO Class 9
- 4.3
- Non Dangerous Cargo
- Non Container
- Empty Container

Electronic Data Collection System • Canal Internet Gateway