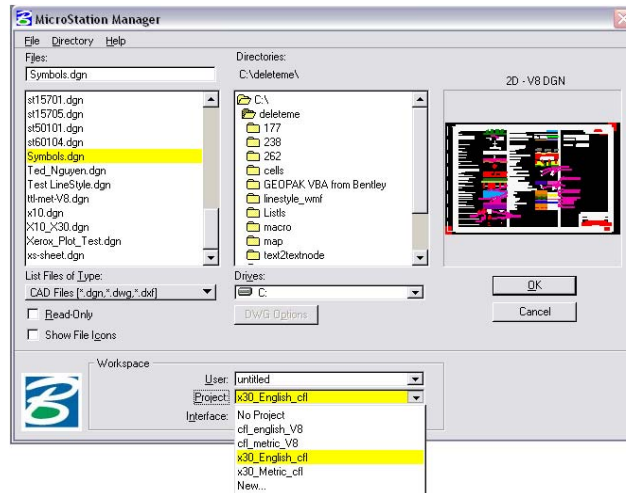


Setting up drawings using V8 with New Standards

- Pick Project Configuration from the "MicroStation Manager" dialog box
 - (CFL or X30 – Metric or English)



- Find Correct Standard Border File

CFL(X10 or X08)
n:\standards\geopak\v8\English\pnp_sheet_layout\geopak2004\bdr-eng-v8.dgn
n:\standards\geopak\v8\metric\pnp_sheet_layout\geopak2004\bdr-met-v8.dgn
X30
n:\standards\v8_resource\x_30\standards\sheet_layout\English\border_english.dgn
n:\standards\v8_resource\x_30\standards\sheet_layout\metric\border_metric.dgn

- Copy the file into n:\your project\roadway\sheets\
- Create new drawing files using the correct seed file (CFL or X30)

CFL(X10 or X08)
n:\standards\microstation\v8\English\seed\...
n:\standards\microstation\v8\metric\seed\...
X30
n:\standards\v8_resource\x_30\standards\seed\English\...
n:\standards\v8_resource\x_30\standards\seed\metric\...

Drawing Types

1. For Typical Sections, Specials

Open your drawing created from seed file. Reference the Border file from the project location above that you copied the Standard border to.

- a. Turn off the levels you do not need for your type of drawing (see list on right side of border) [Note that D_CFL_Sheet_Border_PlotShape is set to not plot but will be needed to batch plot your drawings so leave it turned on.]
- b. Scale border to the scale needed for your drawing (Note border is drawn for 1"=100' [US Customary] or 1:1000 [Metric])
- c. **DRAW**

Setting up drawings using V8 with New Standards

2. **Plan/Profile, Plan/Plan** (*GEOPAK created Plans*)

- a. Follow directions in Chapter 19 of CFLHD CADD Standards

3. **Site Plans, Parking Areas, Manually created (Non-GEOPAK) Plans**

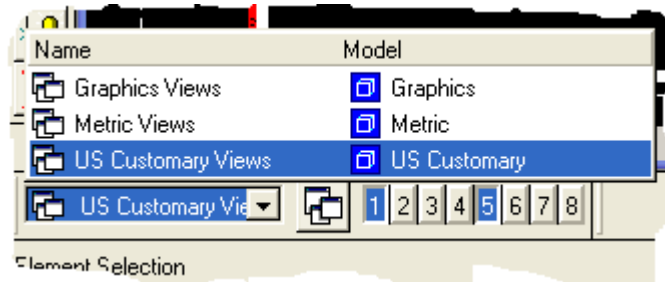
Open your drawing created from seed file. Reference in files needed for your drawing.

- a. Reference the Border file from the project location above that you copied the Standard border to.
- b. Move reference file (*border*) into location.
- c. Turn off the levels you do not need for your type of drawing (*see list on right side of border*)
- d. Scale border to the scale needed for your drawing (*Note border is drawn for 1"=100' [US Customary] or 1:1000 [Metric]*)

4. **Detail Drawings**

Copy Detail drawing from CFLHD website.

- a. Choose Metric or US Customary views from the "View Groups" dialog

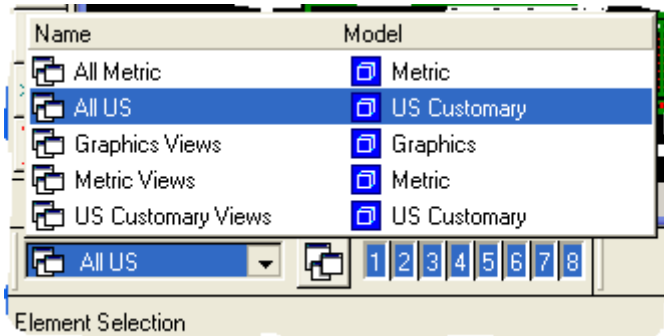


- b. Delete the "Border" cell in the detail
- c. Attach your project border file from your project directory (*It will attach automatically in the right location for the Detail.*)
- d. Turn off all levels in the Border reference file except
 - i. D_CFL_Sheet_Border_PlotShape
 - ii. D_CFL_Sheet_Border_Project_Info
 - iii. D_CFL_Sheet_Border_Detail
 - iv. D_CFL_Sheet_BorderBase
 - v. D_CFL_Sheet_Border_NPS_Pkg (*if needed*)

5. *Standard Drawings*

Copy Standard drawing from CFLHD website.

- a. Choose Metric or US Customary views from the "View Groups" dialog



- b. Turn off all views except 1 and 5
- c. Turn **off** level D_WFL_Arch and **on** level D_Triad in the active file
- d. Attach your project border file from your project directory.
- e. Turn off all levels in the Border reference file except
 - i. D_CFL_Sheet_Border_PlotShape
 - ii. D_CFL_Sheet_Border_Project_Info
 - iii. D_CFL_Sheet_Border_NPS_Pkg (*if needed*)
- f. Be sure to "Save Settings" to keep the view settings