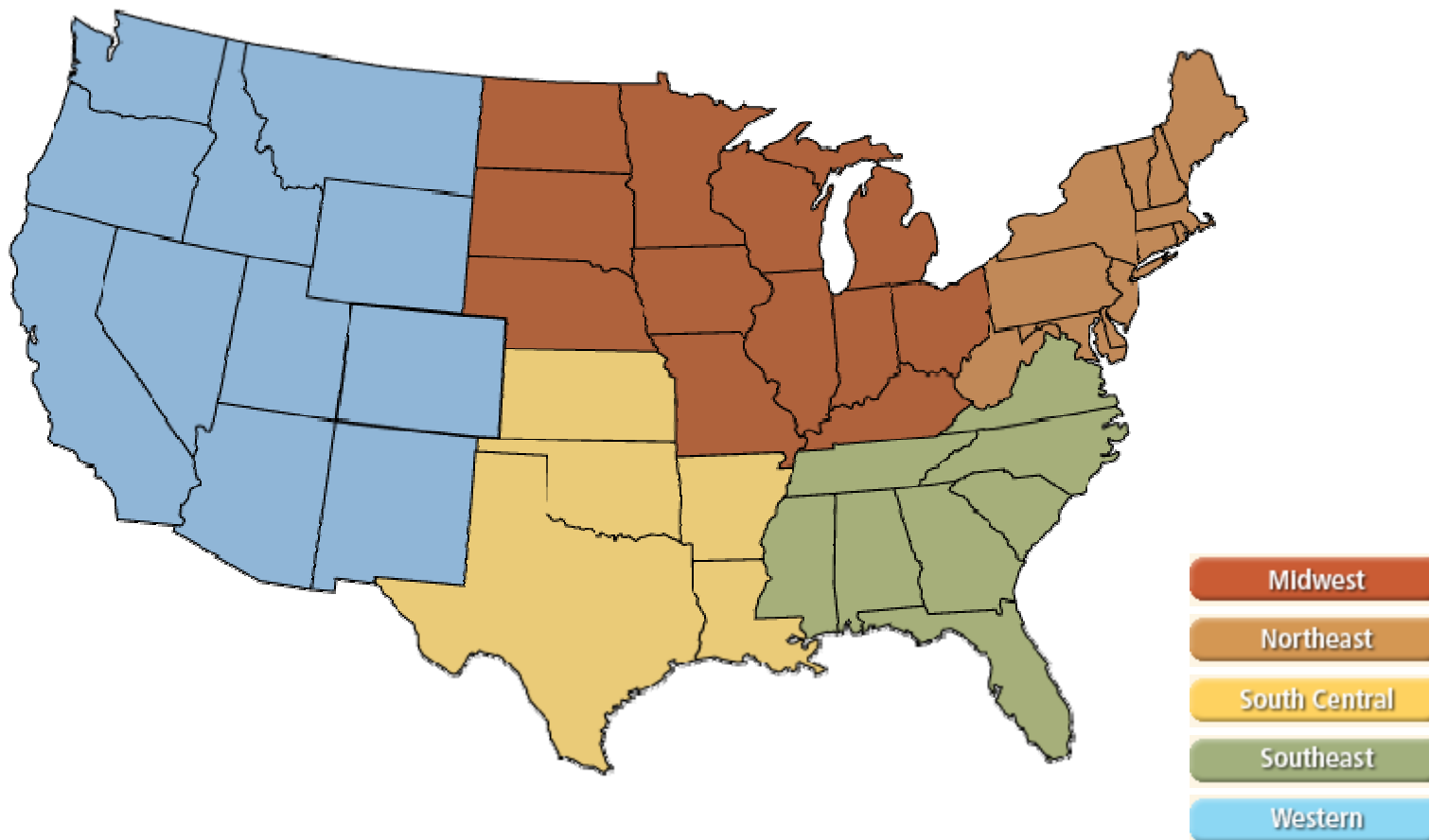
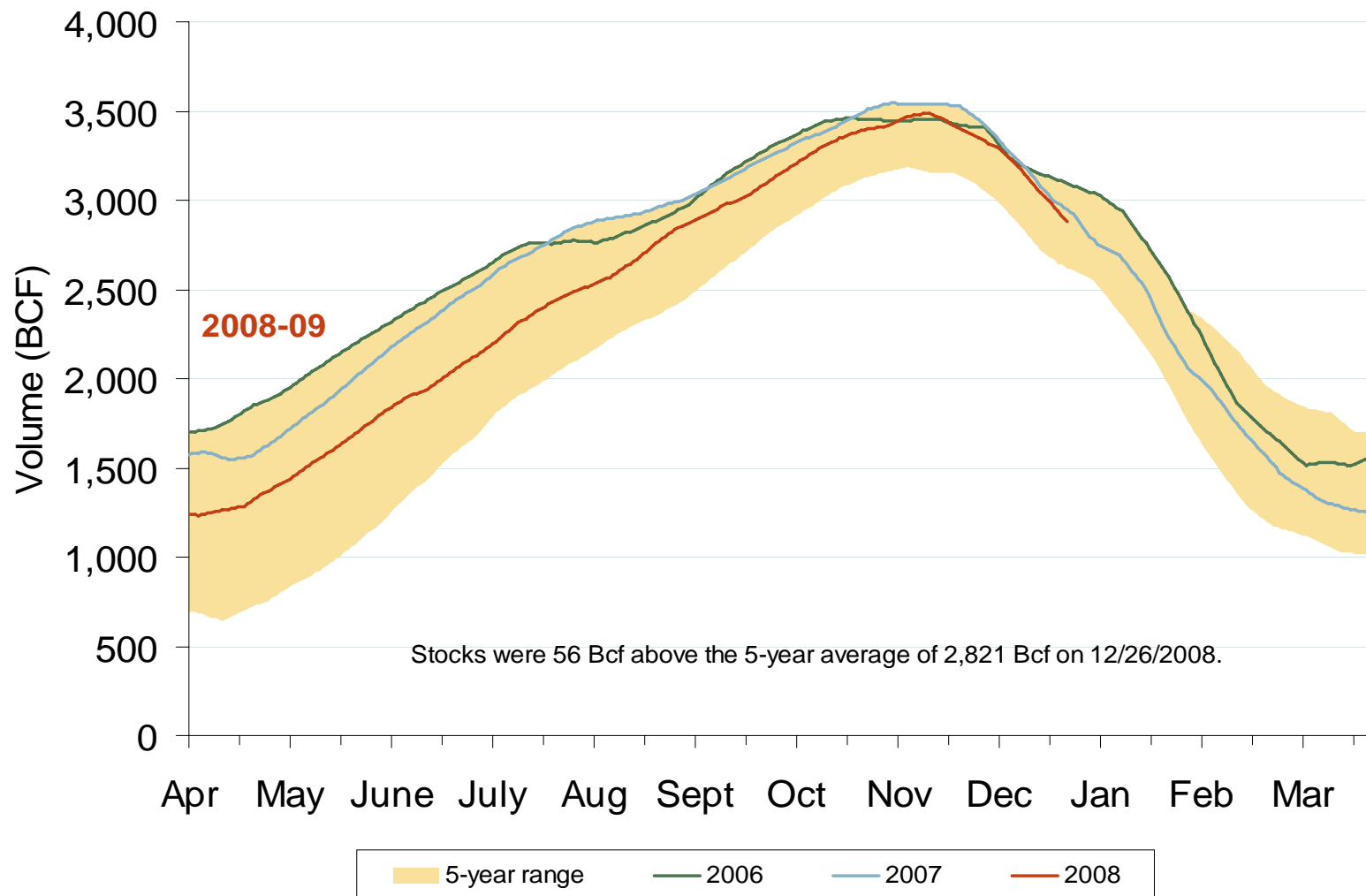


Natural Gas Market National Overview



Total U.S. Working Gas in Storage

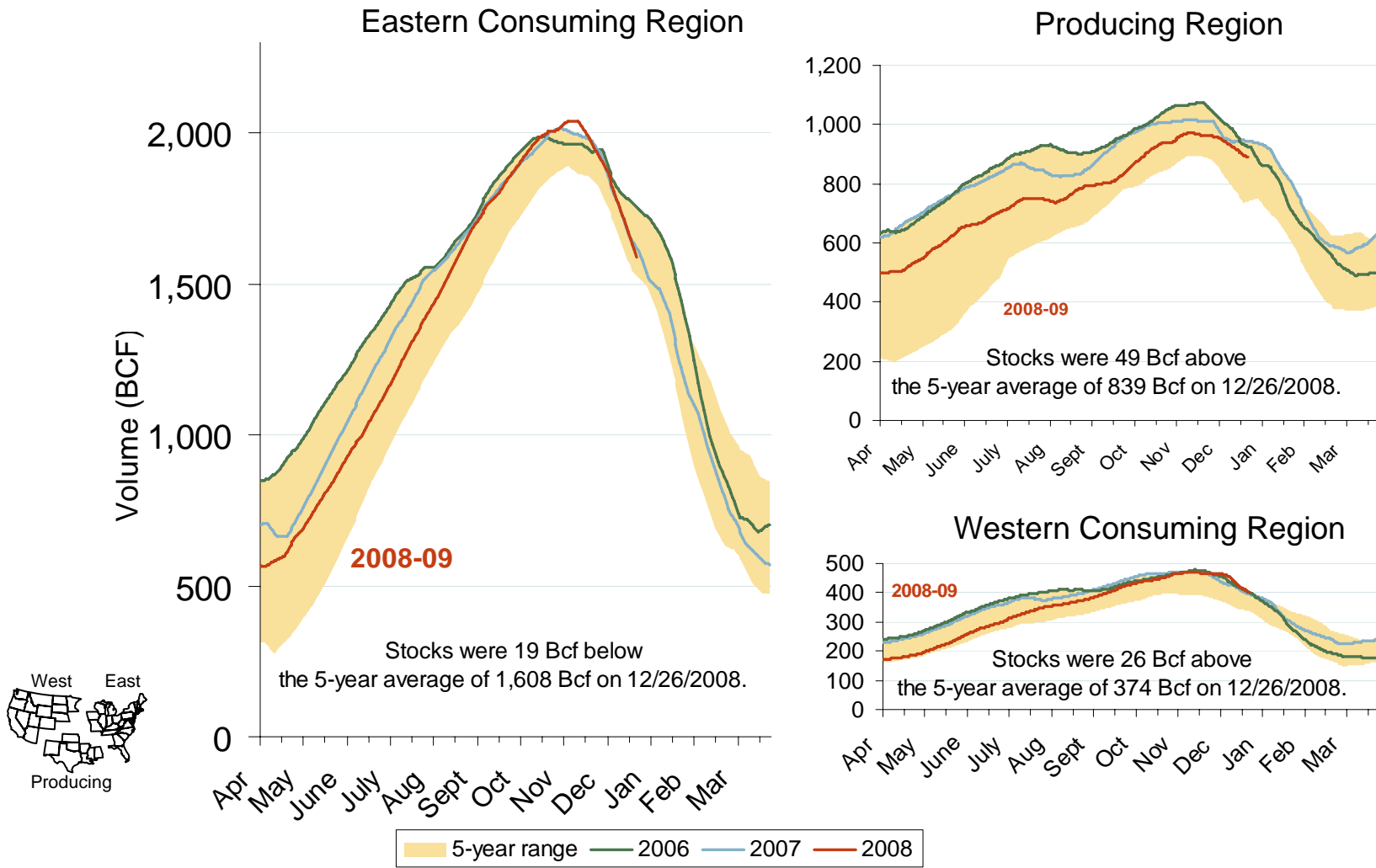


Source: Derived from EIA data.

Updated January 9, 2009

2003

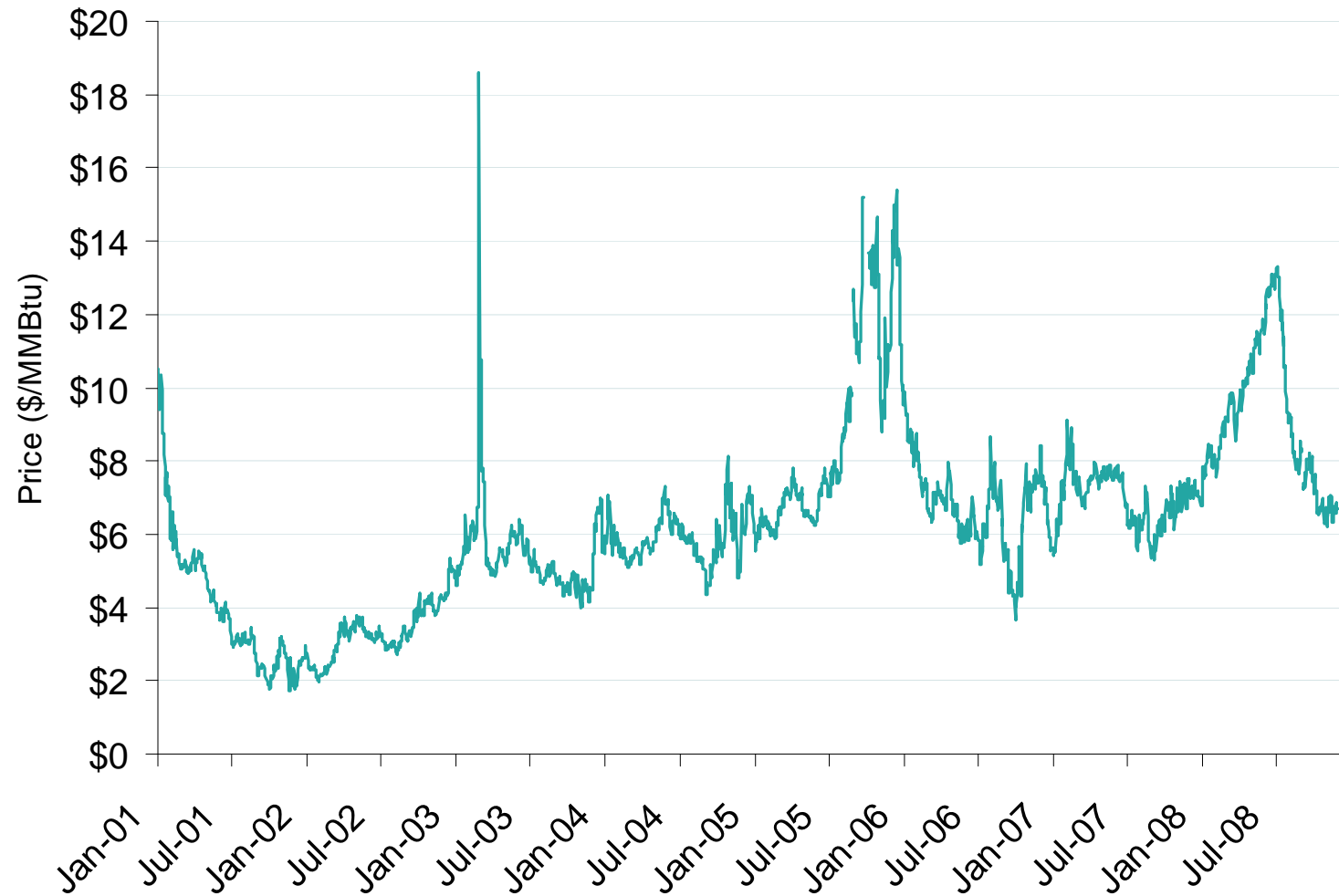
Regional Totals of Working Gas in Storage



Source: Derived from EIA data.

Updated January 9, 2009

Henry Hub Natural Gas Daily Spot Prices 2001-2008



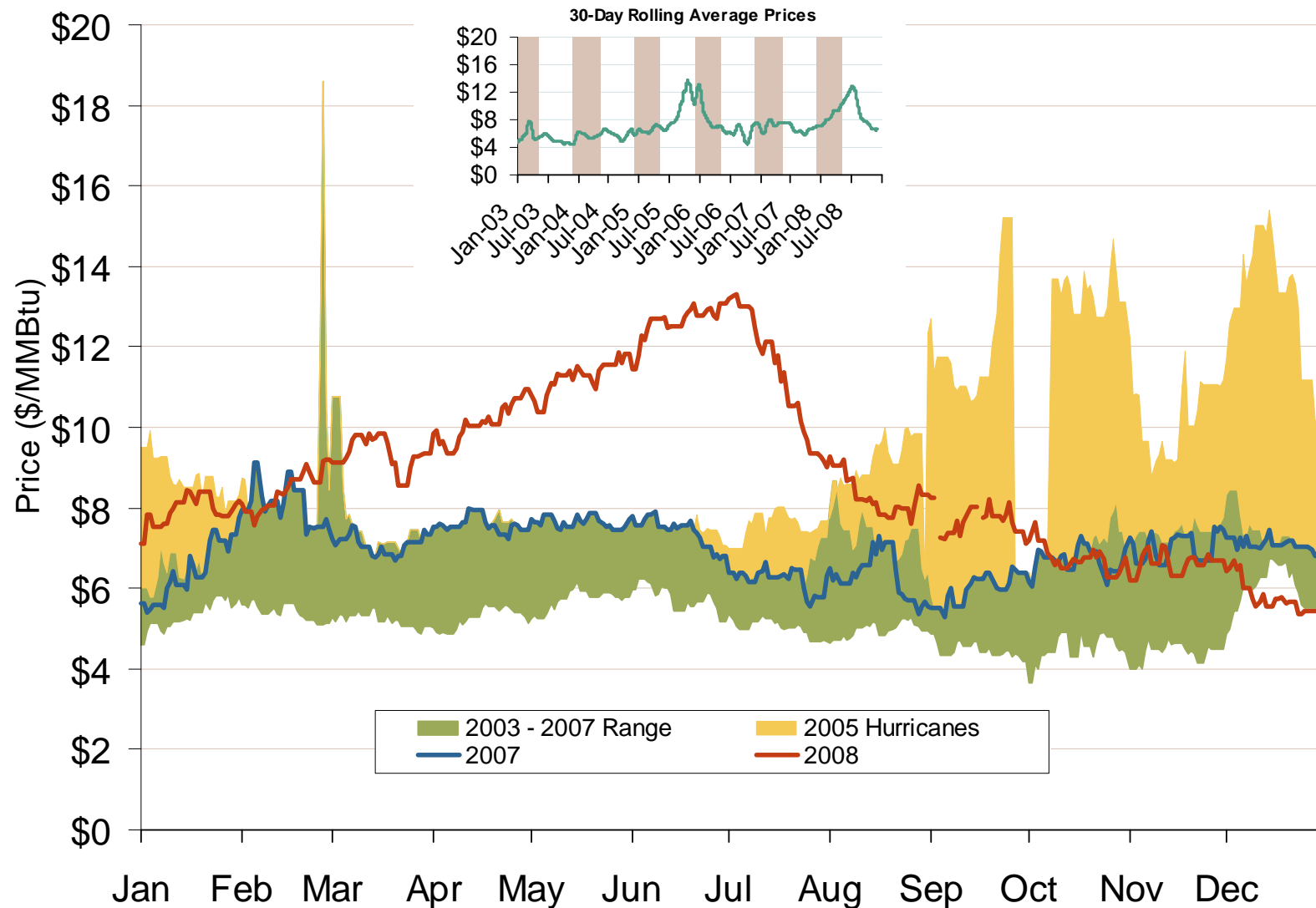
Source: Derived from *Platts* data.

Updated January 9, 2009

2001

Federal Energy Regulatory Commission • Market Oversight @ FERC.gov

Henry Hub Natural Gas Daily Spot Prices 2007, 2008 and 2003-2007 Year Range

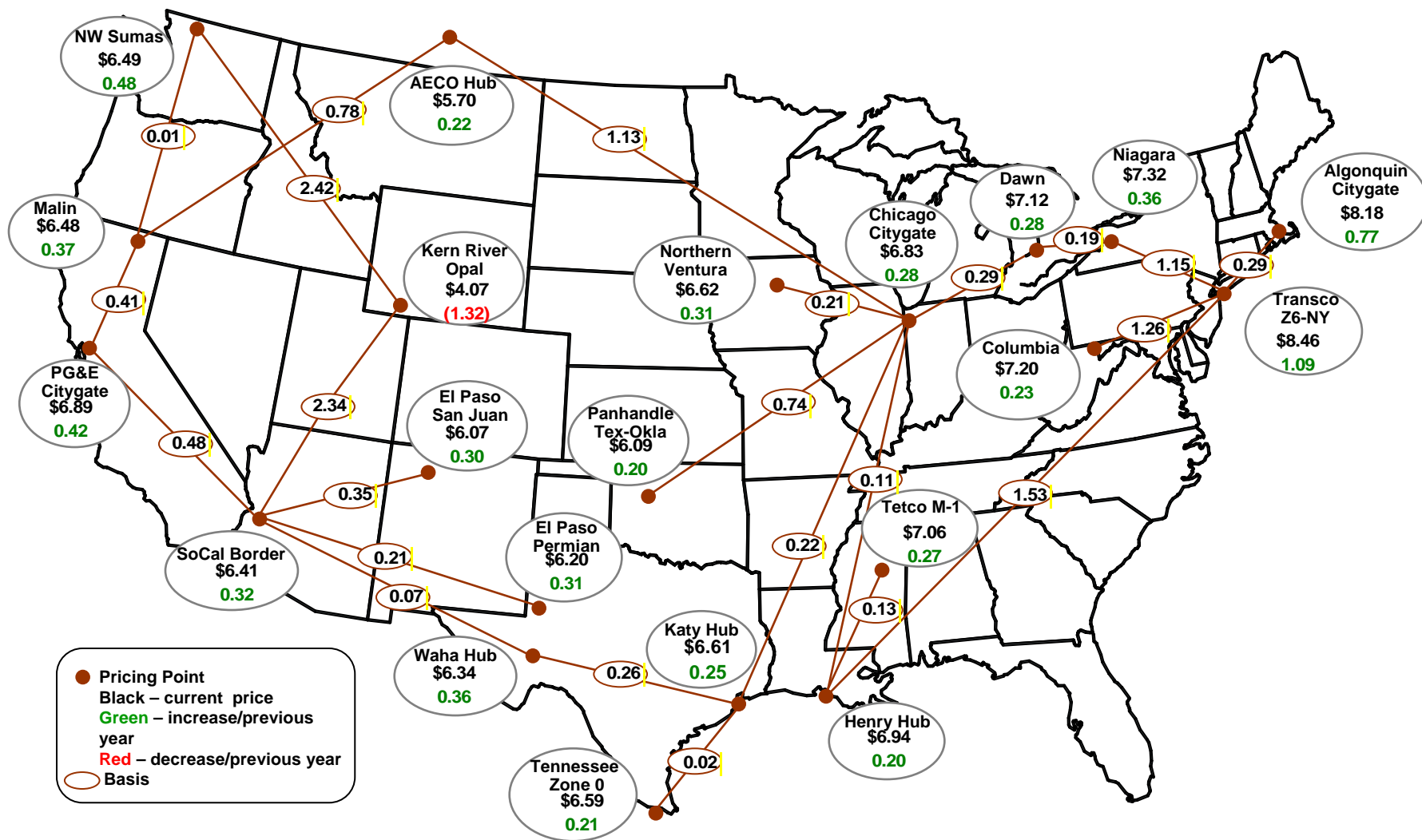


Source: Derived from *Platts* data.

Updated January 9, 2009

2085

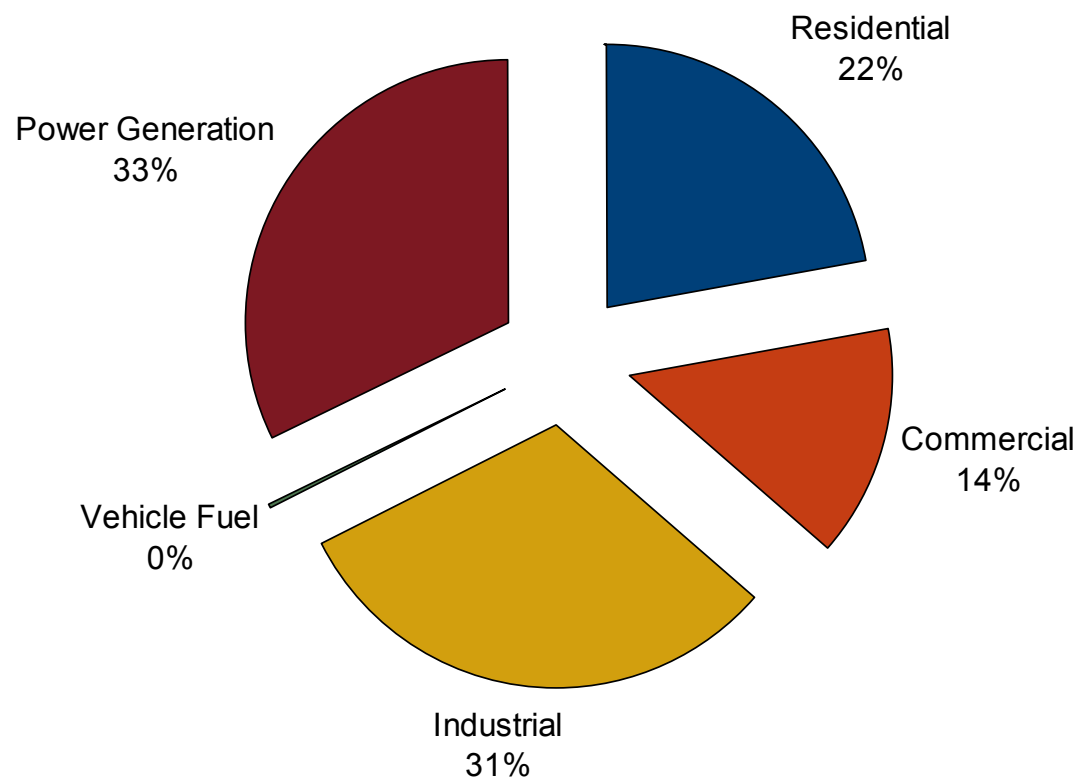
Average Spot Gas Prices, 2007



Source: Platts.

Updated September 17, 2008

U.S. Natural Gas Demand Shares by Sector in 2007

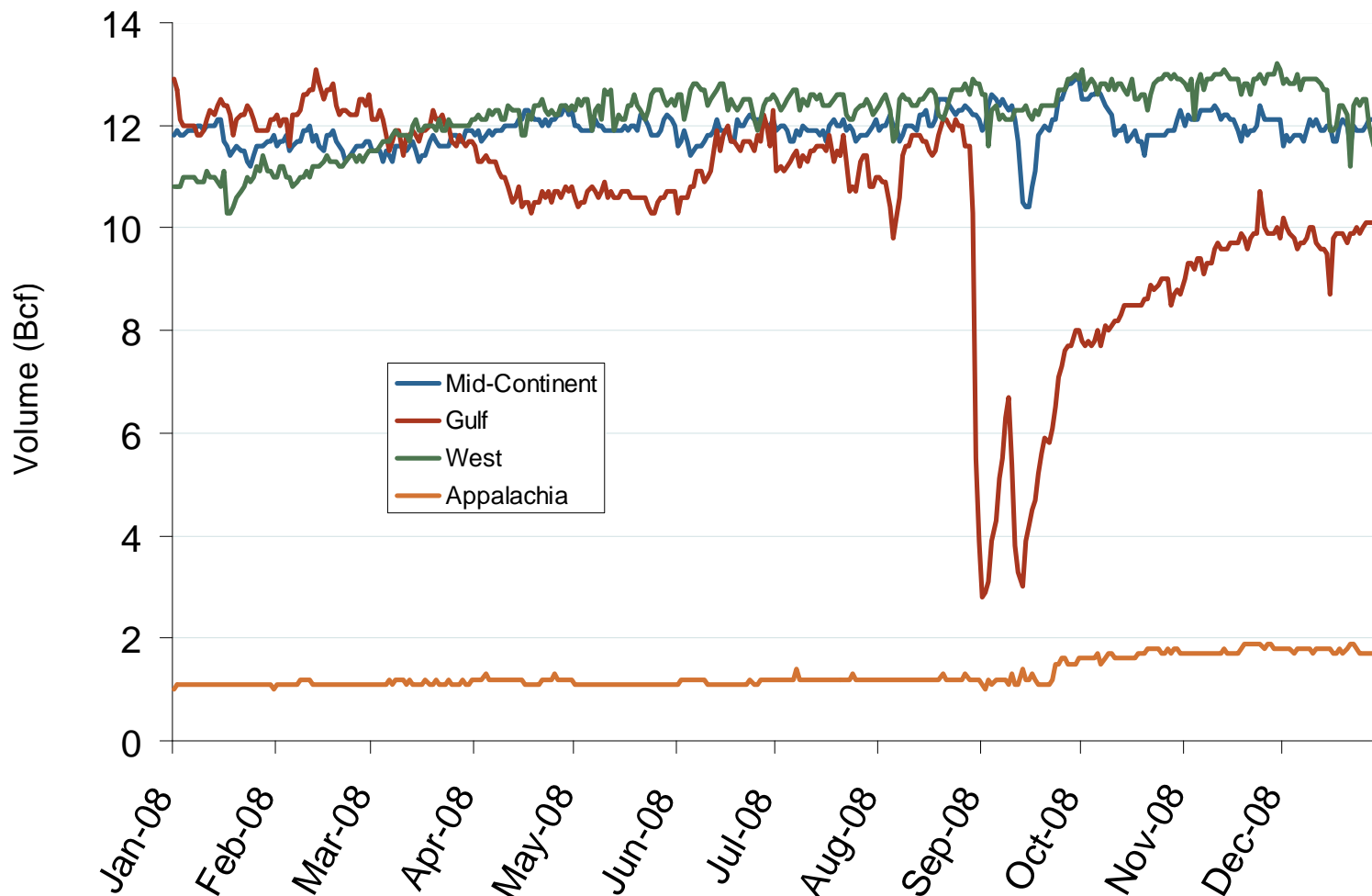


Source: Derived from EIA data.

Updated December 5, 2008

2002

Regional Natural Gas Production for 2008



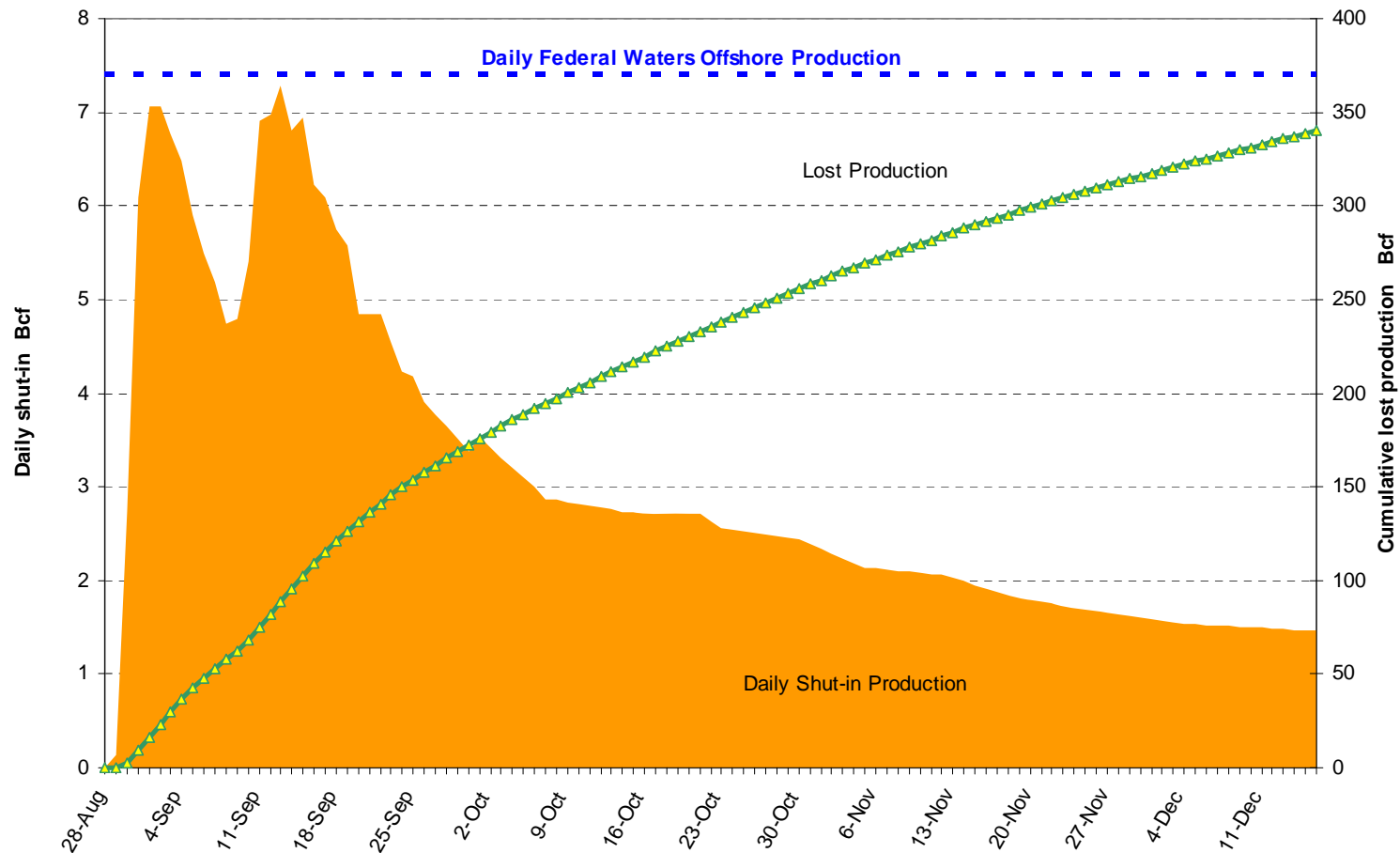
Source: Derived from *Bentek* data.

Updated January 9, 2009

2182

OCS Daily Shut-in and Cumulative Lost Natural Gas Production- Gustav/Ike

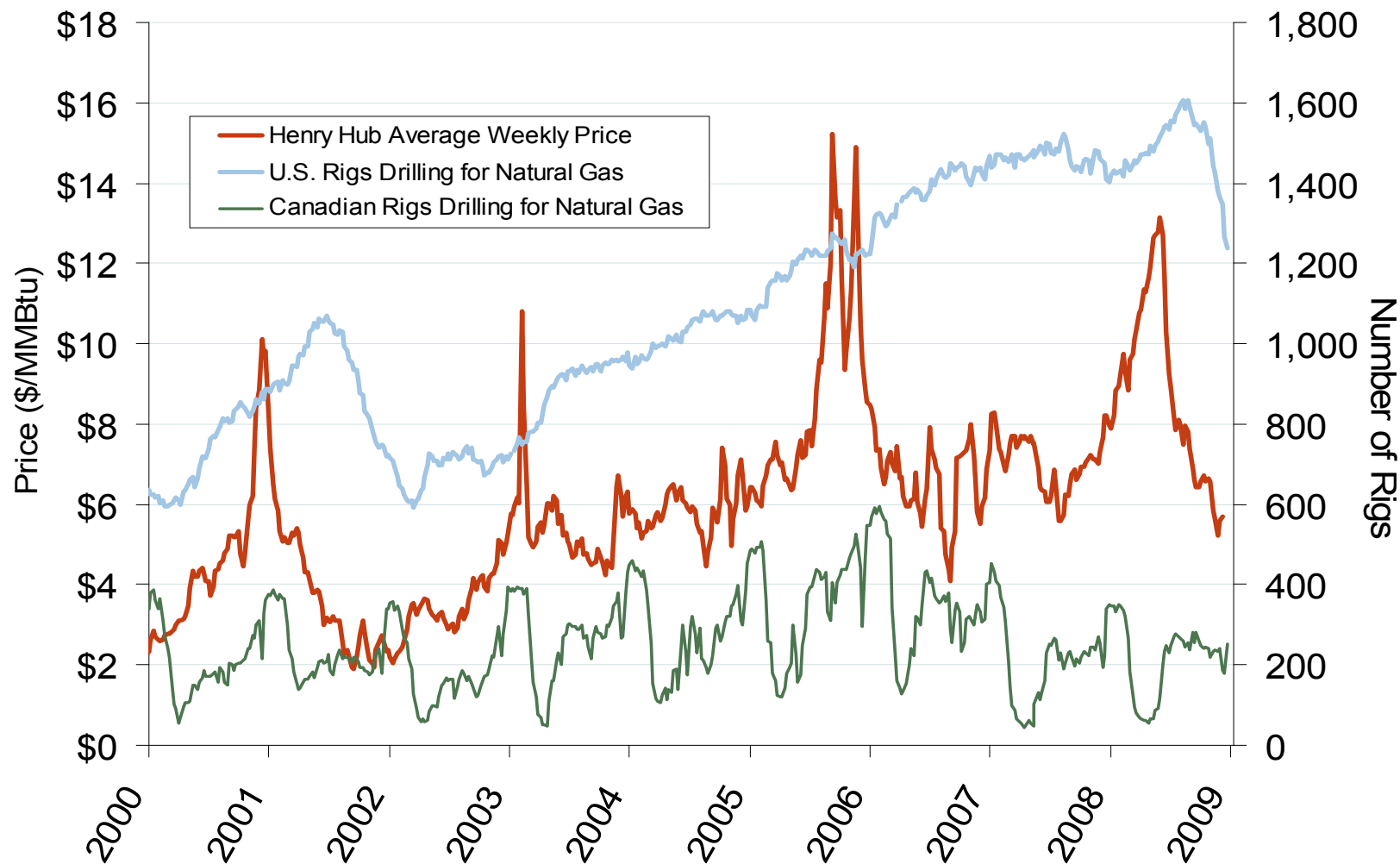
OCS Daily Shut-in and Cumulative Lost Natural Gas Production- Gustav/Ike



Source: Derived from Minerals Management Service data.

Updated January 9, 2009

U.S. and Canadian Natural Gas Drilling Rig Count and Daily Spot Prices

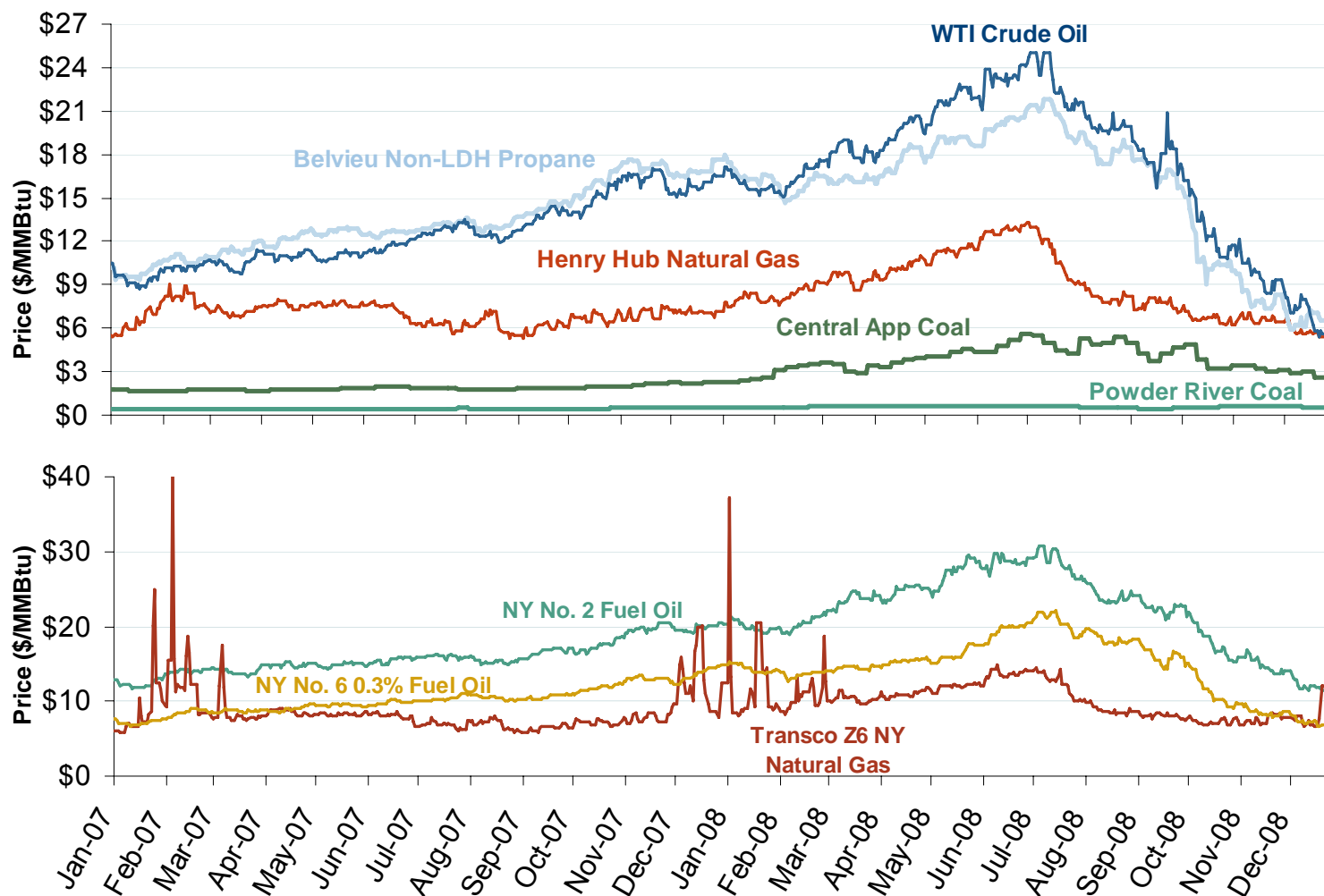


Source: Derived from *Platts* and *Baker Hughes* data.

Updated January 9, 2009

2007

Oil, Coal and Natural Gas Daily Spot Prices

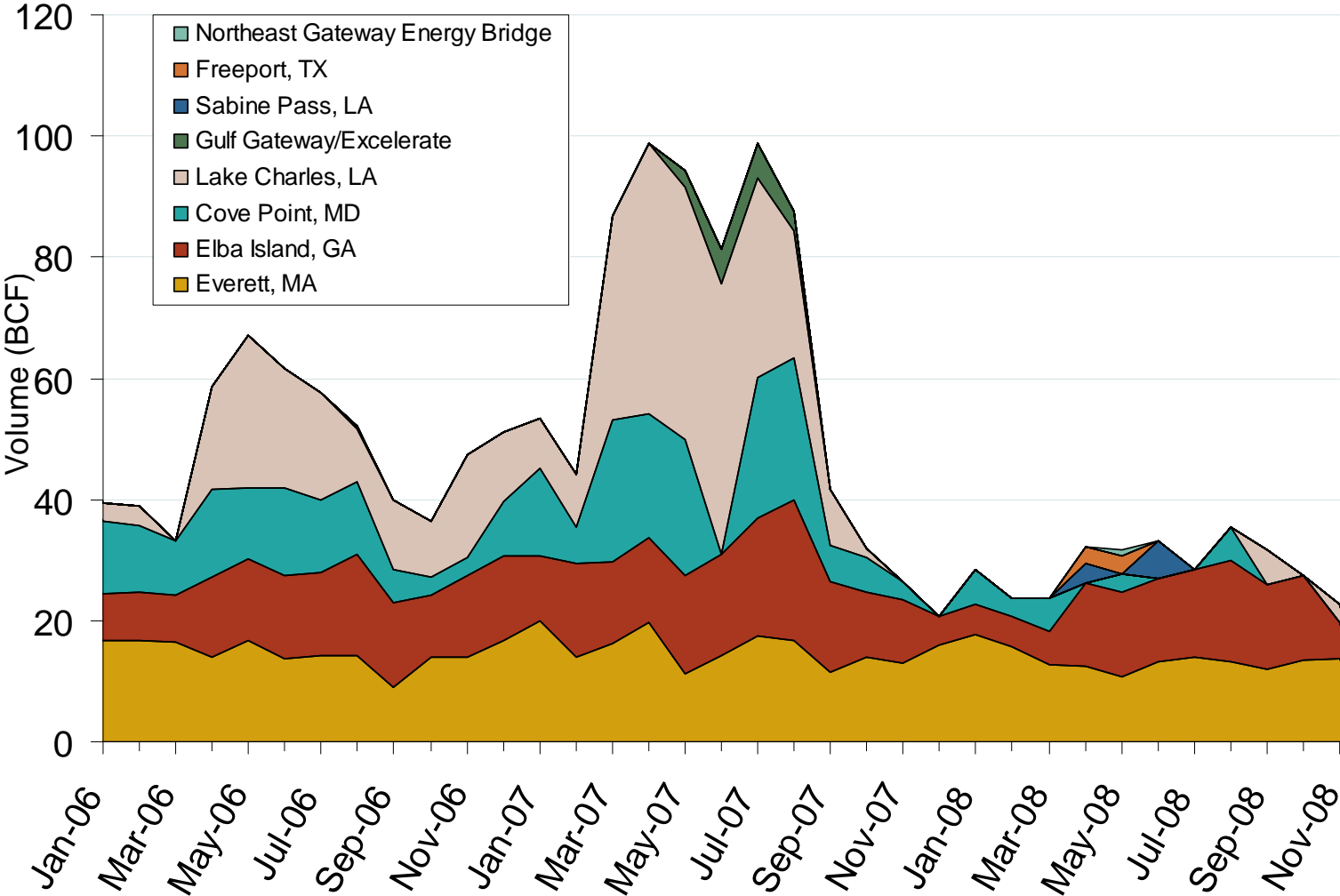


Source: Derived from ICE and Bloomberg data.

Note: Coal prices are quoted in \$/ton. Conversion factors to \$/MMBtu are based on contract specifications of 12,000 btus/pound for Central Appalachian coal and 8800 btus/pound for Powder River Basin coal.

Updated January 9, 2009 2160

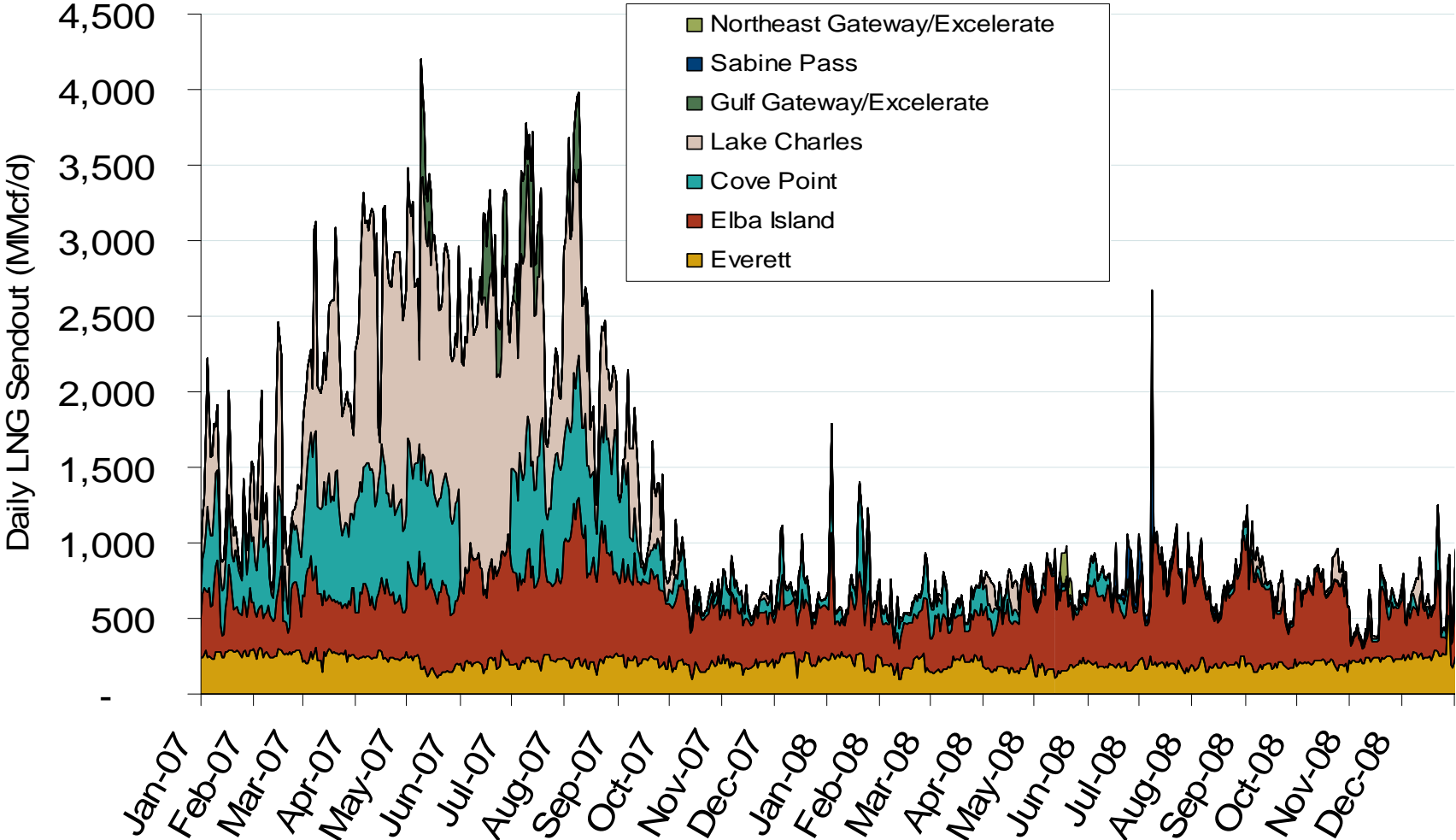
Monthly Gas Imports at Existing U.S. LNG Facilities



Source: Derived from DOE Office of Fossil Energy data.

Updated January 9, 2009

Daily Gas Sendout from Existing LNG Facilities



Source: Derived from *Bentek* data. Excludes Everett LNG delivered via truck and consumed by the Mystic plant as well as Freeport LNG which flows via intrastate pipelines.

Updated January 9, 2009

World LNG Estimated January 2009 Landed Prices

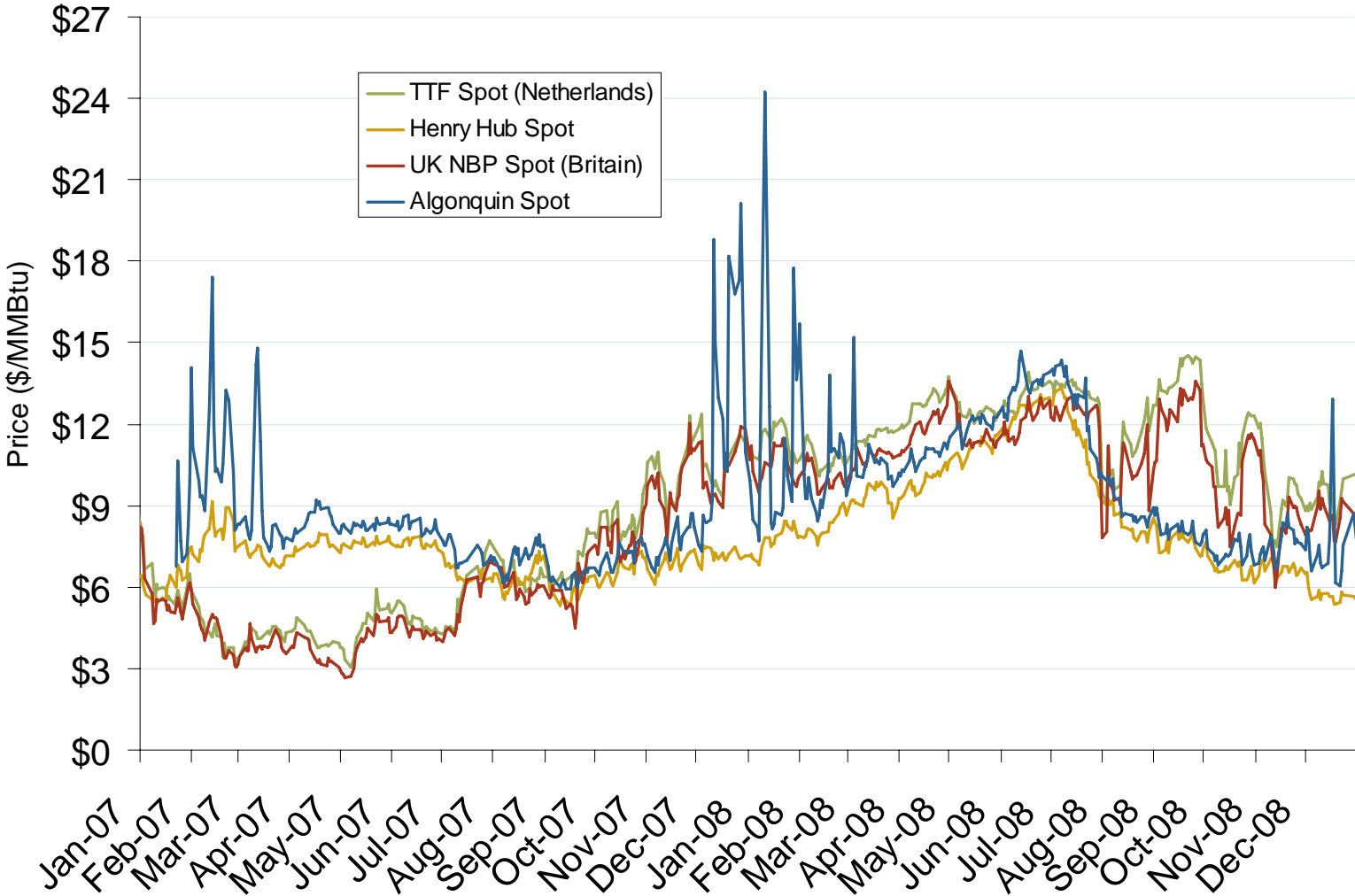


Source: *Waterborne Energy, Inc.* Data in \$US/MMBtu.

Updated January 9, 2009

2169

Atlantic Basin European and US Spot Natural Gas Prices



Source: Derived from Bloomberg and ICE data.

Updated January 9, 2009

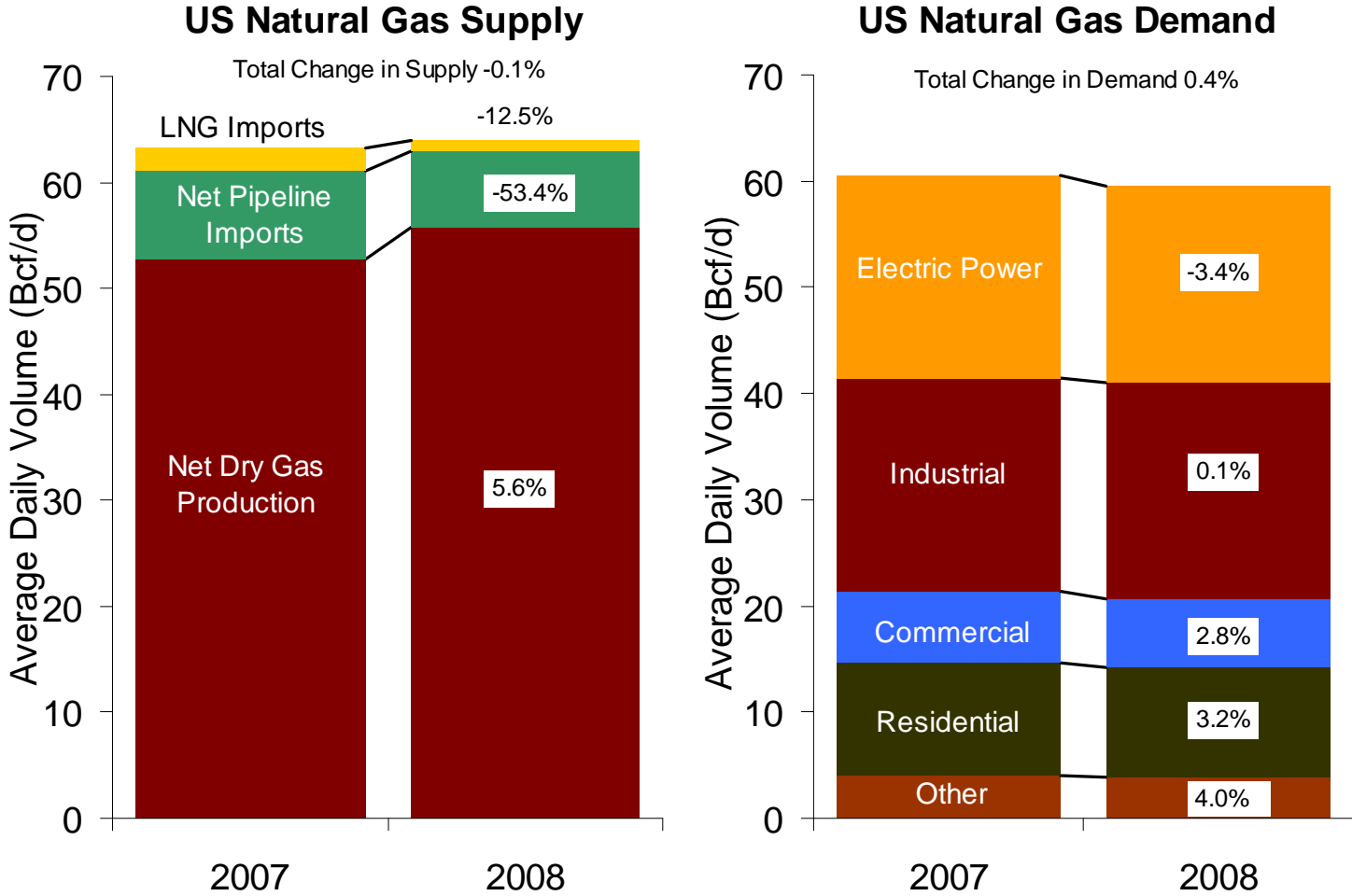
Henry Hub and AECO Prompt-Month Futures Prices



Source: Derived from ICE data.

Updated January 9, 2009

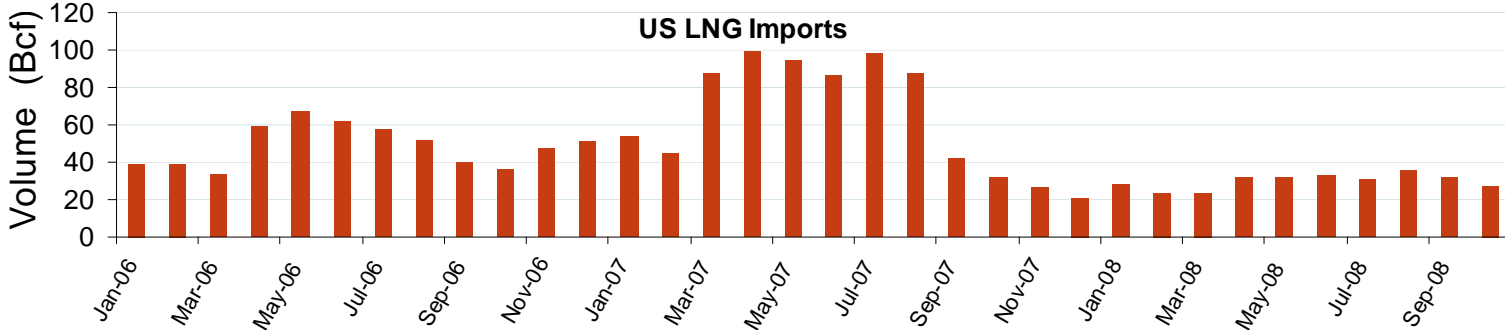
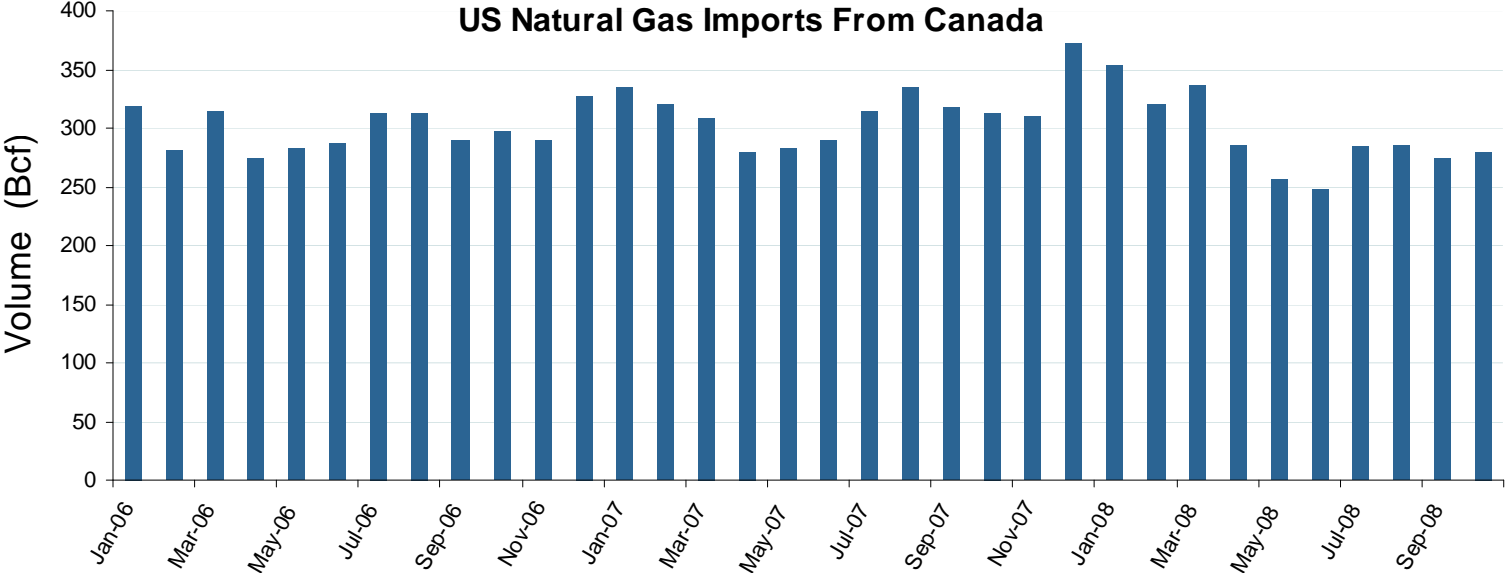
U.S. Natural Gas Supply and Consumption January-November 2008



Source: Derived from EIA/STEO data.

Updated January 9, 2009

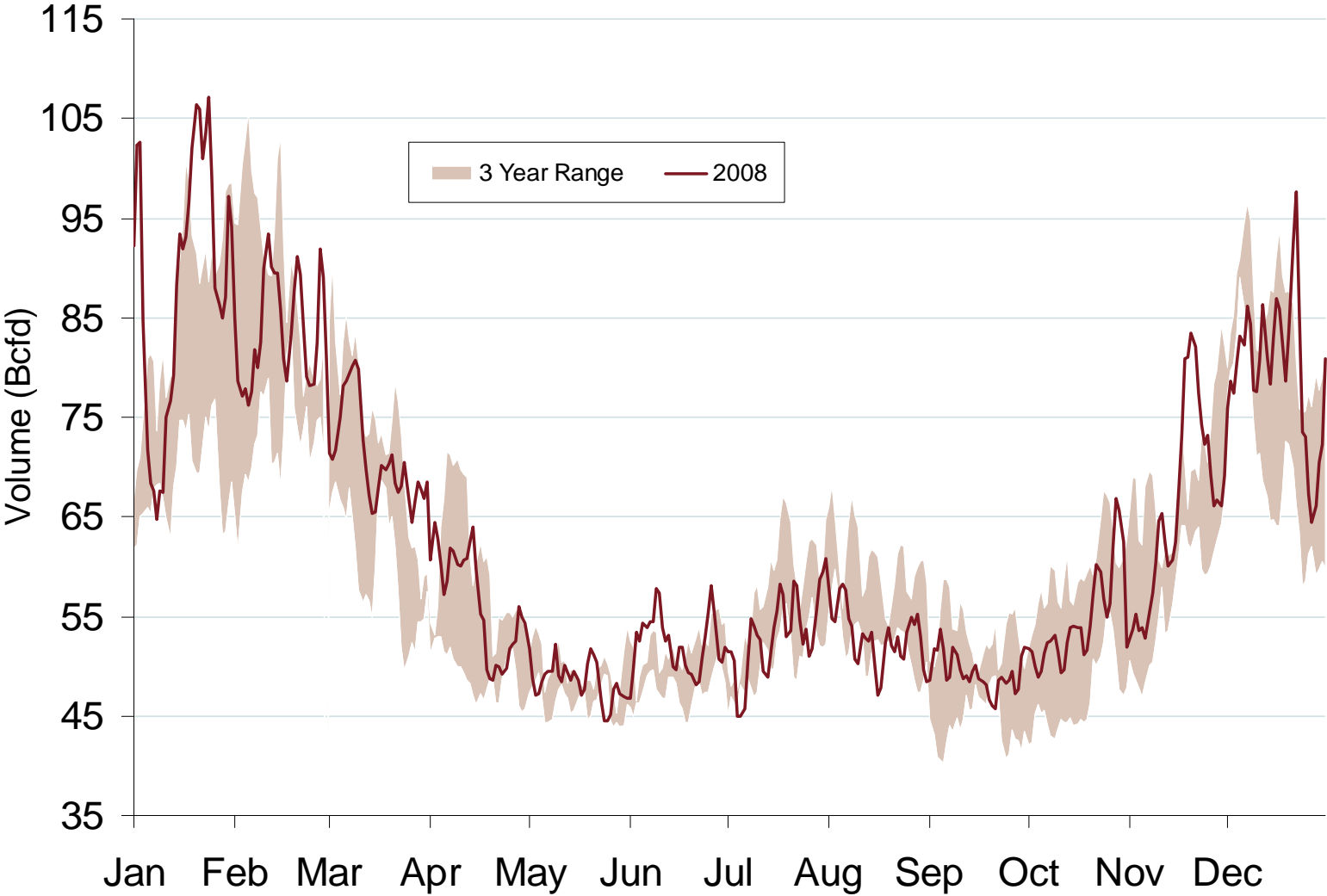
Canadian and LNG Natural Gas Imports



Source: EIA Natural Gas Monthly

Updated January 9, 2009

Total U.S. Natural Gas Demand (All Sectors)

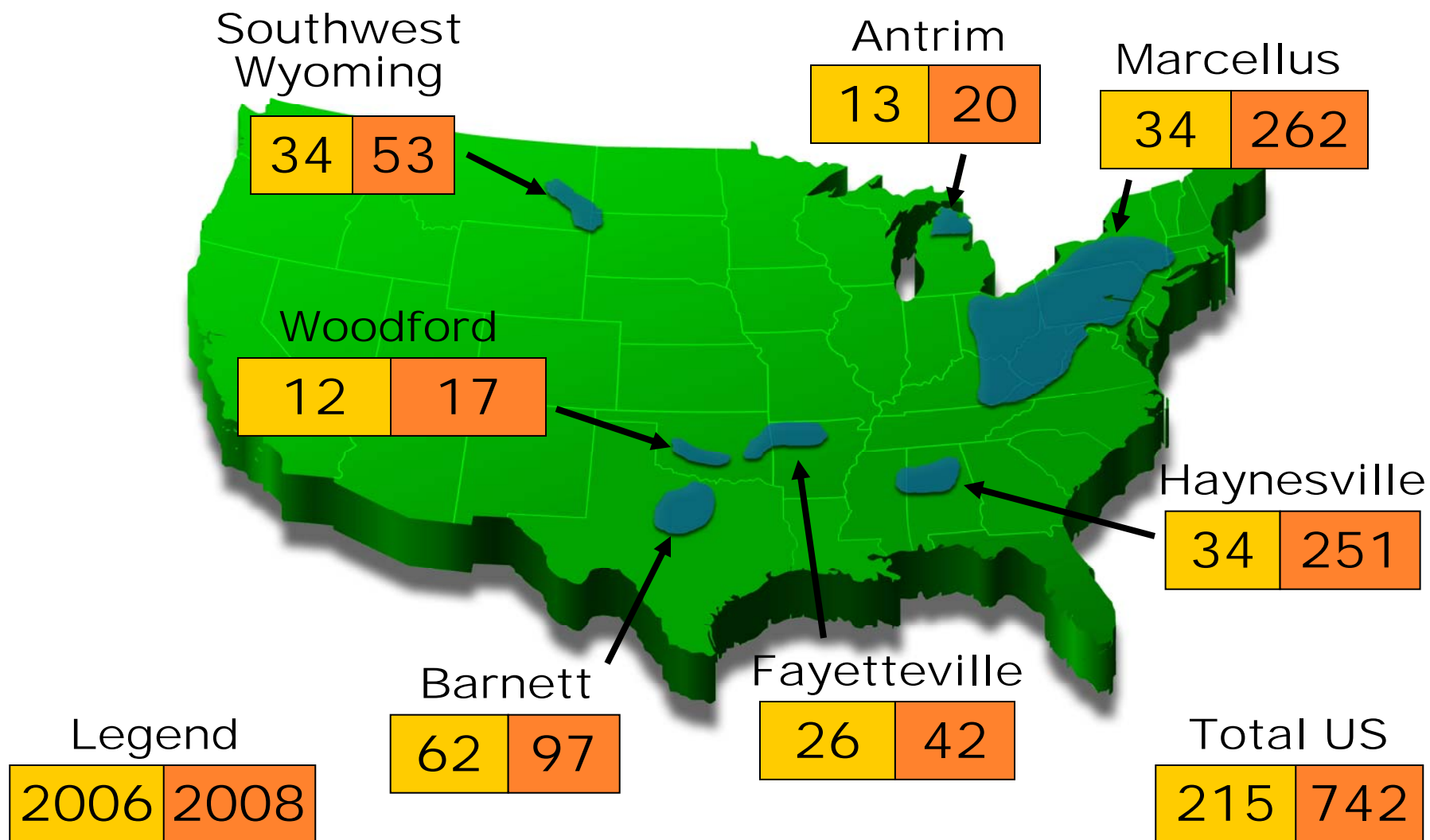


Source: Derived from *Bentek Energy* data.

Updated January 9, 2009

20009

Estimated Recoverable NG For Select Shale Basins (TCF)



Source: Derived From American Clean Skies Foundation

Updated November 18, 2008

20010