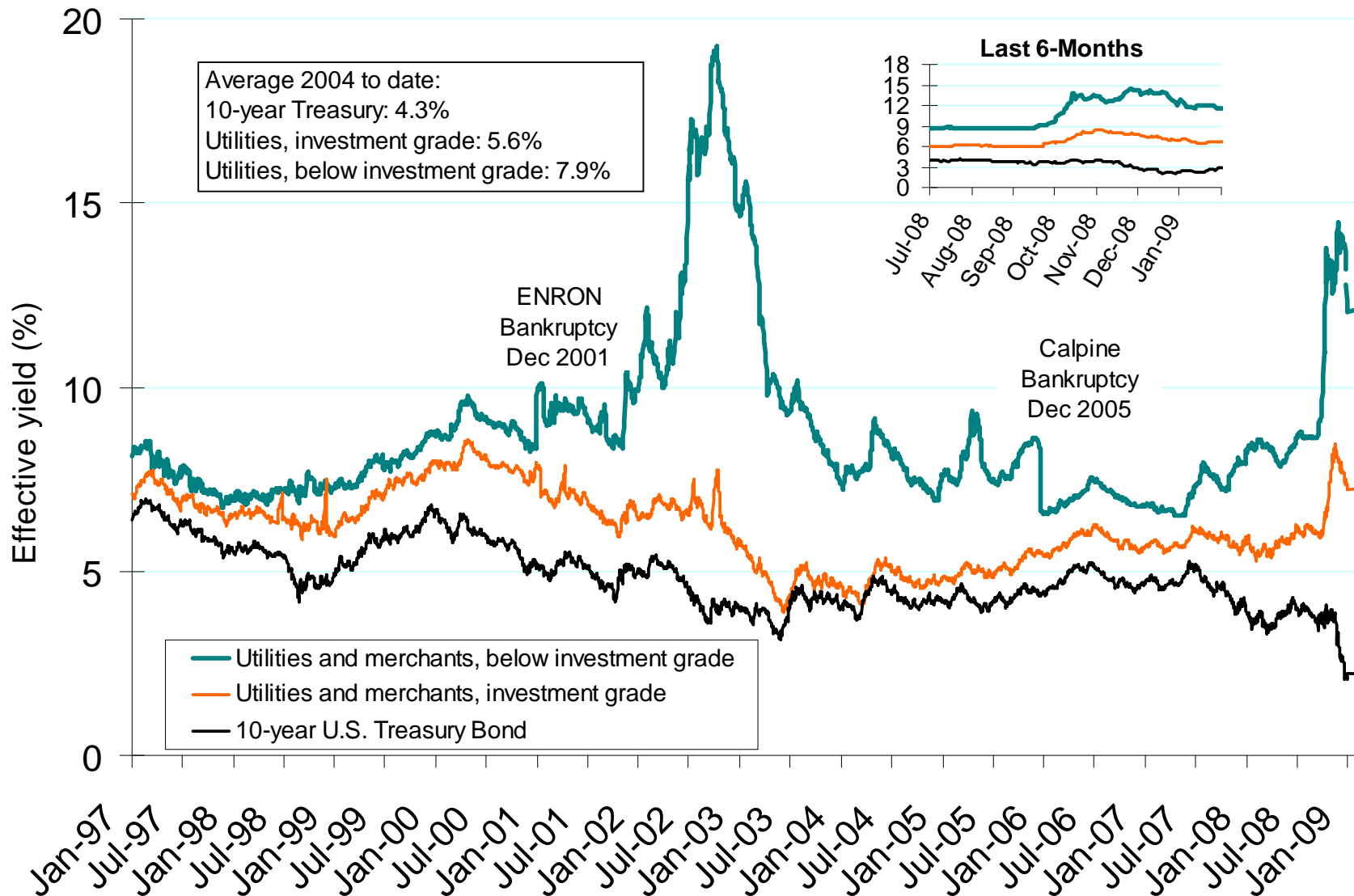


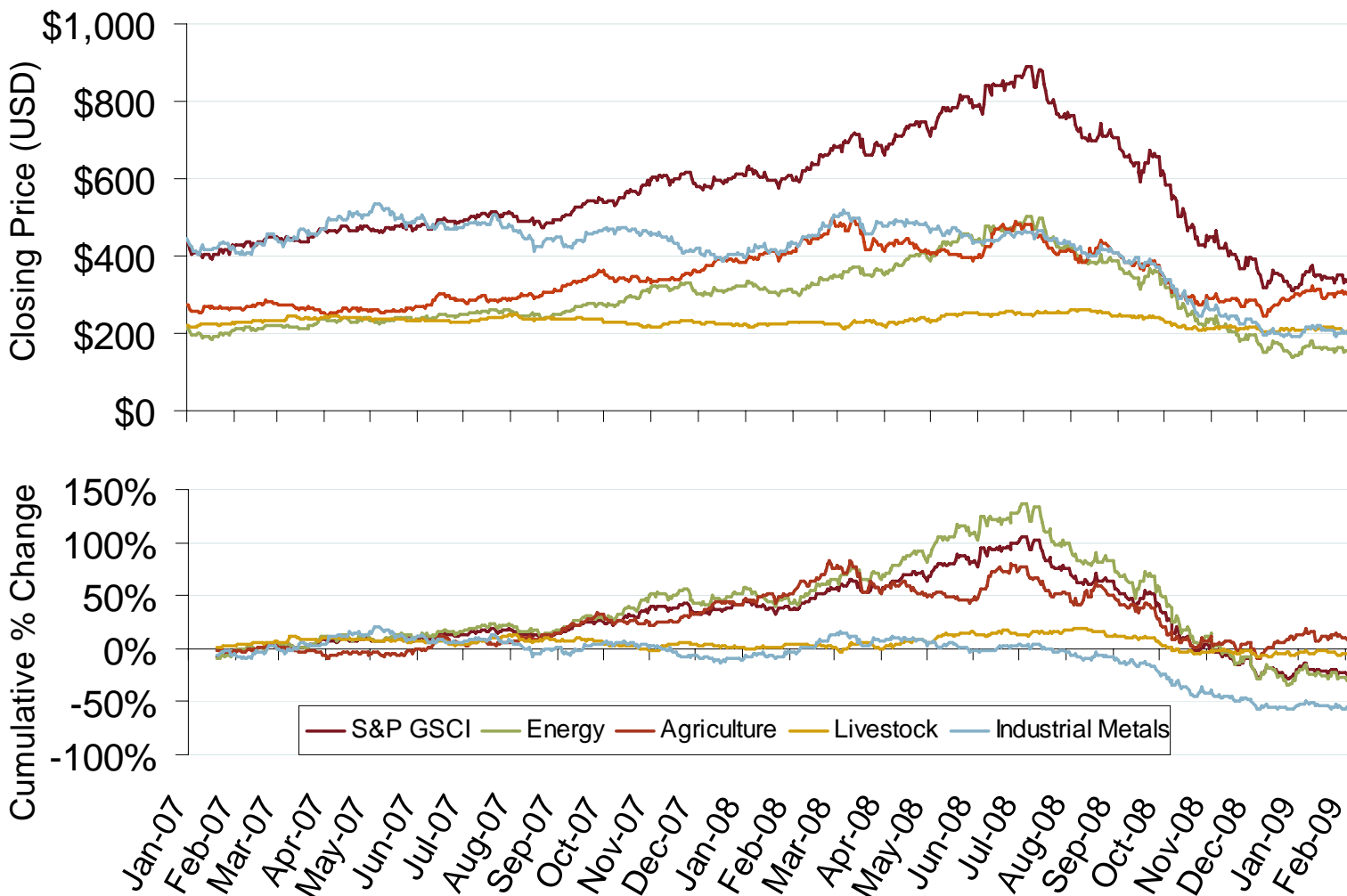
Yields of Utilities, Merchants and Ten Year Treasury Bonds



Source: Derived from Merrill Lynch Index U.S Corporates, Gas and Electric Utilities and Bloomberg data.

Updated February 6, 2009

S&P Goldman Sachs Commodity Index Official Closing Price

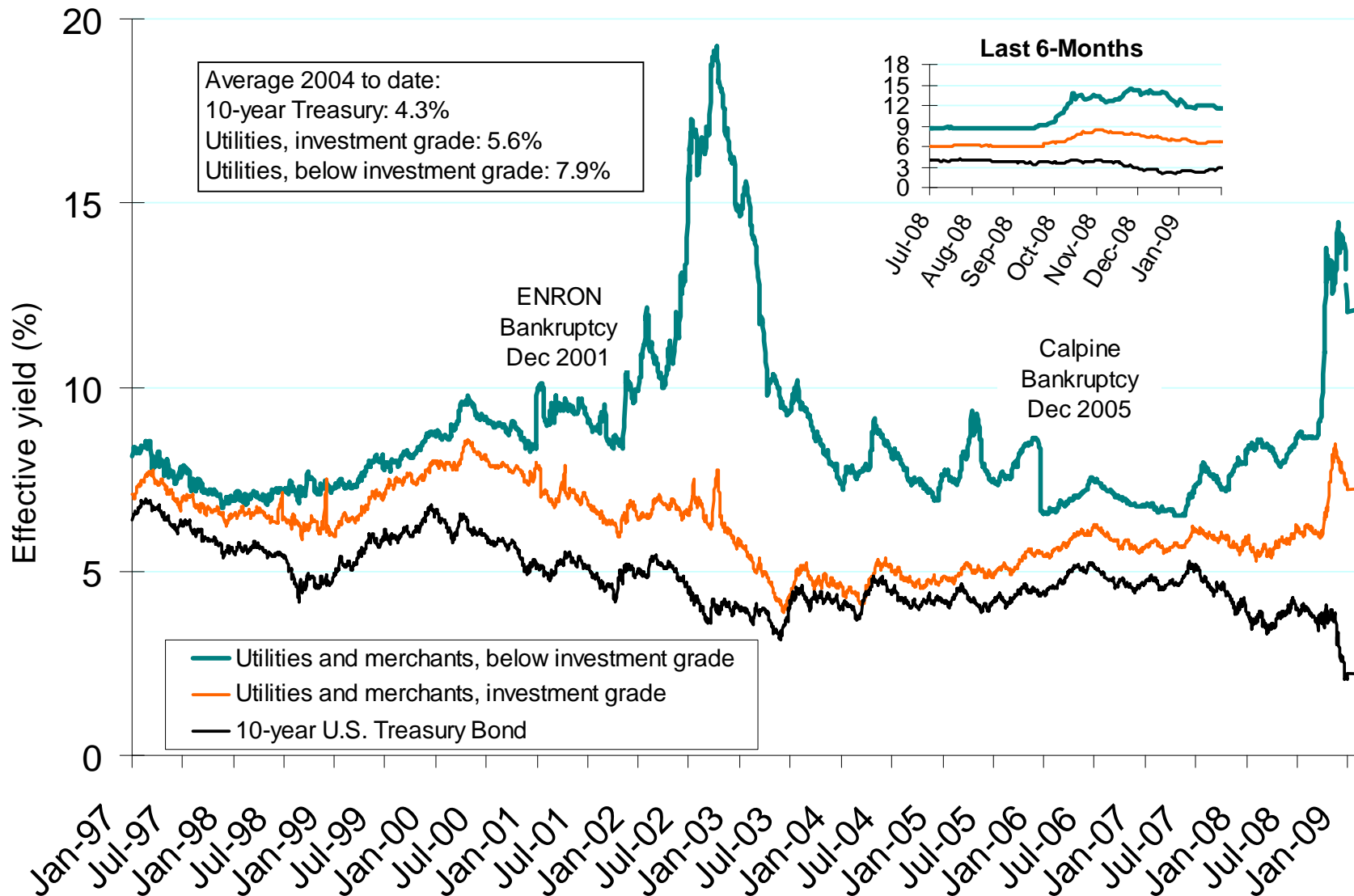


Source: Bloomberg Data

Updated February 6, 2009

3033

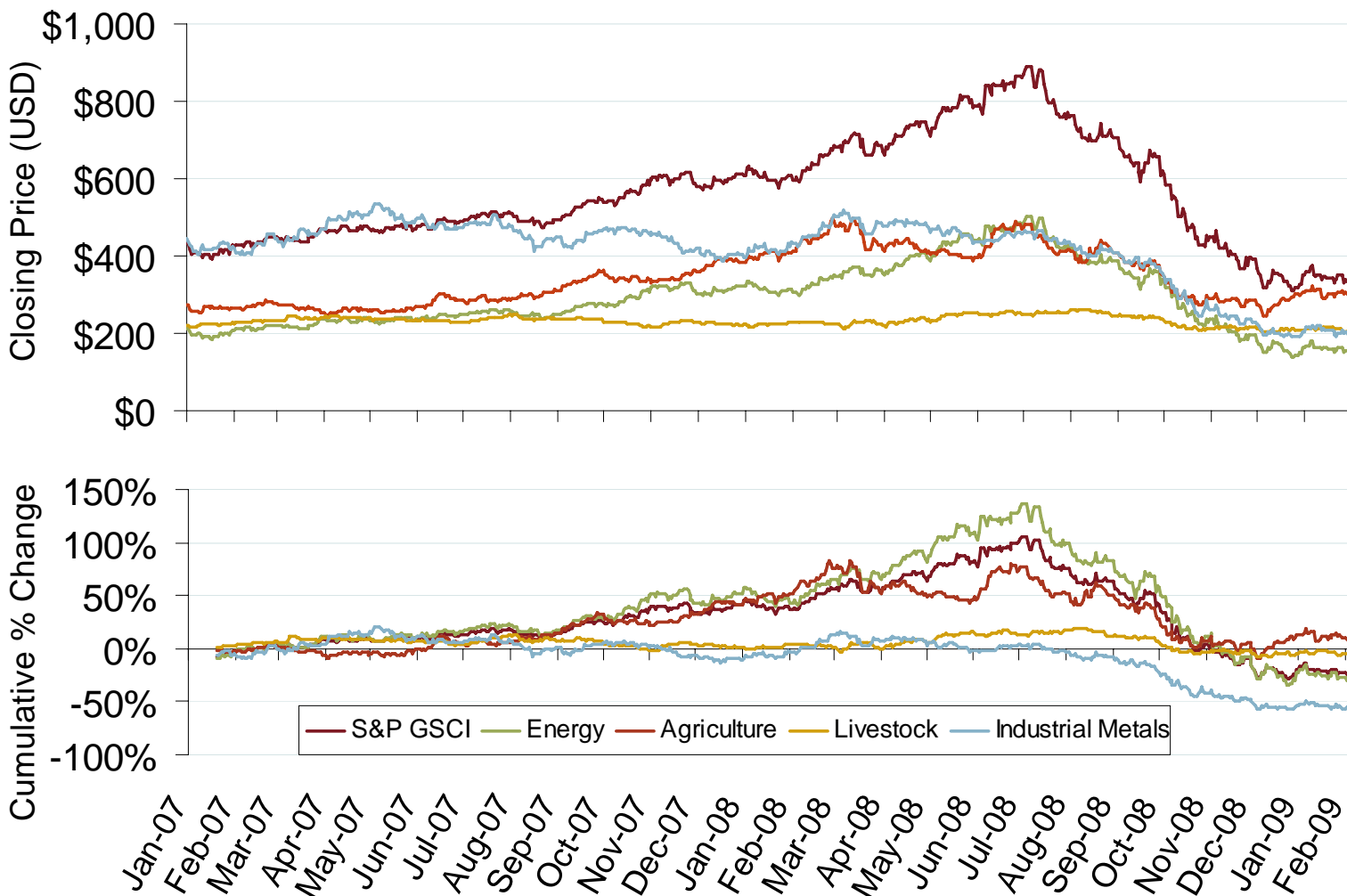
Yields of Utilities, Merchants and Ten Year Treasury Bonds



Source: Derived from Merrill Lynch Index U.S Corporates, Gas and Electric Utilities and Bloomberg data.

Updated February 6, 2009

S&P Goldman Sachs Commodity Index Official Closing Price

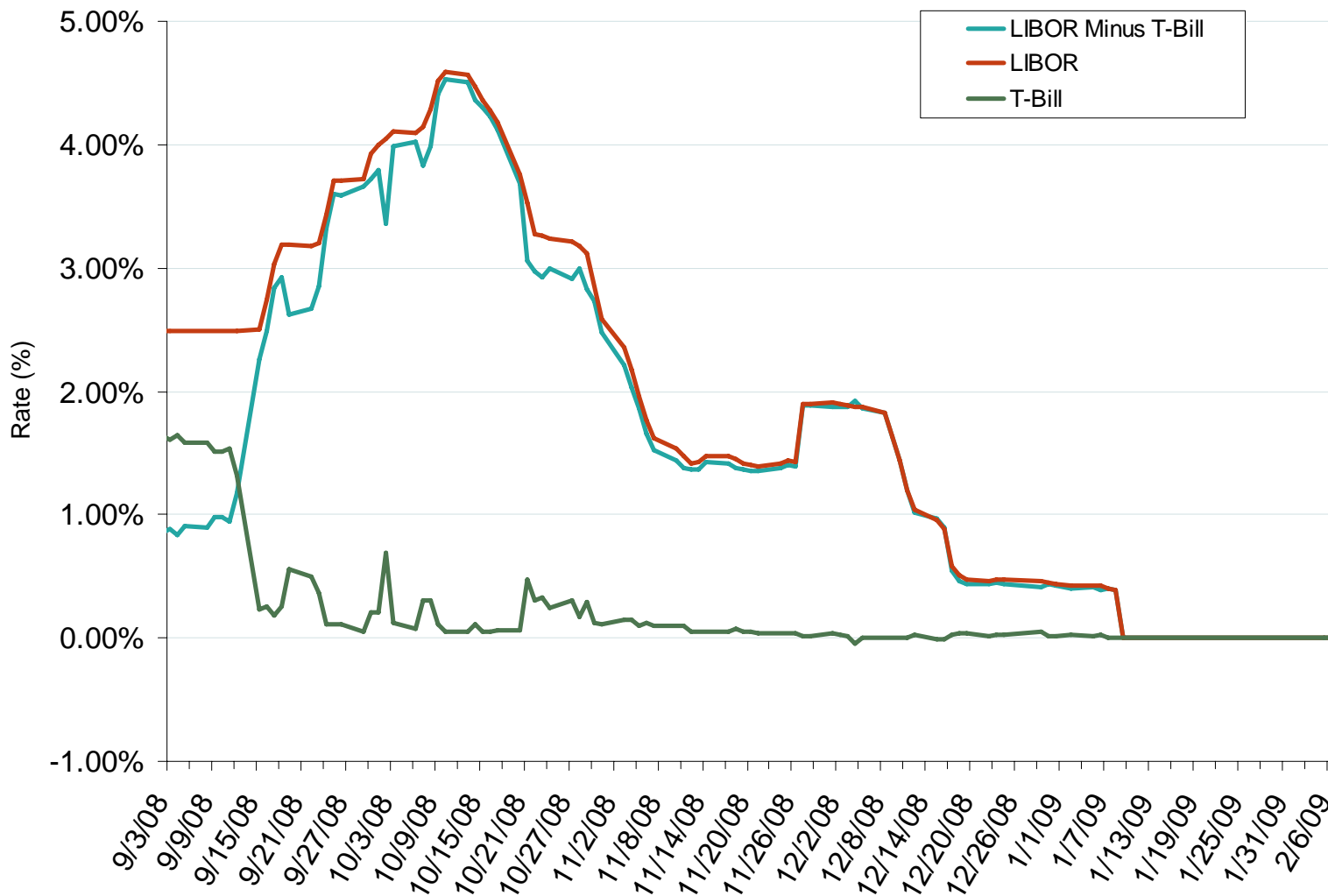


Source: Bloomberg Data

Updated February 6, 2009

3033

One Month LIBOR and One Month US Treasury Bill Rates

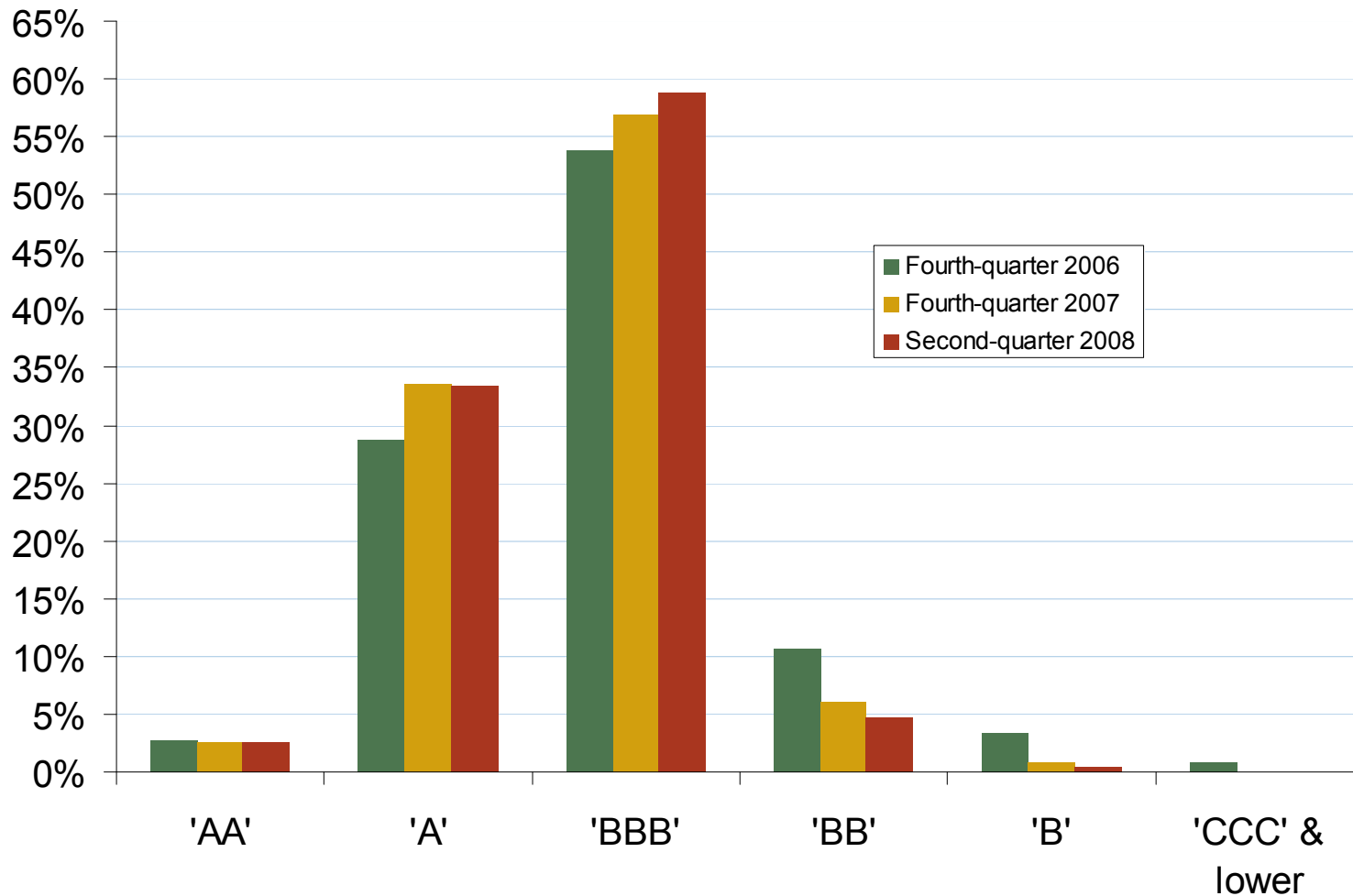


Source: Derived from Bloomberg data.

Updated February 6, 2009

33550

U.S. Electric and Gas Utility Ratings Distribution



Source: Derived from Standard and Poors data.

Updated November 7, 2008

33551