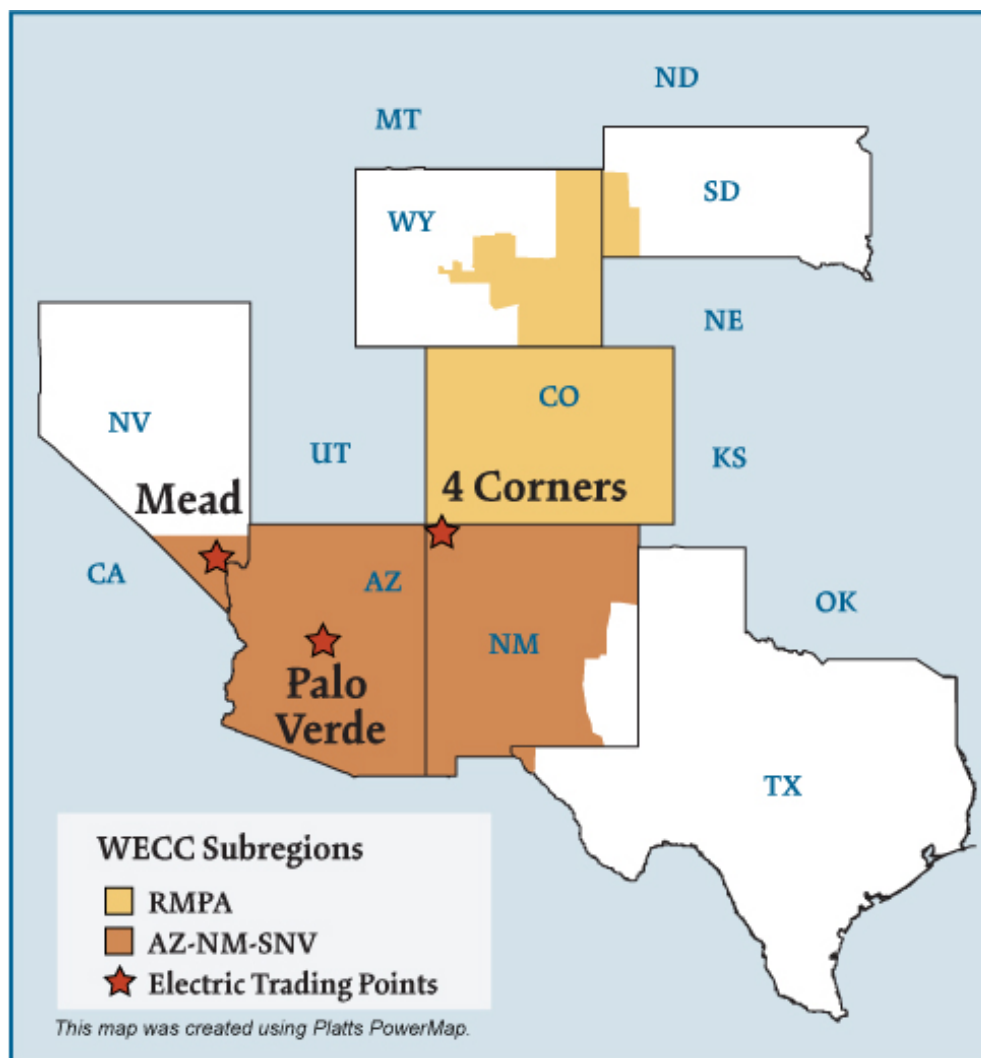


Southwest Electric Regions



Federal Energy Regulatory Commission • Market Oversight @ FERC.gov**Overview****Geography**

States covered: All or most of Arizona, New Mexico, Colorado and parts of Nevada, Wyoming and South Dakota.

Reliability region: Rocky Mountain Power Area (RMPA) and Arizona/New Mexico/Southern Nevada Power Area (AZNMSNV) sub-regions of the Western Electric Coordinating Council (WECC)

Balancing authorities: See list on page 5.

Hubs: Four Corners, Mead, Palo Verde

RTO/ISO

None

Generation/Supply

Marginal fuel type: Natural gas

Generating capacity: 45,459 MW (2005)

Capacity reserve: 8,940 MW (2005)

Reserve margin: 24% (2005)

The region has a surplus of generating capacity, with much of the generation in Arizona and the Four Corners area. Transmission capacity to the California market is often fully utilized in the high load periods of the summer. In 2005, the regional reserve margin decreased from 2004 as demand growth outpaced supply additions.

Federal Energy Regulatory Commission • Market Oversight @ FERC.gov

Demand

Peak demand: 36,519 MW (2005)

Peak demand growth: 3.5% (2004–2005)

Prices

Annual Average of Daily Bilateral Day Ahead On-Peak Prices

Platts "Palo Verde" Index

2004: \$50.09/MWh

2005: \$67.62/MWh

2006: \$57.79/MWh

Prices increased in 2005 as a result of disturbances to the natural gas market. Prices declined in 2006 as natural gas storage levels remained above historical ranges throughout the injection season (April through October).

Physical and financial electricity products are actively traded through brokers with the Palo Verde, Four Corners, and Mead hubs as pricing points.

Interconnections/Seams

Generation suppliers export excess power to the rest of the West and particularly to California.

Focal Points

Severe Heat Wave: In late July 2006, a severe heat wave resulted in 100+ degree temperatures over much of the West - and up to 113 degrees in Las Vegas and 118 degrees in Phoenix. Between July 12 and July 26, peak load records were set by customers of utilities (e.g., Nevada Power, Arizona Public Service, and Tucson Electric Power). While the regional wholesale market tightened because of concurrent high demand in California and the Northwest, Southwest suppliers were able to meet regional loads and still export to California. Some merchant generating stations such as Harquahala saw increased production compared to the previous summer. Power prices in the Southwest bilateral markets spiked to over \$350/MWh on July 24, the date that CAISO declared a Stage 2 Emergency - CAISO's call for critical conservation due to very tight power supplies in its control area.

New Energy Company: According to a company press release, PNM Resources, Inc., a holding company for utility and energy service companies in New Mexico and Texas, and Cascade Investment, L.L.C., a private investment firm for Microsoft founder Bill Gates, agreed to create an unregulated energy company to serve energy markets in the West and in Texas. PNM Resources and a Cascade Investment subsidiary planned to have a 50 percent ownership interest in the new company. Representatives stated that the new company would form business lines to serve competitive retail electricity sales, operation and ownership of generation, and wholesale marketing and trading. At the time of the November 2006 announcement, Cascade Investment owned approximately 6.5 million, or 9.4 percent, of PNM Resources' common stock shares.

Balancing Authorities in the Southwest Electric Market

WECC Subregion and Balancing Authority

NERC Acronym

AZNMSNV

Arizona Public Service Company
 DECA, LLC - Arlington Valley
 El Paso Electric Company
 Gila River Maricopa Arizona
 Harquahala L.L.C.
 Imperial Irrigation District
 Nevada Power Company
 Public Service Company of New Mexico
 Salt River Project
 Tucson Electric Power Company
 Western Area Power Administration - Lower Colorado

AZPS
 DEAA
 EPE
 GRMA
 HGMA
 IID
 NEVP
 PNM
 SRP
 TEPC
 WALC

RMPA

Public Service Company of Colorado
 Western Area Power Administration - Colorado-Missouri

PSCO
 WACM

Supply and Demand Statistics for the Southwest

Supply Demand Statistics			
	2003	2004	2005
Summer Generating Capacity MW	41,646	45,588	45,459
Summer Peak Demand MW	35,815	35,280	36,519
Summer Reserves MW	5,831	10,308	8,940
Summer Reserve Margin:	16%	29%	24%
Annual Load (GWh):	177,401	180,154	185,730
Annual Net Generation GWh	NA	NA	NA

Source: Derived from WECC data.

Updated February 2, 2007

1064

Yearly Average of Bilateral DA Prices – On-Peak

Annual Average Day Ahead Prices (\$/MWh)			
	2005	2006	5 Years
Palo Verde	\$67.62	\$57.79	\$51.44
Four Corners	\$69.45	\$58.60	\$51.97
Mead	\$70.21	\$59.95	\$53.84

Source: Derived from *Platts* and *ICE* data.

Updated February 2, 2007

1065

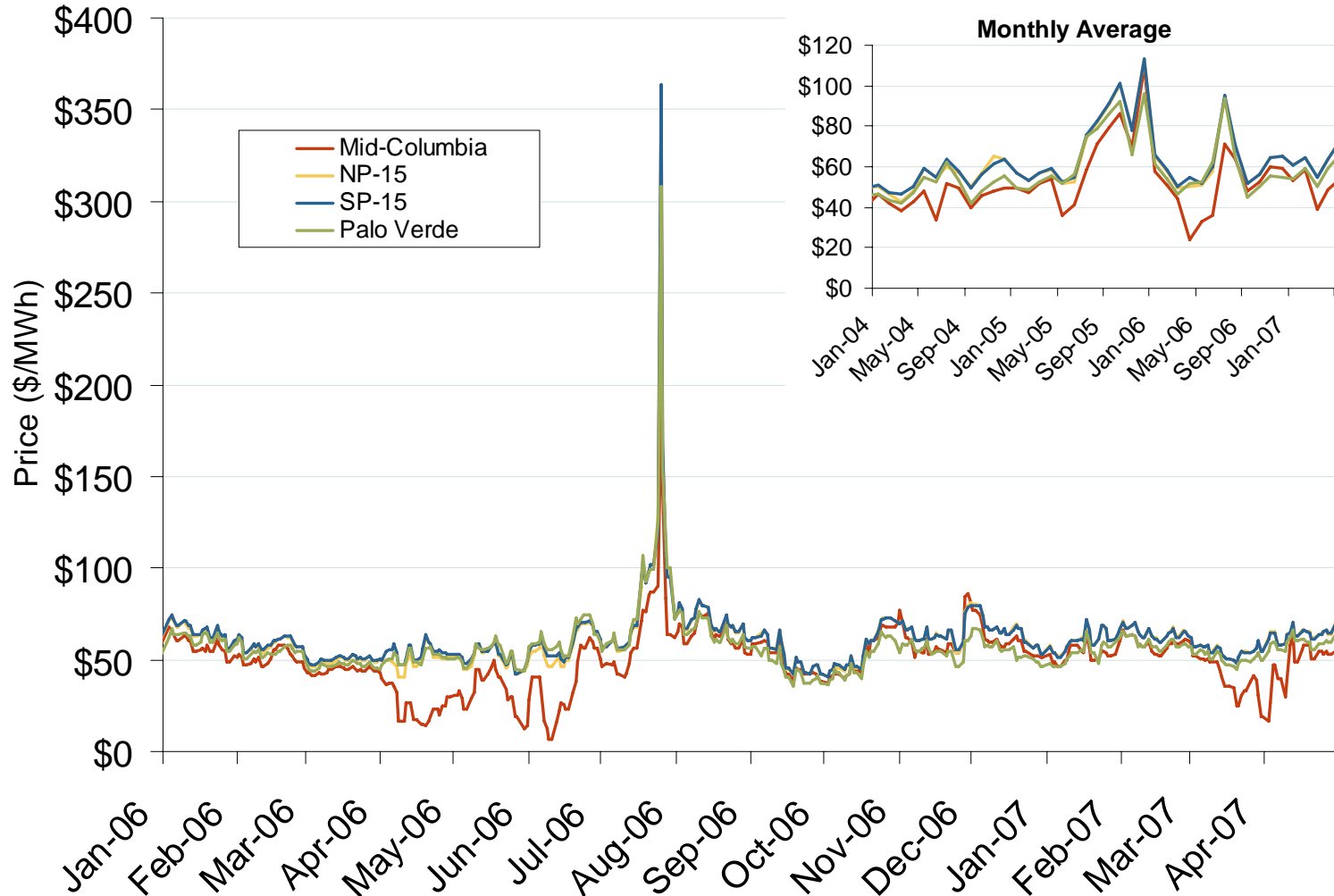
Southwestern Daily Bilateral Day-Ahead On-Peak Prices



Source: Derived from *Platts* data.

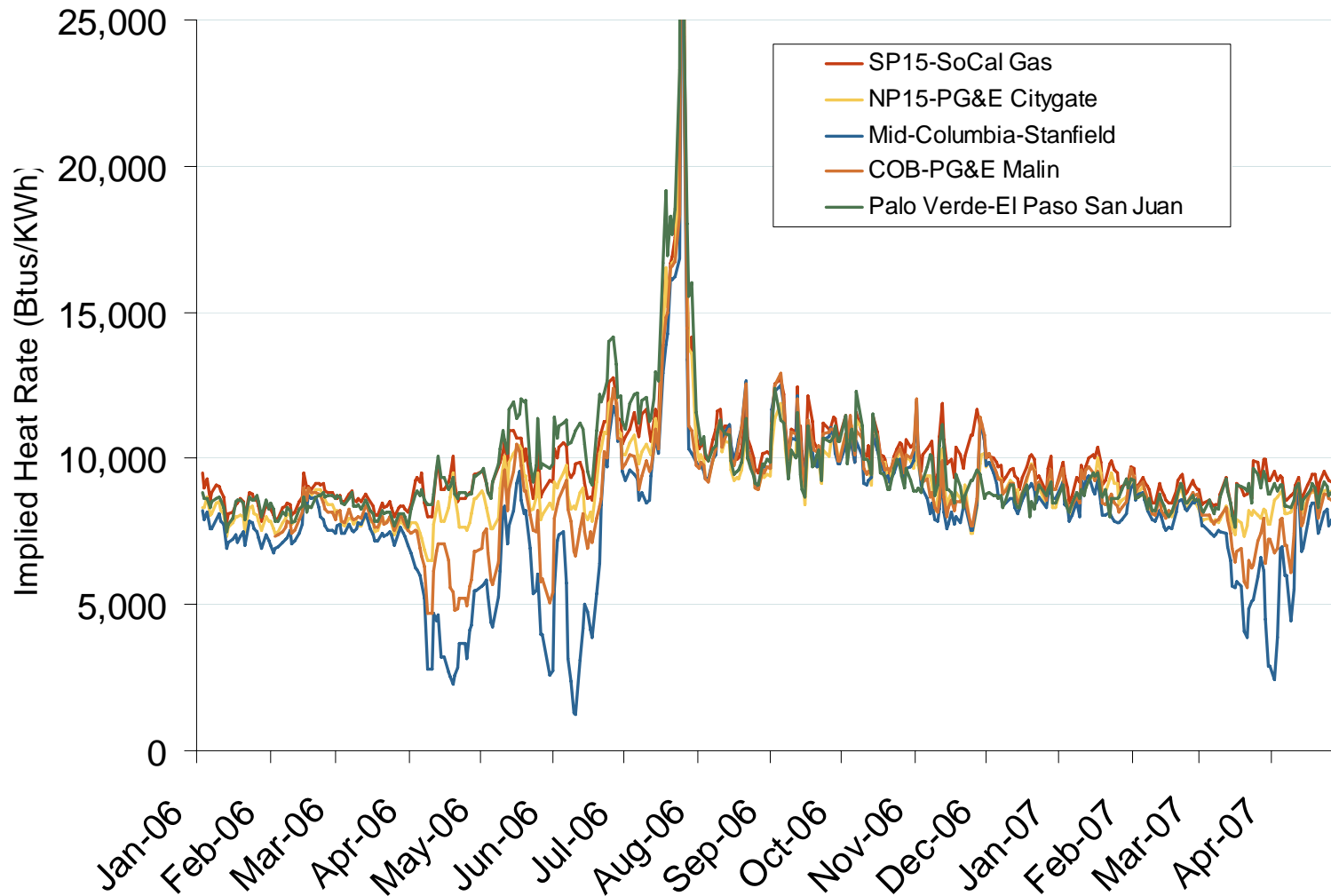
Corrected June 12, 2007

Western Daily Bilateral Day-Ahead On-Peak Prices



Source: Derived from Platts data.

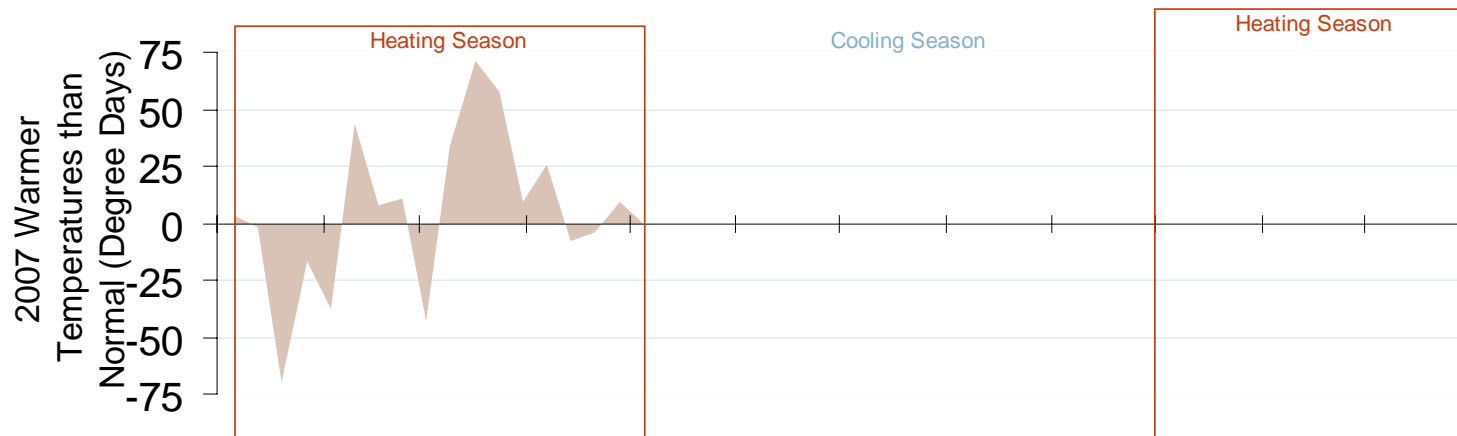
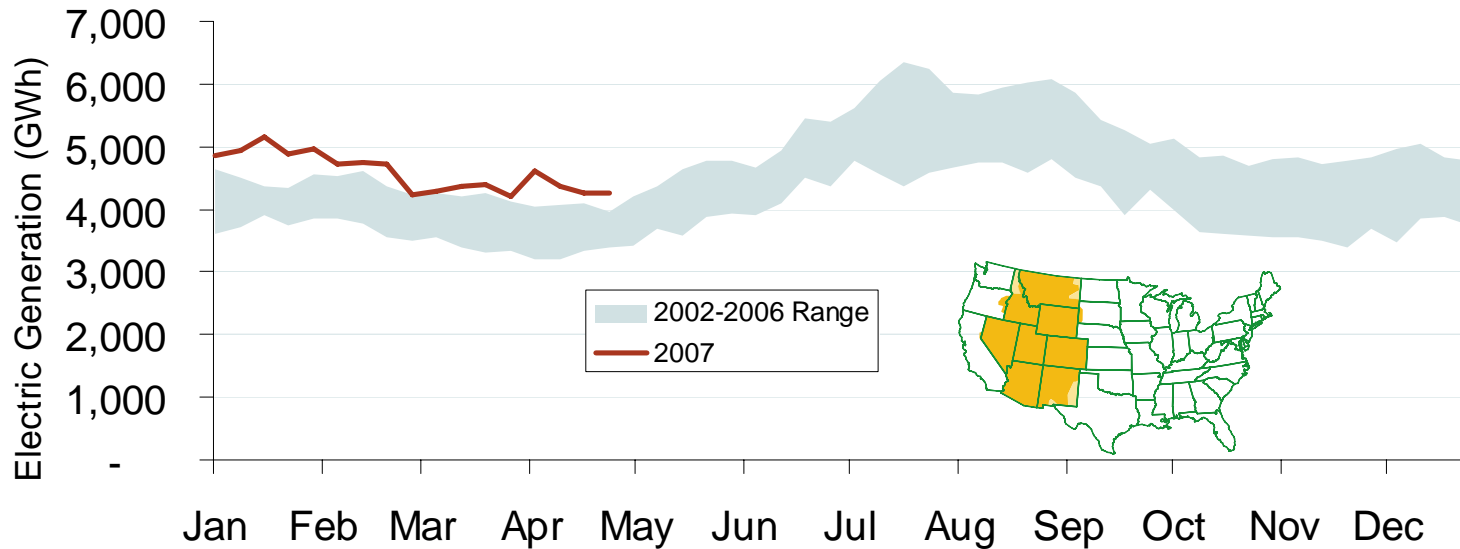
Implied Heatrates at Western Trading Points



Source: Derived from *Platts* data

Updated May 4, 2007

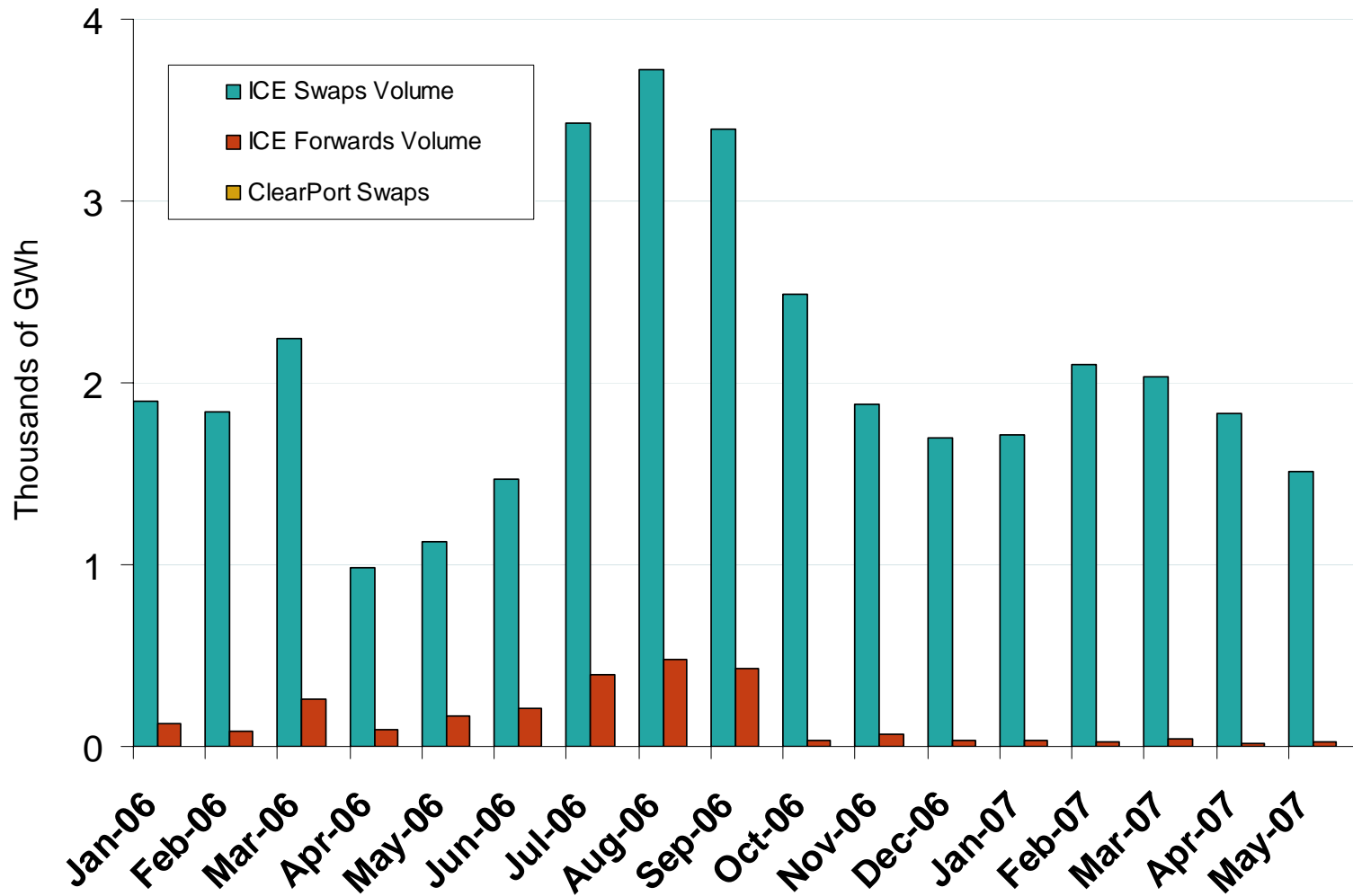
Weekly Electric Generation Output and Temperatures Rocky Mountains Region



Source: Derived from EEI and NOAA data.

Updated May 4, 2007

Palo Verde Forward and Swap Volumes



Source: Derived from ICE and Nymex ClearPort data. ICE on-peak forward and swap volumes are for Palo Verde and include monthly, dual monthly, quarterly, and calendar year contracts traded for each month. Nymex ClearPort on-peak swaps volumes are for Palo Verde and are traded by month.

Updated May 4, 2007