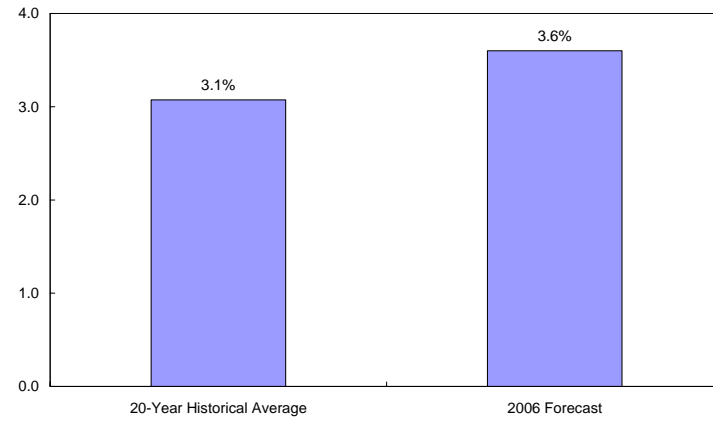


Administration's Updated Forecast Confirms Strong Economy

6/8/06

Real GDP Growth Forecasted To Be Faster Than Historical Average

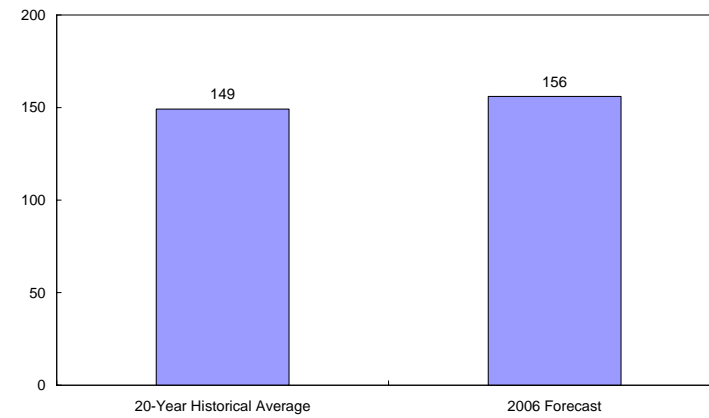
Q4-Q4 percent change in real GDP



Sources: Administration Forecast, Bureau of Economic Analysis.

Monthly Payroll Growth Forecasted To Be About The Historical Average

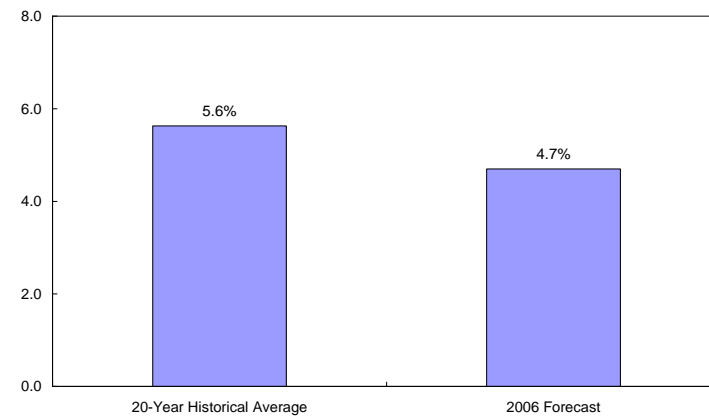
Thousands of payroll jobs per month



Sources: Administration Forecast, Bureau of Labor Statistics.

Unemployment Rate Forecasted To Be Lower Than Historical Average

Percent



Sources: Administration Forecast, Bureau of Labor Statistics.