

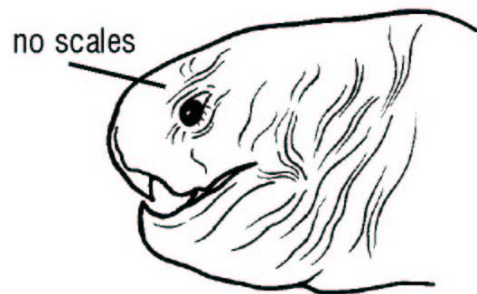
Species Identification



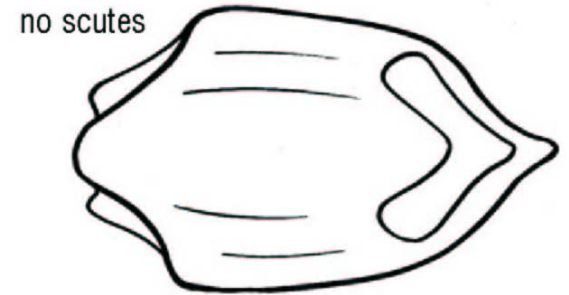
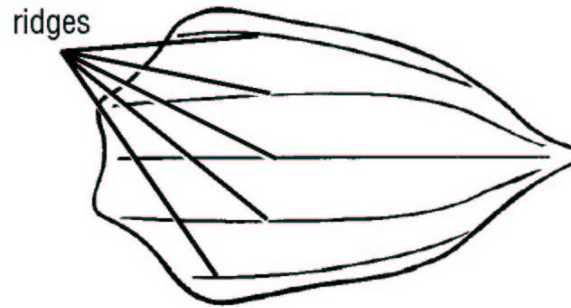
Leatherback sea turtle



Photo by K. James



Leatherback - *Dermochelys coriacea*



Reprinted with permission from Wyneken, J. 2001. The Anatomy of Sea Turtles. NOAA Tech. Memo NMFS-SEFSC-470.



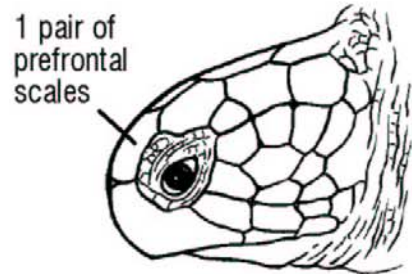
Photos by L. Belskis



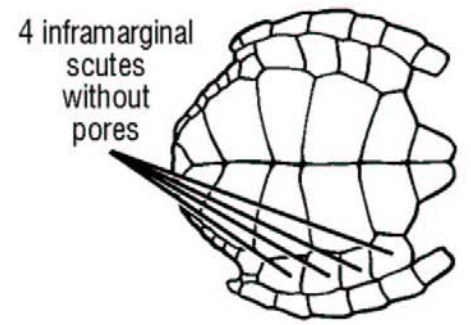
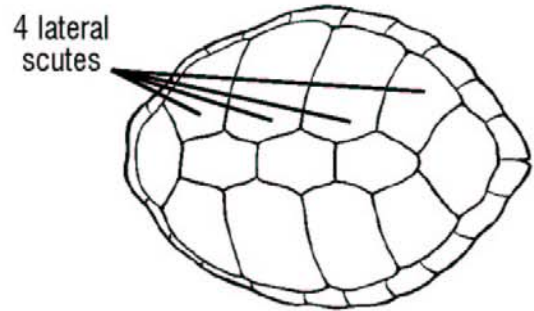
Green sea turtle



Photo by L. Avens



Green turtle - *Chelonia mydas*



Reprinted with permission from Wyneken, J. 2001. The Anatomy of Sea Turtles. NOAA Tech. Memo NMFS-SEFSC-470.



Photo by NMFS Miami



Photo by NMFS Miami



Photo by NMFS Beaufort



Photo by NMFS Beaufort

Hawksbill sea turtle

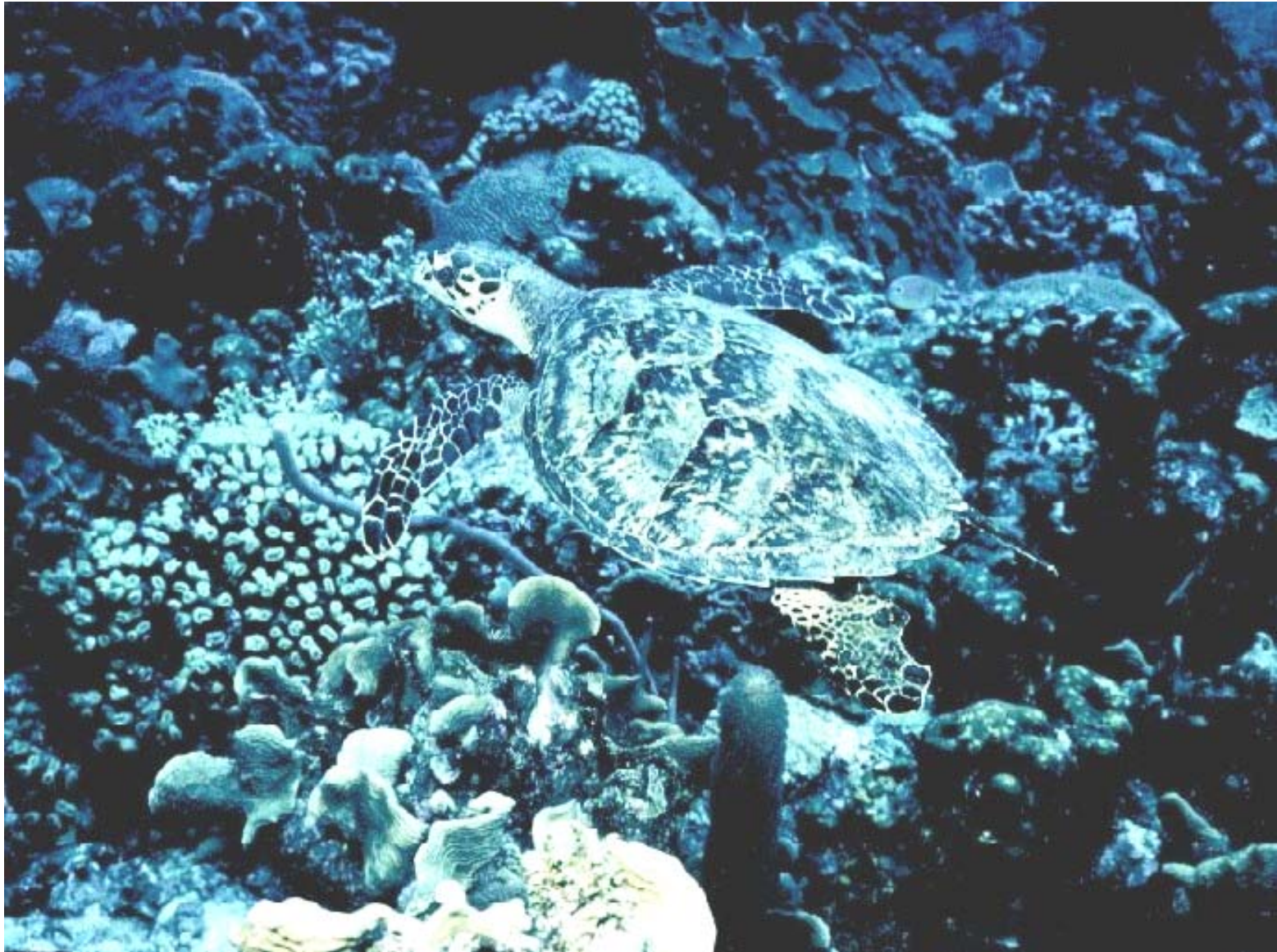
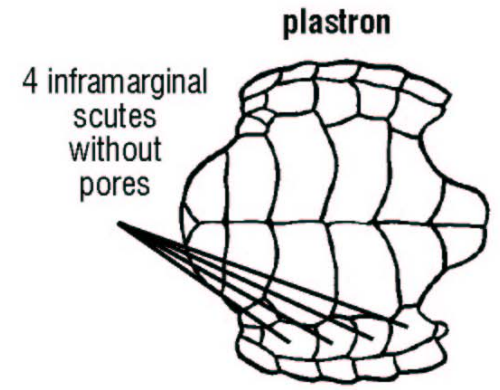
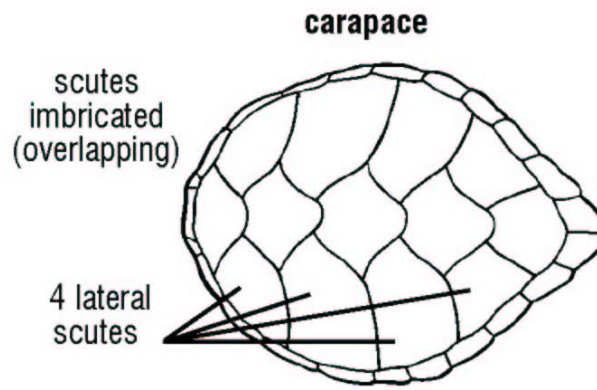
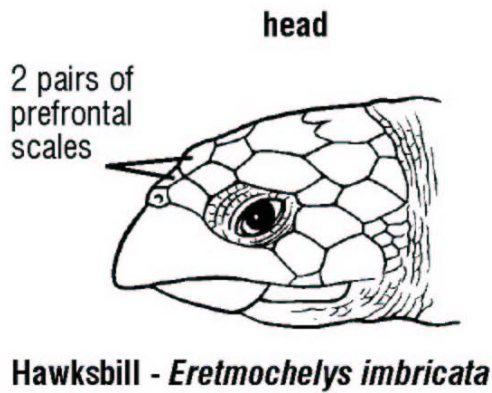


Photo by US Fish & Wildlife Service, America's Sea Turtles.



Reprinted with permission from Wyneken, J. 2001. The Anatomy of Sea Turtles. NOAA Tech. Memo NMFS-SEFSC-470.



Photo by W. Teas



Photo by NMFS Miami

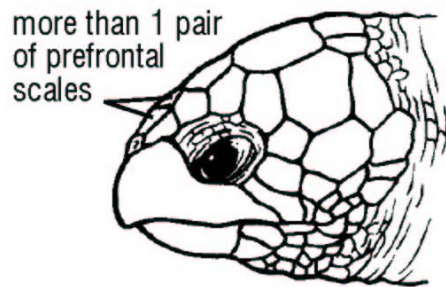


Photo by W. Teas

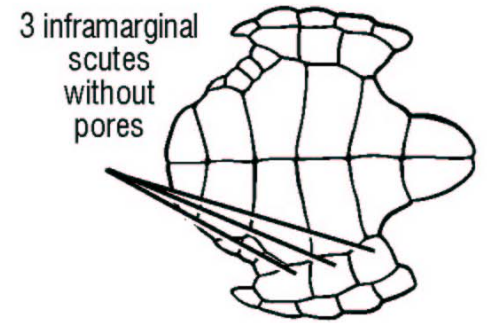
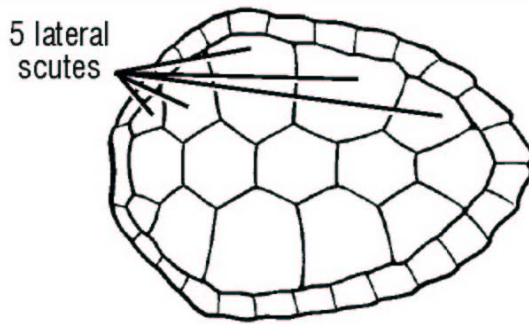
Loggerhead sea turtle



Photo by L. Avens



Loggerhead - *Caretta caretta*



Reprinted with permission from Wyneken, J. 2001. The Anatomy of Sea Turtles. NOAA Tech. Memo NMFS-SEFSC-470.



Photo by W. Teas



Photo by L. Avens



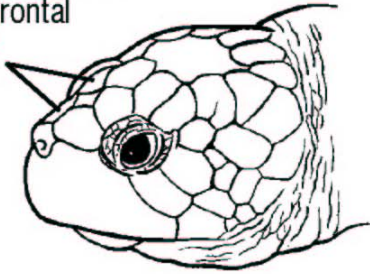
Photo by L. Avens

Kemp's ridley sea turtle



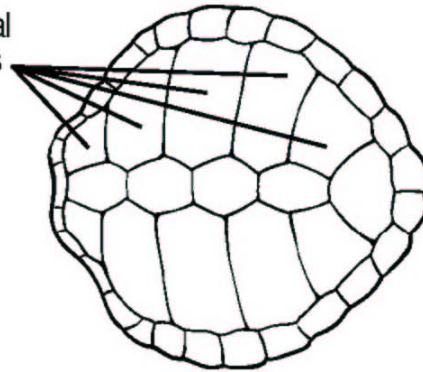
Photo by W. Witzell

more than 1 pair
of prefrontal
scales

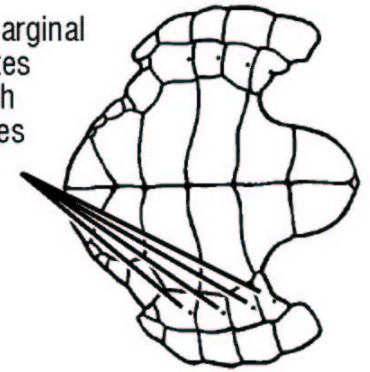


Kemp's ridley - *Lepidochelys kempii*

5 lateral
scutes



4 inframarginal
scutes
with
pores



Reprinted with permission from Wyneken, J. 2001. The Anatomy of Sea Turtles. NOAA Tech. Memo NMFS-SEFSC-470.



Photo by W. Teas



Photo by W. Teas

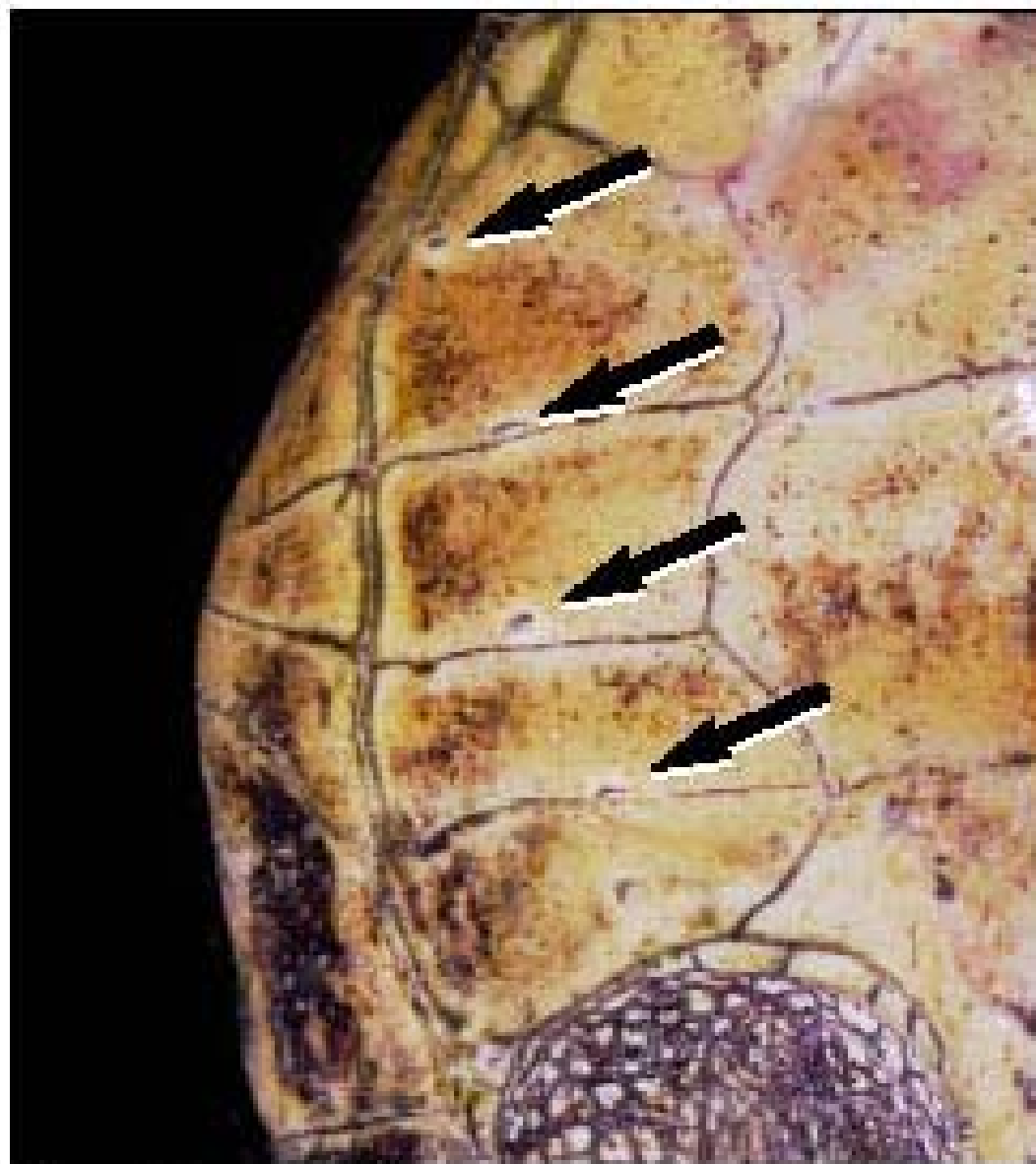


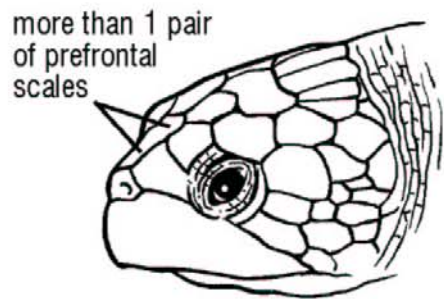
Fig. 22. *Lepidochelys* *inframarginals* with *Rathke's pores*.

Reprinted with permission from Wyneken, J. 2001. The Anatomy of Sea Turtles. NOAA Tech. Memo NMFS-SEFSC-470.

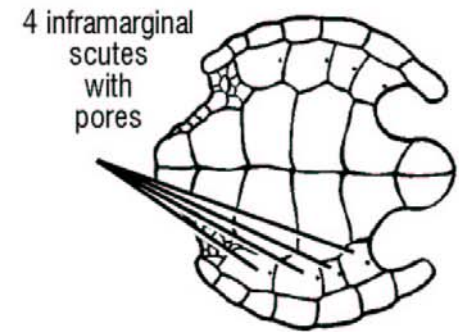
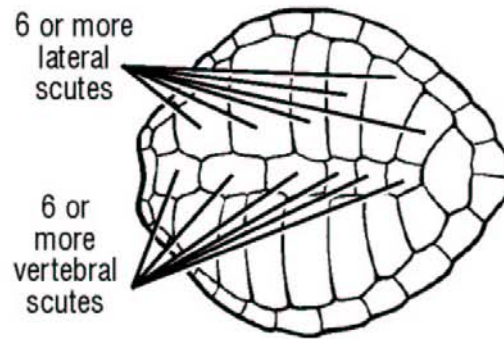
Olive ridley sea turtle



Photo by W. Teas



Olive ridley - *Lepidochelys olivacea*



Reprinted with permission from Wyneken, J. 2001. The Anatomy of Sea Turtles. NOAA Tech. Memo NMFS-SEFSC-470.

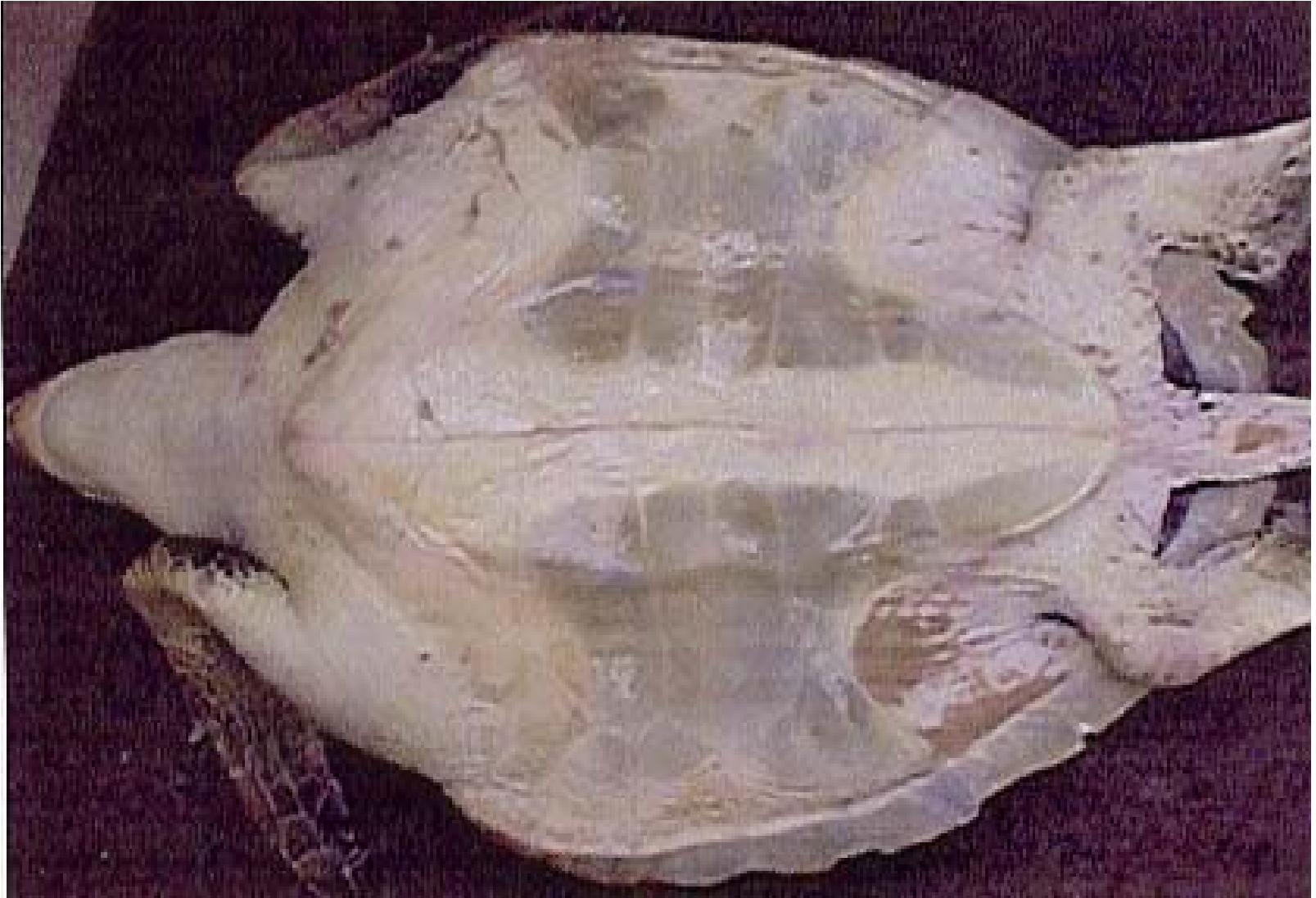


Photo by the Turtle Hospital

Most common hardshell turtles



Photo by L. Avens

Turtle Photographs

Species Identification

Leatherback

For leatherbacks one picture should show the top of the head.

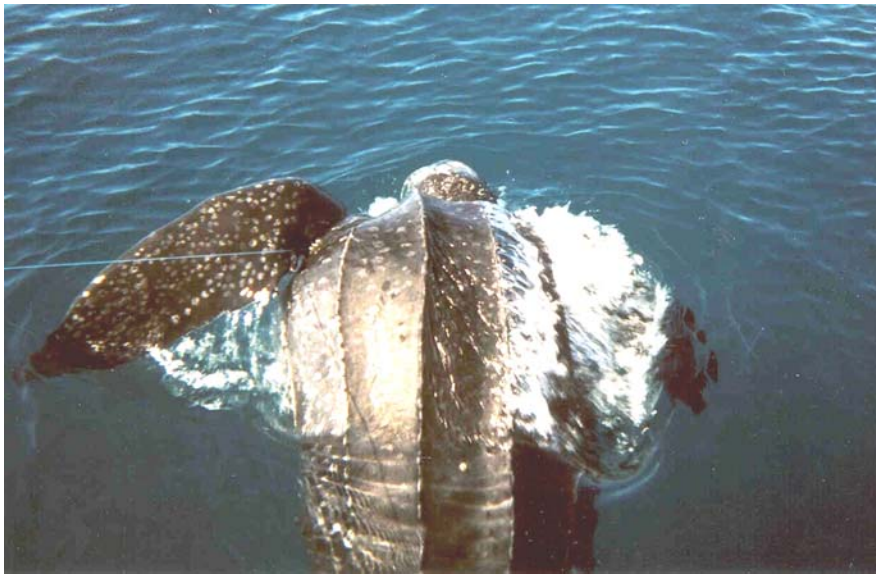


Photo by NMFS Miami



Photo by L. Belskis

Species Identification

Hardshell turtles

We require a minimum of 3 pictures per turtle:

1. picture of dorsal surface
2. picture of ventral surface
3. picture of front of the head

Species Identification

Hardshell turtles

dorsal



ventral



Photos by NMFS Miami

Species Identification

Hardshell turtles

head shot



Photo by NMFS Miami

Photograph of Gear Interaction

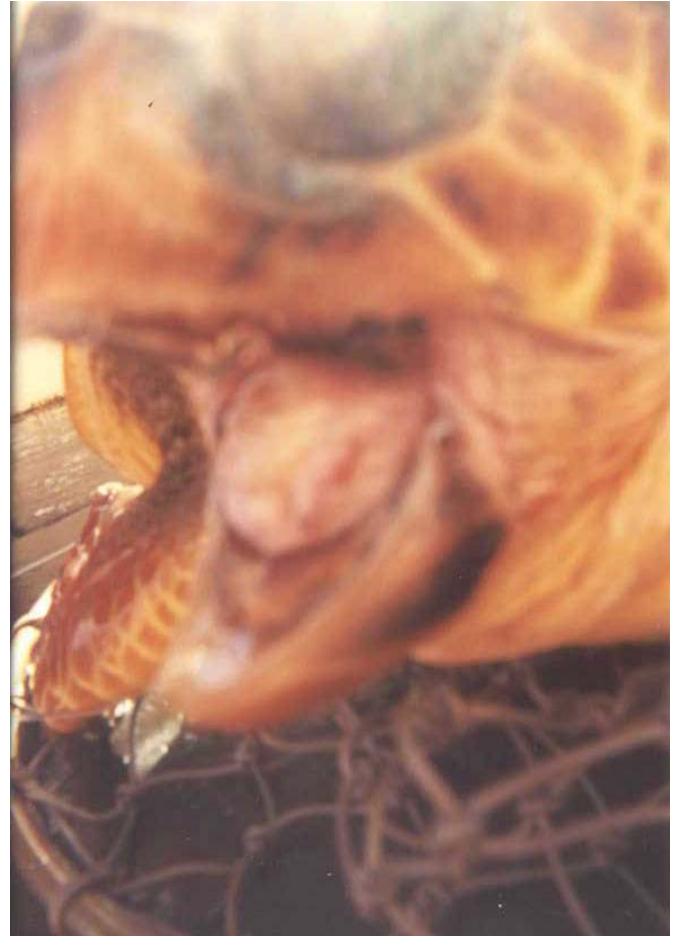
- At least one picture should show the gear interaction before the hooks are removed.



Photos by NMFS Miami

Focal distance

- The disposable cameras have a focal distance of at least four feet.



Miscellaneous Pictures



Left hind flipper missing



PAT tag attachment

Photos by NMFS Miami

Picture Labeling



Photo by NMFS Miami

Use the dive board or the paint sticks to label the animals.

Write the Date, Trip and Specimen #.

Safety



Photo by W. Witzell



Photo by W. Teas



Turtle bite

Photo by NMFS Beaufort

Hind flipper claws



Photo by NMFS Miami

Front flipper claws

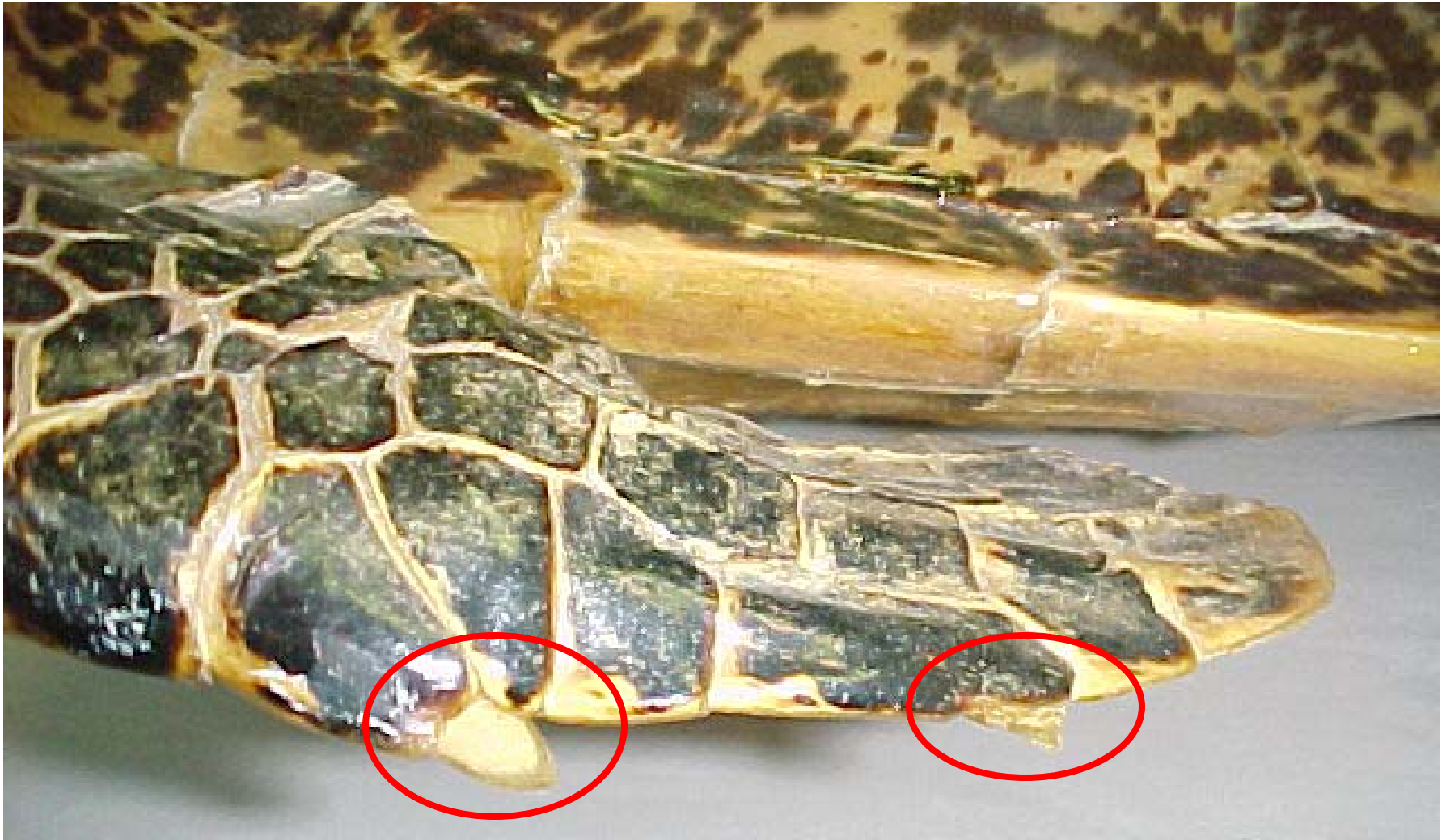


Photo by NMFS Miami

Barnacles



Photo by NMFS Beaufort

How to protect yourself



Photo by NMFS Miami