

## COMMUNITY INVOLVEMENT

A crucial part of the RACER process is the involvement of community members. The New Mexico Community Foundation has the responsibility for broadening and enhancing public involvement in the RACER process. This role is valuable to decision-makers because currently there is no independent process that decision-makers can use to identify the public's concerns as decisions about reducing health risks and ecological impacts from Los Alamos National Laboratory (LANL) are made.

The New Mexico Community Foundation has sponsored public meetings, focus groups and testing sessions to seek input from stakeholders about RACER. In particular, the Foundation has actively sought out groups that are often not heard with regard to operations at LANL. Time, money and cultural beliefs are common barriers to community members being able to express opinions about issues they face. Input from this interaction has shaped RACER. Regardless of personal points of view, almost everyone believes that making environmental data readily accessible to everyone in a way that promotes an understanding of the data is essential for building trust and credibility between LANL and the communities surrounding it.

There is a strong consensus among people that RACER is a huge step in building and maintaining this trust into the future and a way to gather ideas on the type of information the community believes should be factored into making decisions about reducing health risks and ecological impacts. Some of the factors discussed have been cultural and spiritual values, land use, protection of natural habitat and environment and the long-term safety of New Mexico's diverse cultures.



NEW MEXICO COMMUNITY FOUNDATION

*Growing Our Future, Together®*



R A C E R

A process and tools that enable the community to identify concerns and provide input to guide decisions about the most effective ways to reduce health risks and ecological impacts resulting from operations and waste management activities at Los Alamos National Laboratory (LANL).

[www.racernm.com](http://www.racernm.com)

For more information or questions, contact:

New Mexico Community Foundation

343 East Alameda

Santa Fe, New Mexico 87501

Tel: 505-820-6860 [racernm@nmcf.org](mailto:racernm@nmcf.org)

Risk Analysis

Communication

Evaluation

Reduction

## A TOOL FOR NEW MEXICO COMMUNITIES

The RACER project was implemented in 2003, to provide a process to enhance Los Alamos National Laboratory's (LANL) ability to effectively manage and reduce health risks and ecological impacts.

RACER stands for Risk Analysis, Communication, Evaluation, and Reduction. Implementation of the RACER process, has required working closely with members of the community, New Mexico Pueblos, New Mexico Environment Department (NMED) and LANL to create a process that could provide information to regulators, LANL and the community about the chemicals and radioactive materials in the environment at and around LANL.

Implementation of the RACER process by Colorado State University and its subcontractor, Risk Assessment Corporation (RAC), included the development of a state-of-the-art Data Analysis Tool to organize, manage and evaluate environmental monitoring data collected by LANL and NMED. The project is groundbreaking in its comprehensiveness, transparency, and availability of environmental data related to a Department of Energy facility.

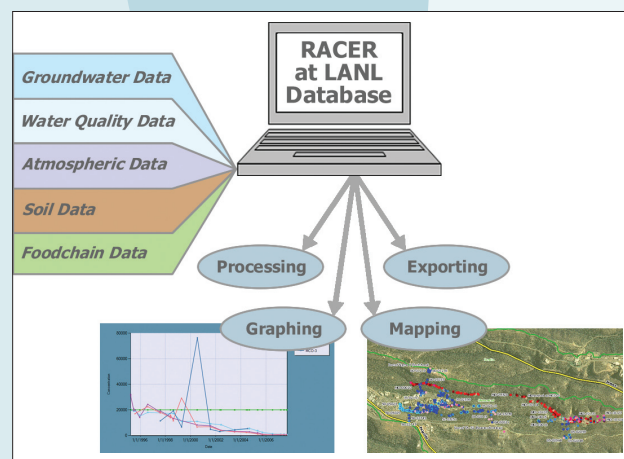
The Data Analysis Tool is the first step in this process and is located on the web and can be accessed by anyone who is interested in the data. It includes approximately six million historical and recent records and is updated weekly. Both LANL and NMED are committed to provide the data from their samples on a regular consistent basis.

## Some of the Data Analysis Tool capabilities are:

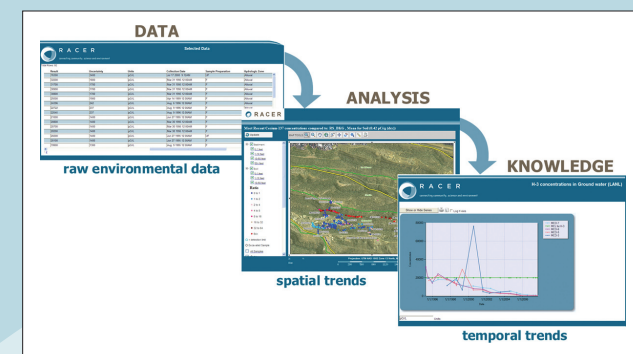
- Data Extraction - select specific data such as
  - collected by a particular organization (e.g. LANL, NMED),
  - media types (e.g. soil, groundwater, sediment),
  - analytes (e.g. chromium, arsenic, tritium)
- Temporal & Spatial Analyses - how the concentration of an analyte changes over time and how the concentration varies by location
- Compare the measured concentrations to reference values (such as LANL background values, state and federal standards)
- Compare samples collected at the same location by two different groups (e.g. LANL vs. regulators)
- Screening - identify samples that exceed specific values
- Mapping - see where samples have been taken, and where a specific analyte has been detected

Use the following link to see for yourself:

[www.racernm.com](http://www.racernm.com)

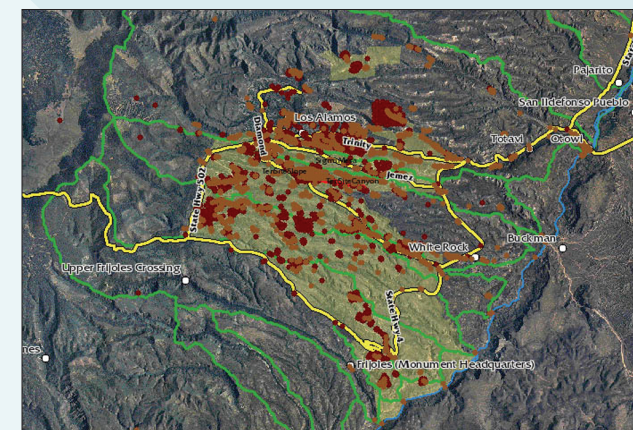


Overview of the data analysis process.



The Data Analysis Tool is designed to allow users to select, evaluate, and analyze data collected in and around LANL.

The RACER Data Analysis Tool can show you where Los Alamos National Laboratory and the New Mexico Environment Department are collecting samples and the environmental media such as air, soil, sediment, vegetation, storm water, ground water where the samples are collected from.



Map of sample locations and relative concentrations of an analyte.