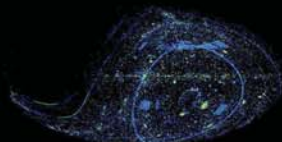
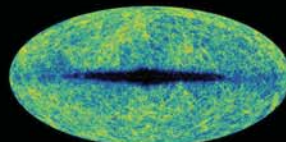


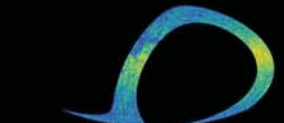
The CFHT Observation Log (546471 rows)



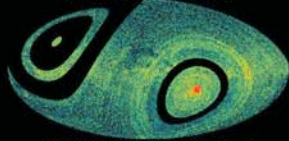
ESO Science Archive Catalog (562713 rows)



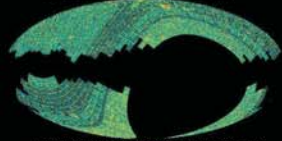
2MASS All-Sky Extended Source Catalog (1647599 rows)



Southern Durchmusterung catalog (134834 rows)



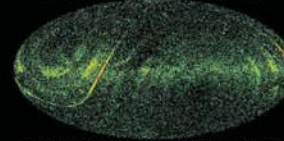
Yale Zone Catalogs Integrated (221338 rows)



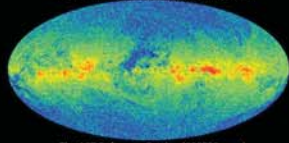
Lick Northern Proper Motion Program (148940 rows)



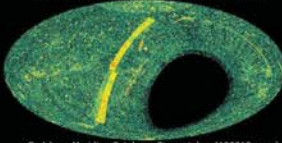
Catalog of 2700 double stars (2714 rows)



The Washington Visual Double Star Catalog, 1996.0 (78100 rows)



The ACT Reference Catalog (988758 rows)



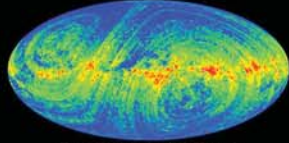
Carlsberg Meridian Catalogs: Star catalog (180812 rows)



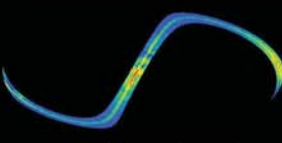
Carlsberg Meridian Catalogs: Ref. stars within 20' of Quasars (15129 rows)



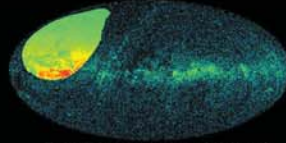
Extragalactic Reference Link Catalog (89422 rows)



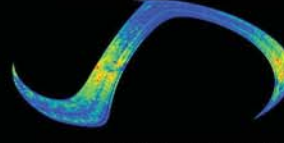
The AC 2000.2 Catalog (4621751 rows)



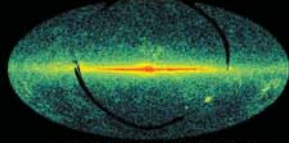
XZ Catalog of Zodiacal Stars (244437 rows)



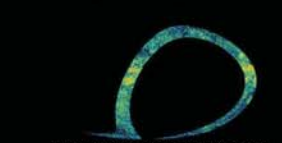
The UCAC2 Bright Star Supplement (430000 rows)



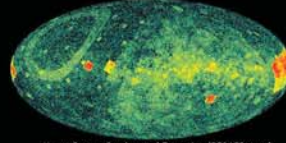
Astrographic Catalog +01 to +31 Degrees (997311 rows)



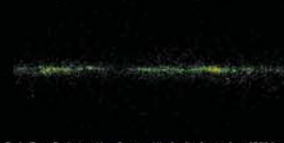
IRAS catalog of Point Sources (245889 rows)



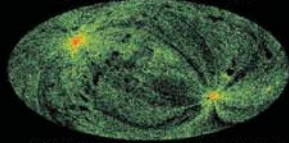
Michigan Catalog of HD stars, Vol.4 (33301 rows)



Henry Draper Catalog and Extension (272150 rows)



Early-Type Emission-Line Stars - Wackerling's catalog (5326 rows)



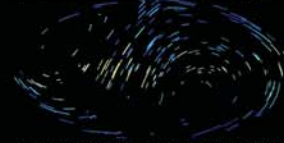
ROSAT All-Sky Survey Faint Source Catalog (105924 rows)



Catalog of High Angular Resolution Measurements (3248 rows)



Hamburg/IRASS Cat. of optical ident. - Optical data (13829 rows)



Extension of ICRF to V=16 - meridian catalog (546459 rows)



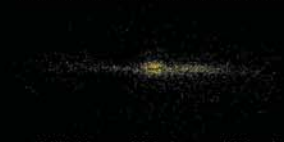
Lyon Groups of Galaxies - nearby galaxies (3933 rows)



SANTIAGO 91, RA catalog (3387 rows)



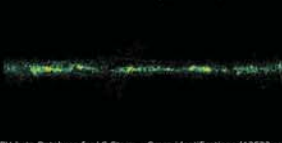
High velocity HI Southern Survey detections (6848 rows)



1612MHz OH survey of IRAS point sources (2703 rows)



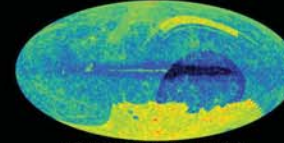
Northern Optical Cluster Survey, II (8155 rows)



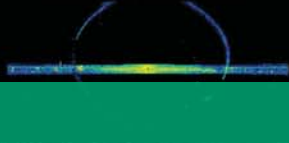
UBV-beta Database for LS Stars - Cross-identifications (12522 rows)



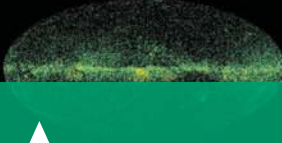
FIRST-APM Source Catalog (496791 rows)



NED Sources [9/25/05] (7738914 rows)



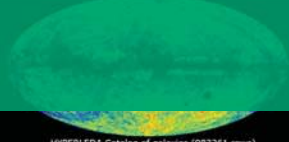
SDSS Extended Data Release Catalogs and Legacy Surveys (100000000 rows)



SDSS Main Sequence Stars (220000000 rows)



SDSS Red Sequence Galaxies (100000000 rows)



HYPERLEDA Catalog of galaxies (983261 rows)



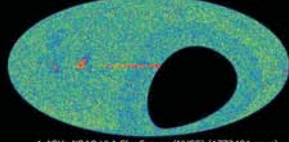
IRAS Asteroid Sighting Record (6510 rows)



Berkeley Low-Latitude H I Survey (38961 rows)



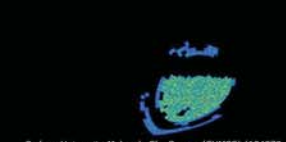
The Second Bologna Survey (9929 rows)



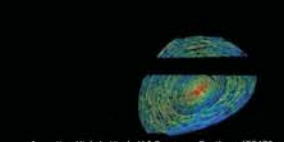
1.4GHz NRAO VLA Sky Survey (NVSS) (1773484 rows)



The WISH catalog at 352 MHz (90357 rows)



Sydney University Molonglo Sky Survey (SUMSS) (134870 rows)



Argentina High-Latitude H I Survey - Southern (55470 rows)

# APPENDICES

The National Virtual Observatory's Sky Statistics Survey allows astronomers to get a fast inventory of all astronomical objects from various catalogs. The U.S.-based Virtual Observatory project is collaborating with the International Virtual Observatory Alliance to make it possible for researchers to access astronomical data from ground- and space-based telescopes worldwide. The U.S.-based virtual observatory project is supported by NSF. Credit: National Virtual Observatory and California Institute of Technology (<http://us-vo.org/>)