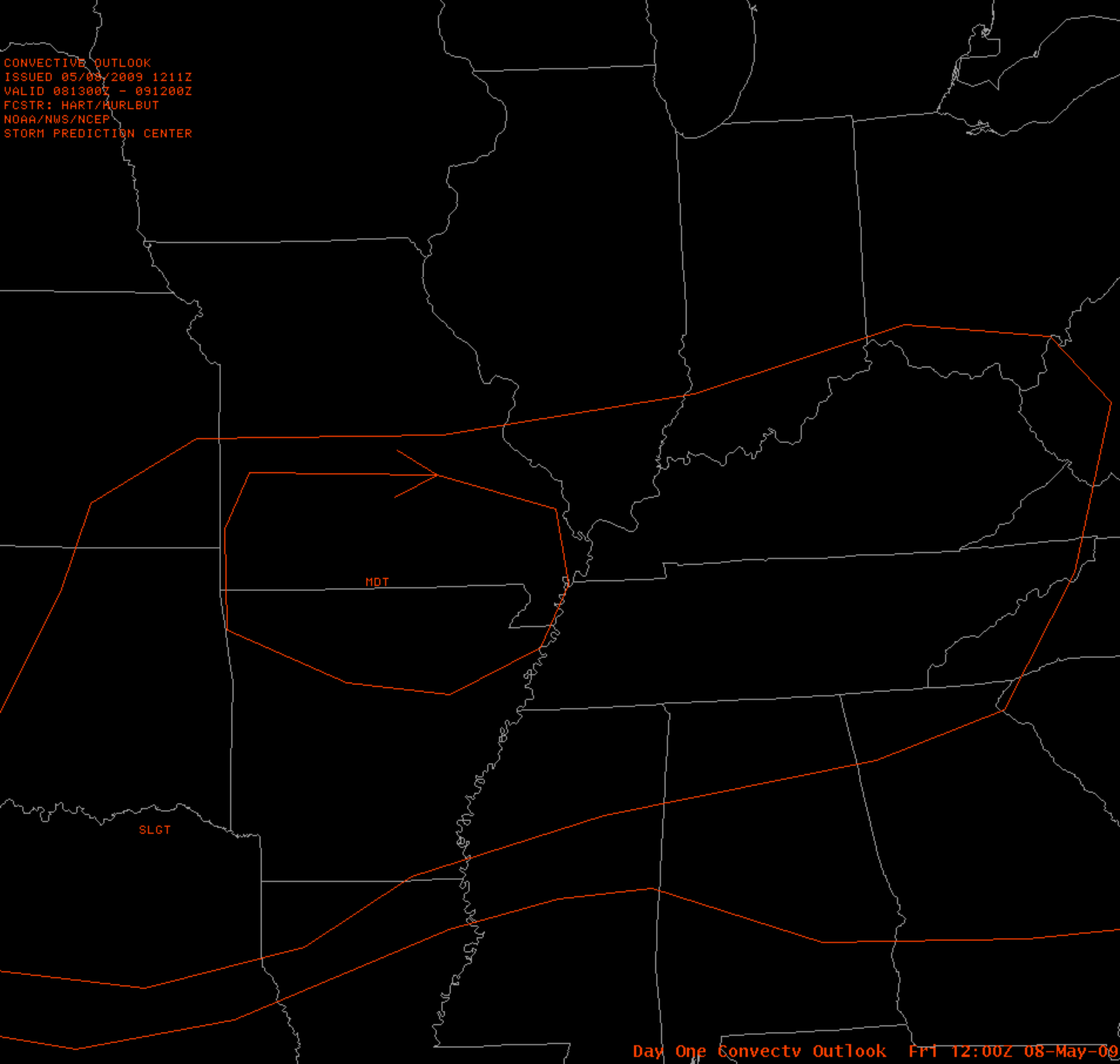


CONVECTIVE OUTLOOK
ISSUED 05/08/2009 1211Z
VALID 081300Z - 091200Z
FCSTR: HART/HURLBUT
NOAA/NWS/NCEP
STORM PREDICTION CENTER



MDT

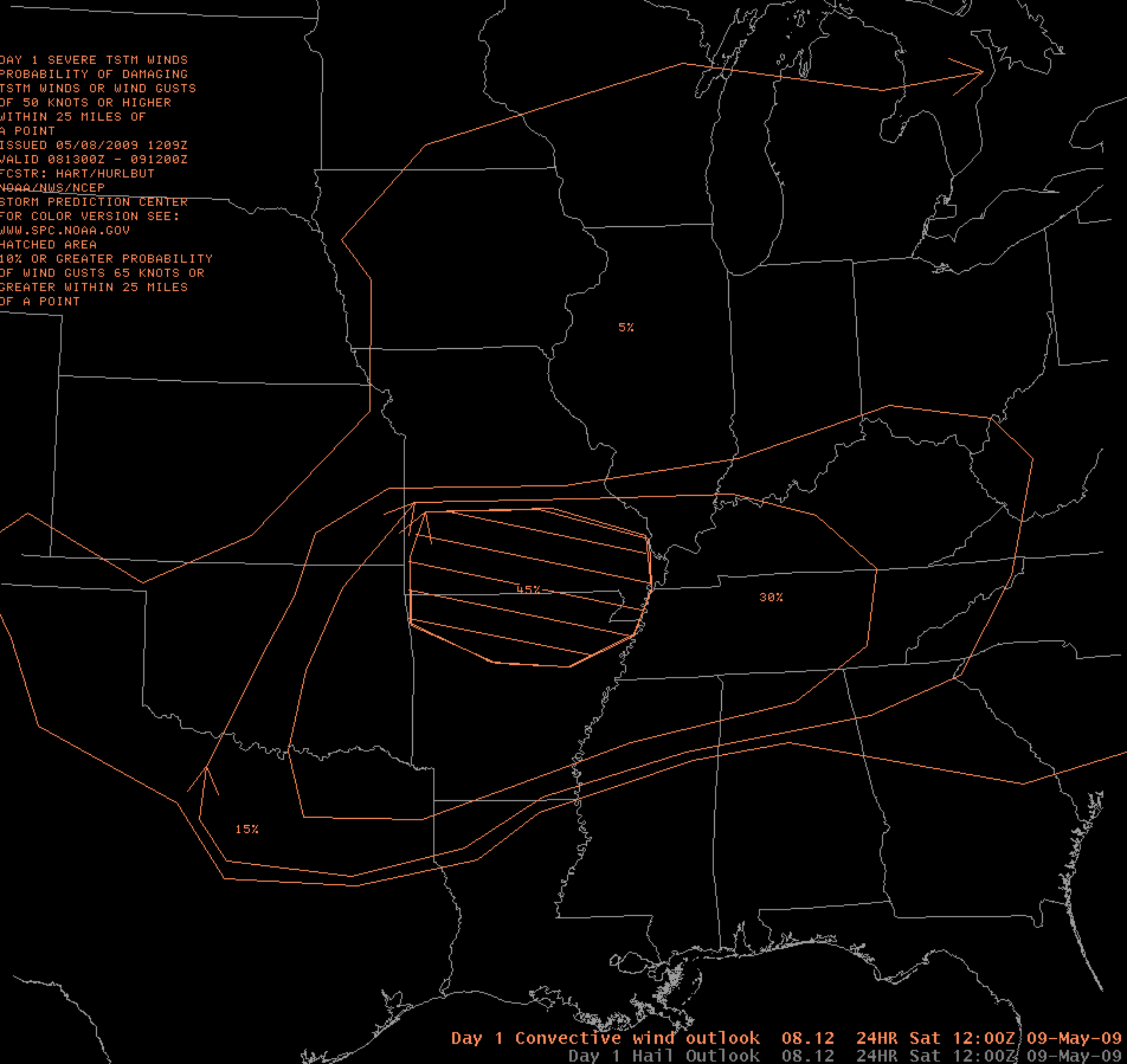
SLGT

DAY 1 SEVERE TSTM WINDS
PROBABILITY OF DAMAGING
TSTM WINDS OR WIND GUSTS
OF 50 KNOTS OR HIGHER
WITHIN 25 MILES OF
A POINT

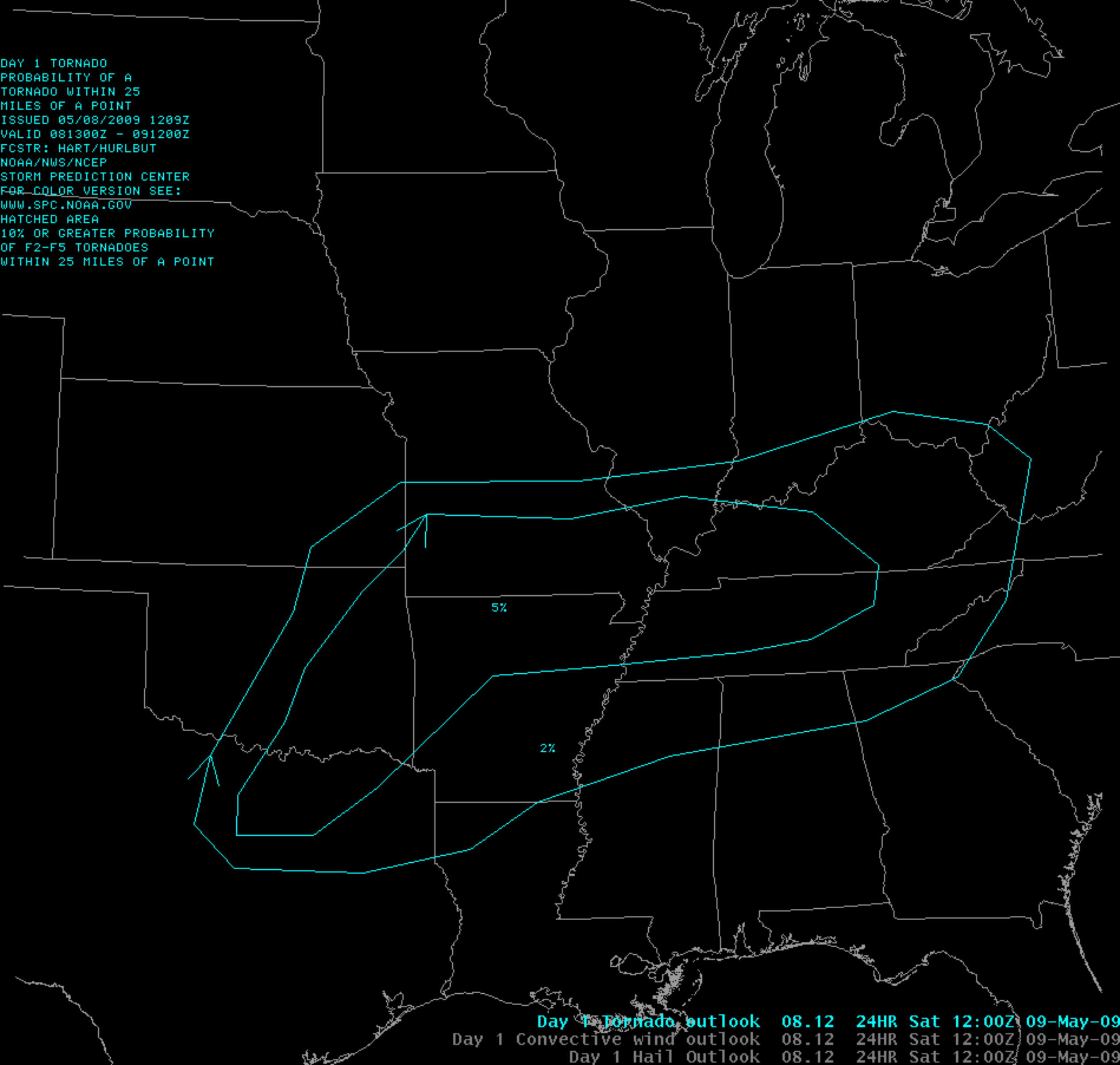
ISSUED 05/08/2009 1209Z
VALID 081300Z - 091200Z
FCSTR: HART/HURLBUT
NOAA/NWS/NCEP

STORM PREDICTION CENTER
FOR COLOR VERSION SEE:
WWW.SPC.NOAA.GOV

HATCHED AREA
10% OR GREATER PROBABILITY
OF WIND GUSTS 65 KNOTS OR
GREATER WITHIN 25 MILES
OF A POINT



DAY 1 TORNADO
PROBABILITY OF A
TORNADO WITHIN 25
MILES OF A POINT
ISSUED 05/08/2009 1209Z
VALID 081300Z - 091200Z
FCSTR: HART/HURLBUT
NOAA/NWS/NCEP
STORM PREDICTION CENTER
FOR COLOR VERSION SEE:
WWW.SPC.NOAA.GOV
HATCHED AREA
10% OR GREATER PROBABILITY
OF F2-F5 TORNADOES
WITHIN 25 MILES OF A POINT

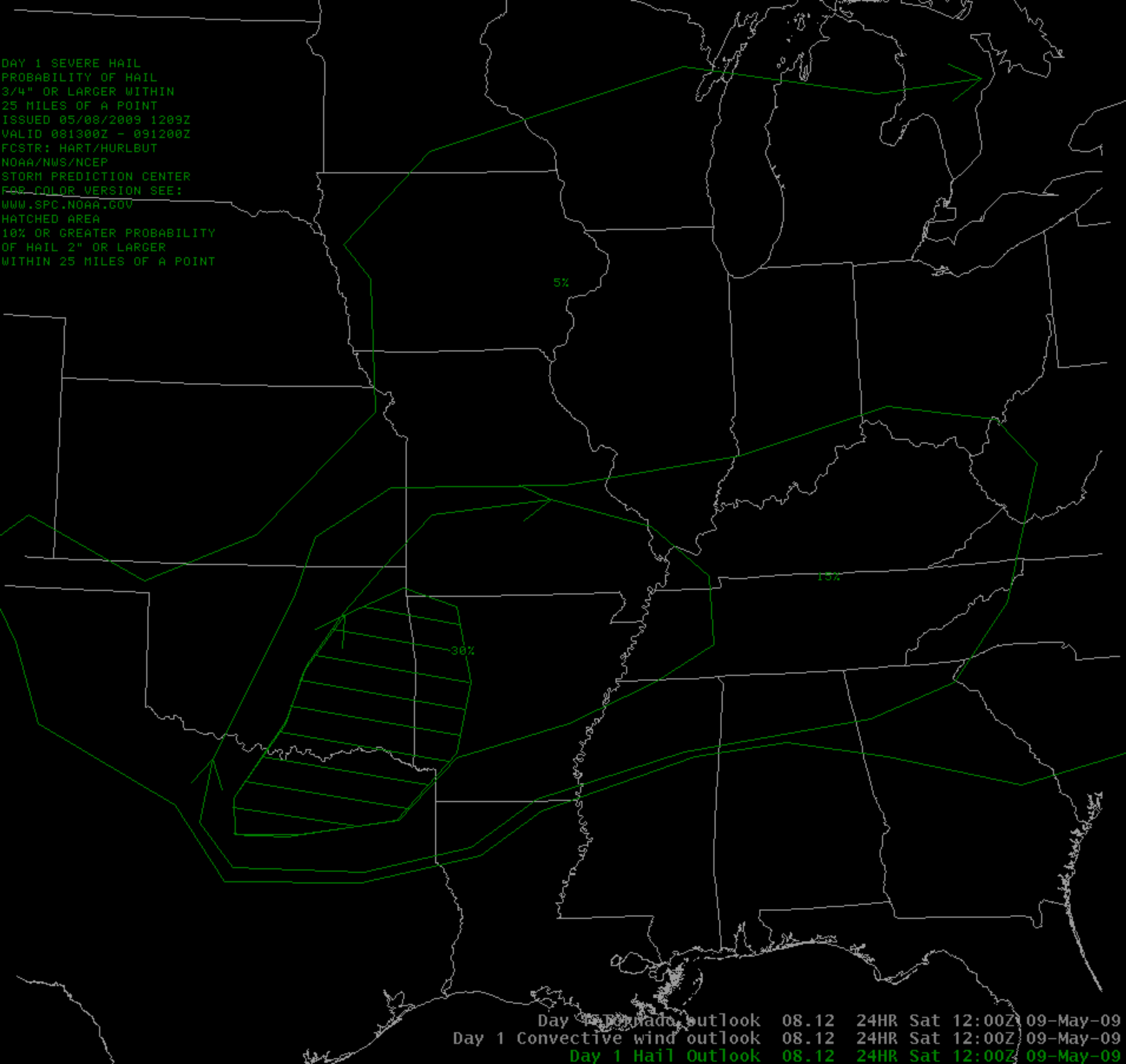


Day 1 Tornado outlook 08.12 24HR Sat 12:00Z 09-May-09

Day 1 Convective wind outlook 08.12 24HR Sat 12:00Z 09-May-09

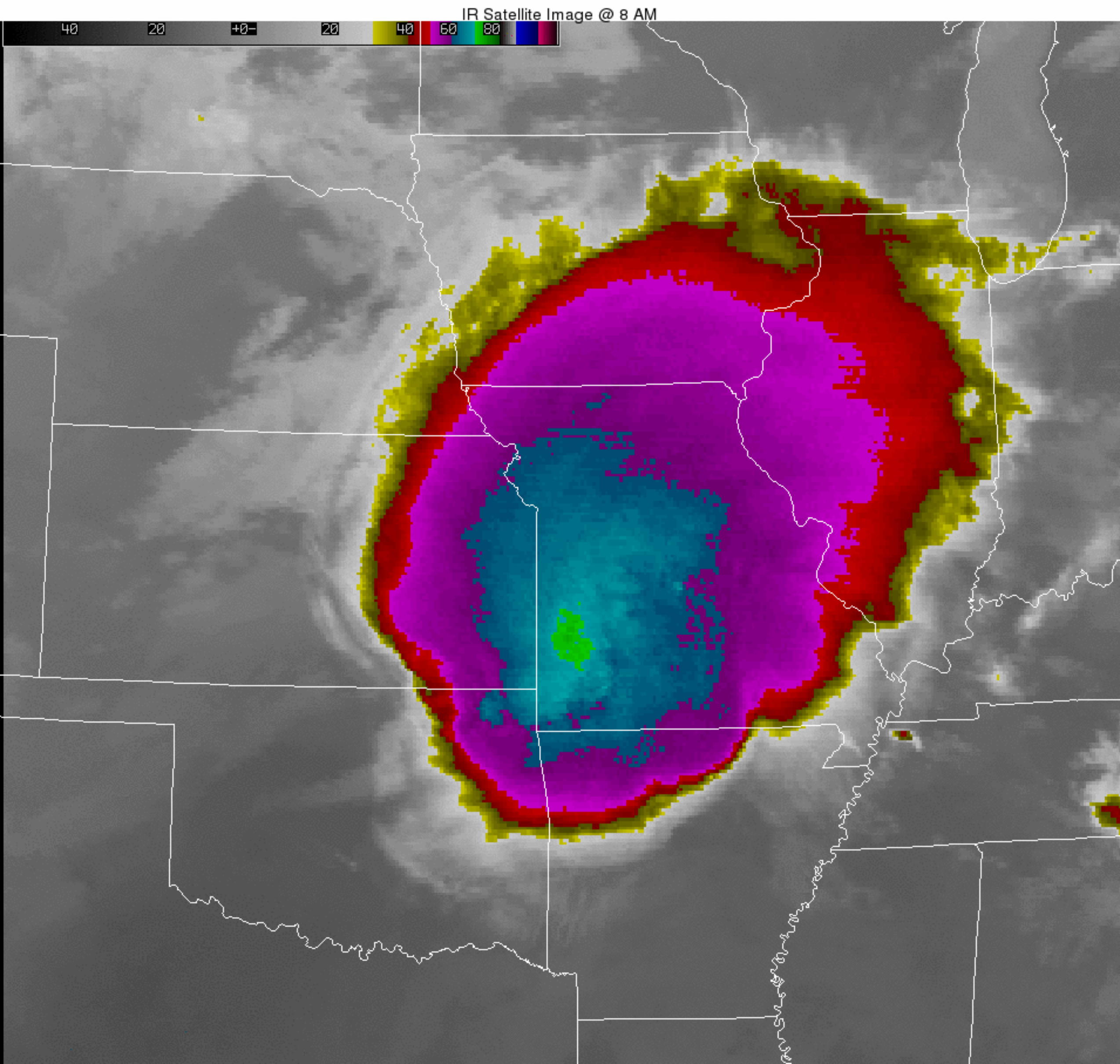
Day 1 Hail Outlook 08.12 24HR Sat 12:00Z 09-May-09

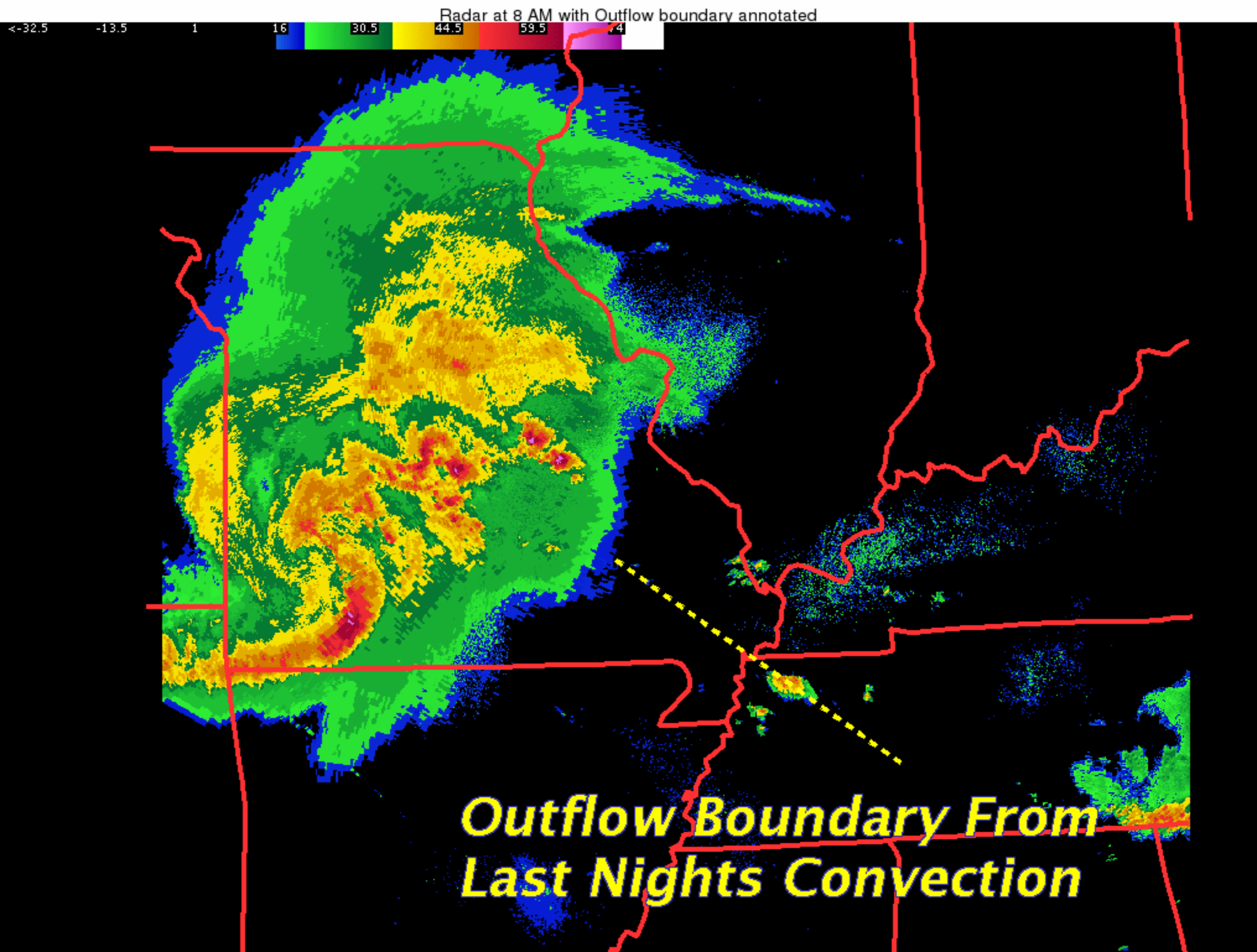
DAY 1 SEVERE HAIL
PROBABILITY OF HAIL
3/4" OR LARGER WITHIN
25 MILES OF A POINT
ISSUED 05/08/2009 1209Z
VALID 081300Z - 091200Z
FCSTR: HART/HURLBUT
NOAA/NWS/NCEP
STORM PREDICTION CENTER
FOR COLOR VERSION SEE:
WWW.SPC.NOAA.GOV
HATCHED AREA
10% OR GREATER PROBABILITY
OF HAIL 2" OR LARGER
WITHIN 25 MILES OF A POINT



Day 1 Tornado outlook 08.12 24HR Sat 12:00Z 09-May-09
Day 1 Convective wind outlook 08.12 24HR Sat 12:00Z 09-May-09
Day 1 Hail Outlook 08.12 24HR Sat 12:00Z 09-May-09

IR Satellite Image @ 8 AM





APPROX. TIME OF LINE PASSAGE

10 AM

1230 PM

3 PM

